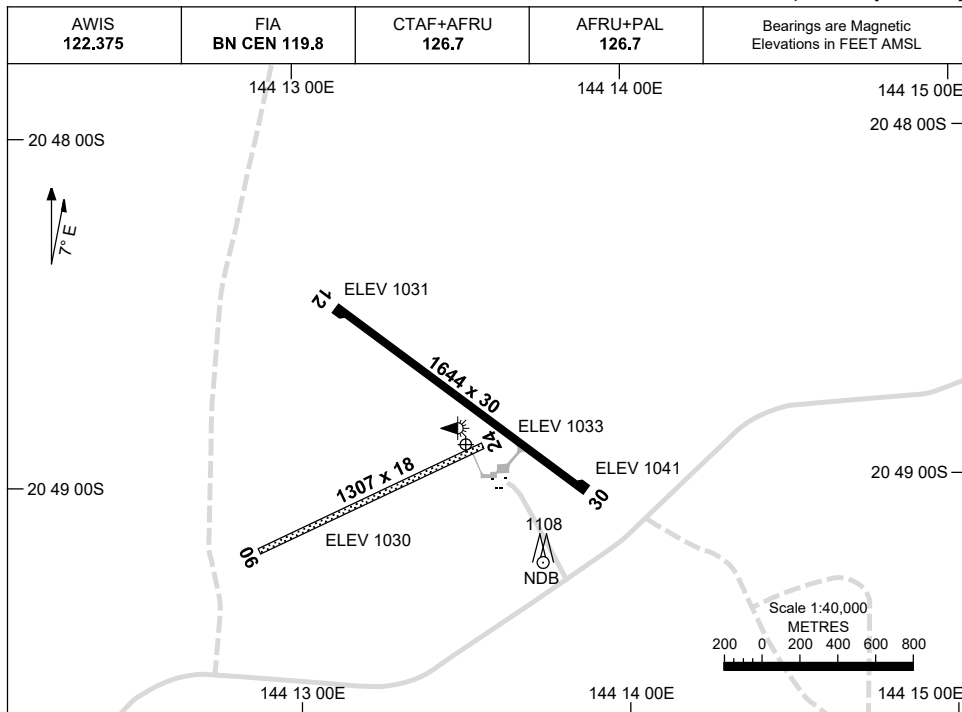


1 DEC 2022

AD ELEV 1043  
20 48 54S 144 13 31E

AERODROME CHART  
**HUGHENDEN, QLD (YHUG)**



	<b>AERODROME LIGHTING</b>	
<b>RWY</b>	RL : AFRU+PAL 126.7 , SDBY (15 SEC)	
<b>12</b> <small>121</small>	LIRL	
<small>301</small> <b>30</b>	LIRL	
<b>06</b> <small>059</small>	NIL	
<small>239</small> <b>24</b>	NIL	

**NOTES**

1. AWIS RQ ONE-SECOND TRANSMIT PULSE TO ACTIVATE.
2. FIA FREQ 119.8 AVBL CIRCUIT AREA.

Changes: SDBY SWITCH TIME.

HUGAD01-173

# GNSS ARRIVAL PROCEDURES HUGHENDEN, QLD (YHUG)

24 MAR 2022

AWIS 122.375	FIA BN CEN 119.8	CTAF+AFRU 126.7	AFRU+PAL 126.7		Bearings are Magnetic Elevations in FEET AMSL
-----------------	---------------------	--------------------	-------------------	--	--

**REFERENCE WAYPOINT HUG NDB**

25 NM MSA  
3700  
HUG NDB  
10 NM MSA 3200

HUG NDB 371

AD ELEV 1043

**SECTOR A**

**MISSED APPROACH:**  
CLIMB ON TRACK TO 3700FT.

NM TO HUG NDB	25	15	10	7	5	4	0											
<b>CIRCLING MINIMA</b>	A,B: 1830-2.4			C: 1990-4.0		D: N/A												
NM TO HUG NDB	8.5	8	7	6	5	4	3.2	2.7										
ALT (3° APCH PATH)	3700	3530	3210	2900	2580	2260	1990	1830										

**SECTOR B**

**MISSED APPROACH:**  
CLIMB ON TRACK TO 3700FT.

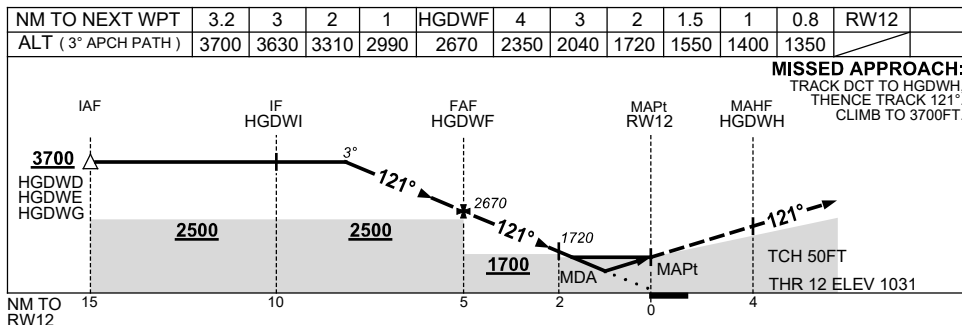
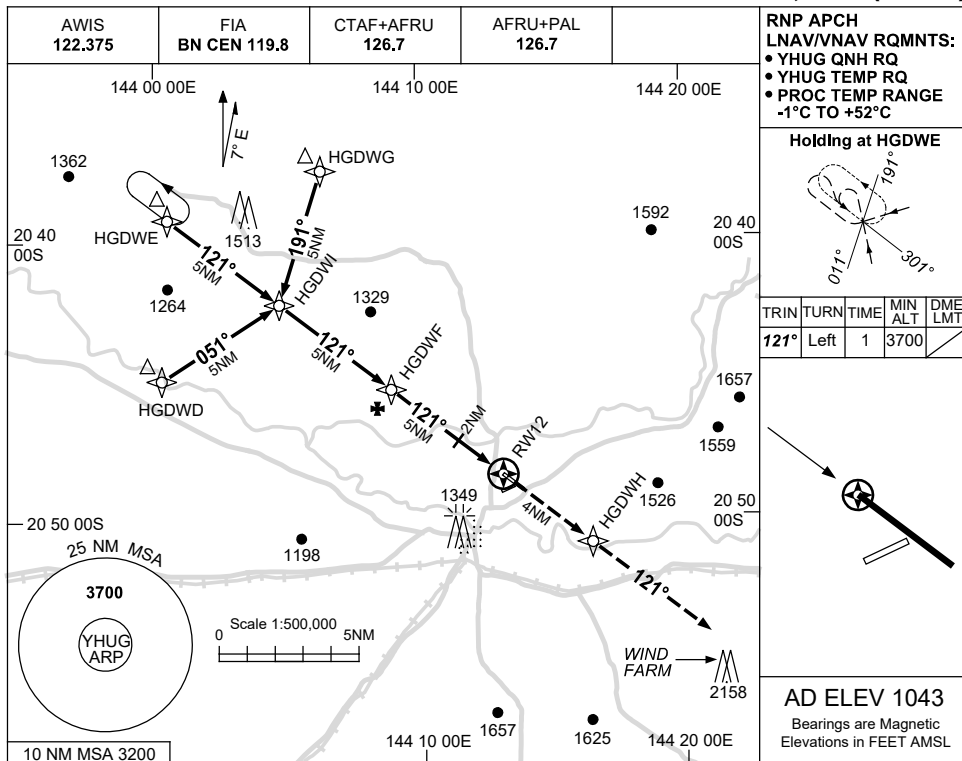
NM TO HUG NDB	25	15	10	7	5	4	0											
<b>CIRCLING MINIMA</b>	A,B: 1900-2.4			C: 1990-4.0		D: N/A												
NM TO HUG NDB	8.3	8	7	6	5	4	3	2.9	2.7									
ALT (3° APCH PATH)	3700	3600	3280	2970	2650	2330	2010	1990	1900									

USE QNH

RNP RWY 12

HUGHENDEN, QLD (YHUG)

8 SEP 2022



**NOTES**

- 1. MAX IAS:  
INITIAL : 210KT.

CATEGORY	A	B	C	D
LNAV/VNAV		1350 (319-1.8)		NOT APPLICABLE
LNAV		1550 (519-2.9)		
CIRCLING	1830 (787-2.4)		1990 (947-4.0)	
ALTERNATE		(1287-4.4)	(1447-6.0)	

Changes: LNAV/VNAV MINIMA SHADED BACKGROUND REMOVED.

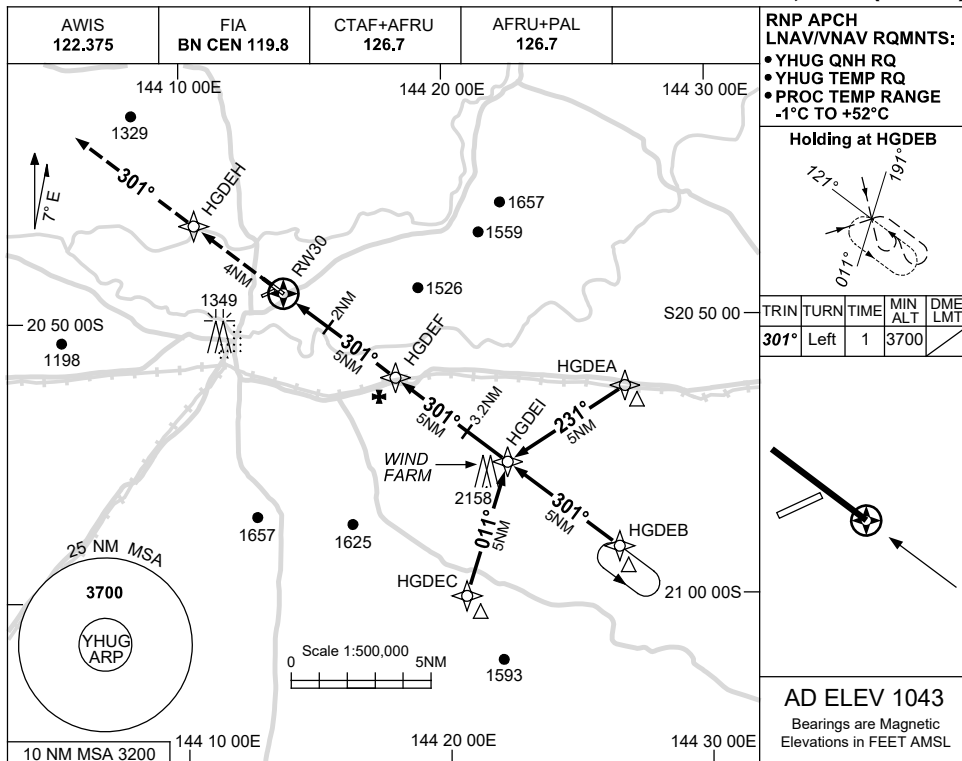
HUGGN01-172

USE QNH

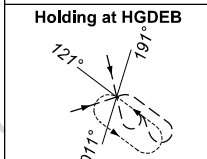
RNP RWY 30

HUGHENDEN, QLD (YHUG)

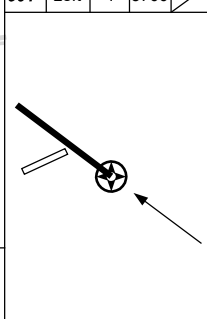
8 SEP 2022



RNP APCH  
LNAV/VNAV RQMNTS:  
• YHUG QNH RQ  
• YHUG TEMP RQ  
• PROC TEMP RANGE  
-1°C TO +52°C

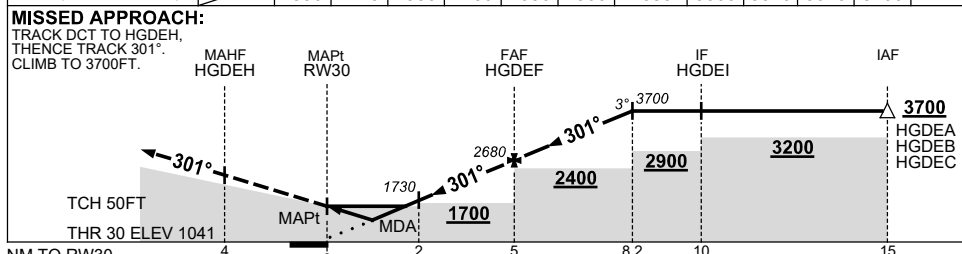


TRIN	TURN	TIME	MIN ALT	DME LMT
301°	Left	1	3700	



AD ELEV 1043  
Bearings are Magnetic  
Elevations in FEET AMSL

NM TO NEXT WPT	RW30	0.9	1	1.5	2	3	4	HGDEF	1	2	3	3.2
ALT (3° APCH PATH)		1390	1410	1580	1730	2050	2360	2680	3000	3320	3640	3700



NOTES

CATEGORY	A	B	C	D
LNAV/VNAV		1390 (349-1.9)		NOT APPLICABLE
LNAV		1580 (537-3.0)		
CIRCLING	1830 (787-2.4)		1990 (947-4.0)	
ALTERNATE	(1287-4.4)		(1447-6.0)	

1. MAX IAS:  
INITIAL : 210KT.

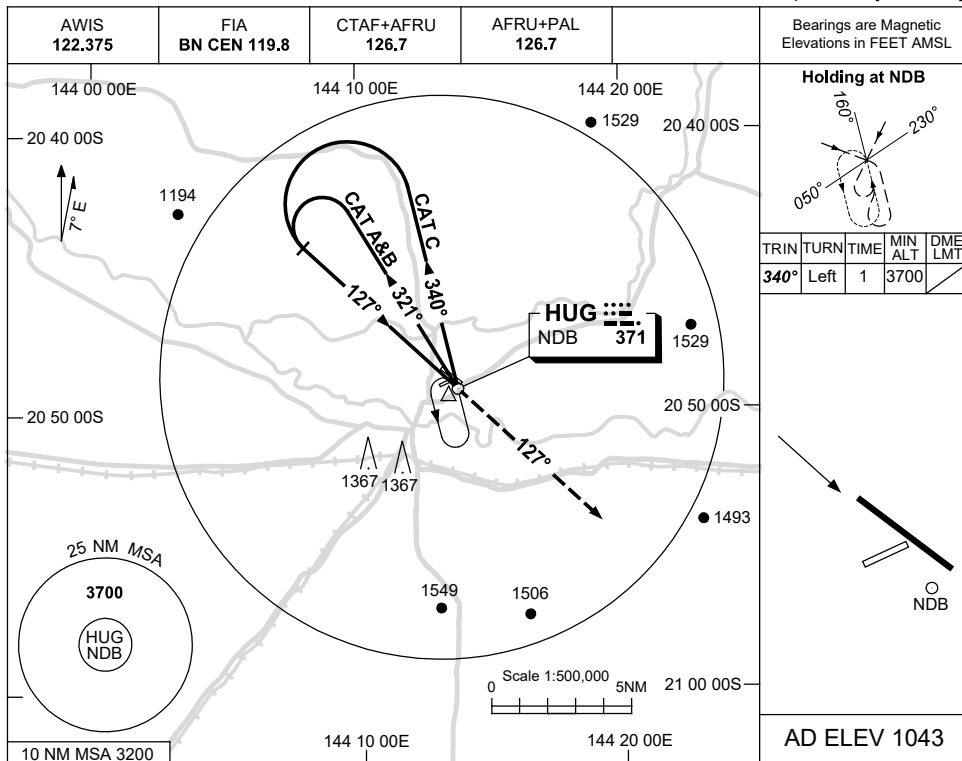
Changes: LNAV/VNAV MINIMA SHADED BACKGROUND REMOVED.

HUGGN02-172

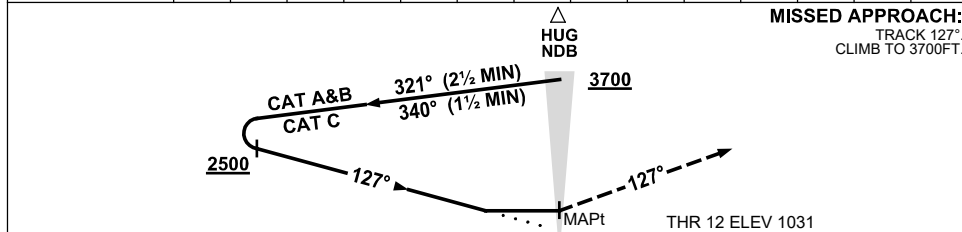
USE QNH

NDB RWY 12  
**HUGHENDEN, QLD (YHUG)**

15 JUN 2023



DME DIST	NOT APPLICABLE									
ALT										



**NOTES**

CATEGORY	A	B	C	D
S-I NDB	1760 (729-4.2)			NOT APPLICABLE
CIRCLING	1830 (787-2.4)		1990 (947-4.0)	
ALTERNATE	(1287-4.4)		(1447-6.0)	

1. MAX IAS:  
 INITIAL :  
 CAT A&B 140KT.  
 CAT C 210KT.

Changes: Editorial.

HUGNB01-175