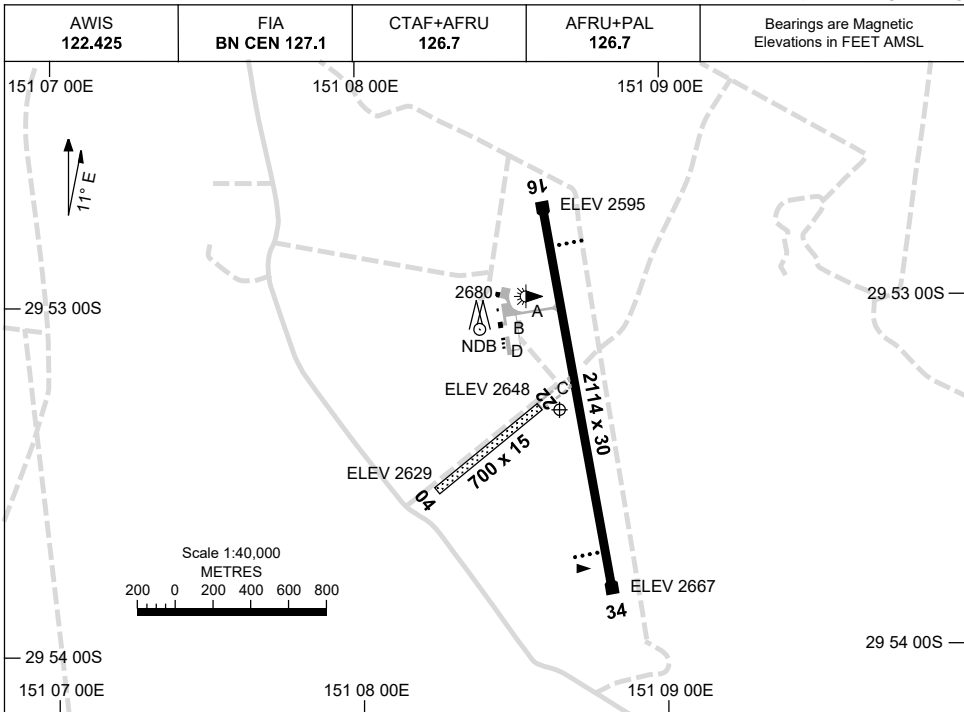


5 SEP 2024

AD ELEV 2669
29 53 18S 151 08 39E

AERODROME CHART
INVERELL, NSW (YIVL)



AERODROME LIGHTING	
RWY	TAXIWAY : BLUE EDGE TWY A RL : AFRU+PAL 126.7 , SDBY (15 SEC)
16 ¹⁵⁹	PAPI 3.0° 41FT LIRL
³³⁹ 34	PAPI 3.0° 41FT LIRL
04 ⁰⁴⁰	NIL
²²⁰ 22	NIL

NOTES

- FIA 127.1 AVBL IN CIRCUIT AREA.
- AWIS RQ ONE SECOND PULSE TO ACTIVATE.

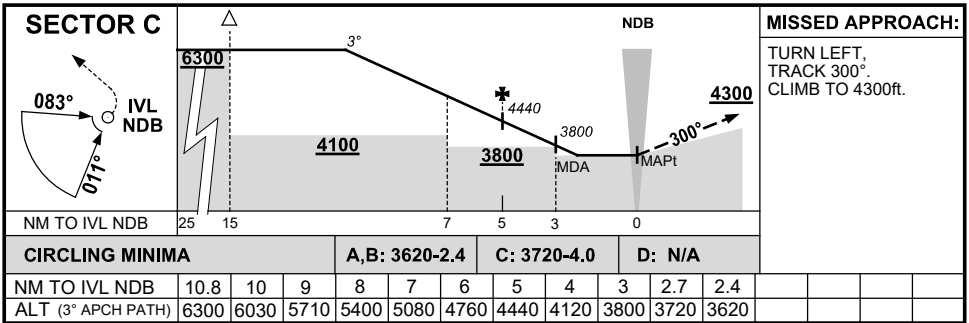
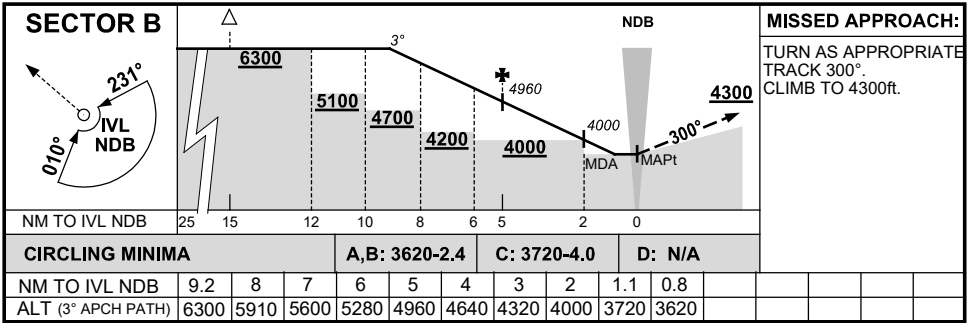
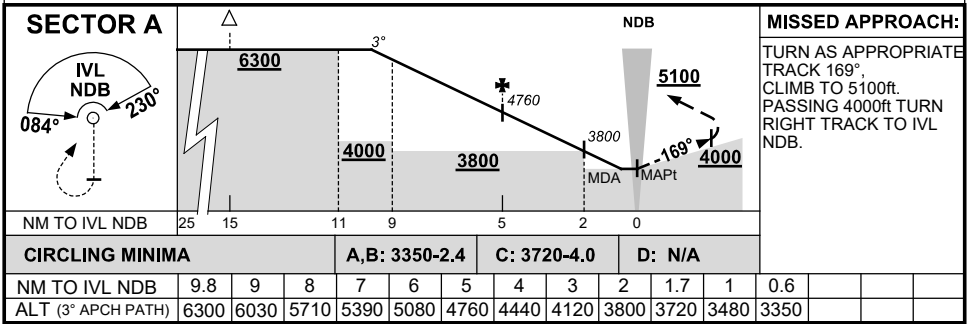
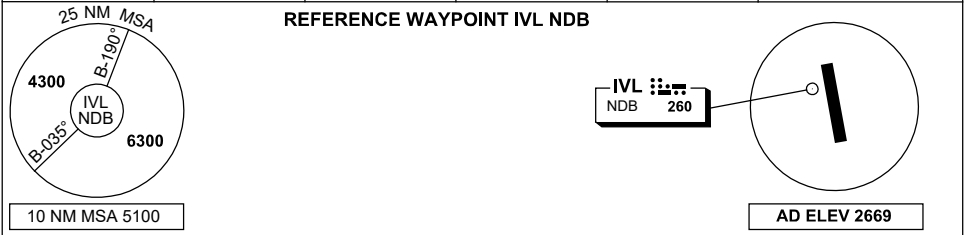
Changes: AD ELEV.

IVLAD01-180

GNSS ARRIVAL PROCEDURES INVERELL, NSW (YIVL)

5 SEP 2024

AWIS 122.425	FIA BN CEN 127.1	CTAF+AFRU 126.7	AFRU+PAL 126.7	Bearings are Magnetic Elevations in FEET AMSL
-----------------	---------------------	--------------------	-------------------	--



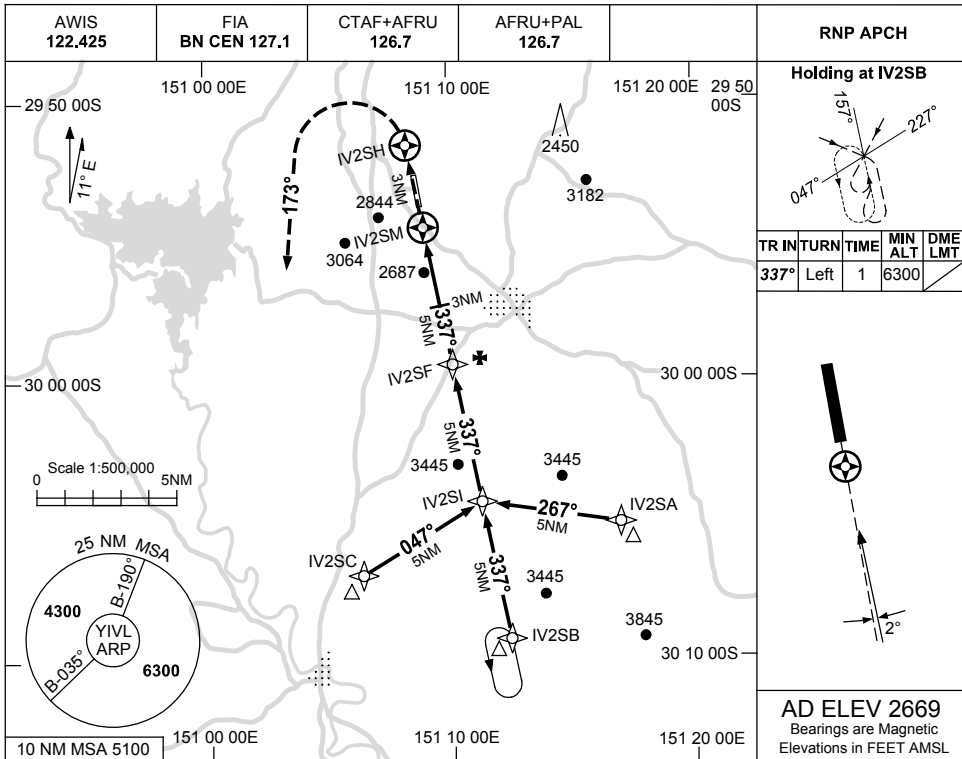
Changes: AD ELEV.

IVLDG01-180

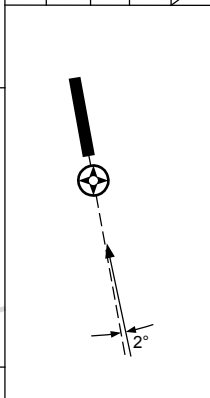
USE QNH

RNP RWY 34
INVERELL, NSW (YIVL)

5 SEP 2024

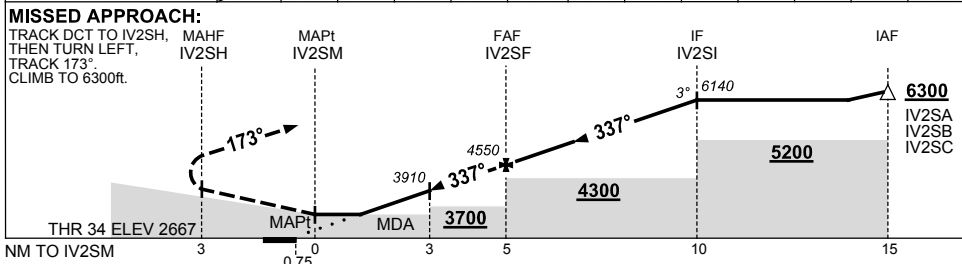


TR	IN	TURN	TIME	MIN ALT	DME LMT
337°	Left	1		6300	



AD ELEV 2669
 Bearings are Magnetic
 Elevations in FEET AMSL

NM TO NEXT WPT	IV2SM	1	2	3	4	IV2SF	1	2	3	4	IV2SI		
ALT (3° APCH PATH)		3270	3590	3910	4230	4550	4870	5190	5510	5820	6140		



NOTES

CATEGORY	A	B	C	D
LNAV	3270 (601-3.4)			NOT APPLICABLE
CIRCLING	3350 (681-2.4)		3720(1051-4.0)	
ALTERNATE	(1181-4.4)		(1551-6.0)	

1. MAX IAS: INITIAL : 210KT.

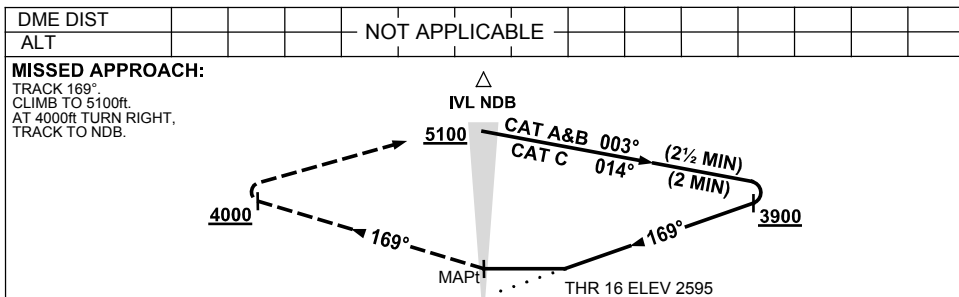
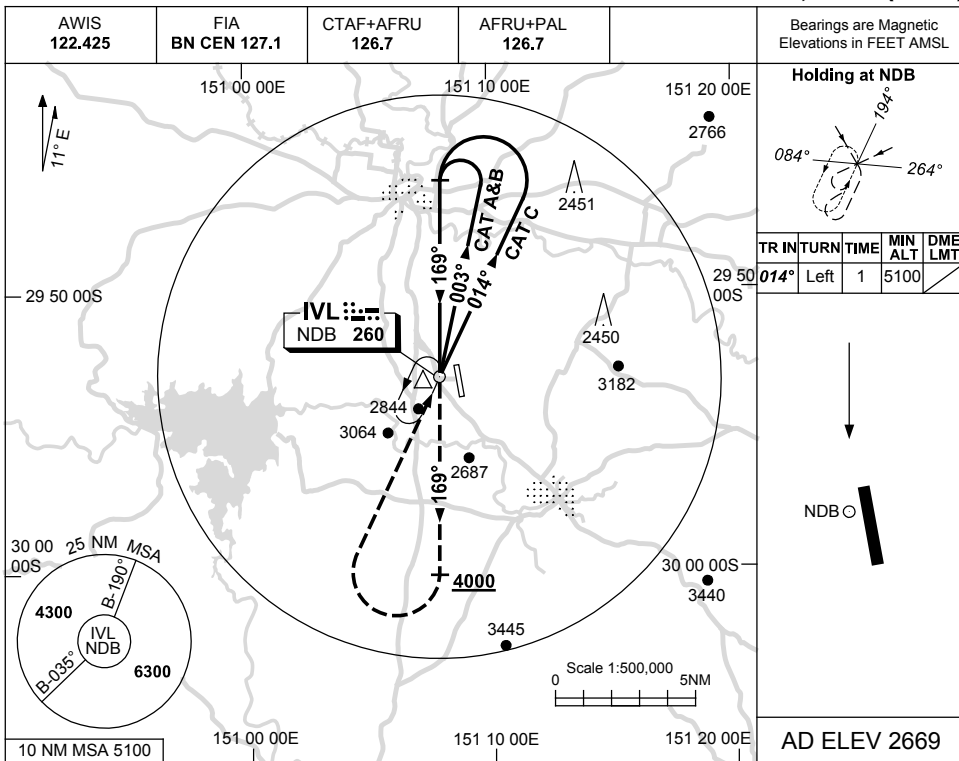
Changes: AD ELEV, WPT NAMING CONVENTION.

IVLGN01-180

USE QNH

NDB RWY 16
INVERELL, NSW (YIVL)

5 SEP 2024



NOTES

CATEGORY	A	B	C	D
S-I NDB	3220 (625-3.6)			NOT APPLICABLE
CIRCLING	3350 (681-2.4)	3720 (1051-4.0)		
ALTERNATE	(1181-4.4)	(1551-6.0)		

1. MAX IAS:
 HOLDING : 210KT.
 INITIAL : 210KT.

Changes: AD ELEV.

IVLNB01-180