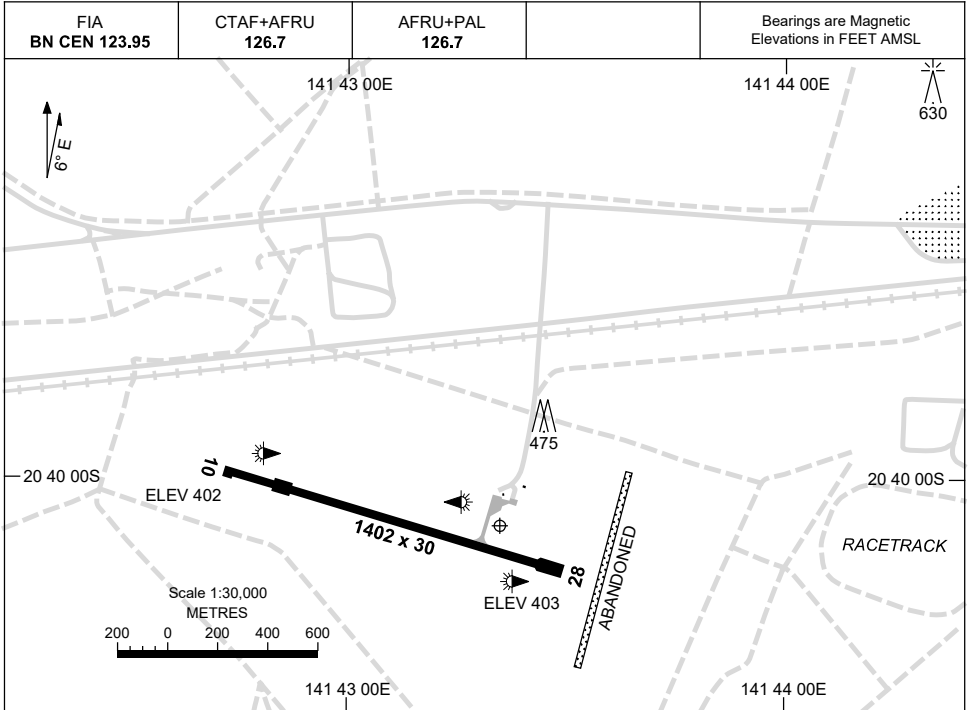


15 JUN 2023

AD ELEV 404
20 40 06S 141 43 21E

AERODROME CHART
JULIA CREEK, QLD (YJLC)



	AERODROME LIGHTING
RWY	TAXIWAY : BLUE EDGE RL : AFRU+PAL 126.7, SDBY (45 SEC)
10 <small>101</small>	LIRL
<small>281</small> 28	LIRL

NOTES

1. FIA FREQ 123.95 AVBL IN CIRCUIT AREA.
2. AWIS (PHONE) 07 3564 3796

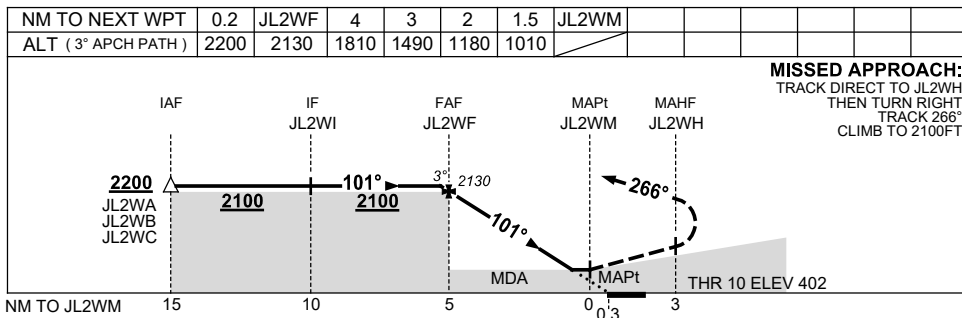
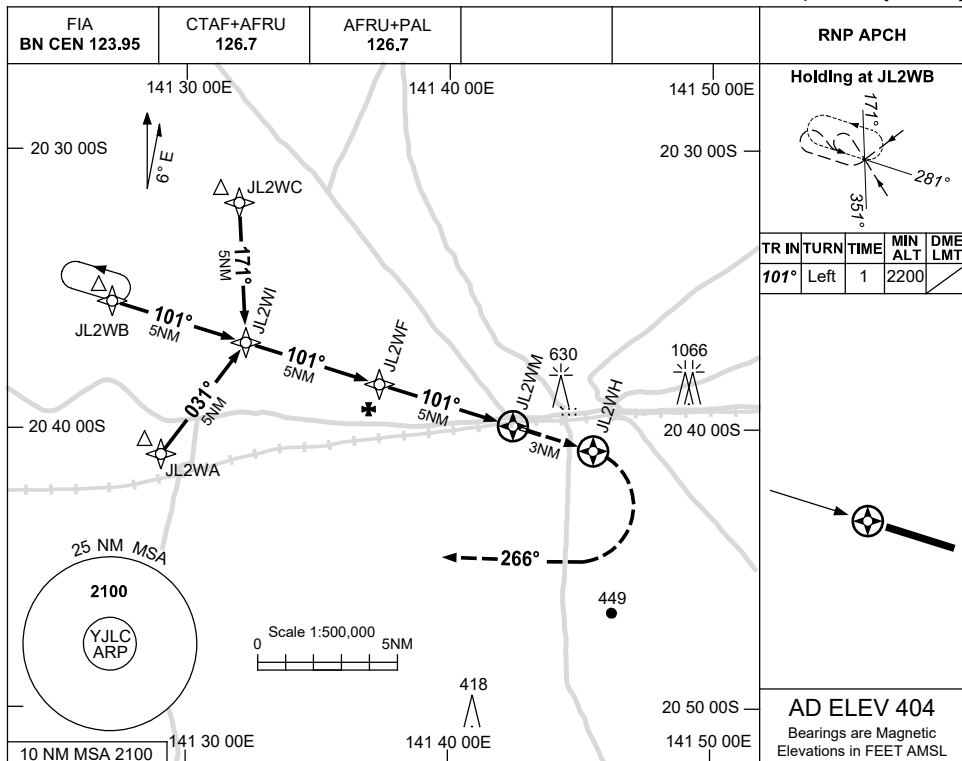
Changes: ADDED NOTE 2.

JLCA01-175

USE QNH

RNP RWY 10
JULIA CREEK, QLD (YJLC)

15 JUN 2023



CATEGORY	A	B	C	D
LNAV	1010 (606-3.4)			NOT APPLICABLE
CIRCLING	1040 (636-2.4)	1140 (736-4.0)		
ALTERNATE	(1136-4.4)	(1236-6.0)		

1. MAX IAS:
INITIAL : 210KT.
 2. AWIS PHONE
07 3564 3796

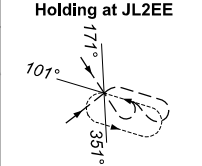
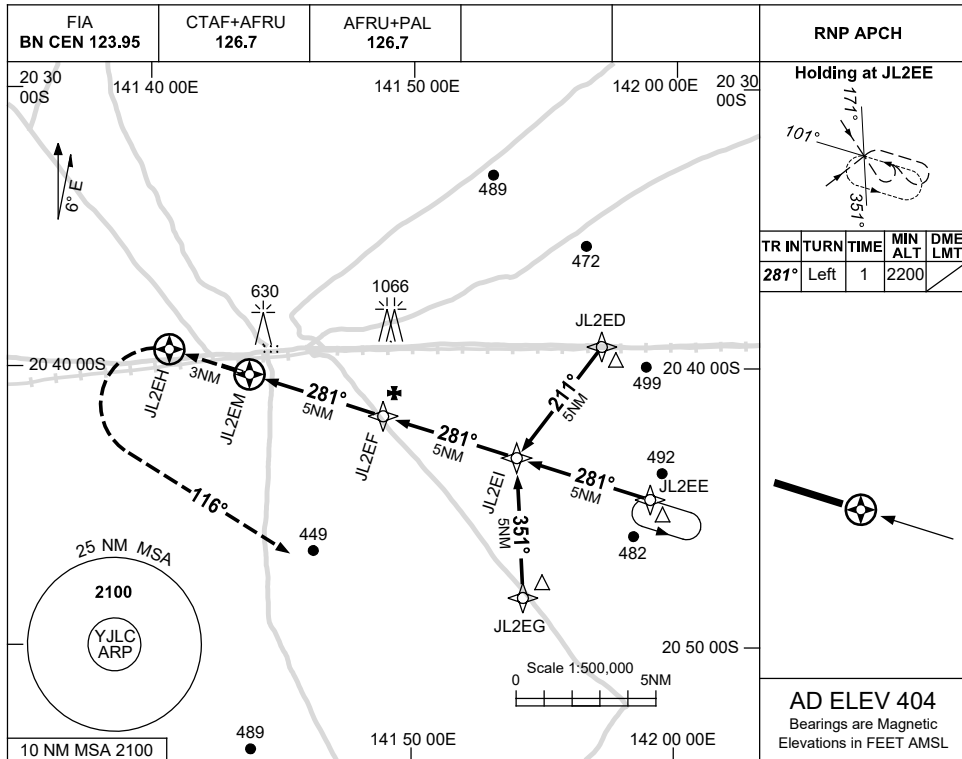
Changes: AWIS PH.

JLCGN01-175

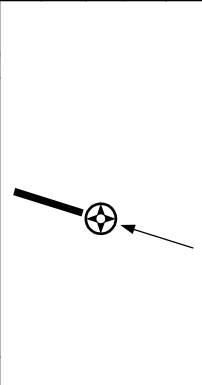
USE QNH

RNP RWY 28
JULIA CREEK, QLD (YJLC)

15 JUN 2023

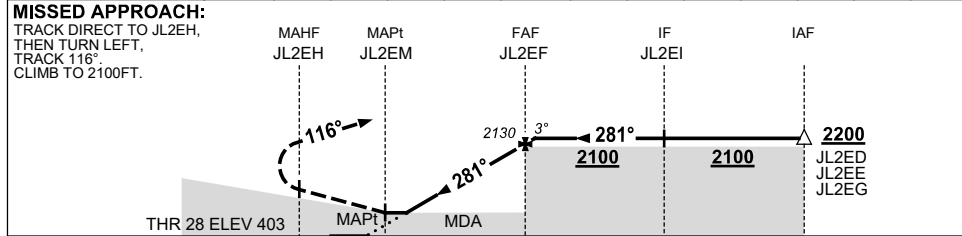


TR	TURN	TIME	MIN ALT	DME LMT
281°	Left	1	2200	



AD ELEV 404
 Bearings are Magnetic
 Elevations in FEET AMSL

NM TO NEXT WPT	JL2EM	1.5	2	3	4	JL2EF	0.2				
ALT (3° APCH PATH)		1010	1180	1490	1810	2130	2200				



NM TO JL2EM 3 0.3 5 10 15

NOTES

CATEGORY	A	B	C	D
LNAV	1010 (606-3.4)			NOT APPLICABLE
CIRCLING	1040 (636-2.4)	1140 (736-4.0)		
ALTERNATE	(1136-4.4)		(1236-6.0)	

- MAX IAS: INITIAL : 210KT.
- AWIS PHONE 07 3564 3796

Changes: AWIS PH.

JLCGN02-175