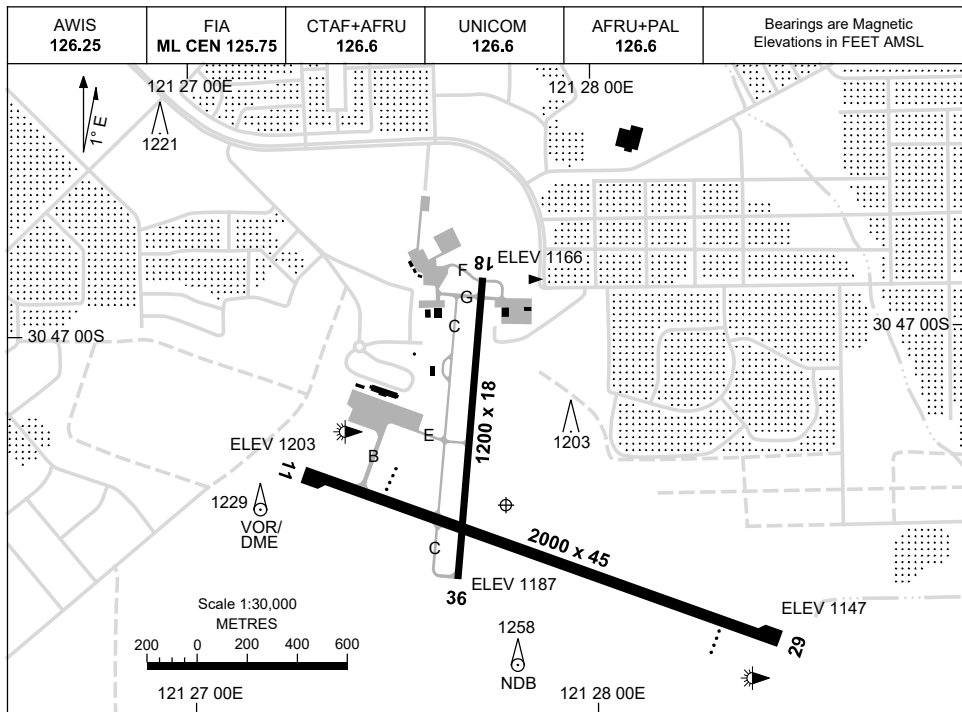


23 MAR 2023

AD ELEV 1203
30 47 22S 121 27 42E

AERODROME CHART
KALGOORLIE-BOULDER, WA (YPKG)



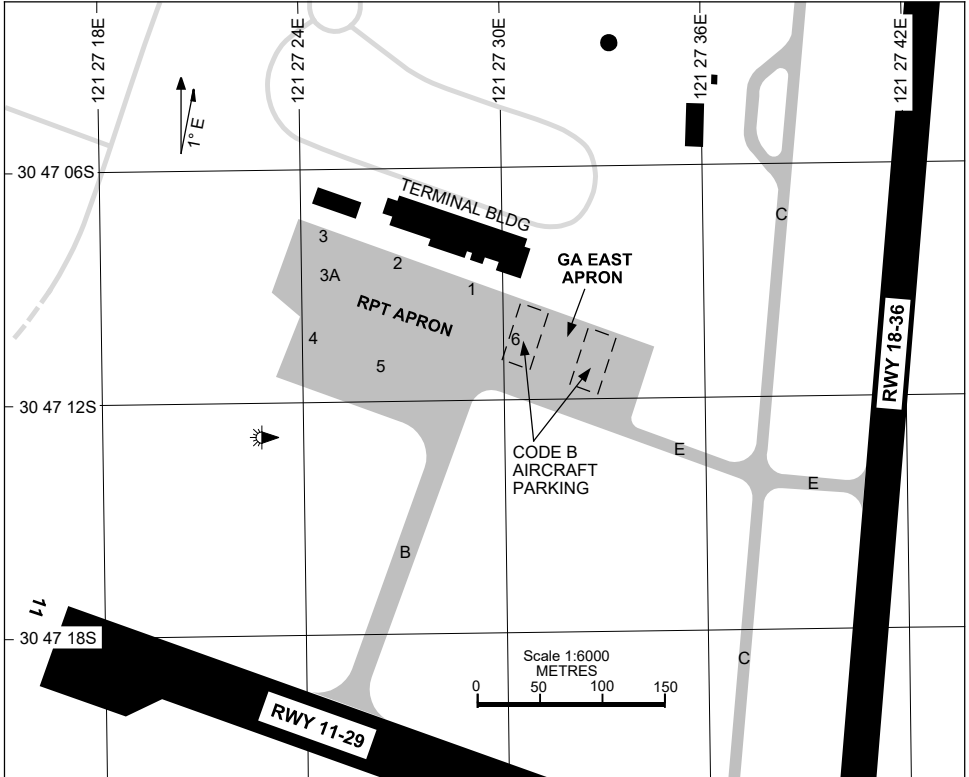
AERODROME LIGHTING	
RWY	TAXIWAYS : BLUE EDGE RL : AFRU+PAL 126.6 , SDBY (15 SEC)
11 ¹¹⁰ 29 ²⁹⁰	PAPI LEFT SIDE 3.0° 48FT LIRL PAPI LEFT SIDE 3.0° 48FT LIRL
18 ¹⁸⁵ 005 36	LIRL LIRL

NOTES

Changes: PAPI, SDBY TIME, NOTES.

PKGAD01-174

25 MAR 2021



PARKING POSITION INFORMATION

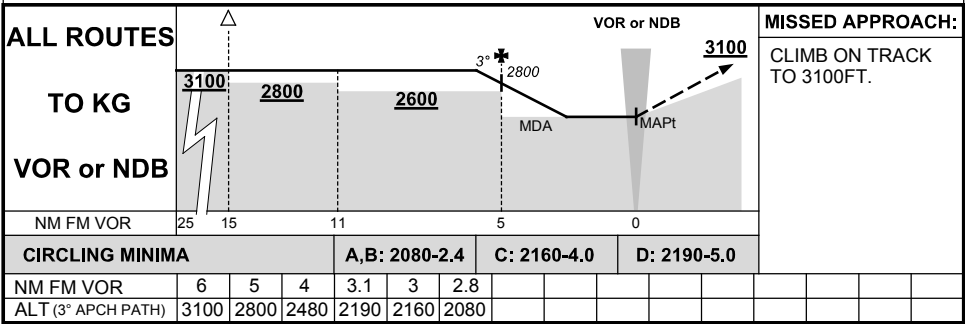
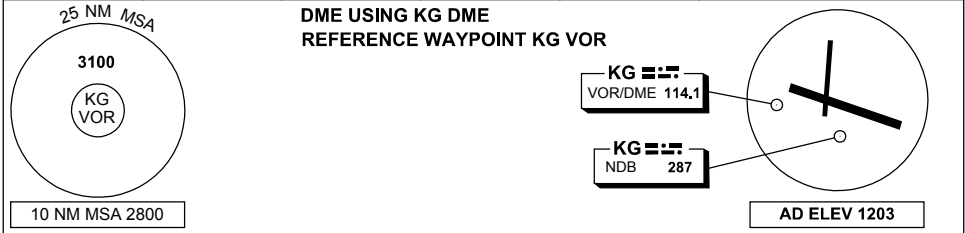
STAND	CO-ORDINATES		ELEV (ft)	CAPACITY	HYDRANT FUEL
1	30 47 09.20S	121 27 29.30E	1181	A320/B738	NIL
2	30 47 08.48S	121 27 27.09E	1181	A320	NIL
3	30 47 07.85S	121 27 24.51E	1181	A320/B738/C130	NIL
3A	30 47 08.65S	121 27 24.83E	1181	A333/B789	NIL
4	30 47 10.39S	121 27 24.15E	1181	A321/B738	NIL
5	30 47 11.12S	121 27 26.28E	1181	A321/B738	NIL
6	30 47 10.51S	121 27 30.40E	1181	DH8B/SF34	NIL

Changes: BAY 1A DELETED, BAY COORDS UPDATE, BAY 2-5 CAPACITY UPDATE, BAY 6 ADDED, "GA EAST" APN LABEL ADDED, CHART NAME CHANGE.

DME or GNSS ARRIVAL PROCEDURES KALGOORLIE-BOULDER, WA (YPKG)

9 NOV 2017

AWIS 126.25	FIA ML CEN 125.75	CTAF+AFRU 126.6	UNICOM 126.6	AFRU+PAL 126.6	Bearings are Magnetic Elevations in FEET AMSL
----------------	----------------------	--------------------	-----------------	-------------------	--

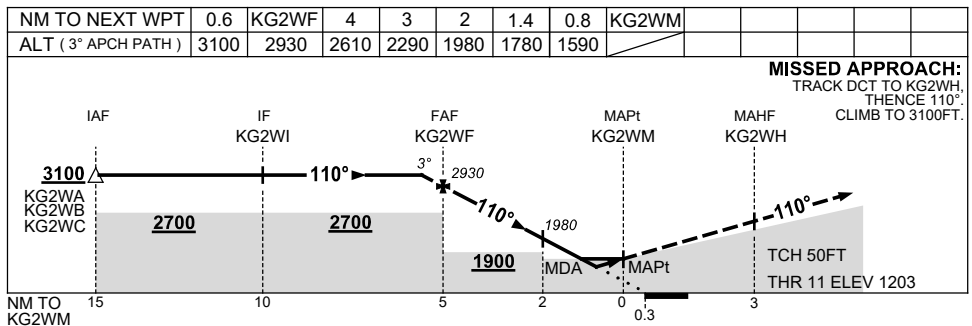
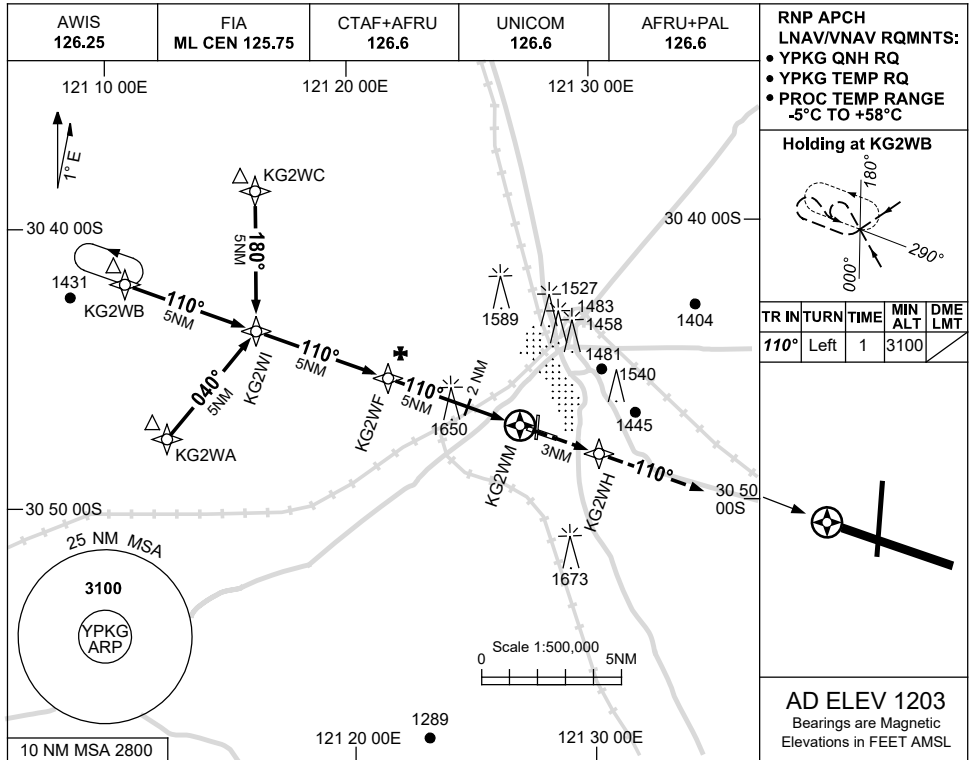


USE QNH

RNP Z RWY 11

7 SEP 2023

KALGOORLIE-BOULDER, WA (YPKG)



NOTES

1. MAX IAS:
INITIAL : 210KT.
- CAUTION:**
1650FT RADIO MAST
2.5NM 280°KG VOR/
DME ON RWY APCH
PATH.

CATEGORY	A	B	C	D
LNAV/VNAV		1590 (387-2.2)		
LNAV		1780 (577-3.3)		
CIRCLING	2060 (857-2.4)		2160 (957-4.0)	2190 (987-5.0)
ALTERNATE	(1357-4.4)		(1457-6.0)	(1487-7.0)

Changes: CHART TITLE, PBN SPECIFICATION BOX, Editorial.

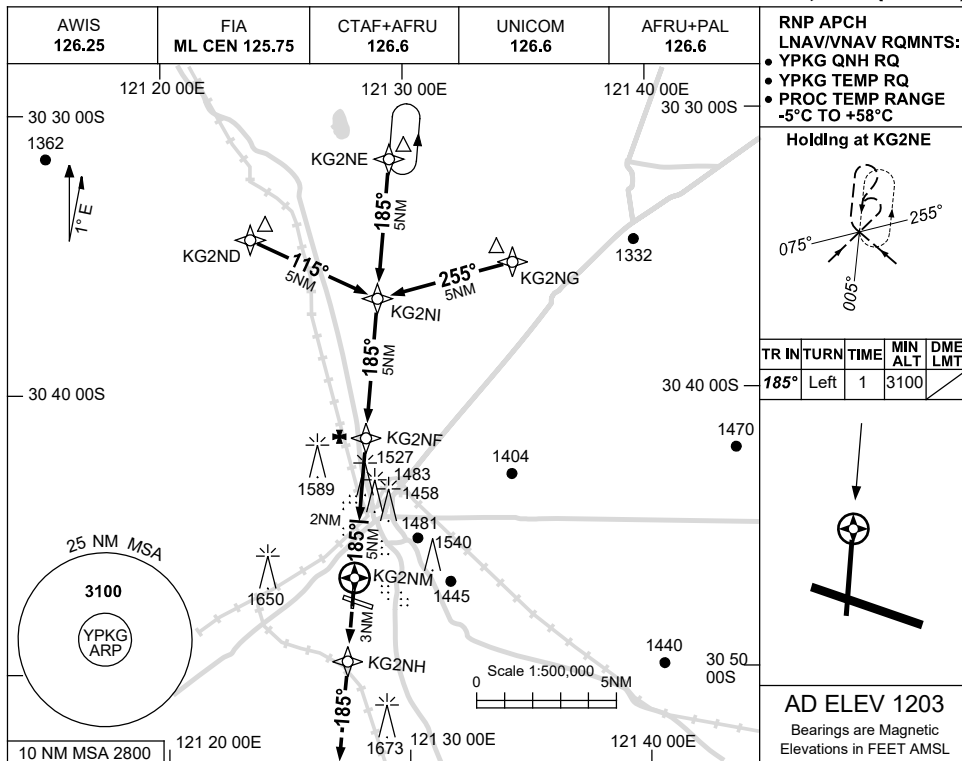
PKGGN01-176

USE QNH

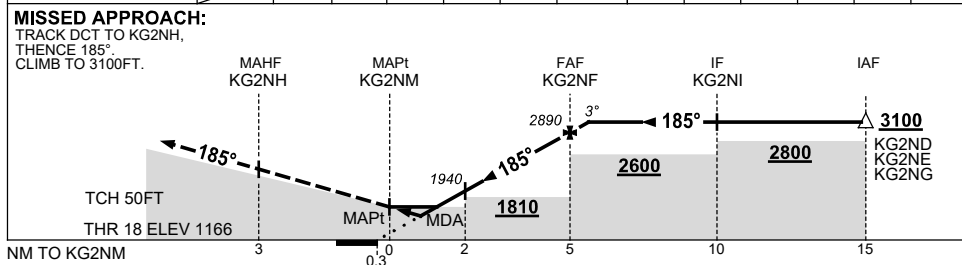
RNP RWY 18

7 SEP 2023

KALGOORLIE-BOULDER, WA (YPKG)



NM TO NEXT WPT	KG2NM	0.7	1.5	2	3	4	KG2NF	0.6				
ALT (3° APCH PATH)		1510	1780	1940	2260	2580	2890	3100				



NOTES

CATEGORY	A	B	C	D	CAUTION: 1650FT RADIO MAST 2.5NM 280° KG VOR/DME.
LNAV/VNAV	1510 (344-1.9)		NOT APPLICABLE		
LNAV	1780 (614-3.5)				
CIRCLING	2060 (857-2.4)				
ALTERNATE	(1357-4.4)				

Changes: CHART TITLE, PBN SPECIFICATION BOX, Editorial.

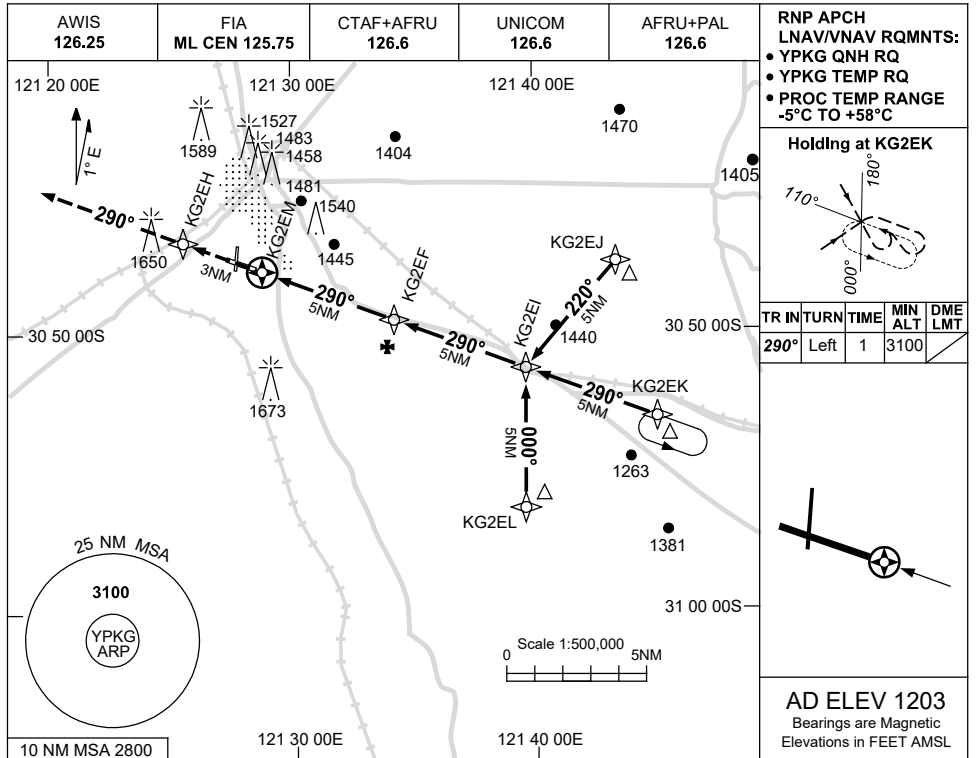
PKGGN02-176

USE QNH

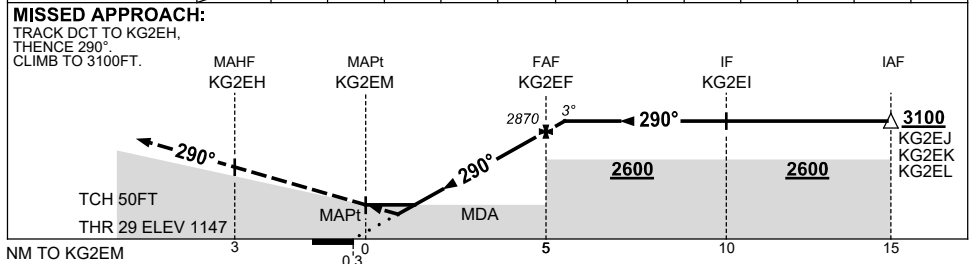
RNP Z RWY 29

7 SEP 2023

KALGOORLIE-BOULDER, WA (YPKG)



NM TO NEXT WPT	KG2EM	0.7	1.6	2	3	4	KG2EF	0.7					
ALT (3° APCH PATH)		1490	1780	1920	2240	2560	2870	3100					



NOTES

CATEGORY	A	B	C	D
LNAV/VNAV	1490 (343-1.9)			
LNAV	1780 (633-3.6)			
CIRCLING	2060 (857-2.4)		2160 (957-4.0)	
ALTERNATE	(1357-4.4)		(1487-7.0)	

1. MAX IAS:
INITIAL : 210KT.
- CAUTION:**
1650FT RADIO MAST
2.5NM 280° KG
VOR/DME.

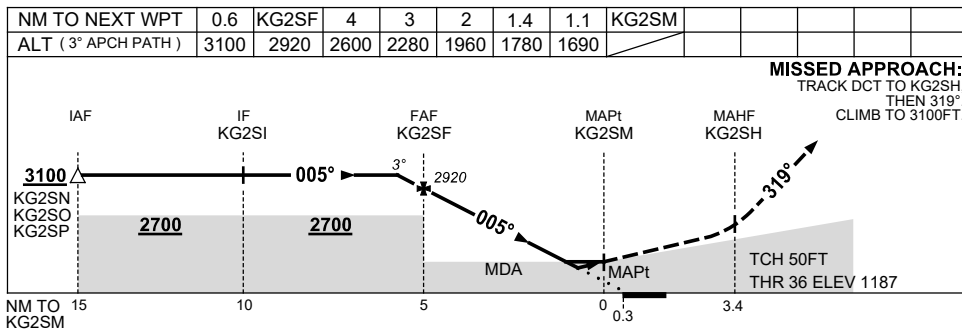
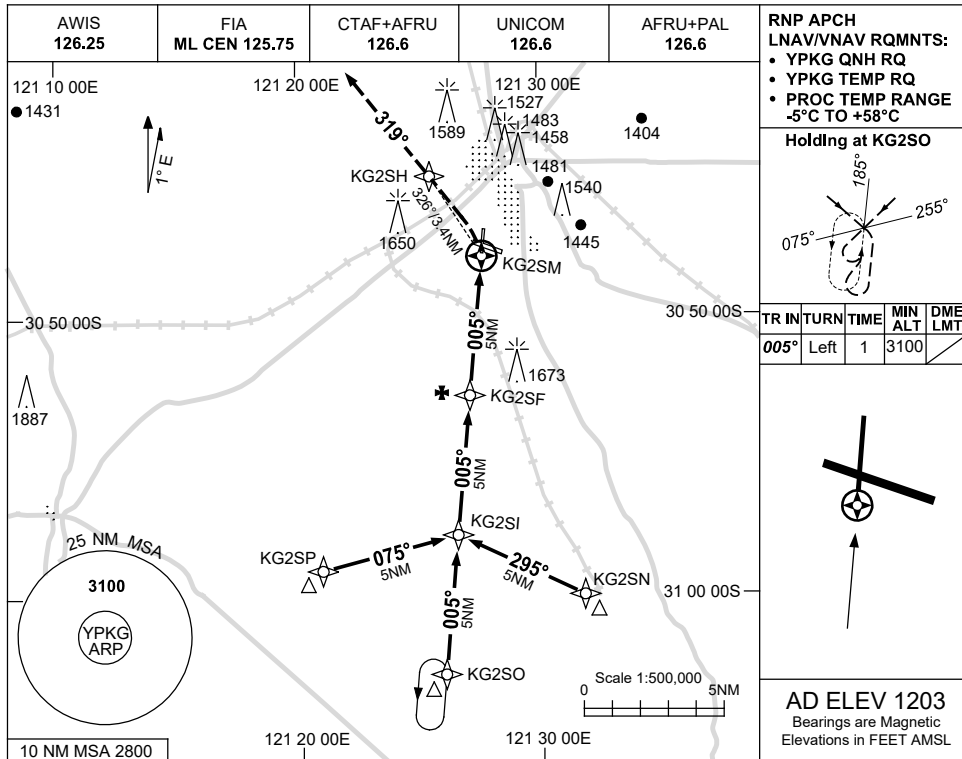
Changes: CHART TITLE, PBN SPECIFICATION BOX, Editorial. PKGGN03-176

USE QNH

RNP RWY 36

13 JUN 2024

KALGOORLIE-BOULDER, WA (YPKG)



NOTES

CATEGORY	A	B	C	D
LNAV/VNAV	1690 (503-2.8)		NOT APPLICABLE	
LNAV	1780 (593-3.4)			
CIRCLING	2060 (857-2.4)			
ALTERNATE	(1357-4.4)			

CAUTION:
1650FT RADIO MAST
2.5NM 280° KG
VOR/DME.

Changes: LNAV/VNAV MINIMA, DIST-ALT TABLE.

PKGGN04-179

USE QNH

RNP U RWY 11 (AR)

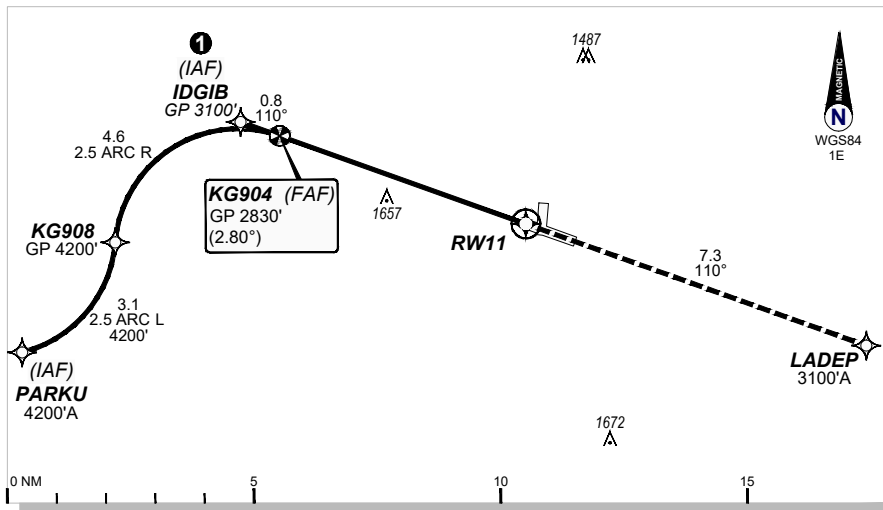
7 SEP 2023

KALGOORLIE-BOULDER (YPKG)

AWIS 126.25	FIA ML CEN 125.75	CTAF + AFRU 126.6	UNICOM 126.6	AFRU + PAL 126.6	RNP AR APCH -RF RQ -YPKG ACT QNH RQ -YPKG ACT TEMP RQ -PROCE TEMP RANGE -2°C TO +46°C
RNP AR RNV U 11	Apt Elev. 1203' TDZE 1203'	KG904 (FAF) GP 2830' (2.80°)	Trans Level FL110		

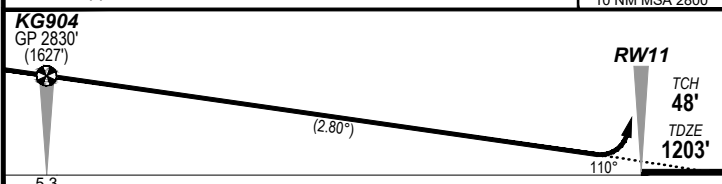
GE PROPRIETARY INFORMATION

① Latest position where the aircraft can join the procedure.



MISSED APPROACH:

Climb to 3100' via the RNP AR
Missed Approach track to LADEP.



NOTES:

1. Minimum MAP gradient (AE) 3.5% to 3100 FT.

				RNP 0.30
				DA(H) 1543' (340')
C	C	C	C	1900m

FOR CASA APPROVED OPERATORS ONLY

202305171434COPYRIGHT 2023 NAVERUS, INC. USA

Changes: PROC NAME, RNAV (RNP) to RNP AR, Added PBN BOX, Removed Note 2, Removed background image.

PKGGN05-176

DO NOT USE FOR NAVIGATION



USE QNH

RNP U RWY 29 (AR)

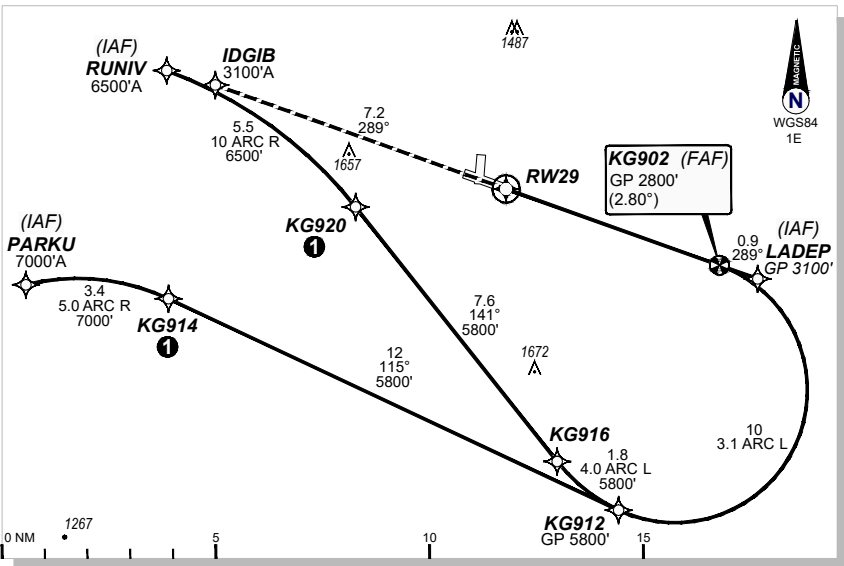
KALGOORLIE-BOULDER (YPKG)

7 SEP 2023

AWIS 126.25	FIA ML CEN 125.75	CTAF + AFRU 126.6	UNICOM 126.6	AFRU + PAL 126.6	RNP AR APCH -RF RQ -YPKG ACT QNH RQ -YPKG ACT TEMP RQ -PROCE TEMP RANGE -2°C TO +46°C
RNP AR RNV U 29	Apt Elev. 1203' TDZE 1147'	KG902 (FAF) GP 2800' (2.80°)	Trans Level FL110		

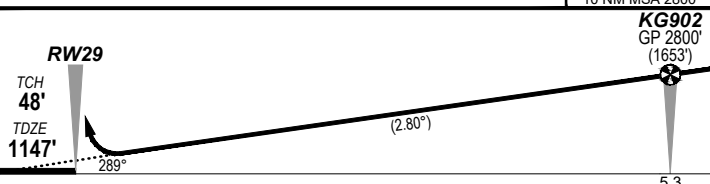
GE PROPRIETARY INFORMATION

① Latest position where the aircraft can join the procedure.



MISSED APPROACH:

Climb to 3100' via the RNP AR
Missed Approach track to IDGIB.



NOTES:

- 1. Minimum MAP gradient (AE) 3.8% to 3100 FT.

		RNP 0.20	RNP 0.30
		DA(H) 1429' (282)	DA(H) 1503' (356')
C	C	1500m	2000m

FOR CASA APPROVED OPERATORS ONLY

202305171434COPYRIGHT 2023 NAVERUS, INC. USA

Changes: PROC NAME, RNAV (RNP) to RNP AR, Added PBN BOX, Removed Note 2, Removed background image.

PKGKN06-176

DO NOT USE FOR NAVIGATION

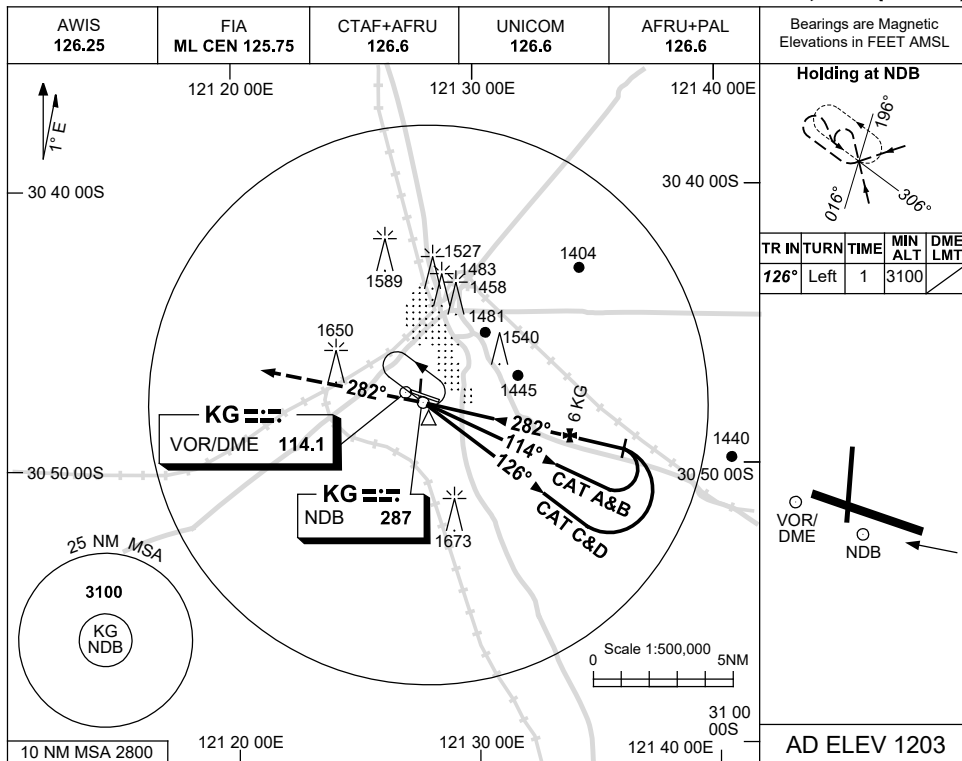


USE QNH

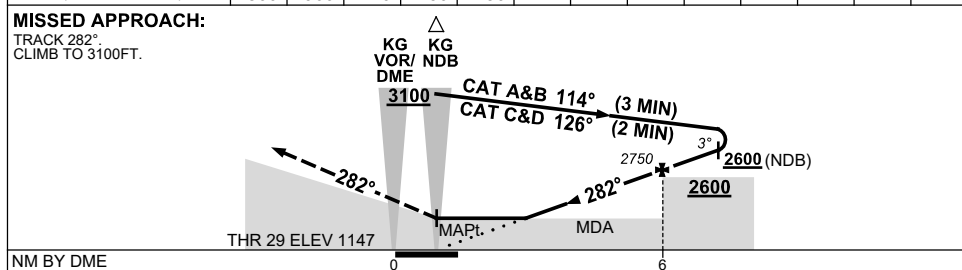
NDB RWY 29

KALGOORLIE-BOULDER, WA (YPKG)

13 JUN 2024



DME DIST	3	3.5	4	5	6								
ALT (3° APCH PATH)	1800	1960	2110	2430	2750								



NOTES

1. MAX IAS:
INITIAL :
CAT C&D 210KT.
- CAUTION:**
1650FT RADIO MAST
2.5NM 280° KG
VOR/DME.

CATEGORY	A	B	C	D
S-I NDB		1960 (813-4.6)		
S-I NDB/DME		1800 (653-3.7)		
CIRCLING	2060 (857-2.4)		2160(957-4.0)	2190(987-5.0)
ALTERNATE	(1357-4.4)		(1457-6.0)	(1487-7.0)

Changes: CAT A/B MAX SPEED REMOVED, COORD FORMAT.

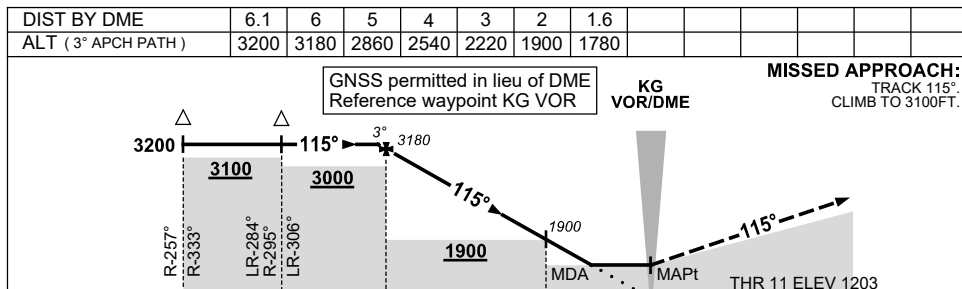
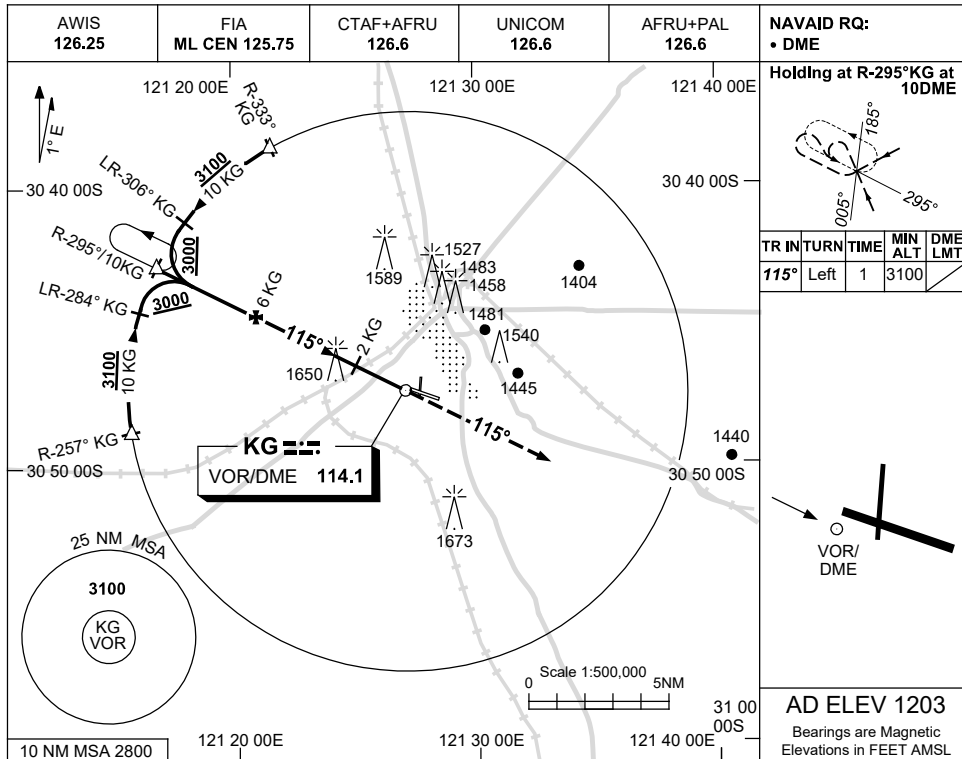
PKGNB01-179

USE QNH

VOR-Z RWY 11

KALGOORLIE-BOULDER, WA (YPKG)

13 JUN 2024



CATEGORY	A	B	C	D
S-I VOR/DME	1780 (577-3.3)			
CIRCLING	2060 (857-2.4)	2160 (957-4.0)	2190 (987-5.0)	
ALTERNATE	(1357-4.4)	(1457-6.0)	(1487-7.0)	

- NOTES**
- MAX IAS:
INITIAL : 210KT.
- CAUTION:**
1650FT RADIO MAST
2.5NM 280° KG VOR/
DME ON RWY APCH
PATH.

Changes: VISIBILITY, COORD FORMAT.

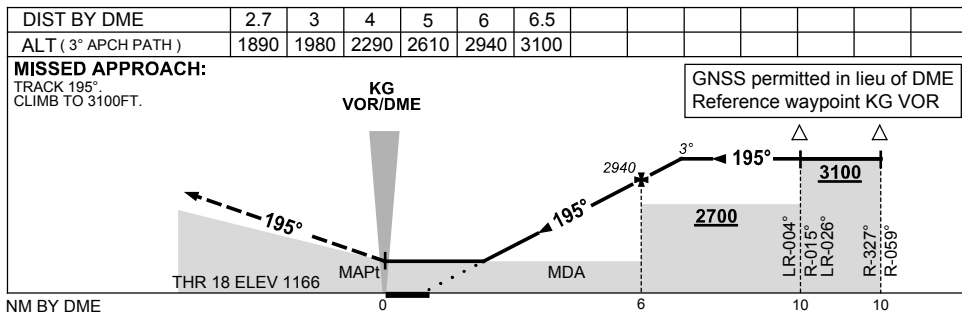
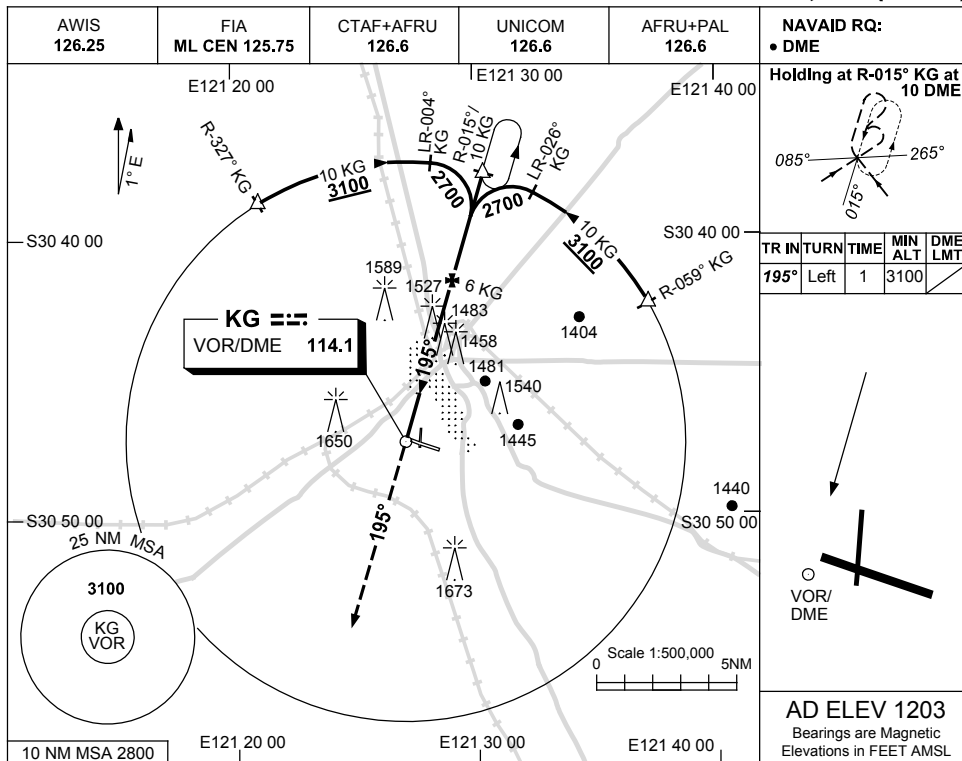
PKGVO01-179

USE QNH

VOR-Z RWY 18

9 NOV 2017

KALGOORLIE-BOULDER, WA (YPKG)



CATEGORY	A	B	C	D
S-I VOR/DME	1890 (724-4.1)		NOT APPLICABLE	
CIRCLING	2060 (857-2.4)			
ALTERNATE	(1357-4.4)			

NOTES

- MAX IAS:
INITIAL : 210KT.

CAUTION:
1650FT RADIO MAST
2.5NM 280° KG
VOR/DME.

Changes: DIST/ALT TABLE.

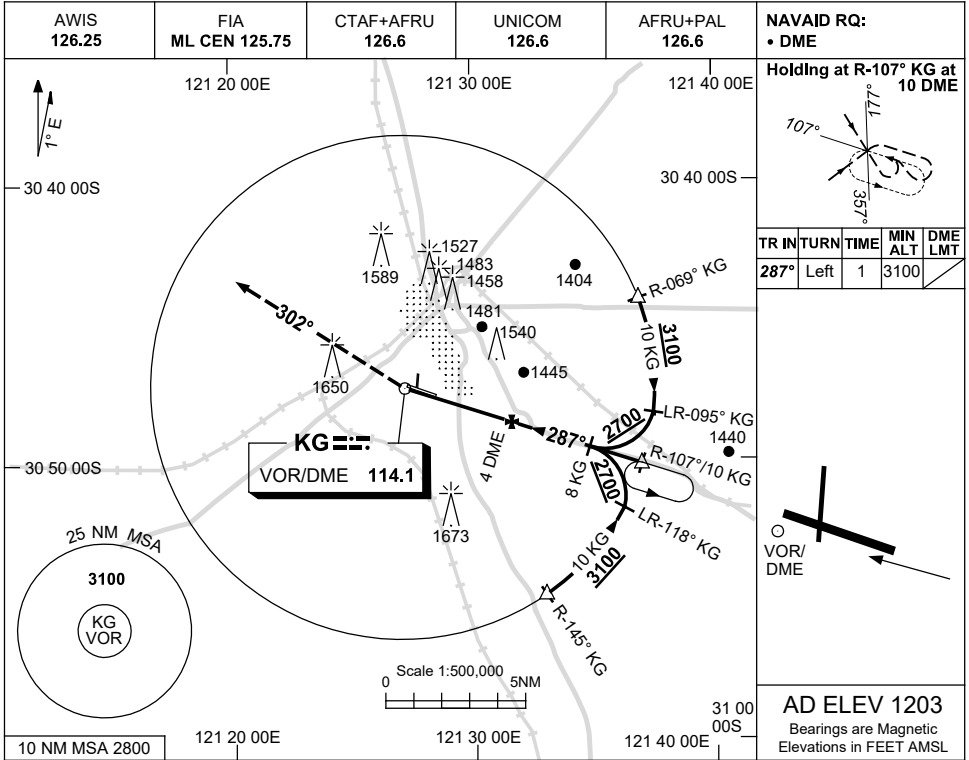
PKGVO02-153

USE QNH

VOR-Z RWY 29

KALGOORLIE-BOULDER, WA (YPKG)

13 JUN 2024

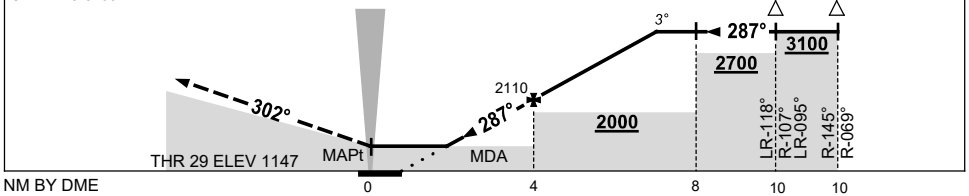


DIST BY DME	3	4	5	6	7	7.1						
ALT (3° APCH PATH)	1780	2110	2430	2740	3060	3100						

MISSED APPROACH:

TURN RIGHT,
TRACK 302°.
CLIMB TO 3100FT.

GNSS permitted in lieu of DME
Reference waypoint KG VOR



NOTES

- MAX IAS:
INITIAL : 210KT.
- CAUTION:**
1650FT RADIO MAST
2.5NM 280° KG
VOR/DME.

CATEGORY	A	B	C	D
S-I VOR/DME	1780 (633-3.6)			
CIRCLING	2060 (857-2.4)	2160 (957-4.0)	2190 (987-5.0)	
ALTERNATE	(1357-4.4)	(1457-6.0)	(1487-7.0)	

Changes: S-I VOR/DME MINIMA, DIST-ALT TABLE, MAGNETIC HEADING, COORD FORMAT, Editorial.

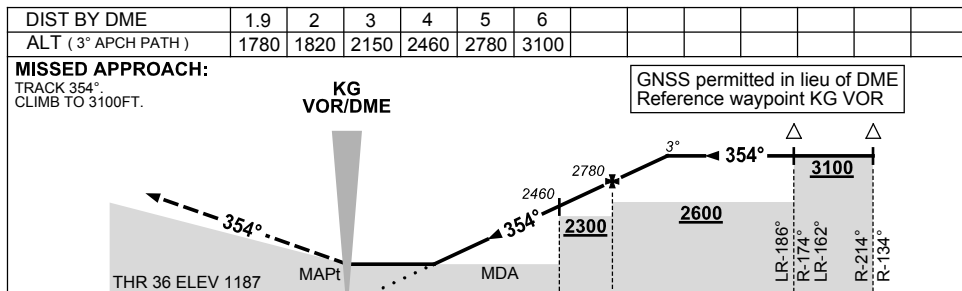
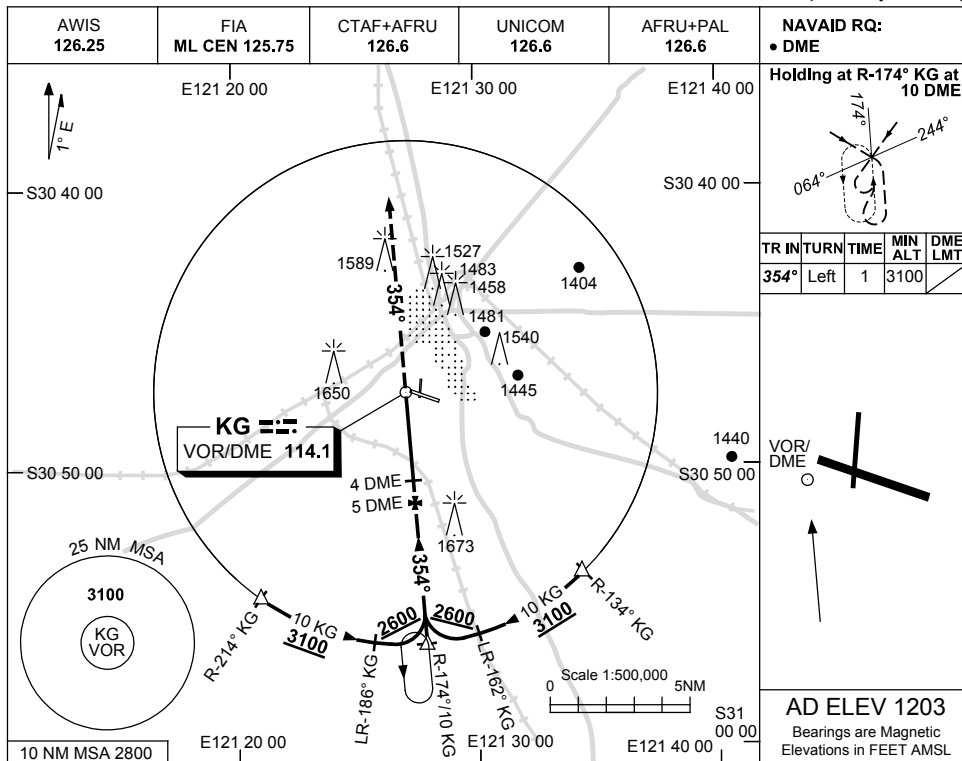
PKGVO03-179

USE QNH

VOR-Z RWY 36

2 MAR 2017

KALGOORLIE-BOULDER, WA (YPKG)



NOTES

CATEGORY	A	B	C	D
S-I VOR/DME	1780 (593-3.4)		NOT APPLICABLE	
CIRCLING	2060 (857-2.4)			
ALTERNATE	(1357-4.4)			

1. MAX IAS:
INITIAL : 210KT.

CAUTION
1650FT RADIO MAST
2.5NM 280° KG
VOR/DME.

Changes: 1650FT TWR.

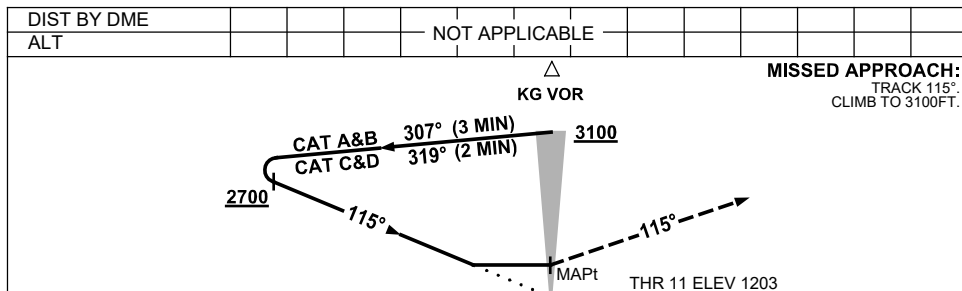
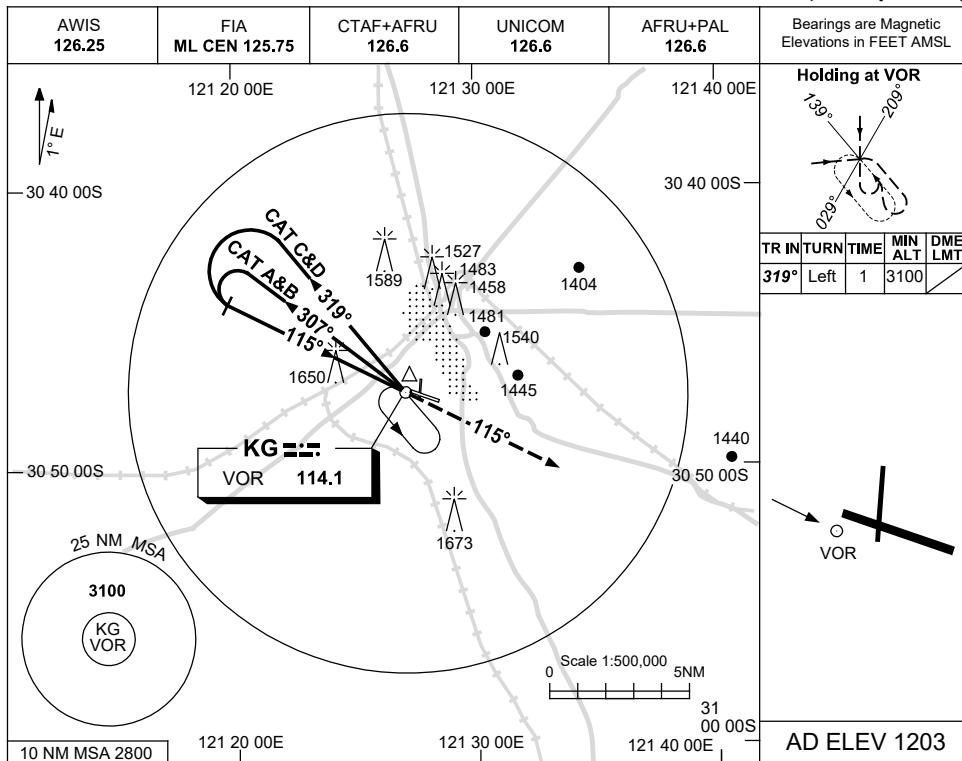
PKGVO04-150

USE QNH

VOR-Y RWY 11

KALGOORLIE-BOULDER, WA (YPKG)

13 JUN 2024



NOTES

- MAX IAS:
INITIAL :
CAT C&D 210KT.
CAUTION:
1650FT RADIO MAST
2.5NM 280° KG VOR/
DME ON RWY APCH
PATH.

CATEGORY	A	B	C	D
S-I VOR	2030 (827-4.7)			
CIRCLING	2060 (857-2.4)	2160 (957-4.0)	2190 (987-5.0)	
ALTERNATE	(1357-4.4)	(1457-6.0)	(1487-7.0)	

Changes: CAT A/B MAX SPEED REMOVED, COORD FORMAT.

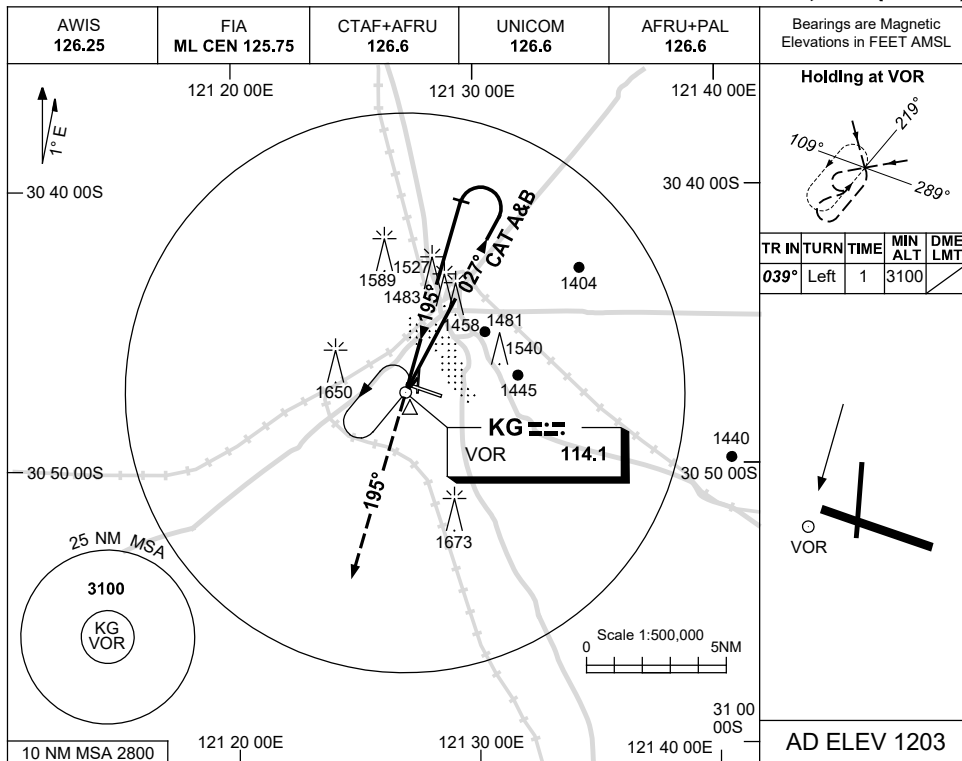
PKGVO05-179

USE QNH

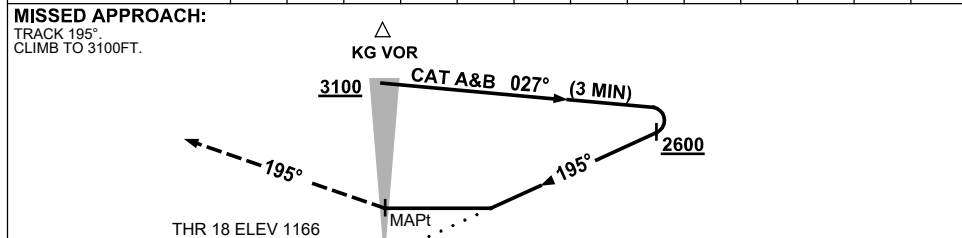
VOR-Y RWY 18

13 JUN 2024

KALGOORLIE-BOULDER, WA (YPKG)



DIST BY DME					
ALT	NOT APPLICABLE				



CATEGORY	A	B	C	D
S-I VOR	1940 (774-4.4)		NOT APPLICABLE	
CIRCLING	2060 (857-2.4)			
ALTERNATE	(1357-4.4)			

NOTES
CAUTION:
1650FT RADIO MAST
2.5NM 280° KG
VOR/DME.

Changes: NOTE 1 REMOVED, COORD FORMAT, Editorial.

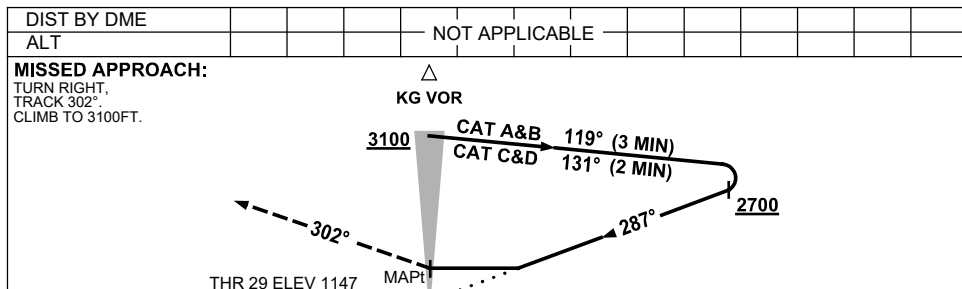
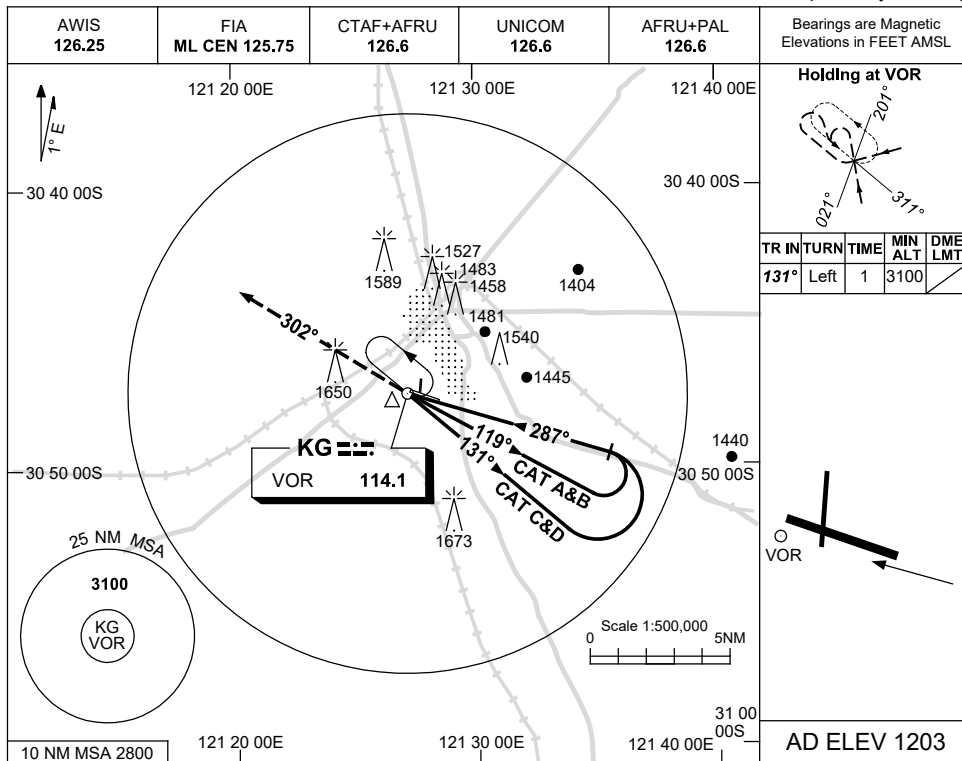
PKGVO06-179

USE QNH

VOR-Y RWY 29

KALGOORLIE-BOULDER, WA (YPKG)

13 JUN 2024



NOTES

CATEGORY	A	B	C	D
S-I VOR	1960 (813-4.6)			
CIRCLING	2060 (857-2.4)	2160 (957-4.0)	2190 (987-5.0)	
ALTERNATE	(1357-4.4)	(1457-6.0)		(1487-7.0)

1. MAX IAS:
INITIAL :
CAT C&D 210KT.
- CAUTION:**
1650FT RADIO MAST
2.5NM 280° KG
VOR/DME.

Changes: CAT A/B MAX SPEED REMOVED, MAGNETIC HEADING, COORD FORMAT, Editorial.

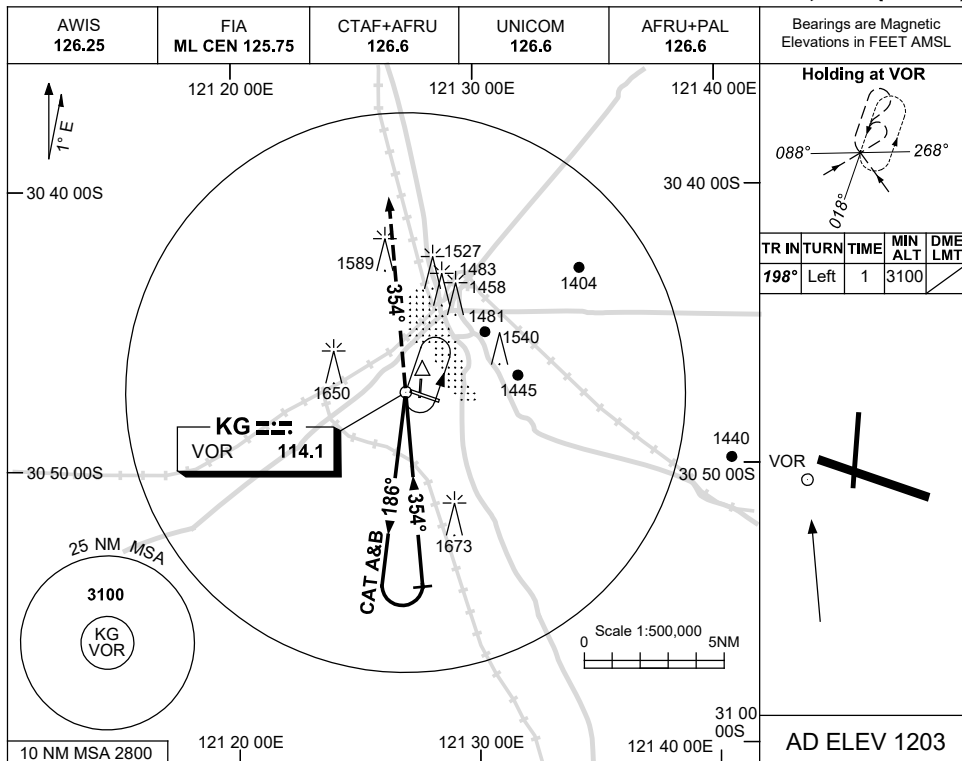
PKGVO07-179

USE QNH

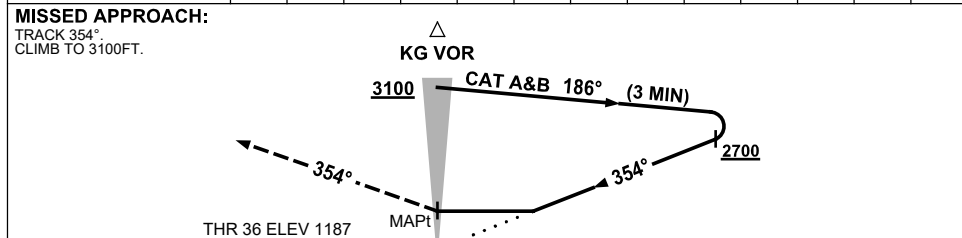
VOR-Y RWY 36

KALGOORLIE-BOULDER, WA (YPKG)

13 JUN 2024



DIST BY DME				
ALT	NOT APPLICABLE			



NOTES

CATEGORY	A	B	C	D
S-I VOR	2000 (813-4.6)		NOT APPLICABLE	
CIRCLING	2060 (857-2.4)			
ALTERNATE	(1357-4.4)			

CAUTION:
1650FT RADIO MAST
2.5NM 280° KG
VOR/DME.

Changes: NOTE 1 REMOVED, COORD FORMAT.

PKGVO08-179