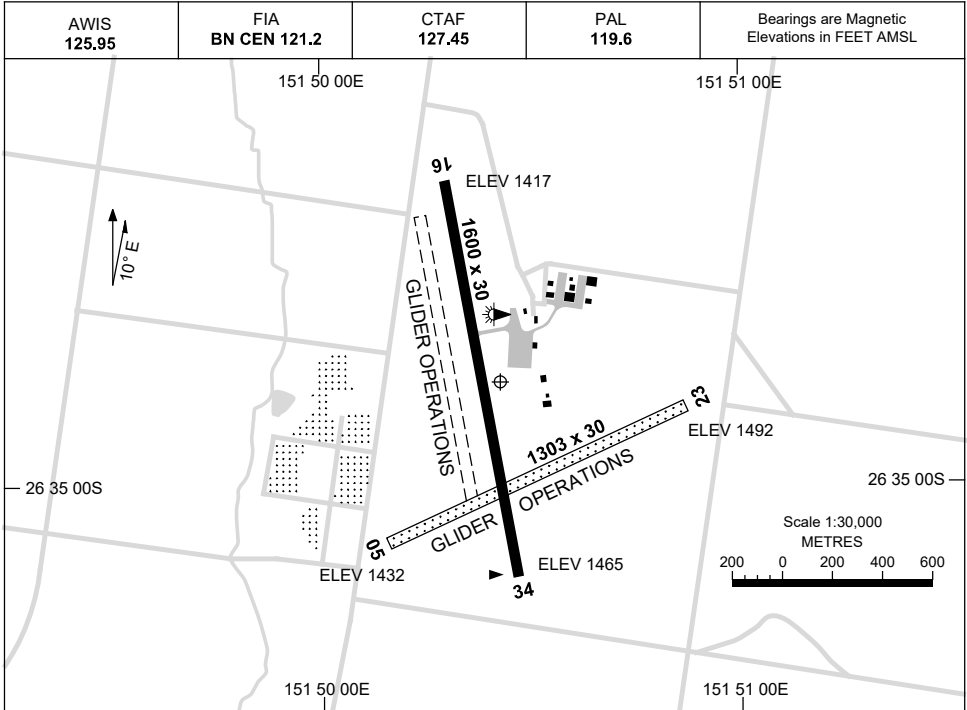


15 JUN 2023

AD ELEV 1492
26 34 51S 151 50 28E

AERODROME CHART
KINGAROY, QLD (YKRY)



	AERODROME LIGHTING	
RWY	TAXIWAY: BLUE EDGE RL : PAL 119.6 , PTBL EMERG ONLY , SDBY (PN)	
16 ¹⁵⁹ 339 34	LIRL	
05 ⁰⁵⁵ 235 23	NIL	

NOTES

1. PAL REQUIRES THREE TIMES ONE SECOND PULSES WI A 14-SEC PERIOD.

Changes: LIGHTING AND NOTES.

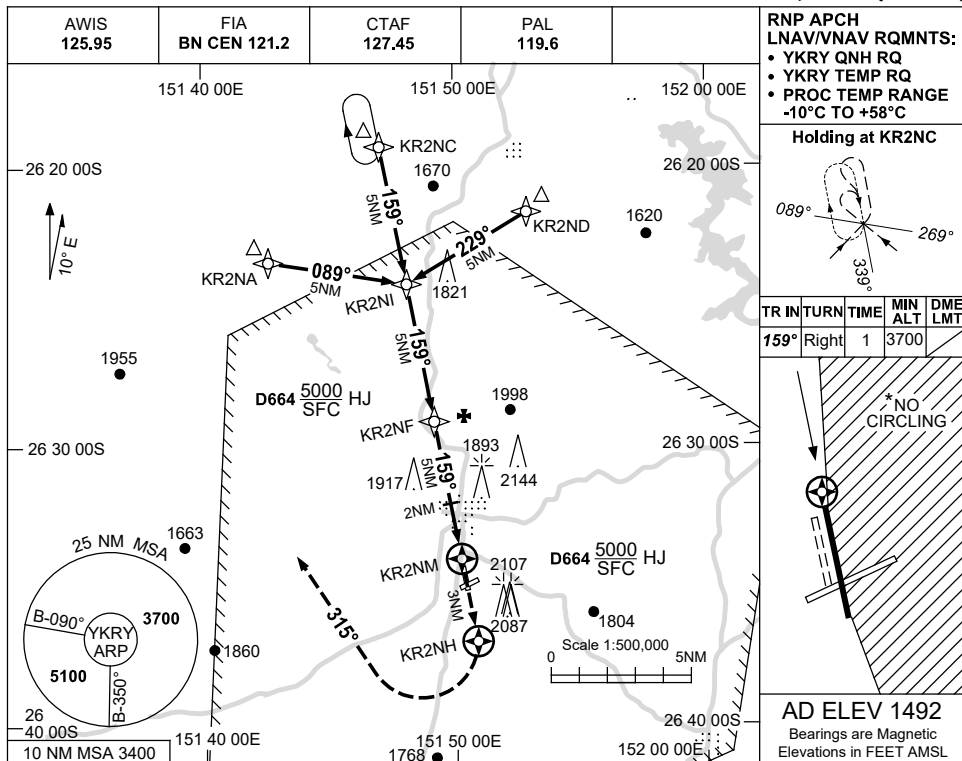
KRYAD01-175

USE QNH

RNP RWY 16

KINGAROY, QLD (YKRY)

13 JUN 2024



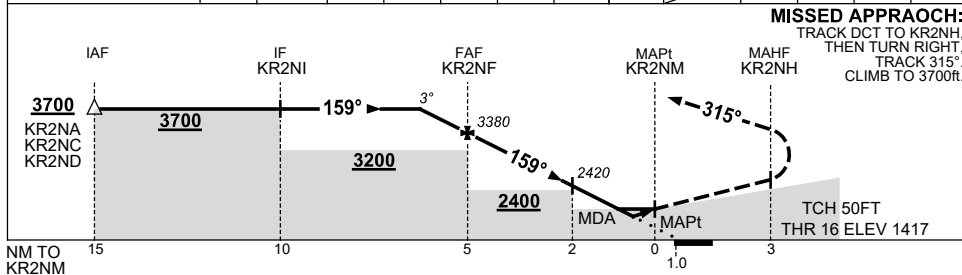
RNP APCH
LNAV/VNAV RQMNTS:
 • YKRY QNH RQ
 • YKRY TEMP RQ
 • PROC TEMP RANGE
 -10°C TO +58°C

Holding at KR2NC

TR	IN	TURN	TIME	MIN ALT	DME LMT
159°	Right		1	3700	

AD ELEV 1492
 Bearings are Magnetic
 Elevations in FEET AMSL

NM TO NEXT WPT	1	KR2NF	4	3	2	1	0.9	0.6	KR2NM
ALT (3° APCH PATH)	3700	3380	3060	2740	2420	2100	2060	1980	



NOTES

CATEGORY	A	B	C	D
LNAV/VNAV		1980 (563-3.2)		NOT APPLICABLE
LNAV		2060 (643-3.7)		
CIRCLING*	2260 (768-2.4)		2530 (1038-4.0)	
ALTERNATE	(1248-4.4)		(1538-6.0)	

- MAX IAS:
INITIAL : 210KT.
- NO CIRCLING IN SECTOR EAST OF RWY 16/34.

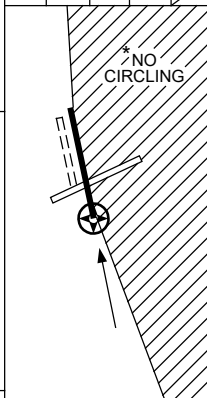
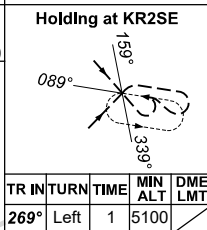
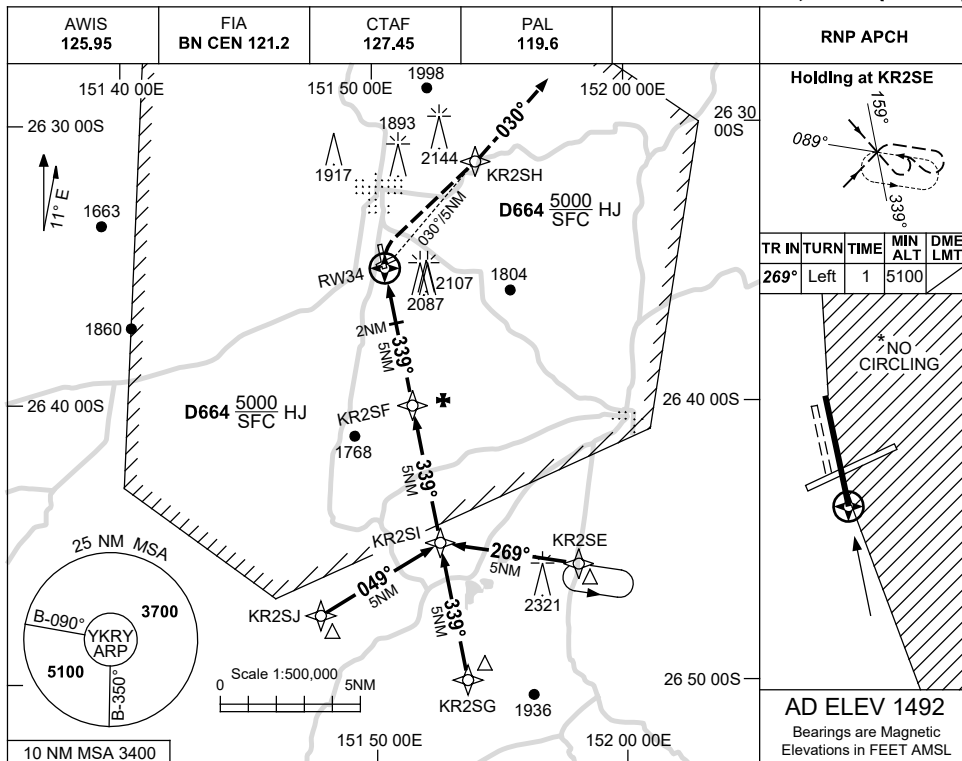
Changes: 2107FT OBST, CIRCLING & ALTN MINIMA, WPT NAMING CONVENTION, MNM ALT.

KRYGN01-179

USE QNH

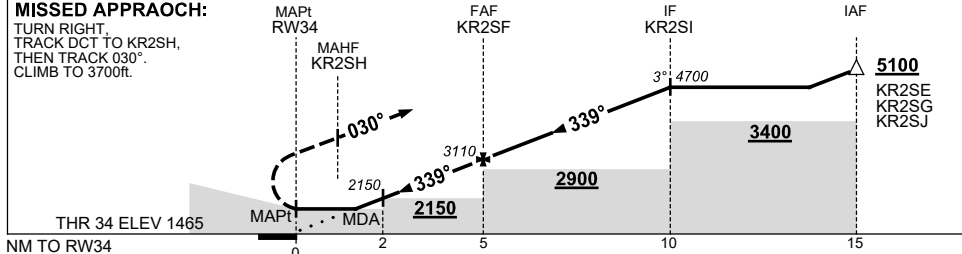
RNP RWY 34
KINGAROY, QLD (YKRY)

13 JUN 2024



AD ELEV 1492
Bearings are Magnetic
Elevations in FEET AMSL

NM TO NEXT WPT	RW34	1.9	2	3	4	KR2SF	1	2	3	4	KR2SI		
ALT (3° APCH PATH)		2110	2150	2470	2790	3110	3430	3740	4060	4380	4700		



NOTES

CATEGORY	A	B	C	D
LNAV	2110 (645-3.7)			NOT APPLICABLE
CIRCLING*	2260 (768-2.4)	2530 (1038-4.0)		
ALTERNATE	(1248-4.4)		(1538-6.0)	

- MAX IAS: INITIAL : 210KT.
- NO CIRCLING IN SECTOR EAST OF RWY 16/34.

Changes: 2107FT OBST, CIRCLING & ALTN MINIMA, WPT NAMING CONVENTION, Editorial.

KRYGN02-179