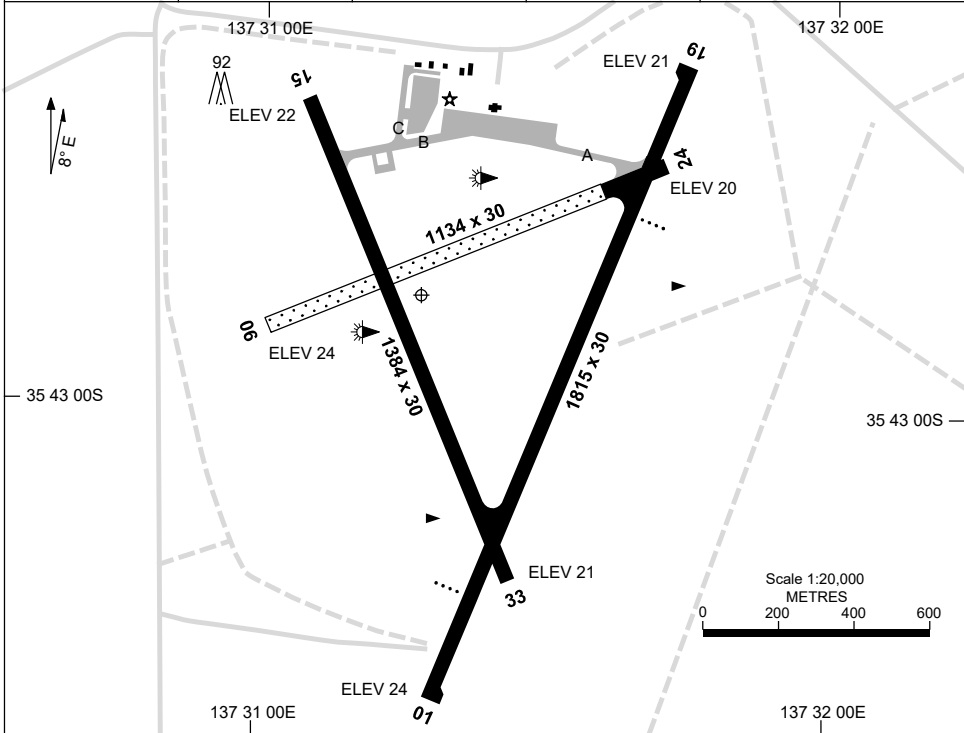


5 SEP 2024

AD ELEV 24  
35 42 50S 137 31 17E

**KINGSCOTE/KANGAROO ISLAND, SA (YKSC)**  
AERODROME CHART

AWIS 127.45	FIA ML CEN 123.05	CTAF+AFRU 126.0	PAL 122.3	Bearings are Magnetic Elevations in FEET AMSL
----------------	----------------------	--------------------	--------------	--



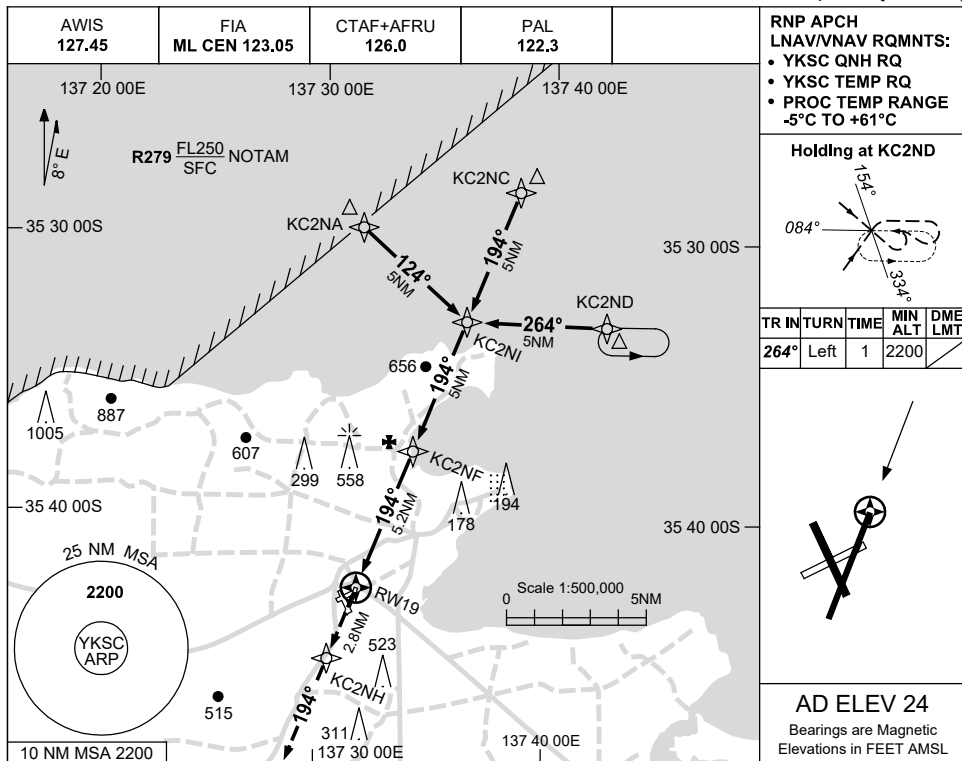
RWY		AERODROME LIGHTING
		ABN : FLG W 6 SEC TAXIWAYS : BLUE EDGE TWY A RL : PAL 122.3 , SDBY , PTBL IN EMERG
01 194	014 19	PAPI 3.0° 47FT LIRL PAPI 3.0° 47FT LIRL
06 239	059 24	NIL NIL
15 329	149 33	NIL NIL

**NOTES**

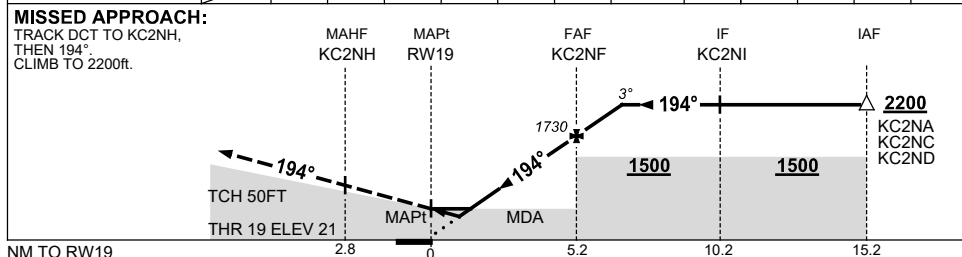
**USE QNH**  
**KINGSCOTE/KANGAROO ISLAND, SA (YKSC)**

RNP RWY 19

**5 SEP 2024**



NM TO NEXT WPT	RW19	0.8	1	1.7	2	3	4	KC2NF	1	1.5		
ALT (3° APCH PATH)		340	390	600	710	1030	1340	1730	2050	2200		



**NOTES**

CATEGORY	A	B	C	D
LNAV/VNAV	340 (319-1.8)			<b>NOT APPLICABLE</b>
LNAV	600 (576-3.3)			
CIRCLING	840 (816-2.4)		1070 (1046-4.0)	
ALTERNATE	(1316-4.4)		(1546-6.0)	

1. MAX IAS:  
INITIAL : 230KT.
2. KC2NA INITIAL  
NOT AVBL  
WHEN R279 ACT

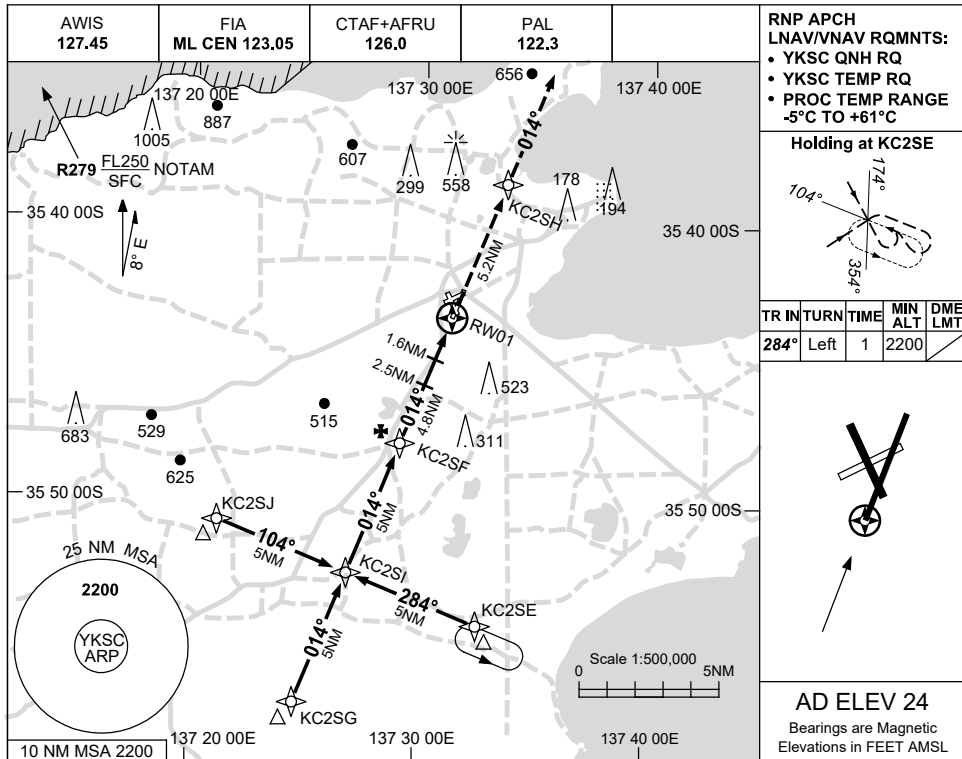
Changes: WPT NAMING CONVENTION, Editorial.

KSCGN01-180

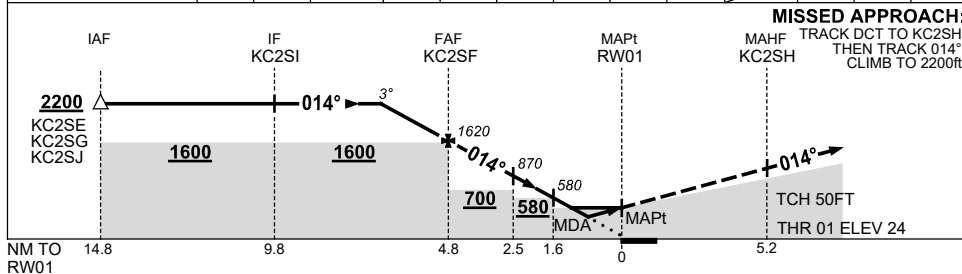
**USE QNH**  
**KINGSCOTE/KANGAROO ISLAND, SA (YKSC)**

RNP RWY 01

**5 SEP 2024**



NM TO NEXT WPT	1.9	1	KC2SF	4	3	2.5	1.6	1.4	0.8	RW01			
ALT (3° APCH PATH)	2200	1930	1620	1350	1030	870	580	530	340				



**NOTES**

- MAX IAS: INITIAL : 210KT.

CATEGORY	A	B	C	D
LNAV/VNAV		340 (316-1.8)		NOT APPLICABLE
LNAV		530 (506-2.9)		
CIRCLING	840 (816-2.4)		1070 (1046-4.0)	
ALTERNATE		(1316-4.4)	(1546-6.0)	

Changes: 2.5NM STEP-DOWN FIX, WPT NAMING CONVENTION, Editorial.

KSCGN02-180