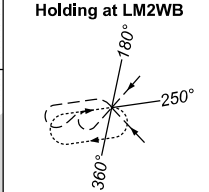
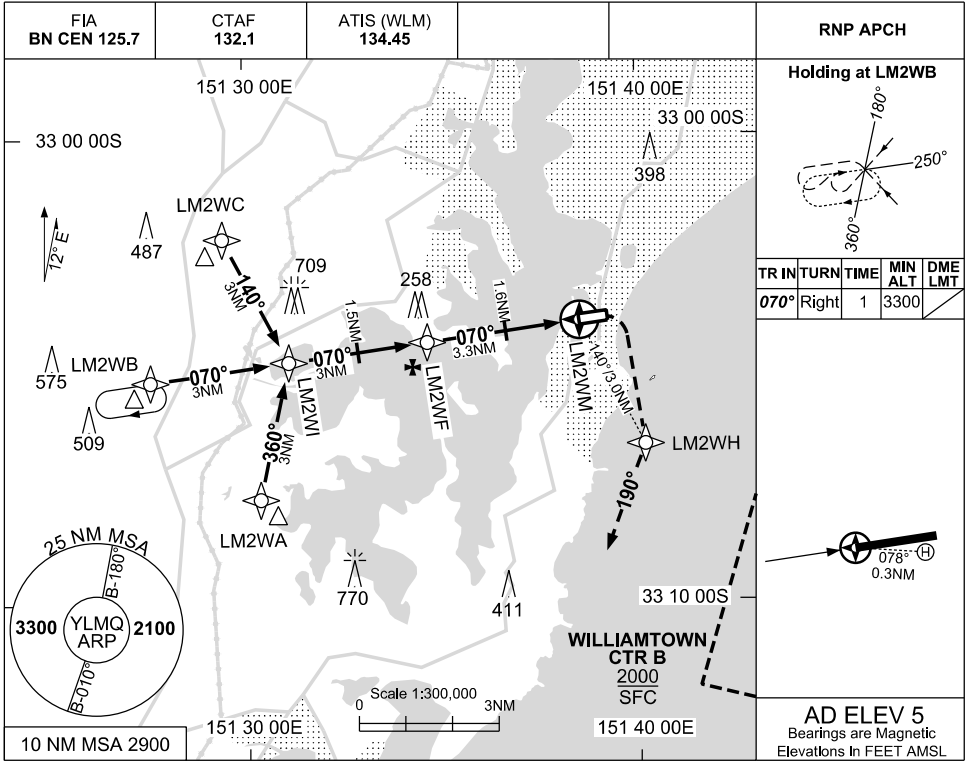


FOR CASA APPROVED OPERATORS ONLY

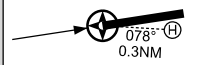
USE QNH  
LAKE MACQUARIE AIRPORT, NSW (YLMQ)

RNP 070

30 NOV 2023

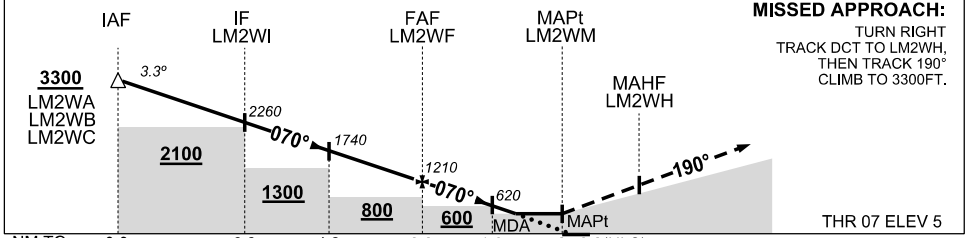


TR IN	TURN	TIME	MIN ALT	DME LMT
070°	Right	1	3300	



**AD ELEV 5**  
Bearings are Magnetic  
Elevations In FEET AMSL

NM TO NEXT WPT	IAF	2	1	LM2WI	2	1	LM2WF	2	1.4	LM2WM
ALT (3.3° APCH PATH)	3300	2960	2610	2260	1910	1560	1210	760	540	



**MISSED APPROACH:**  
TURN RIGHT  
TRACK DCT TO LM2WH,  
THEN TRACK 190°  
CLIMB TO 3300FT.

**NOTES**

- HLS ELEV 4FT
- CIRCLING AREA PROVIDED WITHIN 2.66NM OF RWY 07/25 THR. MAX IAS: 135KT

CATEGORY	H
LNAV (VAA) USING WLM QNH	540 (535-3.0)
LNAV (VAA)	570 (565-3.2)
CIRCLING*	810 (805-2.4)
ALTERNATE	(1305-4.4)

Changes: WPT IDENT, R578B REMOVED, NOTE 2 REMOVED, EDITORIAL.

LMQGN01-177