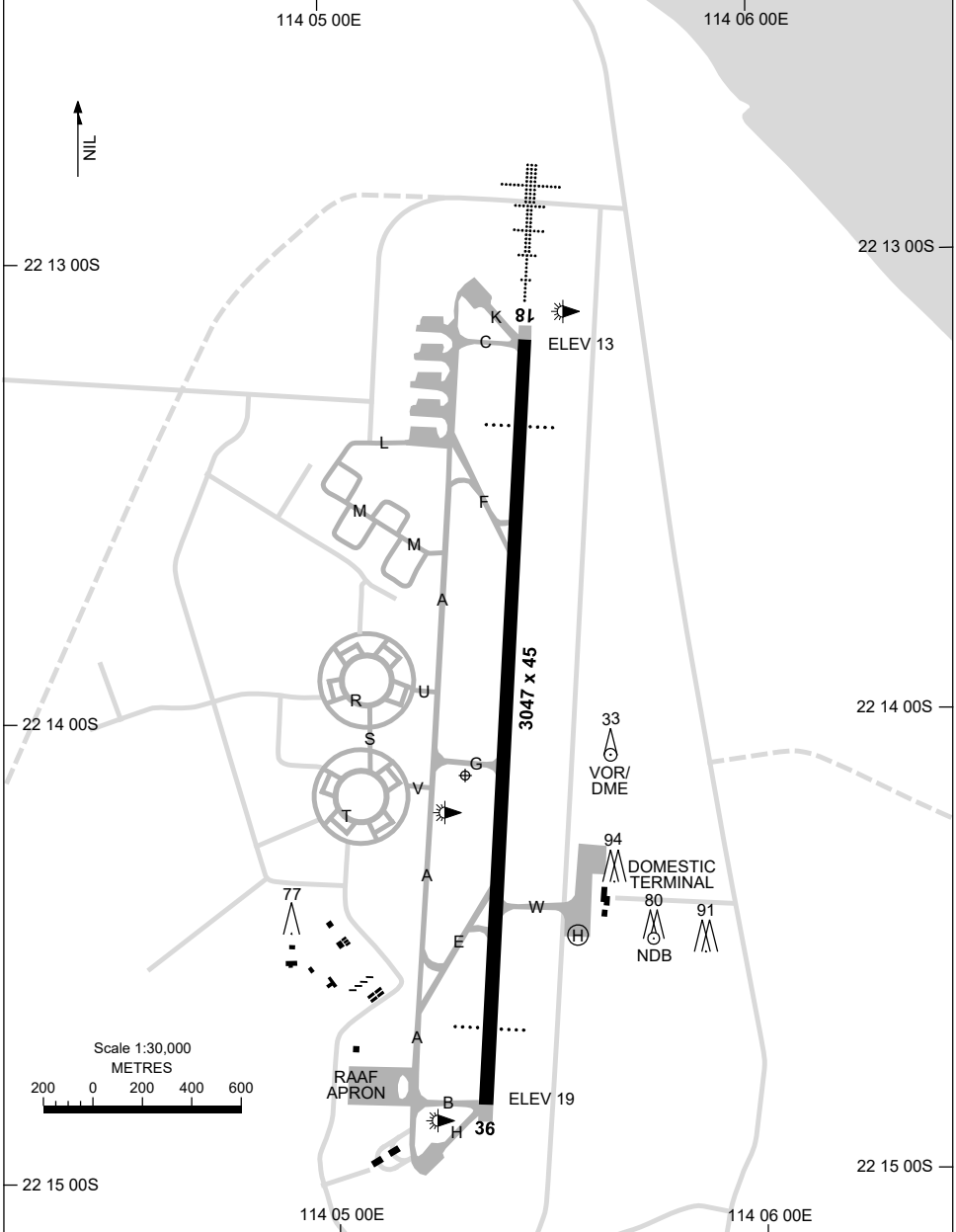


24 MAR 2022

AD ELEV 19  
22 14 08S 114 05 19E

AERODROME CHART - Page 1  
**LEARMONTH, WA (YPLM)**

FIA ML CEN 125.9	APP 120.5 261.4	TWR 118.3 257.8	SMC 259.3	CTAF+AFRU 118.3	AFRU+PAL 118.3	Bearings are Magnetic Elevations in FEET AMSL
---------------------	--------------------	--------------------	--------------	--------------------	-------------------	--------------------------------------------------



Changes: TWY LABELS.

PLMAD01-170

15 JUN 2023

AD ELEV 19  
22 14 08S 114 05 19E

AERODROME CHART - Page 2  
**LEARMONTH, WA (YPLM)**

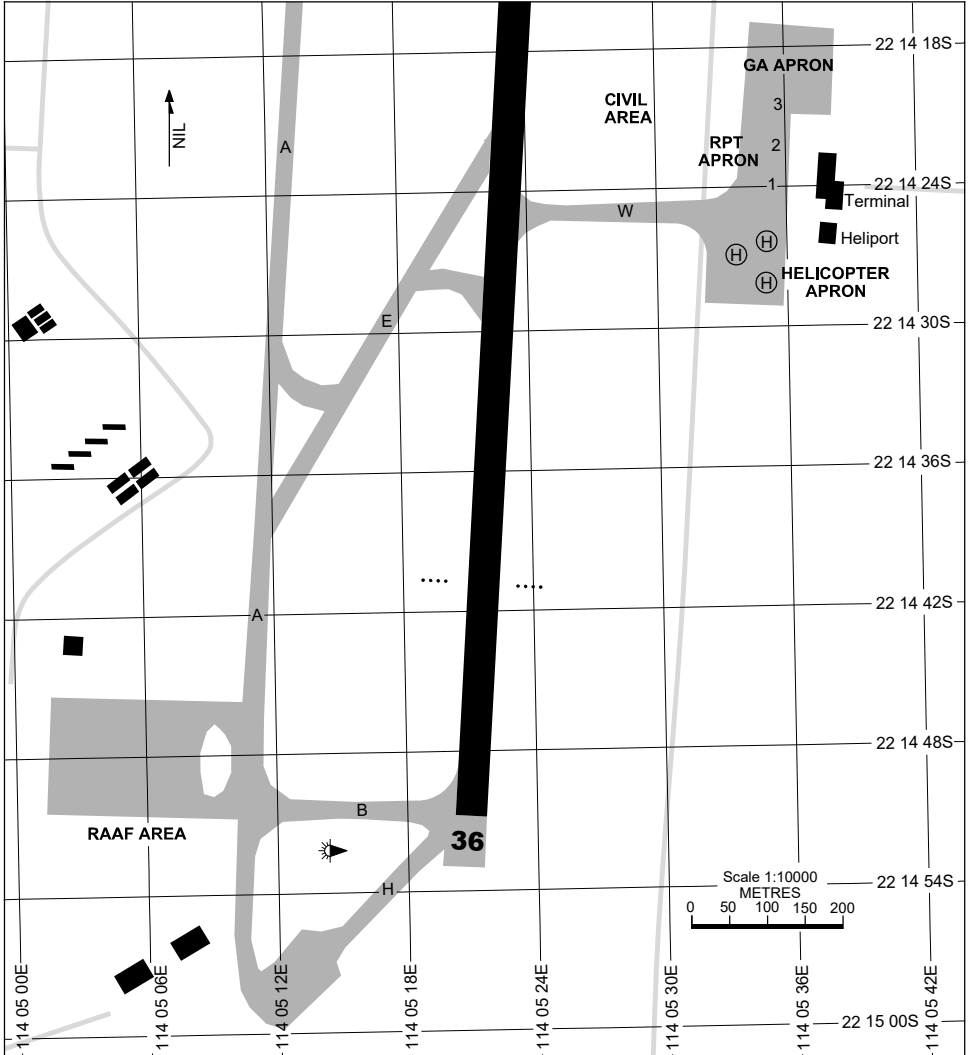
FIA ML CEN	125.9	APP 120.5 261.4	TWR 118.3 257.8	SMC 259.3	CTAF+AFRU 118.3	AFRU+PAL 118.3*	Bearings are Magnetic Elevations in FEET AMSL
<b>RWY</b>	<b>AERODROME LIGHTING</b>						
	TAXIWAY : GREEN CENTRELINE RL : AFRU+PAL 118.3*, SDBY (ARO : 08 9949 1326 , AH 0407 494 419)						
<b>18</b> <i>184</i> <b>004 36</b>	PAPI 3.0° 50FT HIRL HIAL - CAT I PAPI 3.0° 50FT HIRL						
<b>NOTES</b>							
<ul style="list-style-type: none"> <li>* 1. LIGHTING CIVIL OPS RQ 60 MIN PN WITH REPORTING AGENT.</li> <li>2. AWIS (PHONE) 08 6216 2623</li> </ul>							

Changes: NOTES.

PLMAD02-175

30 NOV 2023

APRON CHART  
LEARMONTH, WA (YPLM)



PARKING POSITION INFORMATION

STAND	CO-ORDINATES	ELEV (ft)	CAPACITY	HYDRANT FUEL
1	22 14 23.88S 114 05 36.17E	15	A320	JET A1
2	22 14 22.14S 114 05 36.49E	15	B712	JET A1
3	22 14 20.03S 114 05 36.64E	15	A320	JET A1

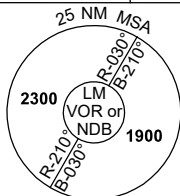
Changes: HELIPAD AND APN, Editorial.

PLMAP01-177

# DME or GNSS ARRIVAL PROCEDURES LEARMONTH, WA (YPLM)

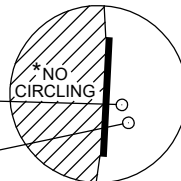
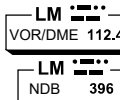
5 SEP 2024

FIA	APP	TWR	SMC	CTAF+AFRU	AFRU+PAL	Bearings are Magnetic Elevations in FEET AMSL
ML CEN 125.9	120.5 261.4	118.3 257.8	259.3	118.3	118.3	



### DME USING LM DME REFERENCE WAYPOINT LM VOR

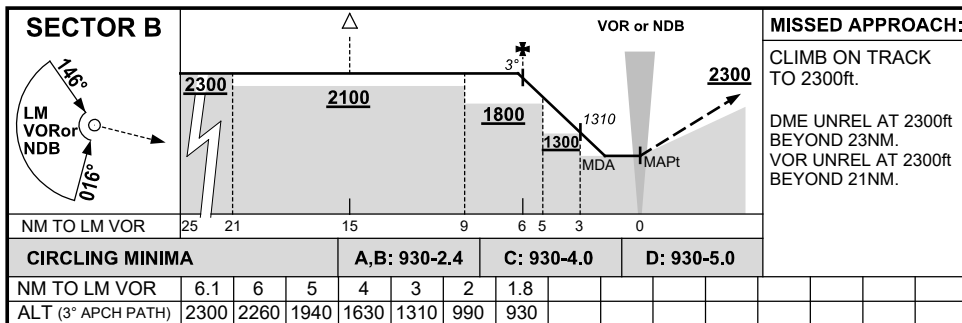
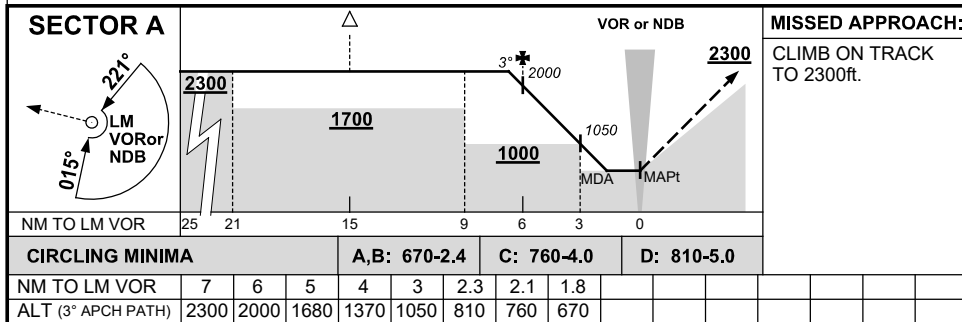
AWIS (PHONE) 08 6216 2623



\* NO CIRCLING WEST OF RWY 18/36.

AD ELEV 19

10 NM MSA 2300



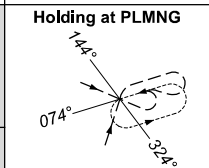
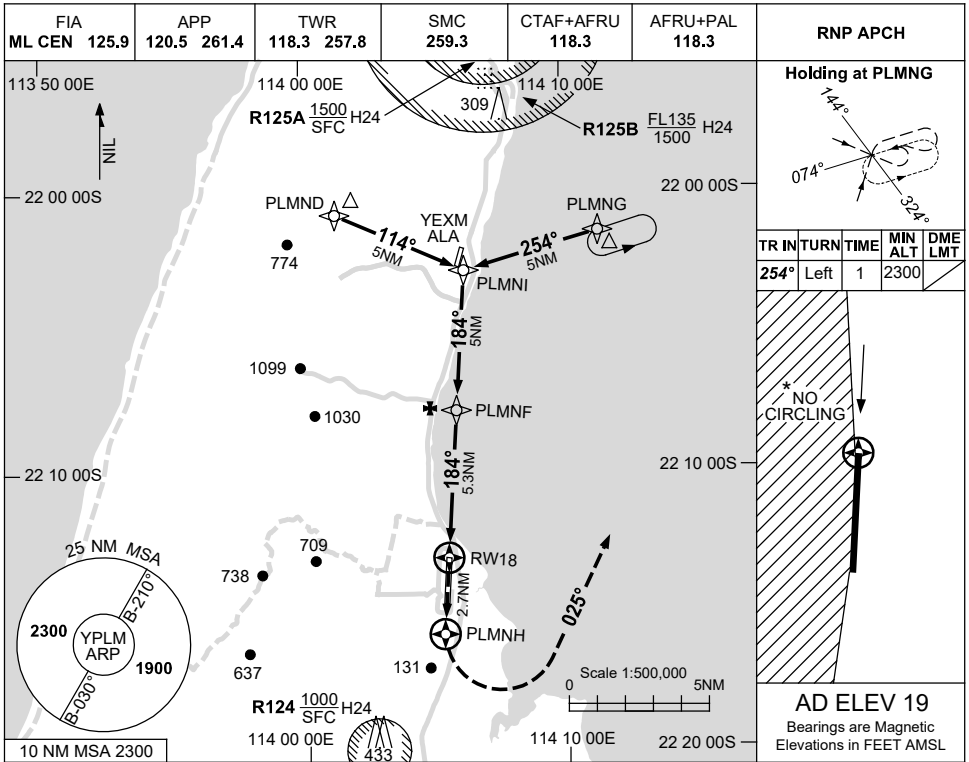
Changes: FROM SUP H62/24.

PLMDG01-180

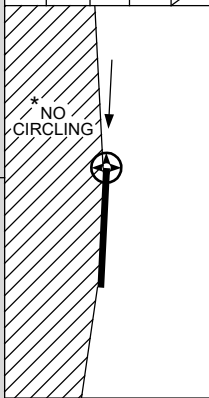
USE QNH

RNP RWY 18  
LEARMONTH, WA (YPLM)

5 SEP 2024

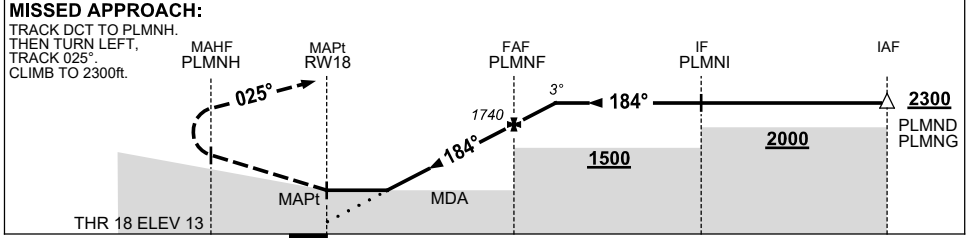


TR	IN	TURN	TIME	MIN ALT	DME LMT
254°	Left	1		2300	



**AD ELEV 19**  
Bearings are Magnetic  
Elevations in FEET AMSL

NM TO NEXT WPT	RW18	1.5	2	3	4	PLMNF	1	1.8				
ALT (3° APCH PATH)		550	700	1020	1340	1740	2060	2300				



- NOTES**
- MAX IAS:  
INITIAL : 210KT.  
HOLDING : 200KT.
  - NO CIRCLING WEST OF RWY 18/36.
  - AWIS (PHONE)  
08 6216 2623
  - R125 A/B LOCATED 005°MAG/20.7NM REF YPLM ARP

CATEGORY	A	B	C	D
LNAV	550 (531-2.1)			
CIRCLING*	660 (641-2.4)	760 (741-4.0)	810 (791-5.0)	
ALTERNATE	(1141-4.4)	(1241-6.0)	(1291-7.0)	

Changes: FROM SUP H62/24.

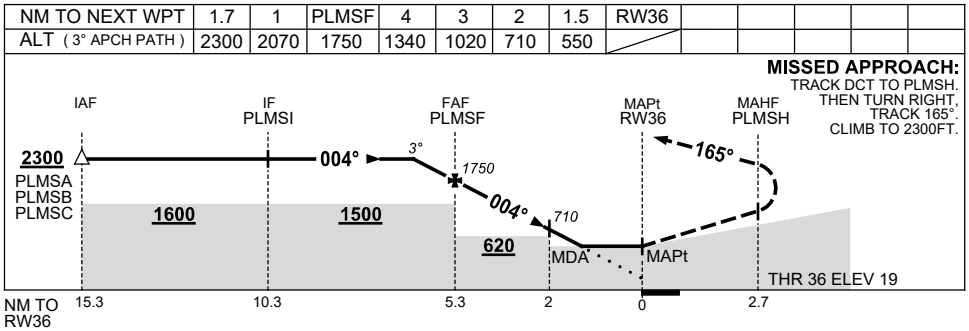
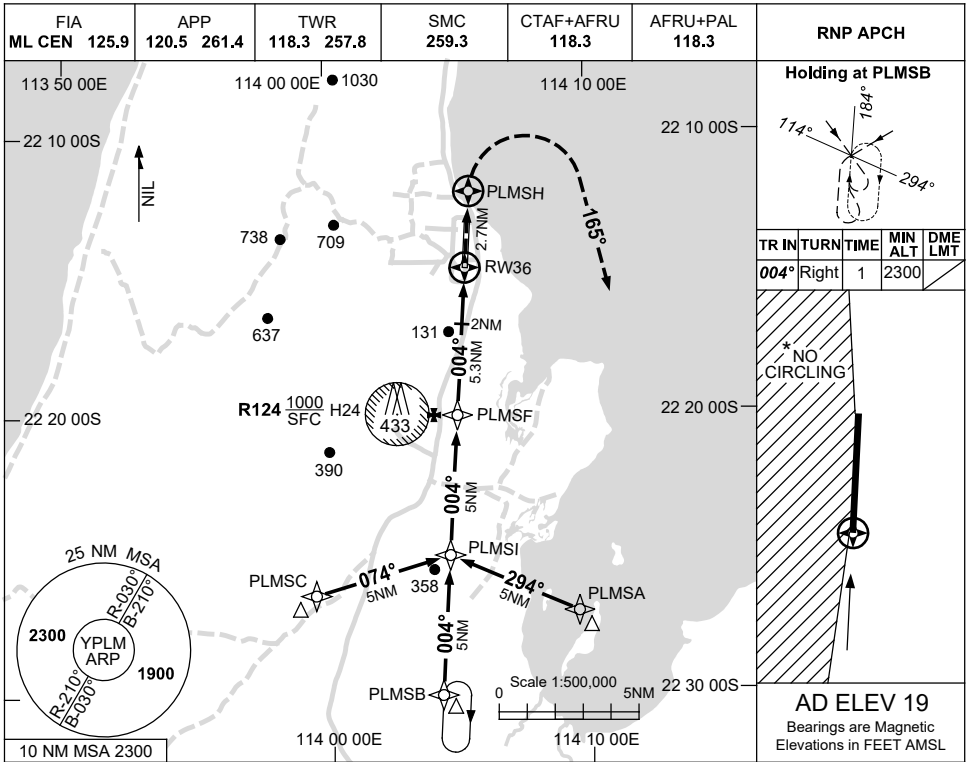
PLMGN01-180

USE QNH

RNP RWY 36

30 NOV 2023

LEARMONTH, WA (YPLM)



**MISSED APPROACH:**  
 TRACK DCT TO PLMSH.  
 THEN TURN RIGHT,  
 TRACK 165°.  
 CLIMB TO 2300FT.

**NOTES**

CATEGORY	A	B	C	D
LNAV	550 (531-3.0)			
CIRCLING*	660 (641-2.4)	760 (741-4.0)	810 (791-5.0)	
ALTERNATE	(1141-4.4)	(1241-6.0)	(1291-7.0)	

- MAX IAS:  
INITIAL : 210KT.
- NO CIRCLING WEST OF RWY 18/36.
- AWIS (PHONE)  
08 6216 2623

Changes: CHART TITLE, PBN SPECIFICATION BOX, Editorial.

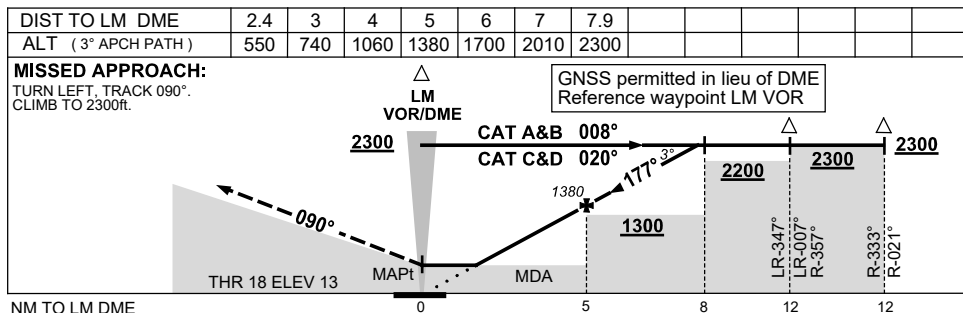
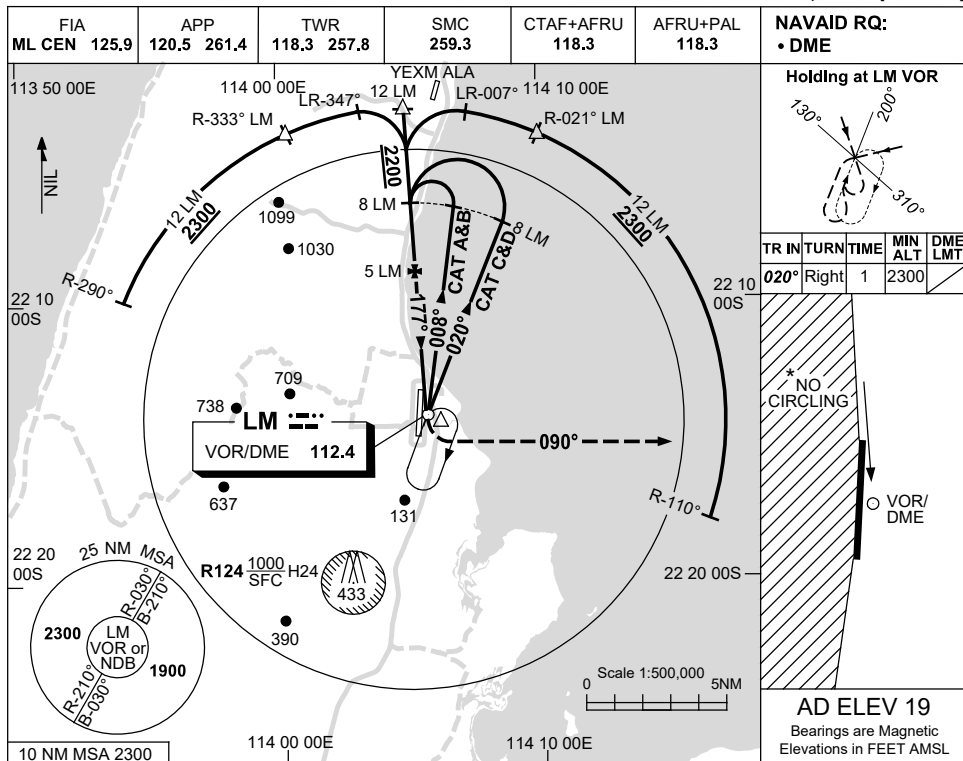
PLMGN02-177



USE QNH

VOR RWY 18  
LEARMONTH, WA (YPLM)

21 MAR 2024



CATEGORY	A	B	C	D
S-I VOR/DME	550 (531-3.0)			
CIRCLING *	660 (641-2.4)	760 (741-4.0)	810 (791-5.0)	
ALTERNATE	(1141-4.4)	(1241-6.0)	(1291-7.0)	

**NOTES**

- MAX IAS:  
INITIAL : 210KT.  
HOLDING : 210KT.
- \* NO CIRCLING WEST OF RWY 18/36.
- AWIS (PHONE)  
08 6216 2623

Changes: YEXM ALA, Editorial.

PLMVO01-178



