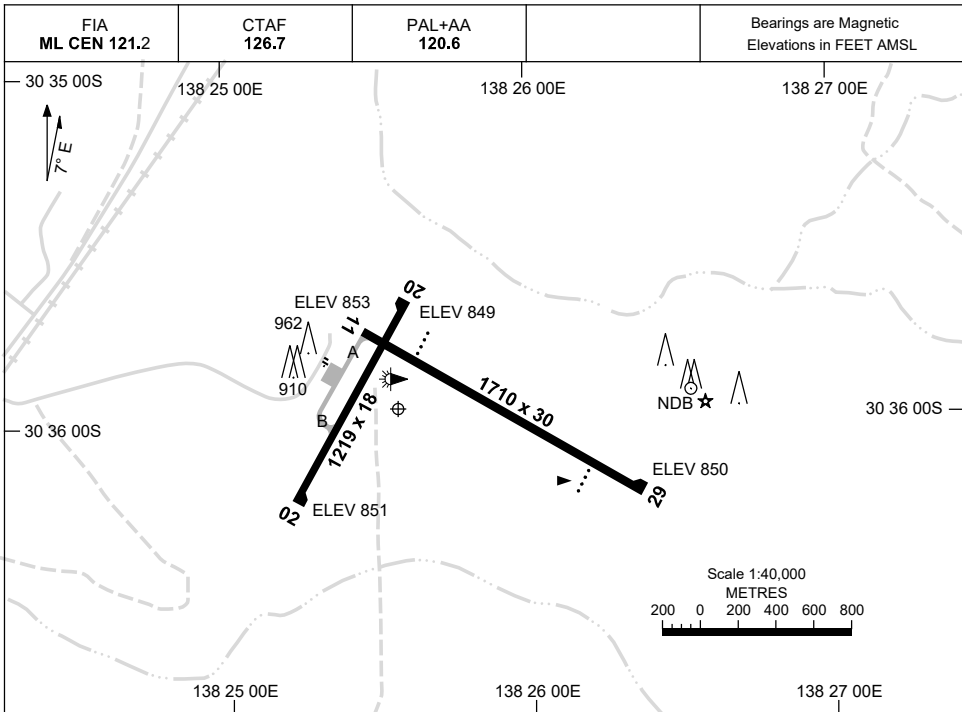


8 SEP 2022

AD ELEV 856
30 35 54S 138 25 33E

AERODROME CHART
LEIGH CREEK, SA (YLEC)



AERODROME LIGHTING	
RWY	ABN : FLG W 6 SEC TAXIWAY : BLUE EDGE TWY A RL : PAL+AA 120.6 , SDBY
11 <small>114</small>	PAPI 3.0° 42FT LIRL
<small>294</small> 29	PAPI 3.0° 42FT LIRL
02 <small>023</small>	NIL
<small>203</small> 20	NIL

NOTES

1. AWIS (PHONE) 08 8150 3807

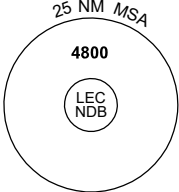
Changes: PTBL LIGHTING REMOVED, NOTES.

LECAD01-172

**GNSS ARRIVAL PROCEDURES
LEIGH CREEK, SA (YLEC)**

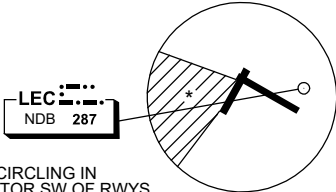
16 JUN 2022

FIA ML CEN 121.2	CTAF 126.7	PAL+AA 120.6		Bearings are Magnetic Elevations in FEET AMSL
---------------------	---------------	-----------------	--	--



25 NM MSA
4800
LEC NDB

REFERENCE WAYPOINT LEC NDB
AWIS (PHONE) 08 8150 3807



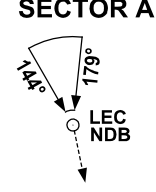
LEC NDB
NDB 287

* NO CIRCLING IN SECTOR SW OF RWYS 02/20 AND 11/29.

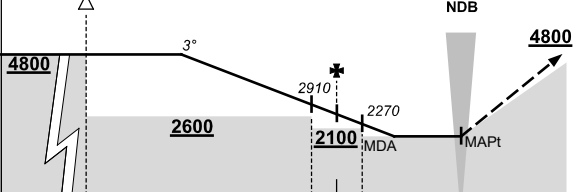
10 NM MSA 3500

AD ELEV 856

SECTOR A



LEC NDB

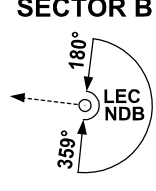


NDB

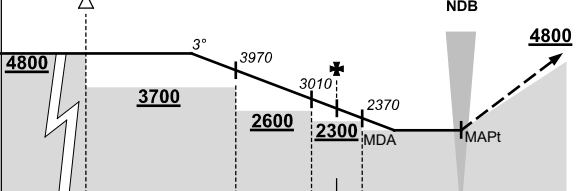
MISSED APPROACH:
CLIMB ON TRACK TO 4800FT.

NM TO LEC NDB	25	15	6	5	4	0					
CIRCLING MINIMA	A,B: 1770-2.4		C: 1930-4.0		D: N/A						
NM TO LEC NDB	12	11	10	9	8	7	6	5	4	3	2.4
ALT (3° APCH PATH)	4800	4500	4180	3860	3540	3220	2910	2590	2270	1950	1770

SECTOR B



LEC NDB

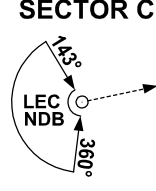


NDB

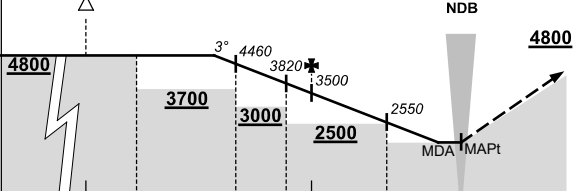
MISSED APPROACH:
CLIMB ON TRACK TO 4800FT.

NM TO LEC NDB	25	15	9	6	5	4	0				
CIRCLING MINIMA	A,B: 1830-2.4		C: 1930-4.0		D: N/A						
NM TO LEC NDB	11.6	11	10	9	8	7	6	5	4	3	2.3
ALT (3° APCH PATH)	4800	4600	4280	3970	3650	3330	3010	2690	2370	2050	1830

SECTOR C



LEC NDB



NDB

MISSED APPROACH:
CLIMB ON TRACK TO 4800FT.

NM TO LEC NDB	25	15	13	9	7	6	3	0		
CIRCLING MINIMA	A,B: 1960-2.4		C: 1960-4.0		D: N/A					
NM TO LEC NDB	10.1	10	9	8	7	6	5	4	3	1.2
ALT (3° APCH PATH)	4800	4780	4460	4140	3820	3500	3190	2870	2550	1960

Changes: PAL+AA

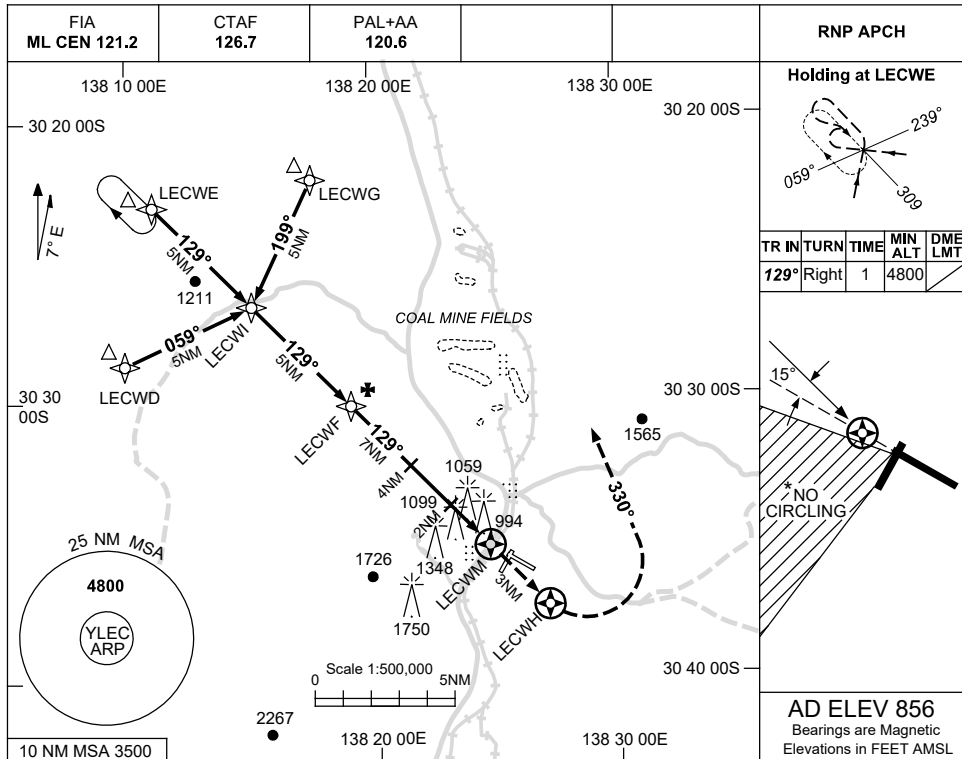
LECDG01-171

USE QNH

RNP RWY 11

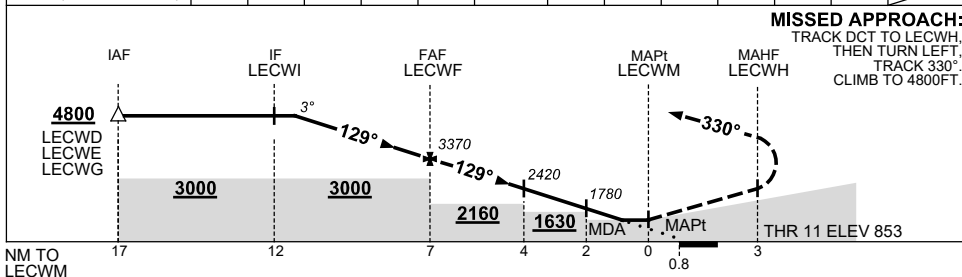
1 DEC 2022

LEIGH CREEK, SA (YLEC)



AD ELEV 856
Bearings are Magnetic
Elevations in FEET AMSL

NM TO NEXT WPT	4.5	4	3	2	1	LECWF	6	5	4	3	2	1.4	LECWM
ALT (3° APCH PATH)	4800	4640	4330	4010	3690	3370	3050	2740	2420	2100	1780	1580	



MISSED APPROACH:
TRACK DCT TO LECWH,
THEN TURN LEFT,
TRACK 330°,
CLIMB TO 4800FT.

NOTES

CATEGORY	A	B	C	D
LNAV	1580 (724-4.1)			NOT APPLICABLE
CIRCLING *	1760 (904-2.4)		1930 (1074-4.0)	
ALTERNATE	(1404-4.4)		(1574-6.0)	

- MAX IAS: INITIAL : 210KT.
- NO CIRCLING IN SECTOR SW OF RWYS 02/20 AND 11/29.
- AWIS (PHONE) 08 8150 3807

Changes: CHART TITLE, PBN SPECIFICATION BOX.

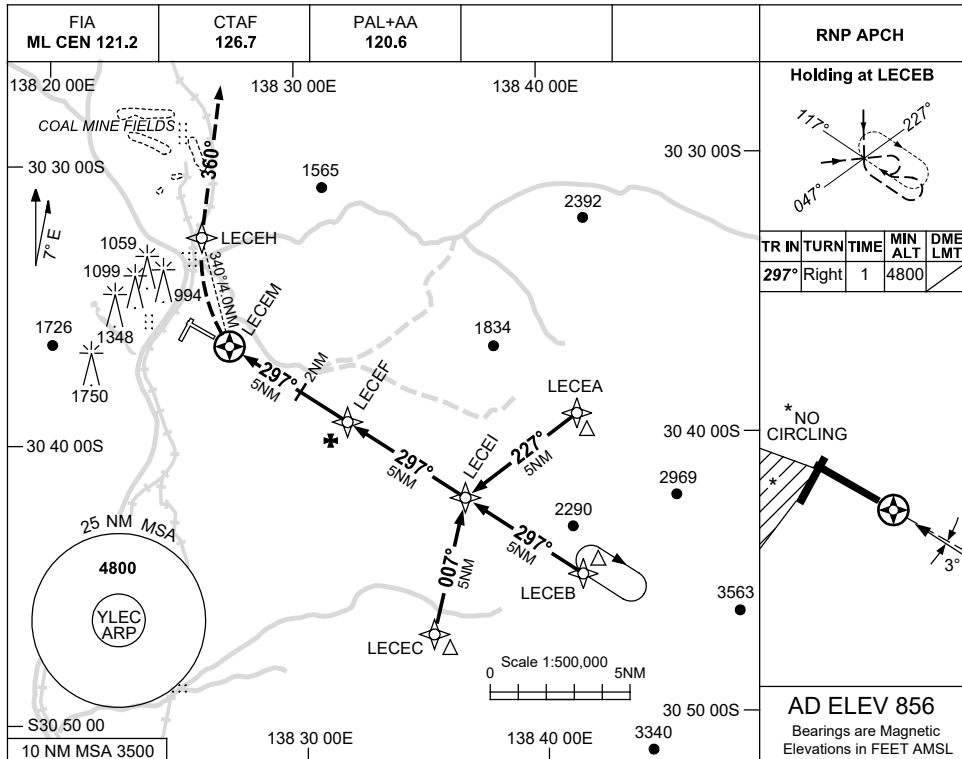
LECGN01-173

USE QNH

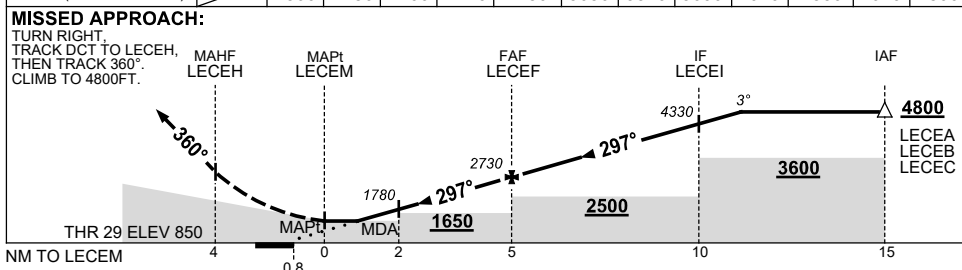
RNP RWY 29

LEIGH CREEK, SA (YLEC)

1 DEC 2022



NM TO NEXT WPT	LECEM	1.3	2	3	4	LECEI	1	2	3	4	LECEI	1	1.5
ALT (3° APCH PATH)		1560	1780	2100	2410	2730	3050	3370	3690	4010	4330	4640	4800



NOTES

CATEGORY	A	B	C	D
LNAV	1560 (704-4.0)			NOT APPLICABLE
CIRCLING *	1760 (904-2.4)	1930 (1074-4.0)		
ALTERNATE	(1404-4.4)	(1574-6.0)		

- MAX IAS: INITIAL : 210KT.
- NO CIRCLING IN SECTOR SW OF RWYS 02/20 AND 11/29.
- AWIS (PHONE) 08 8150 3807

Changes: CHART TITLE, PBN SPECIFICATION BOX.

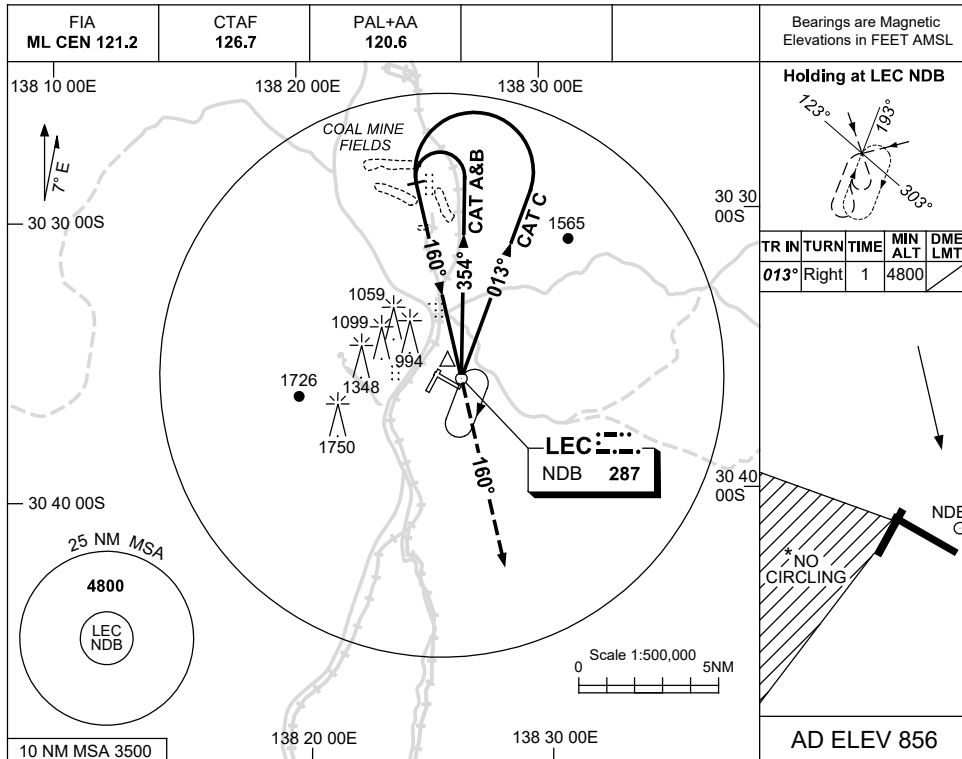
LECGN02-173

USE QNH

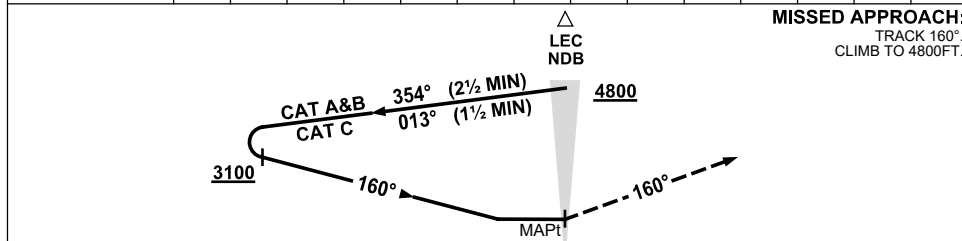
NDB-A

16 JUN 2022

LEIGH CREEK, SA (YLEC)



DME DIST	NOT APPLICABLE							
ALT								



NOTES

CATEGORY	A	B	C	D
CIRCLING*	1760 (904-2.4)	1930 (1074-4.0)	NOT APPLICABLE	
ALTERNATE	(1404-4.4)	(1574-6.0)		

1. MAX IAS:
INITIAL :
CAT C 210KT.
- * 2. NO CIRCLING IN SECTOR SW OF RWYS 02/20 AND 11/29.
3. AWIS (PHONE)
08 8150 3807

Changes: PAL+AA.

LECNB01-171