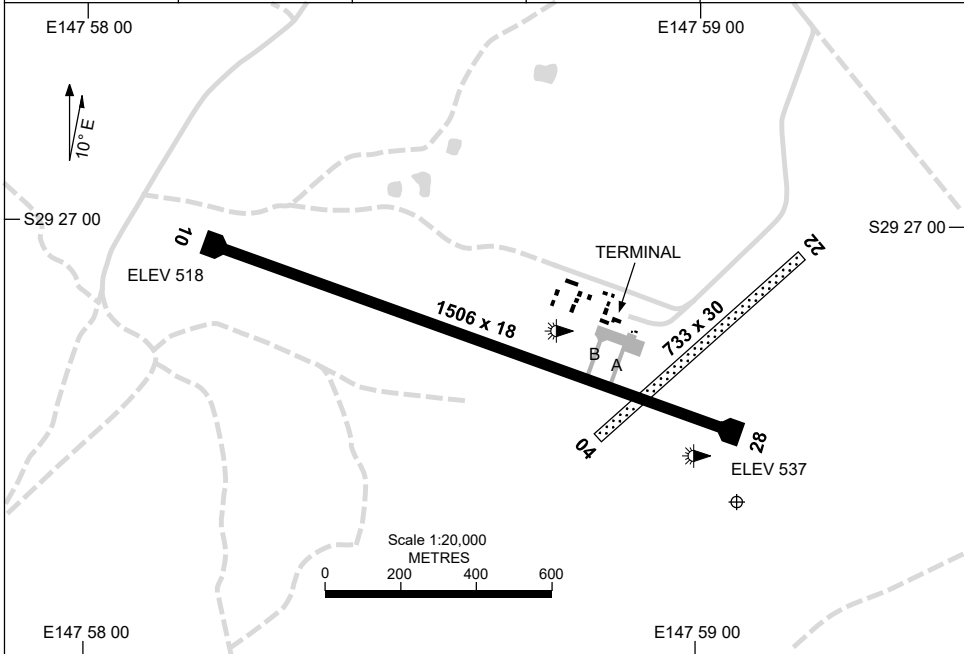


5 SEP 2024

AD ELEV 540  
S29 27 24 E147 59 04

AERODROME CHART  
**LIGHTNING RIDGE, NSW (YLRD)**

FIA BN CEN 127.1	CTAF 126.7	PAL+AA 121.3		Bearings are Magnetic Elevations in FEET AMSL
---------------------	---------------	-----------------	--	--



RWY		AERODROME LIGHTING
		TAXIWAY : BLUE EDGE RL : PAL+AA 121.3 , PTBL (ARO: 0417 691 740)
<b>10</b> <sup>099</sup>	LIRL	
<b>279 28</b>	LIRL	
<b>04</b> <sup>037</sup>	NIL	
<b>217 22</b>	NIL	

**NOTES**

1. FIA FREQ 127.1 AVBL AT 3000FT.

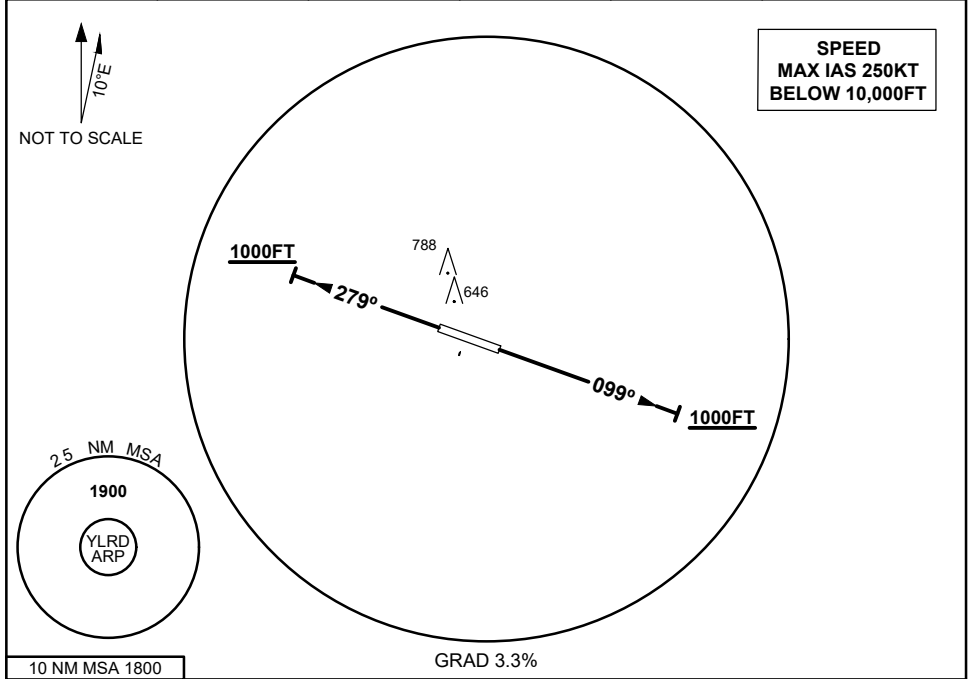
Changes: SDBY REMOVED, TWY, Editorial.

LRDAD01-180

**STANDARD INSTRUMENT DEPARTURES (SID)  
LIGHTNING RIDGE ONE DEPARTURE  
LIGHTNING RIDGE, NSW (YLRD)**

**16 JUN 2022**

FIA <b>BN CEN 127.1</b>	CTAF <b>126.7</b>	PAL + AA <b>121.3</b>			Bearings are Magnetic Elevations in FEET AMSL
----------------------------	----------------------	--------------------------	--	--	--



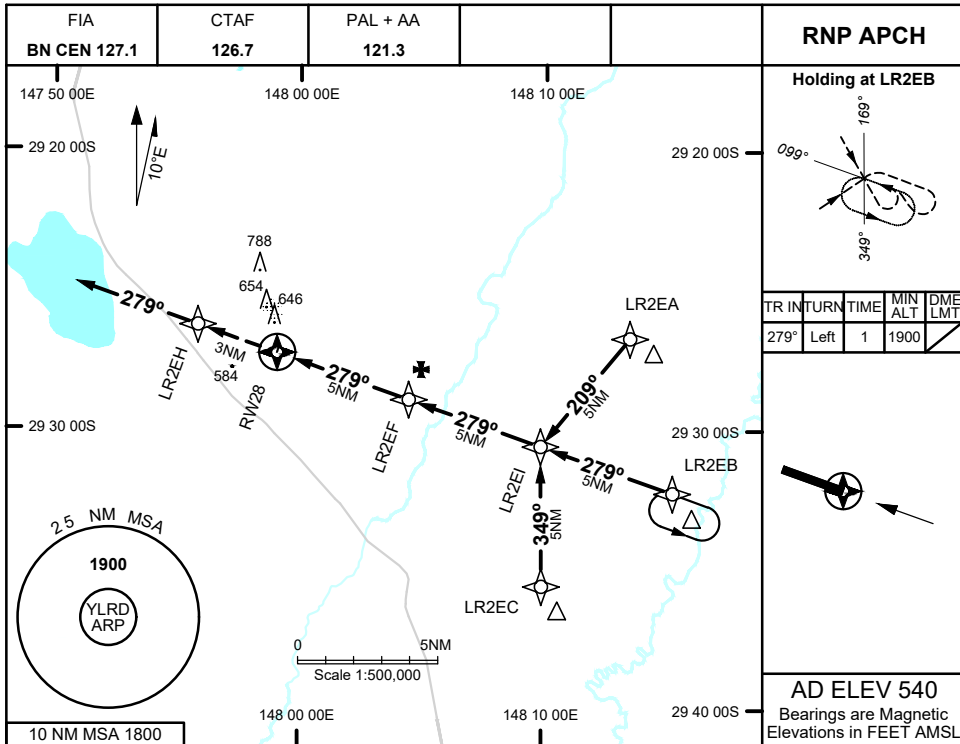
<p><b>LIGHTNING RIDGE ONE DEPARTURE</b></p> <p><b>RWY 10</b></p> <ul style="list-style-type: none"> <li>• Track 099°</li> <li>• AT or ABV 1000FT turn as required</li> <li>• Continue climb to 1900FT</li> <li>• Intercept flight plan route</li> </ul>	<p><b>RWY 28</b></p> <ul style="list-style-type: none"> <li>• Track 279°</li> <li>• AT or ABV 1000FT turn as required</li> <li>• Continue climb to 1900FT</li> <li>• Intercept flight plan route</li> </ul>
---	---

Changes: PAL+AA, Editorial

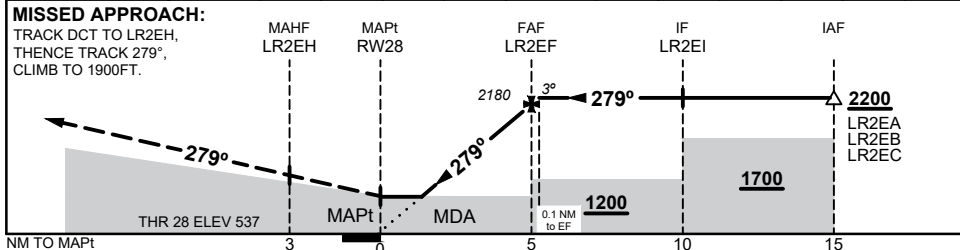
LRDDP01-171

16 JUN 2022

**LIGHTNING RIDGE, NSW (YLRD)**



NM TO NEXT WPT	RW28	1.3	2	3	4	LR2EF	0.1						
ALT (3° APCH PATH)		990	1220	1540	1860	2180	2200						



**NOTES**

- MAX IAS:  
INITIAL : 210KTS

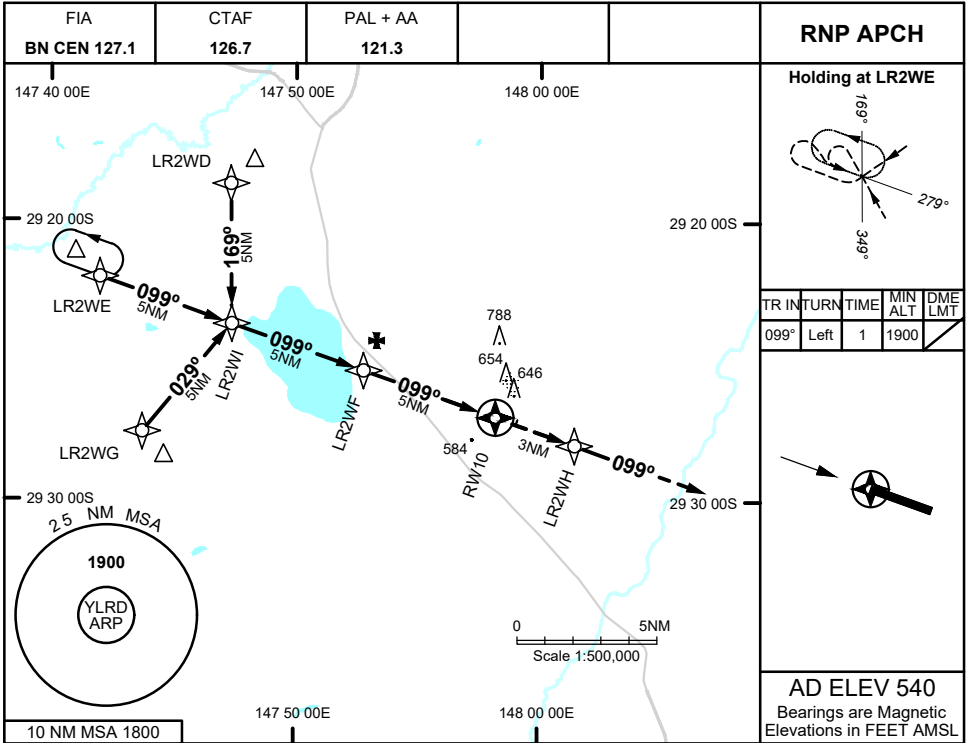
CATEGORY	A	B	C	D
LNAV	<b>990</b> (450 - 2.5)			NOT APPLICABLE
CIRCLING	<b>1110</b> (570 - 2.4)		<b>1290</b> (750 - 4.0)	
ALTERNATE	(1070 - 4.4)		(1250 - 6.0)	

Changes: PAL+AA

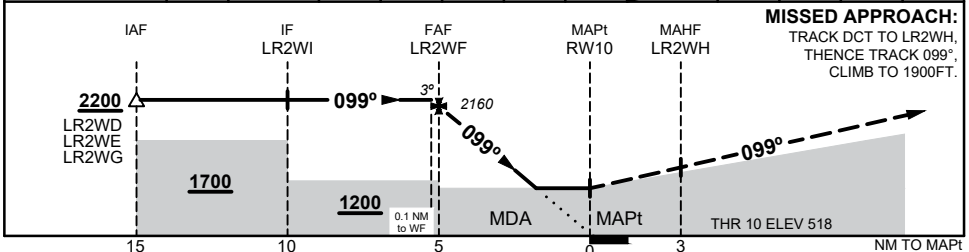
LRDGN01-171

16 JUN 2022

**LIGHTNING RIDGE, NSW (YLRD)**



NM TO NEXT WPT	0.1	LR2WF	4	3	2.3	2	1.7	RW10			
ALT (3° APCH PATH)	2200	2160	1840	1520	1290	1200	1110				



**NOTES**

- MAX IAS:  
INITIAL : 210KTS

CATEGORY	A	B	C	D
				NOT APPLICABLE
CIRCLING	<b>1110</b> (570 - 2.4)		<b>1290</b> (750 - 4.0)	
ALTERNATE	(1070 - 4.4)		(1250 - 6.0)	

Changes: PAL+AA

LRDGN02-171