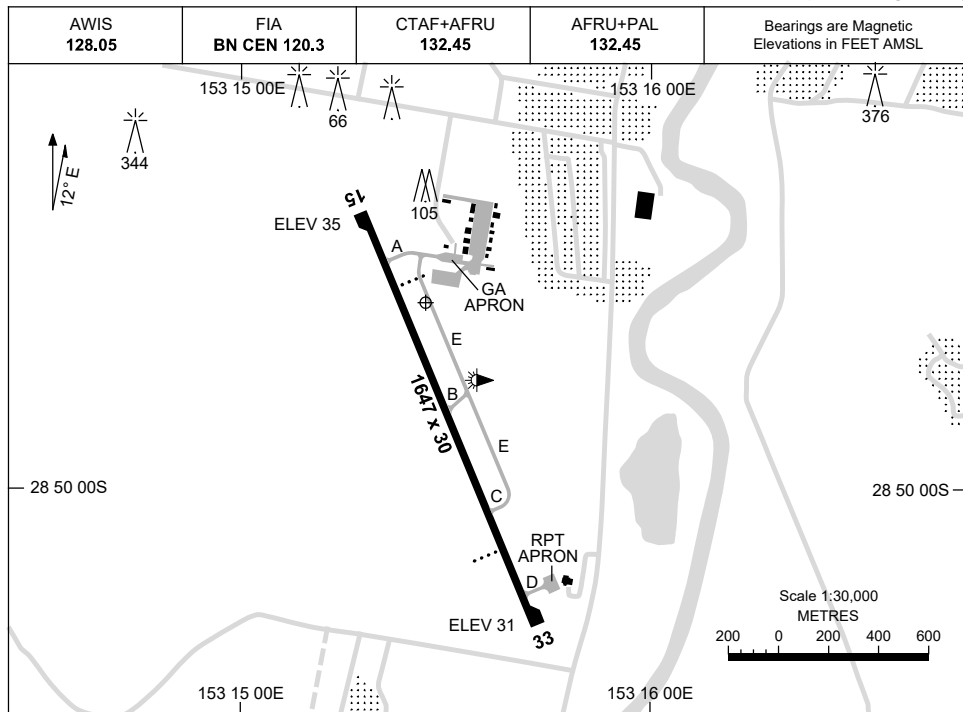


7 SEP 2023

AD ELEV 35
28 49 36S 153 15 27E

AERODROME CHART
LISMORE, NSW (YLIS)



AERODROME LIGHTING	
RWY	TAXIWAY : BLUE EDGE RL : AFRU+PAL 132.45 ; SDBY (15 SEC)
15 ¹⁴⁶ 326 33	PAPI LEFT SIDE 3.0° 42FT LIRL RTIL PAPI LEFT SIDE 3.0° 42FT LIRL RTIL

NOTES

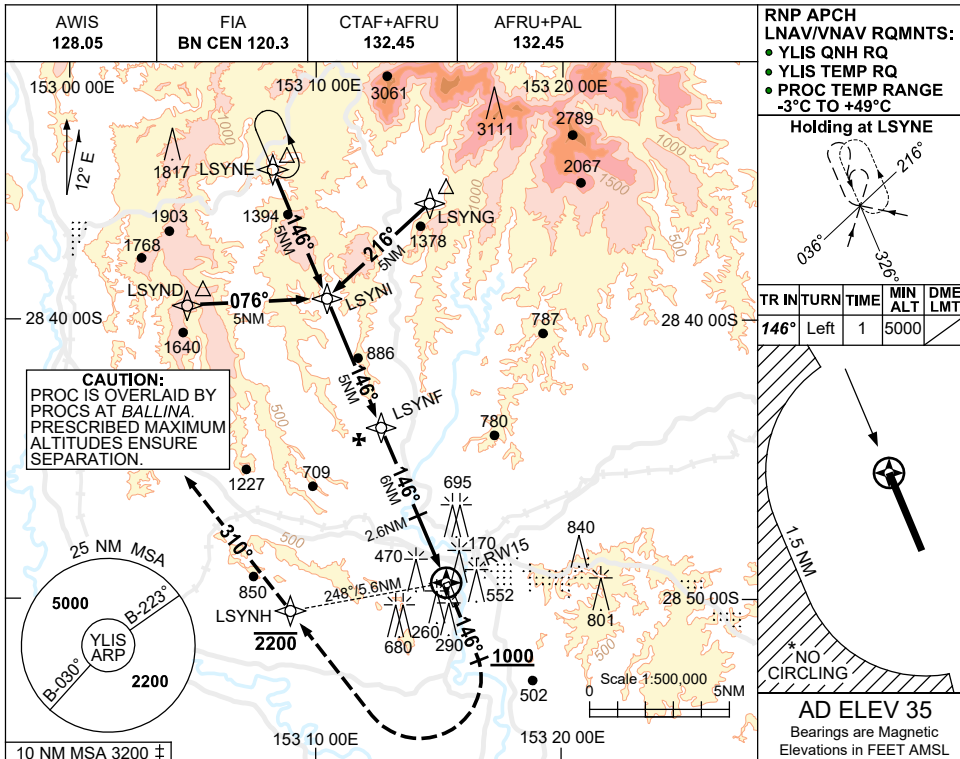
Changes: NOTES.

LISAD01-176

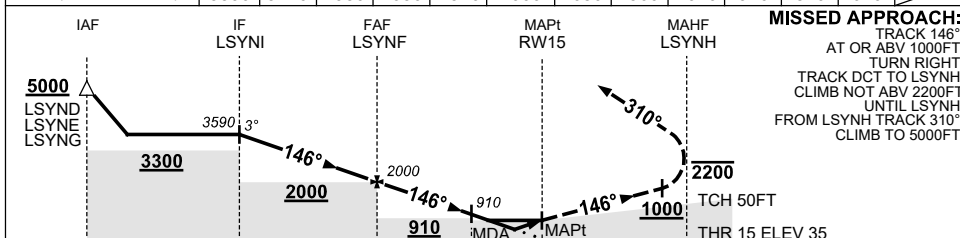
USE QNH

RNP RWY 15
LISMORE, NSW (YLIS)

7 SEP 2023



NM TO NEXT WPT	LSYNI	4	3	2	1	LSYNF	5	4	3	2.6	2.3	1.7	RW15
ALT (3° APCH PATH)	3590	3270	2950	2630	2310	2000	1680	1360	1040	910	810	620	



NOTES

- MAX IAS:
INITIAL : 210KT.
MAP TURN: 190KT.
- NO CIRCLING WEST OF RWY 15/33 BEYOND 1.5NM.
- 10 NM MSA IS A COMBINED AREA FOR YLIS, YBNA.
- COLOUR: SEE SPEC NOTICES.

CATEGORY	A	B	C	D
LNAV/VNAV		620 (585-3.3)		NOT APPLICABLE
LNAV		810 (775-4.4)		
CIRCLING *	1060 (1025-2.4)		1310(1275-4.0)	
ALTERNATE	(1525-4.4)		(1775-6.0)	

Changes: MODEL ACFT SYMBOL REMOVED.

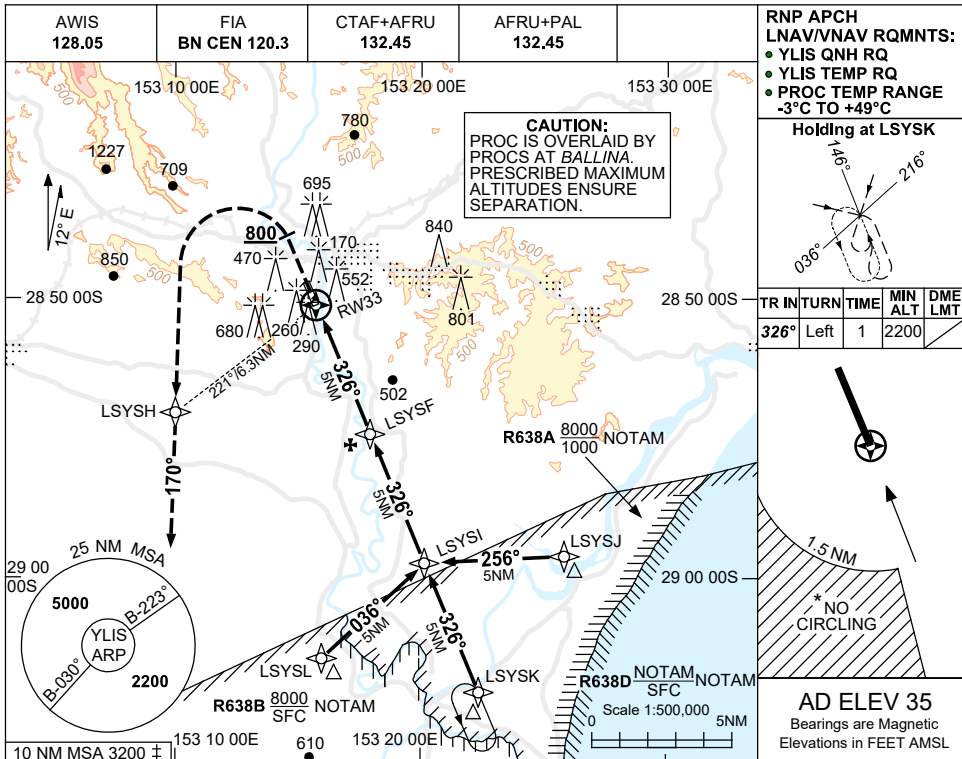
LISGN01-176

USE QNH

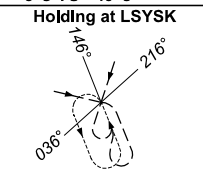
RNP RWY 33

LISMORE, NSW (YLIS)

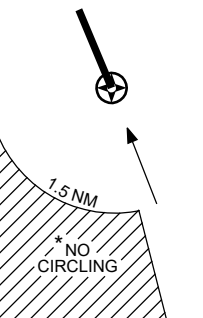
7 SEP 2023



RNP APCH
LNAV/VNAV RQMNTS:
● YLIS QNH RQ
● YLIS TEMP RQ
● PROC TEMP RANGE
-3°C TO +49°C

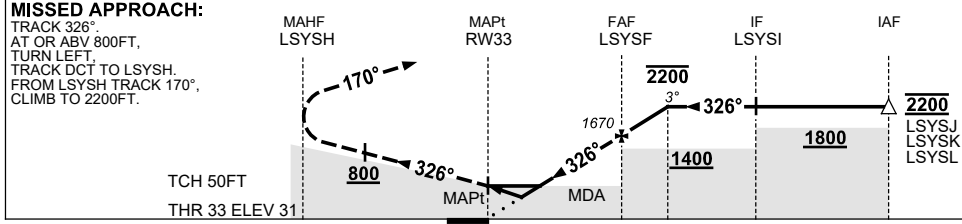


TR IN	TURN	TIME	MIN ALT	DME LMT
326°	Left	1	2200	



AD ELEV 35
Bearings are Magnetic
Elevations in FEET AMSL

NM TO NEXT WPT	RW33	1.6	2.2	3	4	LSYSF	1	1.7			
ALT (3° APCH PATH)		590	790	1040	1350	1670	1990	2200			



NM TO RW33

- NOTES**
- MAX IAS:
INITIAL : 210KT.
MAP TURN: 190KT.
 - NO CIRCLING WEST OF RWY 15/33 BEYOND 1.5NM.
 - 10 NM MSA IS A COMBINED AREA FOR YLIS, YBNA.
 - PROCEDURE NOT AVBL WHEN R638 ACTIVE.
 - COLOR: SEE SPEC NOTICES.

CATEGORY	A	B	C	D
LNAV/VNAV		590 (559-3.2)		NOT APPLICABLE
LNAV		790 (755-4.3)		
CIRCLING*	1060 (1025-2.4)		1310 (1275-4.0)	
ALTERNATE	(1525-4.4)		(1775-6.0)	

Changes: MODEL ACFT SYMBOL REMOVED. LISGN02-176