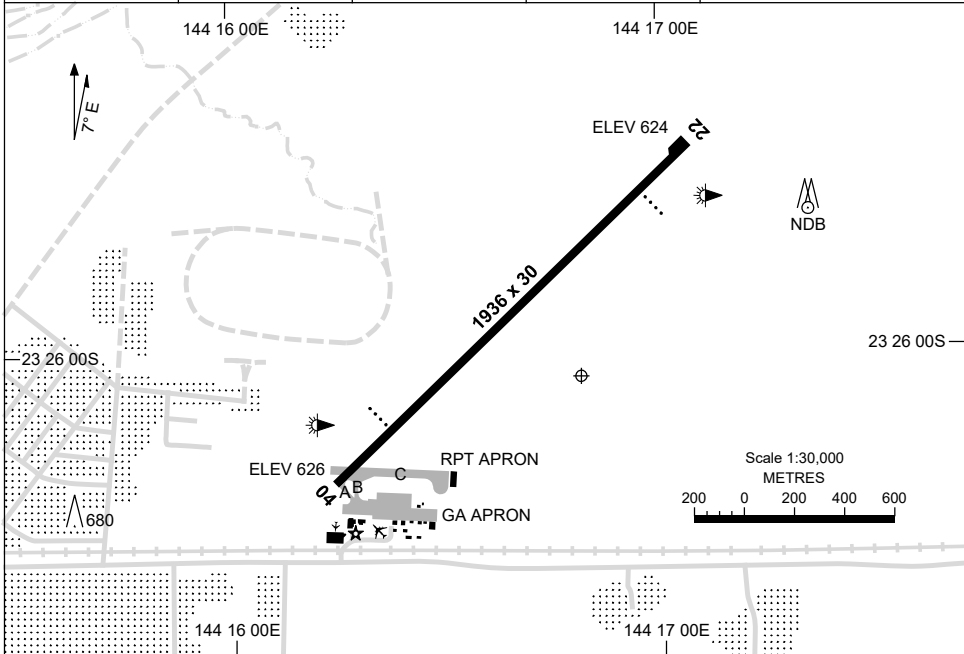


7 SEP 2023

AD ELEV 627
23 26 03S 144 16 49E

AERODROME CHART
LONGREACH, QLD (YLRE)

FIA BN CEN 122.1	CTAF+AFRU 126.7	AFRU+PAL 126.7		Bearings are Magnetic Elevations in FEET AMSL
---------------------	--------------------	-------------------	--	--



AERODROME LIGHTING	
RWY	ABN : FLG W 8 SEC TAXIWAY : BLUE EDGE ON A & C RL : AFRU+PAL 126.7 , SDBY , PTBL (EMERG ONLY, 90 MIN PN)
	04 ⁰³⁹ 219 22
	PAPI 3.0° 46FT LIRL PTBL
	PAPI 3.0° 46FT LIRL PTBL

NOTES

- HJ, PAL ACTIVATES PAPI ONLY.
- AWIS (PHONE) 07 3564 3723

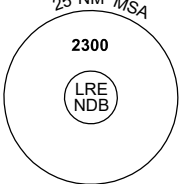
Changes: NOTES.

LREAD01-176

GNSS ARRIVAL PROCEDURES LONGREACH, QLD (YLRE)

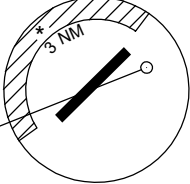
15 AUG 2019

FIA BN CEN 122.1	CTAF+AFRU 126.7	AFRU+PAL 126.7			Bearings are Magnetic Elevations in FEET AMSL
---------------------	--------------------	-------------------	--	--	--



25 NM MSA
2300
LRE NDB

REFERENCE WAYPOINT LRE NDB
AWIS (PHONE) 07 3564 3723



3 NM

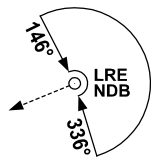
10 NM MSA 2300

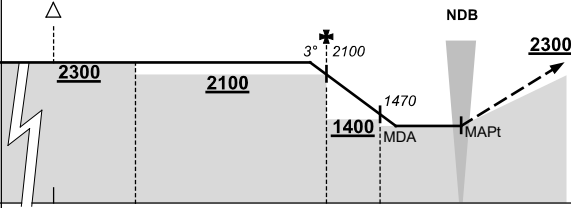
LRE : NDB 353

* NO CIRCLING N
OF RWY 04/22
BEYOND 3 NM.

AD ELEV 627

SECTOR A





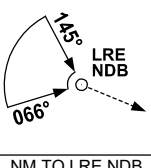
NDB

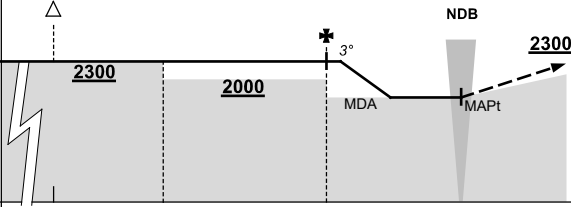
MISSED APPROACH:
CLIMB ON TRACK
TO 2300FT.

NOTE:
REMAIN CLEAR OF
R608.

NM TO LRE NDB	25	15	12	5	3	0													
CIRCLING MINIMA				A,B: 1310-2.4	C: 1410-4.0		D: N/A												
NM TO LRE NDB	5.6	5	4	3	2.8	2.5													
ALT (3° APCH PATH)	2300	2100	1780	1470	1410	1310													

SECTOR B





NDB

MISSED APPROACH:
CLIMB ON TRACK
TO 2300FT.

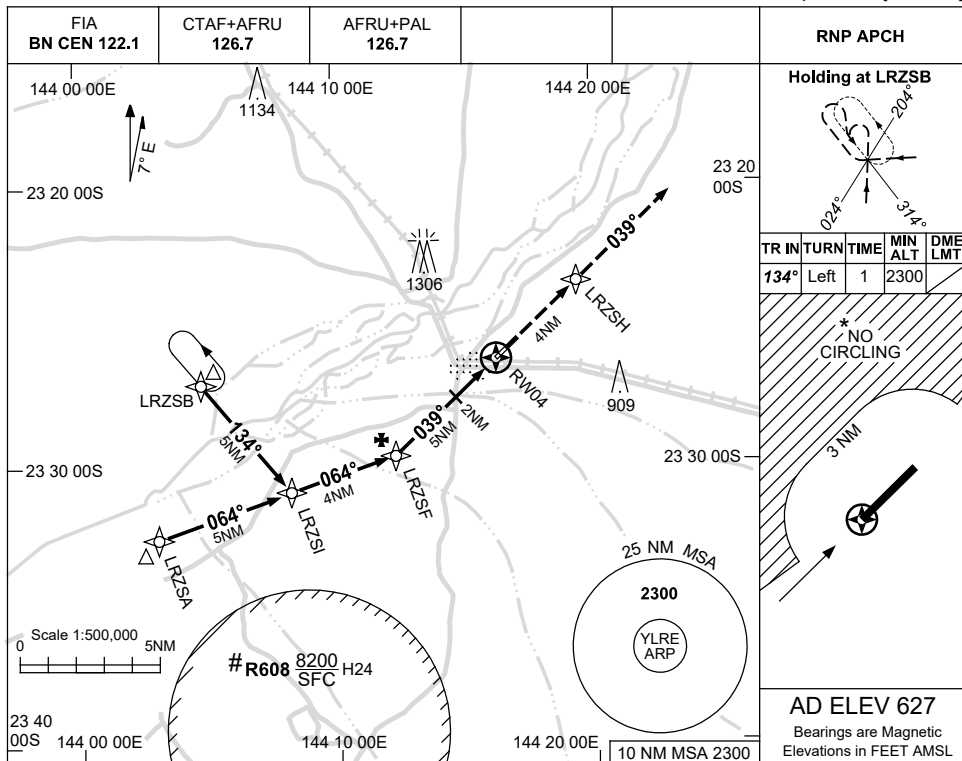
NM TO LRE NDB	25	15	11	5	0														
CIRCLING MINIMA				A,B: 1710-2.4	C: 1710-4.0		D: N/A												
NM TO LRE NDB	4.5	4	3	2.7															
ALT (3° APCH PATH)	2300	2140	1820	1710															

Changes: SECTOR BOUNDARIES, SECTOR A MNM, AWIS PHONE, Editorial. LREDG01-160

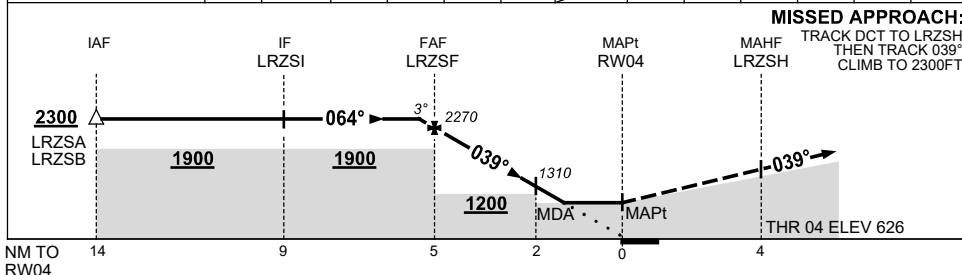
USE QNH

RNP RWY 04
LONGREACH, QLD (YLRE)

16 JUN 2022



NM TO NEXT WPT	0.1	LRZSF	4	3	2	1.5	RW04						
ALT (3° APCH PATH)	2300	2270	1950	1630	1310	1140							



NOTES

1. MAX IAS: INITIAL : 210KT.
2. NO CIRCLING NW OF RWY 04/22 BEYOND 3NM.
3. CAUTION: R608 H24
4. AWIS PHONE 07 3564 3723

CATEGORY	A	B	C	D
LNAV	1140 (513-2.9)			NOT APPLICABLE
CIRCLING *	1250 (623-2.4)		1410 (783-4.0)	
ALTERNATE	(1123-4.4)		(1283-6.0)	

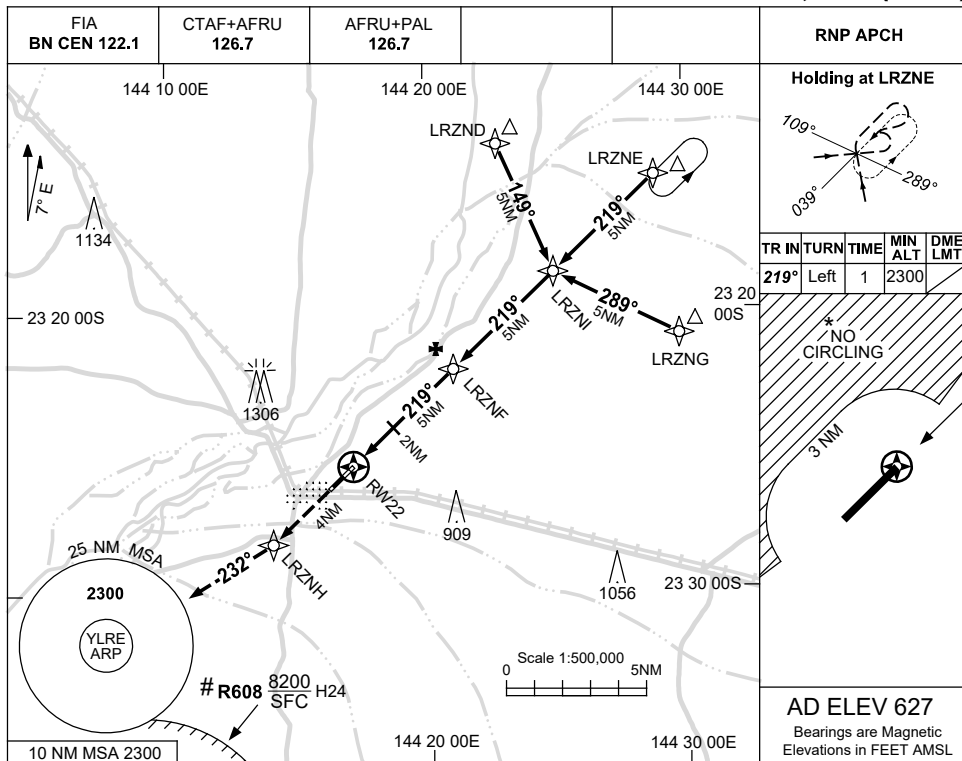
Changes: CHART TITLE, PBN SPECIFICATION BOX.

LRGN01-171

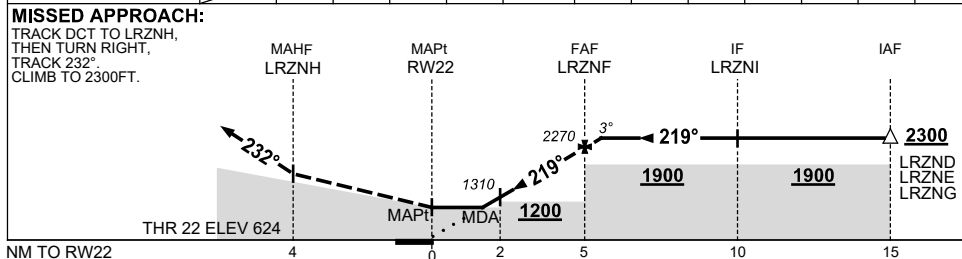
USE QNH

RNP RWY 22
LONGREACH, QLD (YLRE)

16 JUN 2022



NM TO NEXT WPT	RW22	1.5	2	3	4	LRZNF	0.1			
ALT (3° APCH PATH)		1140	1310	1630	1950	2270	2300			



NOTES

- MAX IAS: INITIAL : 210KT.
- NO CIRCLING NW OF RWY 04/22 BEYOND 3NM.
- CAUTION:** R608 H24
- AWIS PHONE 07 3564 3723

CATEGORY	A	B	C	D
LNAV	1140 (513-2.9)			NOT APPLICABLE
CIRCLING *	1250 (623-2.4)		1410 (783-4.0)	
ALTERNATE	(1123-4.4)		(1283-6.0)	

Changes: CHART TITLE, PBN SPECIFICATION BOX.

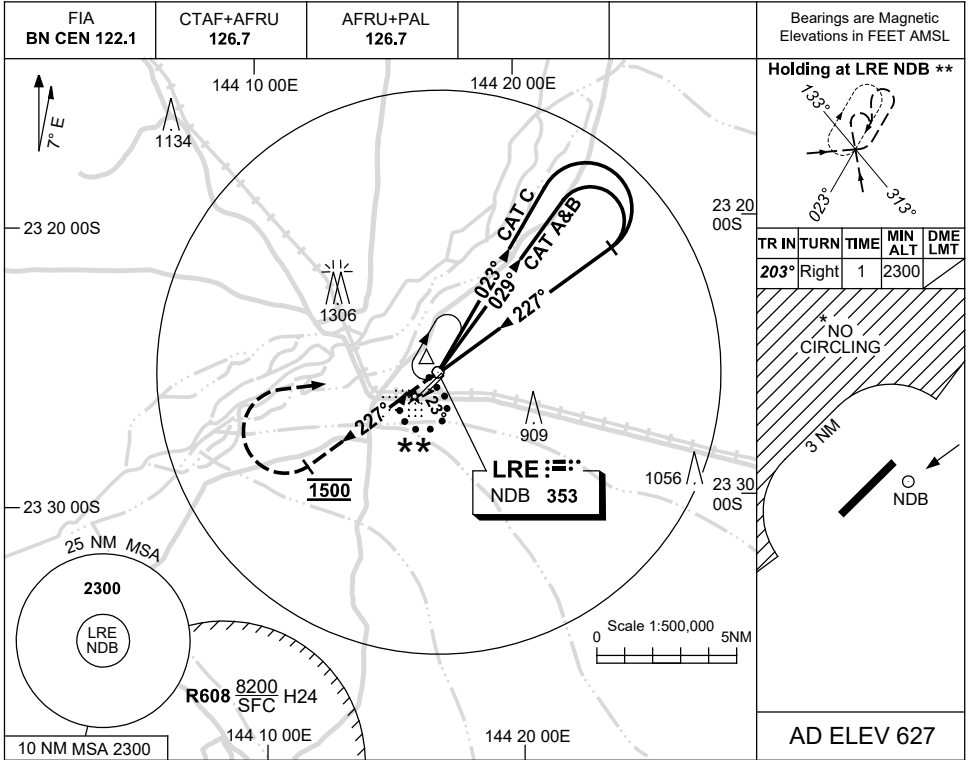
LRGN02-171

USE QNH

NDB-A

15 AUG 2019

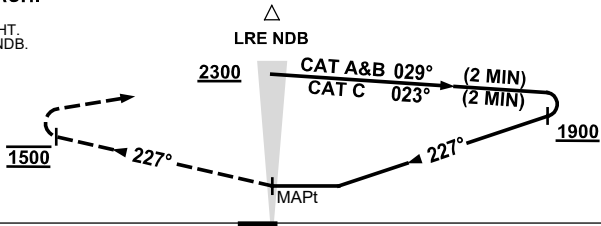
LONGREACH, QLD (YLRE)



DME DIST	NOT APPLICABLE			
ALT				

MISSED APPROACH:

TRACK 227°.
AT 1500FT TURN RIGHT.
TRACK DCT TO LRE NDB.
CLIMB TO 2300FT.



NOTES

1. MAX IAS:
INITIAL : 210KT,
80/260 REVERSAL: 210KT.
- *2. NO CIRCLING N
OF RWY 04/22
BEYOND 3NM.
- **3. PROC TURN
(80°/260°)REQD TO
JOIN PROC FROM
HOLD.
4. AWIS PHONE
07 3564 3723

CATEGORY	A	B	C	D
				NOT APPLICABLE
CIRCLING *	1250 (623-2.4)		1410 (783-4.0)	
ALTERNATE	(1123-4.4)		(1283-6.0)	

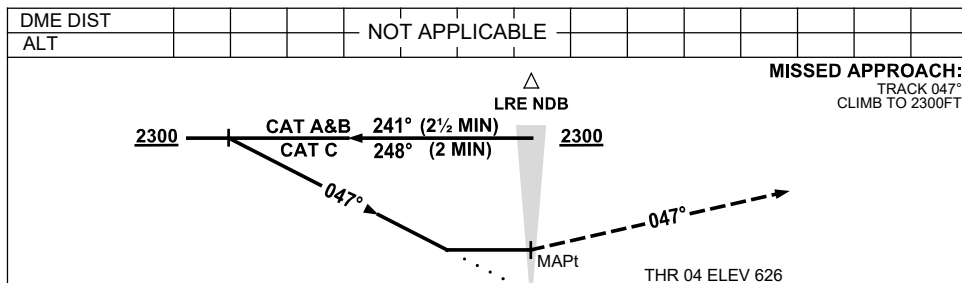
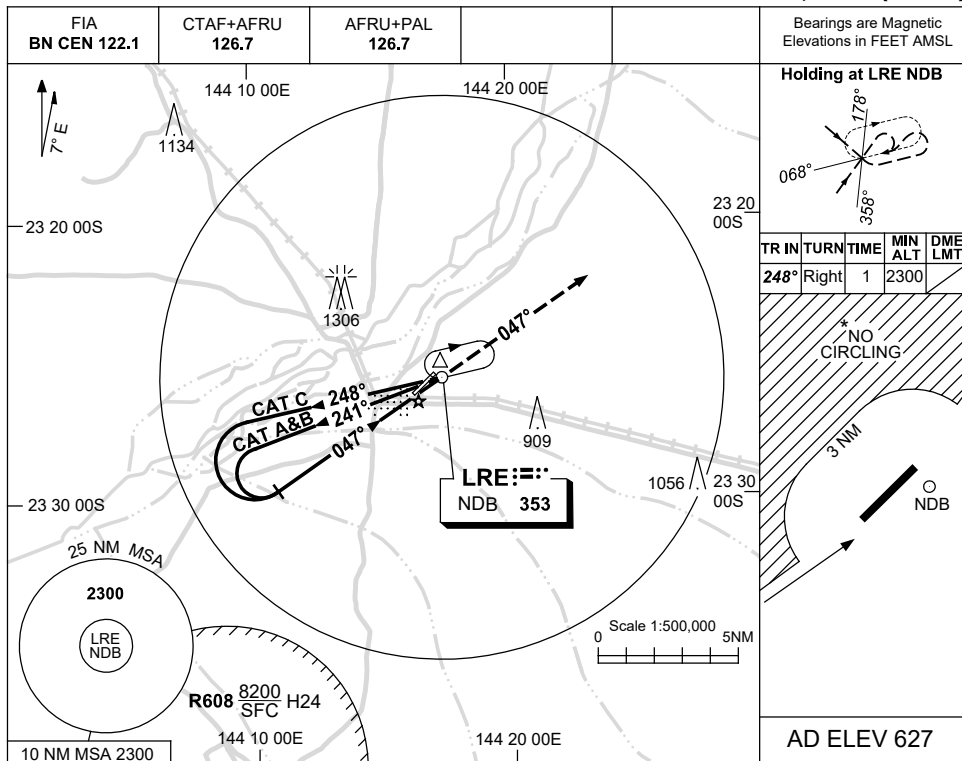
Changes: MAG VAR, TRACK BRGS, CO-ORD FORMAT, CAT C CIRCLING NMN, NOTE 4, Editorial.

LREN01-160

USE QNH

NDB RWY 04
LONGREACH, QLD (YLRE)

15 AUG 2019



NOTES

- MAX IAS:
INITIAL :
CAT A&B 140KT.
CAT C 180KT.
- NO CIRCLING N OF RWY 04/22 BEYOND 3NM.
- AWIS PHONE 07 3564 3723

CATEGORY	A	B	C	D
S-I NDB	1250 (623-3.5)			NOT APPLICABLE
CIRCLING*	1250 (623-2.4)	1410 (783-4.0)		
ALTERNATE	(1123-4.4)		(1283-6.0)	

Changes: MAG VAR, CAT C CIRCLING, CO-ORD FORMAT, NOTE 3, Editorial.

LREN02-160