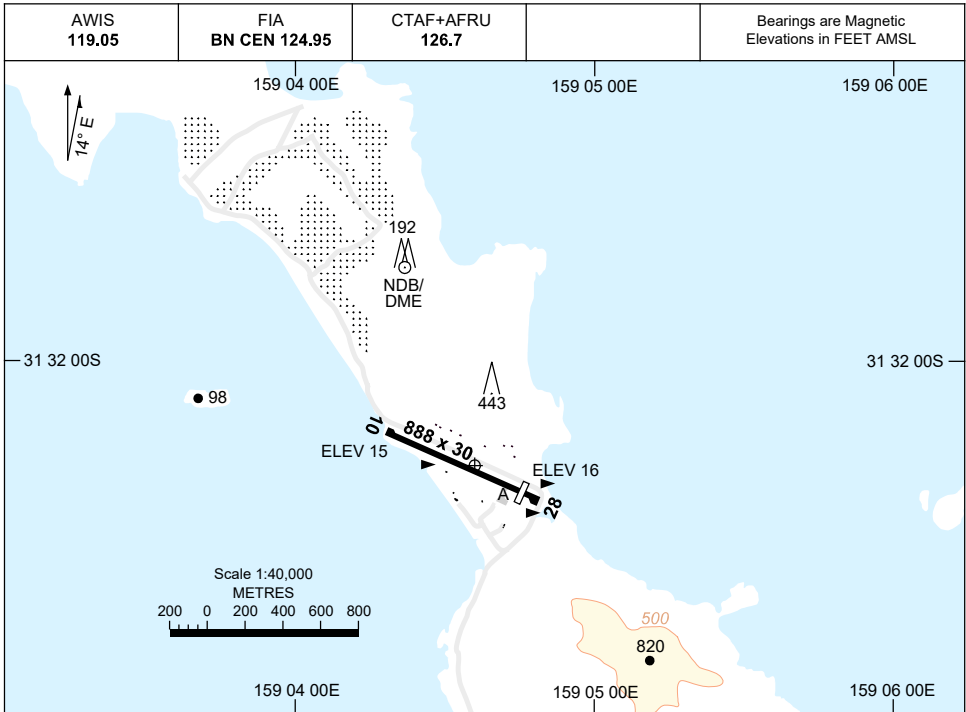


7 SEP 2023

AD ELEV 17
31 32 18S 159 04 38E

AERODROME CHART
LORD HOWE ISLAND, NSW (YLHI)



	AERODROME LIGHTING
RWY	RL : PTBL IN EMERG ONLY , 1 HR PN RQ
10 <small>100</small>	PTBL
<small>280</small> 28	PTBL

NOTES

1. COLOUR: SEE SPEC NOTICES.
2. AWIS ACTIVATED BY 1 SEC TRANSMISSION.
3. PARKING BAY CO-ORDINATES:

BAY 1	31 32 25.12S 159 04 42.01E
BAY 2	31 32 25.47S 159 04 43.04E

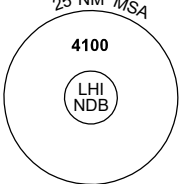
Changes: NOTES.

LHIAD01-176

DME or GNSS ARRIVAL PROCEDURES LORD HOWE ISLAND, NSW (YLHI) Page 1

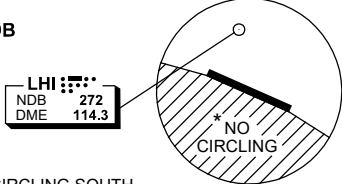
13 JUN 2024

AWIS 119.05	FIA BN CEN 124.95	CTAF+AFRU 126.7			Bearings are Magnetic Elevations in FEET AMSL
----------------	----------------------	--------------------	--	--	--



25 NM MSA
4100
LHI NDB

**DME USING LHI DME
REFERENCE WAYPOINT LHI NDB**



LHI NDB 272
DME 114.3

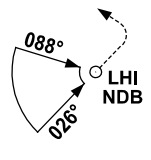
* NO CIRCLING

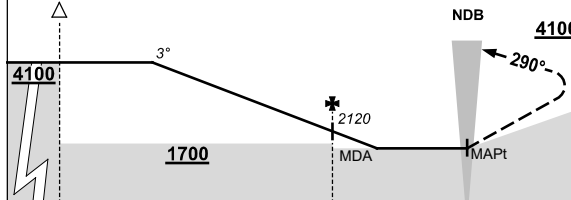
10 NM MSA 4100

* NO CIRCLING SOUTH
OF RWY 10/28.

AD ELEV 17

SECTOR A



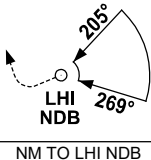


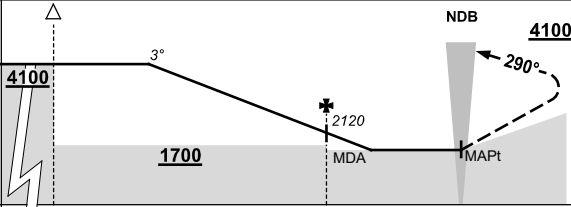
MISSED APPROACH:

TURN LEFT,
TRACK 290°.
CLIMB TO 4100FT.

NM TO LHI NDB	25	15					5	0						
CIRCLING MINIMA	A,B: 1340-2.4			C: 1440-4.0			D: N/A							
NM TO LHI NDB	11.2	11	10	9	8	7	6	5	4	2.8	2.5			
ALT (3° APCH PATH)	4100	4030	3710	3400	3080	2760	2440	2120	1800	1440	1340			

SECTOR B



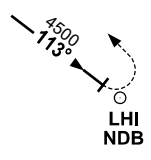


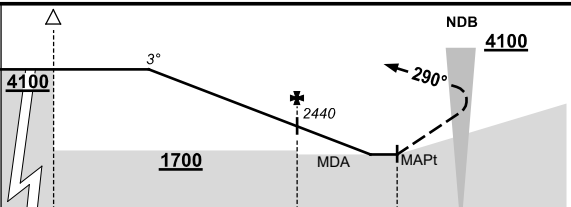
MISSED APPROACH:

TURN RIGHT,
TRACK 290°.
CLIMB TO 4100FT.

NM TO LHI NDB	25	15					5	0						
CIRCLING MINIMA	A,B: 1340-2.4			C: 1440-4.0			D: N/A							
NM TO LHI NDB	11.2	11	10	9	8	7	6	5	4	2.8	2.5			
ALT (3° APCH PATH)	4100	4030	3710	3400	3080	2760	2440	2120	1800	1440	1340			

KIBAT TO LHI





MISSED APPROACH:

AT 2.3 DME TURN LEFT,
TRACK 290°.
CLIMB TO 4100FT.

NM TO LHI NDB	25	15					6	2.3	0					
CIRCLING MINIMA	A,B: 1340-2.4			C: 1440-4.0			D: N/A							
NM TO LHI NDB	11.2	11	10	9	8	7	6	5	4	2.8	2.5			
ALT (3° APCH PATH)	4100	4030	3710	3400	3080	2760	2440	2120	1800	1440	1340			

Changes: KIBAT REPLACES CHEWY.

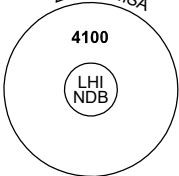
LHIDG01-179

DME or GNSS ARRIVAL PROCEDURES LORD HOWE ISLAND, NSW (YLHI) Page 2

16 JUN 2022

AWIS 119.05	FIA BN CEN 124.95	CTAF+AFRU 126.7			Bearings are Magnetic Elevations in FEET AMSL
----------------	----------------------	--------------------	--	--	--


25 NM MSA




4100

LHI NDB

**DME USING LHI DME
REFERENCE WAYPOINT LHI NDB**



LHI NDB 272
DME 114.3

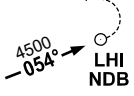
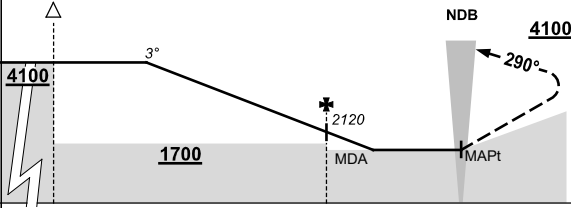


* NO CIRCLING

10 NM MSA 4100

* NO CIRCLING SOUTH
OF RWY 10/28.

AD ELEV 17

<p>ABARB TO LHI</p>  <p>4500 054° LHI NDB</p>	 <p>4100 3° 1700 2120 MDA 290° NDB 4100</p>	<p>MISSED APPROACH:</p> <p>TURN LEFT, TRACK 290°. CLIMB TO 4100FT.</p>
NM TO LHI NDB	25 15 5 0	
CIRCLING MINIMA	A,B: 1340-2.4	C: 1440-4.0 D: N/A
NM TO LHI NDB	11.2 11 10 9 8 7 6 5 4 2.8 2.5	
ALT (3° APCH PATH)	4100 4030 3710 3400 3080 2760 2440 2120 1800 1440 1340	

Changes: CIRCLING MINIMA, DIST/ALT TABLE.

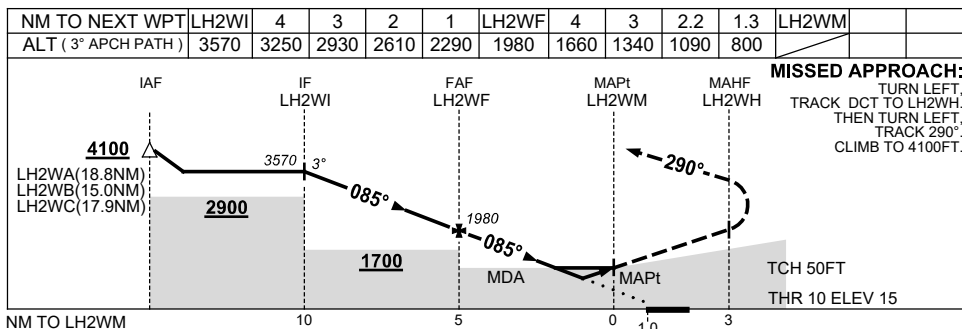
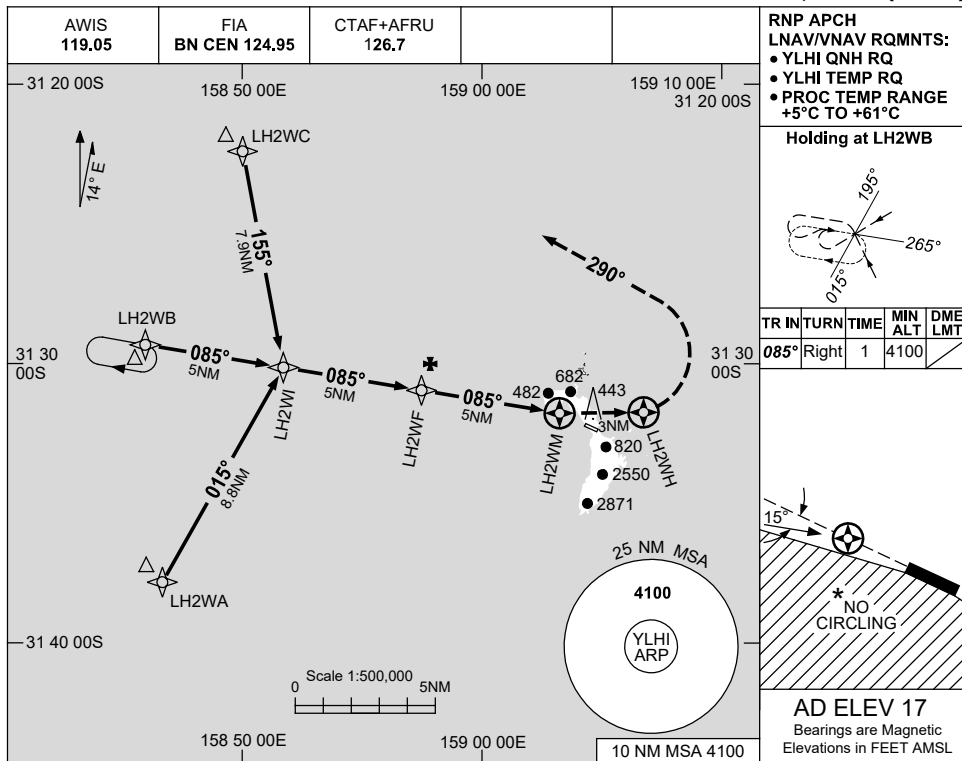
LHIDG02-171

USE QNH

RNP RWY 10

16 JUN 2022

LORD HOWE ISLAND, NSW (YLHI)



CATEGORY	A	B	C	D	
LNAV/VNAV	800 (785-4.5)			NOT APPLICABLE	
LNAV	1090 (1073-5.0)				
CIRCLING *	1340 (1323-2.4)		1440 (1423-4.0)		
ALTERNATE	(1823-4.4)		(1923-6.0)		

- NOTES**
1. MAX IAS: INITIAL : 210KT.
 - * 2. NO CIRCLING STH OF RWY 10/28.

Changes: MINIMA, WPT NAMING CONVENTION, Editorial.

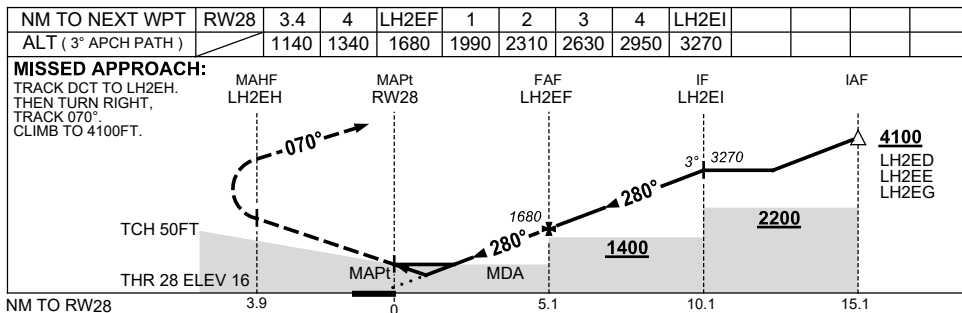
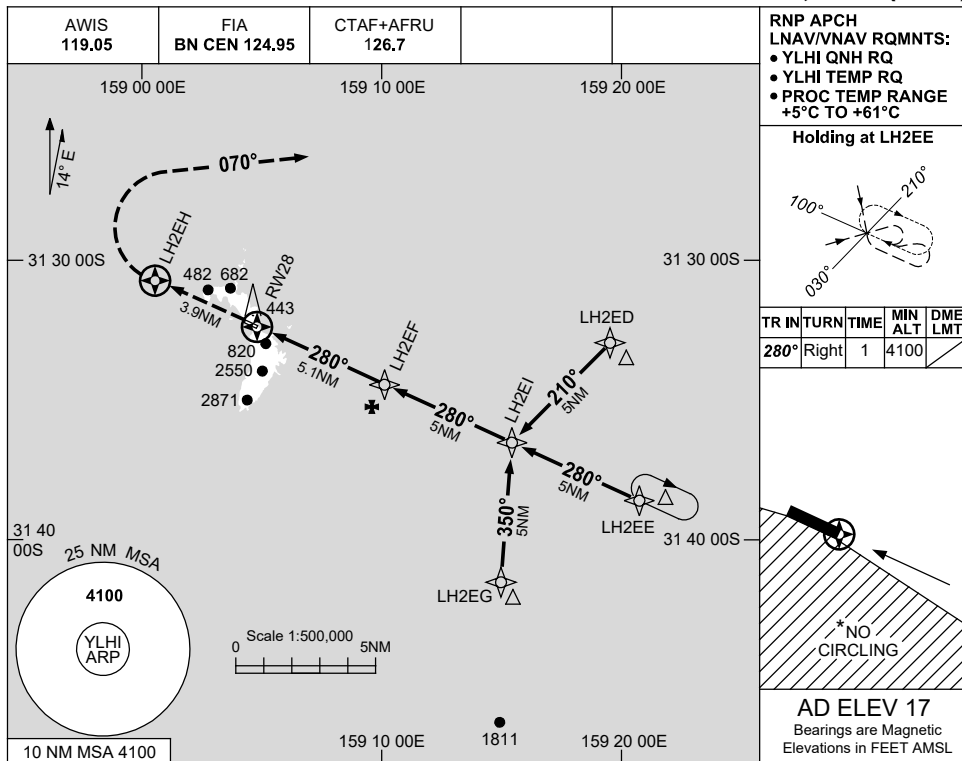
LHIGN01-171

USE QNH

RNP RWY 28

16 JUN 2022

LORD HOWE ISLAND, NSW (YLHI)



NOTES

CATEGORY	A	B	C	D
LNAV/VNAV		1140 (1124-5.0)		NOT APPLICABLE
LNAV		1340 (1323-5.0)		
CIRCLING *	1340 (1323-2.4)	1440 (1423-4.0)		
ALTERNATE	(1823-4.4)	(1923-6.0)		

1. MAX IAS: INITIAL : 210KT.
- * 2. NO CIRCLING S OF RWY 10/28.

Changes: MINIMA, DIST/ALT TABLE, WPT NAMING CONVENTION, Editorial.

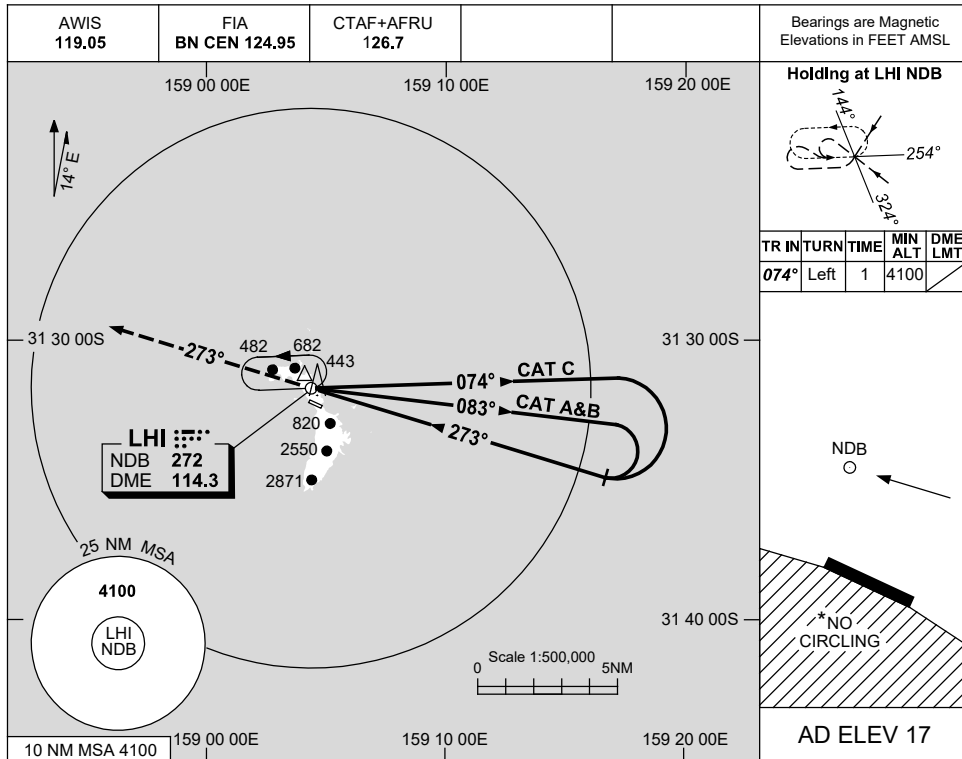
LHIGN03-171

USE QNH

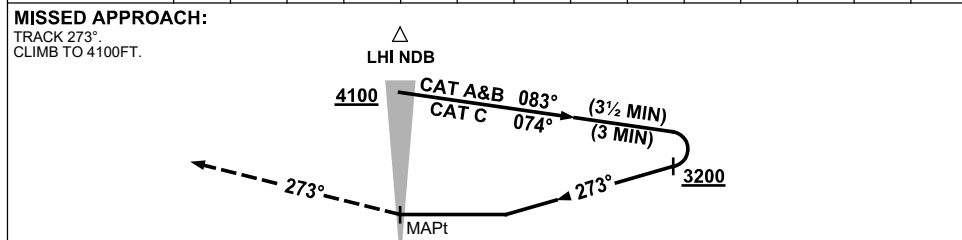
NDB-A

LORD HOWE ISLAND, NSW (YLHI)

16 JUN 2022



DME DIST						NOT APPLICABLE				
ALT										



NOTES

CATEGORY	A	B	C	D
				NOT APPLICABLE
CIRCLING *	1340 (1323-2.4)		1440 (1423-4.0)	
ALTERNATE	(1823-4.4)		(1923-6.0)	

* 1. NO CIRCLING S OF RWY 10/28.

Changes: MINIMA, Editorial.

LHINB01-171