

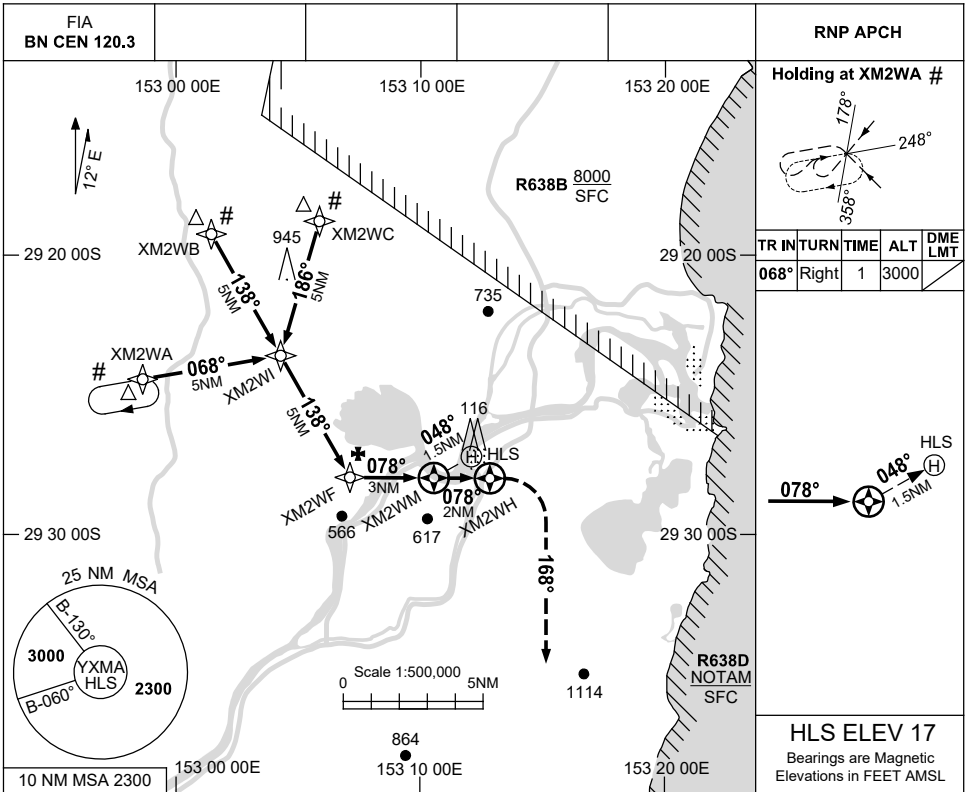
# FOR CASA APPROVED OPERATORS ONLY

USE QNH

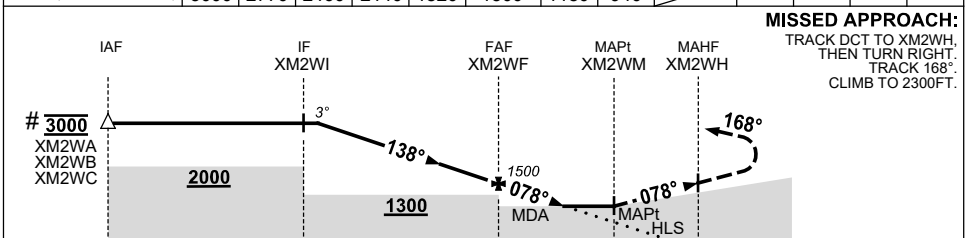
RNP 078

23 MAR 2023

MACLEAN HOSPITAL, NSW (YXMA)



NM TO NEXT WPT	4.7	4	3	2	1	XM2WF	2	1.2	XM2WM			
ALT (3° APCH PATH)	3000	2770	2460	2140	1820	1500	1180	940				



**MISSED APPROACH:**  
 TRACK DCT TO XM2WH.  
 THEN TURN RIGHT.  
 TRACK 168°.  
 CLIMB TO 2300FT.

NM TO XM2WM	13	8	3	0	1.5	2
-------------	----	---	---	---	-----	---

<b>CATEGORY</b>	<b>H</b>
LNAV (NON VAA)	<b>940 (923-5.0)</b>
CIRCLING	NOT APPLICABLE
ALTERNATE	NOT APPLICABLE

- NOTES**
- CAUTION:** PROCEDURE IN CLOSE PROXIMITY TO R638B & R638D.
  - PROC IS OVERLAID BY YGFN RNP RWY 18. PRESCRIBED MAXIMUM ALTITUDES ENSURE SEPARATION

Changes: WPT NAMING CONVENTION, Editorial.

XMAGN01-174

# FOR CASA APPROVED OPERATORS ONLY