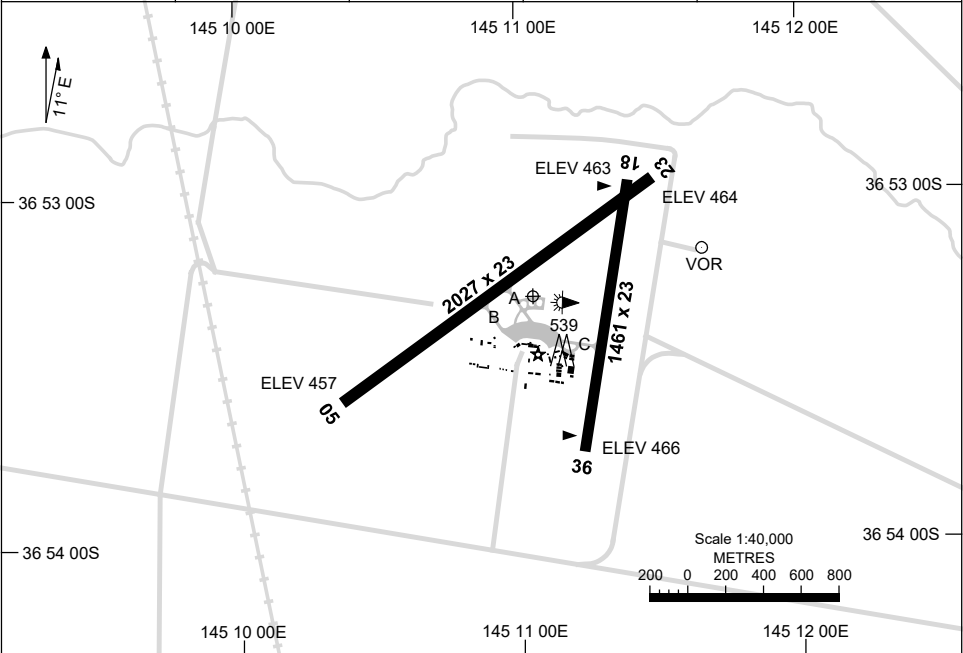


15 JUN 2023

AD ELEV 467  
36 53 18S 145 11 03E

**AERODROME CHART**  
**MANGALORE, VIC (YMNG)**

AWIS 128.825	FIA ML CEN 122.4	CTAF 121.1	Bearings are Magnetic Elevations in FEET AMSL
-----------------	---------------------	---------------	--



RWY	AERODROME LIGHTING	
		ABN : ALTN W/G 8 SEC TAXIWAYS : BLUE EDGE RL : MAN ON RQ , SDBY (12 SEC) ( ARO : 0428 863 439)
<b>05</b> <sup>043</sup>	LIRL	
<sup>223</sup> <b>23</b>	LIRL	
<b>18</b> <sup>178</sup>	LIRL	
<sup>358</sup> <b>36</b>	LIRL	

**NOTES**

1. AWIS REQUIRES ONE-SECOND PULSE TO ACTIVATE.

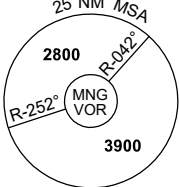
Changes: NOTES.

MNGAD01-175

# GNSS ARRIVAL PROCEDURES MANGALORE, VIC (YMNG)

17 JUN 2021

AWIS 128.825	FIA ML CEN 122.4	CTAF 121.1		Bearings are Magnetic Elevations in FEET AMSL
-----------------	---------------------	---------------	--	--




25 NM MSA

2800  
MNG VOR  
3900

R-252°    R-042°

**REFERENCE WAYPOINT MNG VOR**

**MNG VOR** 113.2




\* NO CIRCLING

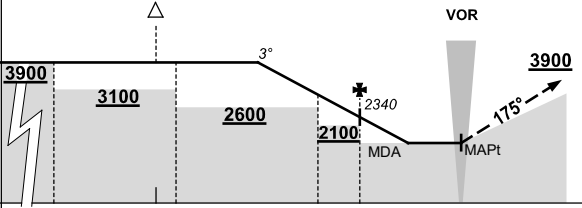
10 NM MSA 3400

AD ELEV 467

\* NO CIRCLING IN SECTOR EAST OF RWY 18/36 AND STH EAST OF RWY 05/23.

**SECTOR A**





VOR

**MISSED APPROACH:**


TURN AS APPROPRIATE TRACK 175°. CLIMB TO 3900FT.

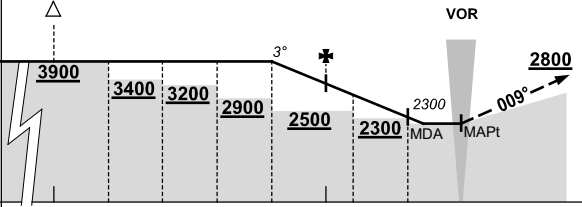
**NOTES:**

1. MAX IAS: MAP TURN: 200KT.

NM TO MNG VOR	25	20	15	14	7	5	0											
<b>CIRCLING MINIMA</b>					<b>A,B: 1600-2.4</b>	<b>C: 1600-4.0</b>		<b>D: 1600-5.0</b>										
NM TO MNG VOR	10	9	8	7	6	5	4	3	2.7									
ALT (3° APCH PATH)	3900	3620	3300	2980	2660	2340	2020	1700	1600									

**SECTOR B**





VOR

**MISSED APPROACH:**

TURN AS APPROPRIATE TRACK 009°. CLIMB TO 2800FT.

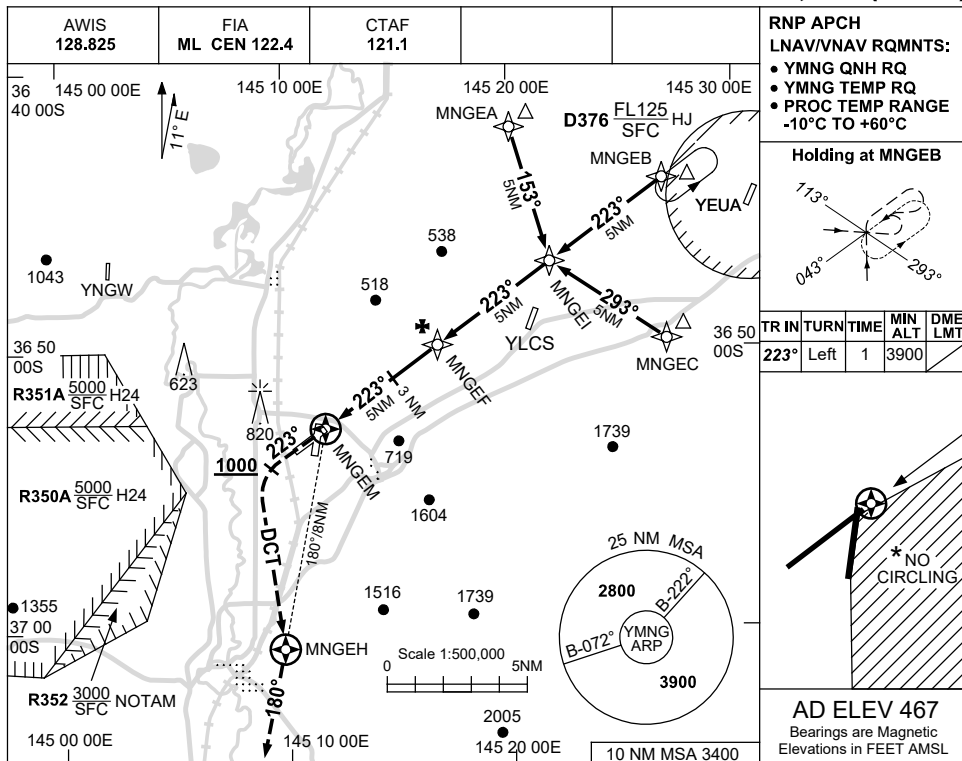
NM TO MNG VOR	25	15	13	11	9	7	5	4	2	0								
<b>CIRCLING MINIMA</b>					<b>A,B: 2100-2.4</b>	<b>C: 2100-4.0</b>		<b>D: 2100-5.0</b>										
NM TO MNG VOR	7	6	5	4	3	2	1.4											
ALT (3° APCH PATH)	3900	3580	3260	2940	2620	2300	2100											

USE QNH

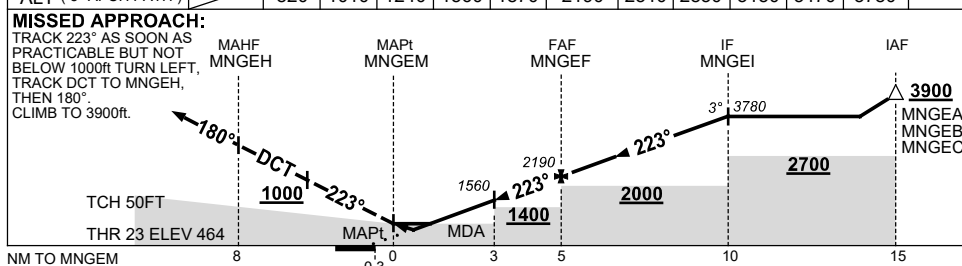
RNP RWY 23

30 NOV 2023

MANGALORE, VIC (YMNG)



NM TO NEXT WPT	MNGEM	0.7	1.3	2	3	4	MNGEF	1	2	3	4	MNGEI
ALT (3° APCH PATH)	820	1010	1240	1560	1870	2190	2510	2830	3150	3470	3780	3900



CATEGORY	A	B	C	D
LNAV/VNAV	820 (356-2.0)			
LNAV	1010 (543-3.1)			
CIRCLING *	1320 (853-2.4)		1420 (953-4.0)	1420 (953-5.0)
ALTERNATE	(1353-4.4)		(1453-6.0)	(1453-7.0)

- NOTES**
- MAX IAS:  
 INITIAL : 210KT,  
 MAP TURN: 200KT.
  - \* NO CIRCLING IN SECTOR EAST OF RWY 18/36 AND STH EAST OF RWY 05/23.

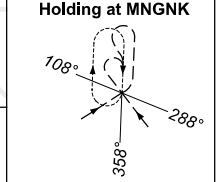
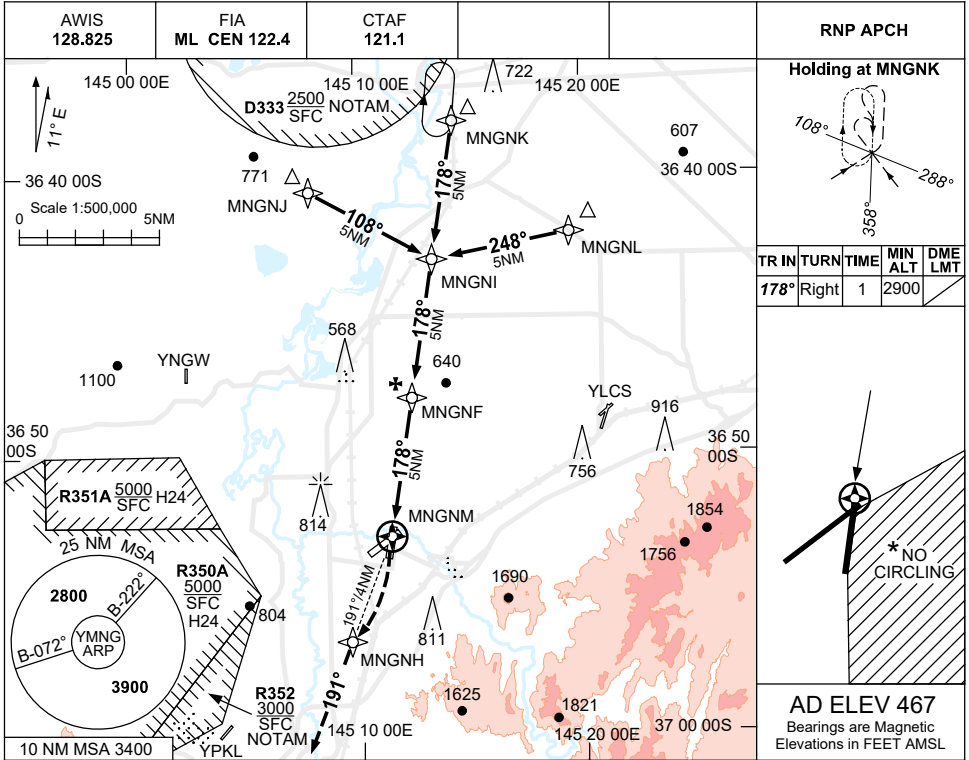
Changes: D366 REMOVED, Editorial.

MNGGN01-177

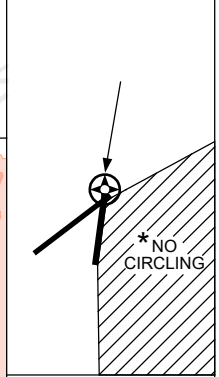
USE QNH

RNP RWY 18  
MANGALORE, VIC (YMNG)

30 NOV 2023



TR IN	TURN	TIME	MIN ALT	DME LMT
178°	Right	1	2900	

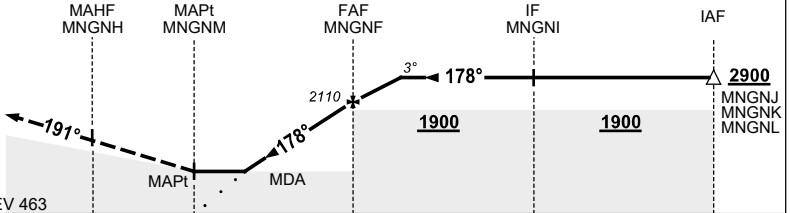


**AD ELEV 467**  
Bearings are Magnetic  
Elevations in FEET AMSL

NM TO NEXT WPT	MNGNM	1.5	2	3	4	MNGNF	1	2.5				
ALT (3° APCH PATH)	990	1150	1470	1790	2110	2430	2900					

**MISSED APPROACH:**

TURN RIGHT  
TRACK DCT TO MNGNH  
THEN TRACK 191°  
CLIMB TO 3900ft



NM TO MNGNM

**NOTES**

- MAX IAS:  
INITIAL : 210KT
- \* NO CIRCLING IN SECTOR SOUTH EAST OF RWYS 18/36 AND 05/23.
- HOLD AREA OVERLAY YSHT NDB-A PRESCRIBED ALT ENSURES SEPARATION.
- COLOUR: SEE SPEC NOTICES.

CATEGORY	A	B	C	D
LNAV	990 (523-2.9)			NOT APPLICABLE
CIRCLING *	1320(853-2.4)		1420(953-4.0)	
ALTERNATE	(1353-4.4)		(1453-6.0)	

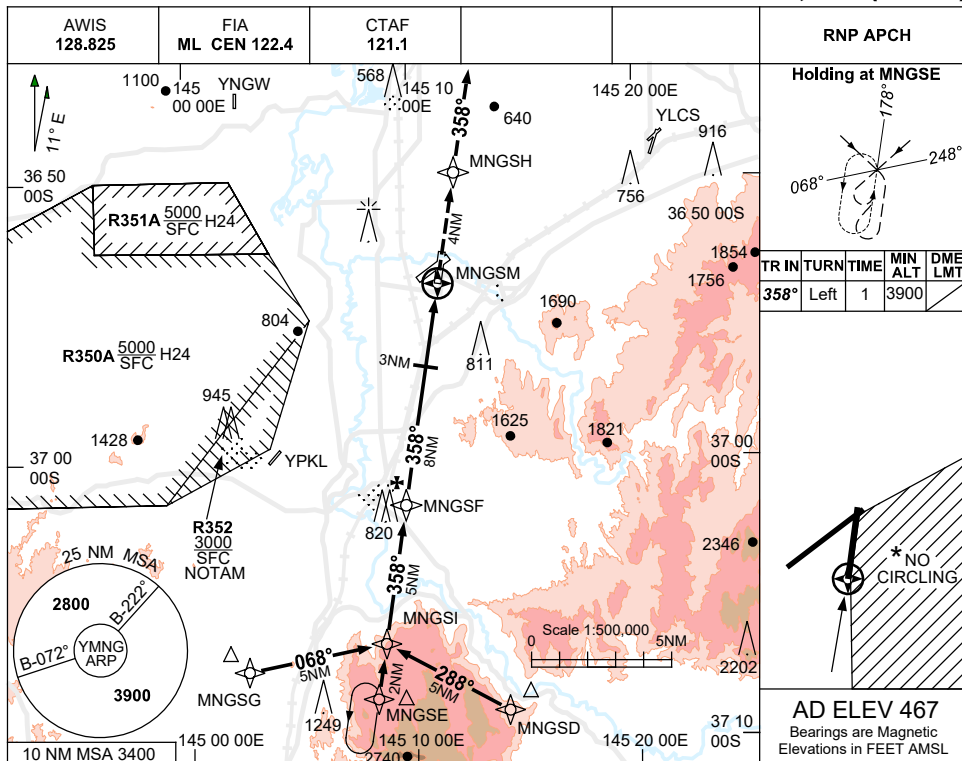
Changes: D366 REMOVED.

MNGGN02-177

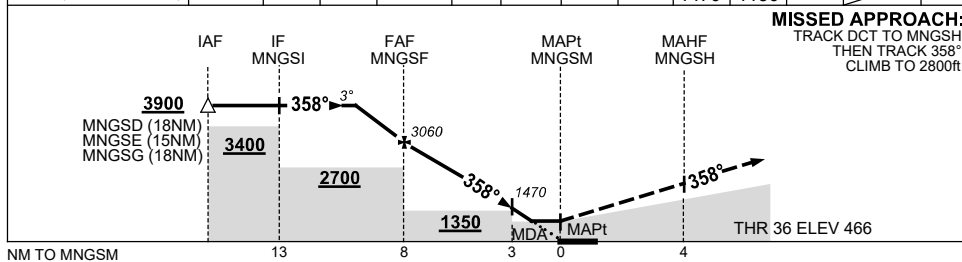
USE QNH

RNP RWY 36  
MANGALORE, VIC (YMNG)

30 NOV 2023



NM TO NEXT WPT	2.6	2	1	MNGSF	7	6	5	4	3	2	1.8	MNGSM
ALT (3° APCH PATH)	3900	3700	3380	3060	2750	2430	2110	1790	1470	1150	1090	



CATEGORY	A	B	C	D
LNAV		1090(623-3.4)		NOT APPLICABLE
CIRCLING *	1320(853-2.4)		1420(953-4.0)	
ALTERNATE	(1353-4.4)		(1453-6.0)	

- NOTES**
- MAX IAS:  
INITIAL :210KT
  - NO CIRCLING IN SECTOR SOUTH EAST OF RWY 18/36 AND 05/23.
  - COLOUR: SEE SPEC NOTES.

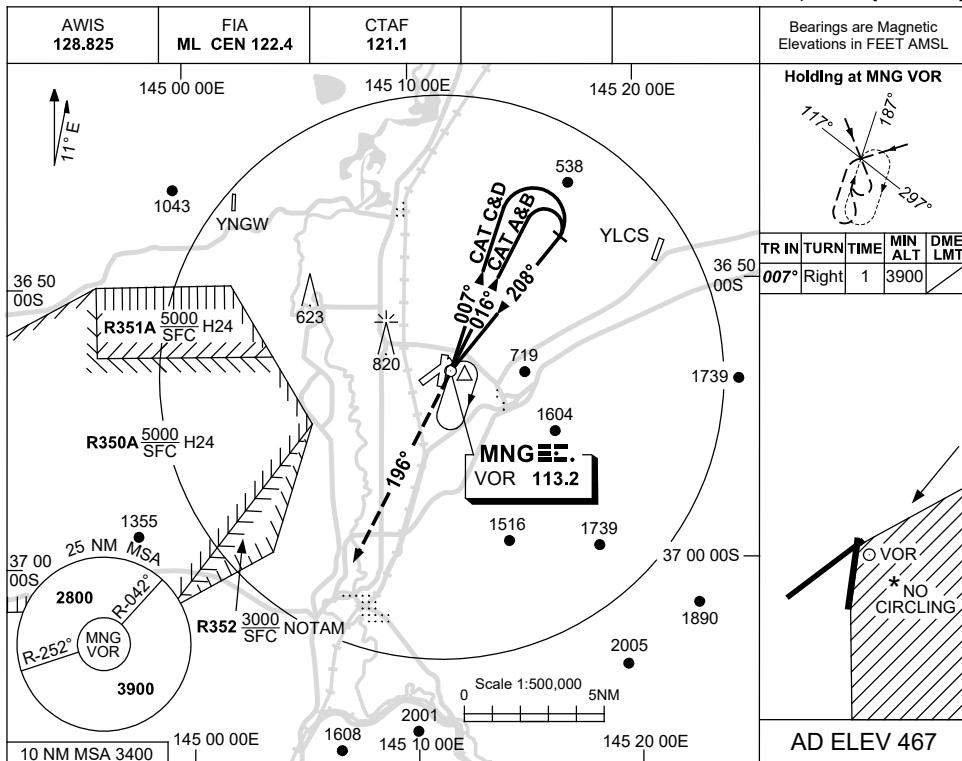
Changes: D366 REMOVED, Editorial.

MNGGN03-177

USE QNH

VOR RWY 23  
MANGALORE, VIC (YMNG)

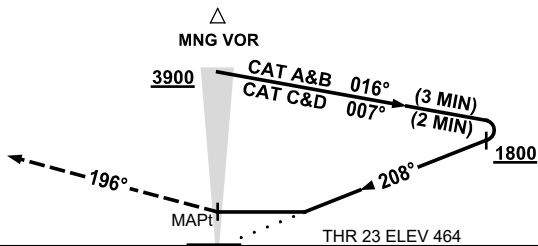
21 MAR 2024



DME DIST					NOT APPLICABLE				
ALT									

**MISSED APPROACH:**

TURN LEFT,  
TRACK 196°  
CLIMB TO 3900ft.



**NOTES**

1. MAX IAS:  
HOLDING : 180KT.  
INITIAL :  
CAT C&D : 180KT.
- \*2. NO CIRCLING IN  
SECTOR EAST OF RWY  
18/36 AND STH EAST  
OF RWY 05/23.
3. SEPARATION FM  
R350A/B & R352 NOT  
ASSURED WHEN  
HLDG OR IN THE  
MISSED APCH

CATEGORY	A	B	C	D
S-I VOR	1120 (653-3.7)			
CIRCLING *	1320 (853-2.4)	1420 (953-4.0)	1420 (953-5.0)	
ALTERNATE	(1353-4.4)	(1453-6.0)	(1453-7.0)	

Changes: NOTES.

MNGV001-178