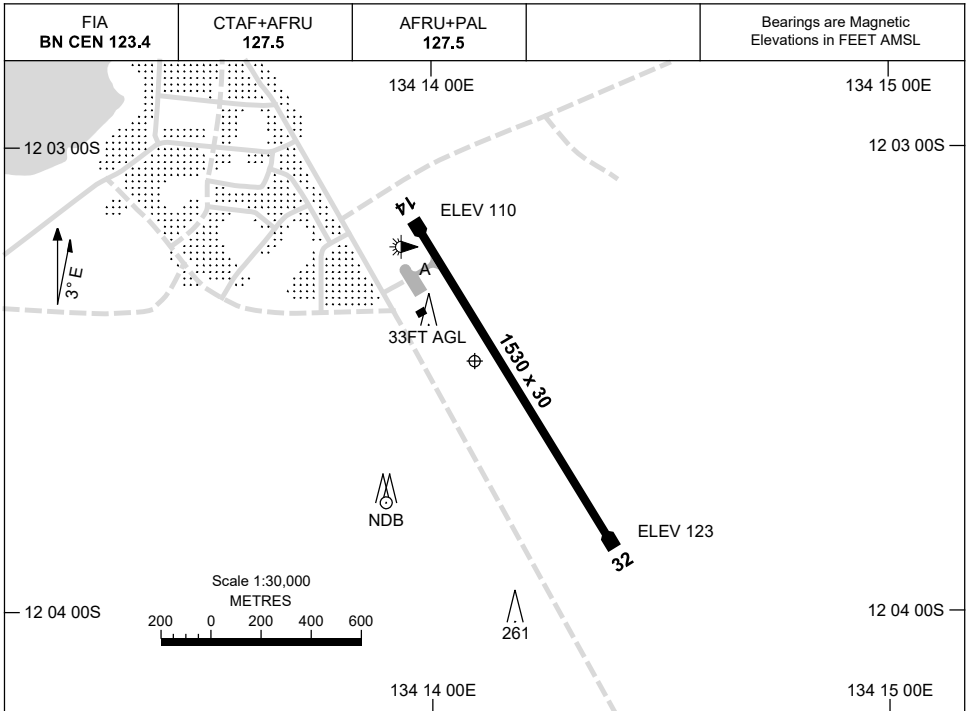


15 AUG 2019

AD ELEV 123  
12 03 22S 134 14 03E

**AERODROME CHART**  
**MANINGRIDA, NT (YMGD)**



	<b>AERODROME LIGHTING</b>
<b>RWY</b>	TAXIWAY : BLUE EDGE RL : AFRU+PAL 127.5
<b>14</b> <sup>145</sup> <b>325</b> <b>32</b>	LIRL LIRL

**NOTES**

AWIS (PHONE) 08 7922 2509

Changes: AWIS PHONE, COORD FORMAT.

MGDAD01-160

# GNSS ARRIVAL PROCEDURES MANINGRIDA, NT (YMGD)

**15 AUG 2019**

FIA <b>BN CEN 123.4</b>	CTAF+AFRU <b>127.5</b>	AFRU+PAL <b>127.5</b>			Bearings are Magnetic Elevations in FEET AMSL
----------------------------	---------------------------	--------------------------	--	--	--

25 NM MSA

2000

MGD  
NDB

**REFERENCE WAYPOINT MGD NDB**  
AWIS (PHONE) 08 7922 2509

10 NM MSA 1500

AD ELEV 123

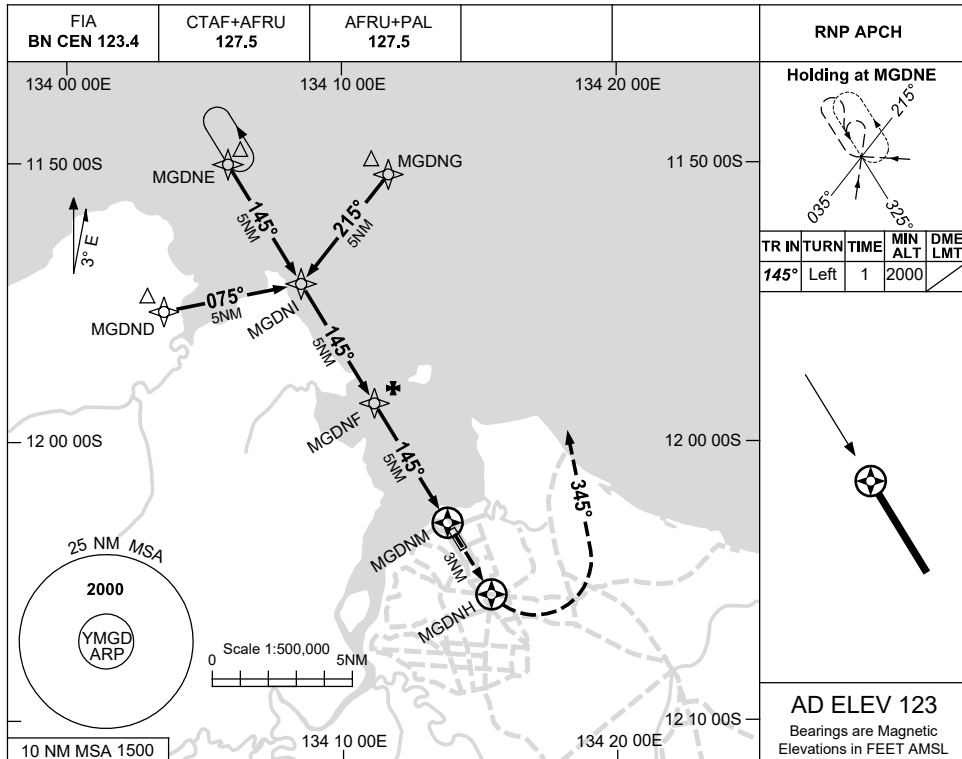
<b>ALL ROUTES TO MGD NDB</b>											<p><b>MISSED APPROACH:</b> CLIMB ON TRACK TO 2000FT.</p>							
	NM TO MGD NDB	25	15	10	5	4	0											
<b>CIRCLING MINIMA</b>			A,B: 730-2.4			C: 830-4.0			D: N/A									
NM TO MGD NDB	6.6	6	5	4	3	2.9	2.6											
ALT (3° APCH PATH)	2000	1820	1500	1180	870	830	730											

USE QNH

RNP RWY 14

MANINGRIDA, NT (YMGD)

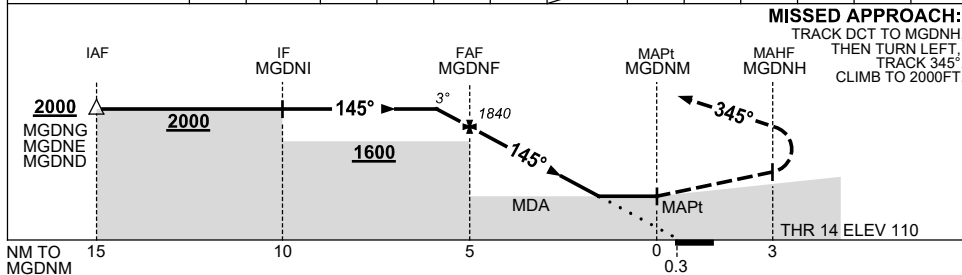
8 SEP 2022



AD ELEV 123

Bearings are Magnetic  
Elevations in FEET AMSL

NM TO NEXT WPT	0.5	MGDNF	4	3	2	1.1	MGDNM						
ALT (3° APCH PATH)	2000	1840	1520	1200	880	610							



**MISSED APPROACH:**  
TRACK DCT TO MGDNH,  
THEN TURN LEFT,  
TRACK 345°.  
CLIMB TO 2000FT.

**NOTES**

CATEGORY	A	B	C	D
LNAV	610 (500-2.8)			NOT APPLICABLE
CIRCLING	730 (607-2.4)	830 (707-4.0)		
ALTERNATE	(1107-4.4)	(1207-6.0)		

- MAX IAS:  
INITIAL : 210KT.
- AWIS (PHONE)  
08 7922 2509

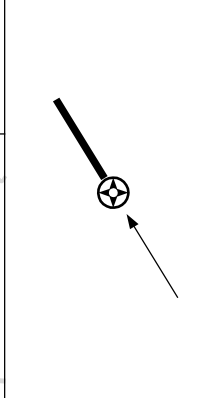
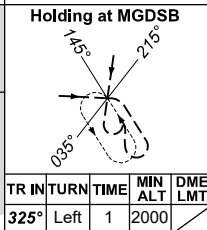
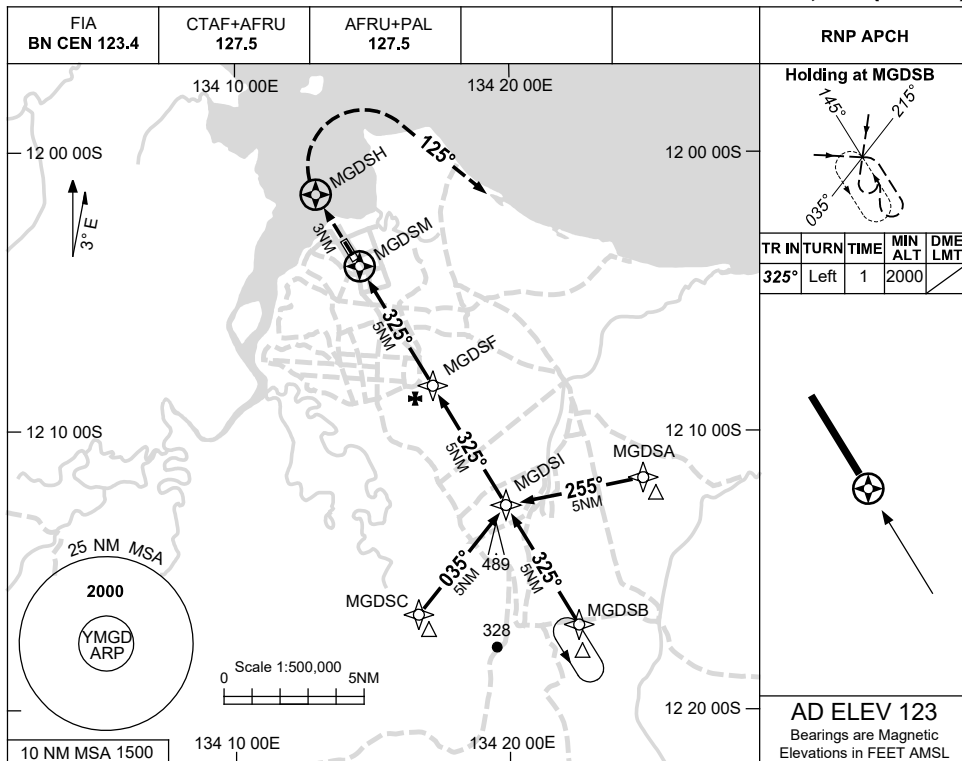
Changes: CHART TITLE, PBN SPECIFICATION BOX.

MGDGN01-172

USE QNH

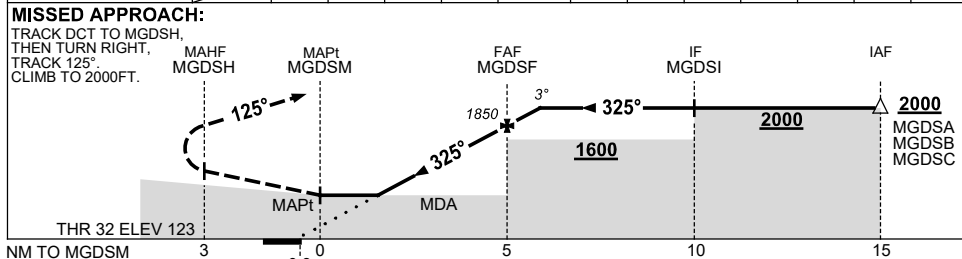
RNP RWY 32  
**MANINGRIDA, NT (YMGD)**

8 SEP 2022



**AD ELEV 123**  
 Bearings are Magnetic  
 Elevations in FEET AMSL

NM TO NEXT WPT	MGDSM	1.3	2	3	4	MGDSF	0.5				
ALT (3° APCH PATH)		680	890	1210	1530	1850	2000				



**NOTES**

CATEGORY	A	B	C	D
LNAV	680 (557-3.2)			NOT APPLICABLE
CIRCLING	730 (607-2.4)	830 (707-4.0)		
ALTERNATE	(1107-4.4)		(1207-6.0)	

- MAX IAS: INITIAL : 210KT.
- AWIS (PHONE) 08 7922 2509

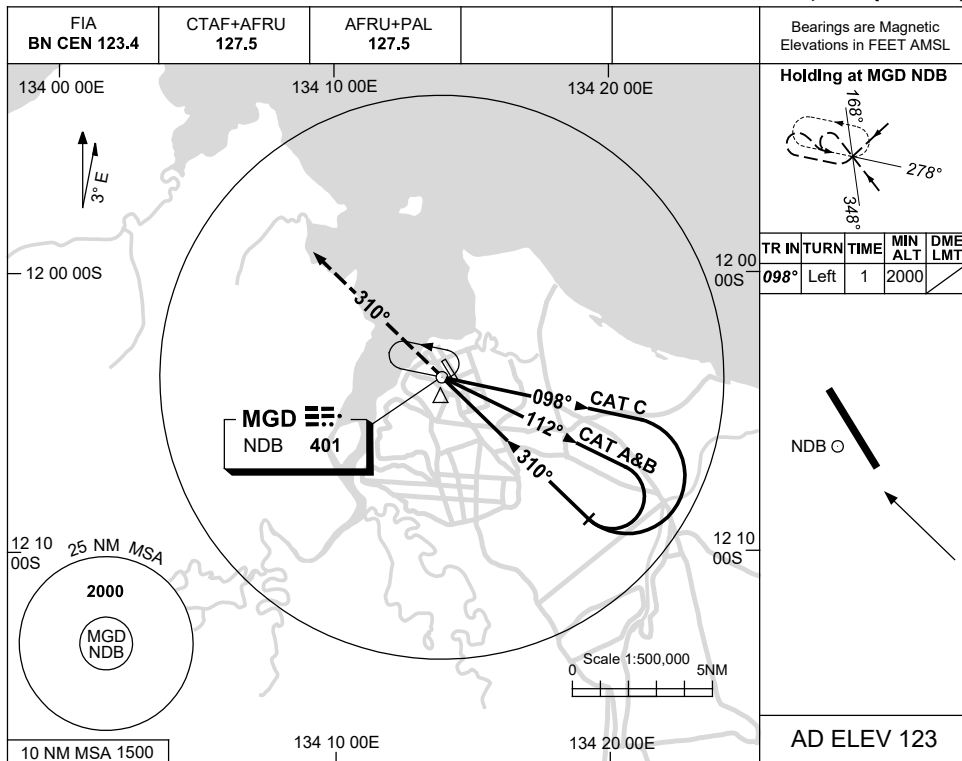
Changes: CHART TITLE, PBN SPECIFICATION BOX.

MGDGN02-172

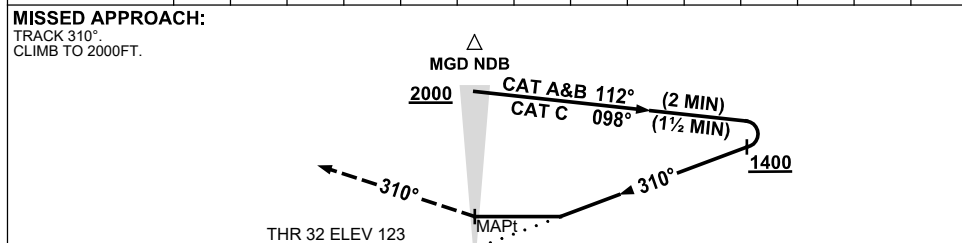
USE QNH

NDB RWY 32  
**MANINGRIDA, NT (YMGD)**

15 AUG 2019



DME DIST	NOT APPLICABLE				
ALT					



**NOTES**

CATEGORY	A	B	C	D
S-I NDB	<b>730 (607-3.4)</b>			NOT APPLICABLE
CIRCLING	<b>730 (607-2.4)</b>	<b>830 (707-4.0)</b>		
ALTERNATE	(1107-4.4)	(1207-6.0)		

1. MAX IAS:  
INITIAL : 210KT.
2. AWIS (PHONE)  
08 7922 2509

Changes: NOTE 2, COORD FORMAT.

MGDNB01-160