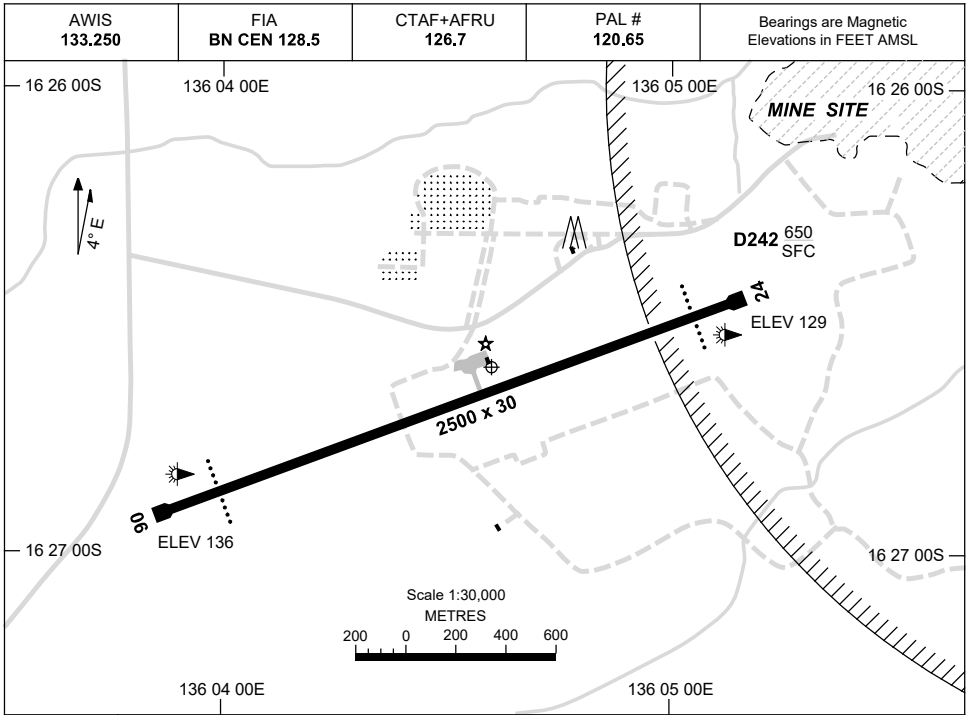


7 SEP 2023

AD ELEV 136
16 26 36S 136 04 36E

AERODROME CHART
McARTHUR RIVER MINE, NT (YMHU)



	AERODROME LIGHTING
RWY	ABN : ALTN W/G 6 SEC TAXIWAY : BLUE EDGE RL : PAL 120.65 # , SDBY (30 SEC)
06 <small>065</small>	PAPI 3.0° 49FT LIRL
<small>245</small> 24	PAPI 3.0° 49FT LIRL

NOTES

1. HJ PAL ACTIVATES PAPI ONLY.
2. FIA FREQ 128.5 AVBL CIRCUIT AREA.

Changes: NOTES.

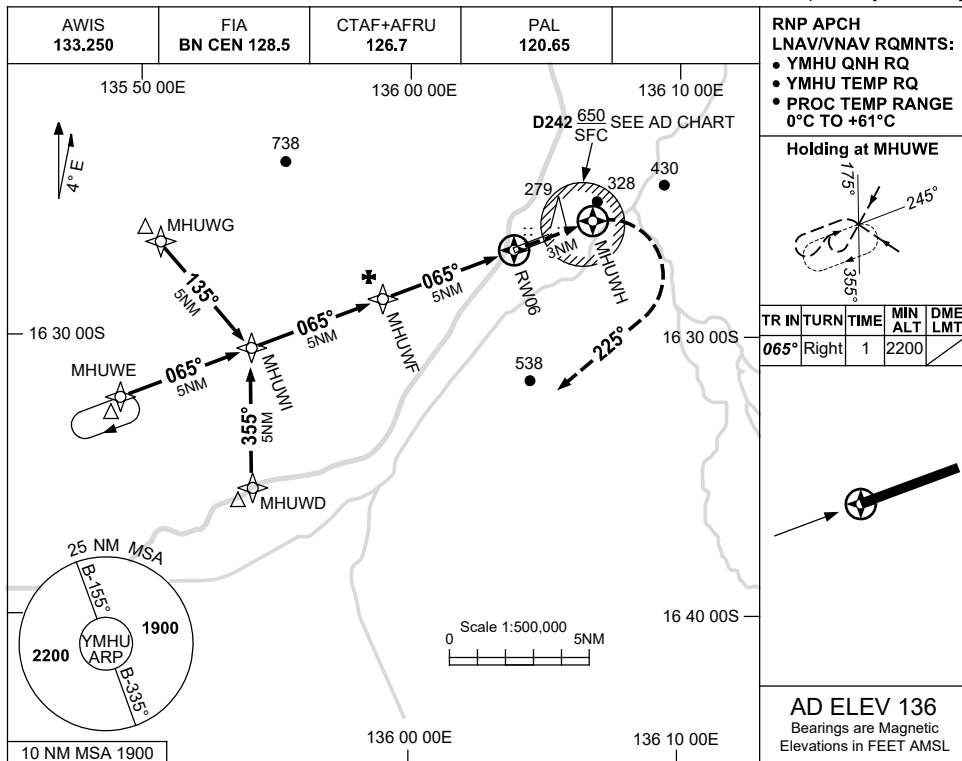
MHUAD01-176

USE QNH

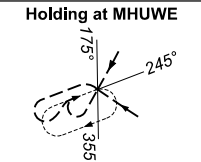
RNP RWY 06

8 SEP 2022

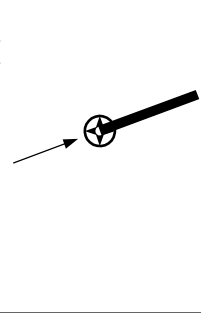
McARTHUR RIVER MINE, NT (YMHU)



RNP APCH
LNAV/VNAV RQMNTS:
• YMHU QNH RQ
• YMHU TEMP RQ
• PROC TEMP RANGE
0°C TO +61°C

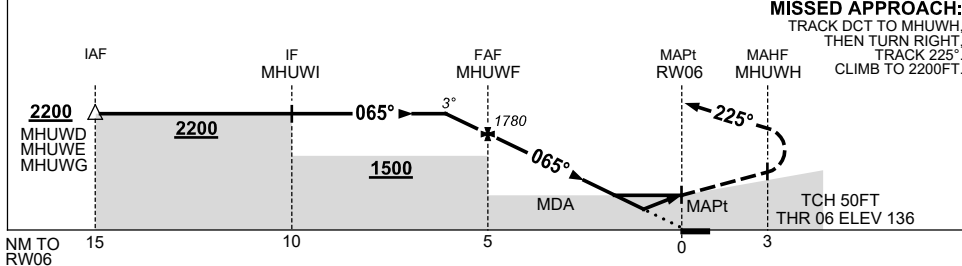


TR	IN	TURN	TIME	MIN ALT	DME LMT
065°	Right		1	2200	



AD ELEV 136
Bearings are Magnetic
Elevations in FEET AMSL

NM TO NEXT WPT	1.3	1	MHUWF	4	3	2	1.7	0.9	RW06
ALT (3° APCH PATH)	2200	2100	1780	1460	1140	820	730	470	



MISSED APPROACH:
TRACK DCT TO MHUWH,
THEN TURN RIGHT,
TRACK 225°,
CLIMB TO 2200FT.

NOTES

1. MAX IAS:
INITIAL : 230KT.

CATEGORY	A	B	C	D
LNAV/VNAV	470 (334-1.9)			NOT APPLICABLE
LNAV	730 (594-3.4)			
CIRCLING	910 (774-2.4)		1140 (1004-4.0)	
ALTERNATE	(1274-4.4)		(1504-6.0)	

Changes: CHART TITLE, PBN SPECIFICATION BOX.

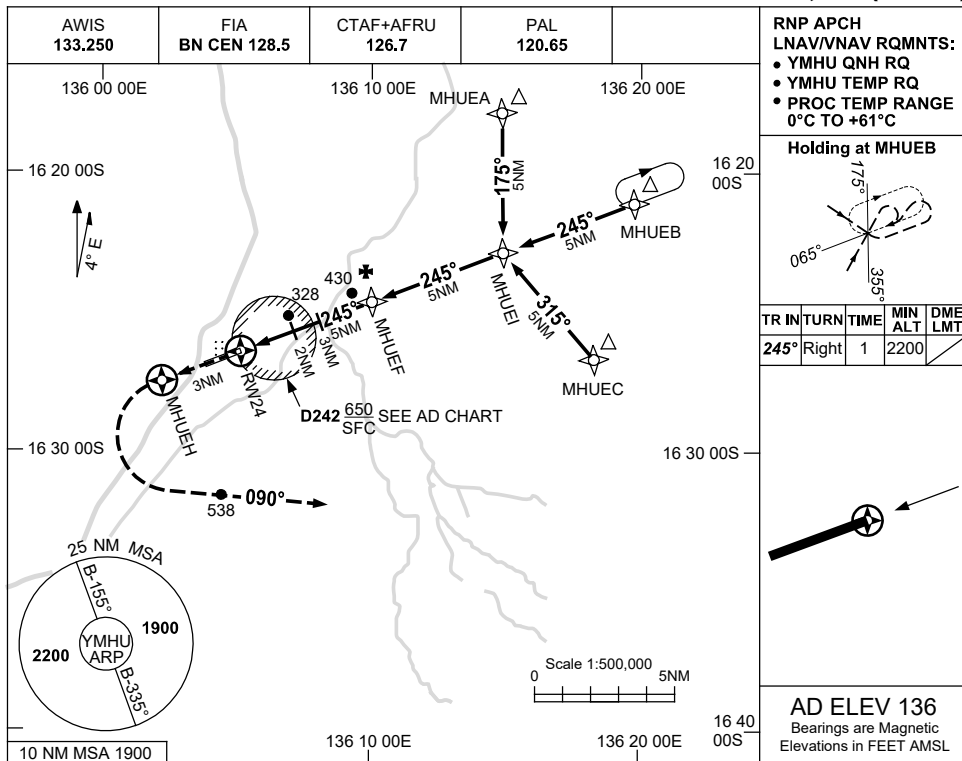
MHUGN01-172

USE QNH

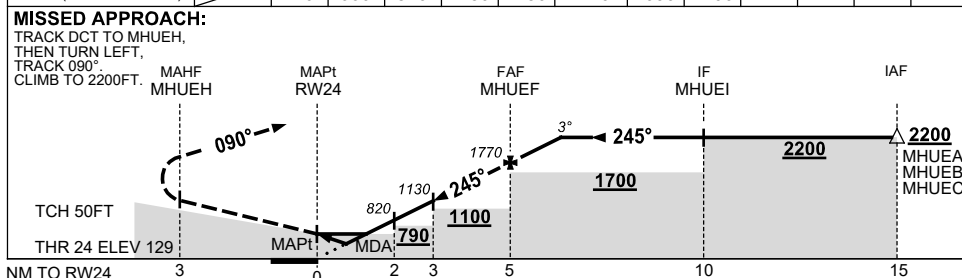
RNP RWY 24

8 SEP 2022

McARTHUR RIVER MINE, NT (YMHU)



NM TO NEXT WPT	RW24	0.9	1.5	2	3	4	MHUEF	1	1.3				
ALT (3° APCH PATH)		470	660	820	1130	1450	1770	2090	2200				



NOTES

CATEGORY	A	B	C	D
LNAV/VNAV	470 (341-1.9)			NOT APPLICABLE
LNAV	660 (524-3.0)			
CIRCLING	910 (774-2.4)		1140(1004-4.0)	
ALTERNATE	(1274-4.4)		(1504-6.0)	

1. MAX IAS:
INITIAL : 230KT.

Changes: CHART TITLE, PBN SPECIFICATION BOX.

MHUGN02-172