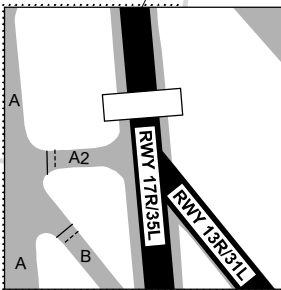
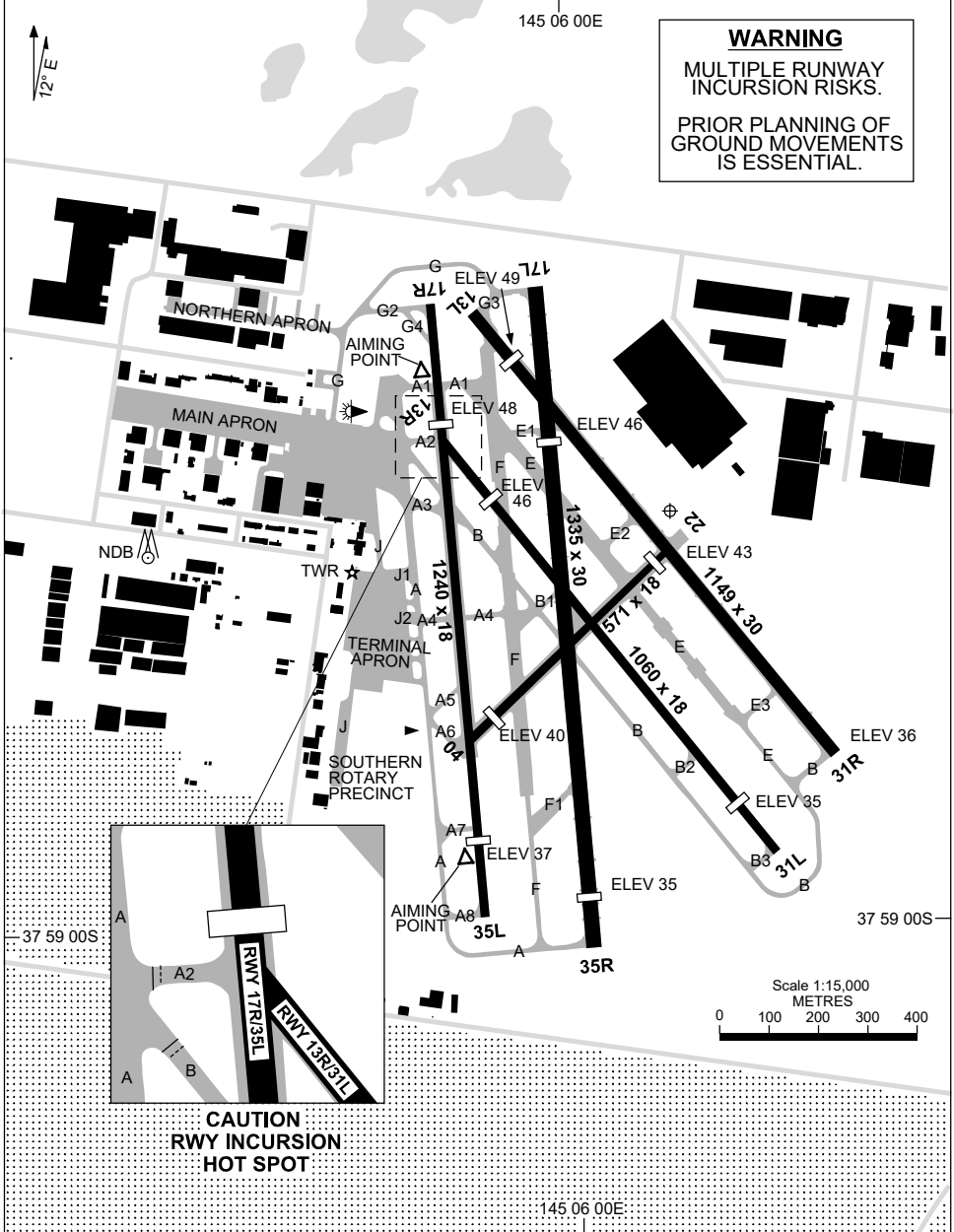


13 JUN 2024

37 58 33S 145 06 08E

MELBOURNE/MOORABBIN, VIC (YMMB)

ATIS 120.9 398	TWR 118.1 123.0	SMC 134.25	FIA (AH) ML CEN 135.7	CTAF (AH) 118.1	AWIS (AH) 120.9	Bearings are Magnetic Elevations in FEET AMSL
-------------------	--------------------	---------------	--------------------------	--------------------	--------------------	--



7 SEP 2023

AD ELEV 55
37 58 33S 145 06 08E

AERODROME CHART - Page 2
MELBOURNE/MOORABBIN, VIC (YMMB)

ATIS 120.9 398	TWR 118.1 123.0	SMC 134.25	FIA (AH) ML CEN 135.7	CTAF (AH) 118.1	AWIS (AH) 120.9	Bearings are Magnetic Elevations in FEET AMSL
-------------------	--------------------	---------------	--------------------------	--------------------	--------------------	--

--	--	--	--	--	--	--

RWY	AERODROME LIGHTING					
		ABN : FLG W 5 SEC TAXIWAY : BLUE EDGE TWY A, B, G, GREEN CENTRELINE TWY J1 TWY CL MARKERS ON TWY G AND TAXILANES ON MAIN APN RL : MAN , SDBY (15 SEC) , LGT HN RWY 13L/31R & 17L/35R ONLY				
13L ¹³⁰ <i>310</i> 31R	MIRL MIRL					
13R ¹³⁰ <i>310</i> 31L	NIL NIL					
17L ¹⁶⁴ <i>344</i> 35R	MIRL MIRL					
17R ¹⁶⁴ <i>344</i> 35L	NIL NIL					
04 ⁰³⁶ <i>216</i> 22	NIL NIL					

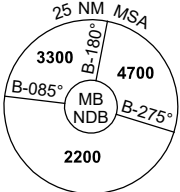
<p>NOTES</p>						
---------------------	--	--	--	--	--	--

Changes: NOTE.

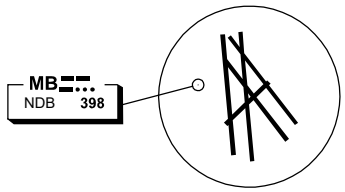
MMBAD02-176

24 MAR 2022

ATIS 120.9 398	TWR 118.1 123.0	SMC 134.25	FIA (AH) ML CEN 135.7	CTAF (AH) 118.1	AWIS (AH) 120.9	Bearings are Magnetic Elevations in FEET AMSL
-------------------	--------------------	---------------	--------------------------	--------------------	--------------------	--



REFERENCE WAYPOINT MB NDB



10 NM MSA 3700

AD ELEV 55

SECTOR A

MISSED APPROACH:
TURN RIGHT, TRACK 158°. CLIMB TO 2200FT.

NM FM NDB	25	15	12	8	5	0													
CIRCLING MINIMA	A,B: 1000-2.4			C: 1010-4.0			D: N/A												
NM TO MB NDB	6.4	6	5	4	3	2.7	2.6												
ALT (3° APCH PATH)	2200	2070	1750	1430	1110	1010	1000												

SECTOR B

MISSED APPROACH:
TURN AS APPROPRIATE, TRACK 158°. CLIMB TO 2200FT.

NM TO MB NDB	20	15	11	8	5	0													
CIRCLING MINIMA	A,B: 1000-2.4			C: 1010-4.0			D: N/A												
NM TO MB NDB	8.7	8	7	6	5	4	3	2.7	2.6										
ALT (3° APCH PATH)	2900	2700	2390	2060	1750	1430	1110	1010	1000										

MONTY TO MB

MISSED APPROACH:
TURN LEFT, TRACK 158°. CLIMB TO 2200FT.

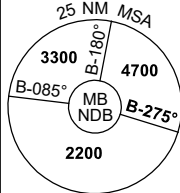
NM TO MB NDB	15	10	7	5	2	0													
CIRCLING MINIMA	A,B: 800-2.4			C: 1010-4.0			D: N/A												
NM TO MB NDB	5.5	5	4	3	2.1	1.4													
ALT (3° APCH PATH)	2100	1950	1630	1310	1010	800													

Changes: SMC FREQUENCY, Editorial.

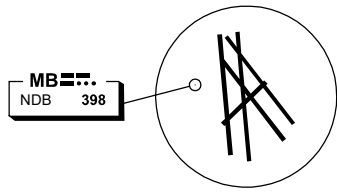
MMBDG01-170

24 MAR 2022

ATIS 120.9 398	TWR 118.1 123.0	SMC 134.25	FIA (AH) ML CEN 135.7	CTAF (AH) 118.1	AWIS (AH) 120.9	Bearings are Magnetic Elevations in FEET AMSL
-------------------	--------------------	---------------	--------------------------	--------------------	--------------------	--

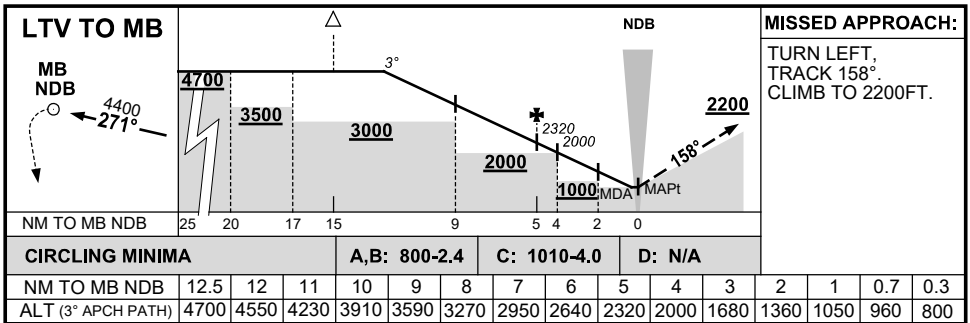
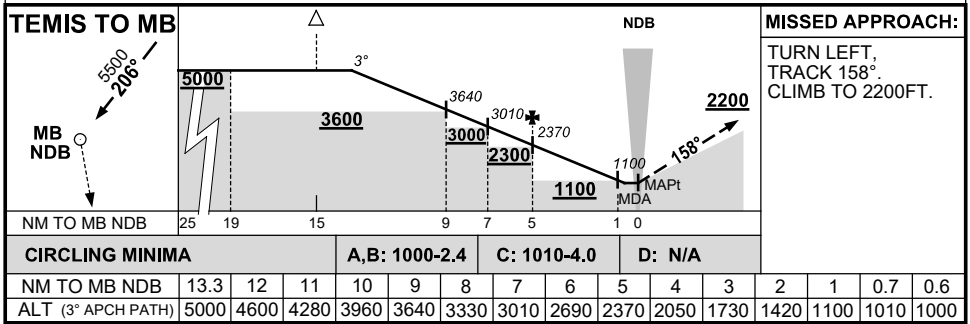


REFERENCE WAYPOINT MB NDB



10 NM MSA 3700

AD ELEV 55



Changes: SMC FREQUENCY, Editorial.

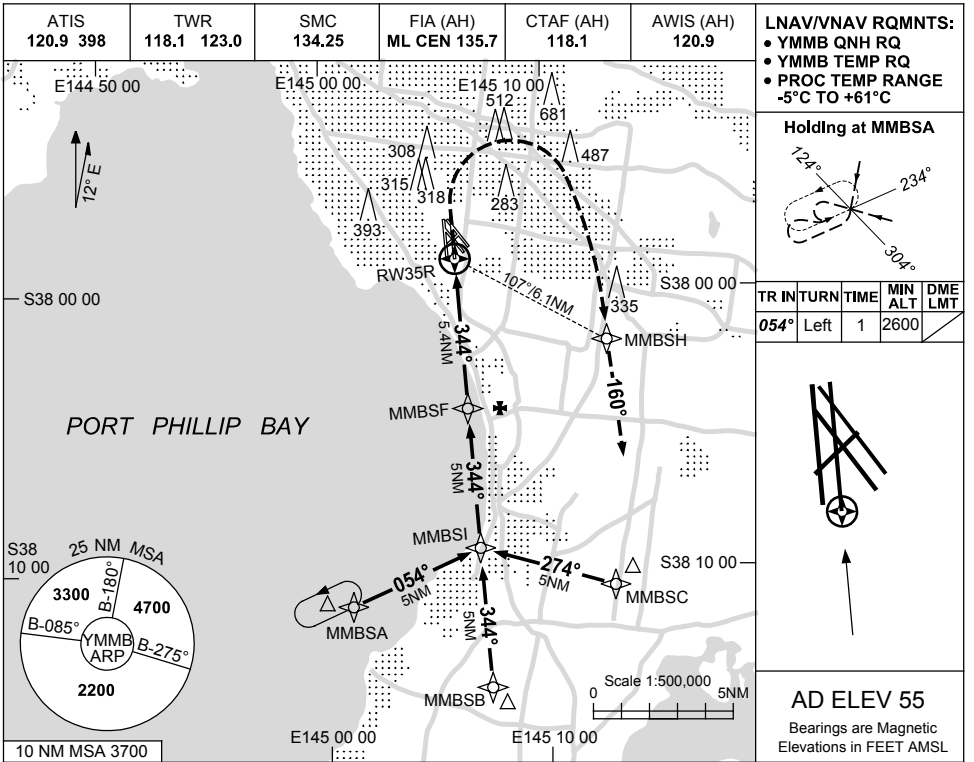
MMBDG02-170

USE QNH

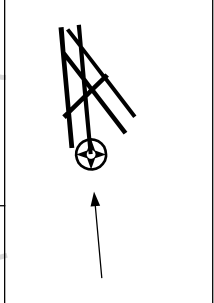
RNP RWY 35R

7 SEP 2023

MELBOURNE/MOORABBIN, VIC (YMMB)

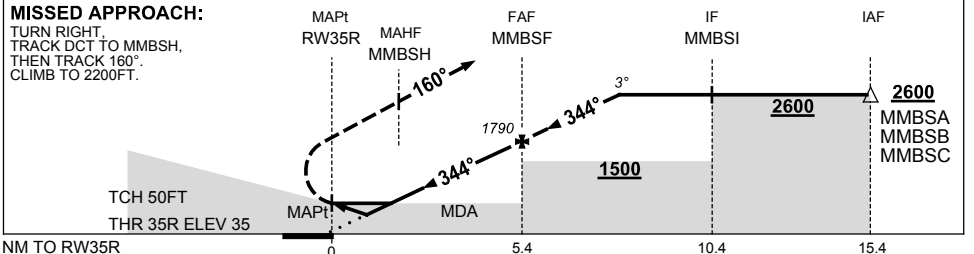


TR IN	TURN	TIME	MIN ALT	DME LMT
054°	Left	1	2600	



AD ELEV 55
Bearings are Magnetic
Elevations in FEET AMSL

NM TO NEXT WPT	RW35R	1.2	1.5	2	3	4	5	MMBSF	1	2	2.5		
ALT (3° APCH PATH)		460	550	720	1040	1360	1680	1790	2110	2430	2600		



NOTES

CATEGORY	A	B	C	D
LNAV/VNAV		460 (425-2.4)		NOT APPLICABLE
LNAV		550 (515-2.9)		
CIRCLING	720 (665-2.4)		1010 (955-4.0)	
ALTERNATE	(1165-4.4)		(1455-6.0)	

1. MAX IAS :
HOLDING : 210KT.
INITIAL : 210KT.

Changes: Editorial.

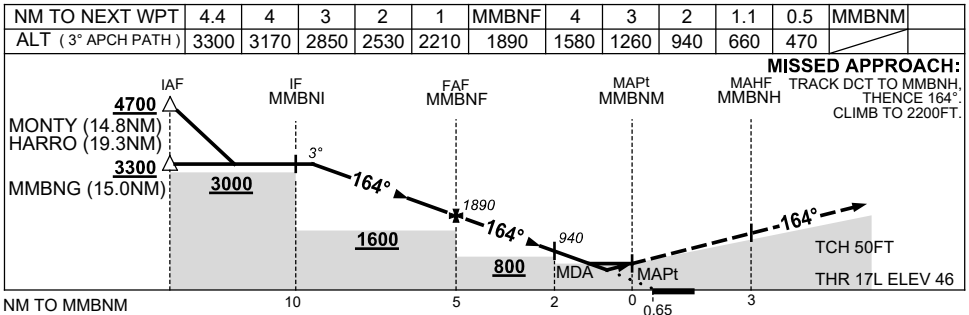
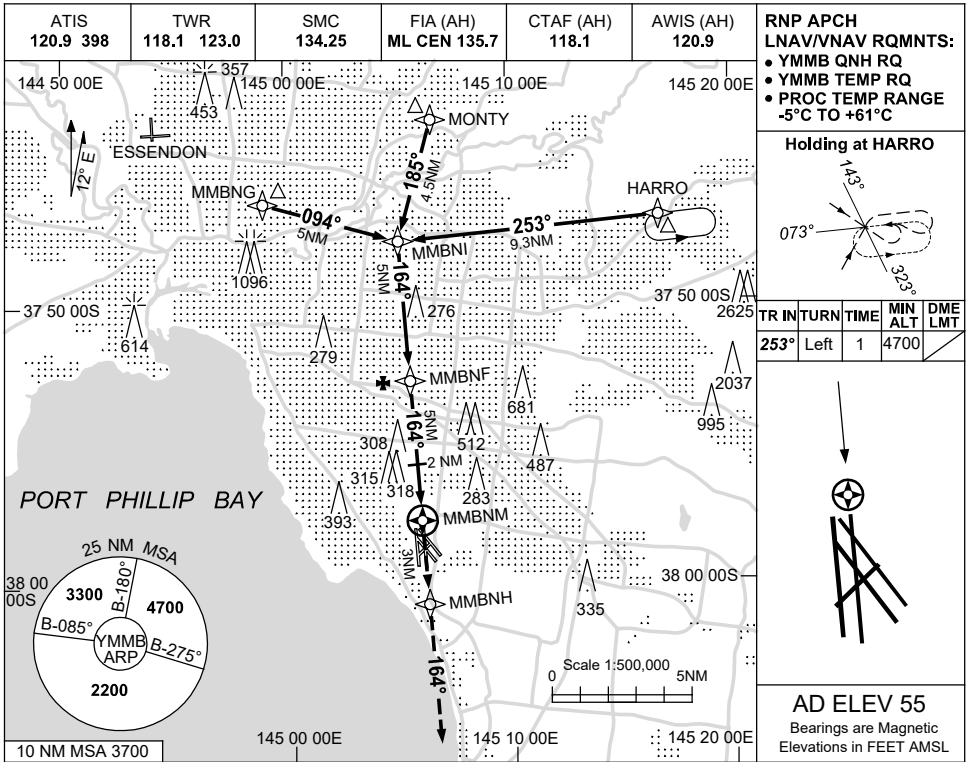
MMBGN01-176

USE QNH

RNP Rwy 17L

24 MAR 2022

MELBOURNE/MOORABBIN, VIC (YMMB)



NOTES

CATEGORY	A	B	C	D
LNAV/VNAV		470 (424-2.4)		NOT APPLICABLE
LNAV		660 (614-3.5)		
CIRCLING	720 (665-2.4)		1010 (955-4.0)	
ALTERNATE	(1165-4.4)		(1455-6.0)	

1. MAX IAS:
INITIAL : 210KT.
2. PROCEDURE LEAVES AND RE-ENTERS CONTROLLED AIRSPACE IN THE FINAL SEGMENT.
3. PROCEDURE NOT AVBL FOR TRAINING.

Changes: SMC FREQUENCY.

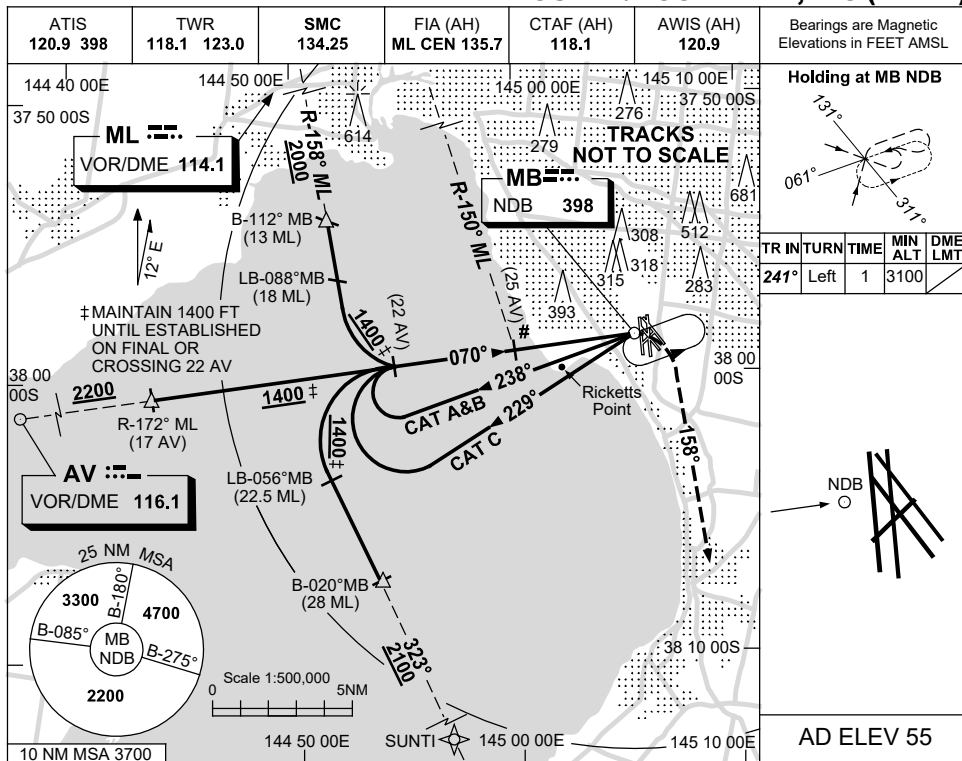
MMBGN02-170

USE QNH

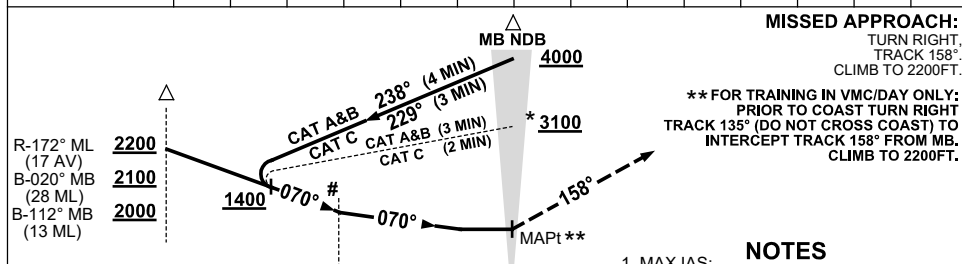
NDB-A

15 JUN 2023

MELBOURNE/MOORABBIN, VIC (YMMB)



DME DIST	NOT APPLICABLE				
ALT					



NM TO MB NDB	5	0			
NM FM AV DME	25				

CATEGORY	A	B	C
CIRCLING	720 (665-2.4)	1010 (955-4.0)	
ALTERNATE	(1165-4.4)	(1455-6.0)	

- NOTES**
- MAX IAS:
INITIAL : CAT A&B 140KT.
CAT C 180KT.
 - ALTERNATIVE PROC REQUIRES ATC APV.
 - IN VMC, ALL ACFT MUST BE BLW 800FT AS SOON AS POSSIBLE. (VOR or DME EQUIPPED ACFT BY R-150° ML or 25 DME AV).
 - NAP - IF VISUAL BLW 1000FT BEFORE CROSSING COAST & LDG YMMB, TR S OF RICKETTS POINT TO JOIN CCT.
 - AV - MB TRACK CONFLICTS WITH YMPC RNP RWY 35 NEAR 17AV.

Changes: REMOVE PLUME SYMBOL.

MMBNB01-175