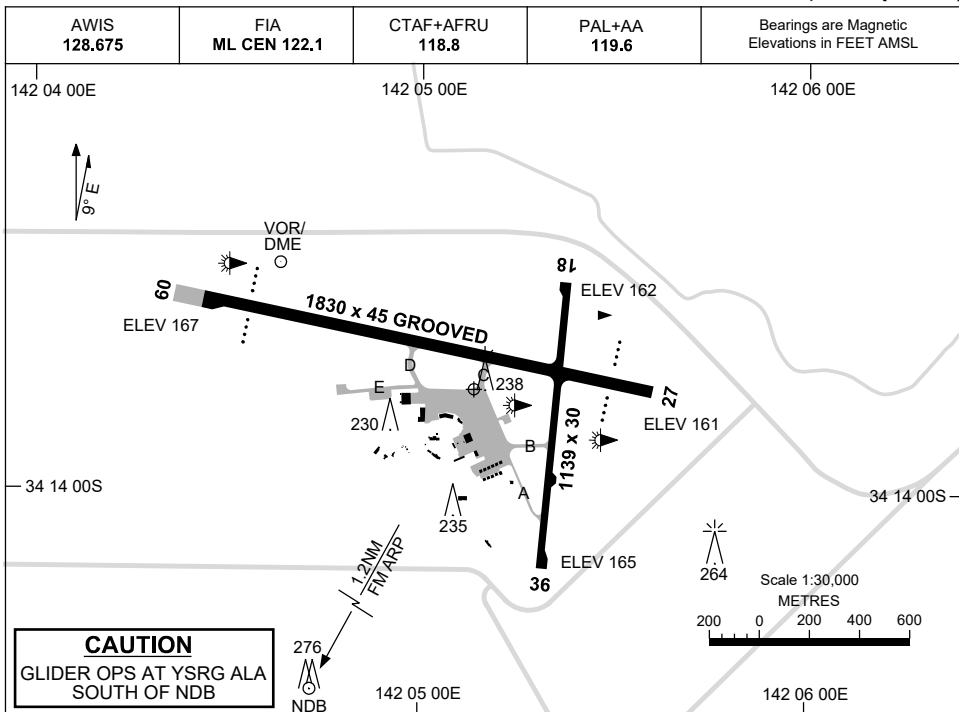


5 SEP 2024

AD ELEV 167  
34 13 45S 142 05 08E

AERODROME CHART  
**MILDURA, VIC (YMIA)**



AERODROME LIGHTING	
<b>RWY</b>	TAXIWAY : BLUE EDGE ON TWY C AND D RL : PAL+AA 119.6 , SDBY (15 SEC)
<b>09</b> <small>092</small>	PAPI 3.0° 53FT LIRL
<small>272</small> <b>27</b>	PAPI 3.0° 48FT LIRL
<b>18</b> <small>176</small>	LIRL
<small>356</small> <b>36</b>	LIRL

**NOTES**

- AWIS RQ THREE-ONE SECOND TRANSMIT PULSES TO ACTIVATE.
- PAL+AA RQ THREE PULSES OF APRX ONE SEC DURATION WI FIVE SEC TO ACTIVATE.

**CAUTION:**

GLIDING OPS AT SUNRAYSIA (YSRG) ALA HJ JF AND NOTAM FROM GRASS AIRSTRIP 2NM SSW OF AD. WIRE LAUNCHING. GLIDERS MONITOR CTAF.

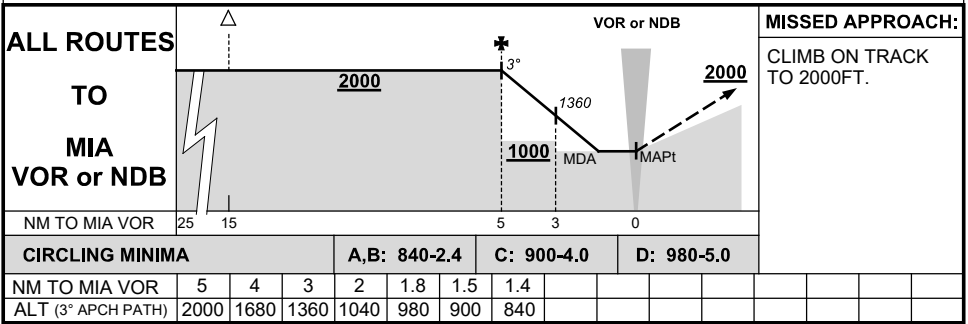
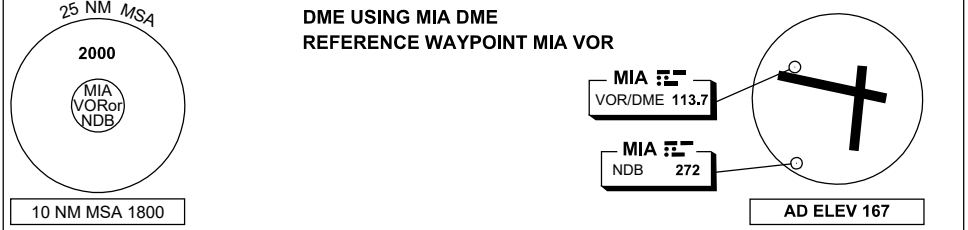
Changes: AT VASIS REPLACED WITH PAPI, SDBY SWITCHOVER TIME, IW1, Editorial.

MIAAD01-180

# DME or GNSS ARRIVAL PROCEDURES MILDURA, VIC (YMIA)

24 MAR 2022

AWIS 128.675	FIA ML CEN 122.1	CTAF+AFRU 118.8	PAL+AA 119.6		Bearings are Magnetic Elevations in FEET AMSL
-----------------	---------------------	--------------------	-----------------	--	--------------------------------------------------

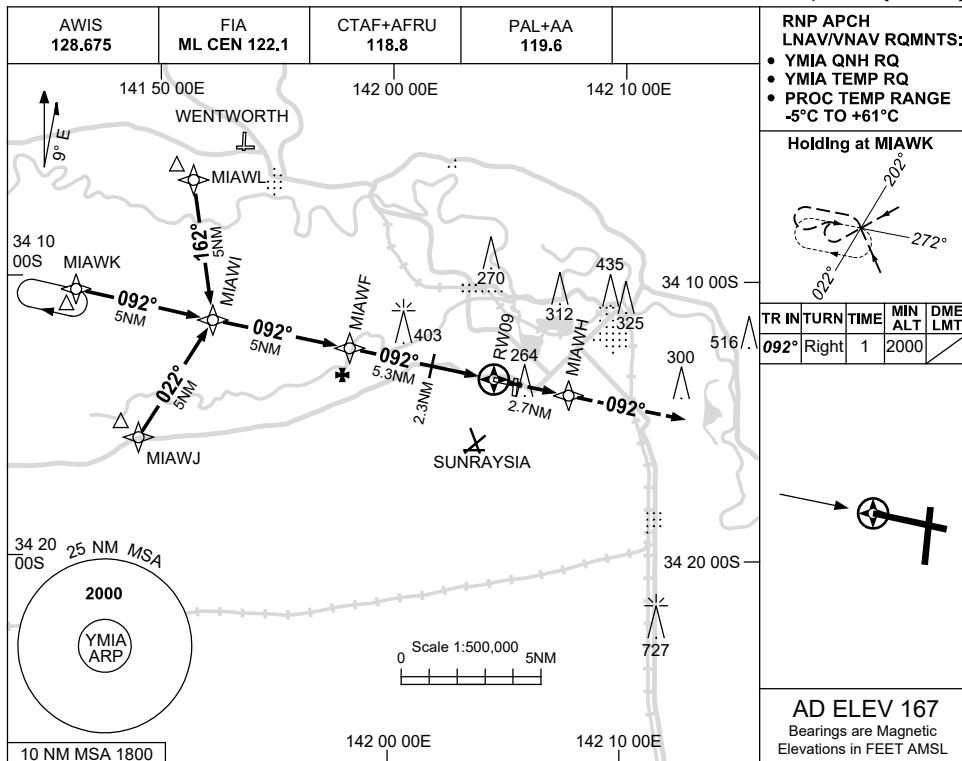


Changes: PAL+AA.

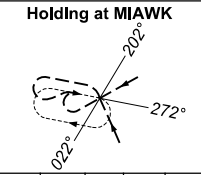
USE QNH

RNP RWY 09  
MILDURA, VIC (YMIA)

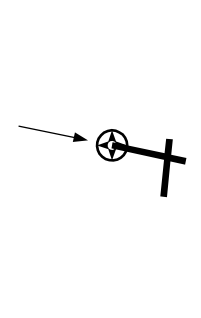
15 JUN 2023



RNP APCH  
LNAV/VNAV RQMTS:  
• YMIA QNH RQ  
• YMIA TEMP RQ  
• PROC TEMP RANGE  
-5°C TO +61°C

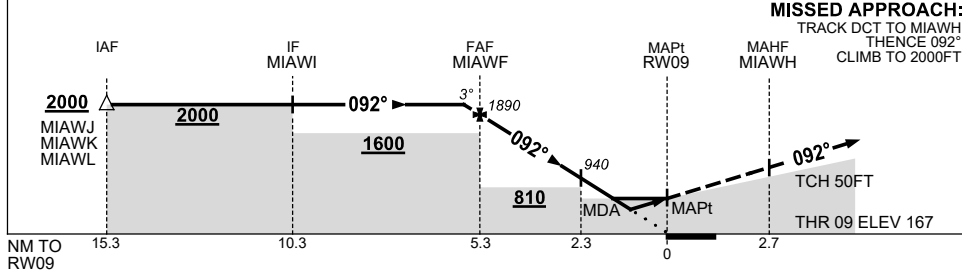


TR	TURN	TIME	MIN ALT	DME LMT
092°	Right	1	2000	



AD ELEV 167  
Bearings are Magnetic  
Elevations in FEET AMSL

NM TO NEXT WPT	0.3	MIAWF	4	3	2.3	1.4	0.8	RW09
ALT (3° APCH PATH)	2000	1890	1490	1170	940	660	480	



MISSED APPROACH:  
TRACK DCT TO MIAWH,  
THENCE 092°  
CLIMB TO 2000FT.

TCH 50FT  
THR 09 ELEV 167

CATEGORY	A	B	C	D
LNAV/VNAV		480 (313-1.7)		
LNAV		660 (493-2.8)		
CIRCLING	840 (673-2.4)		900 (733-4.0)	980 (813-5.0)
ALTERNATE	(1173-4.4)		(1233-6.0)	(1313-7.0)

- NOTES
1. MAX IAS:  
INITIAL : 210KT.
  2. CAUTION:  
GLIDER OPS 2.3NM  
SSW OF YMIA AD.

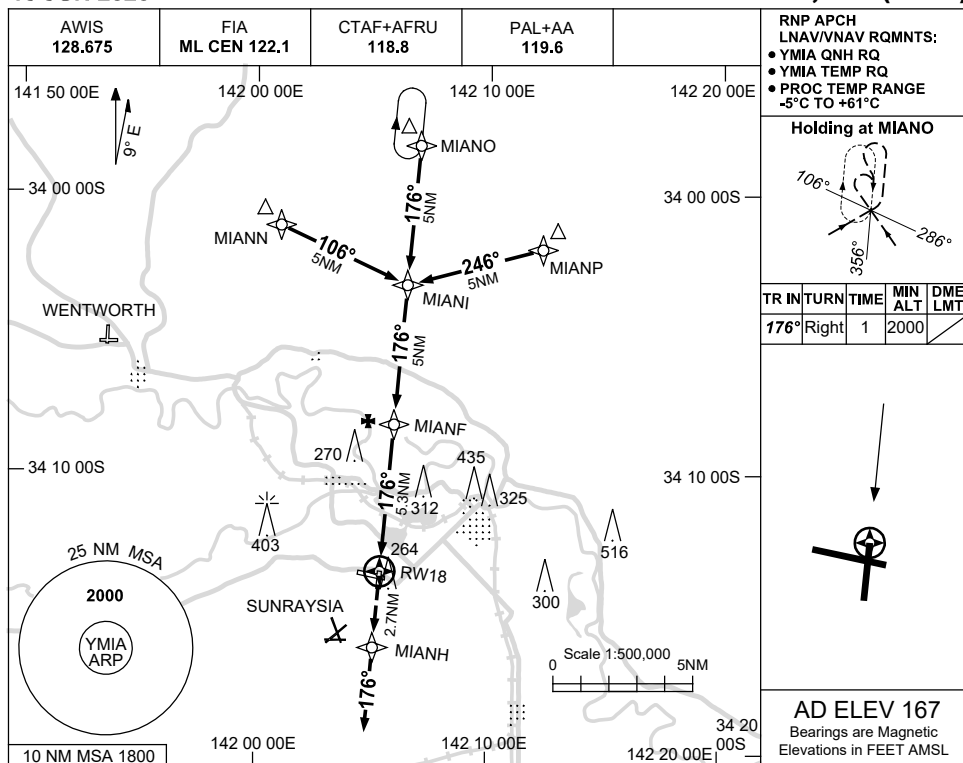
Changes: CHART TITLE, PBN SPECIFICATION BOX, Editorial.

MIAGN01-175

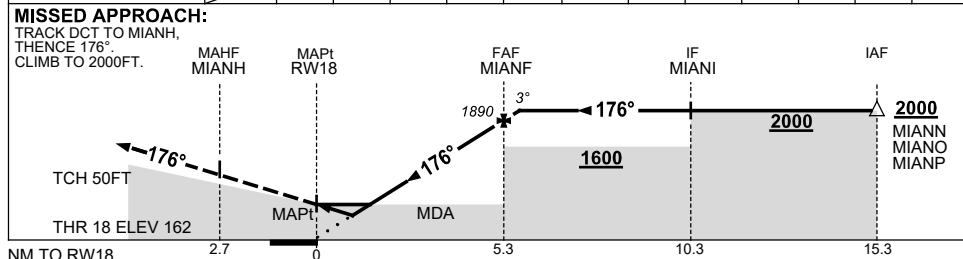
USE QNH

RNP RWY 18  
MILDURA, VIC (YMIA)

15 JUN 2023



NM TO NEXT WPT	RWY18	0.8	1.4	2	3	4	MIANF	0.3				
ALT (3° APCH PATH)		470	660	850	1170	1490	1890	2000				



**NOTES**

CATEGORY	A	B	C	D
LNAV/VNAV	470 (308-1.7)			NOT APPLICABLE
LNAV	660 (493-2.8)			
CIRCLING	840 (673-2.4)		900 (733-4.0)	980 (813-5.0)
ALTERNATE	(1173-4.4)		(1233-6.0)	(1313-7.0)

1. MAX IAS:  
INITIAL : 210KT.
2. **CAUTION:**  
GLIDER OPS 2.3NM  
SSW OF YMIA AD  
CONFLICTS WITH  
MISSED APCH AREA.

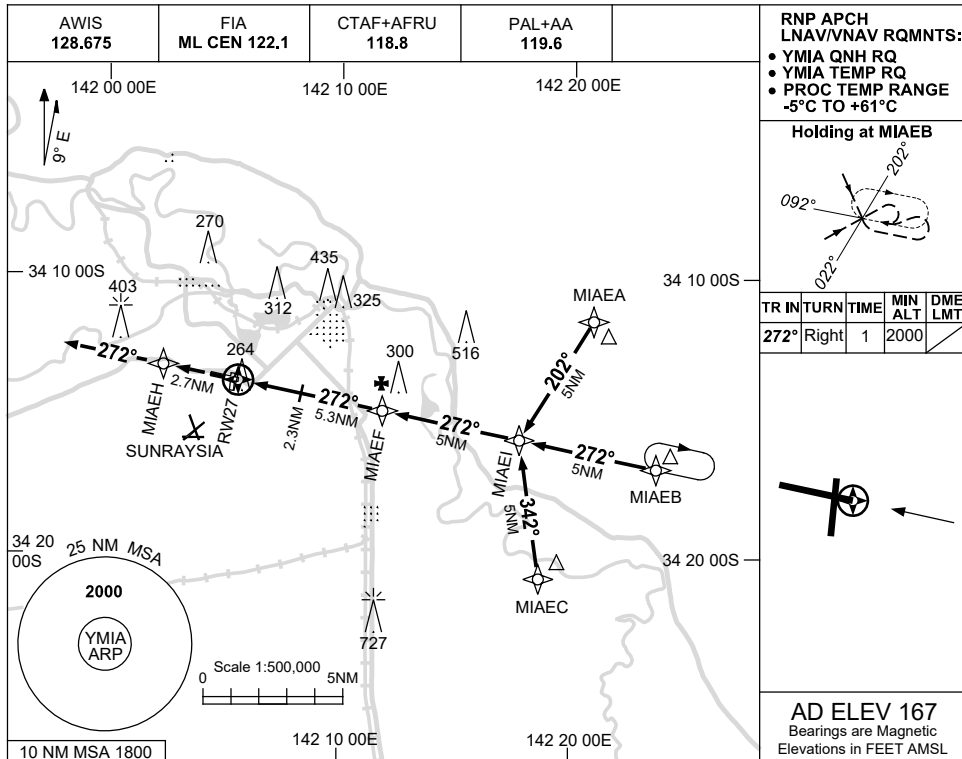
Changes: CHART TITLE, PBN SPECIFICATION BOX, Editorial.

MIAGN02-175

USE QNH

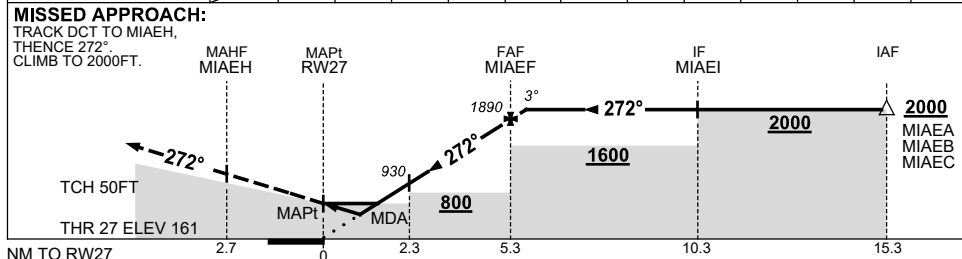
RNP RWY 27  
MILDURA, VIC (YMIA)

15 JUN 2023



**AD ELEV 167**  
Bearings are Magnetic  
Elevations in FEET AMSL

NM TO NEXT WPT	RW27	0.8	1.4	2.3	3	4	MIAEF	0.4				
ALT (3° APCH PATH)		480	660	930	1170	1480	1890	2000				



**NOTES**

CATEGORY	A	B	C	D
LNAV/VNAV		480 (319-1.8)		
LNAV		660 (493-2.8)		
CIRCLING	840 (673-2.4)		900 (733-4.0)	980 (813-5.0)
ALTERNATE	(1173-4.4)		(1233-6.0)	(1313-7.0)

1. MAX IAS:  
INITIAL : 210KT.
2. **CAUTION:**  
GLIDER OPS 2.3NM  
SSW OF YMIA AD.

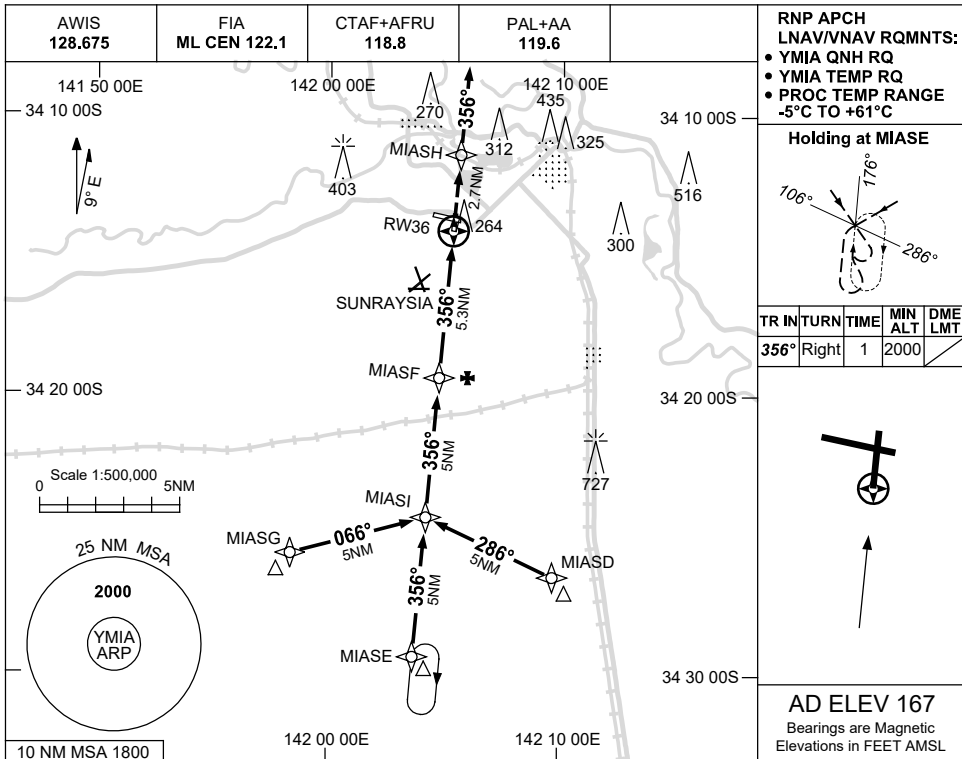
Changes: CHART TITLE, PBN SPECIFICATION BOX, Editorial.

MIAGN03-175

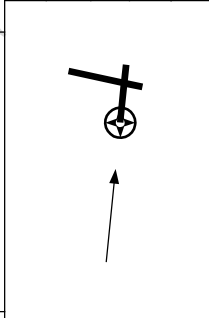
USE QNH

RNP RWY 36  
MILDURA, VIC (Y Mia)

15 JUN 2023

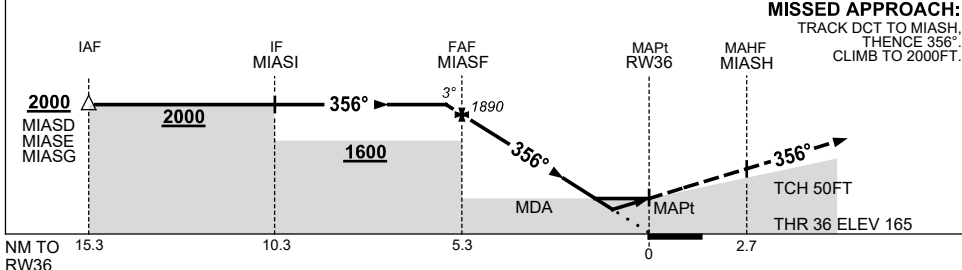


TR IN	TURN	TIME	MIN ALT	DME LMT
356°	Right	1	2000	



**AD ELEV 167**  
Bearings are Magnetic  
Elevations in FEET AMSL

NM TO NEXT WPT	0.3	MIA SF	4	3	2	1.4	0.8	RW36				
ALT (3° APCH PATH)	2000	1890	1490	1170	850	660	470					



**MISSED APPROACH:**  
TRACK DCT TO MIA SF,  
THENCE 356°,  
CLIMB TO 2000FT.

**NOTES**

1. MAX IAS:  
INITIAL : 210KT.
2. **CAUTION:**  
GLIDER OPS 2.3NM  
SSW OF Y Mia AD  
CONFLICTS WITH  
FINAL APPROACH.

CATEGORY	A	B	C	D
LNAV/VNAV		470 (305-1.7)		NOT APPLICABLE
LNAV		660 (493-2.8)		
CIRCLING	840 (673-2.4)		900 (733-4.0)	980 (813-5.0)
ALTERNATE	(1173-4.4)		(1233-6.0)	(1313-7.0)

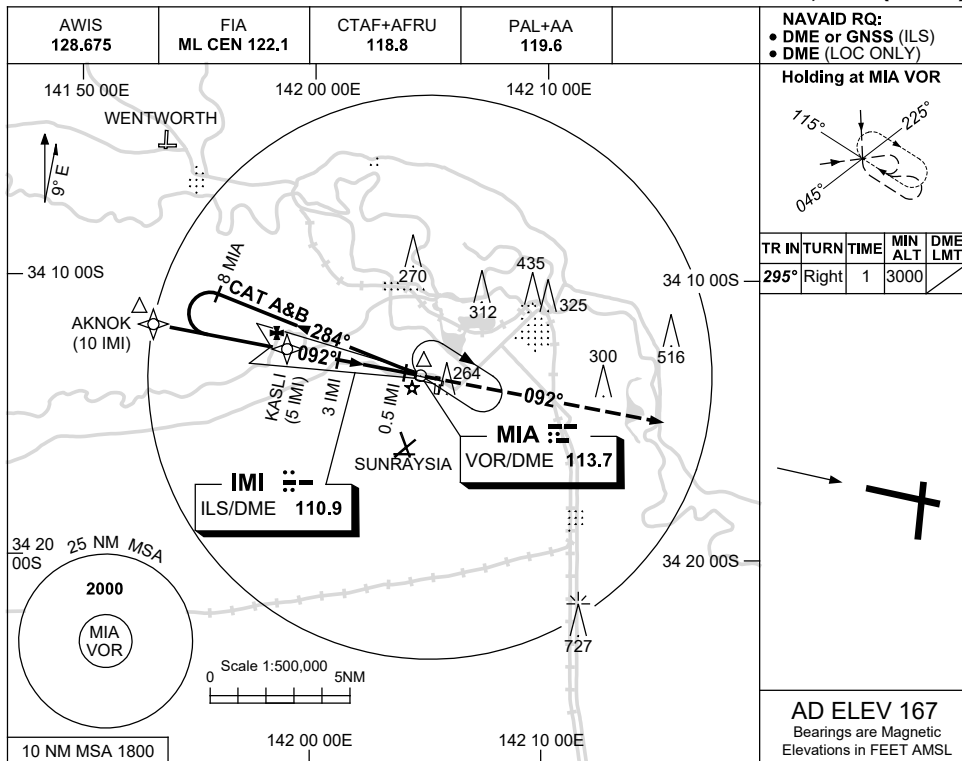
Changes: CHART TITLE, PBN SPECIFICATION BOX, Editorial.

MIAQ04-175

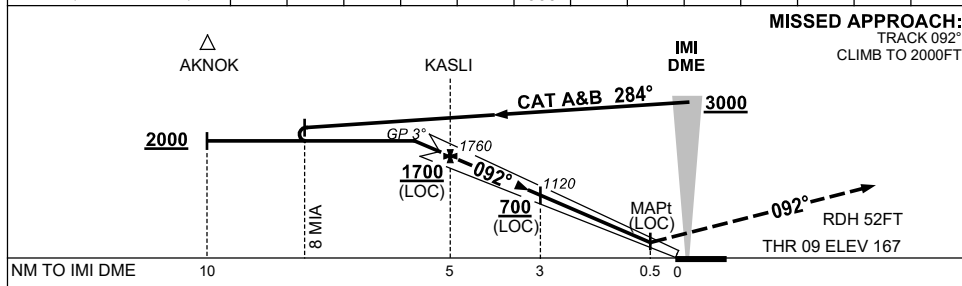
USE QNH

ILS-Z or LOC-Z RWY 09  
MILDURA, VIC (YMIA)

23 MAR 2023



NM TO IMI DME	5.8	5	4	3	2	1.6							
ALT (3° APCH PATH)	2000	1760	1440	1120	800	660							



NOTES

CATEGORY	A	B	C	D
S-I ILS	470 (303) 1.7 (VIS 1.5 WITH ACTUAL QNH)		NOT APPLICABLE	
S-I LOC	660 (493-2.8)			
CIRCLING	840 (673-2.4)			
ALTERNATE	(1173-4.4)			

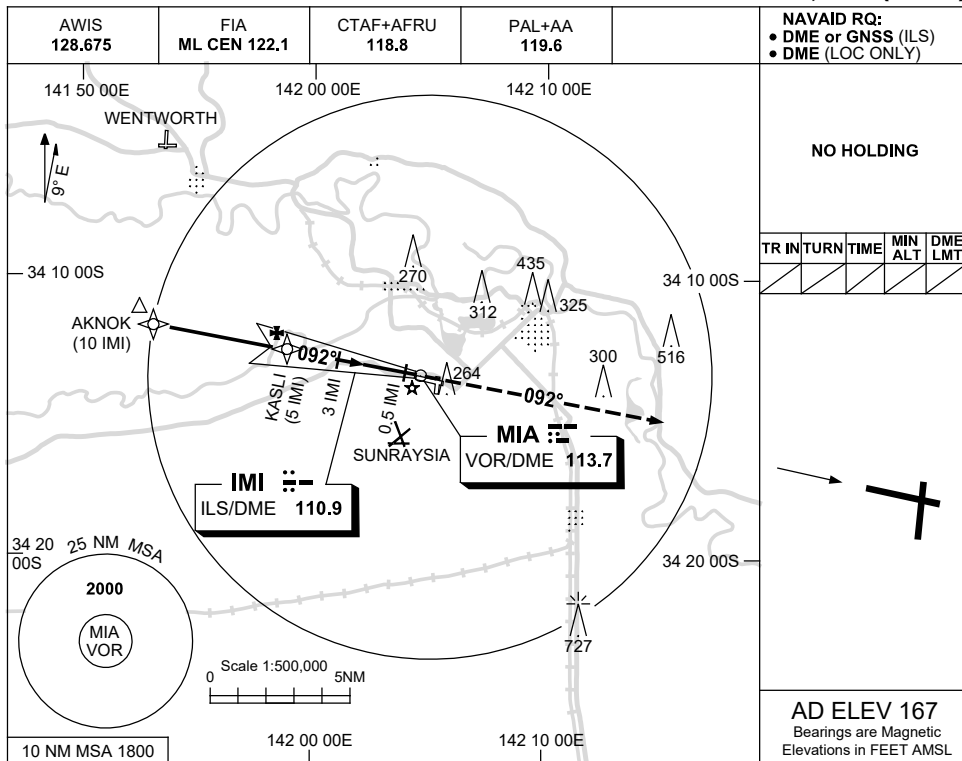
Changes: FROM SUP H113/22 AND SUNRAYSLA ALA.

MIAI01-174

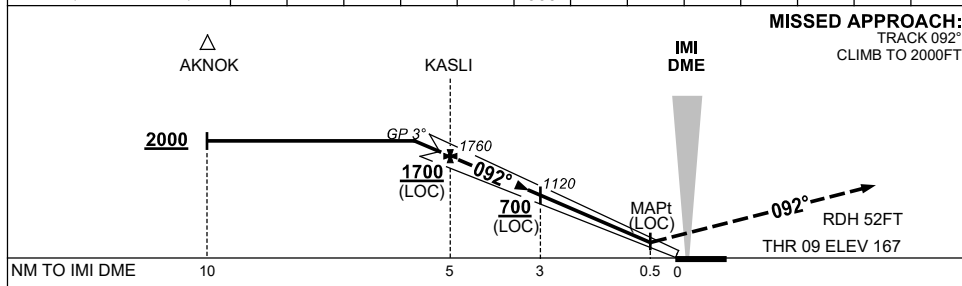
USE QNH

ILS-Y or LOC-Y RWY 09  
**MILDURA, VIC (YMIA)**

23 MAR 2023



NM TO IMI DME	5.8	5	4	3	2	1.6							
ALT (3° APCH PATH)	2000	1760	1440	1120	800	660							



NM TO IMI DME	10	5	4	3	2	1.6							
NM TO THR 09	9.8	4.8	2.8	0.3									

NOTES

CATEGORY	A	B	C	D
S-I ILS	NOT APPLICABLE		470 (303) 1.7 (VIS 1.5 WITH ACTUAL QNH)	
S-I LOC			660 (493-2.8)	
CIRCLING			900 (733-4.0)	980 (813-5.0)
ALTERNATE			(1233-6.0)	(1313-7.0)

Changes: FROM SUP H113/22 AND SUNRAYSIA ALA.

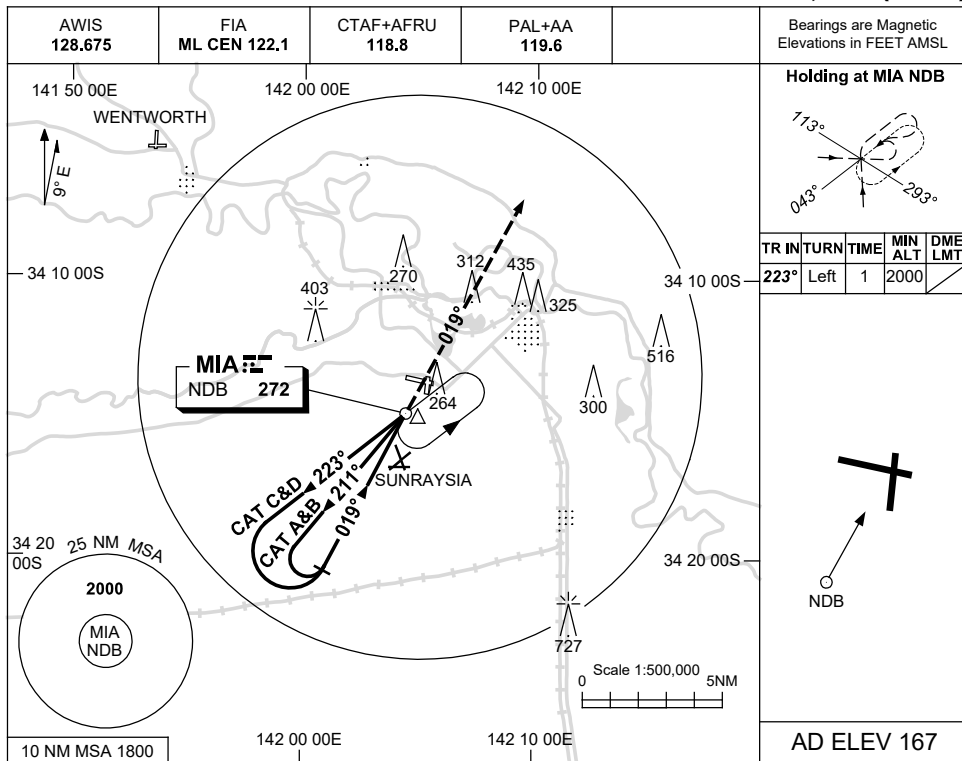
MIAI02-174



USE QNH

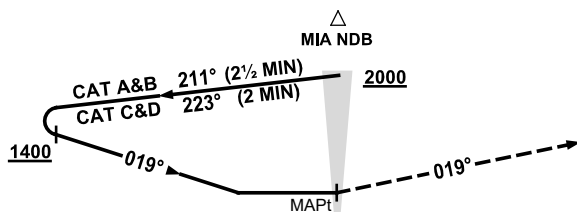
NDB-A  
MILDURA, VIC (YMIA)

23 MAR 2023



DME DIST	NOT APPLICABLE									
ALT										

**MISSED APPROACH:**  
TRACK 019°.  
CLIMB TO 2000FT.



**NOTES**

CATEGORY	A	B	C	D
CIRCLING	840 (673-2.4)	900 (733-4.0)	980 (813-5.0)	
ALTERNATE	(1173-4.4)	(1233-6.0)	(1313-7.0)	

- MAX IAS:  
INITIAL: 210KT.
- CAUTION:**  
GLIDERS OPS FM  
STRIP 2.3NM SSW  
OF YMIA AD.

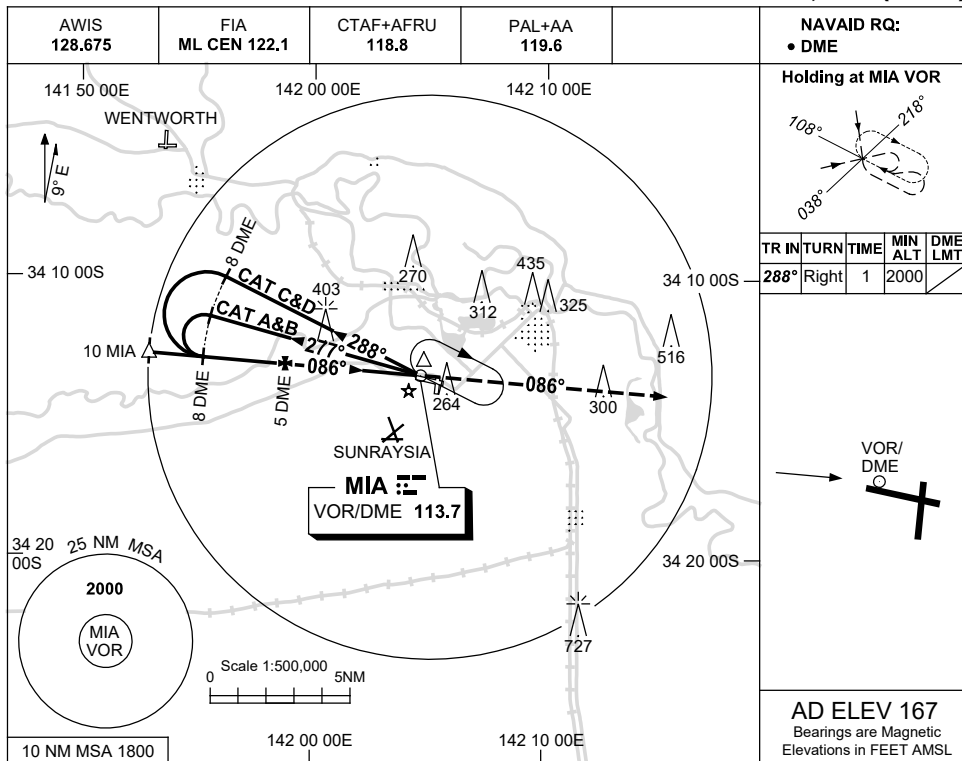
Changes: SUNRAYSIA ALA.

MIANB01-174

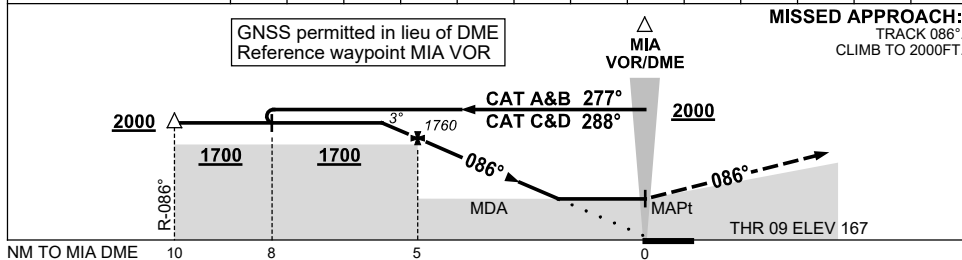
USE QNH

VOR-Z RWY 09  
MILDURA, VIC (YMIA)

23 MAR 2023



DIST TO MIA DME	5.8	5	4	3	2	1.8							
ALT (3° APCH PATH)	2000	1760	1440	1120	800	730							



CATEGORY	A	B	C	D
S-I VOR/DME	730 (563-3.2)			
CIRCLING	840 (673-2.4)	900 (733-4.0)	980 (813-5.0)	
ALTERNATE	(1173-4.4)		(1233-6.0) (1313-7.0)	

**NOTES**  
1. MAX IAS:  
INITIAL : 210KT.

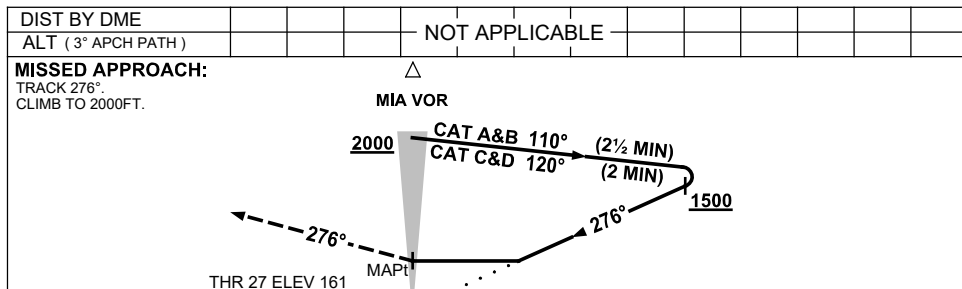
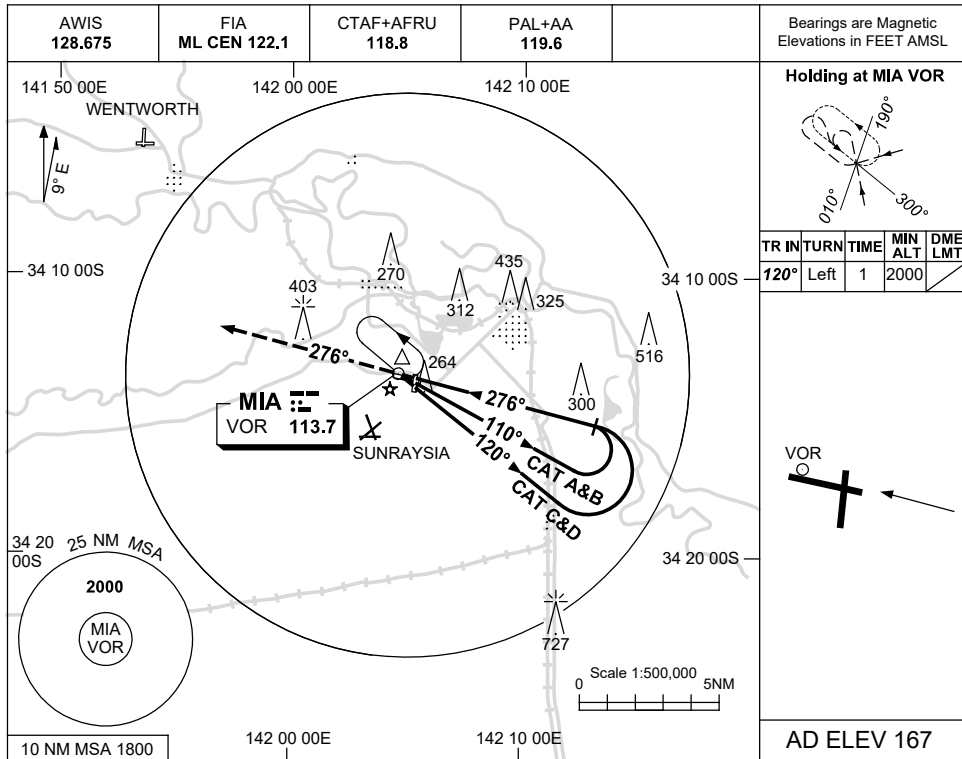
Changes: SUNRAYSLA ALA.

MIAV001-174

USE QNH

VOR-Y RWY 27  
MILDURA, VIC (YMIA)

23 MAR 2023



**NOTES**

- MAX IAS:  
INITIAL : 210KT.

CATEGORY	A	B	C	D
S-I VOR	<b>840 (673-3.8)</b>			
CIRCLING	<b>840 (673-2.4)</b>	<b>900 (733-4.0)</b>	<b>980 (813-5.0)</b>	
ALTERNATE	(1173-4.4)	(1233-6.0)	(1313-7.0)	

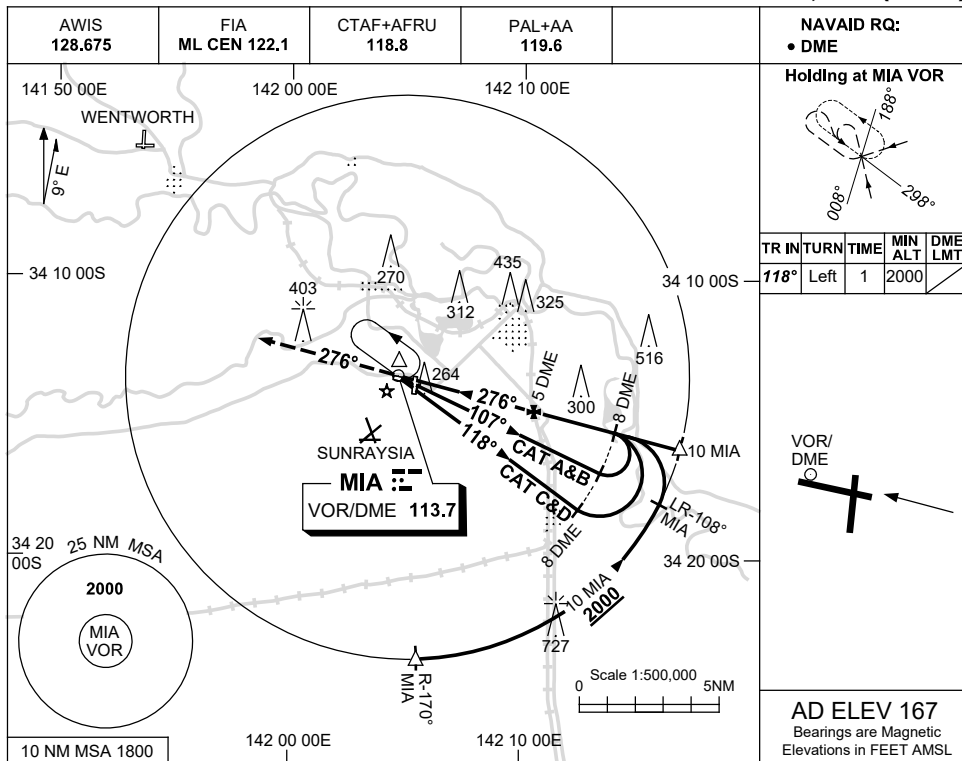
Changes: SUNRAYSLA ALA.

MIAVO02-174

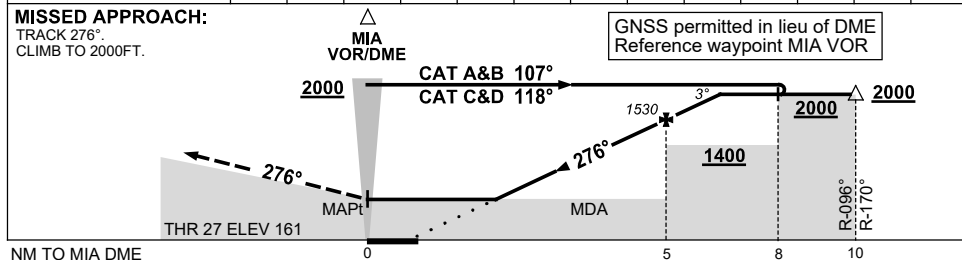
USE QNH

VOR-Z RWY 27  
MILDURA, VIC (YMIA)

23 MAR 2023



DIST TO MIA DME	2.3	3	4	5	6	6.5				
ALT (3° APCH PATH)	660	900	1220	1530	1850	2000				



**NOTES**

CATEGORY	A	B	C	D
S-I VOR/DME	<b>660 (493-2.8)</b>			
CIRCLING	<b>840 (673-2.4)</b>	<b>900 (733-4.0)</b>	<b>980 (813-5.0)</b>	
ALTERNATE	(1173-4.4)		(1233-6.0) (1313-7.0)	

1. MAX IAS:  
INITIAL : 210KT.

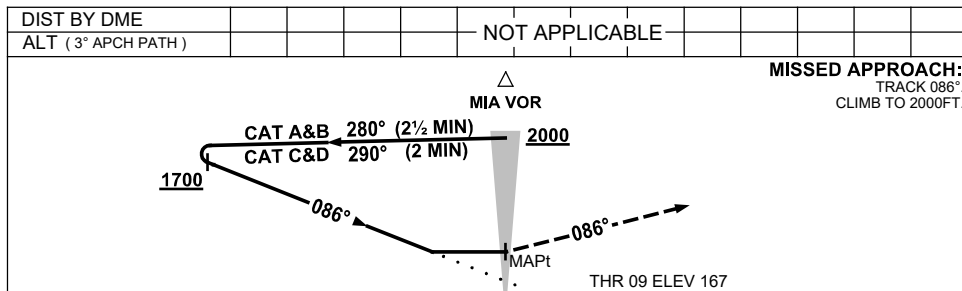
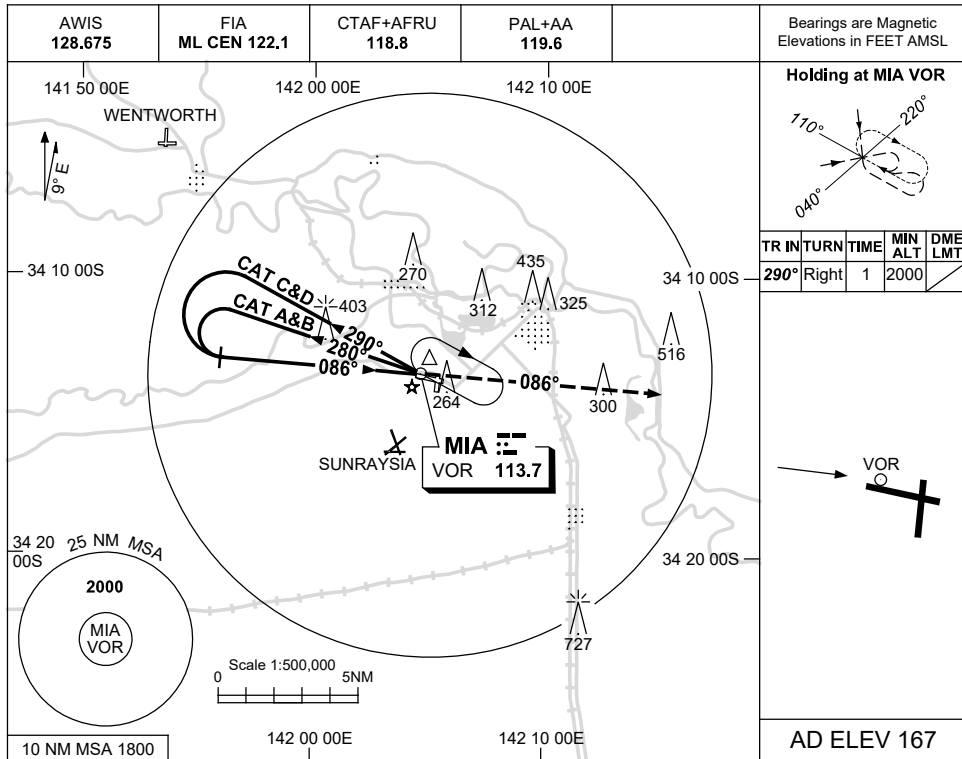
Changes: SUNRAYSIA ALA.

MIAVO03-174

USE QNH

VOR-Y RWY 09  
MILDURA, VIC (YMIA)

23 MAR 2023



**NOTES**

- MAX IAS:  
INITIAL : 210KT.

CATEGORY	A	B	C	D
S-I VOR	780 (613-3.5)			
CIRCLING	840 (673-2.4)	900 (733-4.0)	980 (813-5.0)	
ALTERNATE	(1173-4.4)	(1233-6.0)	(1313-7.0)	

Changes: SUNRAYSLA ALA.

MIAVO04-174