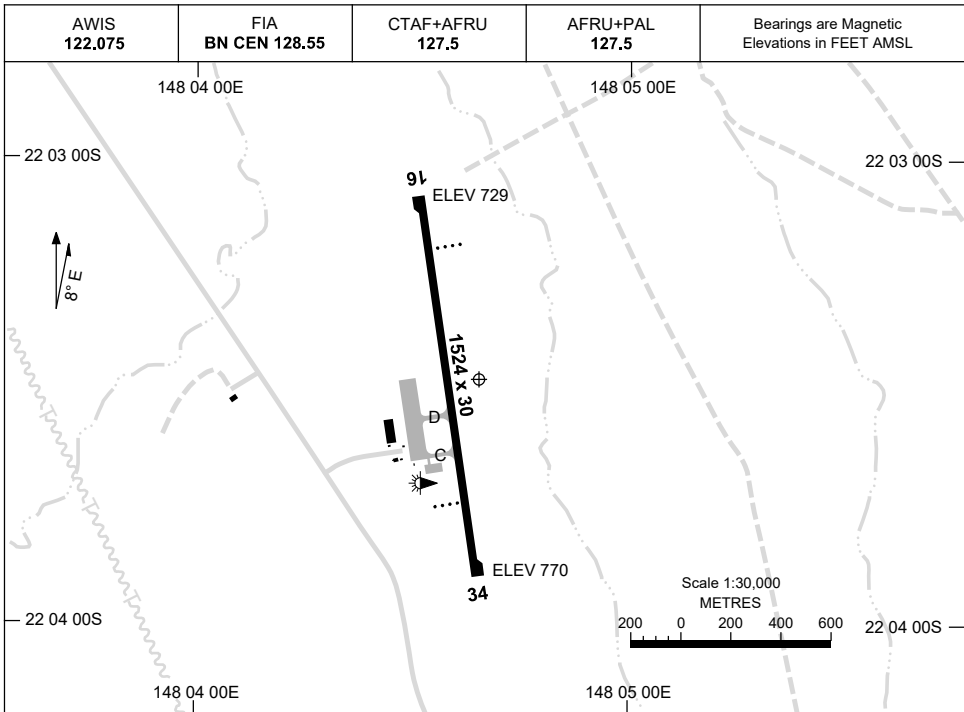


30 NOV 2023

AD ELEV 770
22 03 28S 148 04 39E

AERODROME CHART
MORANBAH, QLD (YMRB)



	AERODROME LIGHTING
RWY	RL : AFRU+PAL 127.5 , SDBY
16 ¹⁶³	PAPI 3.0° 48FT LIRL RTIL
³⁴³ 34	PAPI 3.0° 48FT LIRL RTIL

NOTES

1. AWIS RQ 1 SEC PULSE TO ACTIVATE.
2. FIA FREQ 128.55 AVBL CIRCUIT AREA.
FOR ON GROUND COM USE BN CEN 118.45.

Changes: SWITCHOVER TIME REMOVED, PAPI HEIGHT, Editorial.

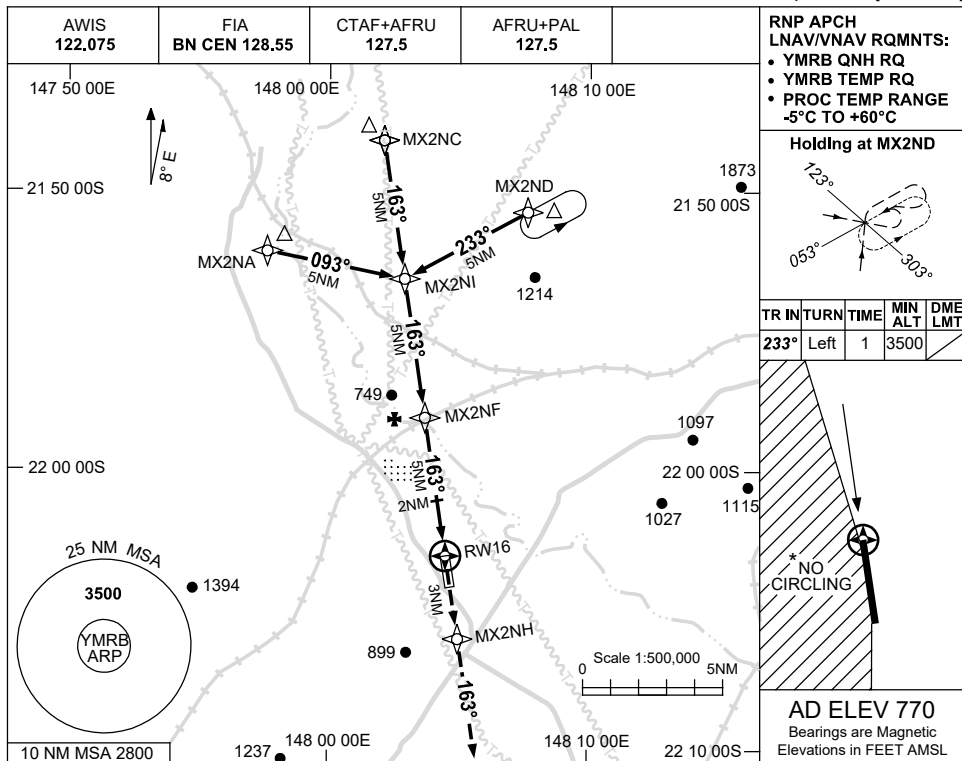
MRBAD01-177

USE QNH

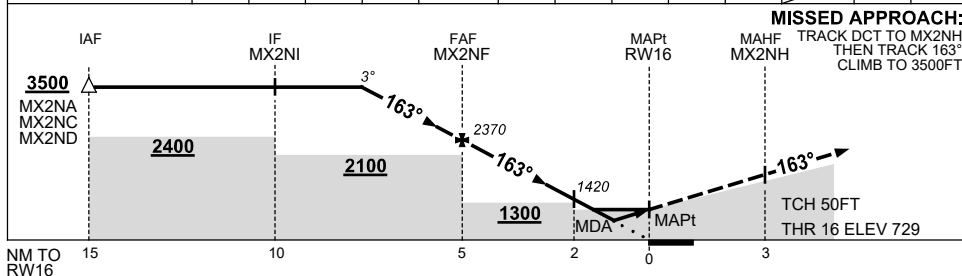
RNP RWY 16

13 JUN 2024

MORANBAH, QLD (YMRB)



NM TO NEXT WPT	3.6	3	2	1	MX2NF	4	3	2	1.5	0.9	RW16		
ALT (3° APCH PATH)	3500	3330	3010	2690	2370	2050	1730	1420	1250	1060			



NOTES

CATEGORY	A	B	C	D
LNAV/VNAV		1060 (331-1.8)		NOT APPLICABLE
LNAV		1250 (521-2.9)		
CIRCLING	1580 (810-2.4)		1680 (910-4.0)	
ALTERNATE	(1310-4.4)		(1410-6.0)	

- MAX IAS: INITIAL : 210KT.
- BLASTING OPS WITHIN 5NM OF AD.
- *3. NO CIRLING WEST OF RWY 16/34.

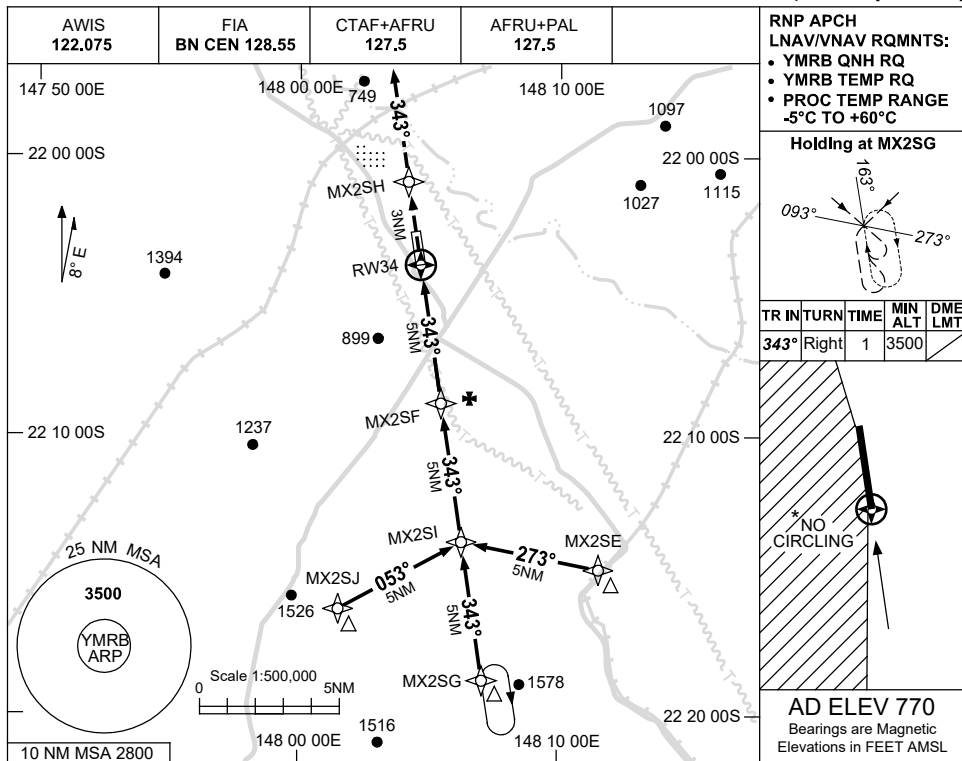
Changes: NO CIRCLING, WPT NAMING CONVENTION, NOTE.

MRBGN01-179

USE QNH

RNP RWY 34
MORANBAH, QLD (YMRB)

13 JUN 2024

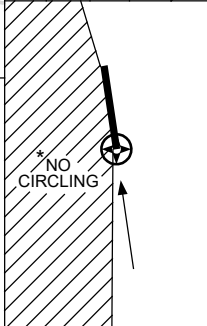


RNP APCH
LNAV/VNAV RQMNTS:

- YMRB QNH RQ
- YMRB TEMP RQ
- PROC TEMP RANGE -5°C TO +60°C

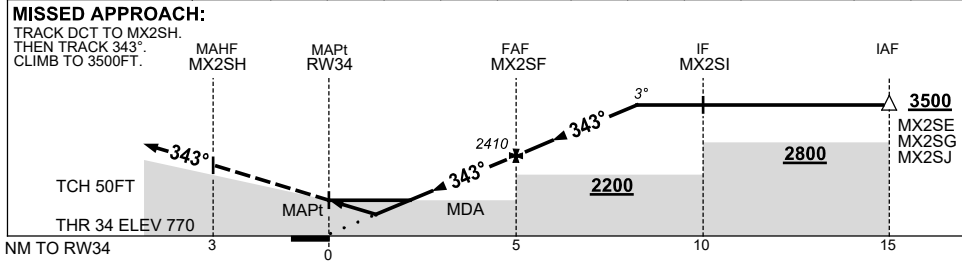
Holding at MX2SG

TR	IN	TURN	TIME	MIN ALT	DME LMT
343°	Right		1	3500	



AD ELEV 770
Bearings are Magnetic
Elevations in FEET AMSL

NM TO NEXT WPT	RW34	0.9	1.9	3	4	MX2SF	1	2	3	3.5		
ALT (3° APCH PATH)		1120	1440	1780	2090	2410	2730	3050	3370	3500		



NOTES

CATEGORY	A	B	C	D
LNAV/VNAV		1120 (350-2.0)		NOT APPLICABLE
LNAV		1440 (670-3.8)		
CIRCLING	1580 (810-2.4)		1680 (910-4.0)	
ALTERNATE		(1310-4.4)	(1410-6.0)	

1. MAX IAS: INITIAL : 210KT.
2. BLASTING OPS WITHIN 5NM OF AD.
- * 3. NO CIRLING WEST OF RWY 16/34.

Changes: NO CIRCLING, WPT NAMING CONVENTION, NOTE.

MRBG02-179