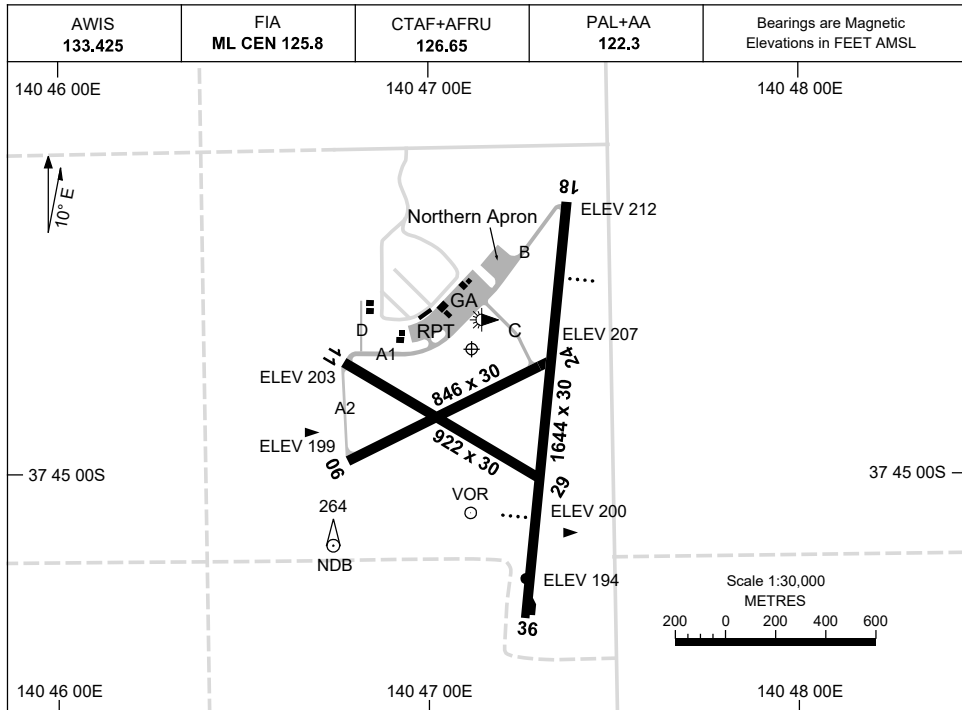


1 DEC 2022

AD ELEV 212  
37 44 44S 140 47 07E

AERODROME CHART  
**MOUNT GAMBIER, SA (YMTG)**



RWY		AERODROME LIGHTING
		TAXIWAY : GREEN CENTRELINE TWY B, BLUE EDGE TWY A1, A2 RL : PAL+AA 122.3 , SDBY (30 SEC)
<b>18</b> <sup>176</sup>		PAPI LEFT SIDE 3.0° 41FT LIRL
<sup>356</sup> <b>36</b>		PAPI LEFT SIDE 3.0° 41FT LIRL
<b>06</b> <sup>054</sup>		LIRL
<sup>234</sup> <b>24</b>		LIRL
<b>11</b> <sup>111</sup>		NIL
<sup>291</sup> <b>29</b>		NIL

**NOTES**

- FOR ON GROUND COM ML CEN 120.3
- AWIS RQ ONE-SECOND PULSE TO ACTIVATE.

Changes: NOTES 1 AND 2 DELETED, BUILDINGS ADDED, SWITCH OVER TIME.

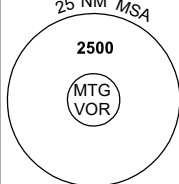
MTGAD01-173

# GNSS ARRIVAL PROCEDURES MOUNT GAMBIER, SA (YMTG)

16 JUN 2022

AWIS 133.425	FIA ML CEN 125.8	CTAF+AFRU 126.65	PAL+AA 122.3		Bearings are Magnetic Elevations in FEET AMSL
-----------------	---------------------	---------------------	-----------------	--	--

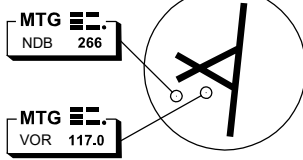
**REFERENCE WAYPOINT MTG VOR**



25 NM MSA


2500

(MTG VOR)



MTG NDB 266

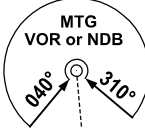
MTG VOR 117.0



AD ELEV 212

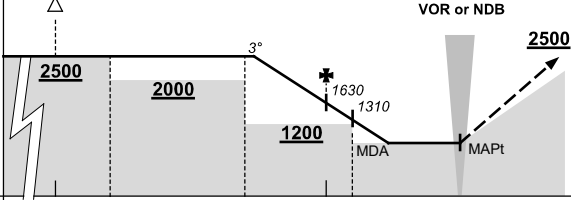
10 NM MSA 2000

**SECTOR A**



MTG VOR or NDB

040° 310°



VOR or NDB

**2500**

3°

1630

1310

1200

MDA

MAPt

**MISSED APPROACH:**

CLIMB ON TRACK TO 2500FT.

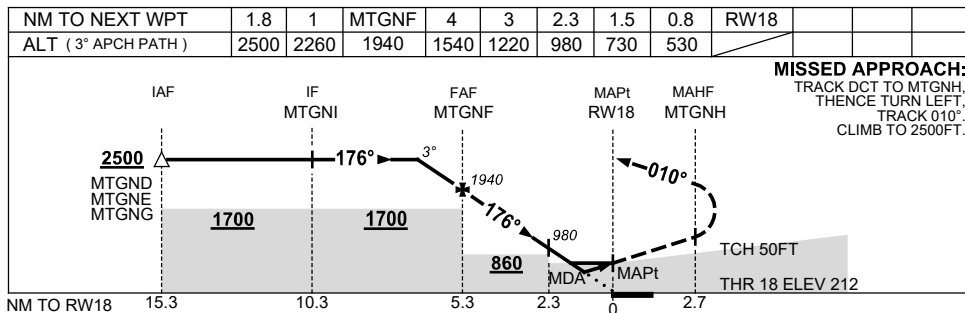
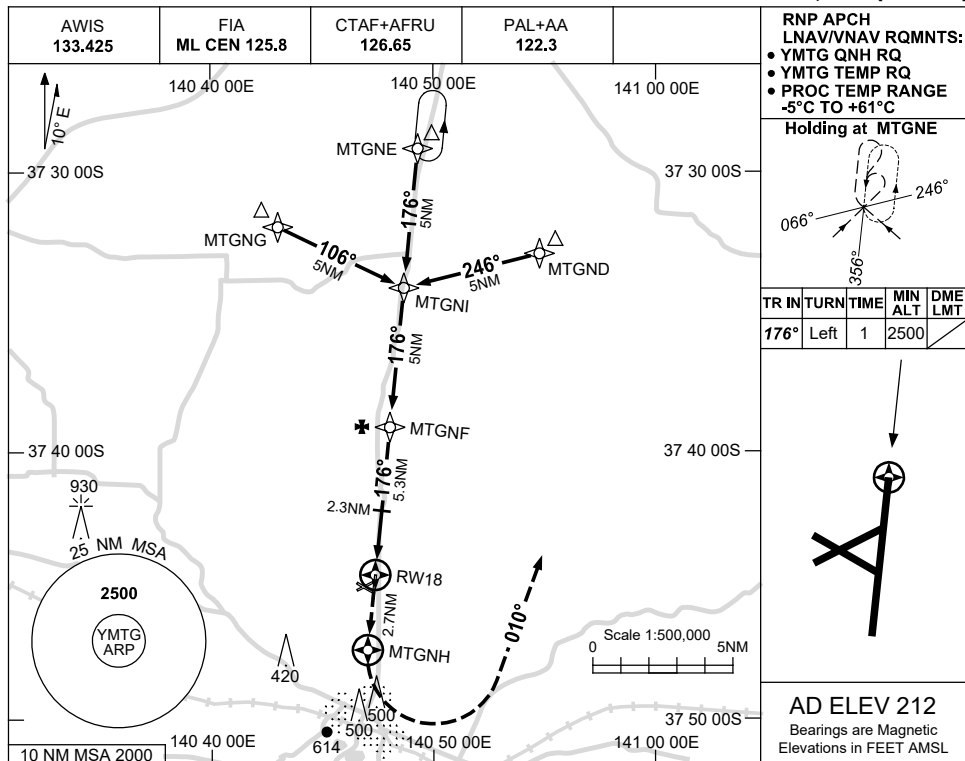
NM TO MTG VOR	25	15	13	8	5	4	0												
<b>CIRCLING MINIMA</b>	A,B: 880-2.4			C: 980-4.0			D: N/A												
NM TO MTG VOR	7.7	7	6	5	4	3	2.7												
ALT (3° APCH PATH)	2500	2260	1950	1630	1310	990	880												

USE QNH

RNP RWY 18

15 JUN 2023

MOUNT GAMBIER, SA (YMTG)



**NOTES**

CATEGORY	A	B	C	D
LNAV/VNAV	530 (318-1.8)			NOT APPLICABLE
LNAV	730 (518-2.9)			
CIRCLING	880 (668-2.4)		980 (768-4.0)	
ALTERNATE	(1168-4.4)		(1268-6.0)	

1. MAX IAS:  
INITIAL : 210KT.

Changes: CHART TITLE, PBN SPECIFICATION BOX, Editorial.

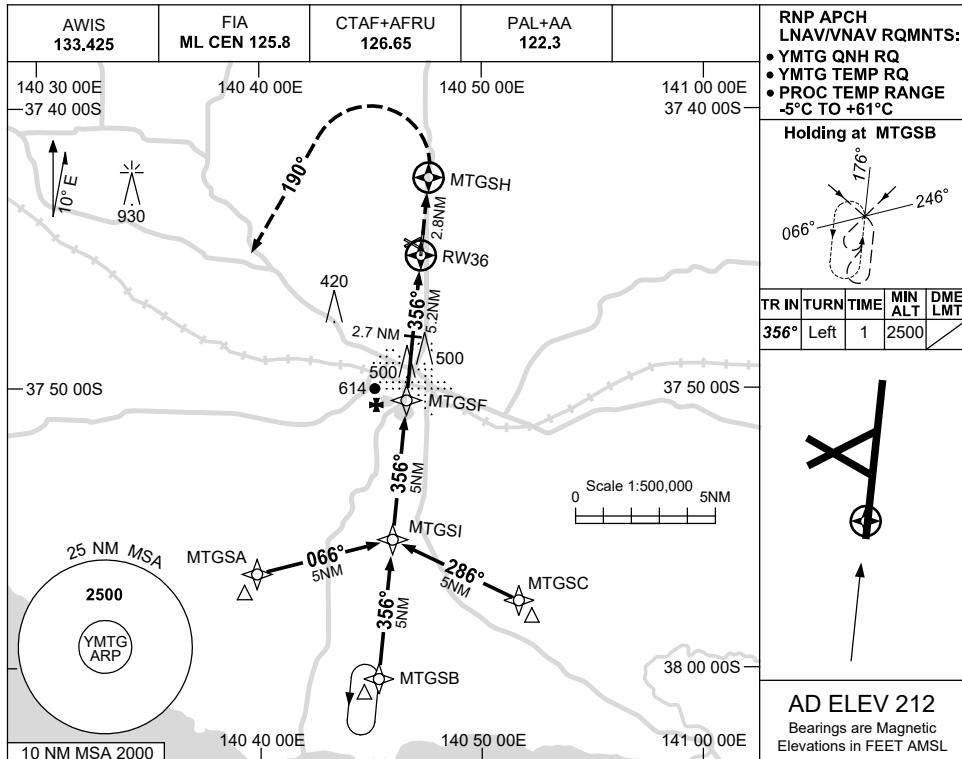
MTGGN01-175

USE QNH

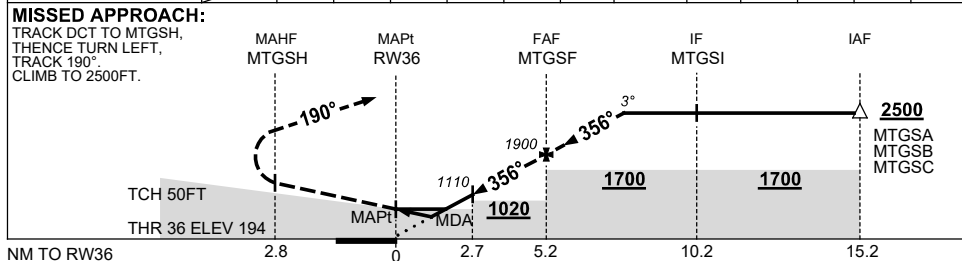
RNP RWY 36

15 JUN 2023

MOUNT GAMBIER, SA (YMTG)



NM TO NEXT WPT	RW36	0.9	1.5	2	2.7	3	4	MTGSF	1	1.9		
ALT (3° APCH PATH)		530	730	880	1110	1200	1520	1900	2220	2500		



**NOTES**

CATEGORY	A	B	C	D
LNAV/VNAV		530 (336-1.9)		NOT APPLICABLE
LNAV		730 (536-3.0)		
CIRCLING	880 (668-2.4)	980 (768-4.0)		
ALTERNATE	(1168-4.4)		(1268-6.0)	

1. MAX IAS:  
INITIAL : 210KT.

Changes: CHART TITLE, PBN SPECIFICATION BOX, Editorial.

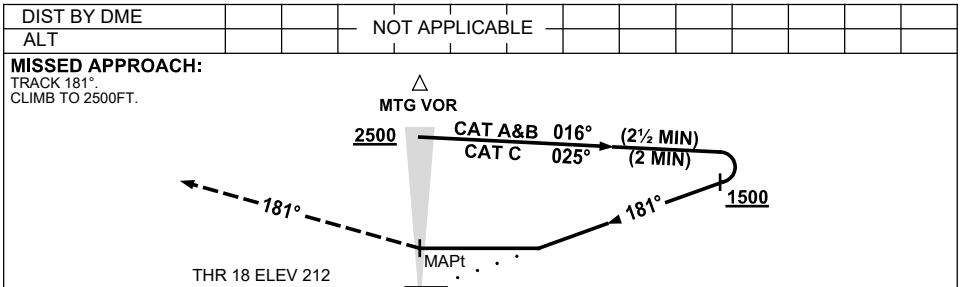
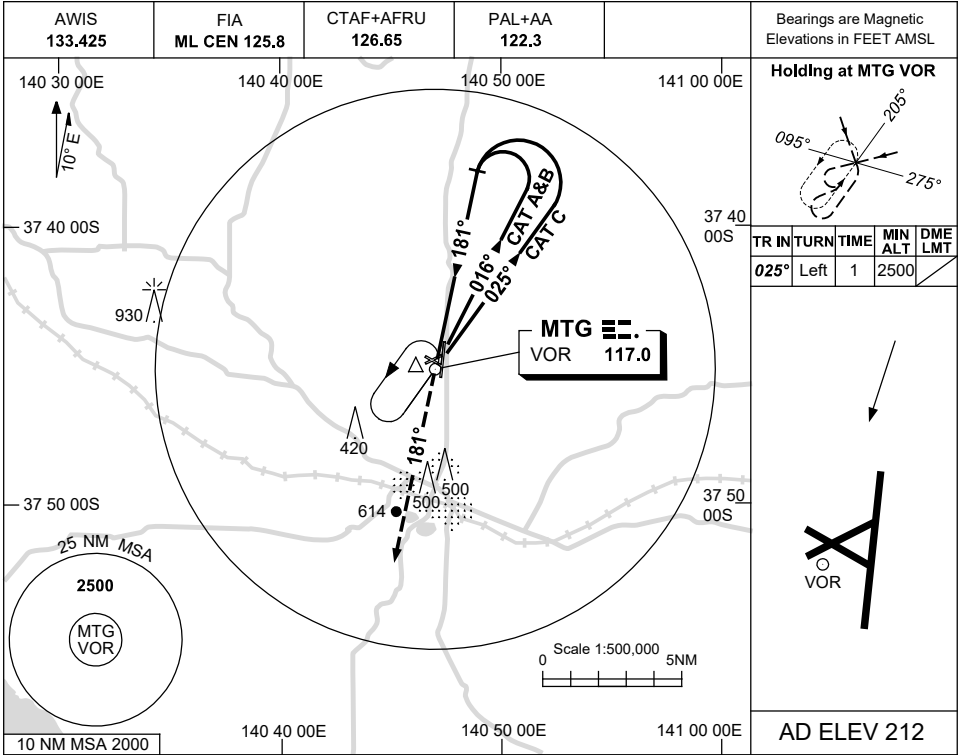
MTGGN02-175



16 JUN 2022

USE QNH

VOR RWY 18  
MOUNT GAMBIER, SA (YMTG)



**NOTES**

- MAX IAS:  
INITIAL : 210KT.

CATEGORY	A	B	C	D
S-I VOR	<b>880</b> (668-3.8)			NOT APPLICABLE
CIRCLING	<b>880</b> (668-2.4)		<b>980</b> (768-4.0)	
ALTERNATE	(1168-4.4)		(1268-6.0)	

Changes: PAL+AA.

MTGVO01-171