

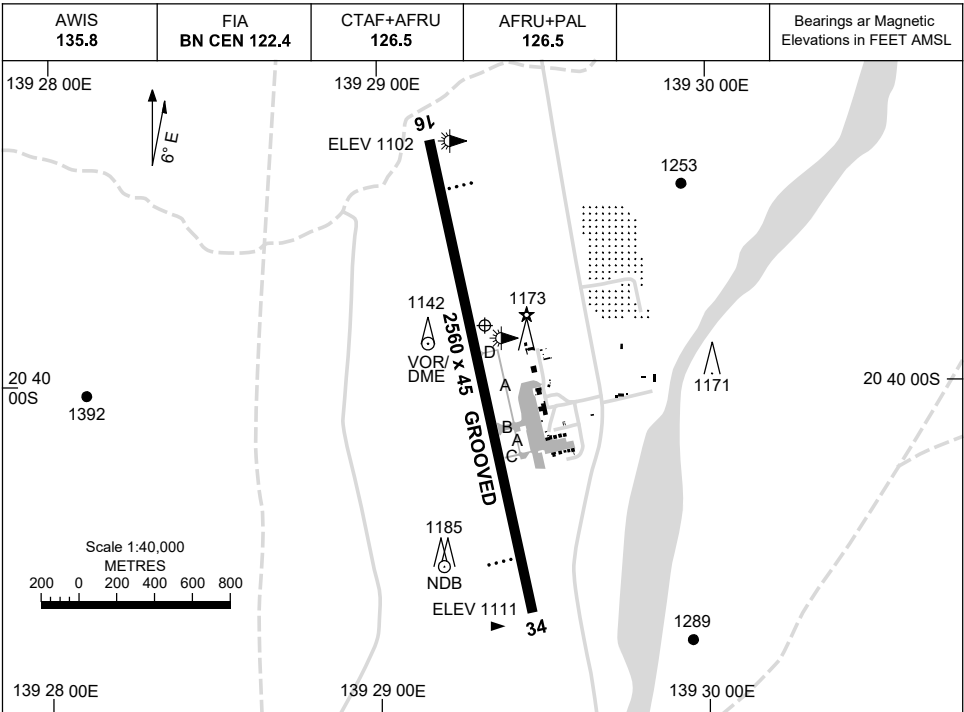
AD ELEV 1121

20 39 50S 139 29 19E

AERODROME CHART
MOUNT ISA, QLD (YBMA)

1 DEC 2022

Bearings ar Magnetic
Elevations in FEET AMSL



AERODROME LIGHTING

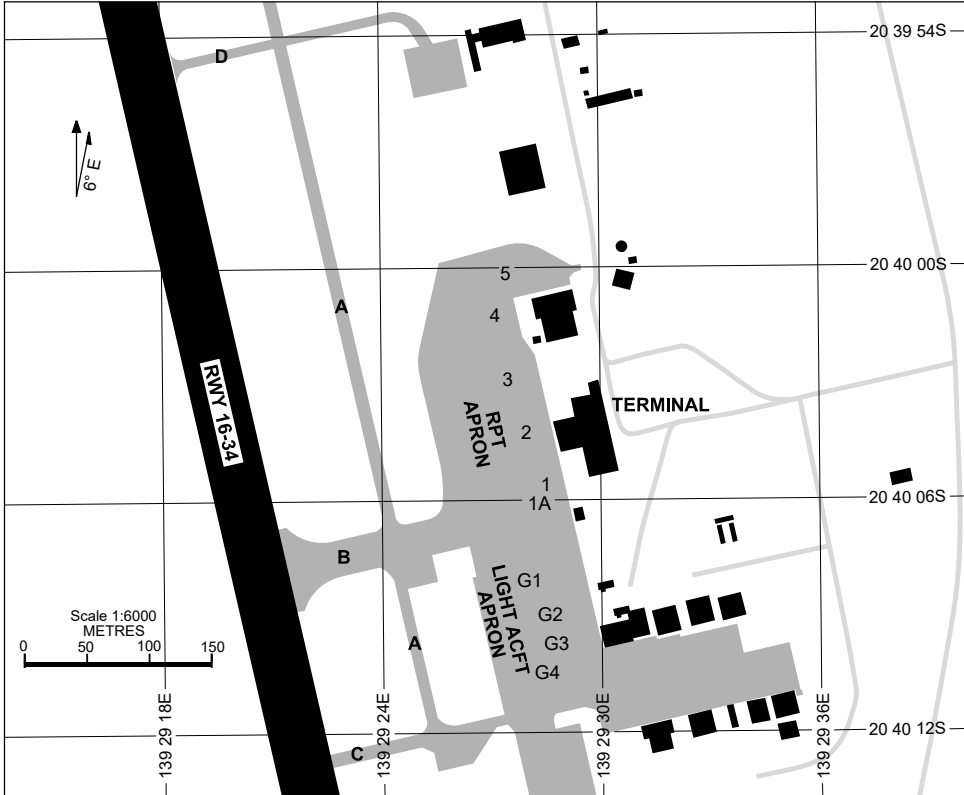
RWY	ABN : FLG W/G 8 SEC
	TAXIWAY : BLUE EDGE TWY B
	RL : AFRU+PAL 126.5 , SDBY (15 SEC) , PTBL (60 MIN PN ARO 0428 030 409)
16 ¹⁶²	PAPI 3.0° 53.3FT MIRL PTBL
³⁴² 34	PAPI 3.0° 53.3FT MIRL PTBL

NOTES

Changes: NOTES.

BMAAD01-173

17 JUN 2021



PARKING POSITION INFORMATION

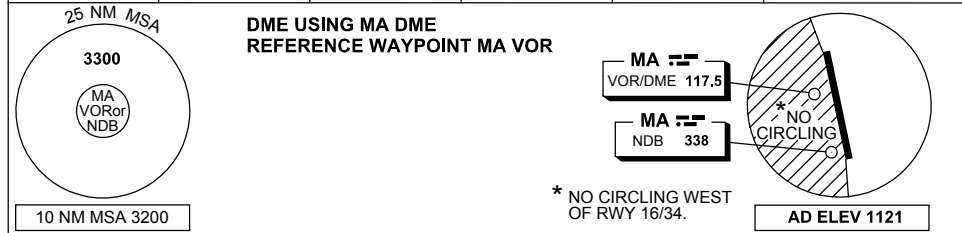
STAND	CO-ORDINATES	ELEV (ft)	CAPACITY	HYDRANT FUEL	DOCKING SYSTEM
1	20 40 05.68S 139 29 28.52E	1106	A321	TANKER	NIL
1A	20 40 06.15S 139 29 28.35E	1106	DH8D	TANKER	NIL
2	20 40 04.29S 139 29 27.99E	1104	B738	TANKER	NIL
3	20 40 02.86S 139 29 27.49E	1104	F100	TANKER	NIL
4	20 40 01.18S 139 29 27.14E	1104	DH8C	TANKER	NIL
5	20 40 00.11S 139 29 27.43E	1103	SW4	TANKER	NIL
G1	20 40 08.07S 139 29 28.04E	1105	SW4	TANKER	NIL
G2	20 40 08.96S 139 29 28.63E	1106	BE35	TANKER	NIL
G3	20 40 09.71S 139 29 28.82E	1105	BE35	TANKER	NIL
G4	20 40 10.36S 139 29 28.25E	1106	BE35	TANKER	NIL

Changes: ACFT STANDS COORDS, ELEV, CAPACITY & DOCKING SYSTEM UPDATE.

DME or GNSS ARRIVAL PROCEDURES MOUNT ISA, QLD (YBMA)

2 MAR 2017

AWIS 135.8	FIA BN CEN 122.4	CTAF+AFRU 126.5	AFRU+PAL 126.5		Bearings are Magnetic Elevations in FEET AMSL
---------------	---------------------	--------------------	-------------------	--	--



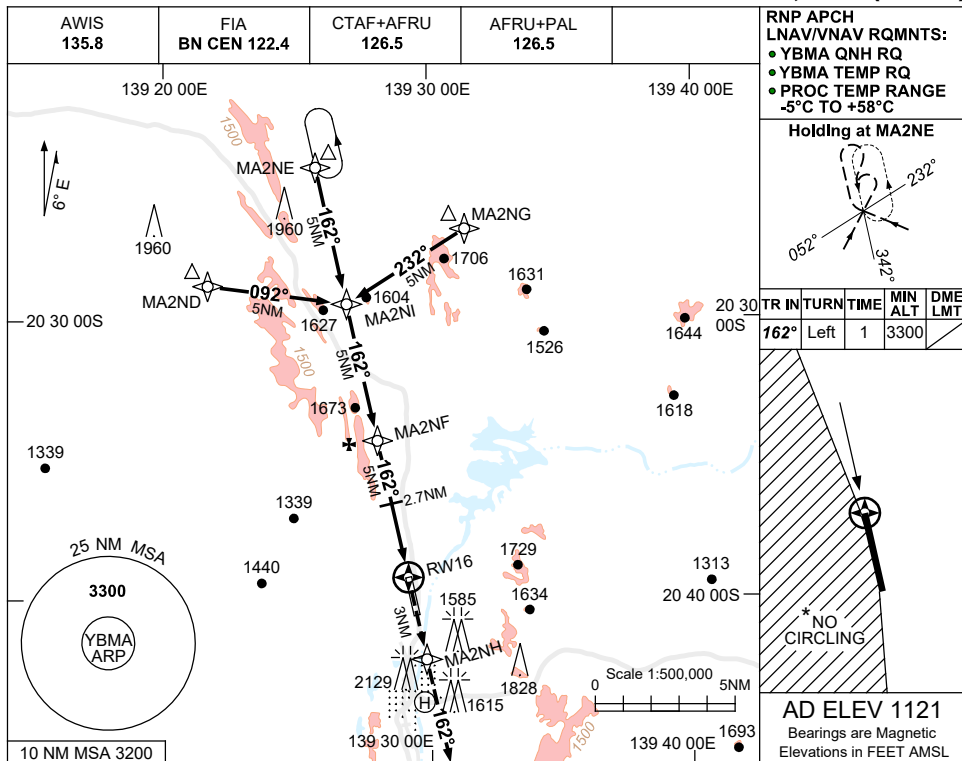
ALL ROUTES TO MA VOR or NDB	△	VOR or NDB						MISSED APPROACH:											
	3300	3000	2500	3140	2500	3300	CLIMB ON TRACK TO 3300FT.												
NM FM VOR	25	15	7	4	2	0													
CIRCLING MINIMA				A,B: 2220-2.4	C: 2450-4.0		D: 2450-5.0												
NM FM VOR	4.5	4	3	2	1.8	1.1													
ALT (3° APCH PATH)	3300	3140	2820	2500	2450	2220													

USE QNH

RNP Z RWY 16

15 JUN 2023

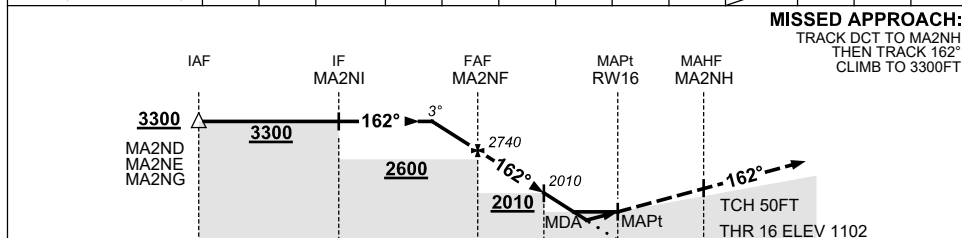
MOUNT ISA, QLD (YBMA)



TR	IN	TURN	TIME	MIN ALT	DME LMT
162°	Left	1	3300		

AD ELEV 1121
Bearings are Magnetic
Elevations in FEET AMSL

NM TO NEXT WPT	1.7	1	MA2NF	4	3	2.7	2.5	2	1.8	RW16
ALT (3° APCH PATH)	3300	3060	2740	2430	2110	2010	1940	1790	1740	



MISSED APPROACH:
TRACK DCT TO MA2NH,
THEN TRACK 162°,
CLIMB TO 3300FT.

NM TO RW16: 15, 10, 5, 2.7, 0, 3

CATEGORY	A	B	C	D
LNAV/VNAV		1740 (638-3.6)		
LNAV		1940 (838-4.8)		
CIRCLING *	2090 (969-2.4)	2450 (1329-4.0)		2450 (1329-5.0)
ALTERNATE	(1469-4.4)	(1829-6.0)		(1829-7.0)

- NOTES**
- MAX IAS: INITIAL : 210KT.
 - NO CIRCLING WEST OF RWY 16/34.
 - COLOUR: SEE SPEC NOTICES.

Changes: Editorial.

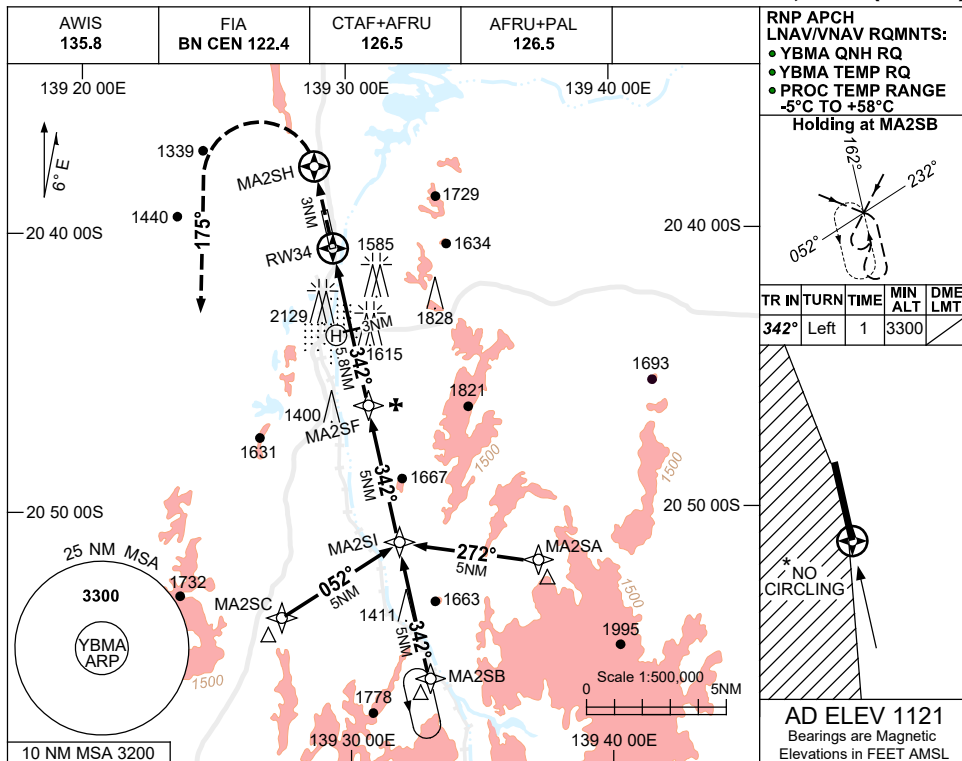
BMAGN01-175

USE QNH

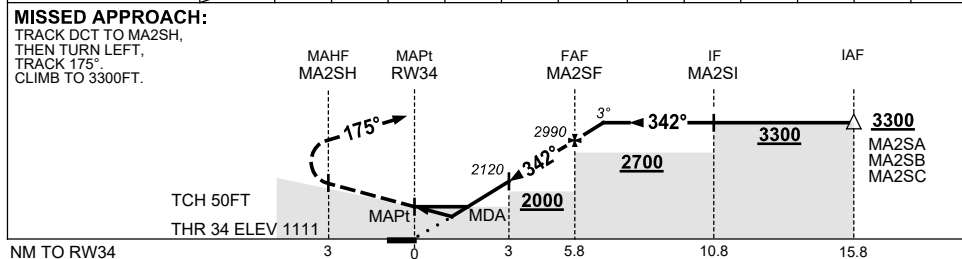
RNP Z RWY 34

15 JUN 2023

MOUNT ISA, QLD (YBMA)



NM TO NEXT WPT	RW34	1.3	1.8	3	4	5	MA2SF	1			
ALT (3° APCH PATH)		1590	1740	2120	2430	2750	2990	3300			



CATEGORY	A	B	C	D
LNAV/VNAV		1590 (479-2.7)		
LNAV		1740 (629-3.6)		
CIRCLING *	2090 (969-2.4)		2450 (1329-4.0)	2450 (1329-5.0)
ALTERNATE	(1469-4.4)		(1829-6.0)	(1829-7.0)

- NOTES**
- MAX IAS: INITIAL : 210KT.
 - * NO CIRCLING WEST OF RWY 16/34.
 - COLOUR: SEE SPEC NOTICES.

Changes: 5.8NM-3NM MIN ALT.

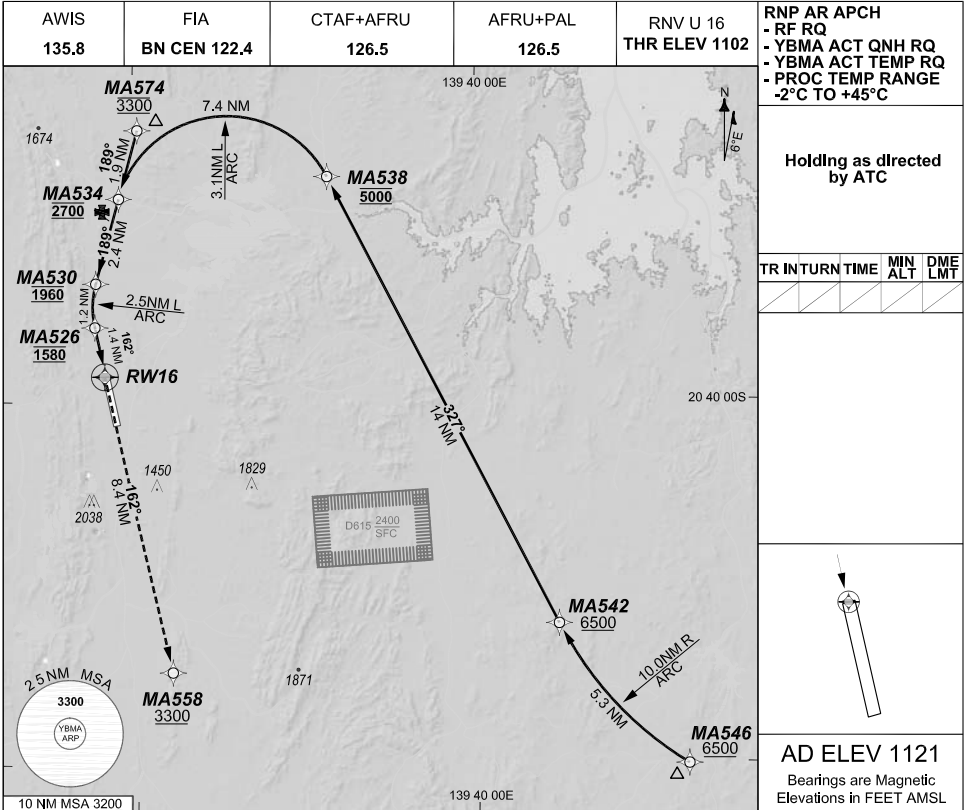
BMAGN02-175

**FOR CASA APPROVED
OPERATORS ONLY
USE QNH**

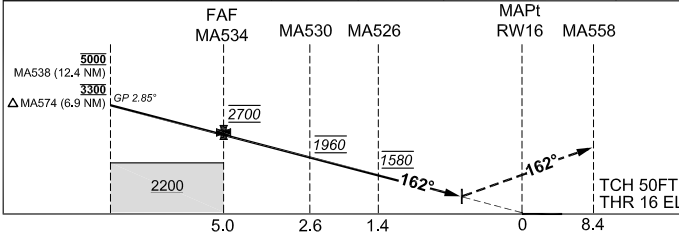
1 DEC 2022

GE PROPRIETARY INFORMATION

202208051420 COPYRIGHT © 2022 NAVERUS, INC. USA



	MA538	MA574	MA534	MA530	MA526	RW16
ALT (2.85° APCH PATH)	5000	3300	2700	1960	1580	1102



MISSED APPROACH:
Climb to 3300FT via the RNP AR Missed Approach track to MA558. Acceleration altitude 2200FT QNH (1000FT AGL). If unable to cross MA558 at or above 3300FT continue on Engine Out Missed Approach track.

ENGINE OUT MISSED APPROACH:
SEE PAGE 2

NM NM THR

RNP AR APCH
- RF RQ
- YBMA ACT QNH RQ
- YBMA ACT TEMP RQ
- PROC TEMP RANGE
-2°C TO +45°C

**Holding as directed
by ATC**

TR	INTURN TIME	MIN ALT	DME LMT

AD ELEV 1121
Bearings are Magnetic
Elevations in FEET AMSL

NOTES

- Lateral transition to MAP must not be initiated prior to DA/H PSN.
- APCH Path does not coincide with PAPI glide path 3°.
- MIN MAP GRAD (AE) for RNP 0.20 3.2% and RNP 0.30 3.0% to 3300 FT.

CATEGORY	A	B	C	D
RNP (0.30)	N/A		DA(H) 1675 (573 - 3.3)	DA(H) 1675 (573 - 3.3)
RNP (0.20)			DA(H) 1621 (519 - 2.9)	DA(H) 1621 (519 - 2.9)
CIRCLING			NOT AUTHORISED	NOT AUTHORISED
ALTERNATE				

Changes: Chart reformatting, Glide path note, Added D615 danger area.

BMAGN03-173

DO NOT USE FOR NAVIGATION

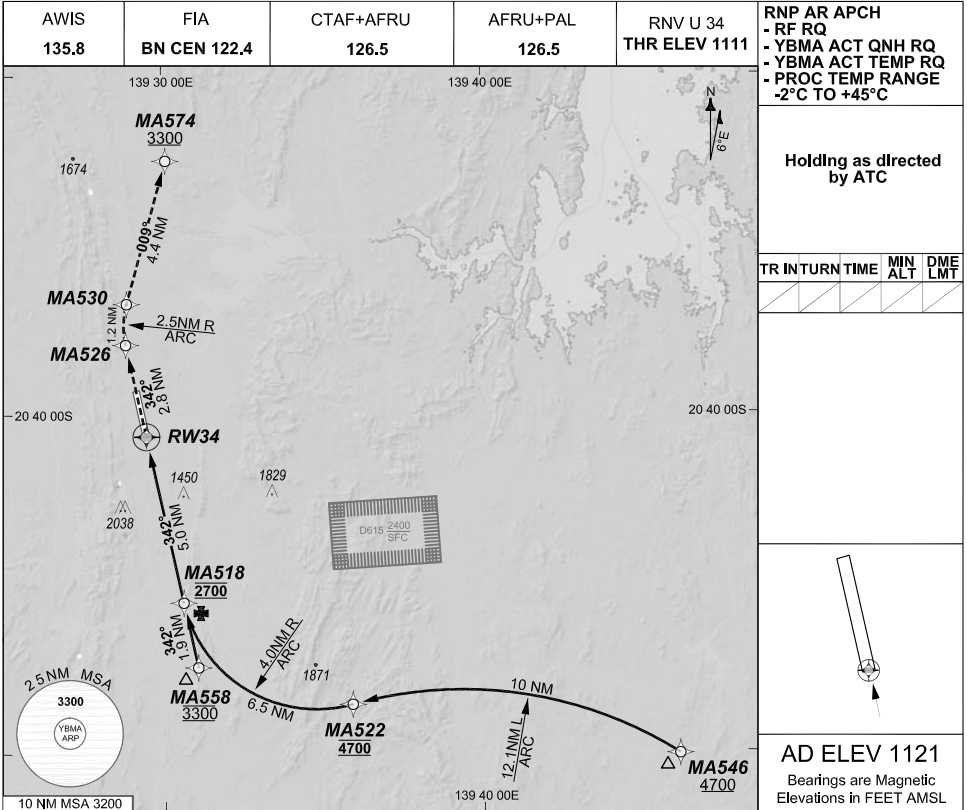
Prepared by GE Aviation



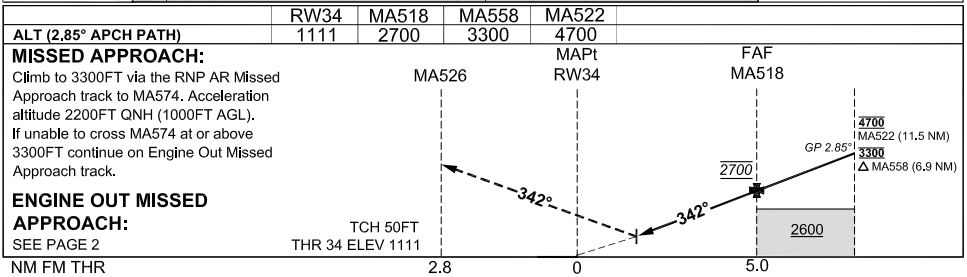
**FOR CASA APPROVED
OPERATORS ONLY
USE QNH**

1 DEC 2022

GE PROPRIETARY INFORMATION



202208051421 COPYRIGHT 2022 NAVERUS, INC. USA



NOTES

1. Lateral transition to MAP must not be initiated prior to DAVH PSN.
2. APCH Path does not coincide with PAPI glide path 3°.
3. MIN MAP GRAD (AE) for RNP 0.15 and RNP 0.20 3.6% to 3000FT. RNP 0.30 3.5% to 3300 FT.

Changes: Chart reformatting, RNP 0.30 DA/VIS change, Glide path note, Added D615 danger area.

BMAGN04-173

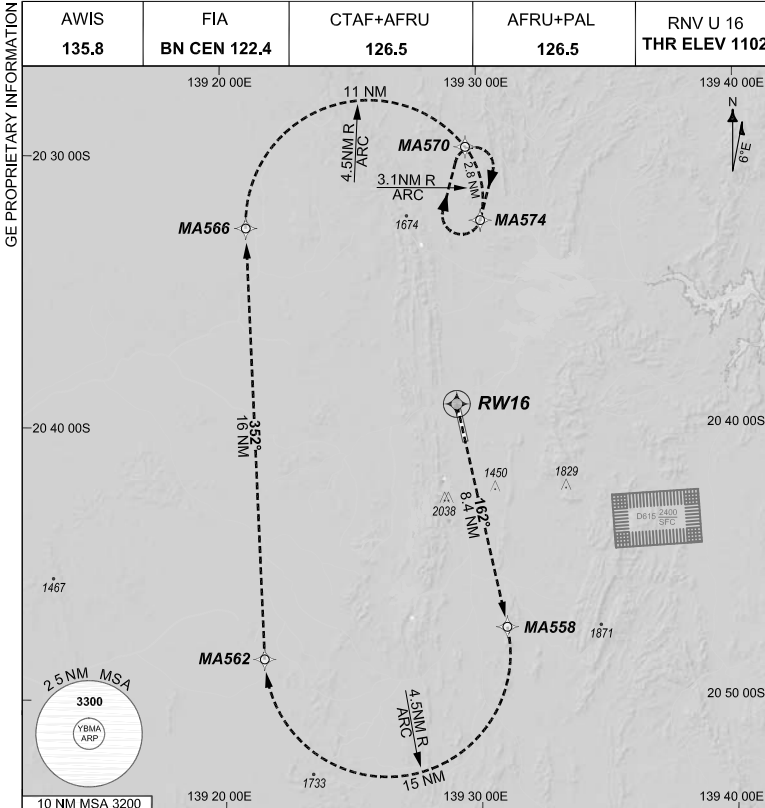
DO NOT USE FOR NAVIGATION

Prepared by GE Aviation

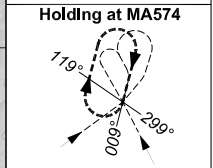


**FOR CASA APPROVED
OPERATORS ONLY
USE QNH**

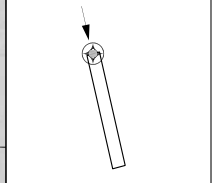
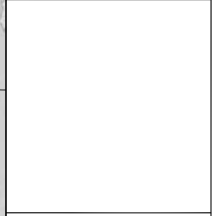
1 DEC 2022



RNP AR APCH
- RF RQ
- YBMA ACT QNH RQ
- YBMA ACT TEMP RQ
- PROC TEMP RANGE
-2°C TO +45°C



TR INTRN TIME	MIN ALT	DME LMT
189° Right	1'	3300



AD ELEV 1121
Bearings are Magnetic
Elevations in FEET AMSL

ENGINE OUT MISSED APPROACH:

Track via the RNP AR Engine Out Missed Approach track to MA574 and hold as published. Acceleration altitude 2200FT QNH (1000FT AGL). Maximum holding speed 230 KIAS. EO hold only.

202208041711 COPYRIGHT © 2022 NAVERUS, INC. USA

Changes: NEW

BMAGN05-173

DO NOT USE FOR NAVIGATION

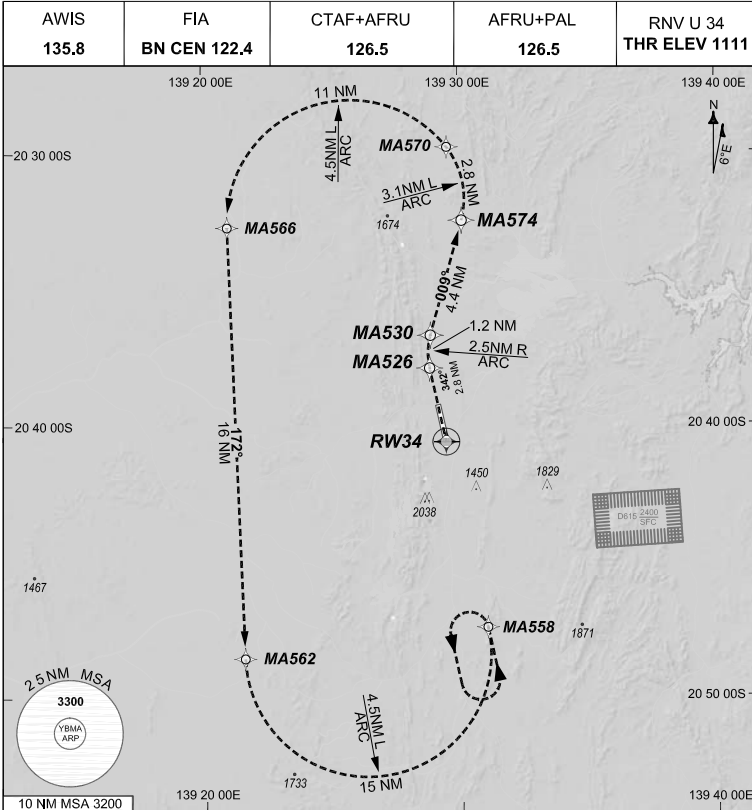
Prepared by GE Aviation



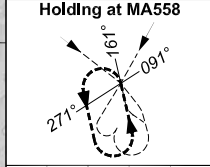
**FOR CASA APPROVED
OPERATORS ONLY
USE QNH**

1 DEC 2022

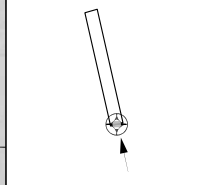
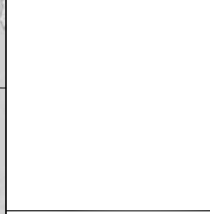
GE PROPRIETARY INFORMATION



RNP AR APCH
 - RF RQ
 - YBMA ACT QNH RQ
 - YBMA ACT TEMP RQ
 - PROC TEMP RANGE
 -2°C TO +45°C



TR	INTURN	TIME	MIN ALT	DME LMT
341°	Left	1'	3300	



AD ELEV 1121
 Bearings are Magnetic
 Elevations in FEET AMSL

ENGINE OUT MISSED APPROACH:

Track via the RNP AR Engine Out Missed Approach track to MA558 and hold as published. Acceleration altitude 2200FT QNH (1000FT AGL). Maximum holding speed 230 KIAS. EO hold only.

202208050931 COPYRIGHT © 2022 NAVERUS, INC. USA

Changes: NEW

BMAGN06-173

DO NOT USE FOR NAVIGATION

Prepared by GE Aviation



NOISE ABATEMENT PROCEDURES

MOUNT ISA

1 - PREFERRED RUNWAYS

- | | | |
|-----|----------|-----------|
| 1.1 | Landing | Runway 16 |
| 1.2 | Take-off | Runway 34 |

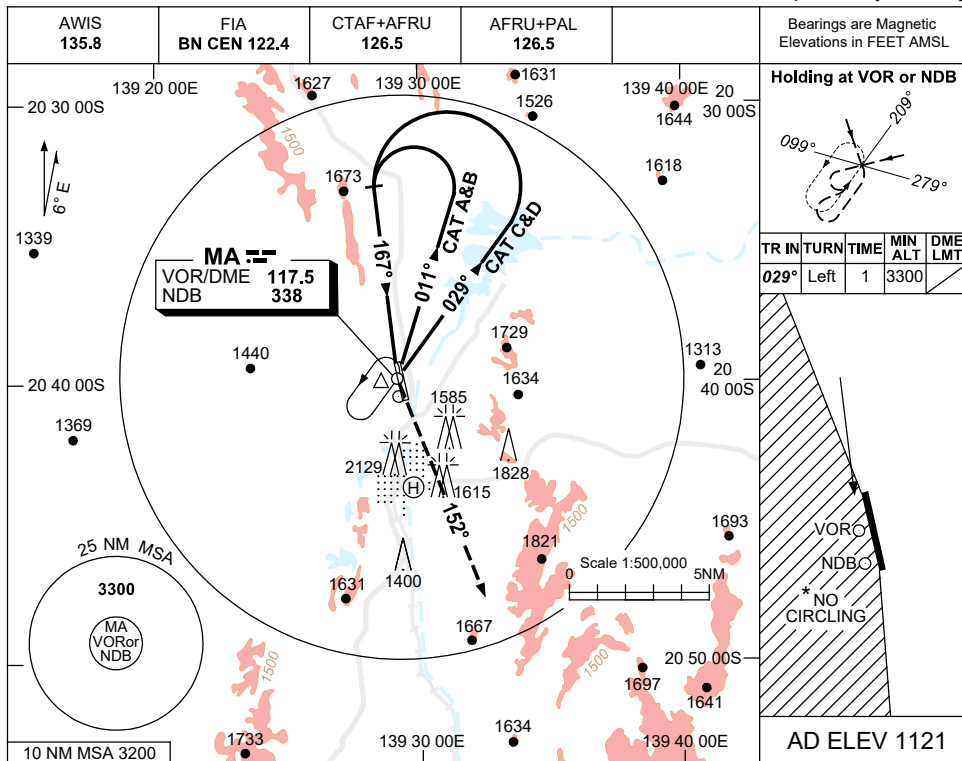
2 - PREFERRED FLIGHT PATHS

- 2.1 Whenever possible, JET aircraft are to avoid overflying the residential areas of the city.

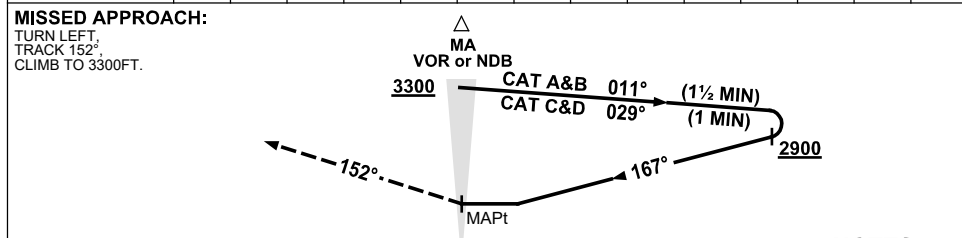
USE QNH

NDB-A or VOR-A
MOUNT ISA, QLD (YBMA)

15 JUN 2023



DME DIST	NOT APPLICABLE				
ALT					



NOTES

1. MAX IAS:
INITIAL :
CAT C&D 190KT.
- *2. NO CIRCLING WEST
OF RWY 16/34.
3. NDB HLDG PTN
INBOUND LEG MAY
BE SUBJECT TO
EXCESSIVE NEEDLE
SWINGS.
4. COLOUR: SEE
SPEC NOTICES.

CATEGORY	A	B	C	D
CIRCLING *	2220 (1099-2.4)		2450 (1329-4.0)	2450 (1329-5.0)
ALTERNATE	(1599-4.4)		(1829-6.0)	(1829-7.0)

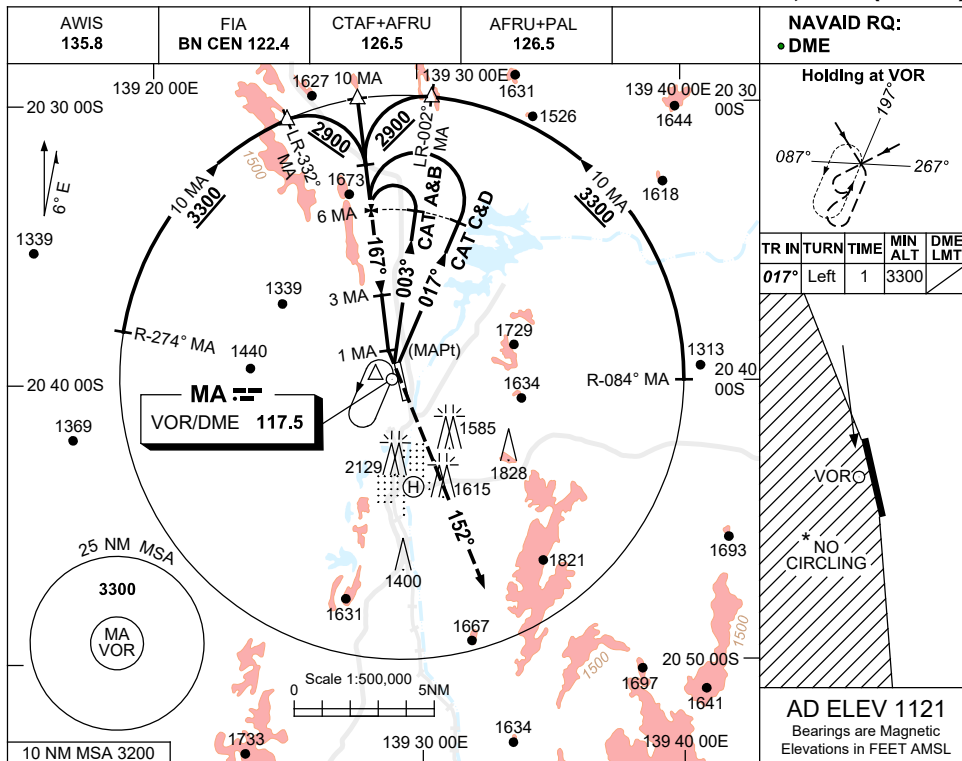
Changes: CAT C&D OUTBOUND TRK.

BMANB01-175

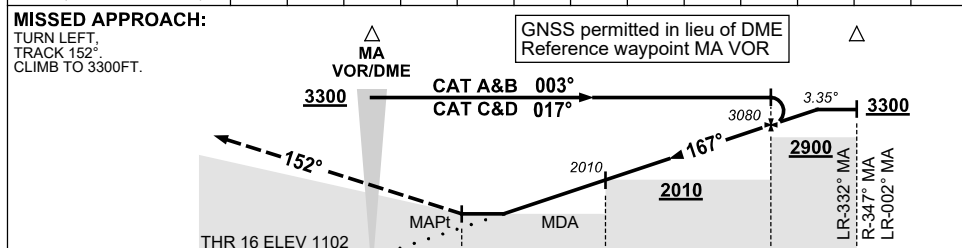
USE QNH

VOR RWY 16
MOUNT ISA, QLD (YBMA)

15 JUN 2023



DIST BY DME	2.9	3	4	5	6	6.6							
ALT (3.35° APCH PATH)	1980	2010	2370	2720	3080	3300							



NM TO MA DME

CATEGORY	A	B	C	D
S-I VOR/DME	1980 (878-4.5)			
CIRCLING *	2090 (969-2.4)	2450 (1329-4.0)	2450 (1329-5.0)	
ALTERNATE	(1469-4.4)	(1829-6.0)	(1829-7.0)	

- NOTES**
- MAX IAS: INITIAL : 210KT.
 - NO CIRCLING WEST OF RWY 16/34.
 - COLOUR: SEE SPEC NOTICES.

Changes: CAT A&B OUTBOUND TRK. BMAV001-175