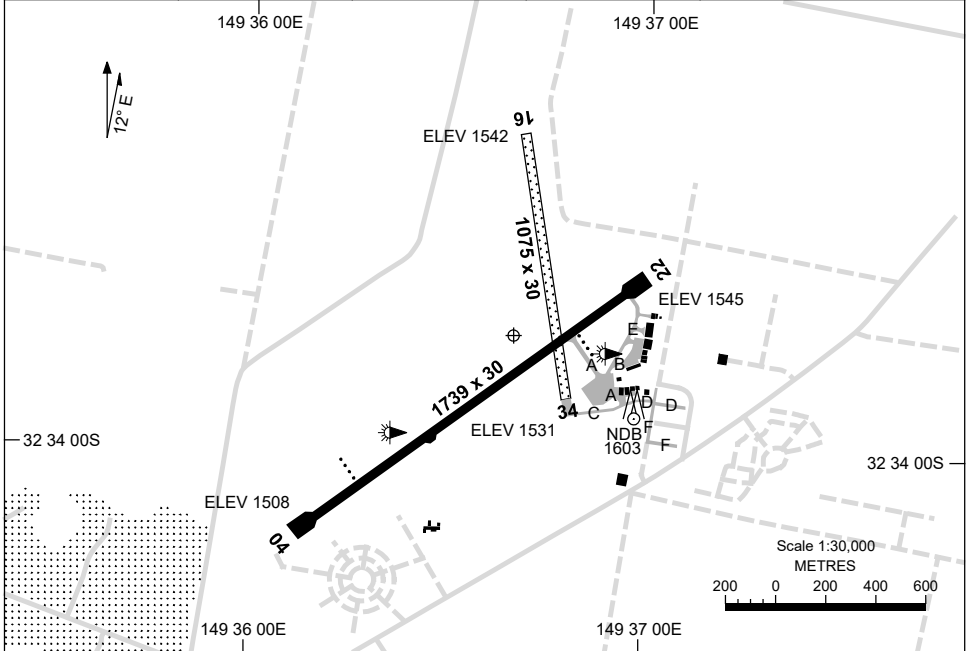


7 SEP 2023

AD ELEV 1545
32 33 45S 149 36 40E

AERODROME CHART
MUDGEES, NSW (YMDG)

FIA BN CEN 133.05	CTAF 126.7	PAL 122.3		Bearings are Magnetic Elevations in FEET AMSL
----------------------	---------------	--------------	--	--



RWY		AERODROME LIGHTING
		TAXIWAY : BLUE EDGE RL : PAL 122.3 , SDBY (1 MIN)
04 <small>041</small>		PAPI 3.0° 45FT LIRL
<small>221</small> 22		PAPI 3.0° 43FT LIRL
16 <small>159</small>		NIL
<small>339</small> 34		NIL

NOTES

1. AWIS (PHONE) 02 9353 6439.
2. FIA 133.05 AVBL IN CIRCUIT AREA.
3. PAPI RWY 04 MUST NOT BE USED BEYOND CIRCLING AREA.

Changes: NOTES.

MDGAD01-176

13 JUN 2024

FIA BN CEN 133.05	CTAF 126.7	PAL 122.3		Bearings are Magnetic Elevations in FEET AMSL
----------------------	---------------	--------------	--	--

REFERENCE WAYPOINT MDG NDB
AWIS (PHONE) 02 9353 6439

* NO CIRCLING IN SECTOR S OF RWY 04/22 AND E OF RWY 16/34.

AD ELEV 1545

SECTOR A

MISSED APPROACH:
TURN AS APPROPRIATE,
TRACK 150°. CLIMB TO 4800FT.

NM TO MDG NDB	25	15	7	5	3	0														
CIRCLING MINIMA	A,B: 3200-2.4		C: 3520-4.0		D: N/A															
NM TO MDG NDB	6.8	6	5	4	3	2.7	2	1.7												
ALT (3° APCH PATH)	4800	4550	4230	3920	3600	3520	3280	3200												

SECTOR B

MISSED APPROACH:
TURN RIGHT,
TRACK 300°. CLIMB TO 4100FT.

NM TO MDG NDB	25	15	8	5	3	0													
CIRCLING MINIMA	A,B: 3160-2.4		C: 3520-4.0		D: N/A														
NM TO MDG NDB	5.5	5	4	3	2	1.5	1	0.4											
ALT (3° APCH PATH)	4800	4630	4320	4000	3680	3520	3360	3160											

SECTOR C

MISSED APPROACH:
TURN AS APPROPRIATE,
TRACK 300°. CLIMB TO 4100FT.

NM TO MDG NDB	25	15	7	5	3	2	0												
CIRCLING MINIMA	A,B: 3110-2.4		C: 3520-4.0		D: N/A														
NM TO MDG NDB	5.5	5	4	3	2	1.5	1	0.2											
ALT (3° APCH PATH)	4800	4630	4320	4000	3680	3520	3360	3110											

Changes: DIST-ALT TABLE.

MDGDG01-179

**GNSS ARRIVAL PROCEDURES
MUDGEES, NSW (YMDG) Page 2**

15 AUG 2019

FIA BN CEN 133.05	CTAF 126.7	PAL 122.3			Bearings are Magnetic Elevations in FEET AMSL
-----------------------------	----------------------	---------------------	--	--	--

REFERENCE WAYPOINT MDG NDB
AWIS (PHONE) 02 9353 6439

10 NM MSA 4500

* NO CIRCLING IN SECTOR S OF RWY 04/22 AND E OF RWY 16/34.

AD ELEV 1545

SECTOR D

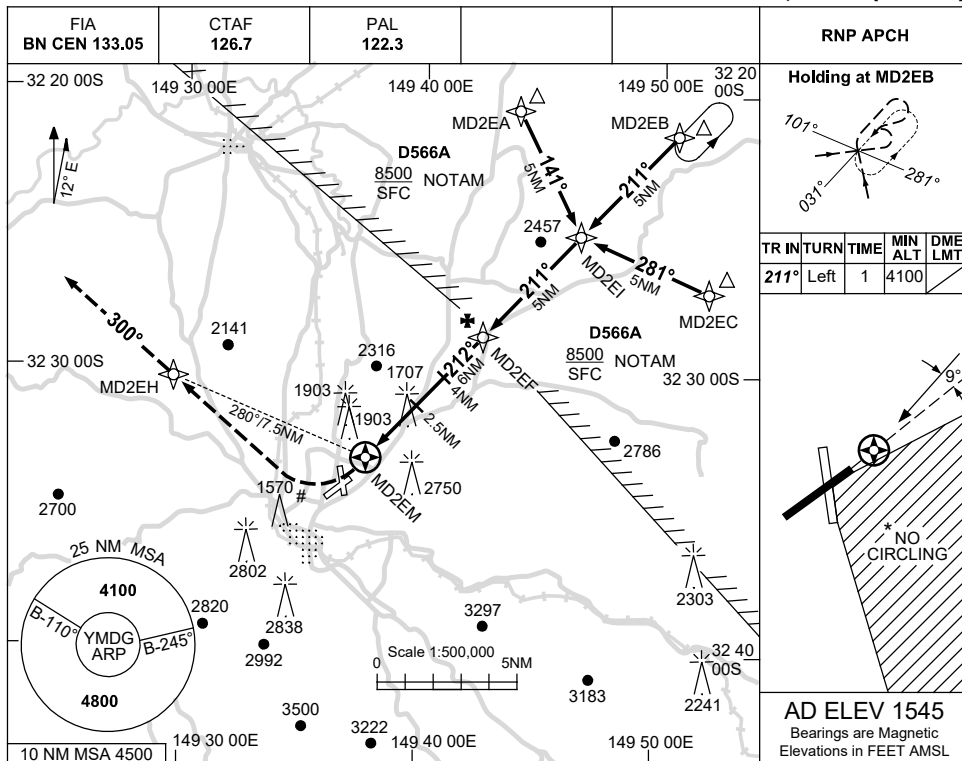
MISSED APPROACH:
TURN LEFT,
TRACK 300°.
CLIMB TO 4100FT.

NM TO MDG NDB	25	15	6	5	3	0												
CIRCLING MINIMA				A,B: 3420-2.4	C: 3520-4.0		D: N/A											
NM TO MDG NDB	6	5	4	3	2	1.7												
ALT (3° APCH PATH)	4800	4480	4160	3840	3520	3420												

USE QNH

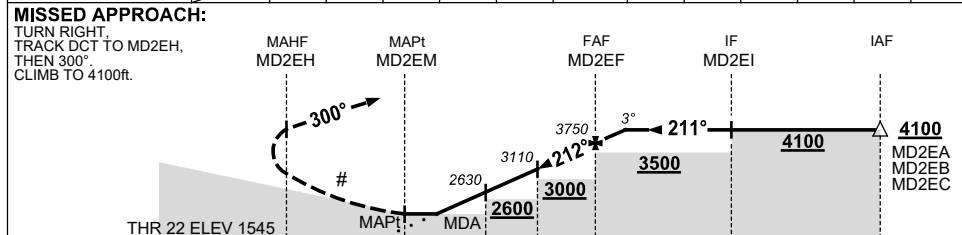
RNP RWY 22
MUDGEES, NSW (YMDG)

13 JUN 2024



AD ELEV 1545
 Bearings are Magnetic
 Elevations in FEET AMSL

NM TO NEXT WPT	MD2EM	1.9	2	3	4	5	MD2EF	1.1					
ALT (3° APCH PATH)		2430	2470	2790	3110	3430	3750	4100					



NOTES

- MAX IAS:
 HOLDING : 210KT.
 INITIAL : 210KT.
 # MISSED APCH TURN : 190KT.
- NO CIRCLING IN SECTOR S OF RWY 04/22 AND E OF RWY 16/34.
- AWIS (PHONE)
 02 9353 6439

CATEGORY	A	B	C	D
LNAV	2430 (885-5.0)			NOT APPLICABLE
CIRCLING *	3110 (1565-2.4)		3520 (1975-4.0)	
ALTERNATE	(2065-4.4)		(2475-6.0)	

Changes: SEGMENT MINIMA, Editorial.

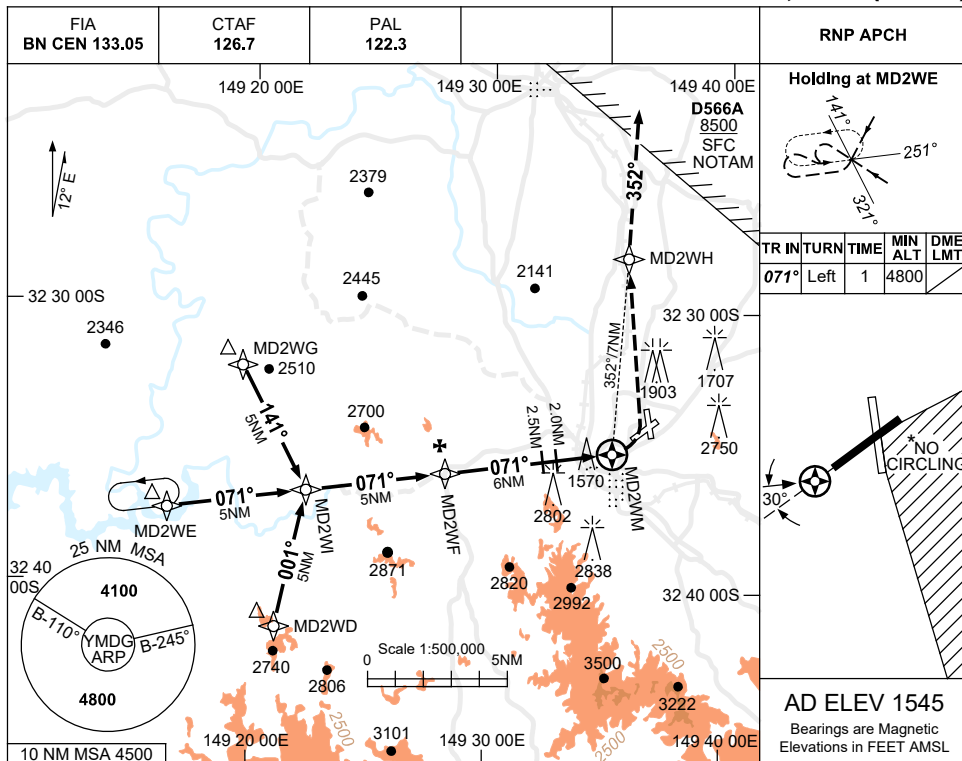
MDGGN01-179

USE QNH

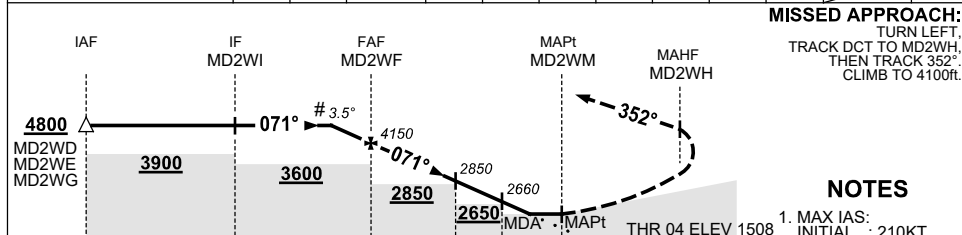
RNP RWY 04

21 MAR 2024

MUDGEES, NSW (YMDG)



NM TO NEXT WPT	1.8	1	MD2WF	5	4	3	2.5	2	1.3	0.9	MD2WM
ALT (# 3.5° APCH PATH)	4800	4520	4150	3780	3400	3030	2850	2660	2390	2260	



CATEGORY	A	B	C	D
LNAV	2390 (882-4.4)		NOT AUTHORISED	NOT APPLICABLE
LNAV (3.3% MAPCH)	2260 (752-3.7)			
CIRCLING*	3110 (1565-2.4)		3520 (1975-4.0)	
ALTERNATE	(2065-4.4)		(2475-6.0)	

Changes: D566A ADDED, Editorial.

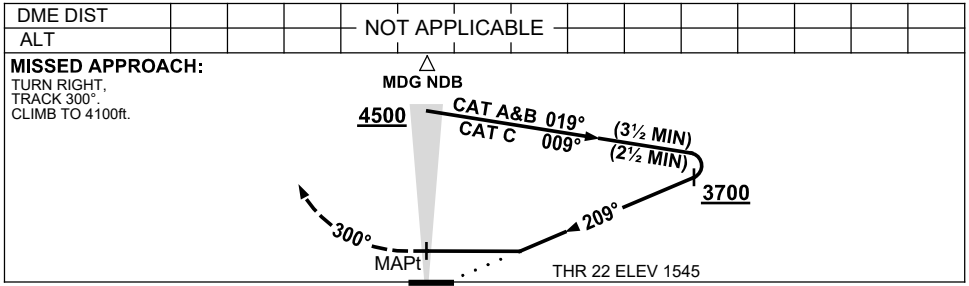
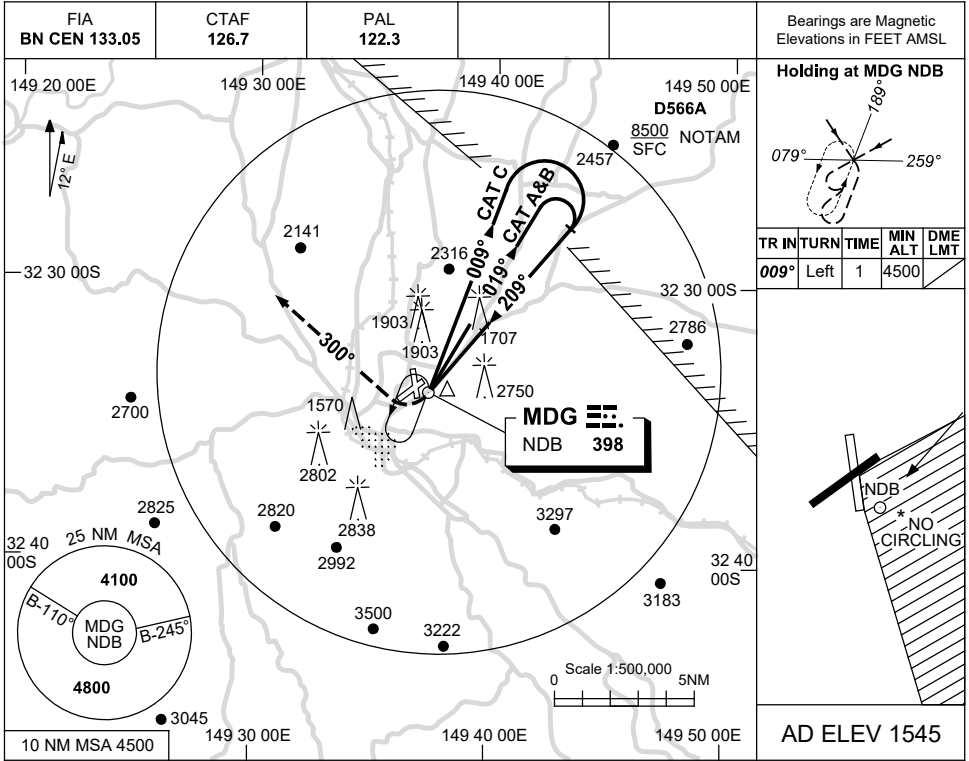
MDGGN02-178

USE QNH

NDB RWY 22

13 JUN 2024

MUDGEЕ, NSW (YMDG)



NOTES

1. MAX IAS:
INITIAL :
CAT A&B 140KT.
CAT C 210KT.
- * 2. NO CIRCLING IN
SECTOR S OF RWY
04/22 AND E OF
RWY 16/34.
3. AWIS (PHONE)
02 9353 6439

CATEGORY	A	B	C	D
S-I NDB	3110 (1565-5.0)			NOT APPLICABLE
CIRCLING *	3110 (1565-2.4)	3520(1975-4.0)		
ALTERNATE	(2065-4.4)		(2475-6.0)	

Changes: CIRCLING MINIMA, ALTERNATE MINIMA.

MDGNB01-179