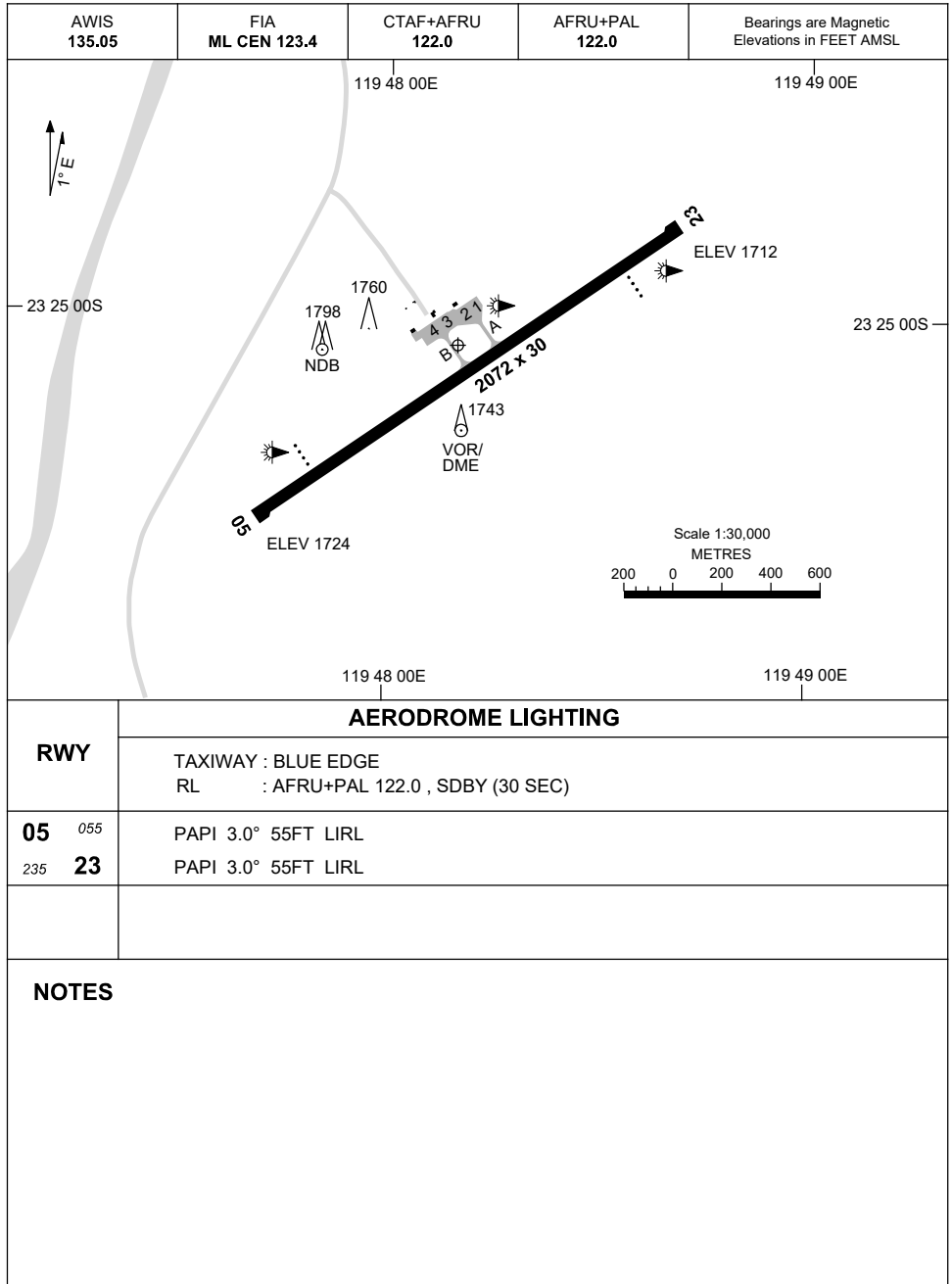


7 SEP 2023

AD ELEV 1724
23 25 04S 119 48 10E

AERODROME CHART
NEWMAN, WA (YNWN)



	AERODROME LIGHTING
RWY	TAXIWAY : BLUE EDGE RL : AFRU+PAL 122.0 , SDBY (30 SEC)
05 <small>055</small>	PAPI 3.0° 55FT LIRL
<small>235</small> 23	PAPI 3.0° 55FT LIRL

NOTES

Changes: NOTES.

NWNAD01-176

DME or GNSS ARRIVAL PROCEDURES NEWMAN, WA (YNWN) Page 1

5 NOV 2020

AWIS 135.05	FIA ML CEN 123.4	CTAF+AFRU 122.0	AFRU+PAL 122.0		Bearings are Magnetic Elevations in FEET AMSL
----------------	---------------------	--------------------	-------------------	--	--

25 NM MSA

4600

3800

R-240°
B-060°

R-030°
B-210°

NWN VOR/DME
NDB

**DME USING NWN DME
REFERENCE WAYPOINT NWN VOR**

NWN NDB 233

NWN VOR/DME 117.2

10 NM MSA 3900

AD ELEV 1724

PBO TO NWN

4600

096°

NWN VOR or NDB

VOR or NDB

3°

3750

3300

2800

MDA

MAPt

2800

3800

096°

MISSED APPROACH:

TRACK 096°.

CLIMB TO 3800FT.

NM TO NWN VOR	25	15	9	5	2	0												
CIRCLING MINIMA	A,B: 2500-2.4			C: 2730-4.0			D: 2860-5.0											
NM TO NWN VOR	7.7	7	6	5	4	3	2.2	2	1.8	1.1								
ALT (3° APCH PATH)	4600	4390	4070	3750	3430	3110	2860	2800	2730	2500								

BORAH TO NWN

4600

158°

NWN VOR or NDB

VOR or NDB

3°

3750

3400

2800

MDA

MAPt

2800

3800

158°

MISSED APPROACH:

TRACK 158°.

CLIMB TO 3800FT.

NM TO NWN VOR	25	15	10	5	2	0												
CIRCLING MINIMA	A,B: 2500-2.4			C: 2730-4.0			D: 2860-5.0											
NM TO NWN VOR	7.7	7	6	5	4	3	2.2	2	1.8	1.1								
ALT (3° APCH PATH)	4600	4390	4070	3750	3430	3110	2860	2800	2730	2500								

DAMPU TO NWN

4100

212°

NWN VOR or NDB

VOR or NDB

3°

3410

3300

2600

MDA

MAPt

2760

4600

212°

MISSED APPROACH:

TRACK 212°.

CLIMB TO 4600FT.

NM TO NWN VOR	25	15	10	6	5	4												
CIRCLING MINIMA	A,B: 2500-2.4			C: 2730-4.0			D: 2860-5.0											
NM TO NWN VOR	8.2	8	7	6	5	4.3	4	3.9	3.1									
ALT (3° APCH PATH)	4100	4050	3730	3410	3090	2860	2760	2730	2500									

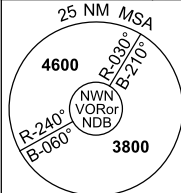
Changes: Editorial.

NWWDG01-165

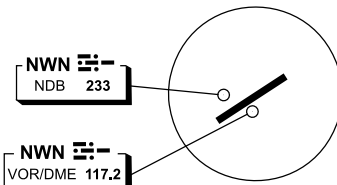
DME or GNSS ARRIVAL PROCEDURES NEWMAN, WA (YNWN) Page 2

13 NOV 2014

AWIS 135.05	FIA ML CEN 123.4	CTAF+AFRU 122.0	AFRU+PAL 122.0		Bearings are Magnetic Elevations in FEET AMSL
----------------	---------------------	--------------------	-------------------	--	--



DME USING NWN DME REFERENCE WAYPOINT NWN VOR



10 NM MSA 3900

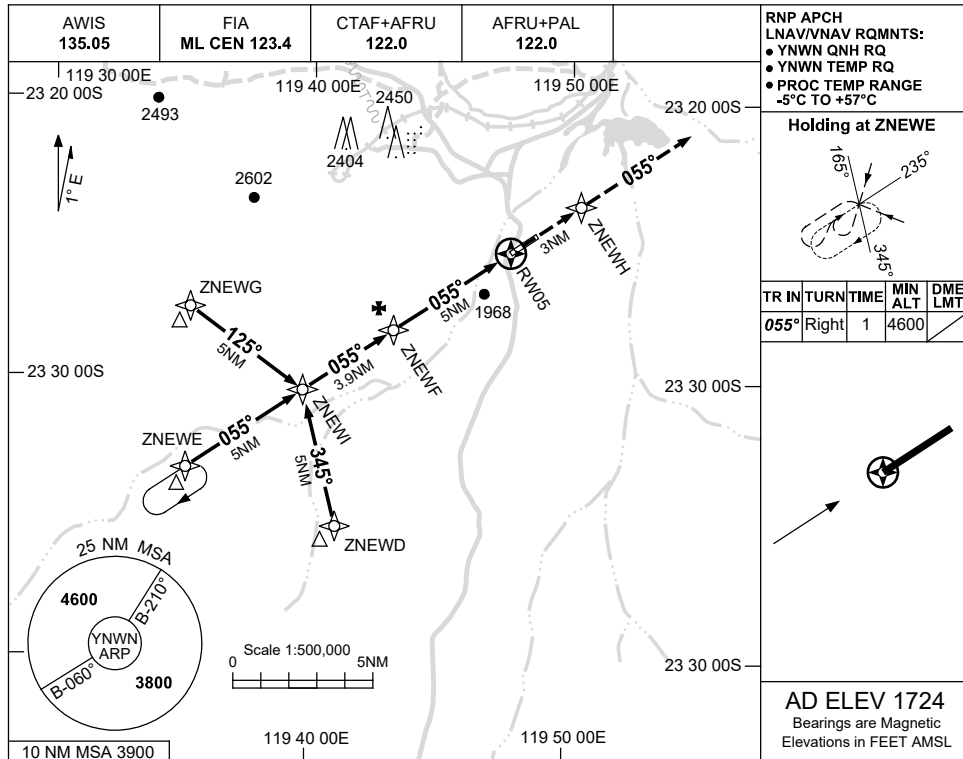
AD ELEV 1724

ALL OTHER ROUTES TO NWN VOR or NDB	△									MISSED APPROACH: CLIMB ON TRACK TO 4600FT.					
	NM FM VOR	25	15	9	5	2	0								
CIRCLING MINIMA			A,B: 2810-2.4		C: 2810-4.0		D: 2860-5.0								
NM FM VOR	6.4	6	5	4	3	2	1	0.9	0.7						
ALT (3° APCH PATH)	4600	4470	4150	3830	3510	3200	2880	2860	2810						

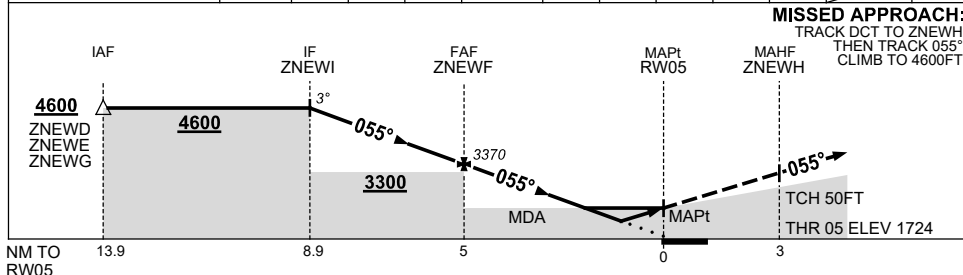
USE QNH

RNP RWY 05
NEWMAN, WA (YNWN)

30 NOV 2023



NM TO NEXT WPT	ZNEWI	3	2	1	ZNEWF	4	3	2	1.7	1.3	RWY05
ALT (3° APCH PATH)	4600	4320	4000	3680	3370	3050	2730	2410	2330	2180	



NOTES

CATEGORY	A	B	C	D
LNAV/VNAV		2180 (456-2.6)		
LNAV		2330 (606-3.4)		
CIRCLING	2500 (776-2.4)		2730 (1006-4.0)	2860 (1136-5.0)
ALTERNATE	(1276-4.4)		(1506-6.0)	(1636-7.0)

1. MAX IAS:
 INITIAL : 230KLT.

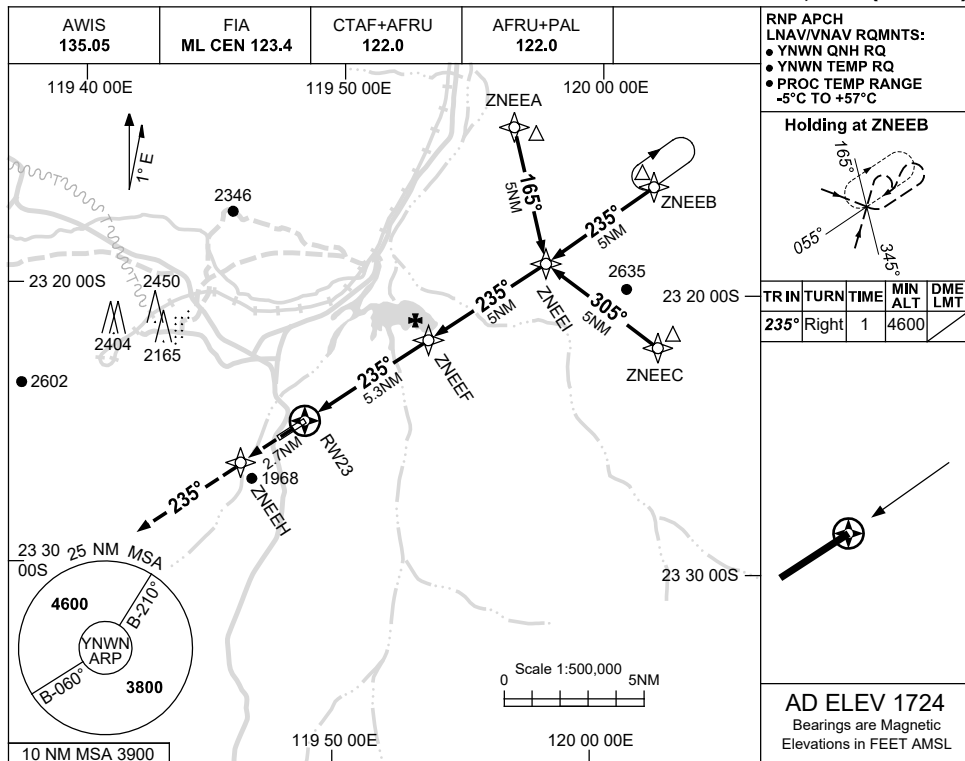
Changes: CHART TITLE, PBN SPECIFICATION BOX, Editorial.

NWNGN01-177

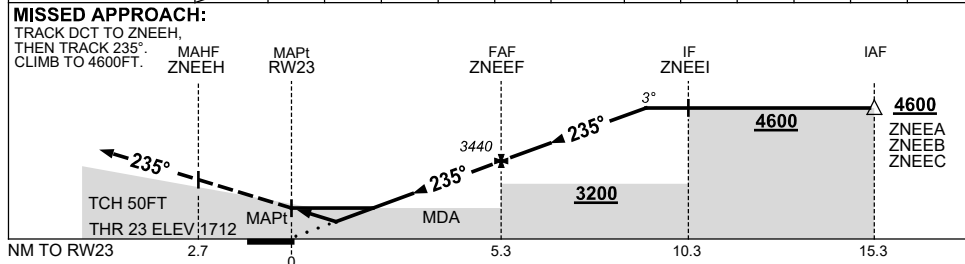
USE QNH

RNP RWY 23
NEWMAN, WA (YNWN)

30 NOV 2023



NM TO NEXT WPT	RW23	1	1.6	2	3	4	ZNEEF	1	2	3	3.6		
ALT (3° APCH PATH)		2070	2260	2400	2720	3040	3440	3760	4080	4390	4600		



NOTES

CATEGORY	A	B	C	D
LNAV/VNAV		2070 (358-2.0)		
LNAV		2260 (548-3.1)		
CIRCLING	2500 (776-2.4)		2730 (1006-4.0)	2860 (1136-5.0)
ALTERNATE	(1276-4.4)		(1506-6.0)	(1636-7.0)

1. MAX IAS:
 INITIAL : 230KT.

Changes: CHART TITLE, PBN SPECIFICATION BOX, Editorial.

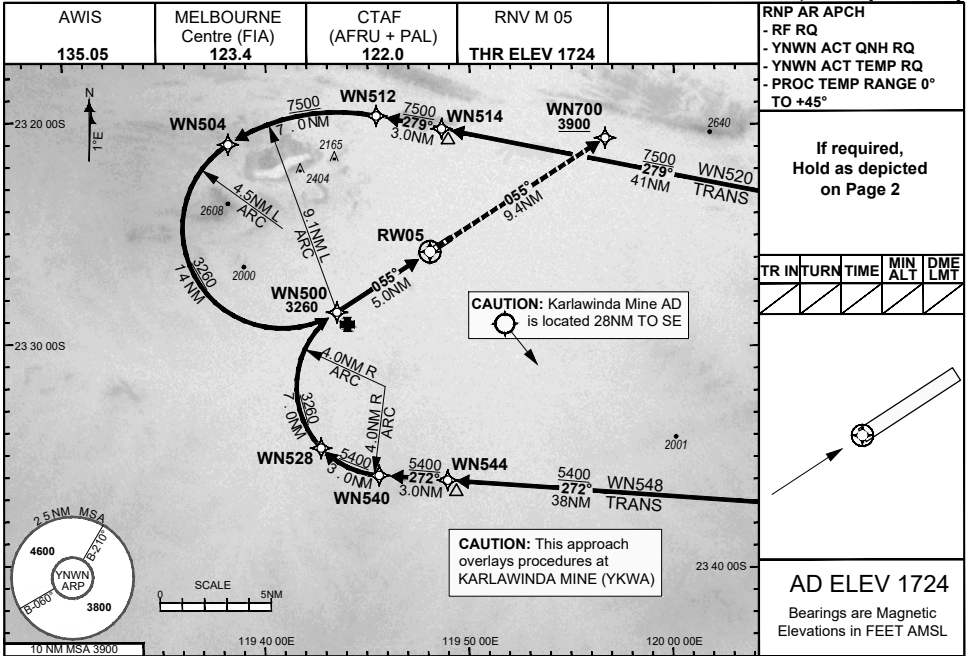
NWNGN02-177

FOR CASA APPROVED OPERATORS ONLY

30 NOV 2023

USE QNH

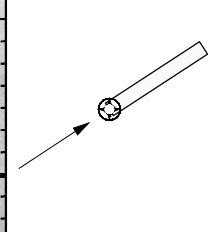
NEWMAN, WA (YWNW)



RNP AR APCH
 - RF RQ
 - YWNW ACT QNH RQ
 - YWNW ACT TEMP RQ
 - PROC TEMP RANGE 0° TO +45°

If required, Hold as depicted on Page 2

TR	INT	TURN	TIME	MIN ALT	DME LMT

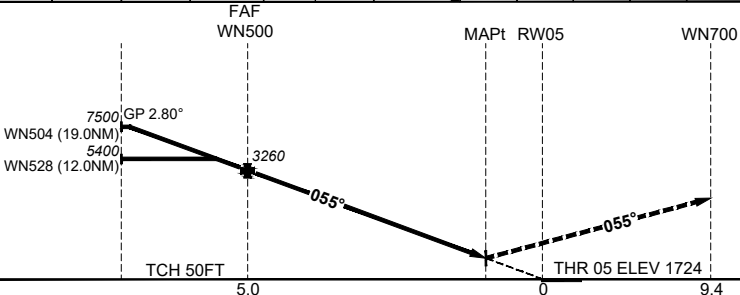


AD ELEV 1724
 Bearings are Magnetic Elevations in FEET AMSL

DISTANCE FM THR	WN504	WN528	WN500	0.9	0.8	RW05			
ALT (2.80° APCH PATH)	7500	5400	3260	2030	2024				

MISSED APPROACH:
 Climb to 3900FT via the RNP AR Missed Approach track to WN700. Acceleration altitude 2700FT QNH.

ENGINE OUT MISSED APPROACH:
 SEE Page 2



NM FM THR

NOTES

- 1) Lateral transition to MAP must not be initiated prior to DA(H) PSN.
- 2) PAPI and glidepath not coincident.
- 3) Minimum MAP gradient (All Engines) 3.3% to 3900FT.
- 4) CAUTION: This approach overlays procedures at KARLAWINDA MINE (YKWA).

CATEGORY	A	B	C	D
RNP (0.10)	NOT APPLICABLE		DA(H) 2024' (300)-1.6	
RNP (0.30)	NOT APPLICABLE		DA(H) 2030' (306)-1.6	
CIRCLING	NOT AUTHORISED			

202308101012COPYRIGHT 2023 NAVERUS, INC. USA, GE PROPRIETARY INFORMATION

Changes: EDITORIAL, KARLAWINDA ADD MINE, RNAV (RNP) TO RNP AR, RNP AR NOTES, REMOVED B737 NOTE

NWNGN03-177

DO NOT USE FOR NAVIGATION

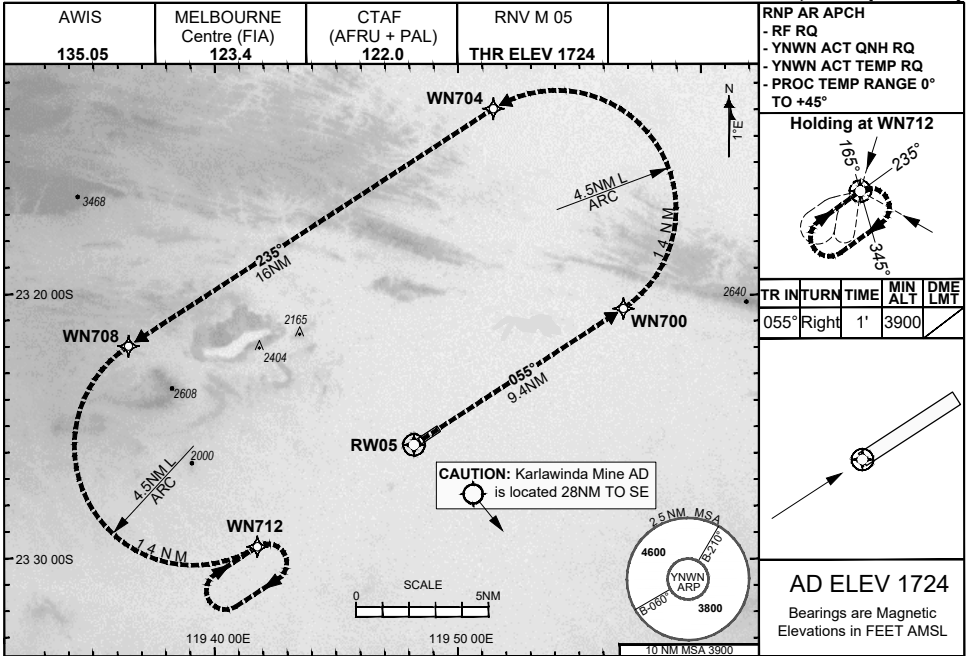
Prepared by GE Aviation



30 NOV 2023

USE QNH

NEWMAN, WA (YNWN)



ENGINE OUT MISSED APPROACH:

Track via the RNP AR Engine Out Missed Approach track to WN712 and hold as published.

Acceleration altitude 2700FT QNH (1000FT AGL).
Climb to 3900FT.

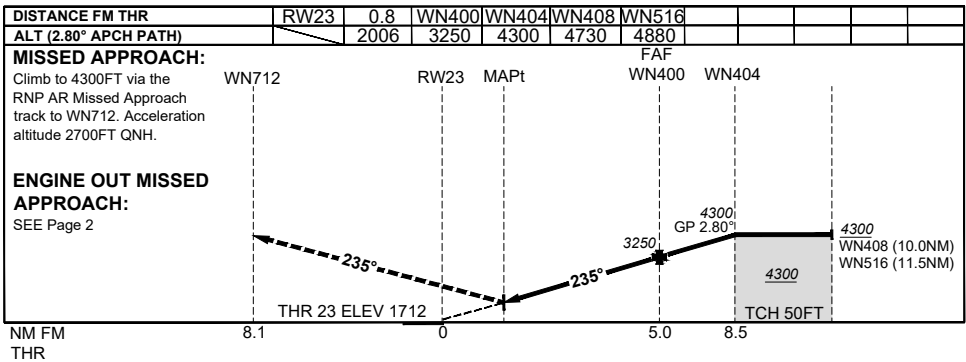
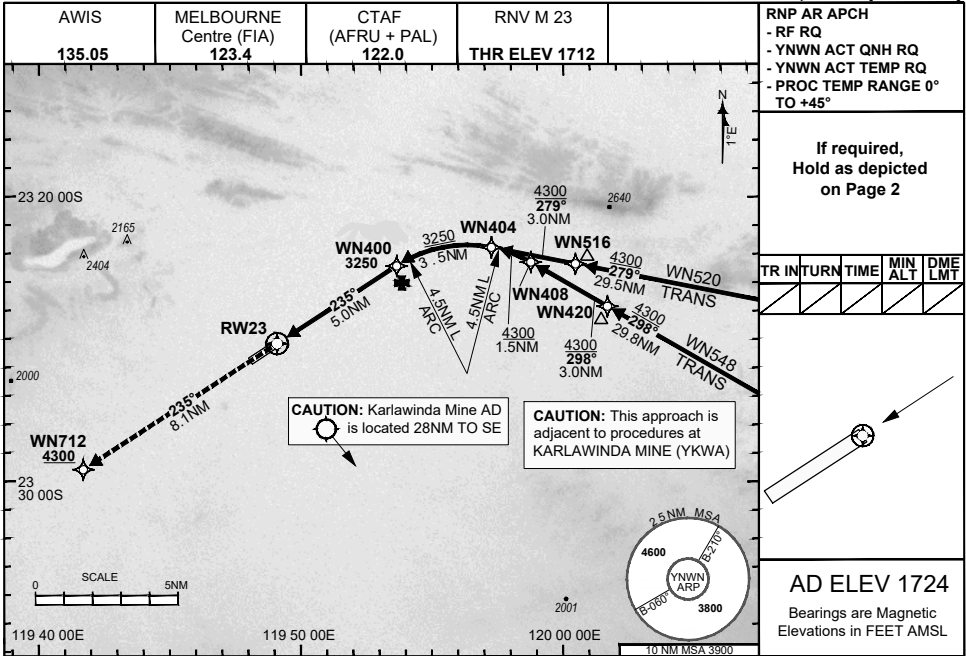


FOR CASA APPROVED OPERATORS ONLY

30 NOV 2023

USE QNH

NEWMAN, WA (YNWN)



NOTES

- 1) Lateral transition to MAP must not be initiated prior to DA(H) PSN.
- 2) PAPI and glidepath not coincident.
- 3) Minimum MAP gradient (All Engines) 4.6% to 4300FT.
- 4) CAUTION: This approach is adjacent to procedures at KARLAWINDA MINE (YKWA).

CATEGORY	A	B	C	D
RNP (0.30)	NOT APPLICABLE		DA(H) 2006' (294)-1.6	
CIRCLING	NOT AUTHORISED			

202308101015COPYRIGHT 2023 NAVERUS, INC. USA, GE PROPRIETARY INFORMATION

Changes: EDITORIAL, KARLAWINDA ADD MINE, RNAV (RNP) TO RNP AR, RNP AR NOTES, REMOVED B737 NOTE

NWNGN05-177

DO NOT USE FOR NAVIGATION

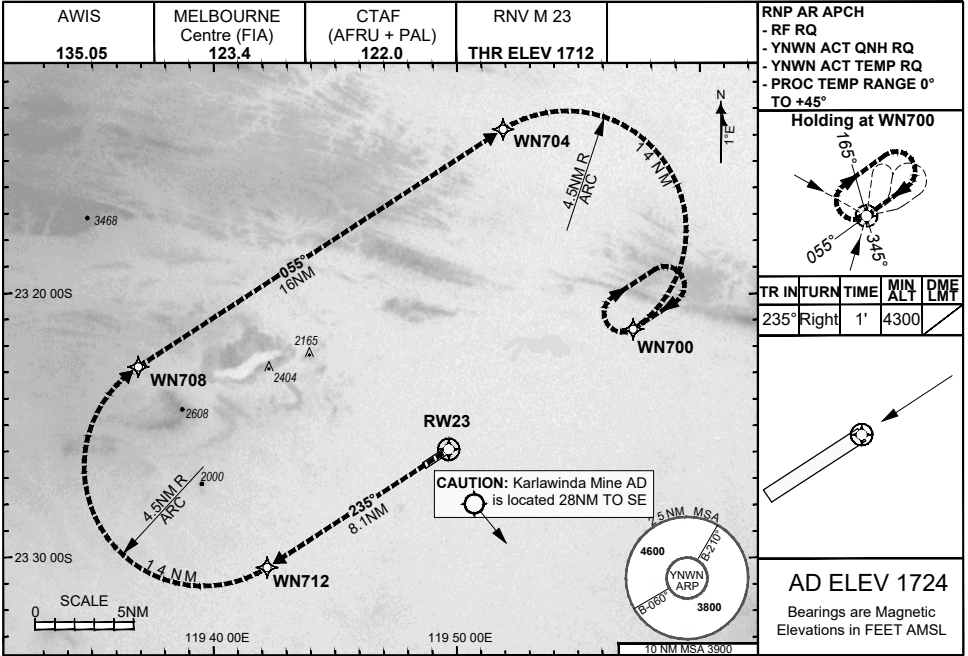
Prepared by GE Aviation



30 NOV 2023

USE QNH

NEWMAN, WA (YNWN)



ENGINE OUT MISSED APPROACH:

Track via the RNP AR Engine Out Missed Approach track to WN700 and hold as published.

Acceleration altitude 2700FT QNH (1000FT AGL).
Climb to 4300FT.

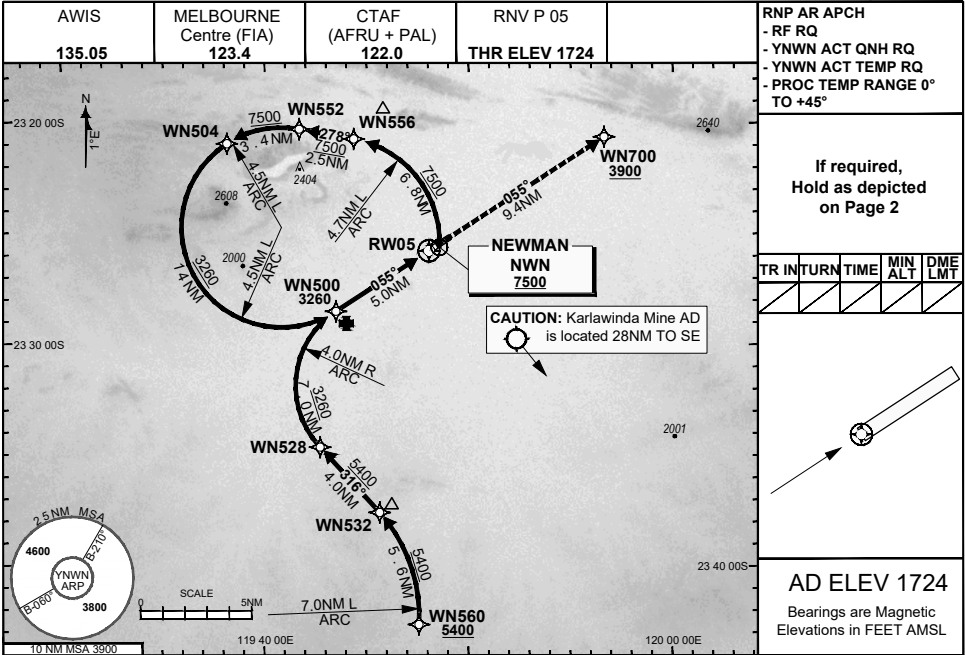


FOR CASA APPROVED OPERATORS ONLY

30 NOV 2023

USE QNH

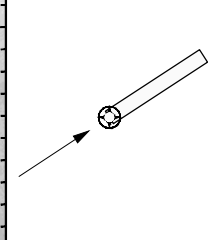
NEWMAN, WA (YNWN)



RNP AR APCH
 - RF RQ
 - YNWN ACT QNH RQ
 - YNWN ACT TEMP RQ
 - PROC TEMP RANGE 0° TO +45°

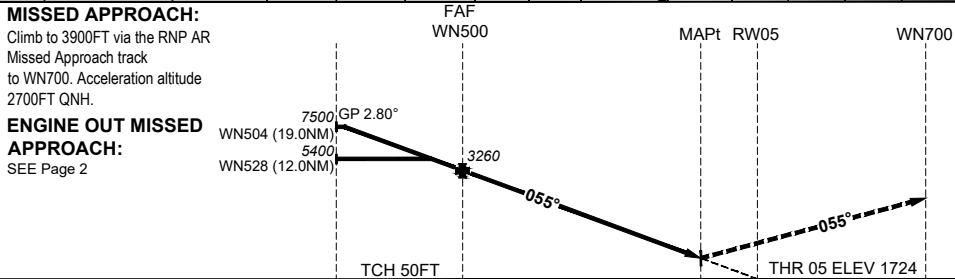
If required,
 Hold as depicted
 on Page 2

TR	INT	TURN	TIME	MIN ALT	DME LMT



AD ELEV 1724
 Bearings are Magnetic
 Elevations in FEET AMSL

DISTANCE FM THR	WN504	WN528	WN500	0.9	0.8	RW05			
ALT (2.80° APCH PATH)	7500	5400	3260	2030	2024				



NM FM THR

THR

CATEGORY	A	B	C	D
RNP (0.10)	NOT APPLICABLE		DA(H) 2024' (300)-1.6	
RNP (0.30)	NOT APPLICABLE		DA(H) 2030' (306)-1.6	
CIRCLING	NOT AUTHORISED			

- NOTES**
- 1) Lateral transition to MAP must not be initiated prior to DA(H) PSN.
 - 2) PAPI and glidepath not coincident.
 - 3) Minimum MAP gradient (All Engines) 3.3% to 3900FT.

202308101020COPYRIGHT 2023 NAVERUS, INC. USA, GE PROPRIETARY INFORMATION

Changes: EDITORIAL, YKWA NAME, RNAV (RNP) TO RNP AR, RNP AR NOTES, 119 60 TO 120 00, NOTE 4) REMOVED

DO NOT USE FOR NAVIGATION

NWNGN07-177

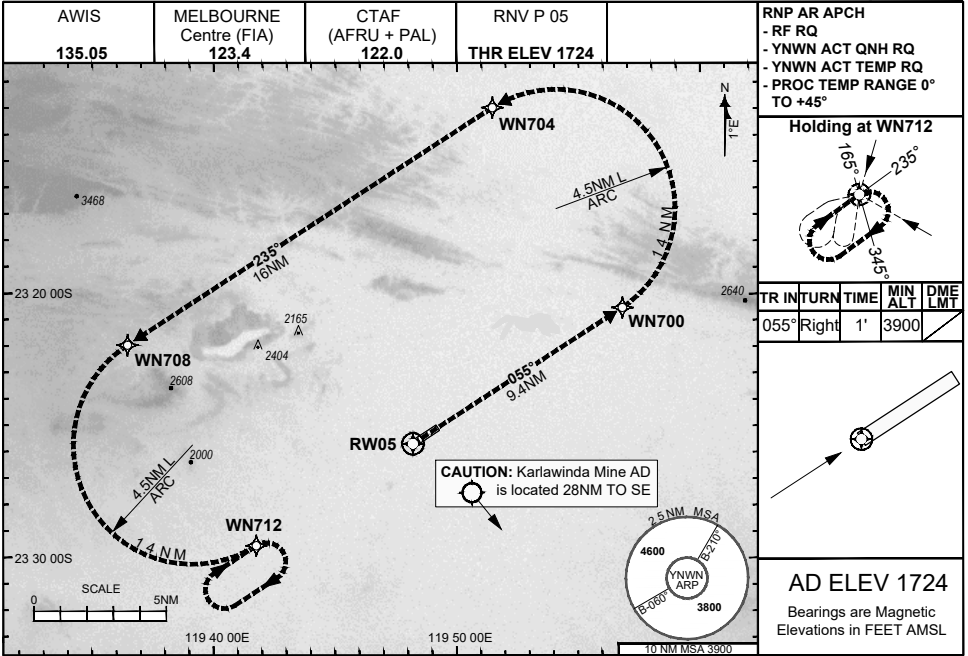
Prepared by GE Aviation



30 NOV 2023

USE QNH

NEWMAN, WA (YNWN)



ENGINE OUT MISSED APPROACH:

Track via the RNP AR Engine Out Missed Approach track to WN712 and hold as published.

Acceleration altitude 2700FT QNH (1000FT AGL).
Climb to 3900FT.

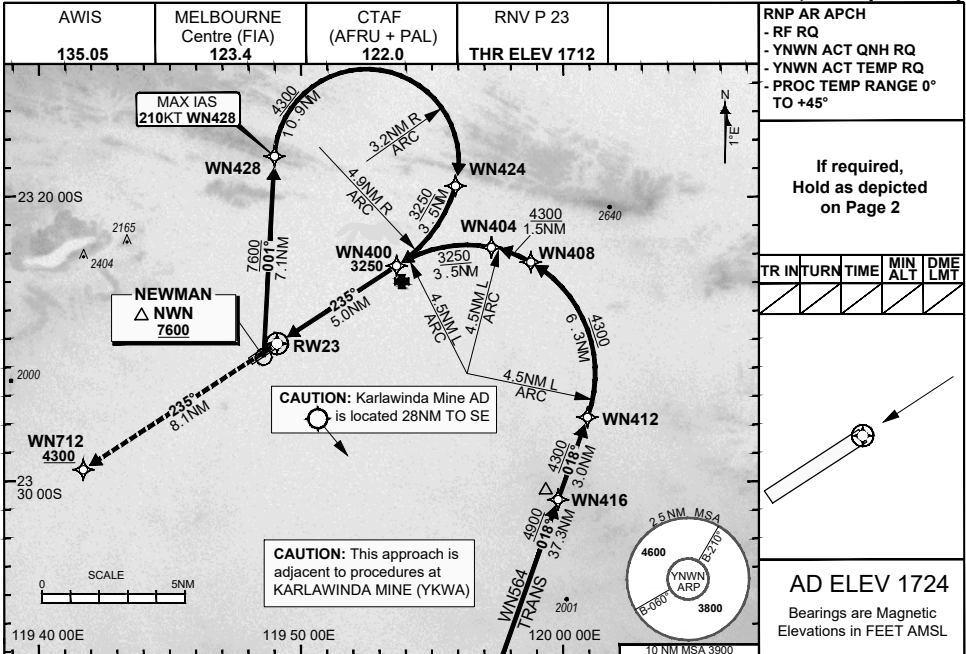


FOR CASA APPROVED OPERATORS ONLY

30 NOV 2023

USE QNH

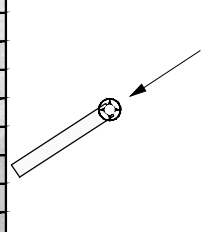
NEWMAN, WA (YNWN)



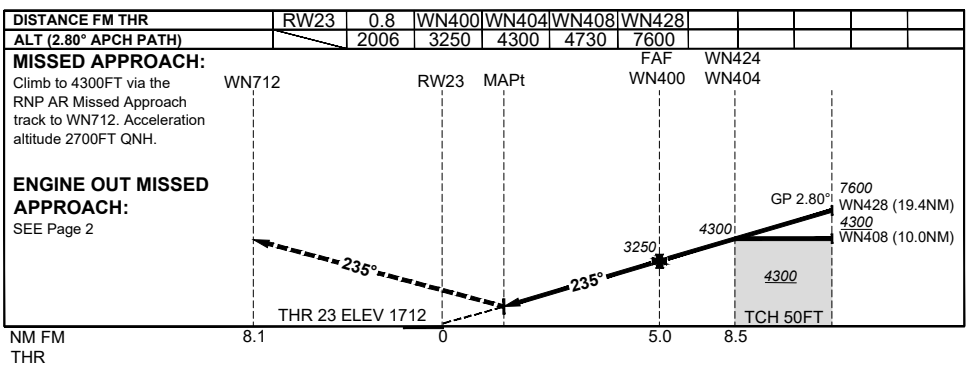
RNP AR APCH
 - RF RQ
 - YNWN ACT QNH RQ
 - YNWN ACT TEMP RQ
 - PROC TEMP RANGE 0° TO +45°

If required, Hold as depicted on Page 2

TR	INT	TURN	TIME	MIN ALT	DME LMT



AD ELEV 1724
 Bearings are Magnetic Elevations in FEET AMSL



NOTES

- 1) Lateral transition to MAP must not be initiated prior to DA(H) PSN.
- 2) PAPI and glidepath not coincident.
- 3) Minimum MAP gradient (All Engines) 4.6% to 4300FT.
- 4) CAUTION: This approach is adjacent to procedures at KARLAWINDA MINE (YKWA).

CATEGORY	A	B	C	D
RNP (0.30)	NOT APPLICABLE		DA(H) 2006' (294)-1.6	
CIRCLING	NOT AUTHORISED			

202308101021COPYRIGHT 2023 NAVERUS, INC. USA, GE PROPRIETARY INFORMATION
 Changes: EDITORIAL, KARLAWINDA ADD MINE, RNAV (RNP) TO RNP AR, RNP AR NOTES, REMOVED B737 NOTE NWNGN09-177

DO NOT USE FOR NAVIGATION

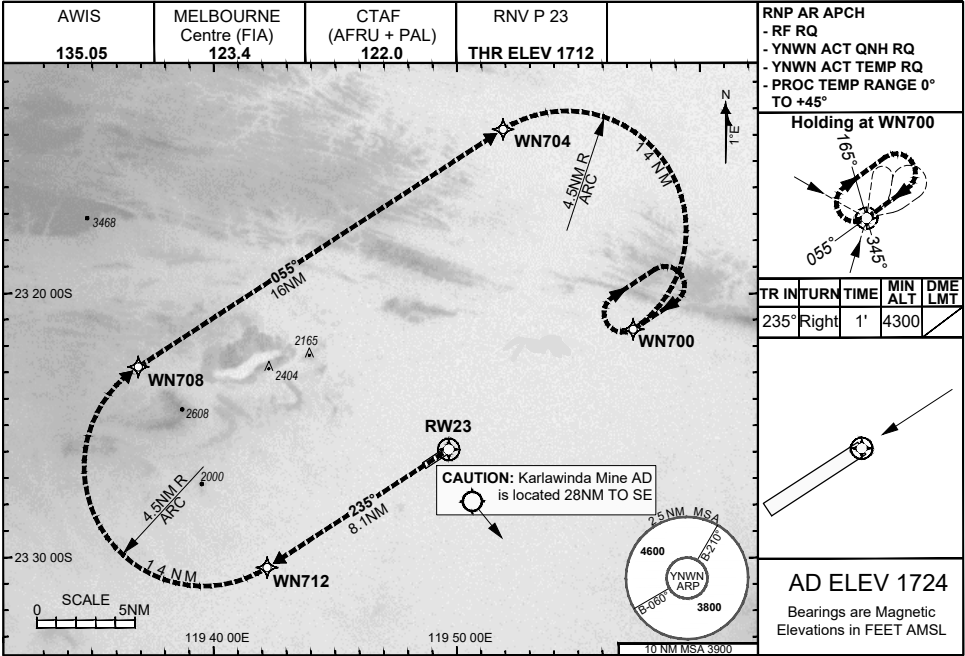
Prepared by GE Aviation



30 NOV 2023

USE QNH

NEWMAN, WA (YNWN)



ENGINE OUT MISSED APPROACH:

Track via the RNP AR Engine Out Missed Approach track to WN700 and hold as published.

Acceleration altitude 2700FT QNH (1000FT AGL).
Climb to 4300FT.

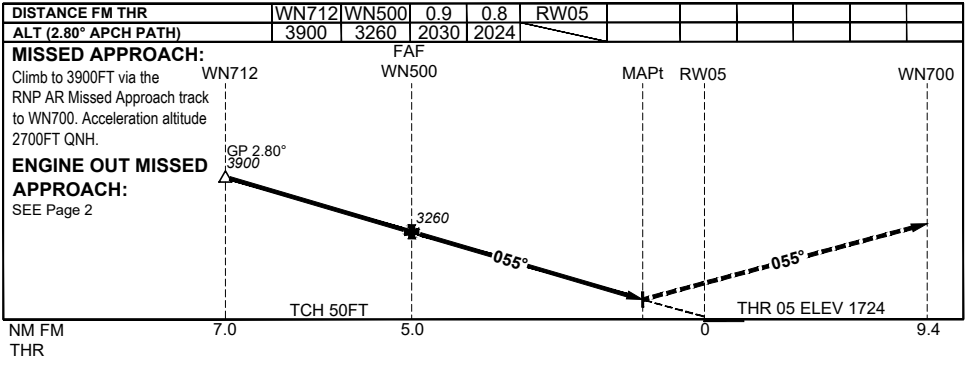
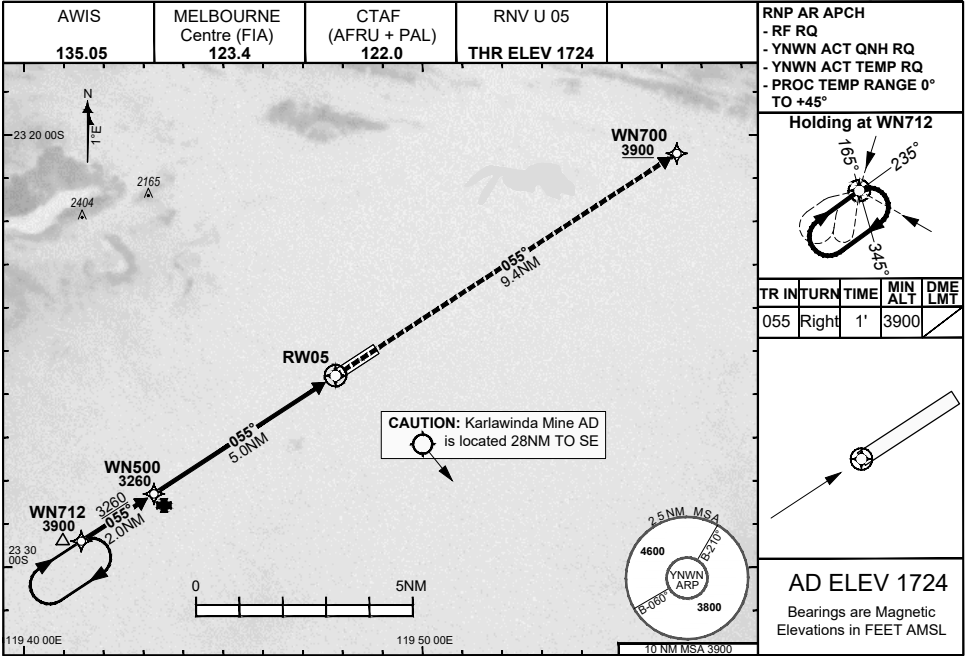


FOR CASA APPROVED OPERATORS ONLY

30 NOV 2023

USE QNH

NEWMAN, WA (YNNW)



NOTES

CATEGORY	A	B	C	D
RNP (0.10)	NOT APPLICABLE		DA(H) 2024' (300)-1.6	
RNP (0.30)	NOT APPLICABLE		DA(H) 2030' (306)-1.6	
CIRCLING	NOT AUTHORISED			

- 1) Lateral transition to MAP must not be initiated prior to DA(H) PNL.
- 2) PAPI and glidepath not coincident.
- 3) Minimum MAP gradient (All Engines) 3.3% to 3900FT.

202308101023COPYRIGHT 2023 NAVERUS, INC. USA, GE PROPRIETARY INFORMATION
 Changes: EDITORIAL, KARLAWINDA ADD MINE, RNAV (RNP) TO RNP AR, RNP AR NOTES, NOTE 4) REMOVED NWNGN11-177

DO NOT USE FOR NAVIGATION

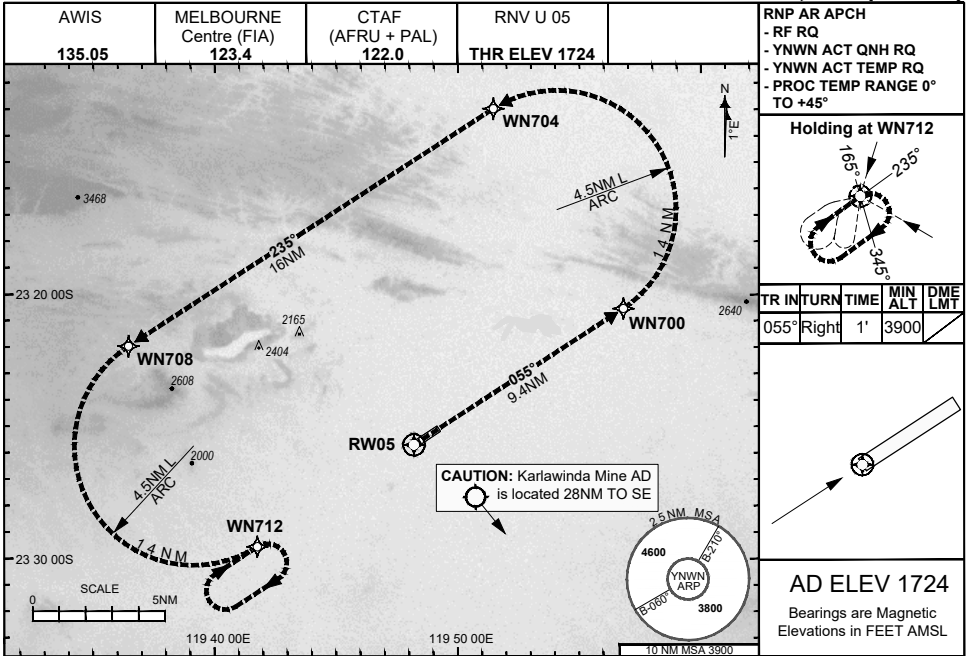
Prepared by GE Aviation



30 NOV 2023

USE QNH

NEWMAN, WA (YNNW)



ENGINE OUT MISSED APPROACH:

Track via the RNP AR Engine Out Missed Approach track to WN712 and hold as published.

Acceleration altitude 2700FT QNH (1000FT AGL).
Climb to 3900FT.

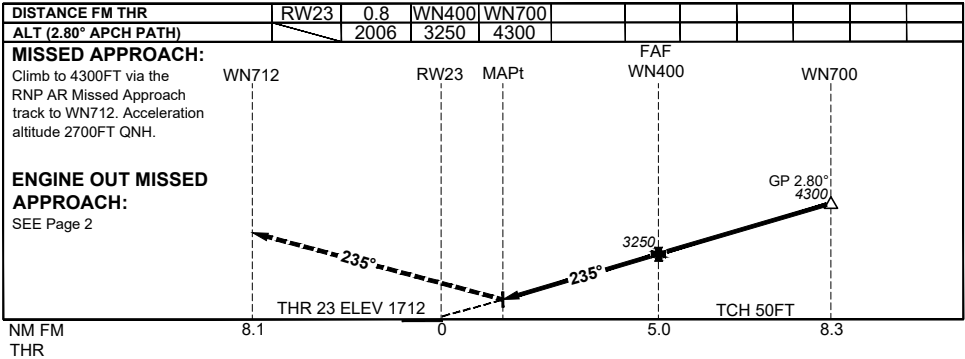
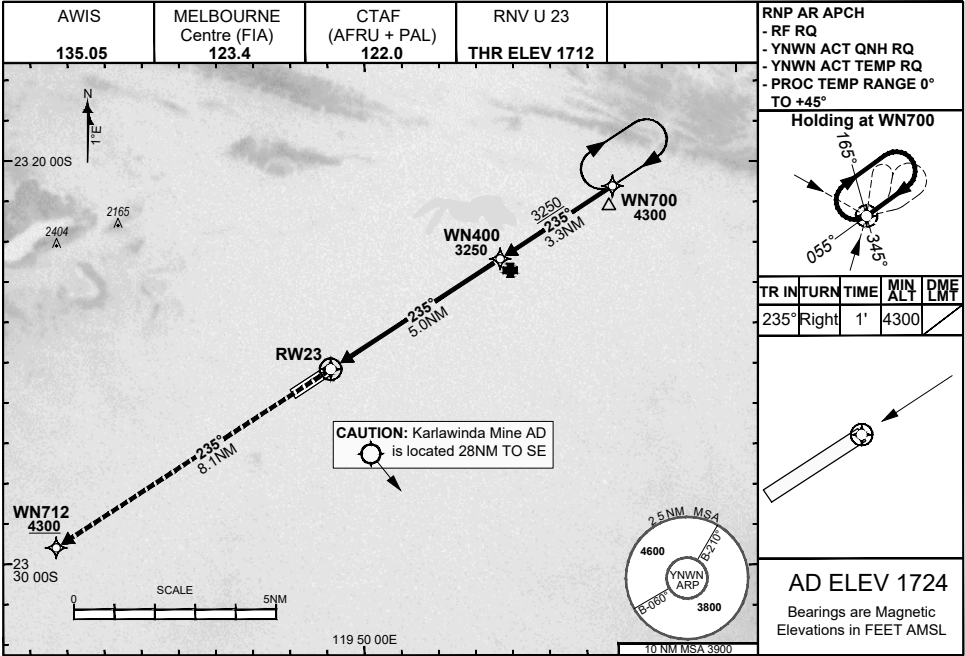


FOR CASA APPROVED OPERATORS ONLY

30 NOV 2023

USE QNH

NEWMAN, WA (YNWN)



NOTES

- 1) Lateral transition to MAP must not be initiated prior to DA(H) PNP.
- 2) PAPI and glidepath not coincident.
- 3) Minimum MAP gradient (All Engines) 4.6% to 4300FT.

CATEGORY	A	B	C	D
RNP (0.30)	NOT APPLICABLE		DA(H) 2006' (294)-1.6	
CIRCLING	NOT AUTHORISED			

202308101024COPYRIGHT 2023 NAVERUS, INC. USA, GE PROPRIETARY INFORMATION
 Changes: EDITORIAL, KARLAWINDA ADD MINE, RNAV (RNP) TO RNP AR, RNP AR NOTES, NOTE 4) REMOVED NWNGN13-177

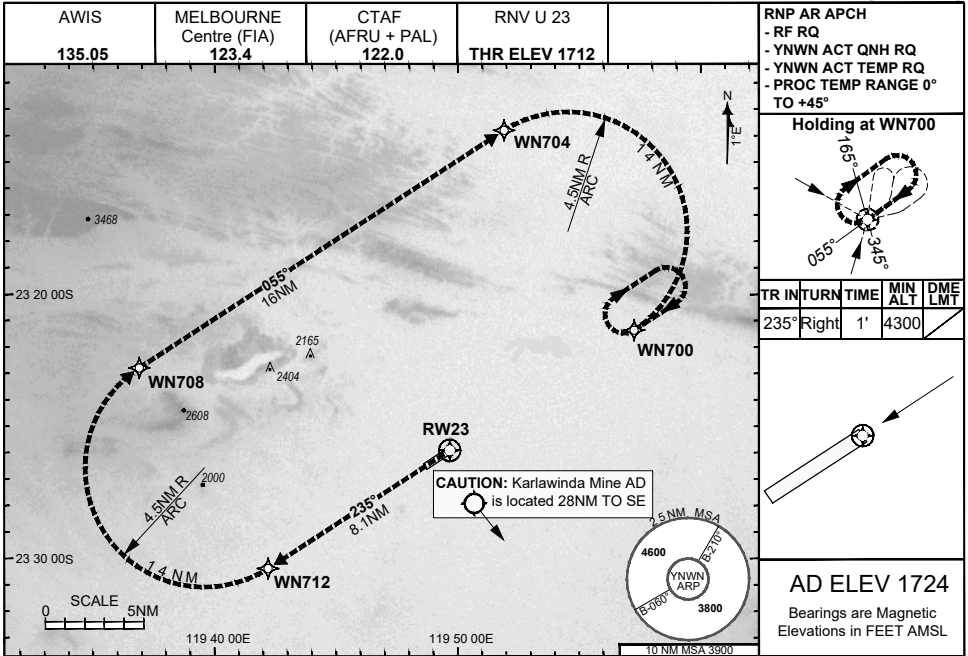
DO NOT USE FOR NAVIGATION
Prepared by GE Aviation



30 NOV 2023

USE QNH

NEWMAN, WA (YNWN)



ENGINE OUT MISSED APPROACH:

Track via the RNP AR Engine Out Missed Approach track to WN700 and hold as published.

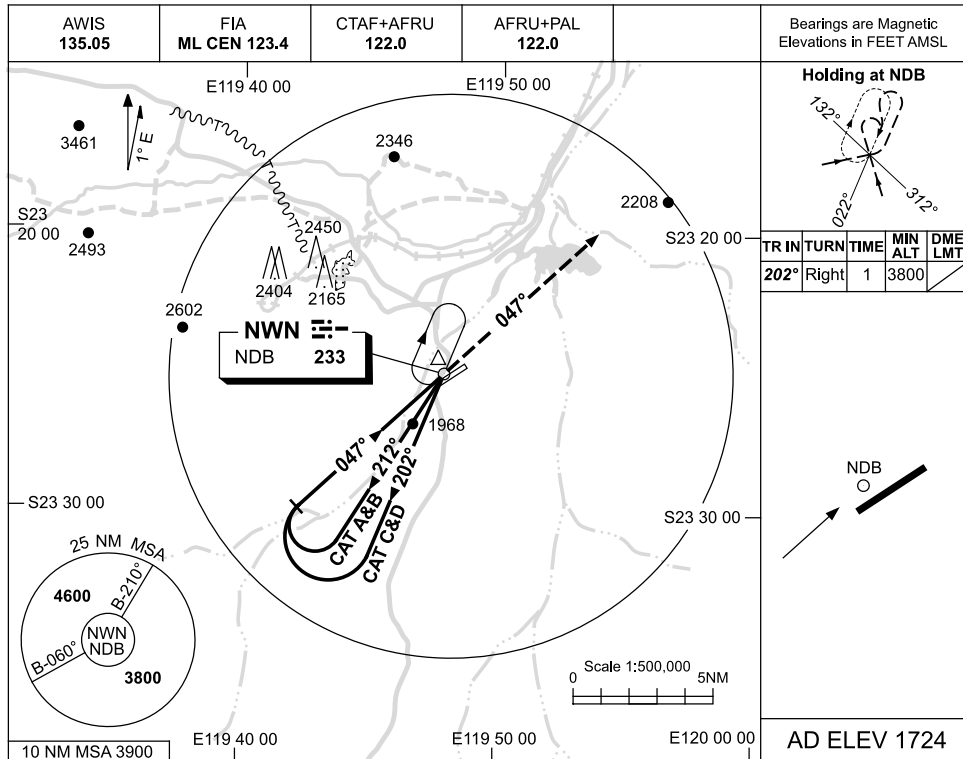
Acceleration altitude 2700FT QNH (1000FT AGL).
Climb to 4300FT.



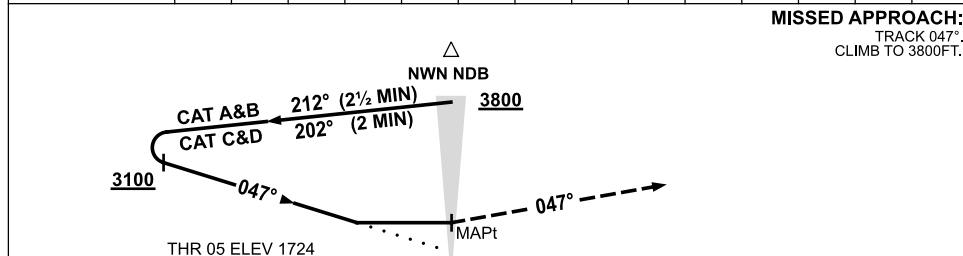
USE QNH

NDB RWY 05
NEWMAN, WA (YNWN)

26 MAY 2016



DME DIST									
ALT			NOT APPLICABLE						



NOTES

CATEGORY	A	B	C	D
S-I NDB	2500 (776-4.4)			
CIRCLING	2500 (776-2.4)	2730 (1006-4.0)	2860 (1136-5.0)	
ALTERNATE	(1276-4.4)	(1506-6.0)	(1636-7.0)	

1. MAX IAS:
 INITIAL : 210KT.

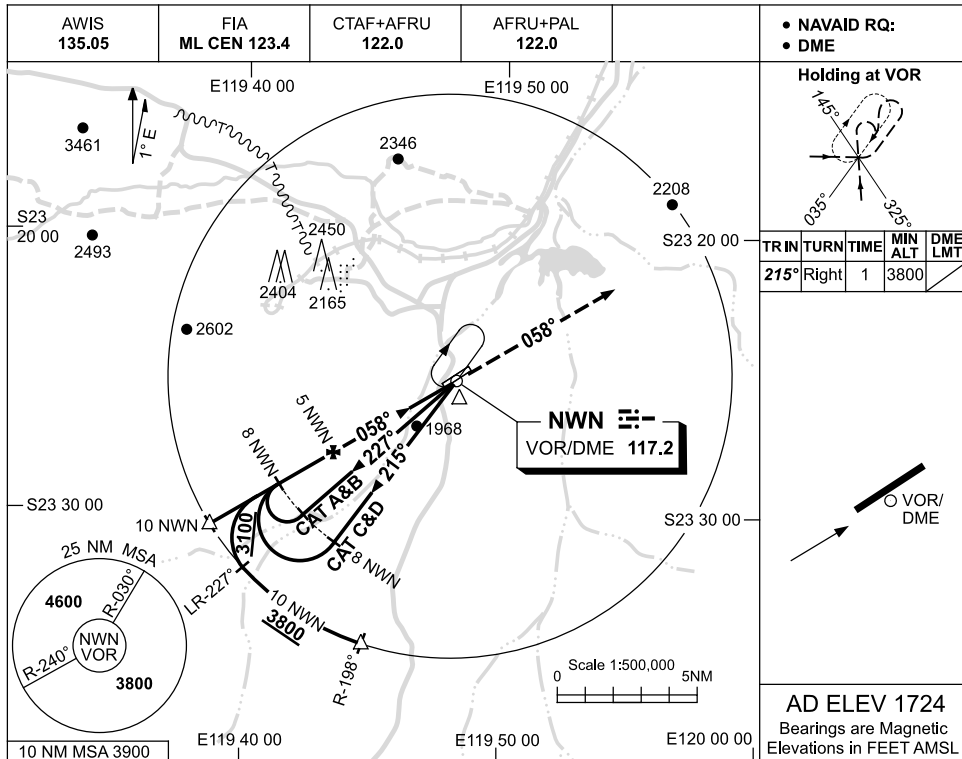
Changes: MAG VAR, D137 DELETED.

NWNNB01-147

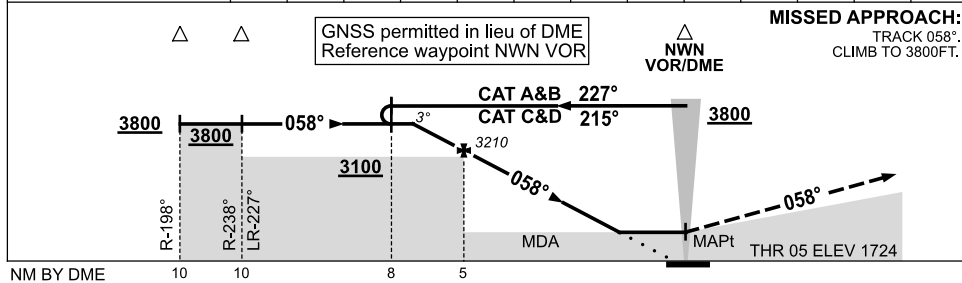
USE QNH

VOR-Z RWY 05
NEWMAN, WA (YNWN)

18 AUG 2016



DIST FM NWN DME	6.9	6	5	4	3	2.5								
ALT (3° APCH PATH)	3800	3530	3210	2890	2570	2410								



NOTES

CATEGORY	A	B	C	D
S-I VOR/DME	2410 (686-3.9)			
CIRCLING	2500 (776-2.4)	2730 (1006-4.0)	2860 (1136-5.0)	
ALTERNATE	(1276-4.4)	(1506-6.0)	(1636-7.0)	

1. MAX IAS:
 INITIAL : 210KT.

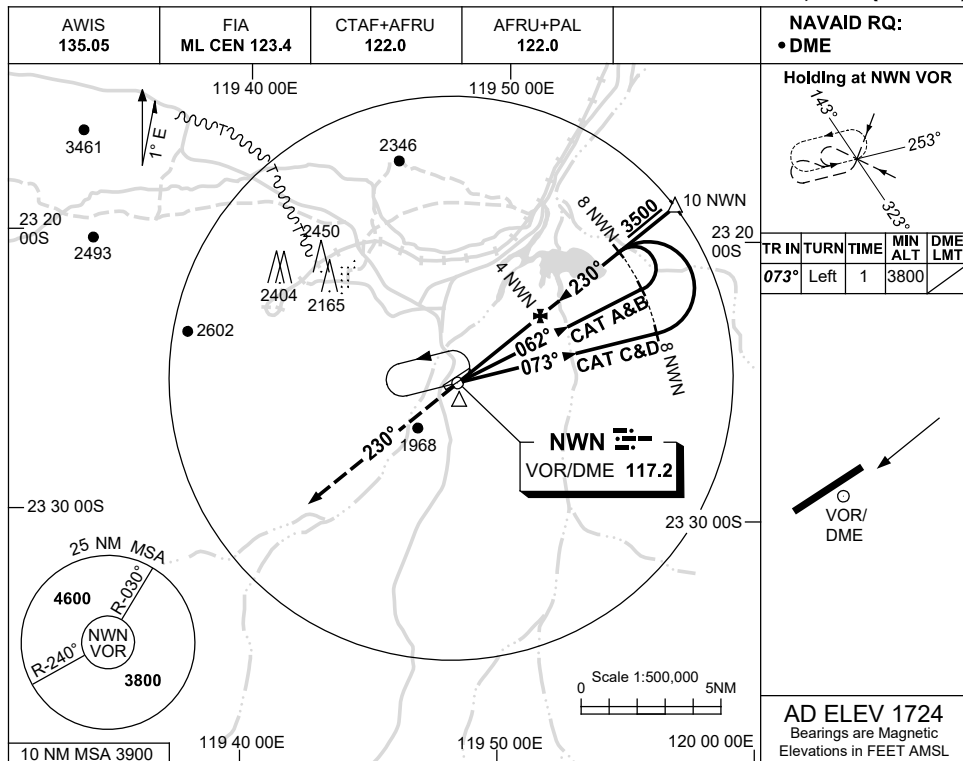
Changes: TIME LIMITS DELETED, Editorial.

NWNVO01-148

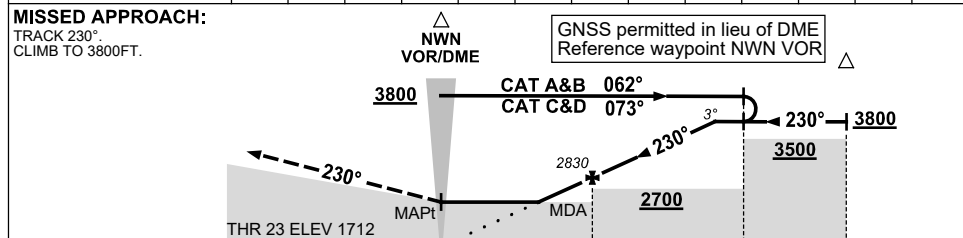
USE QNH

VOR RWY 23
NEWMAN, WA (YNWN)

24 MAR 2022



DIST TO NWN DME	2.2	3	4	5	6	7	7.1						
ALT (3° APCH PATH)	2260	2510	2830	3150	3470	3790	3800						



NOTES

CATEGORY	A	B	C	D
S-I VOR/DME	2260 (548-3.1)			
CIRCLING	2500 (776-2.4)		2730 (1006-4.0)	
ALTERNATE	(1276-4.4)		(1636-7.0)	

1. MAX IAS:
 INITIAL : 210KT.

Changes: MIN SEGMENT ALTITUDE CORRECTION.

NWNVO02-170

