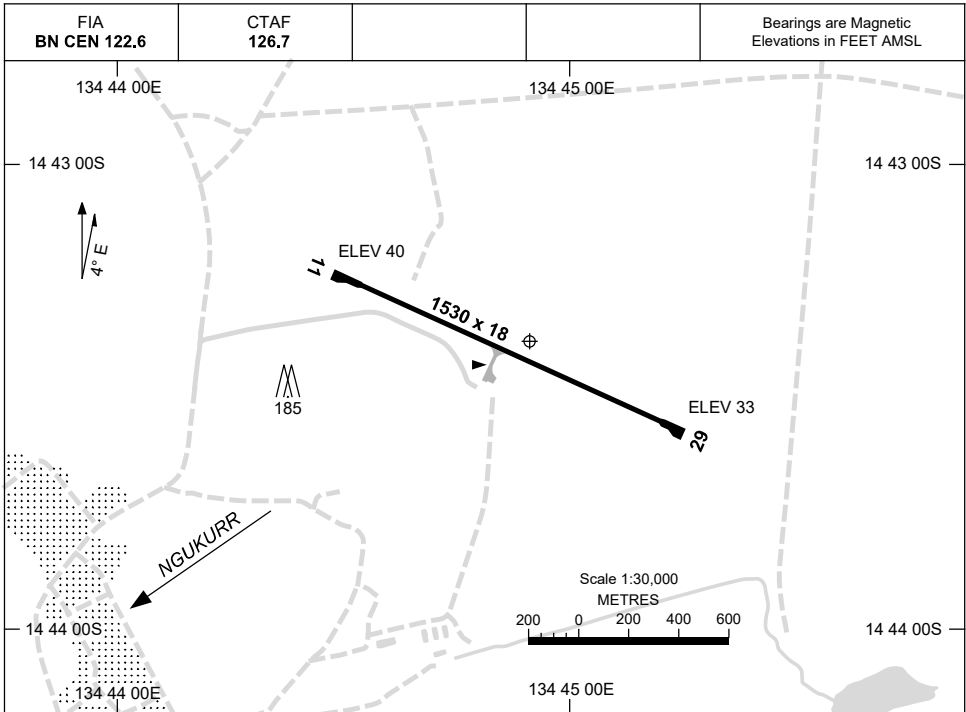


7 SEP 2023

AD ELEV 45  
14 43 22S 134 44 51E

AERODROME CHART  
**NGUKURR, NT (YNGU)**



	<b>AERODROME LIGHTING</b>
<b>RWY</b>	RL : SOLAR - EMERG ONLY.
<b>11</b> <sup>111</sup>	LIRL
<sup>291</sup> <b>29</b>	LIRL

**NOTES**

1. FIA FREQ BN CEN 122.6 AVBL FL160.

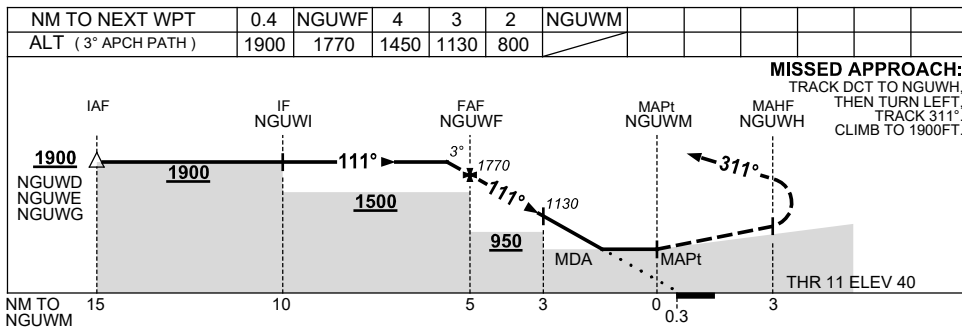
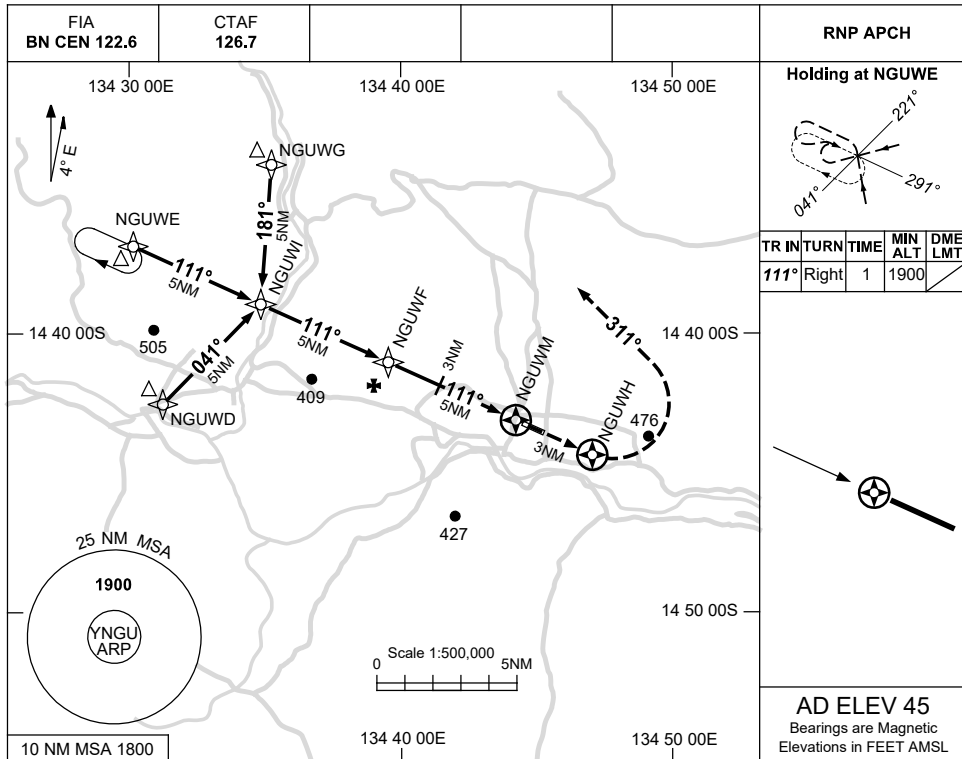
Changes: NOTES.

NGUAD01-176

USE QNH

RNP RWY 11  
**NGUKURR, NT (YNGU)**

8 SEP 2022



**NOTES**

CATEGORY	A	B	C	D
LNAV	<b>800</b> (755-4.3)			<b>NOT APPLICABLE</b>
CIRCLING	<b>1000</b> (955-2.4)		<b>1140</b> (1095-4.0)	
ALTERNATE	(1455-4.4)		(1595-6.0)	

1. MAX IAS:  
 INITIAL : 210KT.

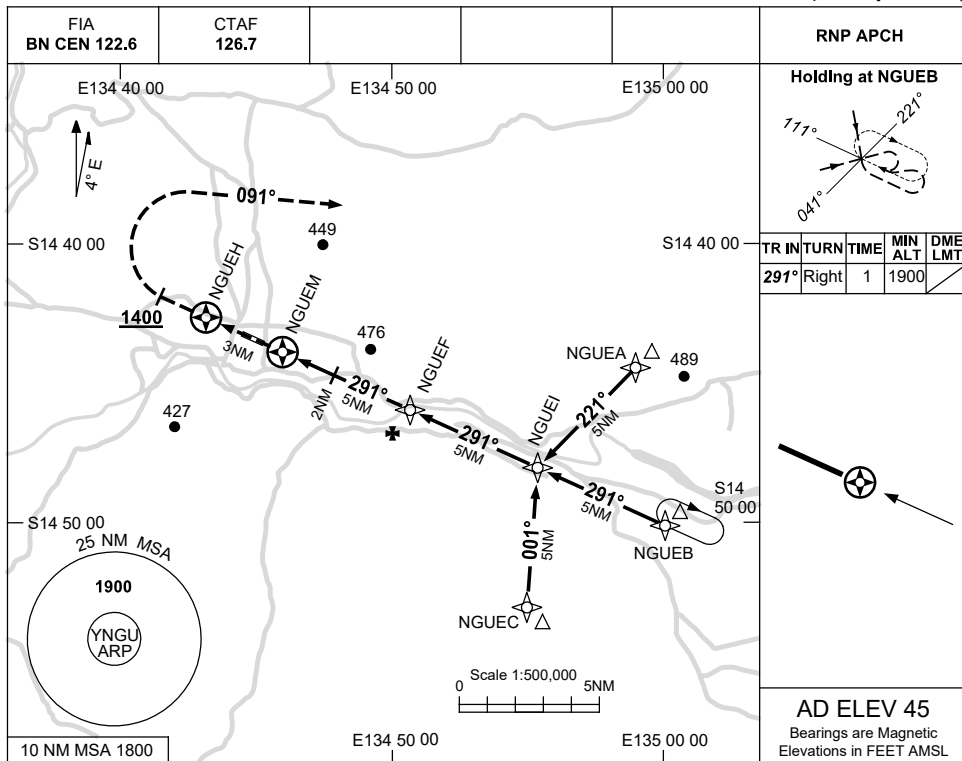
Changes: CHART TITLE, PBN SPECIFICATION BOX.

NGUGN01-172

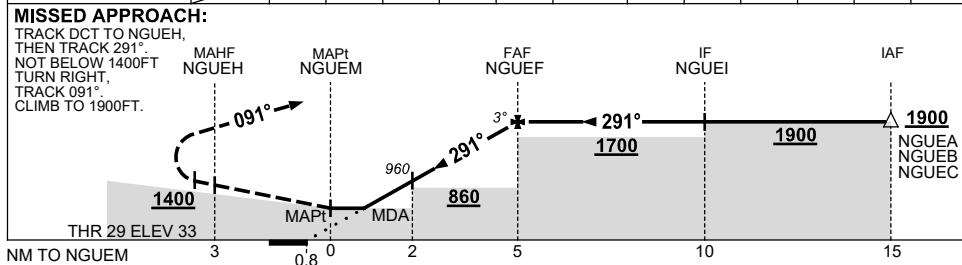
USE QNH

RNP RWY 29  
**NGUKURR, NT (YNGU)**

8 SEP 2022



NM TO NEXT WPT	NGUEM	0.6	1	2	3	4	NGUEF					
ALT (3° APCH PATH)		530	650	960	1280	1600	1900					



**NOTES**

CATEGORY	A	B	C	D
LNAV	530 (497-2.8)			NOT APPLICABLE
CIRCLING	1000 (955-2.4)		1140 (1095-4.0)	
ALTERNATE	(1455-4.4)		(1595-6.0)	

1. MAX IAS:  
 INITIAL : 210KT.

Changes: CHART TITLE, PBN SPECIFICATION BOX.

NGUGN02-172