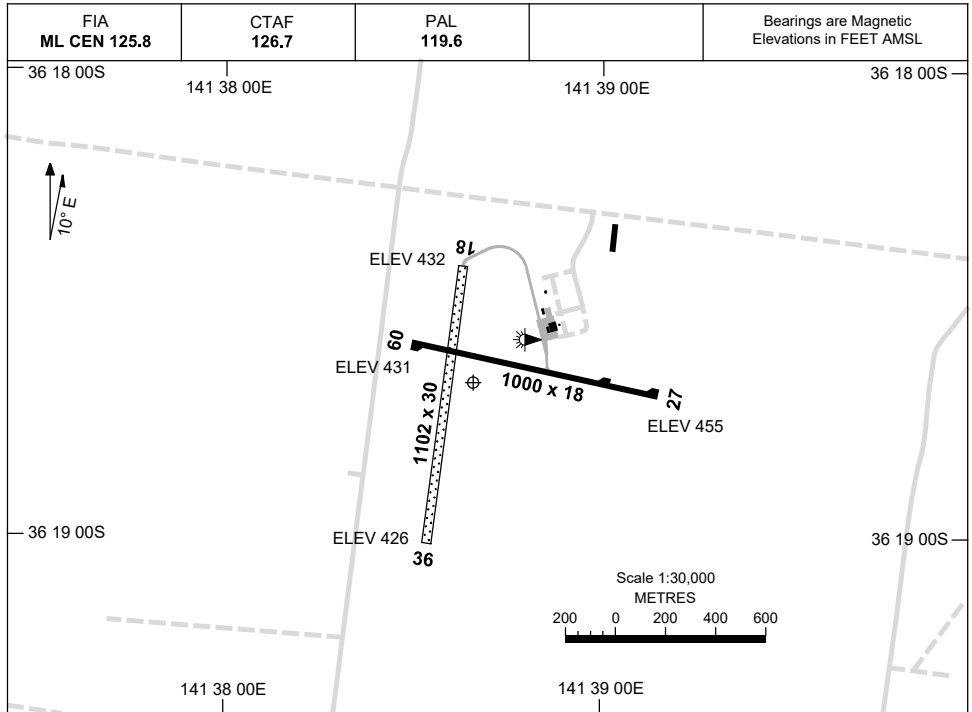


21 MAR 2024

AD ELEV 455
36 18 40S 141 38 40E

AERODROME CHART
NHILL, VIC (YNHL)



| | AERODROME LIGHTING |
|--|---|
| RWY | TWY : BLUE EDGE RL : PAL 119.6 , PTBL IN EMERG |
| 09 <small>093</small> 273 27 | LIRL PTBL LIRL PTBL |
| 18 <small>177</small> 357 36 | RTIL PTBL RTIL PTBL |

NOTES

1. AWIS (PHONE) 03 8470 3218
2. FIA FREQ 125.8 AVBL CIRCUIT AREA.
3. RWY 09/27 AND 18/36 PTBL LIGHTING AVBL DURING EMERG ONLY.

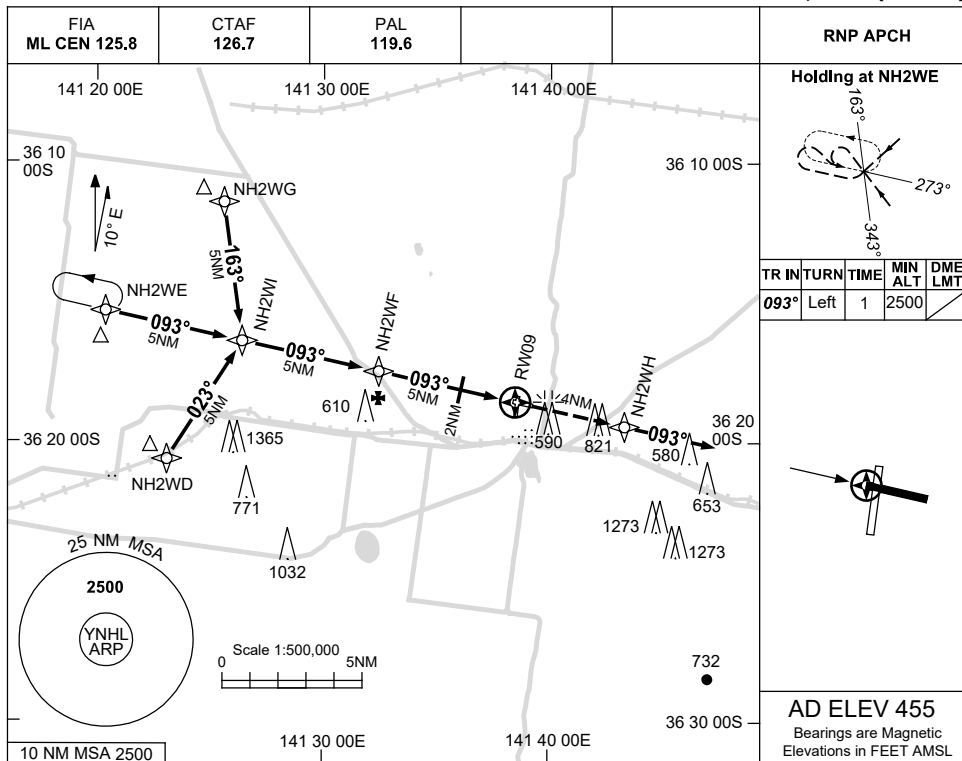
Changes: AD ELEV, THR ELEV, Editorial.

NHLAD01-178

USE QNH

RNP RWY 09
NHILL, VIC (YNHL)

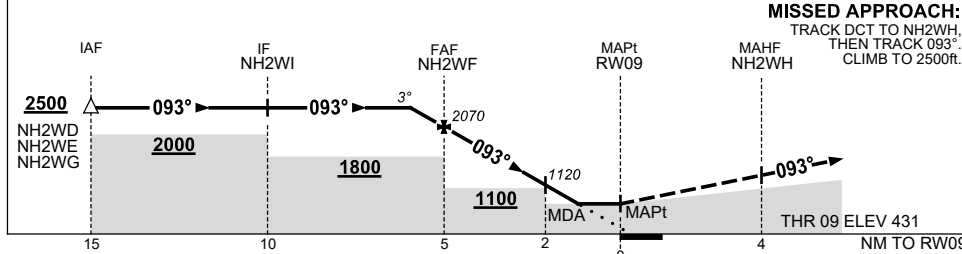
21 MAR 2024



| TR | INTURN | TIME | MIN ALT | DME LMT |
|------|--------|------|---------|---------|
| 093° | Left | 1 | 2500 | |

AD ELEV 455
Bearings are Magnetic
Elevations in FEET AMSL

| NM TO NEXT WPT | 1.3 | NH2WF | 4 | 3 | 2 | 1.4 | RW09 |
|--------------------|------|-------|------|------|------|-----|------|
| ALT (3° APCH PATH) | 2500 | 2070 | 1750 | 1440 | 1120 | 940 | |



MISSED APPROACH:
TRACK DCT TO NH2WH,
THEN TRACK 093°.
CLIMB TO 2500ft.

| CATEGORY | A | B | C | D |
|-----------|----------------|---|----------------|----------------|
| LNAV | 940 (509-2.9) | | | NOT APPLICABLE |
| CIRCLING | 1220 (765-2.4) | | 1320 (865-4.0) | |
| ALTERNATE | (1265-4.4) | | (1365-6.0) | |

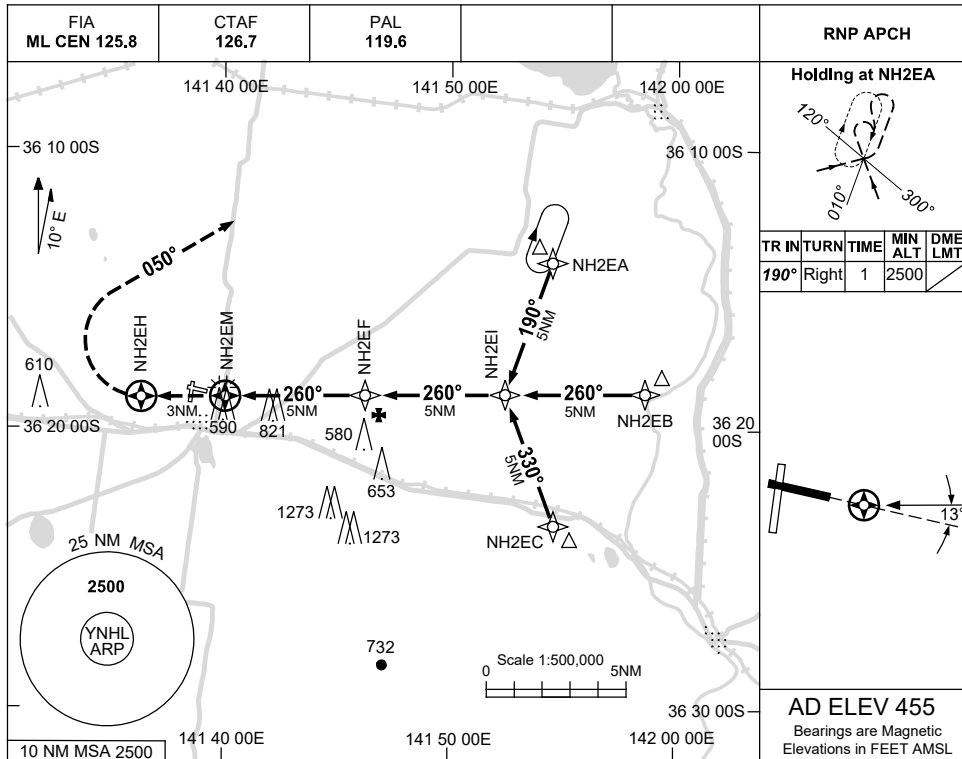
- MAX IAS:
INITIAL : 210KT.
- AWIS (PHONE)
03 8470 3218

Changes: THR ELEV, MINIMA, FINAL SEGMENT MINIMUM ALT, WPT NAMING CONVENTION, Editorial. NHLGN01-178

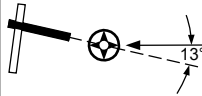
USE QNH

RNP RWY 27
NHILL, VIC (YNHL)

21 MAR 2024

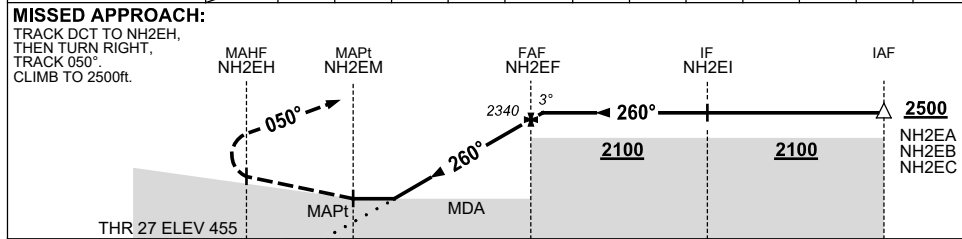


| TR | IN | TURN | TIME | MIN | DME |
|------|-------|------|------|------|-----|
| | | | | ALT | LMT |
| 190° | Right | 1 | | 2500 | |



AD ELEV 455
Bearings are Magnetic
Elevations in FEET AMSL

| NM TO NEXT WPT | NH2EM | 1 | 2 | 3 | 4 | NH2EF | 0.5 | | | |
|--------------------|-------|------|------|------|------|-------|------|--|--|--|
| ALT (3° APCH PATH) | | 1070 | 1380 | 1700 | 2020 | 2340 | 2500 | | | |



NOTES

| CATEGORY | A | B | C | D |
|-----------|----------------|---|----------------|----------------|
| LNAV | 1070 (615-3.5) | | | NOT APPLICABLE |
| CIRCLING | 1220 (765-2.4) | | 1320 (865-4.0) | |
| ALTERNATE | (1265-4.4) | | (1365-6.0) | |

- MAX IAS: INITIAL : 210KT.
- AWIS (PHONE) 03 8470 3218

Changes: THR ELEV, MINIMA, DIST/ALT TABLE, WPT NAMING CONVENTION, Editorial.

NHLGN02-178