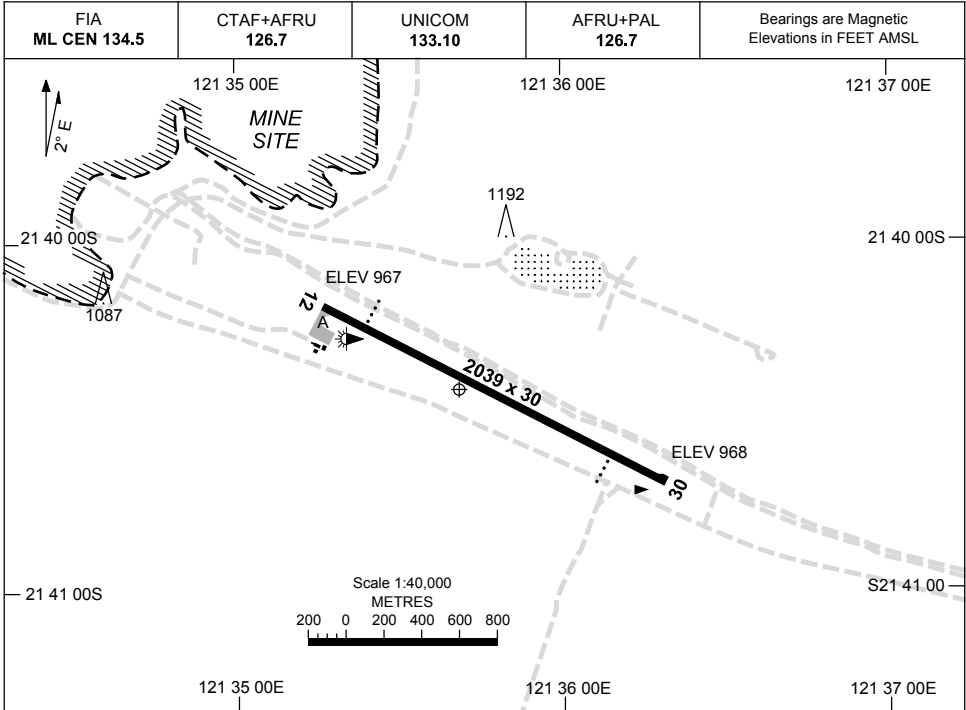


13 JUN 2024

AD ELEV 968  
21 40 25S 121 35 41E

AERODROME CHART  
**NIFTY, WA (YCNF)**



<b>RWY</b>	<b>AERODROME LIGHTING</b>
	RL : AFRU+PAL 126.7
<b>12</b> <sup>116</sup>	PAPI 3.0° 48FT PTBL
<sup>296</sup> <b>30</b>	PAPI 3.0° 48FT PTBL

**NOTES**

1. FIA FREQ 134.5 AVBL IN CIRCUIT AREA.
2. RWY 12/30 PTBL LIGHTING AVBL FOR EMERG USE ONLY. 60 MIN PN RQ.
3. RWY 12/30 PAPI LIGHTING-PAL 30 MIN CYCLE.

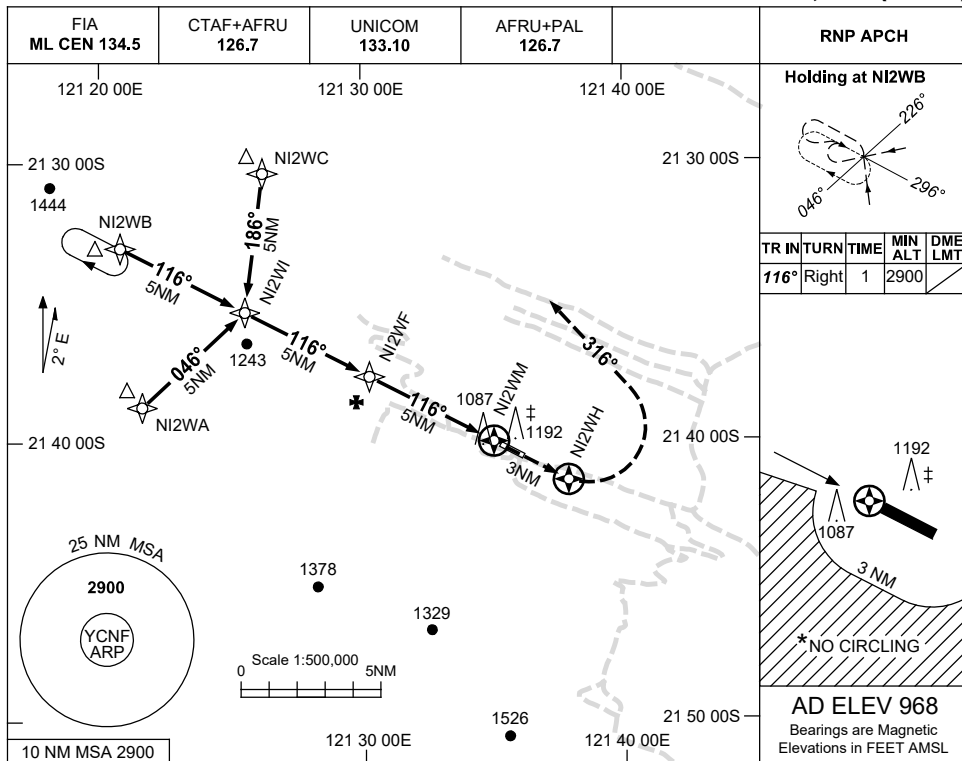
Changes: OBSTACLE ELEVATION.

CNFAD01-179

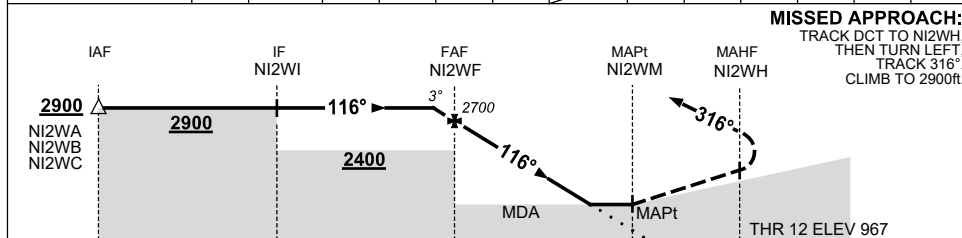
USE QNH

RNP RWY 12  
NIFTY, WA (YCNF)

13 JUN 2024



NM TO NEXT WPT	0.6	NI2WF	4	3	2	1.3	NI2WM				
ALT (3° APCH PATH)	2900	2700	2380	2060	1740	1530					



<b>CATEGORY</b>	<b>A</b>	<b>B</b>	<b>C</b>	<b>D</b>				
LNAV	1530 (562-3.2)			<b>NOT APPLICABLE</b>				
CIRCLING	1590 (622-2.4)		1690 (722-4.0)					
ALTERNATE	(1122-4.4)		(1222-6.0)					

**NOTES**

- MAX IAS:  
INITIAL : 210KT  
HOLDING: 200KT.
- NO CIRCLING BEYOND 3NM S OF RWY 12/30.

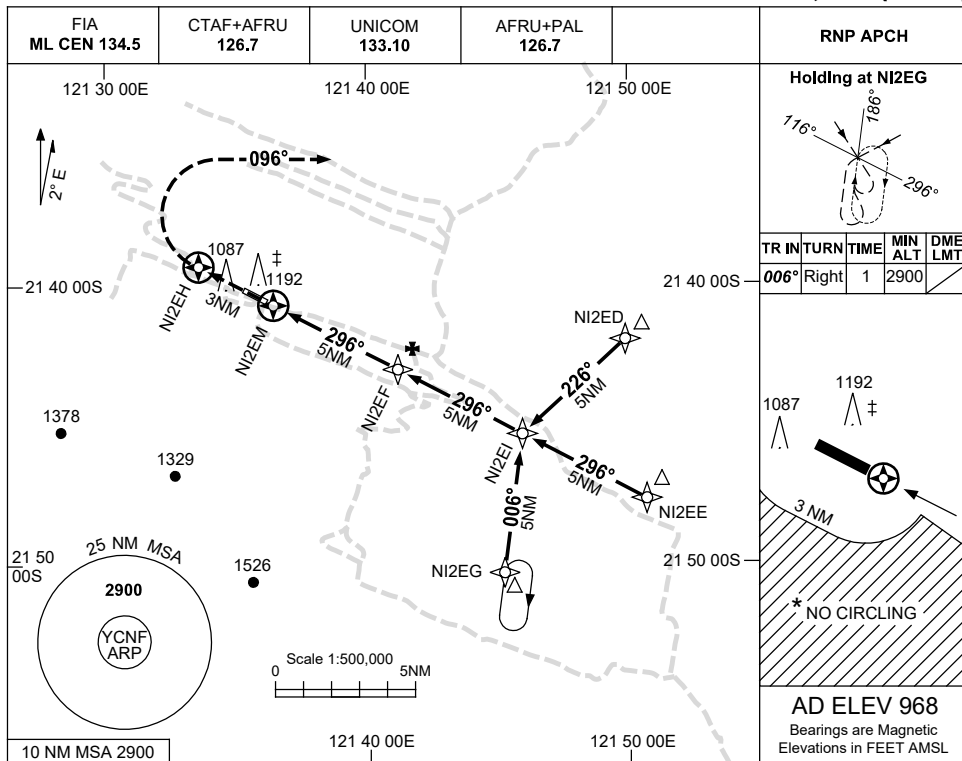
‡ **CAUTION:**  
UNMARKED/UNLIT  
1192FT TWR 016°/  
0.4NM FROM ARP.

Changes: CIRCLING MINIMA, ALTERNATE MINIMA, OBSTACLE ELEVATION, WAYPOINT NAMES. CNFGN01-179

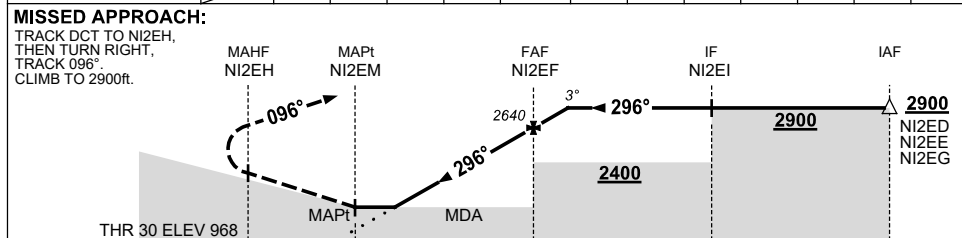
USE QNH

RNP RWY 30  
NIFTY, WA (YCNF)

13 JUN 2024



NM TO NEXT WPT	NI2EM	1.3	2	3	4	NI2EF	0.8			
ALT (3° APCH PATH)		1470	1680	2000	2320	2640	2900			



NM TO NI2EM 3 0.1 5 10 15

**NOTES**

- MAX IAS: INITIAL : 210KT.
  - NO CIRCLING BEYOND 3NM S OF RWY 12/30.
- ‡ CAUTION: UNMARKED/UNLIT 1192FT TWR 016°/ 0.4NM FROM ARP.

CATEGORY	A	B	C	D
LNAV	1470 (502-2.8)			NOT APPLICABLE
CIRCLING	1590 (622-2.4)	1690 (722-4.0)		
ALTERNATE	(1122-4.4)		(1222-6.0)	

Changes: CIRCLING MINIMA, ALTERNATE MINIMA, OBSTACLE ELEVATION, WAYPOINT NAMES.

CNFGN02-179