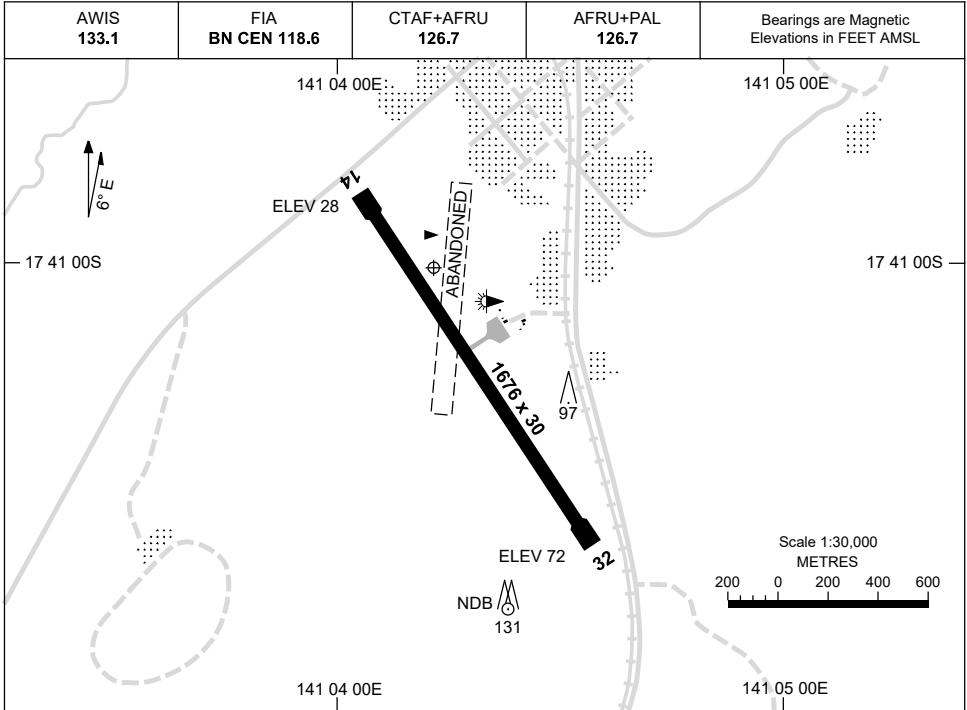


17 JUN 2021

AD ELEV 73
17 41 06S 141 04 13E

AERODROME CHART
NORMANTON, QLD (YNTN)



	AERODROME LIGHTING
RWY	TAXIWAY : BLUE EDGE RL : AFRU+PAL 126.7 , SDBY (15 SEC)
14 ¹⁴¹ ³²¹ 32	LIRL LIRL

NOTES

Changes: COORD FMT.

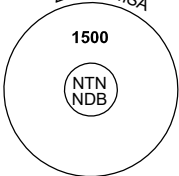
NTNAD01-167

GNSS ARRIVAL PROCEDURES NORMANTON, QLD (YNTN)

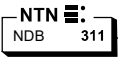
17 JUN 2021

AWIS 133.1	FIA BN CEN 118.6	CTAF+AFRU 126.7	AFRU+PAL 126.7		Bearings are Magnetic Elevations in FEET AMSL
---------------	---------------------	--------------------	-------------------	--	--

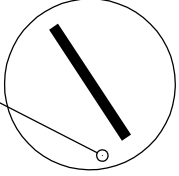
REFERENCE WAYPOINT NTN NDB



25 NM MSA
1500
NTN NDB

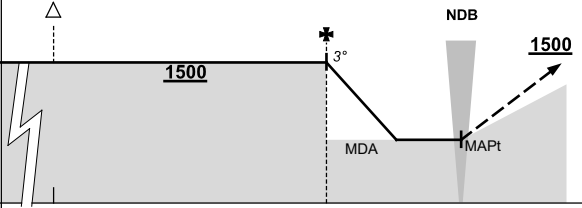


NTN NDB 311



10 NM MSA 1500

AD ELEV 73

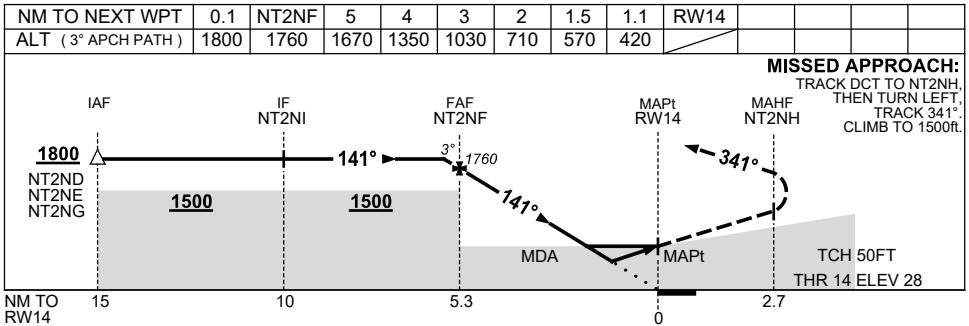
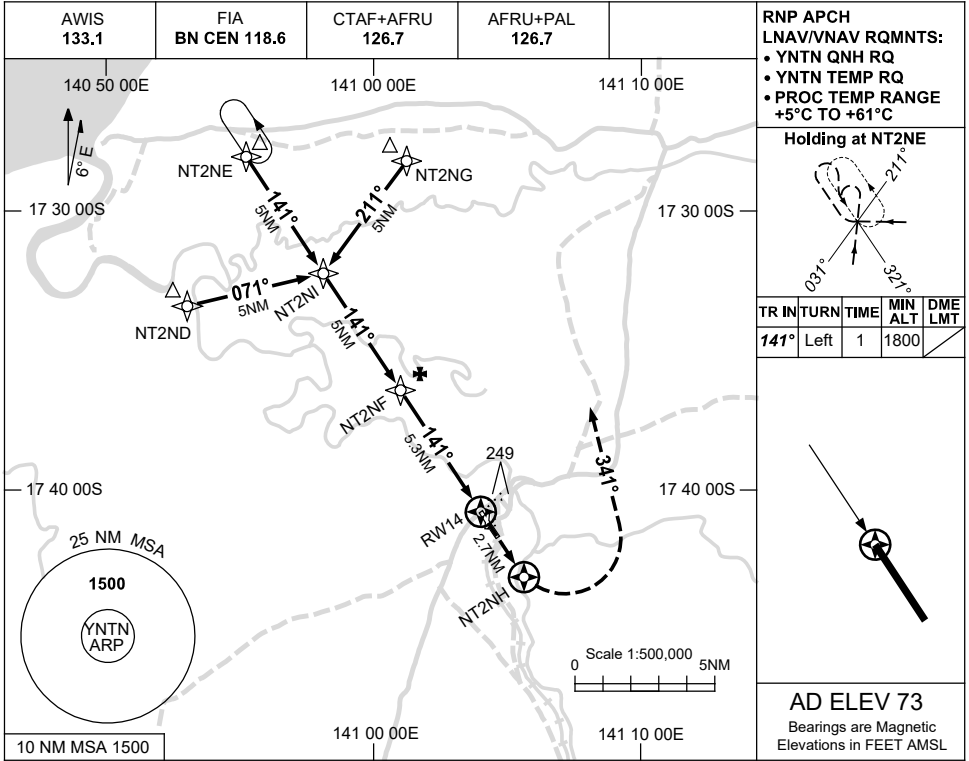
ALL ROUTES TO NTN NDB						MISSED APPROACH: TRACK AS REQUIRED. CLIMB TO 1500FT.
	NM TO NTN NDB	25	15	5	0	
CIRCLING MINIMA			A,B: 670-2.4	C: 770-4.0	D: N/A	
NM TO NTN NDB	5	4	3	2.7	2.4	
ALT (3° APCH PATH)	1500	1180	860	770	670	

USE QNH

RNP RWY 14

NORMANTON, QLD (YNTN)

21 MAR 2024



NOTES

CATEGORY	A	B	C	D
LNAV/VNAV	420 (392-2.2)			NOT APPLICABLE
LNAV	570 (542-3.1)			
CIRCLING	670 (597-2.4)		770 (697-4.0)	
ALTERNATE	(1097-4.4)		(1197-6.0)	

1. MAX IAS:
 INITIAL : 210KT.

Changes: LNAV/VNAV, LNAV MINIMA, WPT NAMING CONVENTION, MAPt, Editorial.

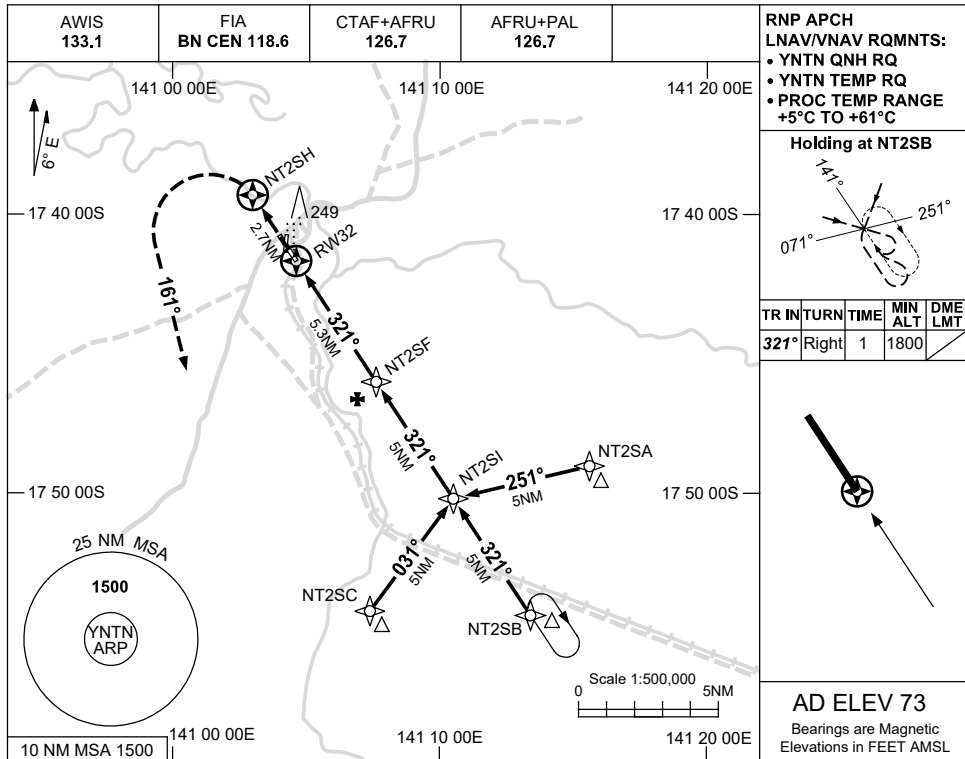
NTNGN01-178

USE QNH

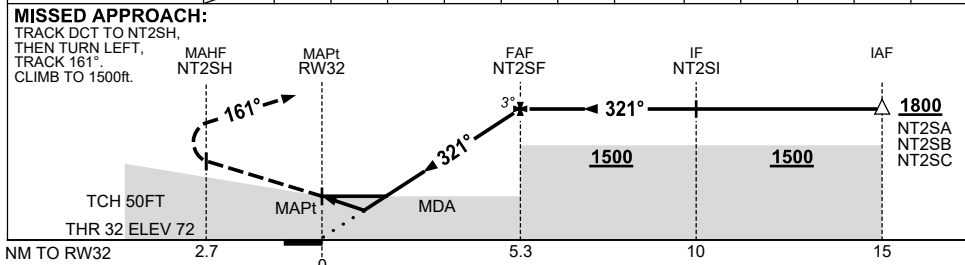
RNP RWY 32

NORMANTON, QLD (YNTN)

21 MAR 2024



NM TO NEXT WPT	RW32	0.9	1.5	2	3	4	5	NT2SF				
ALT (3° APCH PATH)		420	610	760	1080	1400	1710	1800				



NOTES

CATEGORY	A	B	C	D
LNAV/VNAV	420 (348-1.9)			NOT APPLICABLE
LNAV	610 (537-2.9)			
CIRCLING	670 (597-2.4)		770 (697-4.0)	
ALTERNATE	(1097-4.4)		(1197-6.0)	

1. MAX IAS:
 INITIAL : 210KT.

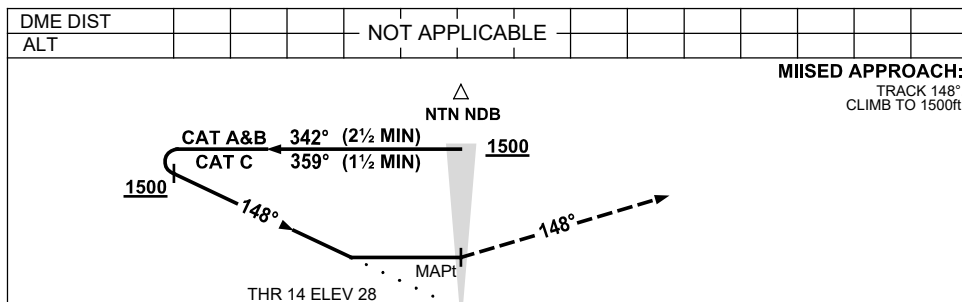
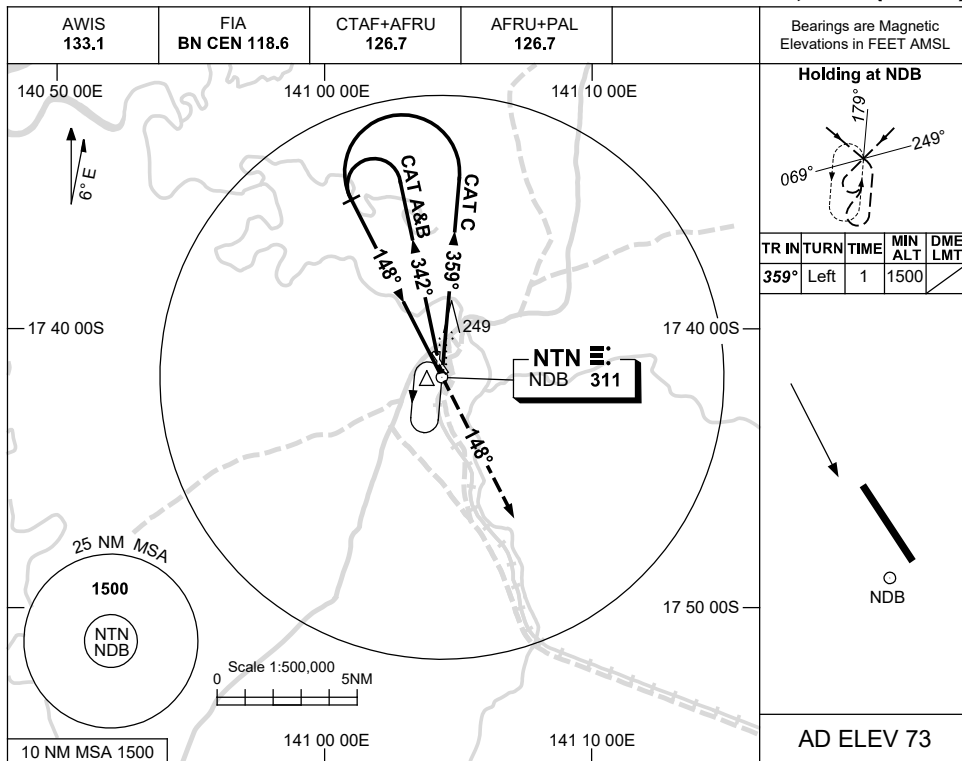
Changes: LNAV/VNAV, WPT NAMING CONVENTION, MAPt, Editorial.

NTNGN02-178

USE QNH

NDB RWY 14
NORMANTON, QLD (YNTN)

21 MAR 2024



NOTES

CATEGORY	A	B	C	D
S-I NDB	660 (632-3.6)			NOT APPLICABLE
CIRCLING	670 (597-2.4)	770 (697-4.0)		
ALTERNATE	(1097-4.4)		(1197-6.0)	

1. MAX IAS:
 INITIAL :
 CAT C 210KT.

Changes: OUTBOUND TRK, NOTE 1, HOLDING, Editorial.

NTNNB01-178