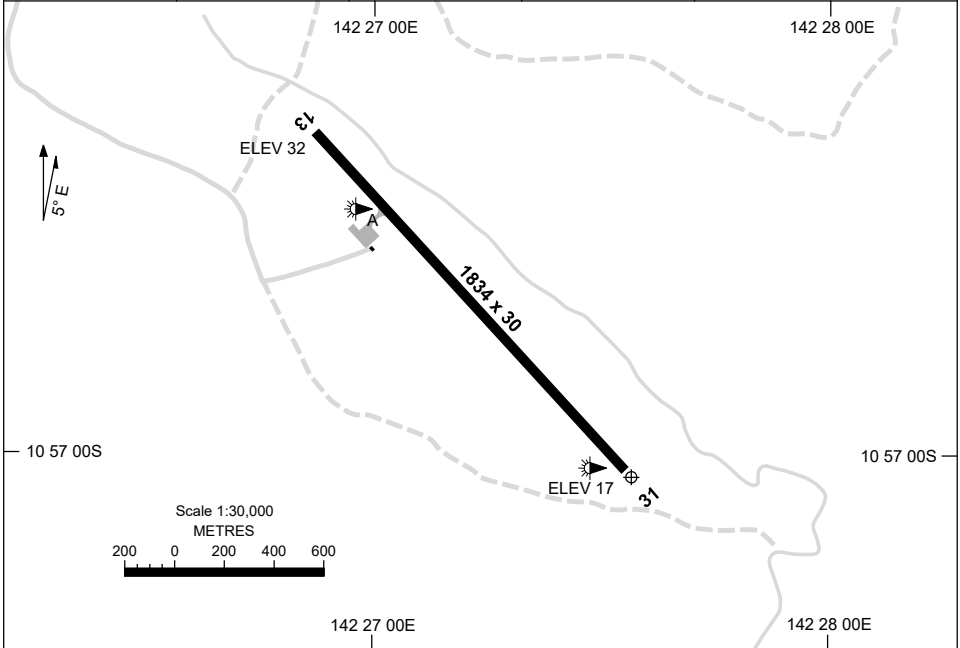


13 JUN 2024

AD ELEV 34  
10 57 03S 142 27 34E

AERODROME CHART  
**NORTHERN PENINSULA, QLD (YNPE)**

FIA BN CEN 120.3	CTAF 126.5	PAL+AA 126.6		Bearings are Magnetic Elevations in FEET AMSL
---------------------	---------------	-----------------	--	--



<b>RWY</b>	<b>AERODROME LIGHTING</b>	
	TAXIWAY	: BLUE EDGE.
	RL	: PAL+AA 126.6, SDBY (15 SEC), 1 HR PN (ARO 0419 413 920).
<b>13</b> <sup>132</sup>	LIRL	
<sup>312</sup> <b>31</b>	LIRL	

**NOTES**

1. FIA BN CEN 120.3 AVBL CIRCUIT AREA.
2. PAL REQUIRES THREE ONE SEC PULSES TO ACTIVATE.

Changes: THR ELEV.

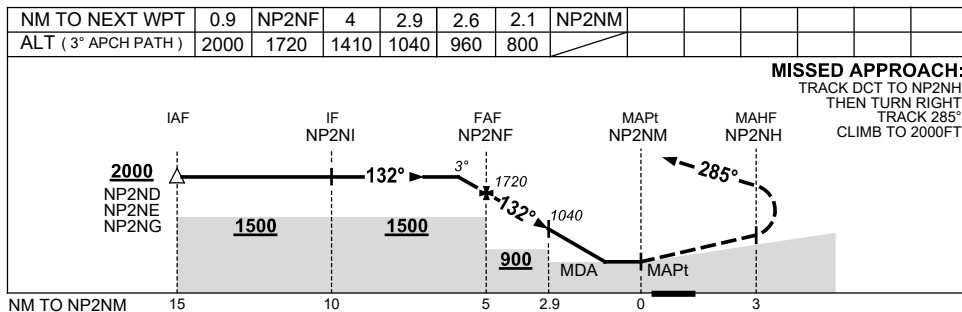
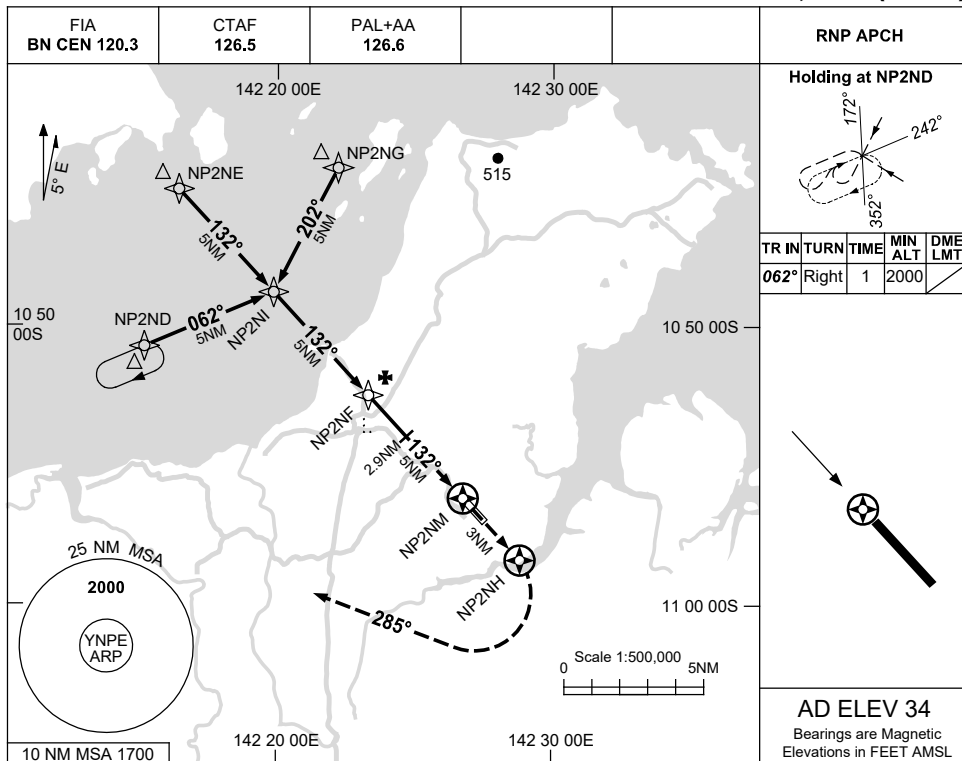
NPEAD01-179

USE QNH

RNP W

13 JUN 2024

**NORTHERN PENINSULA, QLD (YNPE)**



**NOTES**

CATEGORY	A	B	C	D
				<b>NOT APPLICABLE</b>
CIRCLING	<b>800</b> (766-2.4)		<b>960</b> (926-4.0)	
ALTERNATE	(1266-4.4)		(1426-6.0)	

1. MAX IAS:  
INITIAL : 210KT.
2. PROC AND HOLDING PATTERN OVERLAI BY YHID NDB RWY 14 SEPARATION NOT ASSURED.

Changes: 10NM MSA, DIST-ALT TABLE, WPT NAMING CONVENTION, NOTE 2.

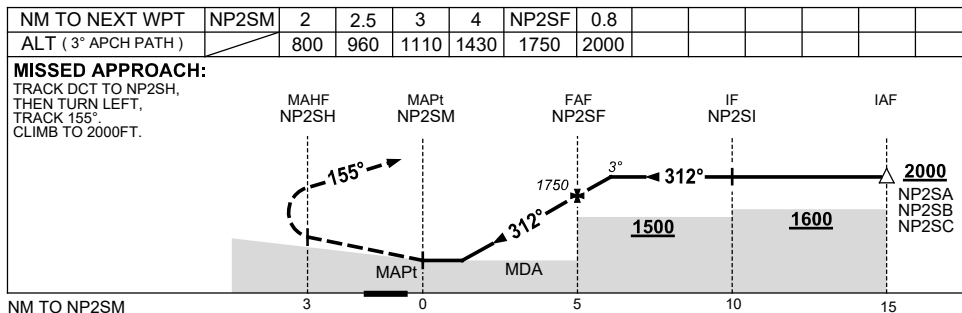
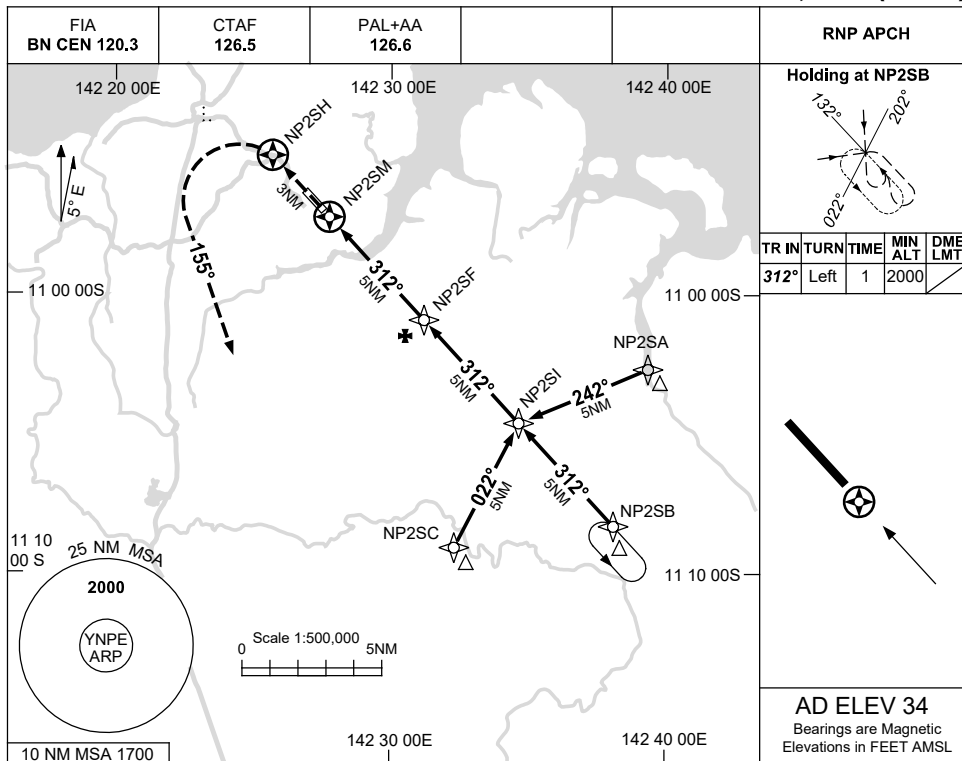
NPEGN01-179

USE QNH

RNP E

13 JUN 2024

**NORTHERN PENINSULA, QLD (YNPE)**



**NOTES**

CATEGORY	A	B	C	D
				NOT APPLICABLE
CIRCLING	800 (766-2.4)		960 (926-4.0)	
ALTERNATE	(1266-4.4)		(1426-6.0)	

1. MAX IAS:  
INITIAL : 210KT.

Changes: 10NM MSA, WPT NAMING CONVENTION.

NPEGN02-179