

5 SEP 2024

AD ELEV 1336

27 24 41S 151 44 07E

AERODROME CHART - Page 1

**Oakey, QLD (YBOK)**

ATIS 124.3 254	APP 125.4	ACD 133.35	TWR 120.1	SMC 121.9	FIA (AH) BN CEN 121.2	CTAF+AFRU (AH) 127.65	PAL 121.3	Bearings are Magnetic Elevations in FEET AMSL
-------------------	--------------	---------------	--------------	--------------	--------------------------	--------------------------	--------------	--



Changes: ABN REINSTATED.

BOKAD01-180

5 SEP 2024

AD ELEV 1336  
27 24 41S 151 44 07E

AERODROME CHART - Page 2  
**OAKEY, QLD (YBOK)**

ATIS 124.3 254	APP 125.4	ACD 133.35	TWR 120.1	SMC 121.9	FIA (AH) BN CEN 121.2	CTAF+AFRU (AH) 127.65	PAL 121.3	Bearings are Magnetic Elevations in FEET AMSL
-------------------	--------------	---------------	--------------	--------------	--------------------------	--------------------------	--------------	--

--	--	--	--	--	--	--	--	--

<b>AERODROME LIGHTING</b>								
<b>RWY</b>	ABN : ALTN W/G 8 SEC TAXIWAY : GREEN CENTRELINE , BLUE EDGE RL : PILOT ACTIVATED 121.3 , SDBY							
<b>14</b> <sup>135</sup> <sub>315</sub> <b>32</b>	PAPI 3.0° 48FT MIRL PAPI 3.0° 48FT MIRL							
<b>05</b> <sup>044</sup> <sub>224</sub> <b>23</b>								
<b>09</b> <sup>089</sup> <sub>269</sub> <b>27</b>	MIRL MIRL							

<p><b>NOTES</b></p>								
---------------------	--	--	--	--	--	--	--	--

Changes: ABN REINSTATED, Editorial.

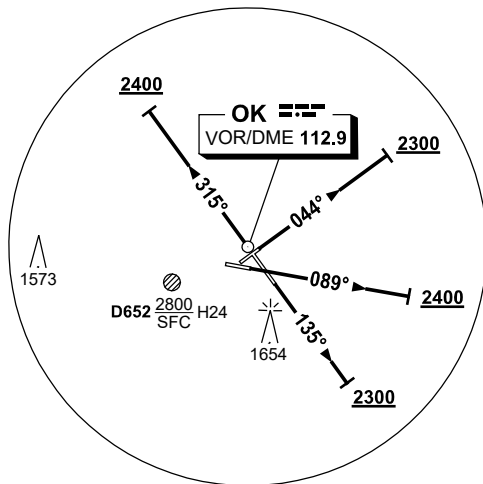
BOKAD02-180

**STANDARD INSTRUMENT DEPARTURES (SID)  
OAKEY SIX DEPARTURE (RADAR)  
OAKEY, QLD (YBOK)**

**5 SEP 2024**

ATIS 124.3 254	APP 125.4	ACD 133.35	TWR 120.1	SMC 121.9	FIA (AH) BN CEN 121.2	CTAF+AFRU (AH) 127.65	PAL 121.3	Bearings are Magnetic. Elevations in FEET AMSL
-------------------	--------------	---------------	--------------	--------------	--------------------------	--------------------------	--------------	---

NOT TO SCALE



10 NM MSA 3700

**OAKEY SIX DEPARTURE (RADAR)**

**RWY 05**

GRAD 3.3%

- Track 044°
- At 2300FT, but not before DER, turn to assigned heading or track
- When directed contact Approach for radar vectors

**RWY 09**

GRAD 3.6% to 2800FT, thence 3.3% (5% to 2400FT)

- Track 089°
- At 2400FT, but not before DER, turn to assigned heading or track
- When directed contact Approach for radar vectors

**RWY 14**

GRAD 4.1% to 2800FT, thence 3.3% (5% to 2300FT)

- Track 135°
- At 2300FT, but not before DER, turn to assigned heading or track
- When directed contact Approach for radar vectors

**RWY 32**

GRAD 3.3%

- Track 315°
- At 2400FT but not before DER, turn to assigned heading or track
- When directed contact Approach for radar vectors

**COMMUNICATIONS FAILURE PROCEDURE**

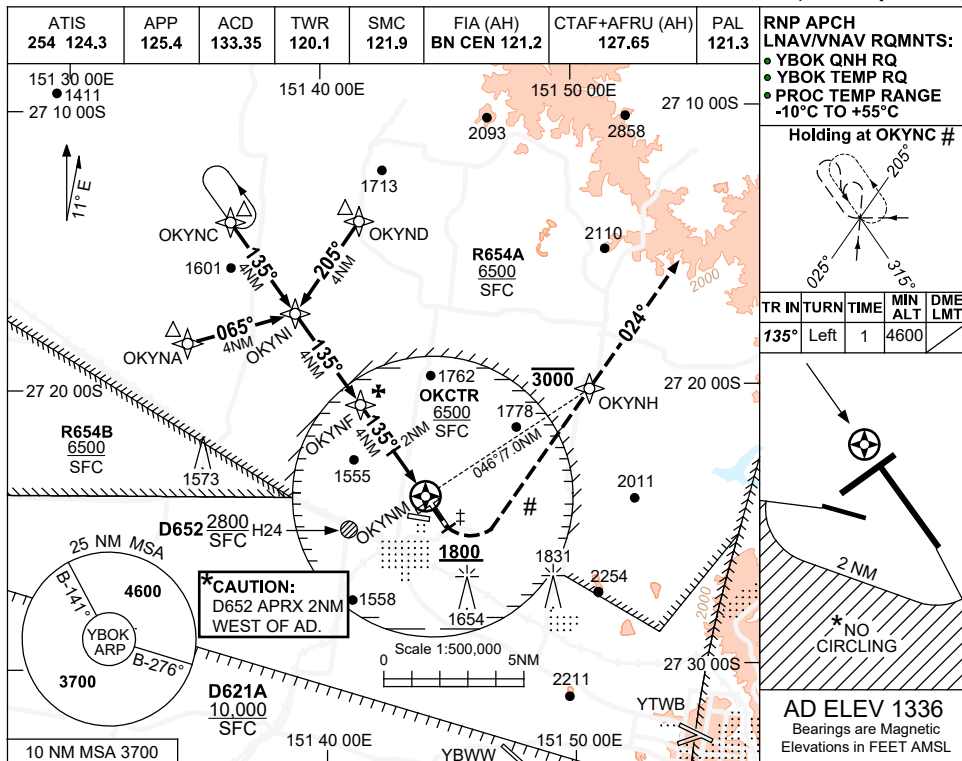
On recognition of communication failure:

- Squawk 7600
- Maintain last assigned vector for two minutes and, if necessary, climb to minimum safe altitude to maintain terrain clearance, then
- Proceed in accordance with the latest ATC route clearance acknowledged.

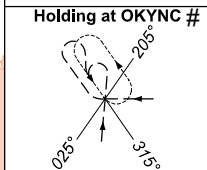
Changes: Editorial.

BOKDP01-180

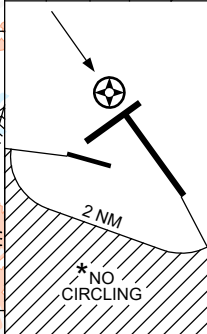
16 JUN 2022



RNP APCH  
 LNAV/VNAV RQMNTS:  
 • YBOK QNH RQ  
 • YBOK TEMP RQ  
 • PROC TEMP RANGE  
 -10°C TO +55°C

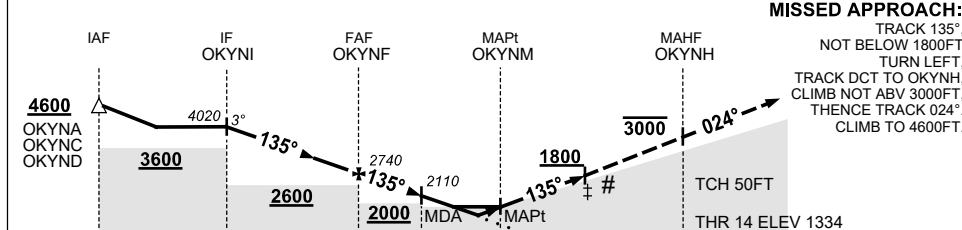


TR	INTURN	TIME	MIN ALT	DME LMT
135°	Left	1	4600	



AD ELEV 1336  
 Bearings are Magnetic  
 Elevations in FEET AMSL

NM TO NEXT WPT	OKYNI	3	2	1	OKYNF	3	2	1.2	0.6	OKYNM
ALT (3° APCH PATH)	4020	3700	3380	3060	2740	2430	2110	1860	1670	



**NOTES**

- MAX IAS:  
 INITIAL : 200KT.  
 ‡ MAP TURN: 180KT.
- CAUTION:** YTWB RNP RWY 11 NPA OVERLIES THIS PROCEDURE.
- NO CIRCLING SW OF RWY 09/27 AND RWY 14/32 BEYOND 2NM.
- PROC MAY NOT BE CONTAINED IN CTA.

CATEGORY	A	B	C	D
LNAV/VNAV		1670 (336-1.9)		NOT APPLICABLE
LNAV		1860 (524-3.0)		
CIRCLING *	2170 (834-2.4)		2470 (1134-4.0)	
ALTERNATE	(1334-4.4)		(1634-6.0)	

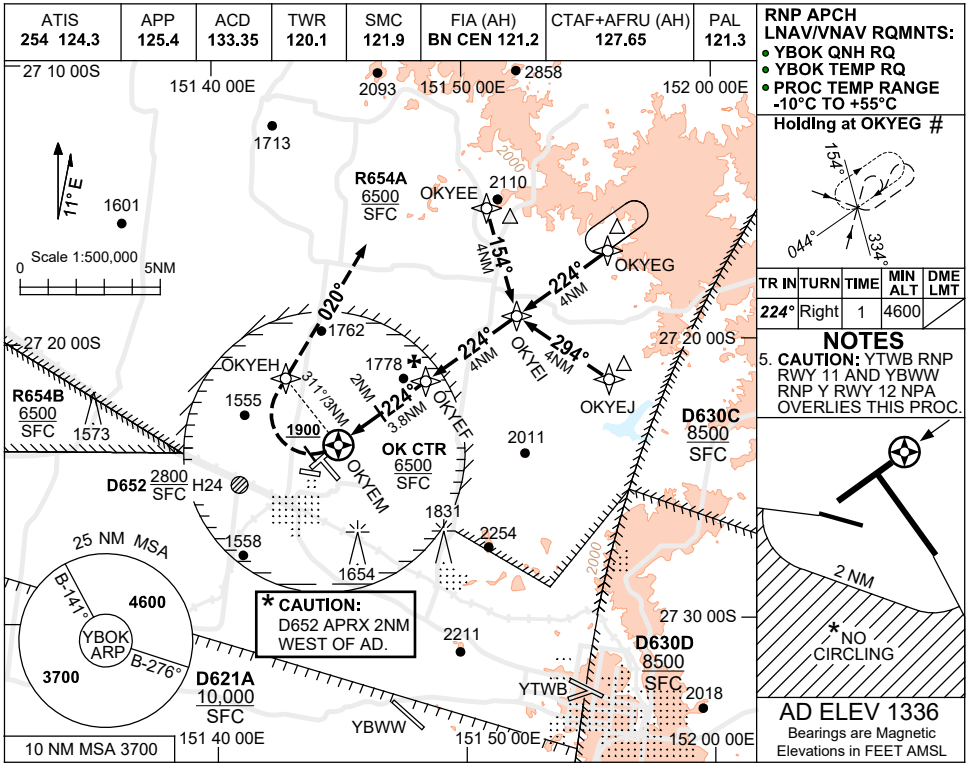
Changes: OK CTR, R654A AND R654B. BOKGN01-171

USE QNH

RNP RWY 23

16 JUN 2022

Oakey, QLD (YBOK)



**RNP APCH LNAV/VNAV RQMNTS:**

- YBOK QNH RQ
- YBOK TEMP RQ
- PROC TEMP RANGE -10°C TO +55°C

Holding at OKYEG #

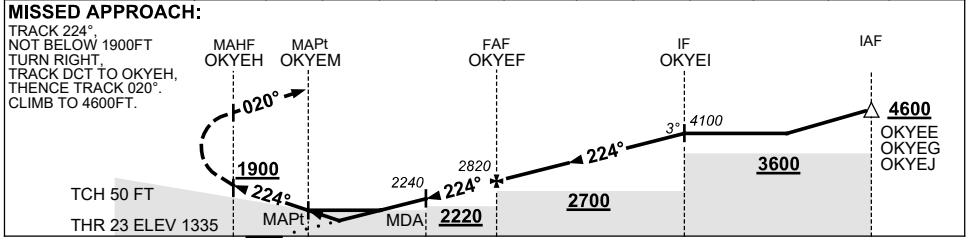
TR IN	TURN	TIME	MIN ALT	DME LMT
224°	Right	1	4600	

**NOTES**

5. CAUTION: YTWB RNP RWY 11 AND YBWW RNP Y RWY 12 NPA OVERLIES THIS PROC.

**AD ELEV 1336**  
Bearings are Magnetic Elevations in FEET AMSL

NM TO NEXT WPT	OKYEM	0.8	1.4	2	3	OKYEF	1	2	3	OKYEI
ALT (3° APCH PATH)		1850	2060	2240	2560	2820	3140	3450	3770	4100



- NOTES**
1. MAX IAS:  
INITIAL : 200KT.  
MAP TURN: 130KT.
  2. HLDG AREA NOT CONTAINED WITHIN RESTD AREAS WHEN ACT.
  - \*3. NO CIRCLING SW OF RWY 09/27 AND RWY 14/32 BEYOND 2NM.
  - #4. PROC MAY NOT BE CONTAINED IN CTA.

CATEGORY	A	B	C	D
LNAV/VNAV	1850 (515-2.9)		NOT APPLICABLE	
LNAV	2060 (724-4.1)			
CIRCLING *	2170 (834-2.4)			
ALTERNATE	(1334-4.4)			

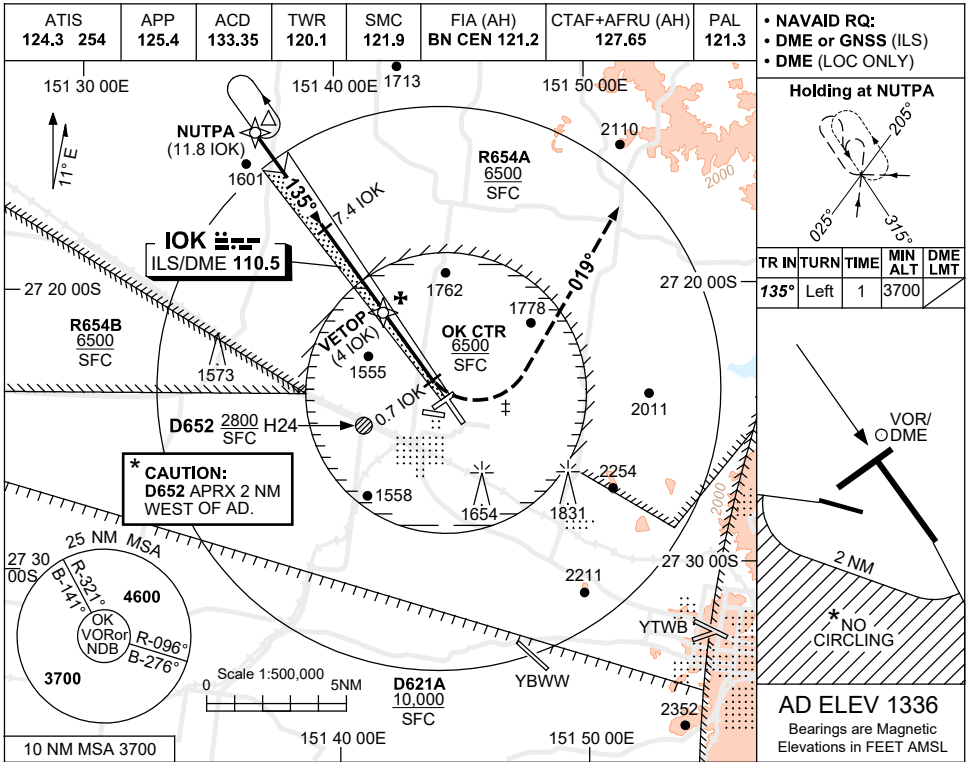
Changes: OK CTR, R654A AND R654B, Editorial.

BOKGN02-171

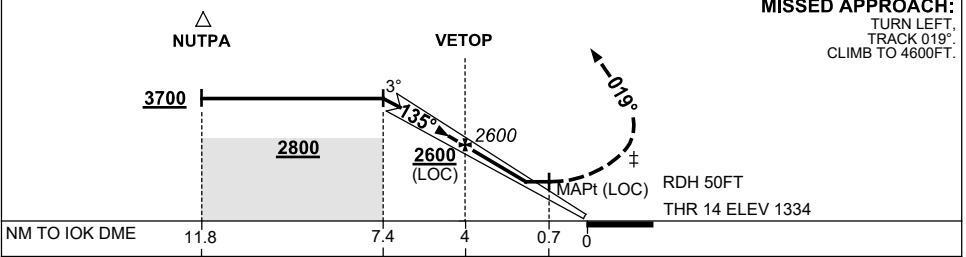
USE QNH

ILS-Z or LOC-Z RWY 14  
**Oakey, QLD (YBOK)**

16 JUN 2022



DIST TO IOK DME	7.4	7	6	5	4	3	2.1						
ALT (3° APCH PATH)	3700	3560	3240	2930	2600	2290	1990						



CATEGORY	A	B	C	D
S-I ILS (2.5% MAP)		1920 (586-3.3)		NOT APPLICABLE
S-I ILS (5.4% MAP)		1690 (356-2.0)		
S-I LOC		1990 (654-3.7)		
CIRCLING *	2170 (834-2.4)	2470 (1134-4.0)		
ALTERNATE		(1334-4.4)	(1634-6.0)	

**NOTES**

- MAX IAS :  
 HOLDING: 180KT.  
 INITIAL : 180KT.  
 ‡ MAP TURN: 170KT.
- NO CIRCLING SW OF RWY 09/27 AND RWY 14/32 BEYOND 2NM.
- CAUTION:** PROC OVERLAID BY YTWB RNP RWY 11.

Changes: OK CTR, R654A AND R654B, Editorial.

BOKII01-171