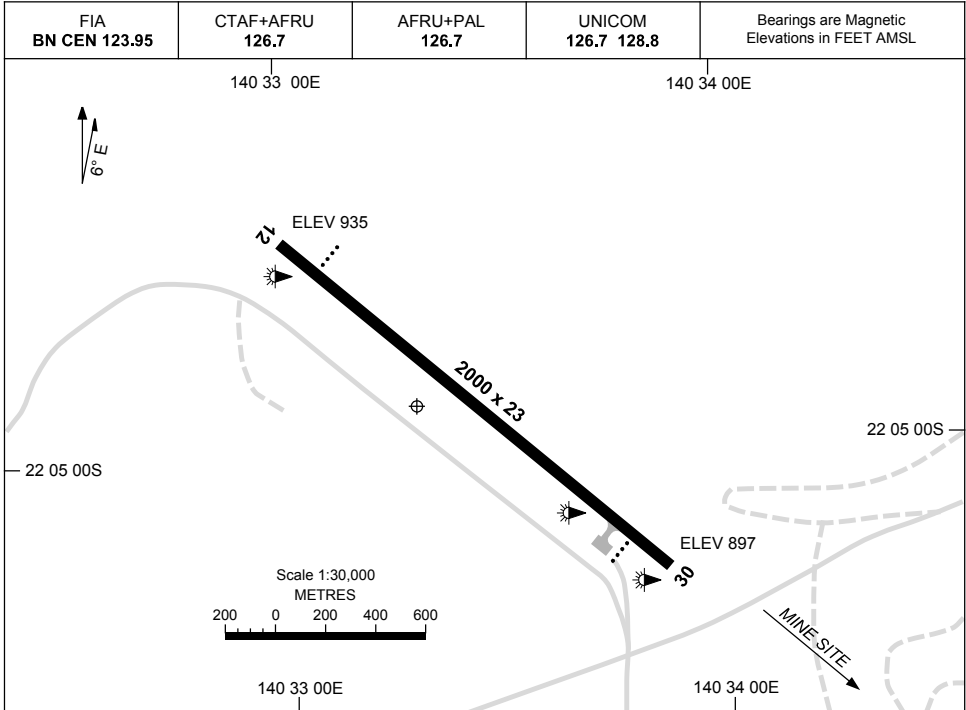


15 JUN 2023

AD ELEV 935
22 04 54S 140 33 24E

AERODROME CHART
OSBORNE MINE, QLD (YOSB)



	AERODROME LIGHTING
RWY	TAXIWAY : BLUE EDGE RL : AFRU+PAL 126.7 , SDBY (30 SEC) , PTBL (EMERG ONLY, 90 MIN PN. CTC AD MGR: 07 4748 0337/0307)
12 <small>126</small>	PAPI 3.0° 45FT LIRL PTBL
<small>306</small> 30	PAPI 3.0° 45FT LIRL PTBL

NOTES

1. ALL PILOTS ARE RQ TO BCST THEIR INTENTIONS INBOUND ON PRIMARY UNICOM FREQ 126.7. SECONDARY UNICOM FREQ 128.8

Changes: RWY BRG.

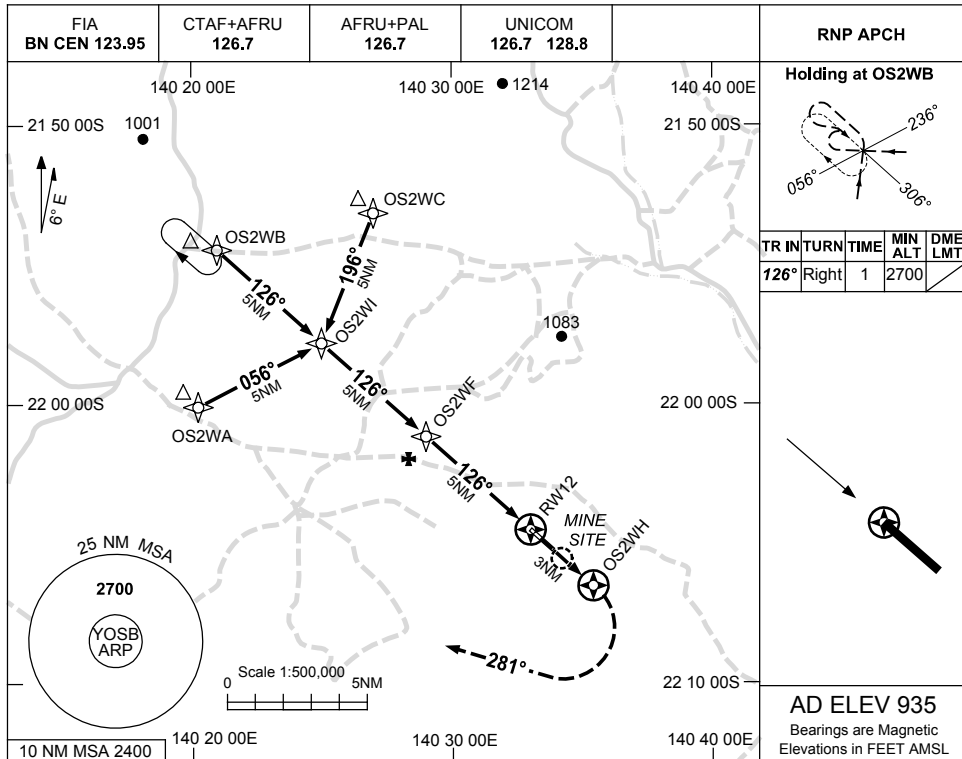
OSBAD01-175

USE QNH

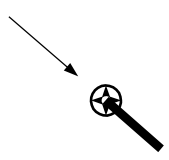
RNP RWY 12

OSBORNE MINE, QLD (YOSB)

15 JUN 2023

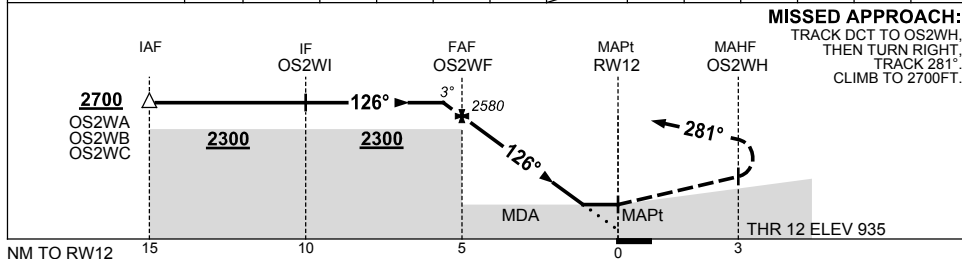


TR	IN	TURN	TIME	MIN ALT	DME LMT
126°	Right		1	2700	



AD ELEV 935
Bearings are Magnetic
Elevations in FEET AMSL

NM TO NEXT WPT	0.4	OS2WF	4	3	2	1.5	RW12				
ALT (3° APCH PATH)	2700	2580	2260	1940	1620	1470					



MISSED APPROACH:
TRACK DCT TO OS2WH,
THEN TURN RIGHT,
TRACK 281°.
CLIMB TO 2700FT.

NOTES

- MAX IAS: INITIAL : 210KT.

CATEGORY	A	B	C	D
LNAV	1470 (535-3.0)			NOT APPLICABLE
CIRCLING	1530 (595-2.4)	1680 (745-4.0)		
ALTERNATE	(1095-4.4)		(1245-6.0)	

Changes: MINIMA, MAG VAR, WPT NAMING CONVENTION.

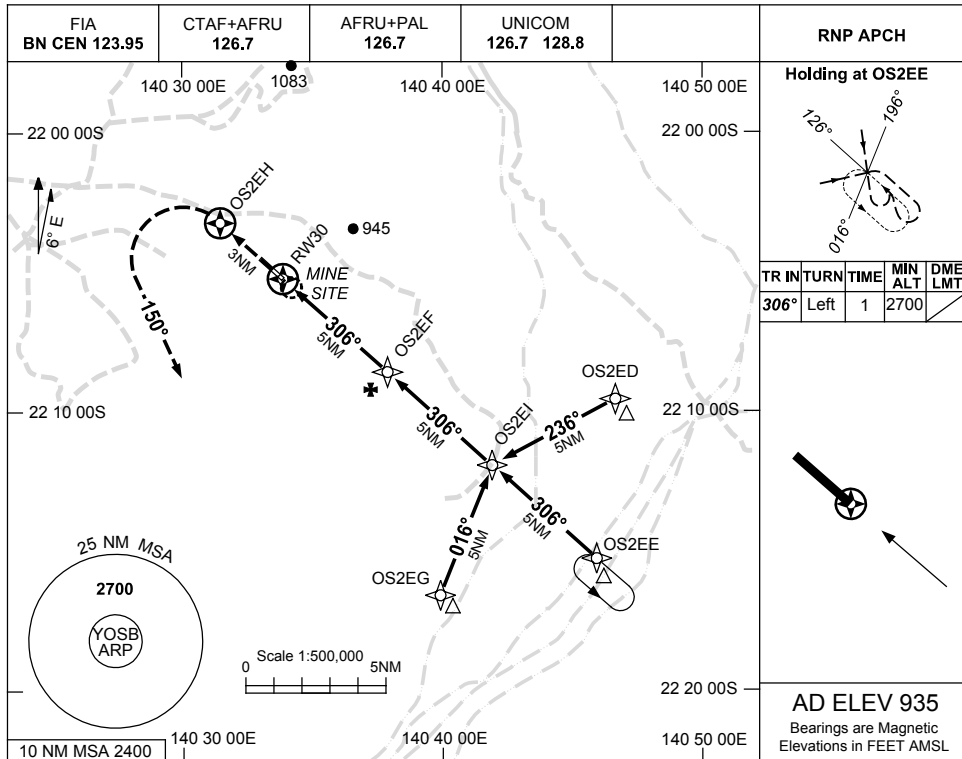
OSBGN01-175

USE QNH

RNP RWY 30

OSBORNE MINE, QLD (YOSB)

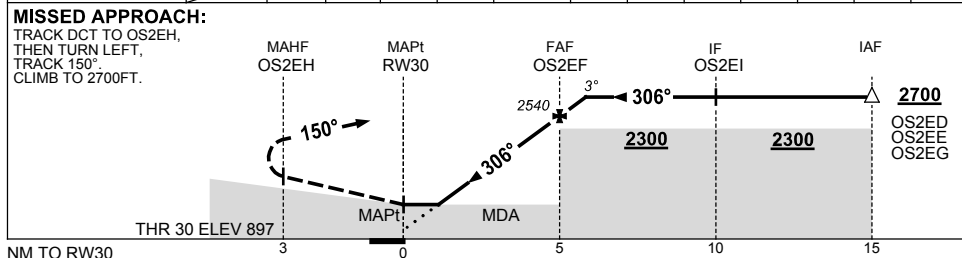
15 JUN 2023



TR IN	TURN	TIME	MIN ALT	DME LMT
306°	Left	1	2700	

AD ELEV 935
Bearings are Magnetic
Elevations in FEET AMSL

NM TO NEXT WPT	RW30	1.6	2	3	4	OS2EF	0.5						
ALT (3° APCH PATH)		1470	1580	1900	2220	2540	2700						



NOTES

1. MAX IAS:
INITIAL : 210KT.

CATEGORY	A	B	C	D
LNAV	1470 (573-3.3)			NOT APPLICABLE
CIRCLING	1530 (595-2.4)	1680 (745-4.0)		
ALTERNATE	(1095-4.4)		(1245-6.0)	

Changes: MINIMA, MAG VAR, WPT NAMING CONVENTION.

OSBGN02-175