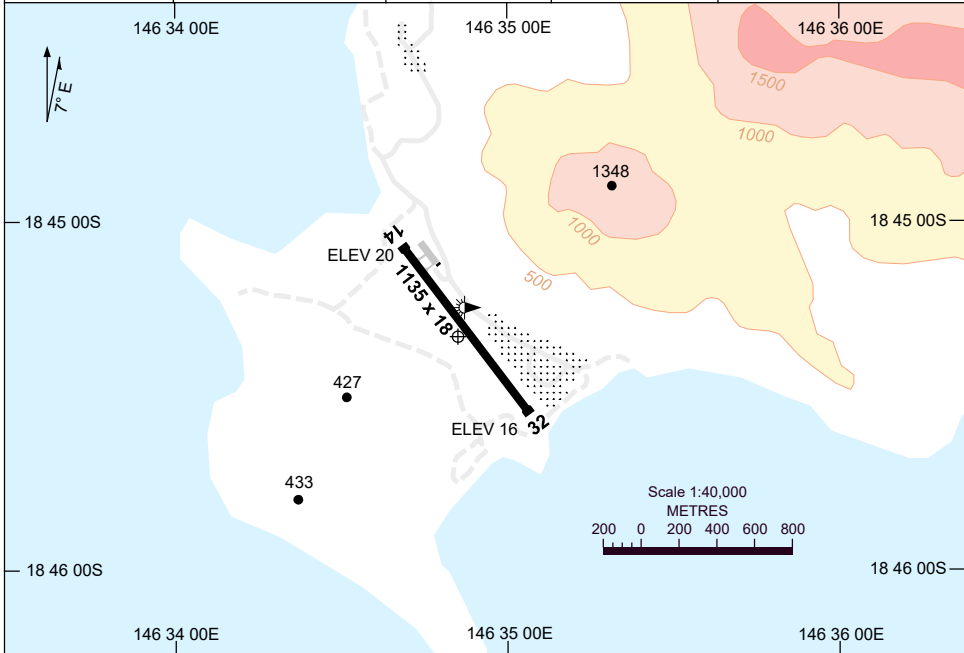


5 SEP 2024

AD ELEV 30
18 45 19S 146 34 53E

AERODROME CHART
PALM ISLAND, QLD (YPAM)

| | | | | |
|-------------------------------|---------------------------------------|---------------|--|--|
| FIA (TWR HR) TVL APP 126.8 | FIA (OUTSIDE TWR HR) BN CEN 120.55 | CTAF 126.7 | | Bearings are Magnetic Elevations in FEET AMSL |
|-------------------------------|---------------------------------------|---------------|--|--|



| AERODROME LIGHTING | |
|--------------------------|--|
| RWY | TAXIWAY : BLUE EDGE RL : EMERG ONLY (MAN ACTIVATE 60 MIN PN , CTC DUTY ARO 24HR 0458 789 464) |
| 14 ¹³⁵ | LIRL PTBL |
| ³¹⁵ 32 | LIRL PTBL |

NOTES

1. FIA FREQ BN CEN 120.55 AVBL IN CIRCUIT AREA ONLY (OUTSIDE TL APCH HOURS).
2. FIA FREQ TOWNSVILLE APP 126.8 AVBL IN CIRCUIT AREA ONLY (DURING TWR HRS).
3. **COLOUR:** SEE SPEC NOTICES.

Changes: Editorial.

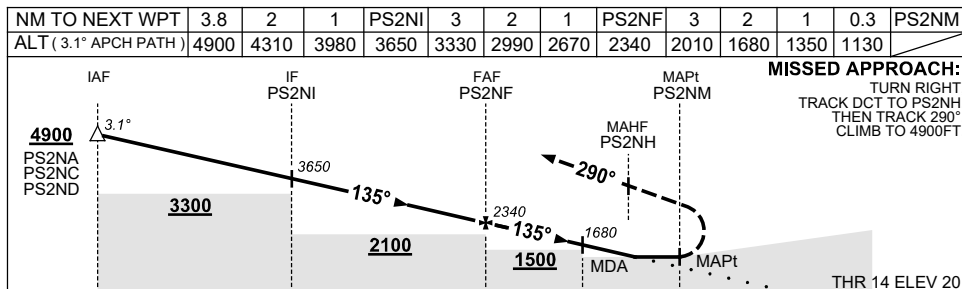
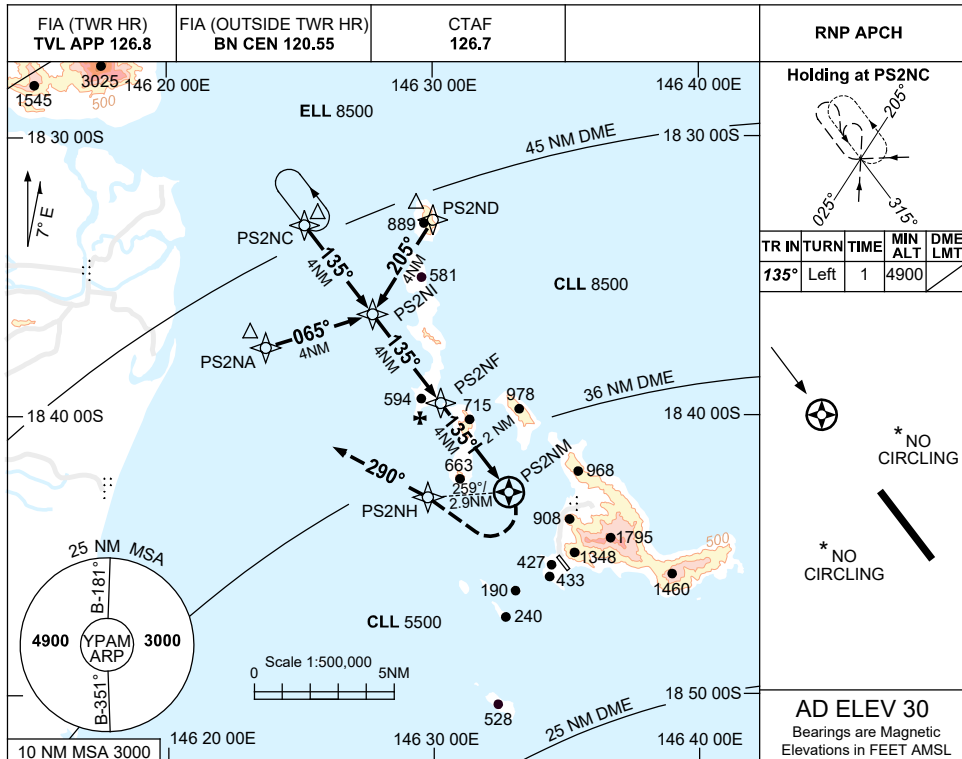
PAMAD01-180

USE QNH

RNP RWY 14

7 SEP 2023

PALM ISLAND, QLD (YPAM)



| | | | | | | |
|-------------|----|---|---|---|---|-----|
| NM TO PS2NM | 12 | 8 | 4 | 2 | 0 | 2.9 |
|-------------|----|---|---|---|---|-----|

| CATEGORY | A | B | C | D |
|-----------|-----------------|---|----------------|---|
| LNAV | 1130 (1110-5.0) | | NOT APPLICABLE | |
| CIRCLING* | NOT AUTHORISED | | | |
| ALTERNATE | NOT APPLICABLE | | | |

NOTES

- MAX IAS: MAP TURN: 130KT.
- * NO CIRCLING
- COLOUR: SEE SPEC NOTICES.
- HOLD AND MISSED APCH OVERLAP WITH YIGM RNP E, ACFT SEPARATION NOT ASSURED.

Changes: MSA, WPT NAMING CONVENTION, NOTE 4, Editorial.

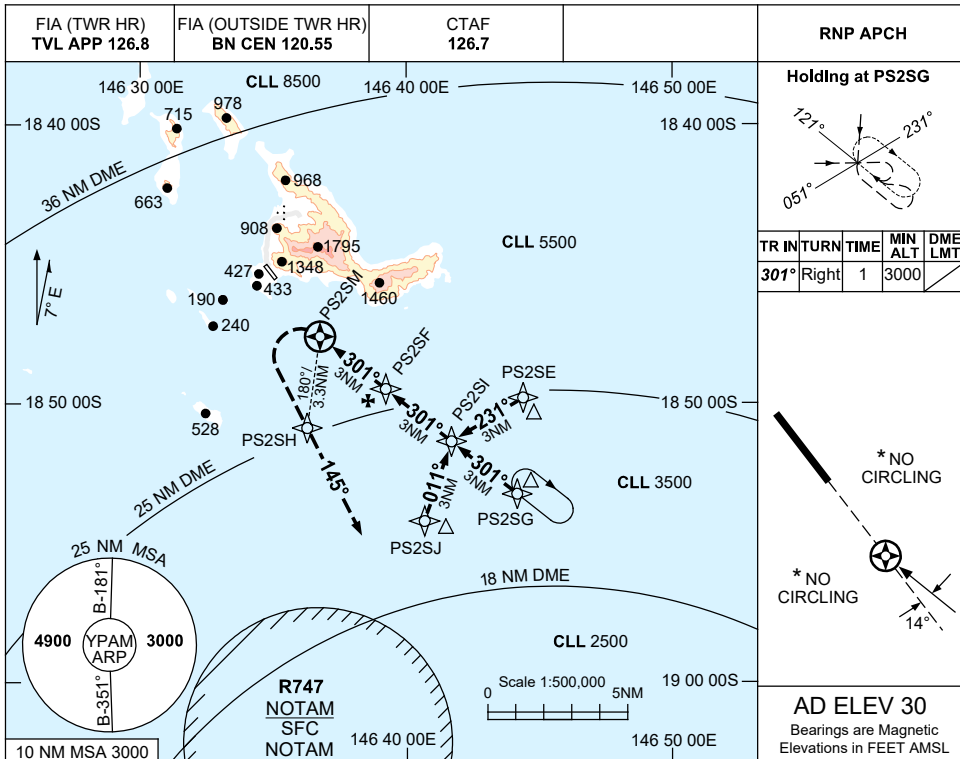
PAMGN01-176

USE QNH

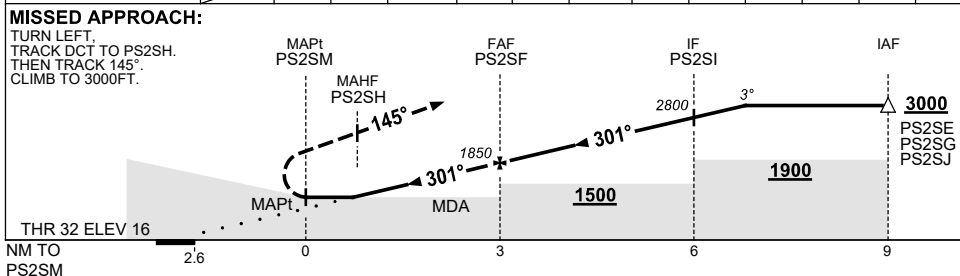
RNP Z RWY 32

PALM ISLAND, QLD (YPAM)

7 SEP 2023



| | | | | | | | | | | | | |
|--------------------|-------|------|------|-------|------|------|-------|------|--|--|--|--|
| NM TO NEXT WPT | PS2SM | 1 | 2 | PS2SF | 1 | 2 | PS2SI | 0.6 | | | | |
| ALT (3° APCH PATH) | | 1210 | 1530 | 1850 | 2170 | 2490 | 2800 | 3000 | | | | |



NOTES

| CATEGORY | A | B | C | D |
|-----------|----------------------|---|-----------------------|---|
| LNAV | 890 (874-5.0) | | NOT APPLICABLE | |
| CIRCLING* | NOT AUTHORISED | | | |
| ALTERNATE | NOT APPLICABLE | | | |

1. MAX IAS:
INITIAL : 170KT.
MAP TURN: 130KT.
- * 2. NO CIRCLING
3. **COLOUR:** SEE SPEC NOTICES.

Changes: MSA, WPT NAMING CONVENTION, MINIMA, VPA, Editorial.

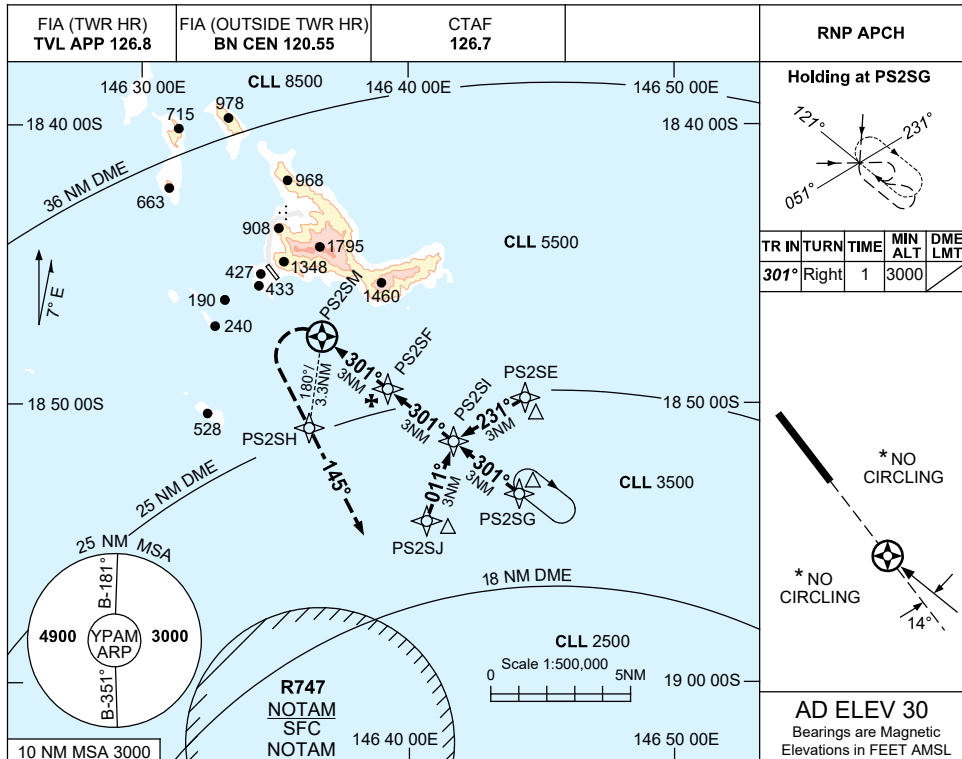
PAMGN02-176

USE QNH

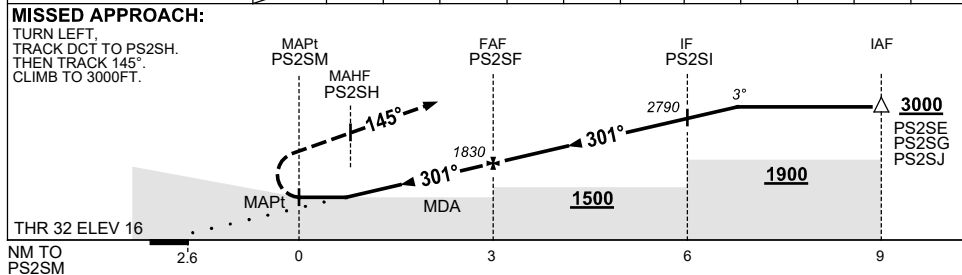
RNP Y RWY 32

7 SEP 2023

PALM ISLAND, QLD (YPAM)



| | | | | | | | | | | | |
|--------------------|-------|------|------|-------|------|------|-------|------|--|--|--|
| NM TO NEXT WPT | PS2SM | 1 | 2 | PS2SF | 1 | 2 | PS2SI | 0.7 | | | |
| ALT (3° APCH PATH) | | 1200 | 1520 | 1830 | 2150 | 2470 | 2790 | 3000 | | | |



NOTES

- * 1. NO CIRCLING OR VAA-H AVBL.
- 2. COLOUR: SEE SPEC NOTICES.

| | |
|-----------------|----------------------|
| CATEGORY | H |
| LNAV | 870 (854-5.0) |
| CIRCLING * | NOT APPLICABLE |
| ALTERNATE | NOT APPLICABLE |

Changes: MSA, WPT NAMING CONVENTION, MINIMA, GRID COORD FORMAT, Editorial.

PAMGN03-176