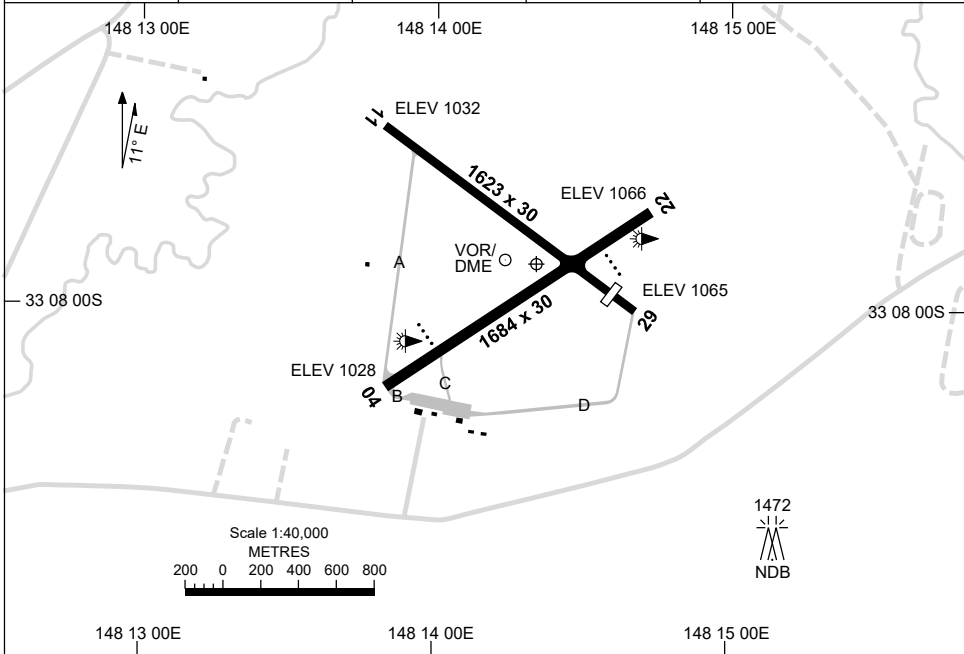


24 MAR 2022

AD ELEV 1069
33 07 53S 148 14 21E

AERODROME CHART
PARKES, NSW (YPKS)

AWIS 128.55	FIA ML CEN 135.25	CTAF+AFRU 126.7	PAL+AA 119.6	Bearings are Magnetic Elevations in FEET AMSL
----------------	----------------------	--------------------	-----------------	--



RWY		AERODROME LIGHTING
		TAXIWAY : BLUE EDGE RUNWAY : PAL+AA 119.6 , SDBY (1 MINUTE)
04 ⁰⁴⁴		PAPI 3.0° 48FT LIRL RTIL
²²⁴ 22		PAPI 3.0° 48FT LIRL RTIL
11 ¹¹⁴		NIL
²⁹⁴ 29		NIL

NOTES

1. AWIS FREQ RQ 1 SEC TRANSMIT PULSE TO ACTIVATE.
2. FIA FREQ 135.25 AVBL IN CIRCUIT AREA.

Changes: PAL+AA, NOTE 2 DELETED, Editorial.

PKSAD01-170

DME or GNSS ARRIVAL PROCEDURES PARKES, NSW (YPKS)

24 MAR 2022

AWIS 128.55	FIA ML CEN 135.25	CTAF+AFRU 126.7	PAL+AA 119.6	Bearings are Magnetic Elevations in FEET AMSL
----------------	----------------------	--------------------	-----------------	--

25 NM MSA
3900
PKS VOR or NDB

**DME USING PKS DME
REFERENCE WAYPOINT PKS VOR**

PKS VOR/DME 112.0
PKS NDB 242

10 NM MSA 3800

AD ELEV 1069

BHI TO PKS

3400
088°
PKS VOR or NDB

VOR or NDB
3400
2500
2780 MDA
3900
280°

MISSED APPROACH:

TURN LEFT,
TRACK 280°. CLIMB TO 3900FT.

MAX IAS IN MAP
TURN 180KT.

NM TO PKS VOR	25	15	10	5	0														
CIRCLING MINIMA	A,B: 2070-2.4		C: 2370-4.0		D: N/A														
NM TO PKS VOR	6.9	6	5	4	3.7	3	2.7												
ALT (3° APCH PATH)	3400	3100	2780	2460	2370	2150	2070												

BTH TO PKS

6100
273°
PKS VOR or NDB

VOR or NDB
3900
3500
2800
2400 MDA
3900
230°

MISSED APPROACH:

TURN LEFT,
TRACK 230°. CLIMB TO 3900FT.

NOTE:
1. DME COVERAGE NOT AVBL AT 3900FT BEYOND 26 NM FM VOR.

NM TO PKS VOR	27	15	14	7	5	4	2	0											
CIRCLING MINIMA	A,B: 2240-2.4		C: 2370-4.0		D: N/A														
NM TO PKS VOR	6.7	6	5	4	3	2	1.9	1.5											
ALT (3° APCH PATH)	3900	3670	3360	3040	2720	2400	2370	2240											

VIRUR TO PKS

6100
278°
PKS VOR or NDB

VOR or NDB
3900
3500
2800
2600 MDA
3900
325°

MISSED APPROACH:

TURN RIGHT,
TRACK 325°. CLIMB TO 3900FT.

NOTE:
1. DME COVERAGE NOT AVBL AT 3900FT BEYOND 22 NM FM VOR.

NM TO PKS VOR	27	15	14	7	5	2	0												
CIRCLING MINIMA	A,B: 2240-2.4		C: 2370-4.0		D: N/A														
NM TO PKS VOR	6.1	6	5	4	3	2	1.3	1	0.9										
ALT (3° APCH PATH)	3900	3870	3550	3230	2920	2600	2370	2280	2240										

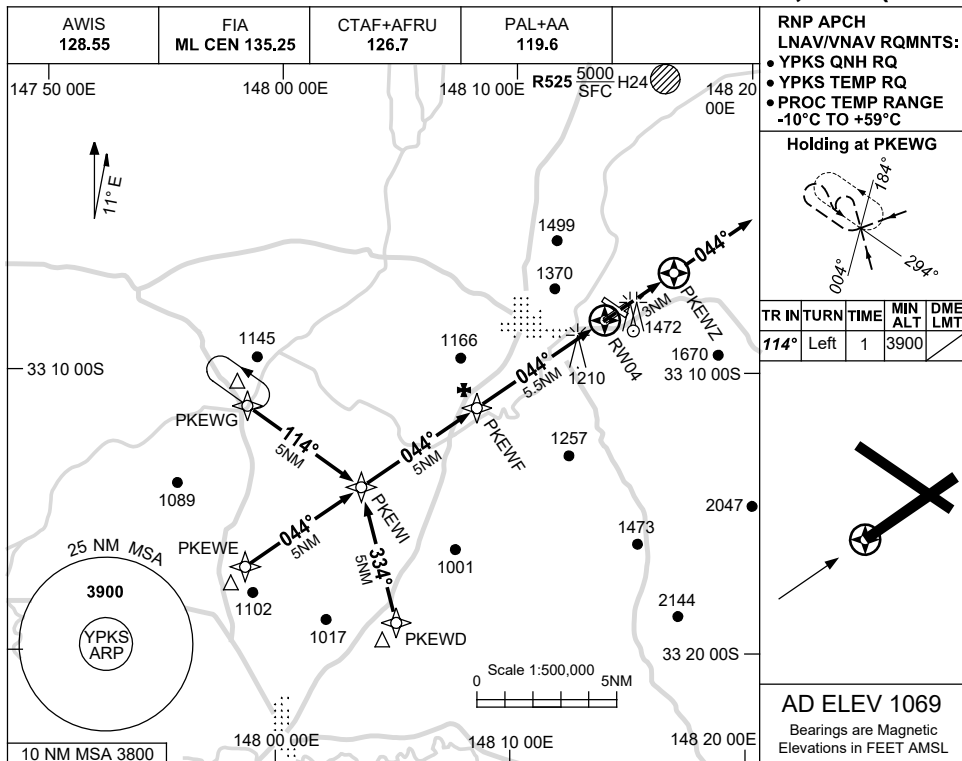
Changes: MINIMA, DIST/ALT TABLE, PAL+AA.

PKSDG01-170

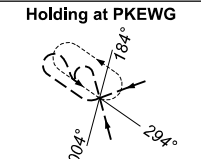
USE QNH

RNP RWY 04
PARKES, NSW (YPKS)

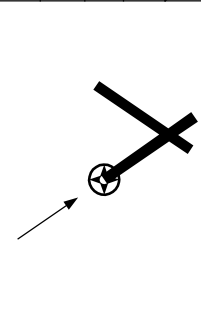
15 JUN 2023



RNP APCH
 LNAV/VNAV RQMNTS:
 • YPKS QNH RQ
 • YPKS TEMP RQ
 • PROC TEMP RANGE
 -10°C TO +59°C

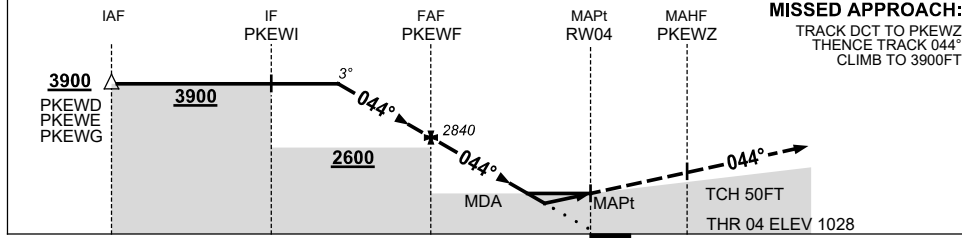


TR	IN	TURN	TIME	MIN ALT	DME LMT
114°	Left	1	3900		



AD ELEV 1069
 Bearings are Magnetic
 Elevations in FEET AMSL

NM TO NEXT WPT	3.3	3	2	1	PKEWF	4	3	2	1.8	1.1	RW04		
ALT (3° APCH PATH)	3900	3800	3480	3160	2840	2350	2030	1720	1660	1440			



MISSED APPROACH:
 TRACK DCT TO PKEWZ,
 THENCE TRACK 044°,
 CLIMB TO 3900FT.

NOTES

CATEGORY	A	B	C	D
LNAV/VNAV		1440 (412-2.3)		NOT APPLICABLE
LNAV		1660 (632-3.6)		
CIRCLING	2070 (1001-2.4)		2370 (1301-4.0)	
ALTERNATE		(1501-4.4)	(1801-6.0)	

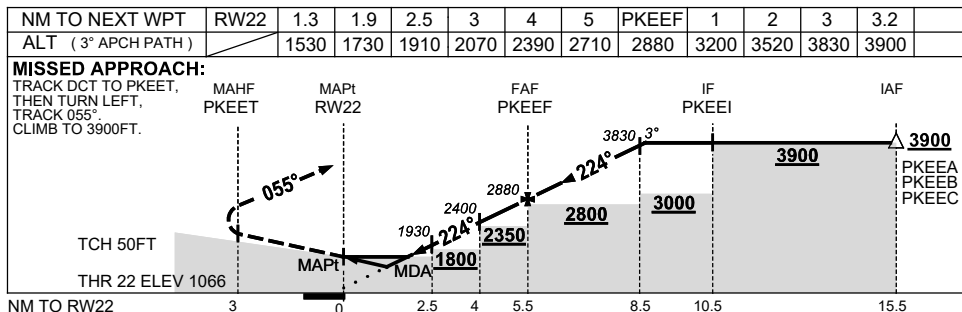
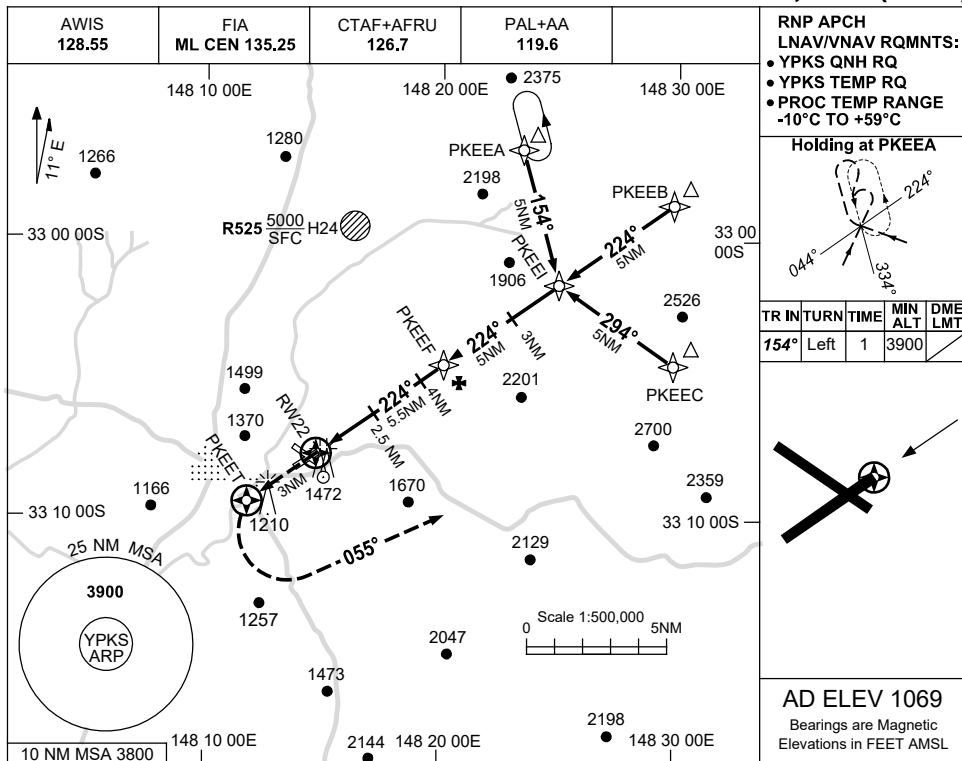
1. MAX IAS:
 INITIAL : 230KT.

Changes: CHART TITLE, PBN SPECIFICATION BOX, Editorial. PKSGN01-175

USE QNH

RNP RWY 22
PARKES, NSW (YPKS)

15 JUN 2023



NOTES

CATEGORY	A	B	C	D
LNAV/VNAV		1530 (464-2.6)		NOT APPLICABLE
LNAV		1730 (661-3.8)		
CIRCLING	2070 (1001-2.4)		2370 (1301-4.0)	
ALTERNATE		(1501-4.4)	(1801-6.0)	

1. MAX IAS:
 INITIAL : 230KT.

Changes: CHART TITLE, PBN SPECIFICATION BOX, Editorial.

PKSGN02-175

