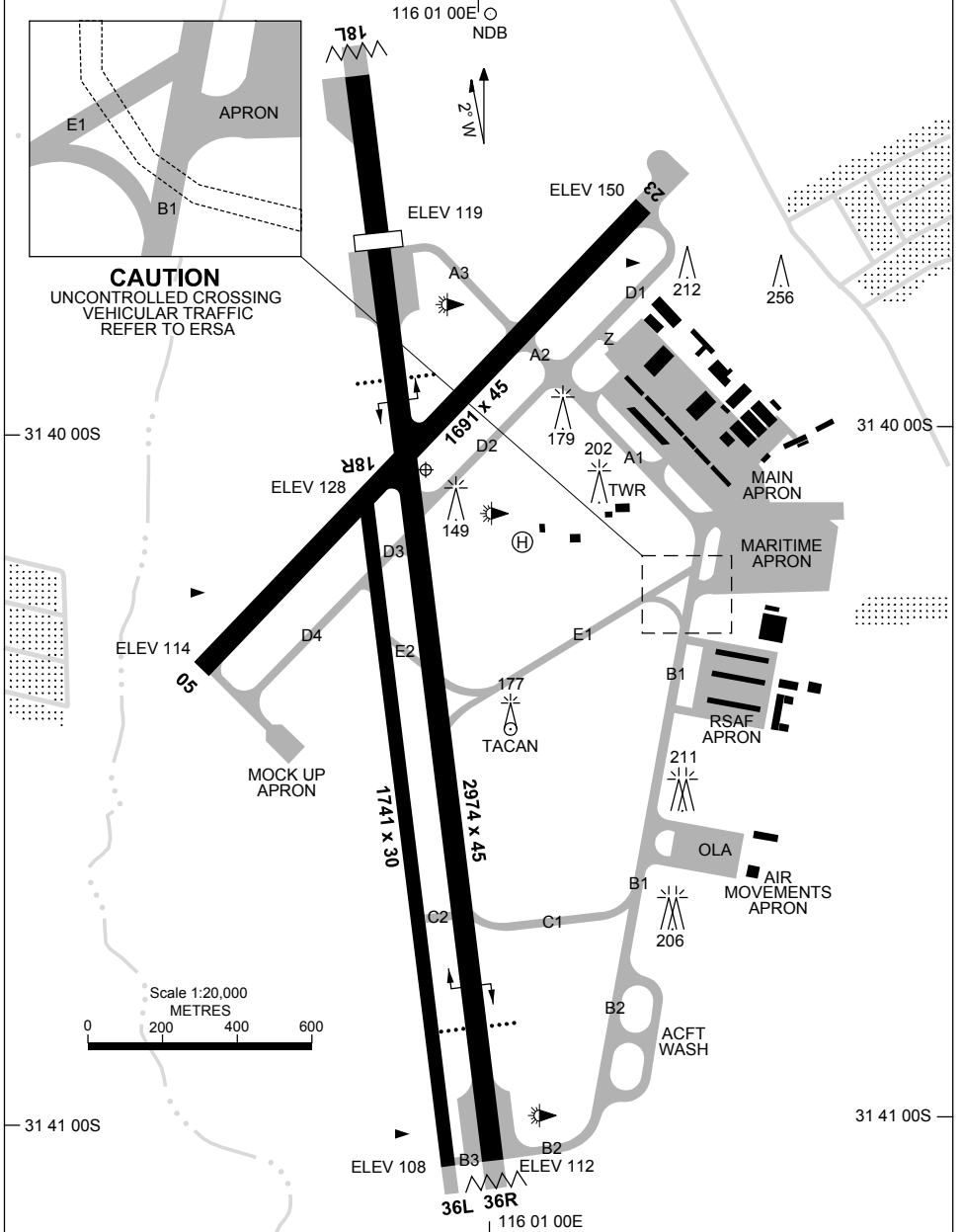


13 JUN 2024

AD ELEV 150
31 40 04S 116 00 54E

AERODROME CHART - Page 1
PEARCE, WA (YPEA)

ATIS 340 136.4 316.1	ACD 134.1	SMC 127.25	TWR 118.3 257.8	DEP PEA CEN 123.3 135.9	APP PEA APP 130.2	FIA (AH) PH CEN 135.25	CTAF+AFRU (AH) 118.3	AWIS (AH) 316.1	Bearings are Magnetic Elevations in FEET AMSL
----------------------------	--------------	---------------	--------------------	-------------------------------	-------------------------	------------------------------	-------------------------	--------------------	--



Changes: VAR.

PEAAD01-179

21 MAR 2024

AD ELEV 150
31 40 04S 116 00 54E

AERODROME CHART - Page 2
PEARCE, WA (YPEA)

ATIS 340 136.4 316.1	ACD 134.1	SMC 127.25	TWR 118.3 257.8	DEP PEA CEN 123.3 135.9	APP PEA APP 130.2	FIA (AH) PH CEN 135.25	CTAF+AFRU (AH) 118.3	AWIS (AH) 316.1	Bearings are Magnetic Elevations in FEET AMSL
----------------------------	--------------	---------------	--------------------	-------------------------------	-------------------------	------------------------------	-------------------------	--------------------	--

--	--	--	--	--	--	--	--	--	--

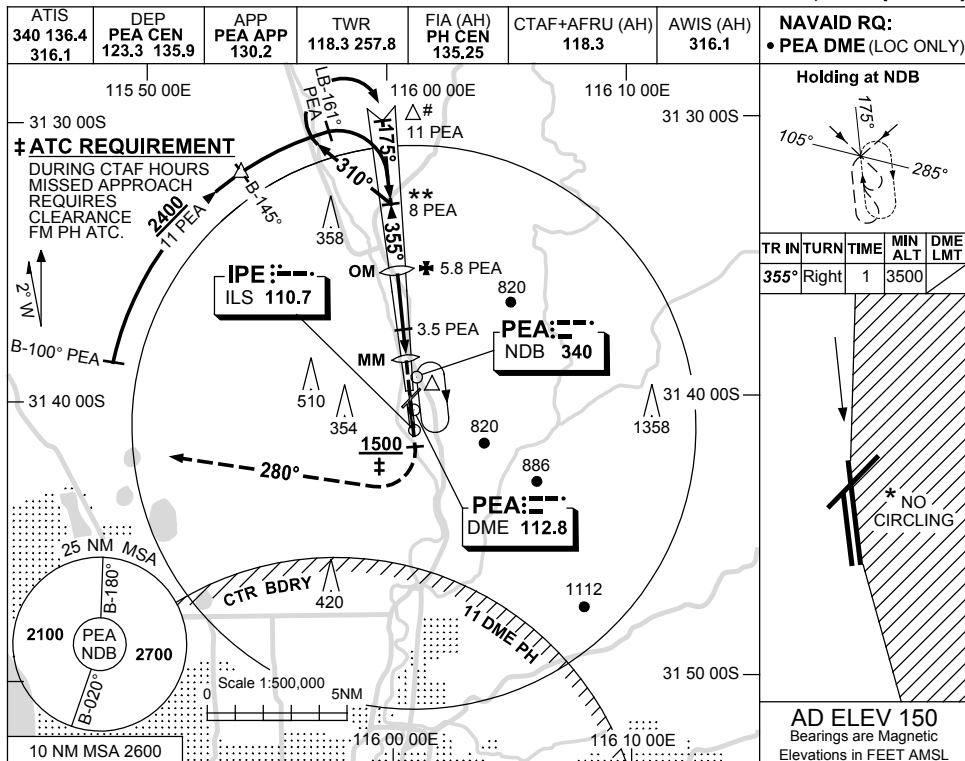
RWY	AERODROME LIGHTING								
		TAXIWAYS : GREEN CENTRELINE , BLUE EDGE RL :							
05 ⁰⁴⁶ 226 23	MIRL PTBL MIRL PTBL								
18L ¹⁷⁵ 355 36R	PAPI 3.0° 47FT MIRL PTBL PAPI 3.0° 68FT MIRL PTBL								
18R ¹⁷⁵ 355 36L	NIL NIL								

<p>NOTES</p> <p>1. PTBL LIGHTING 15MIN PN.</p>									
---	--	--	--	--	--	--	--	--	--

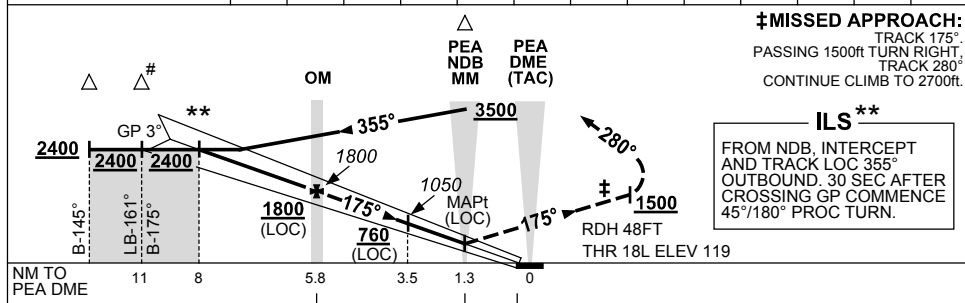
USE QNH

ILS-Z or LOC-Z RWY 18L
PEARCE, WA (YPEA)

13 JUN 2024



DIST TO PEA DME	7.7	7	6	5.8	5	4	3.5	3	2.3				
ALT (3° APCH PATH)	2400	2170	1850	1800	1530	1210	1050	890	660				



NOTES

CATEGORY	A	B	C	D
S-I ILS		430 (311)	1.7 (VIS 1.5 WITH ACTUAL QNH)	
S-I LOC/DME		660 (541-3.1)		
CIRCLING *	780 (630-2.4)		1010 (860-4.0)	1070 (920-5.0)
ALTERNATE	(1130-4.4)		(1360-6.0)	(1420-7.0)

1. RADAR VECTORS TO IAF ONLY.
 * 2. NO CIRCLING EAST OF RWY 18L/36R.
 3. TRAINING DURING CTAF HOURS - REFER ERSA FAC.

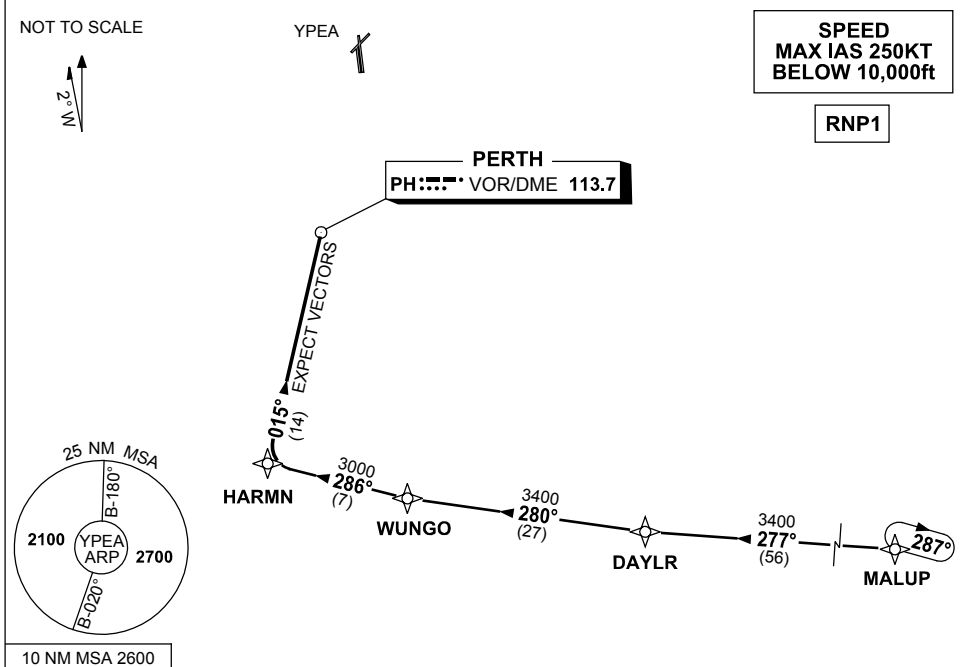
Changes: VAR.

PEAI01-179

**STANDARD INSTRUMENT ARRIVAL (STAR)
PEARCE FOUR WHISKEY ARRIVAL (RNAV)
PEARCE, WA (YPEA)**

13 JUN 2024

ATIS 340 136.4 316.1	DEP PEA CEN 123.3 135.9	APP PEA APP 130.2	TWR 118.3 257.8	FIA (AH) PH CEN 135.25	CTAF+AFRU (AH) 118.3	AWIS (AH) 316.1	Bearings are Magnetic Elevations in FEET AMSL
----------------------------	-------------------------------	-------------------------	--------------------	---------------------------	-------------------------	--------------------	--



TRANSITIONS:

- MALUP:** (NON-JET)
- From MALUP track 277° to DAYLR
 - Turn RIGHT, track 280° to WUNGO
 - Then follow ARRIVAL instructions

ARRIVAL: PEARCE FOUR WHISKEY

- From WUNGO turn RIGHT
- Track 286° to HARMN
- Turn RIGHT, track 015° to PH VOR
- Expect radar vectors to YPEA

COMMUNICATIONS FAILURE: PROCEDURE IN IMC

- Squawk 7600, comply with vertical navigation requirements, but not below MSA.
- Track via the latest STAR clearance to the nominated runway, then fly the most suitable approach in accordance with ERSA EMERG Section 1.5.

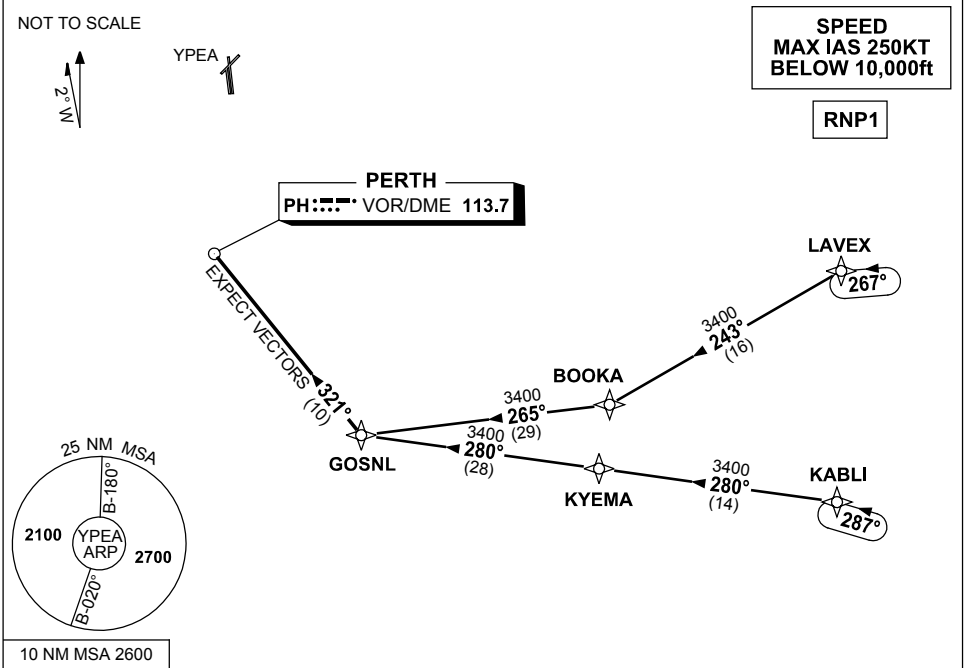
Changes: MALUP REPLACES HAMTN, VALIDITY INDICATOR, VAR, Editorial.

PEASR01-179

**STANDARD INSTRUMENT ARRIVAL (STAR)
PEARCE FOUR GOLF ARRIVAL (RNAV)
PEARCE, WA (YPEA)**

13 JUN 2024

ATIS 340 136.4 316.1	DEP PEA CEN 123.3 135.9	APP PEA APP 130.2	TWR 118.3 257.8	FIA (AH) PH CEN 135.25	CTAF+AFRU (AH) 118.3	AWIS (AH) 316.1	Bearings are Magnetic Elevations in FEET AMSL
----------------------------	-------------------------------	-------------------------	--------------------	---------------------------	-------------------------	--------------------	--



TRANSITIONS:

- LAVEX:**
(NON-JET)
- From LAVEX track 243° to BOOKA
 - Turn RIGHT, track 265° to GOSNL
 - Then follow ARRIVAL instructions

- KABL I:**
(JET)
- From KABL I track 280° to KYEMA
 - Track 280° to GOSNL
 - Then follow ARRIVAL instructions

ARRIVAL: PEARCE FOUR GOLF

- From GOSNL, turn RIGHT, track 321° to PH VOR
- Expect radar vectors to YPEA

COMMUNICATIONS FAILURE: PROCEDURE IN IMC

- Squawk 7600, comply with vertical navigation requirements, but not below MSA.
- Track via the latest STAR clearance to the nominated runway, then fly the most suitable approach in accordance with ERSA EMERG Section 1.5.

Changes: LAVEX REPLACES GRENE, KABL I REPLACES BEVLY, VALIDITY INDICATOR, VAR, Editorial.

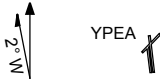
PEASR02-179

**STANDARD INSTRUMENT ARRIVAL (STAR)
PEARCE FOUR ROMEO ARRIVAL (RNAV)
PEARCE, WA (YPEA)**

13 JUN 2024

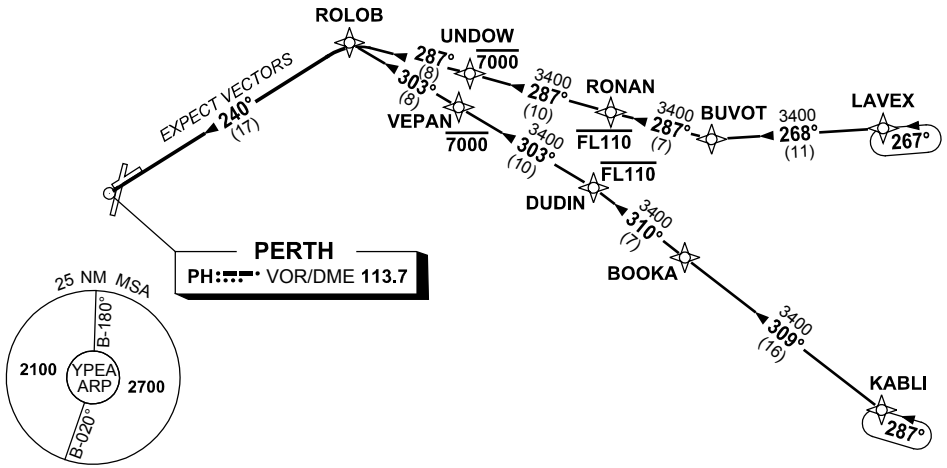
ATIS 340 136.4 316.1	DEP PEA CEN 123.3 135.9	APP PEA APP 130.2	TWR 118.3 257.8	FIA (AH) PH CEN 135.25	CTAF+AFRU (AH) 118.3	AWIS (AH) 316.1	Bearings are Magnetic Elevations in FEET AMSL
----------------------------	--------------------------------------	--------------------------------	--------------------	----------------------------------	-------------------------	--------------------	--

NOT TO SCALE



**SPEED
MAX IAS 250KT
BELOW 10,000ft**

RNP1



TRANSITIONS:

- LAVEX:**
- From LAVEX, track 268° to BUVOT, (NON-JET)
 - Turn RIGHT, track 287° to RONAN, **Cross** RONAN AT or BLW FL110,
 - Track 287° to UNDOU, **Cross** UNDOU AT or BLW 7000ft,
 - Track 287° to ROLOB, Then follow ARRIVAL instructions

- KABL:**
- From KABL, track 309° to BOOKA, (JET)
 - Track 310° to DUDIN, **Cross** DUDIN AT or BLW FL110,
 - Turn LEFT, track 303° to VEPAN, **Cross** VEPAN AT or BLW 7000ft,
 - Track 303° to ROLOB, Then follow ARRIVAL instructions

ARRIVAL: PEARCE FOUR ROMEO

- From ROLOB turn LEFT
- Track 240° to PH VOR
- Expect radar vectors to YPEA

COMMUNICATIONS FAILURE: PROCEDURE IN IMC

- Squawk 7600, comply with vertical navigation requirements, but not below MSA.
- Track via the latest STAR clearance to the nominated runway, then fly the most suitable approach in accordance with ERSA EMERG Section 1.5.