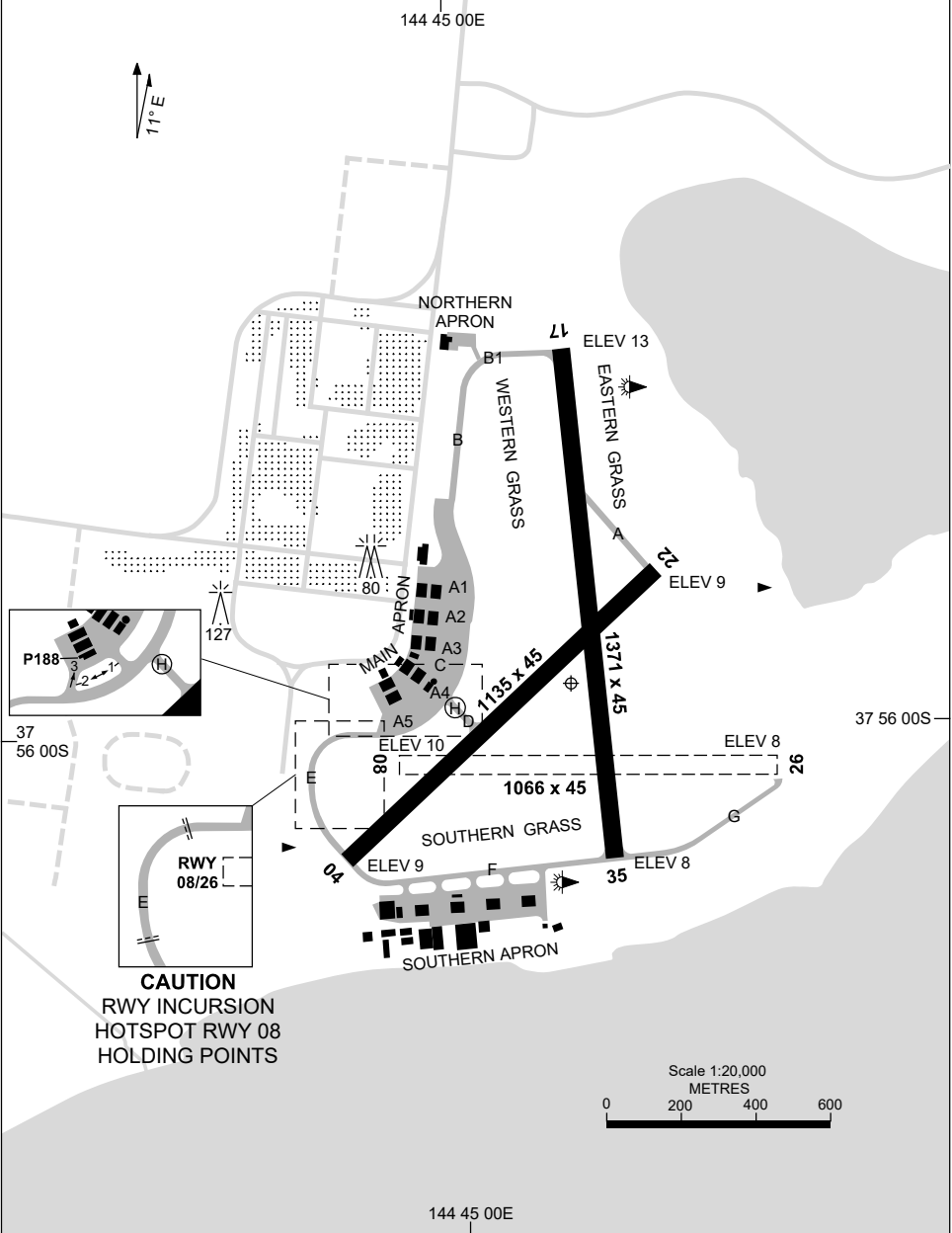


16 JUN 2022

AD ELEV 14  
37 55 56S 144 45 12E

AERODROME CHART - Page 1  
**POINT COOK, VIC (YMPC)**

AWIS 122.675	FIA ML CEN 135.7	CTAF+AFRU 126.2	AFRU+PAL 126.2	Bearings are Magnetic Elevations in FEET AMSL
-----------------	---------------------	--------------------	-------------------	--



Changes: AWIS.

MPCAD01-171

15 JUN 2023

AD ELEV 14  
37 55 56S 144 45 12E

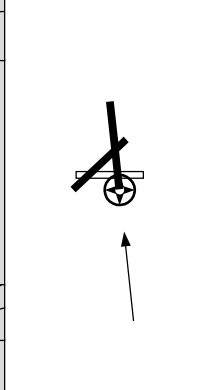
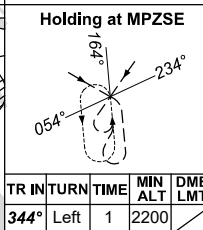
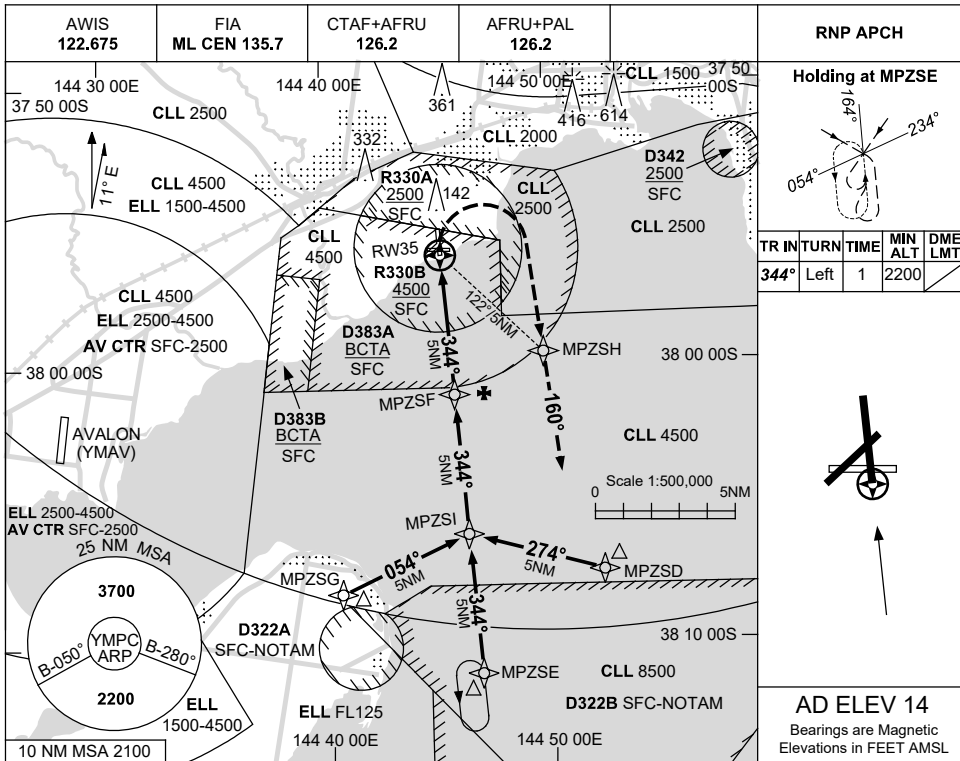
AERODROME CHART - Page 2  
**POINT COOK, VIC (YMPC)**

AWIS 122.675	FIA ML CEN 135.7	CTAF+AFRU 126.2	AFRU+PAL 126.2	Bearings are Magnetic Elevations in FEET AMSL
<b>AERODROME LIGHTING</b>				
<b>RWY</b>	TAXIWAY : GREEN CENTRELINE RL : AFRU+PAL 126.2			
<b>04</b> <sup>036</sup> 216 <b>22</b>	NIL NIL			
<b>17</b> <sup>164</sup> 344 <b>35</b>	LIRL LIRL			
<b>08</b> <sup>079</sup> 259 <b>26</b>	NIL NIL			
<b>NOTES</b>				

Changes: CAUTION NOTE DELETED.

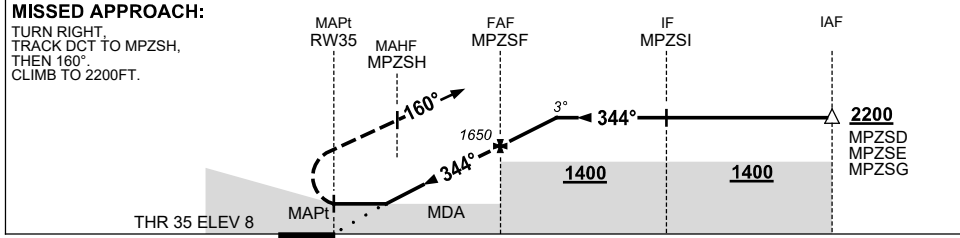
MPCAD02-175

15 JUN 2023



**AD ELEV 14**  
Bearings are Magnetic  
Elevations in FEET AMSL

NM TO NEXT WPT	RW35	1.5	2	3	4	MPZSF	1	1.7				
ALT (3° APCH PATH)		550	690	1010	1330	1650	1970	2200				



NM TO RW35 0 5 10 15

**NOTES**

CATEGORY	A	B	C	D
LNAV	550 (536-3.0)			NOT APPLICABLE
CIRCLING	610 (596-2.4)		870 (856-4.0)	
ALTERNATE	(1096-4.4)		(1356-6.0)	

- MAX IAS: INITIAL : 210KT, MAP TURN: 160KT.
- FOR RESTRICTIONS SEE ERSA.
- APCH CONFLICTS WITH YMMB NDB-A AV-MB TRACK.

Changes: REMOVED PLUME SYMBOL.

MPCGN01-175