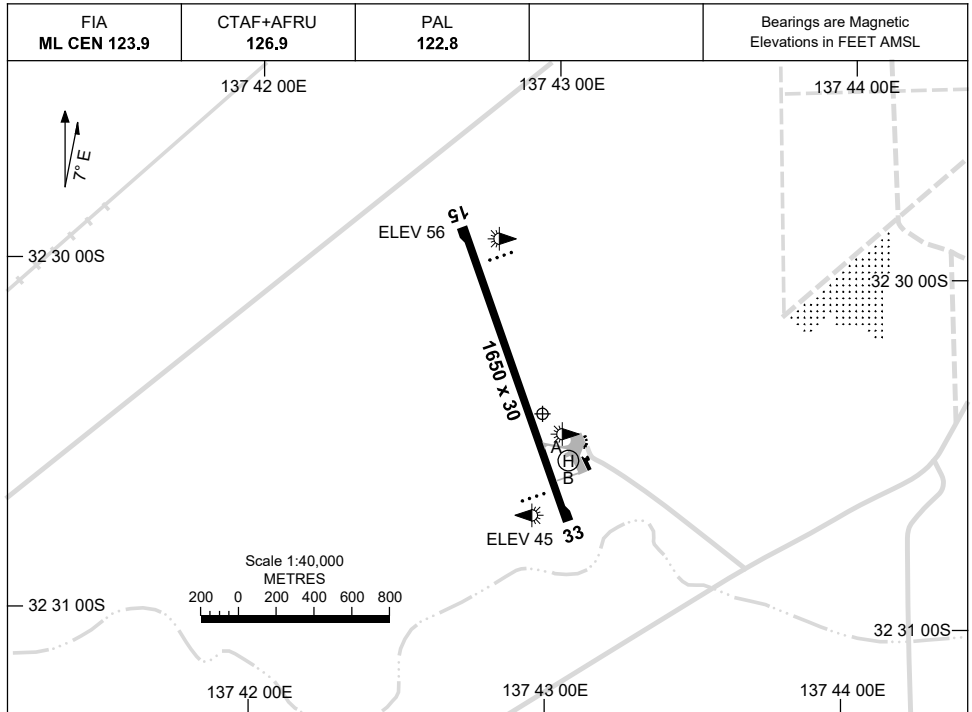


23 MAR 2023

AD ELEV 56
32 30 25S 137 43 00E

AERODROME CHART
PORT AUGUSTA, SA (YPAG)



	AERODROME LIGHTING
RWY	TWY : BLUE EDGE ON A AND UNSEALED PORTION OF B. RL : PAL 122.8 , SDBY (15 SEC)
15 <small>152</small>	PAPI 3.0° 45FT LIRL
<small>332</small> 33	PAPI 3.0° 45FT LIRL

NOTES

1. AWIS (PHONE) 08 8150 3814
2. FIA FREQ 123.9 AVBL CIRCUIT AREA. LIMITED COVERAGE ON GROUND.

Changes: NOTE 3 DELETED, LIGHTING.

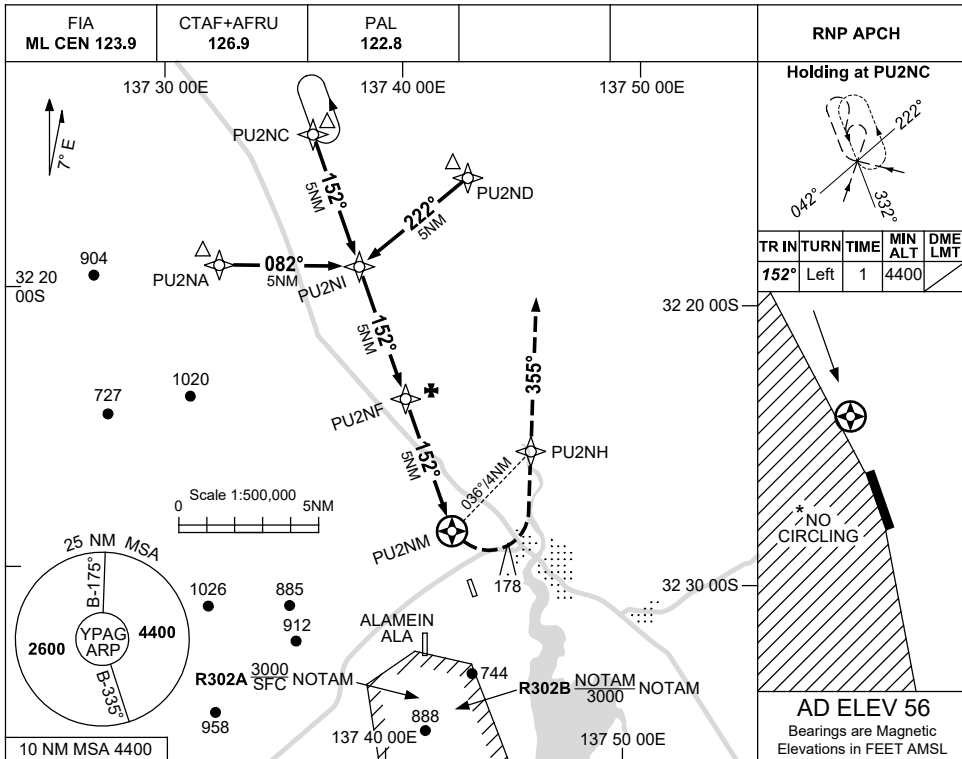
PAGAD01-174

USE QNH

RNP RWY 15

1 DEC 2022

PORT AUGUSTA, SA (YPAG)



NM TO NEXT WPT	1.9	1	PU2NI	4	3	2	1	PU2NF	4	3	2	1	PU2NM
ALT (3° APCH PATH)	4400	4110	3790	3470	3150	2830	2520	2200	1880	1560	1240	920	600

NM TO PU2NM	15	10	5	0	1.6
IAF	4400				
IF PU2NI		3790			
MAPt PU2NM			2200		
MDA					
THR 15 ELEV 56					

MISSED APPROACH:
 TURN LEFT, TRACK DCT TO PU2NH, THEN TRACK 355°, CLIMB TO 4400FT.

CATEGORY	A	B	C	D
LNAV	600 (544-3.1)			NOT APPLICABLE
CIRCLING*	780 (724-2.4)	1070 (1014-4.0)		
ALTERNATE	(1224-4.4)	(1514-6.0)		

NOTES

- MAX IAS: INITIAL : 230KT. MAP TURN: 180KT.
- NO CIRCLING WEST OF RWY 15/33.
- CAUTION:** ALAMEIN ALA 2.2 NM SSW OF AD.
- AWIS(PHONE) 08 8150 3814

Changes: CHART TITLE, PBN SPECIFICATION BOX.

PAGGN01-173