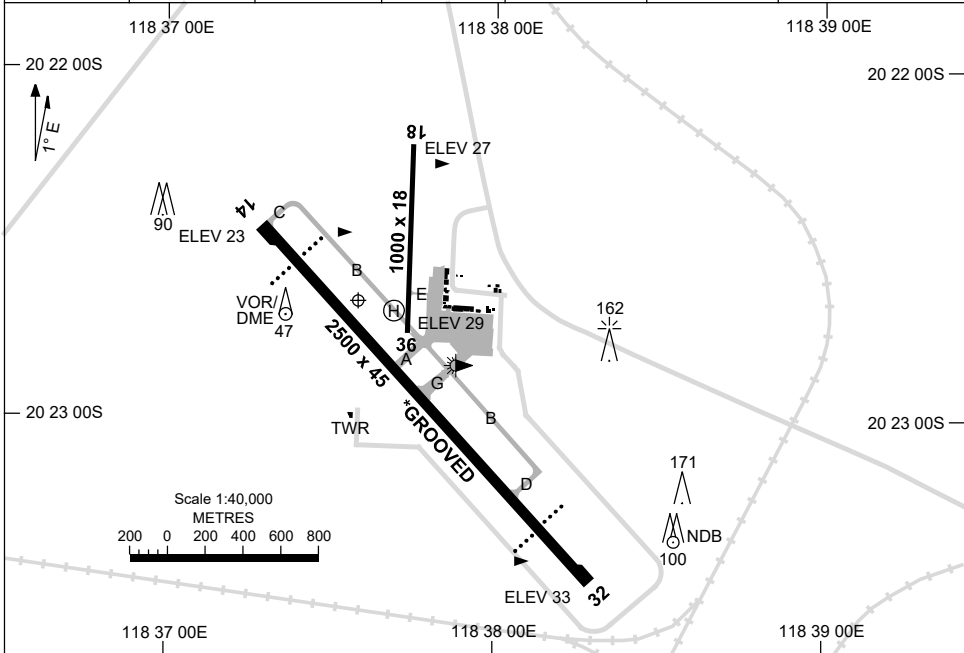


5 SEP 2024

AD ELEV 33  
20 22 40S 118 37 35E

**AERODROME CHART**  
**PORT HEDLAND, WA (YPPD)**

AWIS (H24) <b>133.2</b>	ATIS (AFIS HR) <b>133.65</b>	AFIS <b>119.9</b>	FIA (AH) <b>ML CEN 118.6</b>	CTAF+AFRU (AH) <b>119.9</b>	AFRU+PAL (AH) <b>119.9</b>	Bearings are Magnetic Elevations in FEET AMSL
----------------------------	---------------------------------	----------------------	---------------------------------	--------------------------------	-------------------------------	--



RWY	AERODROME LIGHTING	
		TAXIWAYS : GREEN CENTRELINE RL : AFRU+PAL 119.9 , SDBY (15 SEC)
<b>14</b> <sup>136</sup>	PAPI 3.0° 49FT MIRL	
<sup>316</sup> <b>32</b>	PAPI 3.0° 49FT MIRL	
<b>18</b> <sup>181</sup>	LIRL	
<sup>001</sup> <b>36</b>	LIRL	

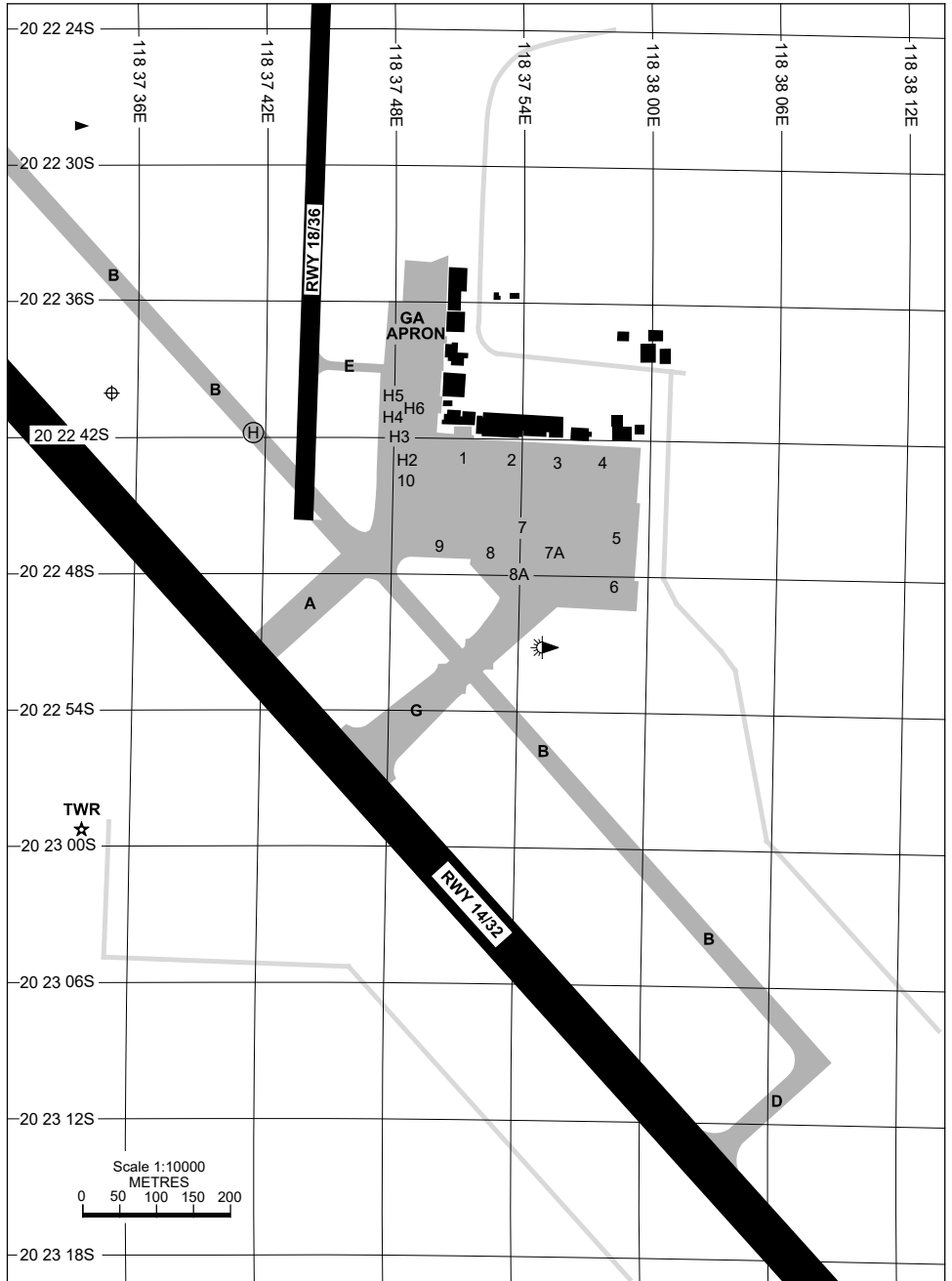
**NOTES**

- PAPI AND LIGHTING ARE ON DURING AFIS HR.  
PAL WILL ACTIVATE LIGHTING OUTSIDE OF AFIS HR.
- PAL ACTIVATES STAGE 2 LIGHTING. ALL OTHER STAGES ACTIVATED BY AFIS OR DUTY AIRPORT OPERATIONS OFFICER UPON REQUEST.
- MAIN APRON LIGHTING ACTIVATED BY PAL.
- AWIS RQ 1 SEC PULSE TO ACTIVATE.

Changes: NOTE 4 ADDED.

PPDAD01-180

7 SEP 2023



Changes: REMOVED H1, ADDED 10.

PPDAP01-176

PARKING POSITION INFORMATION

STAND	CO-ORDINATES	ELEV (ft)	CAPACITY	HYDRANT FUEL	DOCKING SYSTEM
1	20 22 42.72S 118 37 51.44E	27	A321/B738	NIL	NIL
2	20 22 42.81S 118 37 53.66E	25	A321/B738	NIL	NIL
3	20 22 42.91S 118 37 55.88E	24	A321/B738	NIL	NIL
4	20 22 43.01S 118 37 58.10E	22	A321/B738	NIL	NIL
5	20 22 46.14S 118 37 58.57E	23	A321/B738	NIL	NIL
6	20 22 48.31S 118 37 58.47E	24	A321/B738	NIL	NIL
7	20 22 45.96S 118 37 54.49E	25	A320/B738	NIL	NIL
7A	20 22 46.91S 118 37 55.41E	25	A320/B738	NIL	NIL
8	20 22 46.71S 118 37 52.74E	27	A124/B744	NIL	NIL
8A	20 22 47.83S 118 37 53.83E	27	A124/B744	NIL	NIL
9	20 22 46.84S 118 37 50.26E	29	A321/B738/C130	NIL	NIL
10	20 22 43.39S 118 37 48.86E	29	A21N	NIL	NIL
H2	20 22 42.81S 118 37 48.79E	28	S92	NIL	NIL
H2A	20 22 42.22S 118 37 48.81E	28	S92	NIL	NIL
H3	20 22 41.85S 118 37 48.41E	28	S92	NIL	NIL
H4	20 22 40.90S 118 37 47.87E	27	AS55/B06	NIL	NIL
H5	20 22 40.05S 118 37 47.92E	27	AS55/B06	NIL	NIL
H6	20 22 40.50S 118 37 48.45E	28	AS55/B06	NIL	NIL

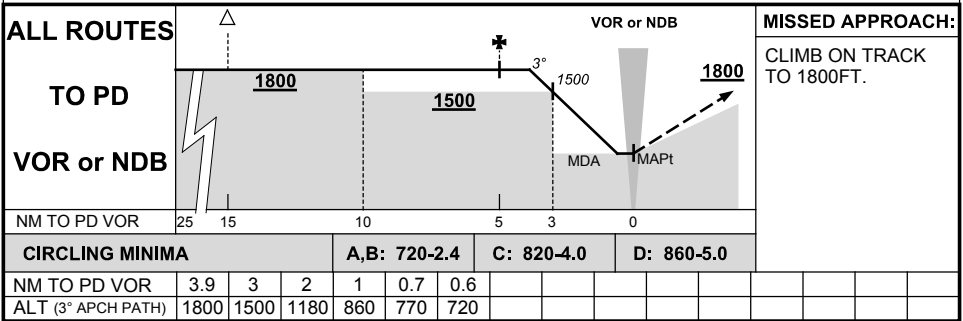
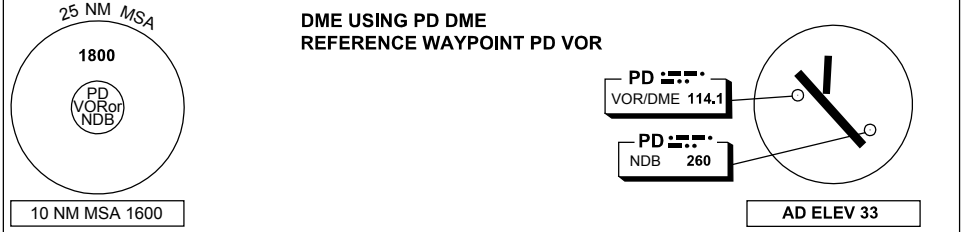
Changes: REMOVED H1/H1A, ADDED 10.

PPDAP02-176

## DME or GNSS ARRIVAL PROCEDURES PORT HEDLAND, WA (YPPD)

28 FEB 2019

AWIS (H24) 133.2	ATIS (AFIS HR) 133.65	AFIS 119.9	FIA (AH) ML CEN 118.6	CTAF+AFRU (AH) 119.9	AFRU+PAL (AH) 119.9	Bearings are Magnetic Elevations in FEET AMSL
---------------------	--------------------------	---------------	--------------------------	-------------------------	------------------------	--

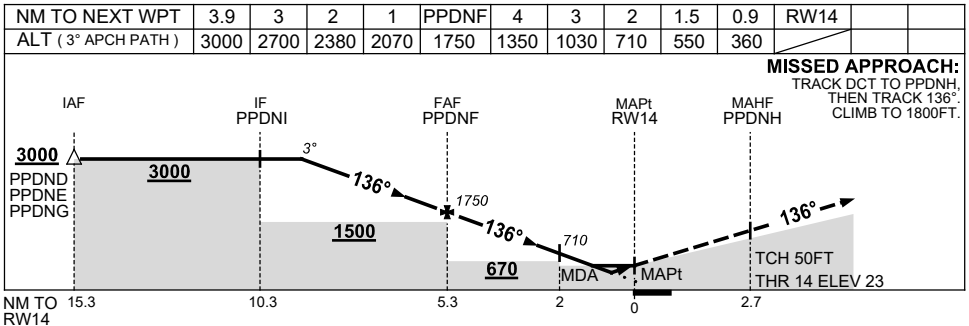
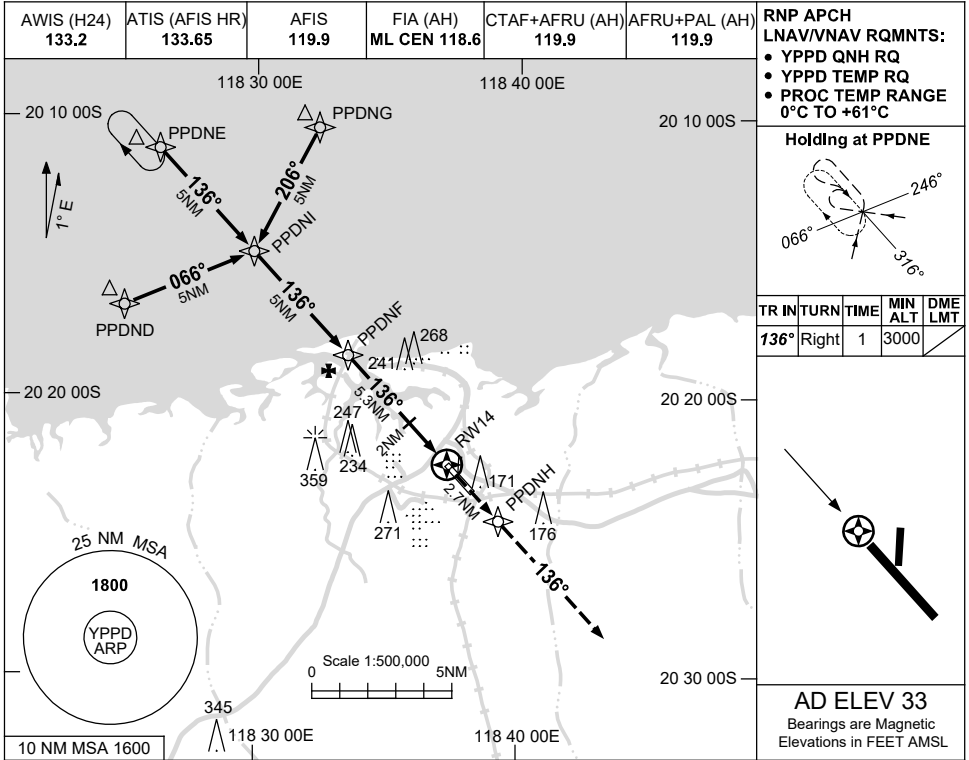


USE QNH

RNP RWY 14

30 NOV 2023

PORT HEDLAND, WA (YPPD)



**NOTES**

1. MAX IAS:  
INITIAL : 210KT.

CATEGORY	A	B	C	D
LNAV/VNAV	<b>360 (337-1.9)</b>			
LNAV	<b>550 (527-3.0)</b>			
CIRCLING	<b>720 (687-4.4)</b>		<b>820 (787-4.0)</b>	
ALTERNATE	(1187-4.4)		(1287-6.0)	
			(1327-7.0)	

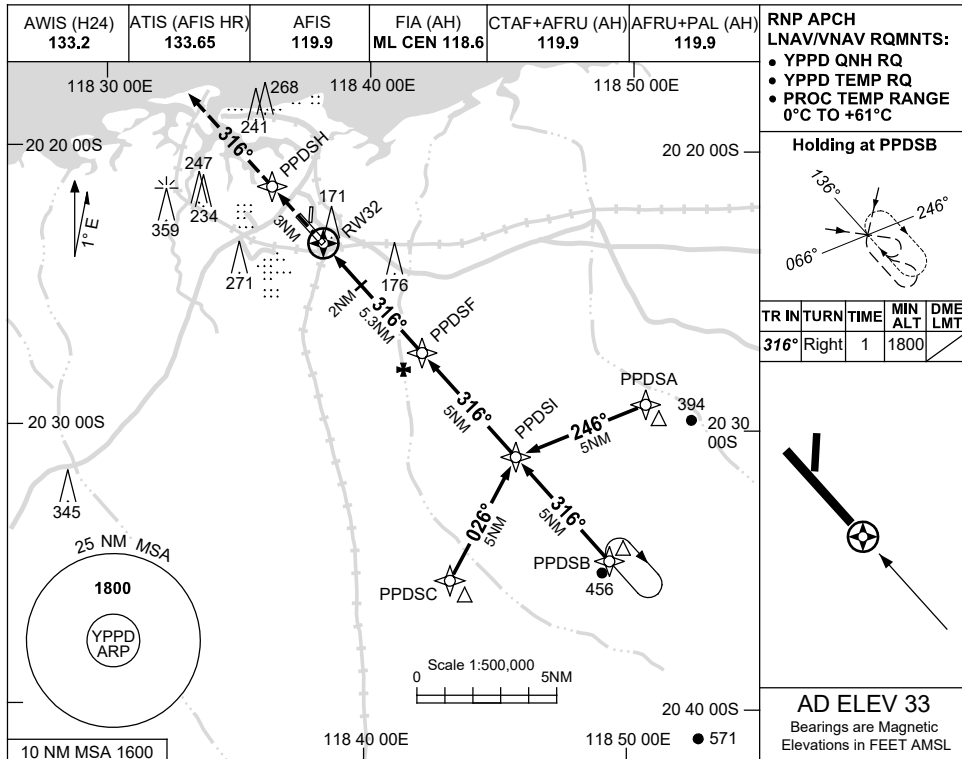
Changes: CHART TITLE, PBN SPECIFICATION BOX, Editorial. PPDGN01-177

USE QNH

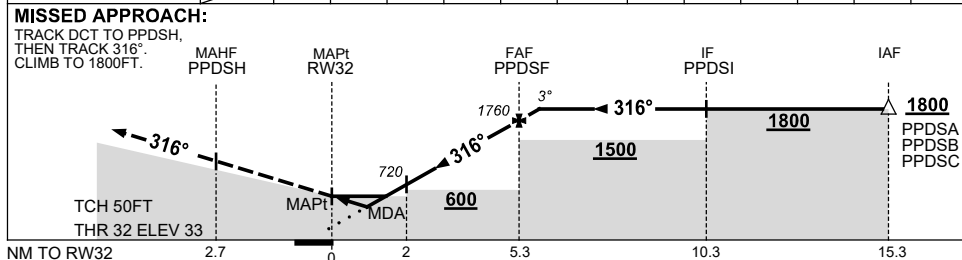
RNP RWY 32

30 NOV 2023

PORT HEDLAND, WA (YPPD)



NM TO NEXT WPT	RW32	0.9	1.5	2	3	4	PPDSF	0.1				
ALT (3° APCH PATH)		360	560	720	1040	1360	1760	1800				



**NOTES**

CATEGORY	A	B	C	D
LNAV/VNAV	<b>360 (327-1.8)</b>			
LNAV	<b>560 (527-3.0)</b>			
CIRCLING	<b>720 (687-2.4)</b>		<b>820 (787-4.0)</b>	
ALTERNATE	<b>(1187-4.4)</b>		<b>(1287-6.0)</b>	
	<b>(1327-7.0)</b>			

1. MAX IAS:  
INITIAL : 210KT.

Changes: CHART TITLE, PBN SPECIFICATION BOX, Editorial.

PPDGN02-177

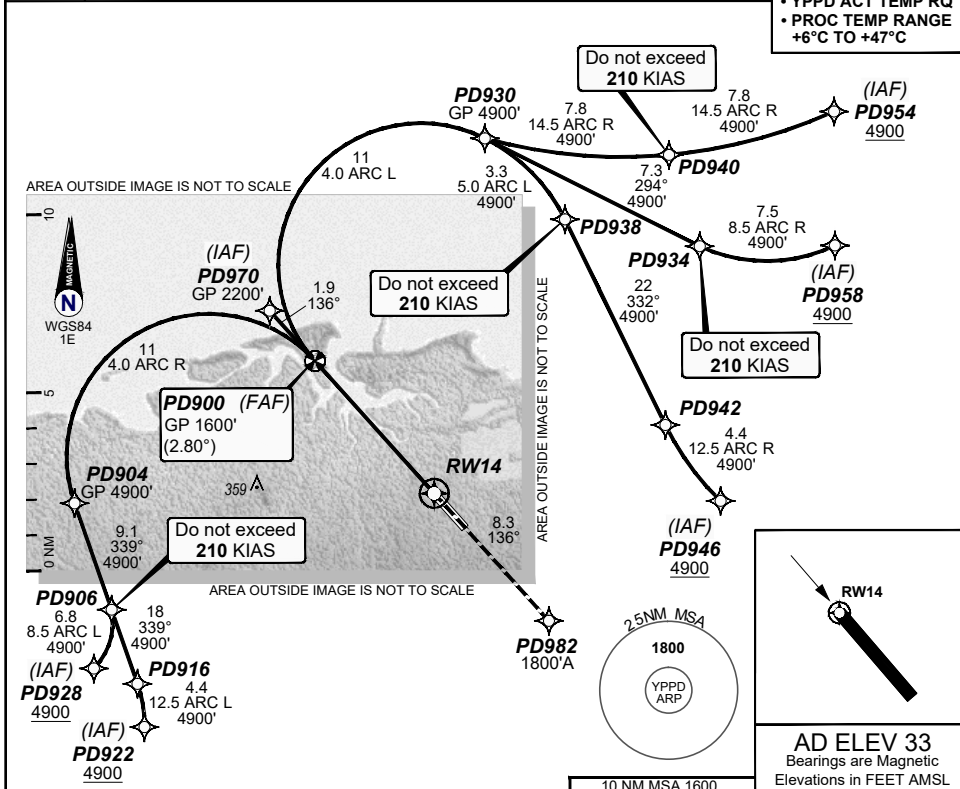
**FOR CASA APPROVED  
OPERATORS ONLY**

RNP U RWY 14 (AR)

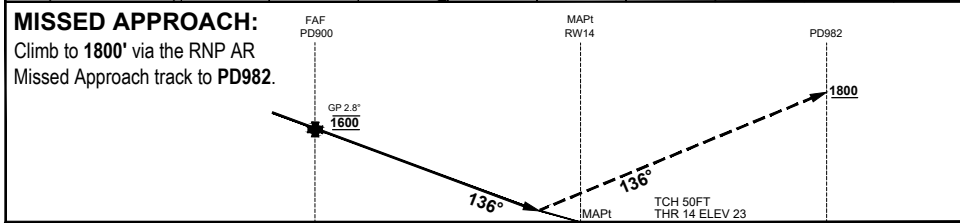
**30 NOV 2023**

**USE QNH PORT HEDLAND, WA (YPPD)**

AWIS (H24)	ATIS (AFIS HR)	AFIS	FIA (AH)	CTAF+AFRU (AH)	AFRU+PAL (AH)	RNP U 14		<b>RNP AR APCH</b> • RF RQ • YPPD ACT QNH RQ • YPPD ACT TEMP RQ • PROC TEMP RANGE +6°C TO +47°C
133.2	133.65	119.9	ML CEN 118.6	119.9	119.9	THR ELEV 23		



	PD900	0.9	RW14					
<b>ALT (2.8° APCH PATH)</b>	1600	327						



**NOTES**  
1. APCH PATH DOES NOT COINCIDE WITH PAPI 3° GLIDE PATH.

CATEGORY	A	B	C	D
RNP (0.30)			DA(H) 327 (304 - 1.6)	
CIRCLING	N/A		NOT AUTHORISED	
ALTERNATE				

202308030857 COPYRIGHT © GE DIGITAL, 2023. ALL RIGHTS RESERVED. GE PROPRIETARY INFORMATION  
Changes: EDITORIAL, RNAV (RNP) TO RNP AR, RNP AR NOTES, PAPI NOTE PDGNG03-177

**DO NOT USE FOR NAVIGATION**  
Prepared by GE Aviation

© Airservices Australia

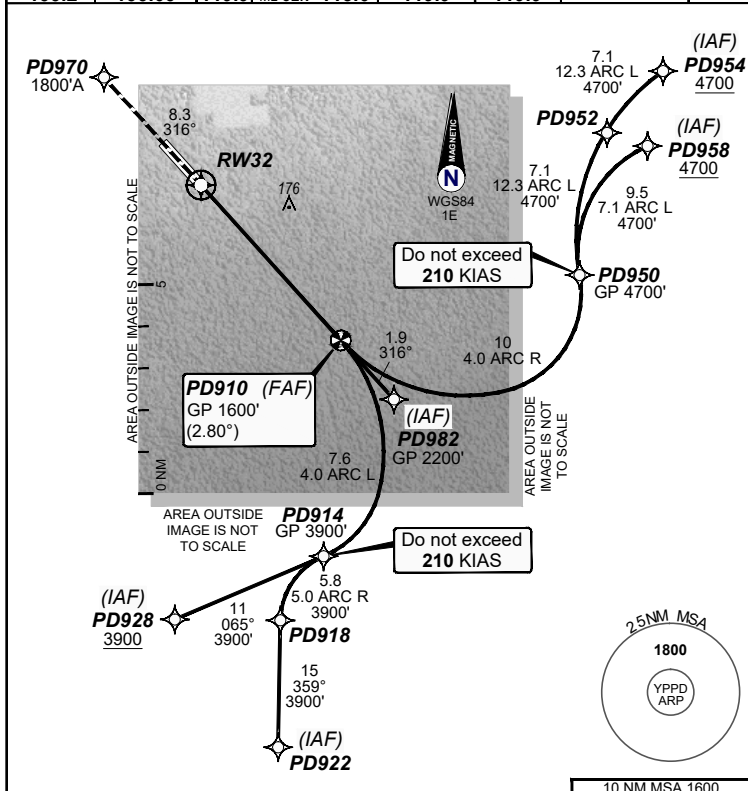


**FOR CASA APPROVED  
OPERATORS ONLY  
USE QNH**

**RNP U RWY 32 (AR)  
PORT HEDLAND, WA (YPPD)**

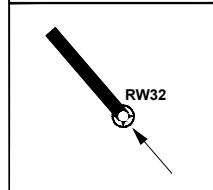
**30 NOV 2023**

AWIS (H24) <b>133.2</b>	ATIS (AFIS HR) <b>133.65</b>	AFIS <b>119.9</b>	FIA (AH) ML CEN <b>118.6</b>	CTAF+AFRU (AH) <b>119.9</b>	AFRU+PAL (AH) <b>119.9</b>	RNV U 32 THR ELEV 33	RNP AR APCH • RF RQ • YPPD ACT QNH RQ • YPPD ACT TEMP RQ • PROC TEMP RANGE +6°C TO +47°C
----------------------------	---------------------------------	----------------------	---------------------------------	--------------------------------	-------------------------------	-------------------------	---



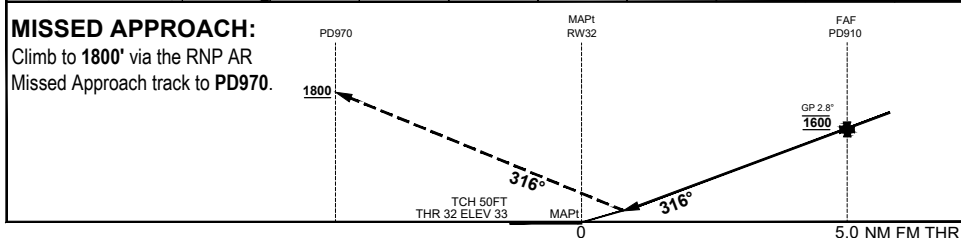
TR	IN	TURN	TIME	MIN	DME
				ALT	LMT

--	--	--	--	--	--



**AD ELEV 33**  
Bearings are Magnetic  
Elevations in FEET AMSL

	RW32	0.9	PD910					
<b>ALT (2.8° APCH PATH)</b>		341	1600					



**NOTES**  
1. APCH PATH DOES NOT COINCIDE WITH PAPI 3° GLIDE PATH.

CATEGORY	A	B	C	D
RNP (0.30)			DA(H) 341 (308 - 1.7)	
CIRCLING	N/A		NOT AUTHORISED	
ALTERNATE				

**DO NOT USE FOR NAVIGATION**  
Prepared by GE Aviation



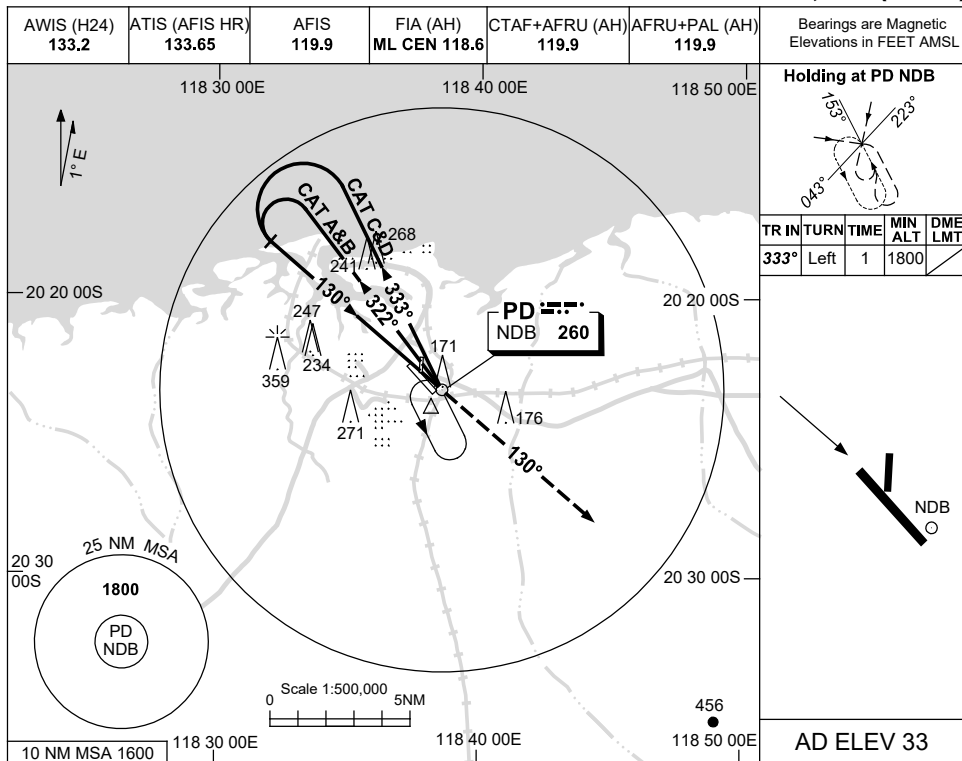


USE QNH

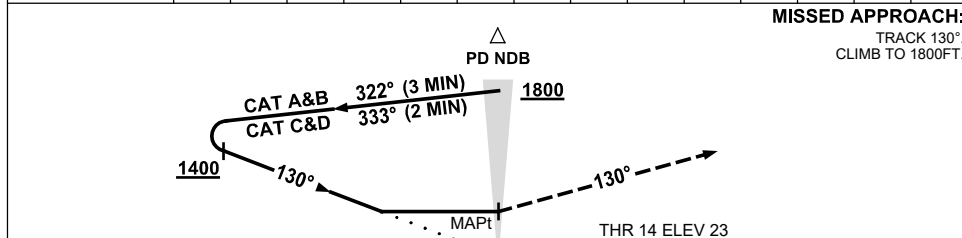
NDB RWY 14

21 MAY 2020

PORT HEDLAND, WA (YPPD)



DME DIST									
ALT			NOT APPLICABLE						



**NOTES**

CATEGORY	A	B	C	D
S-I NDB	<b>720 (697-4.0)</b>			
CIRCLING	<b>720 (687-2.4)</b>	<b>820 (787-4.0)</b>	<b>860 (827-5.0)</b>	
ALTERNATE	(1187-4.4)	(1287-6.0)	(1327-7.0)	

1. MAX IAS:  
INITIAL : 210KT.

Changes: COORD FMT, Editorial.

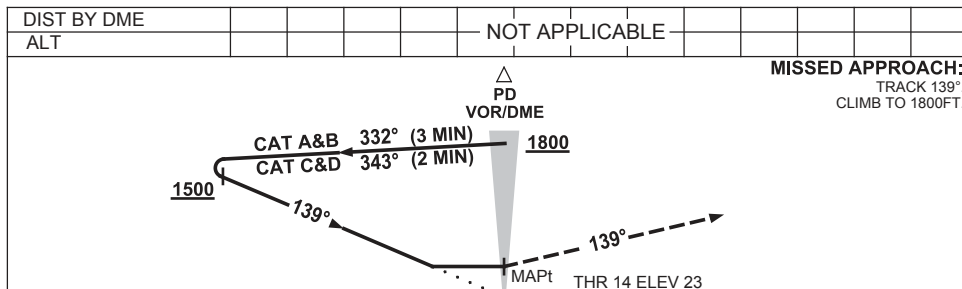
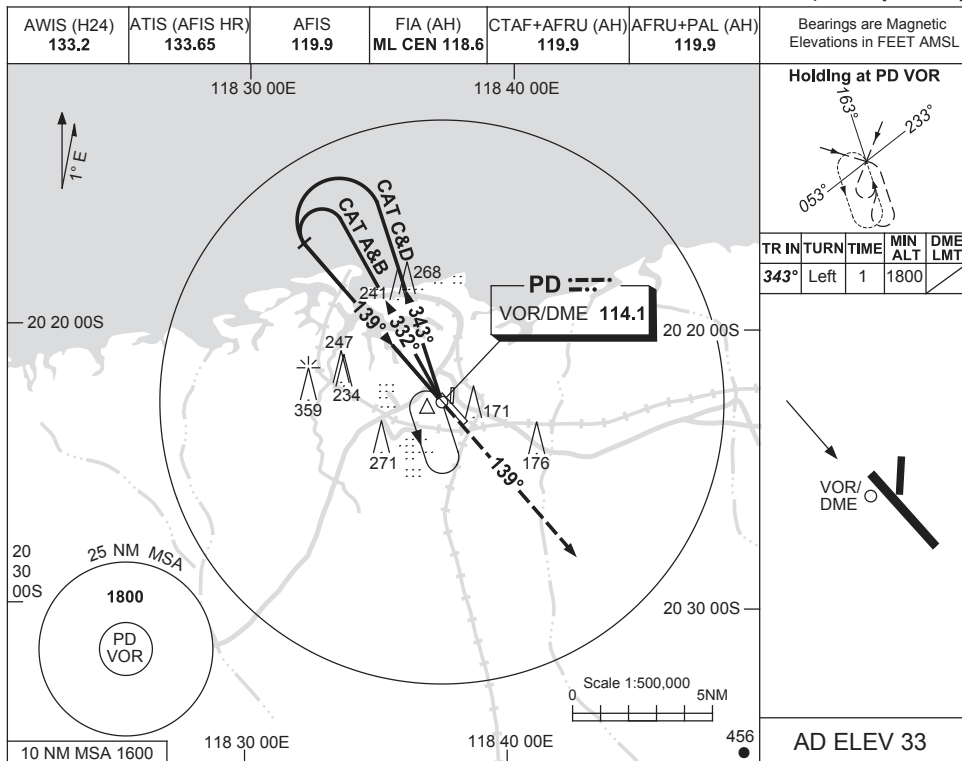
PPDNB01-163

USE QNH

VOR-Y RWY 14

15 AUG 2019

PORT HEDLAND, WA (YPPD)



NM TO PD DME

CATEGORY	A	B	C	D
S-I VOR	<b>720 (697-4.0)</b>			
CIRCLING	<b>720 (687-2.4)</b>	<b>820 (787-4.0)</b>	<b>860 (827-5.0)</b>	
ALTERNATE	(1187-4.4)	(1287-6.0)	(1327-7.0)	

- NOTES**
- MAX IAS:  
HOLDING: 210KT.  
INITIAL : 210KT.

Changes: COORD FORMAT, Editorial.

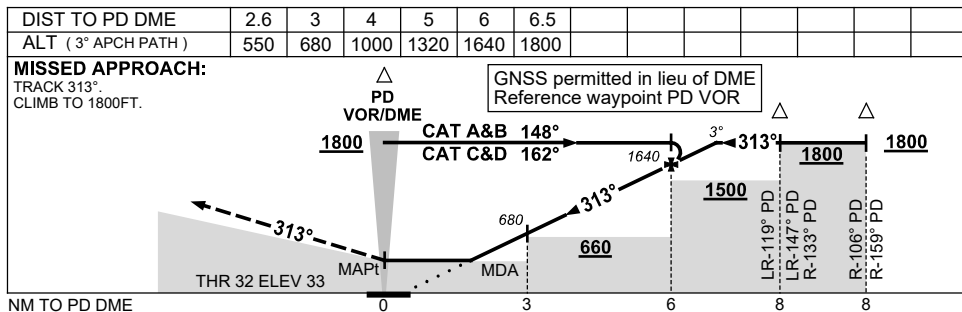
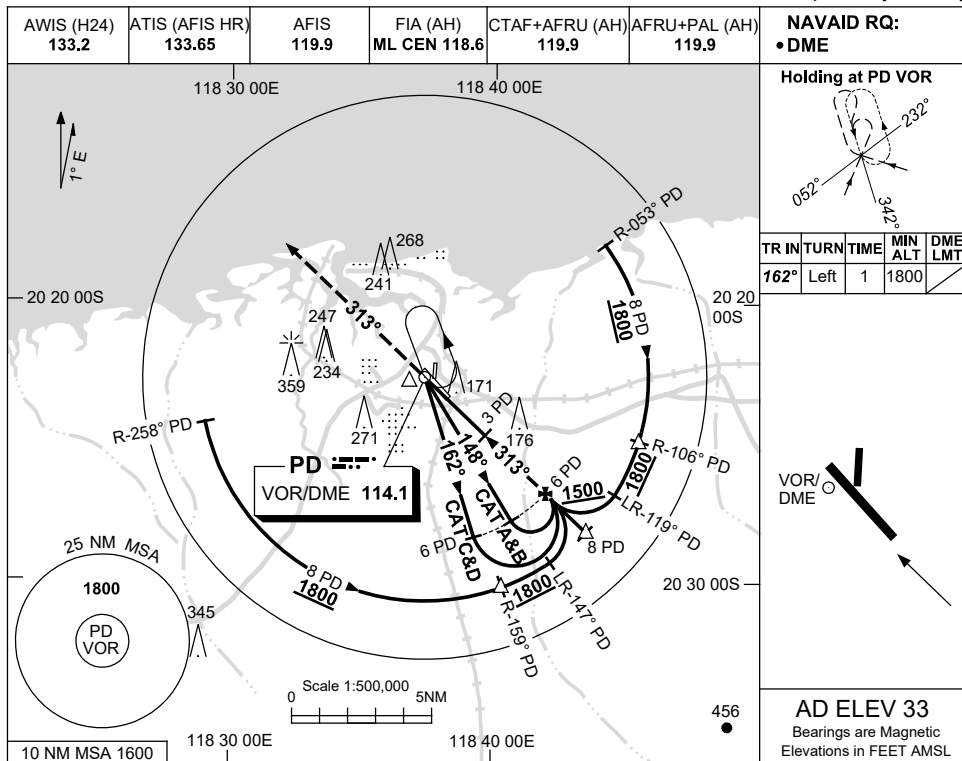
PPDVO01-160

USE QNH

VOR RWY 32

21 MAY 2020

PORT HEDLAND, WA (YPPD)



**NOTES**

CATEGORY	A	B	C	D
S-I VOR/DME	550 (517-2.9)			
CIRCLING	720 (687-2.4)	820 (787-4.0)	860 (827-5.0)	
ALTERNATE	(1187-4.4)	(1287-6.0)	(1327-7.0)	

1. MAX IAS:  
INITIAL : 210KT.

Changes: COORD FMT, Editorial.

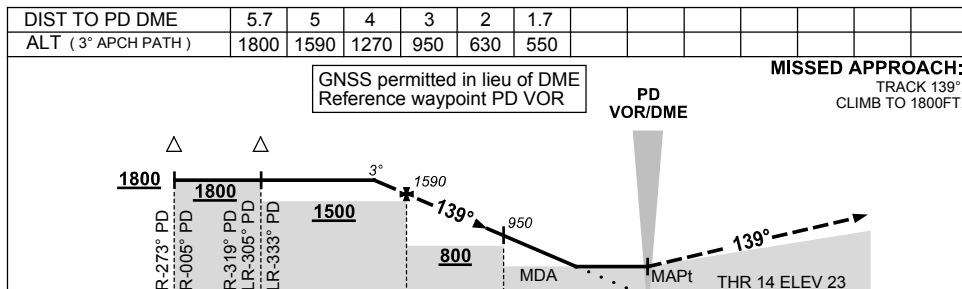
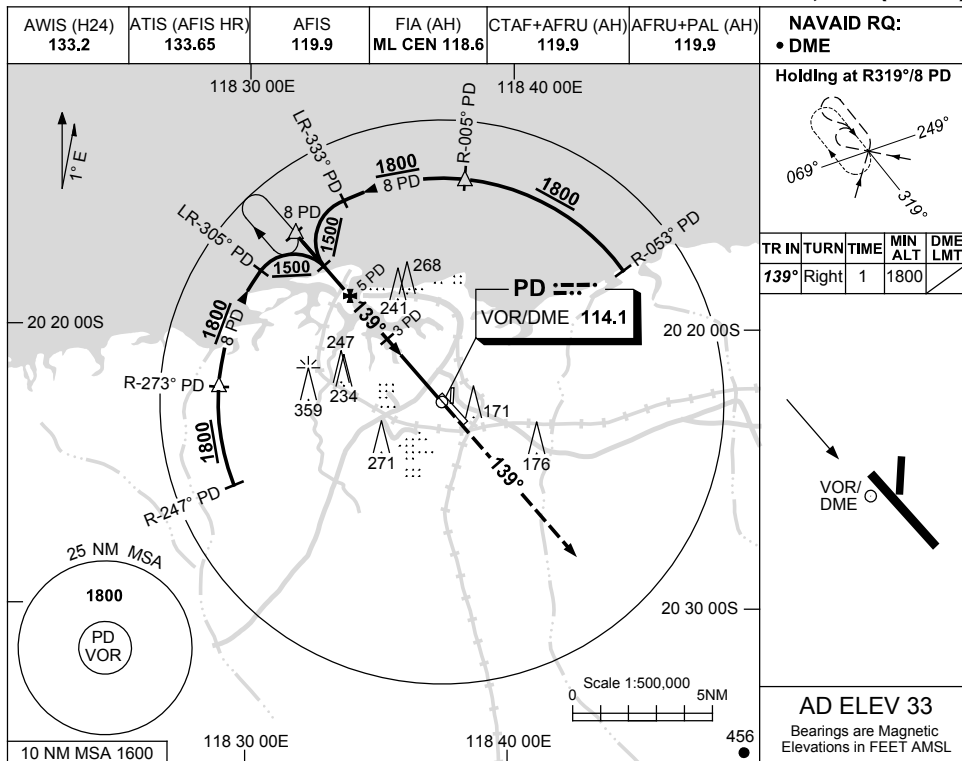
PPDVO02-163

USE QNH

VOR-Z RWY 14

15 AUG 2019

PORT HEDLAND, WA (YPPD)



CATEGORY	A	B	C	D
S-I VOR/DME	<b>550 (527-3.0)</b>			
CIRCLING	<b>720 (687-2.4)</b>	<b>820 (787-4.0)</b>	<b>860 (827-5.0)</b>	
ALTERNATE	(1187-4.4)	(1287-6.0)	(1327-7.0)	

**NOTES**  
1. MAX IAS:  
INITIAL : 210KT.

Changes: COORD FORMAT, SCALE DEPICTION, Editorial.

PPDVO03-160