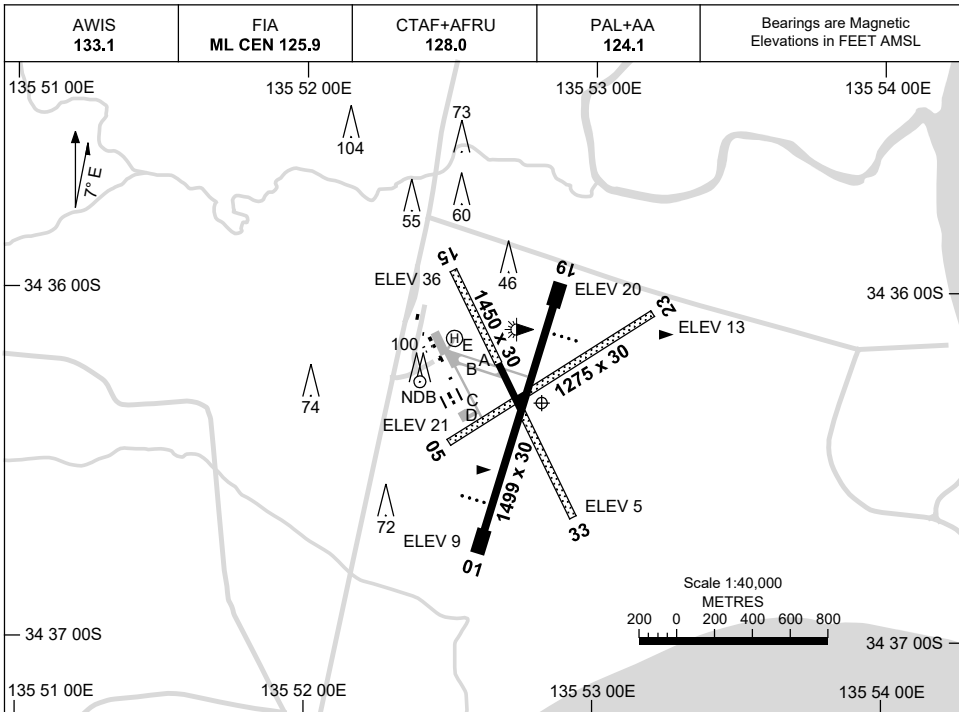


8 SEP 2022

AD ELEV 36
34 36 19S 135 52 49E

AERODROME CHART
PORT LINCOLN, SA (YPLC)



| RWY | | AERODROME LIGHTING | |
|--------------------------|----------------|--|--|
| | | TAXIWAY : BLUE EDGE ON TWY A, B AND E RL : PAL+AA 124.1 , SDBY (15 SEC) | |
| 01 | ⁰¹⁰ | PAPI 3.0° 45FT LIRL | |
| ¹⁹⁰ 19 | | PAPI 3.0° 45FT LIRL | |
| 05 | ⁰⁵¹ | NIL | |
| ²³¹ 23 | | NIL | |
| 15 | ¹⁴⁷ | LIRL | |
| ³²⁷ 33 | | LIRL | |

NOTES

Changes: TWY D AND E ADDED, TWY LIGHTING, HLS, COORD FORMAT, NOTES.

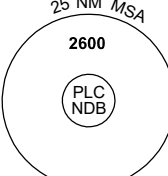
PLCAD01-172

GNSS ARRIVAL PROCEDURES PORT LINCOLN, SA (YPLC)

16 JUN 2022

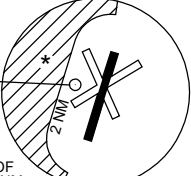
| | | | | |
|---------------|---------------------|--------------------|-----------------|--|
| AWIS 133.1 | FIA ML CEN 125.9 | CTAF+AFRU 128.0 | PAL+AA 124.1 | Bearings are Magnetic Elevations in FEET AMSL |
|---------------|---------------------|--------------------|-----------------|--|

25 NM MSA



10 NM MSA 2600

REFERENCE WAYPOINT PLC NDB

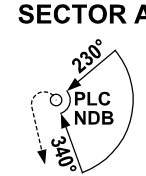


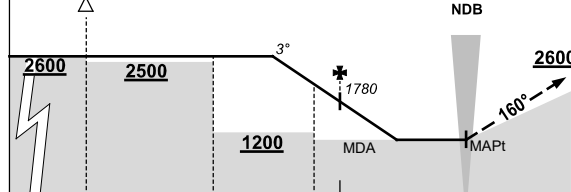
PLC NDB: 389

* NO CIRCLING WEST OF RWY 01/19 BEYOND 2NM.

AD ELEV 36

SECTOR A

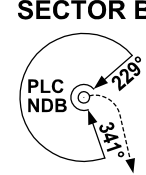


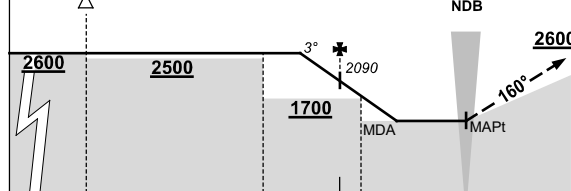


MISSED APPROACH:
TRACK 160°. CLIMB TO 2600FT.

| | | | | | | | | | | | | | | |
|------------------------|---------------|------|-------------|------|--------|------|------|--|--|--|--|--|--|--|
| NM TO PLC NDB | 25 | 15 | 10 | 6 | 5 | 0 | | | | | | | | |
| CIRCLING MINIMA | A,B: 1040-2.4 | | C: 1210-4.0 | | D: N/A | | | | | | | | | |
| NM TO PLC NDB | 7.6 | 7 | 6 | 5 | 4 | 3 | 2.7 | | | | | | | |
| ALT (3° APCH PATH) | 2600 | 2420 | 2100 | 1780 | 1460 | 1140 | 1040 | | | | | | | |

SECTOR B





MISSED APPROACH:
TRACK 160°. CLIMB TO 2600FT.

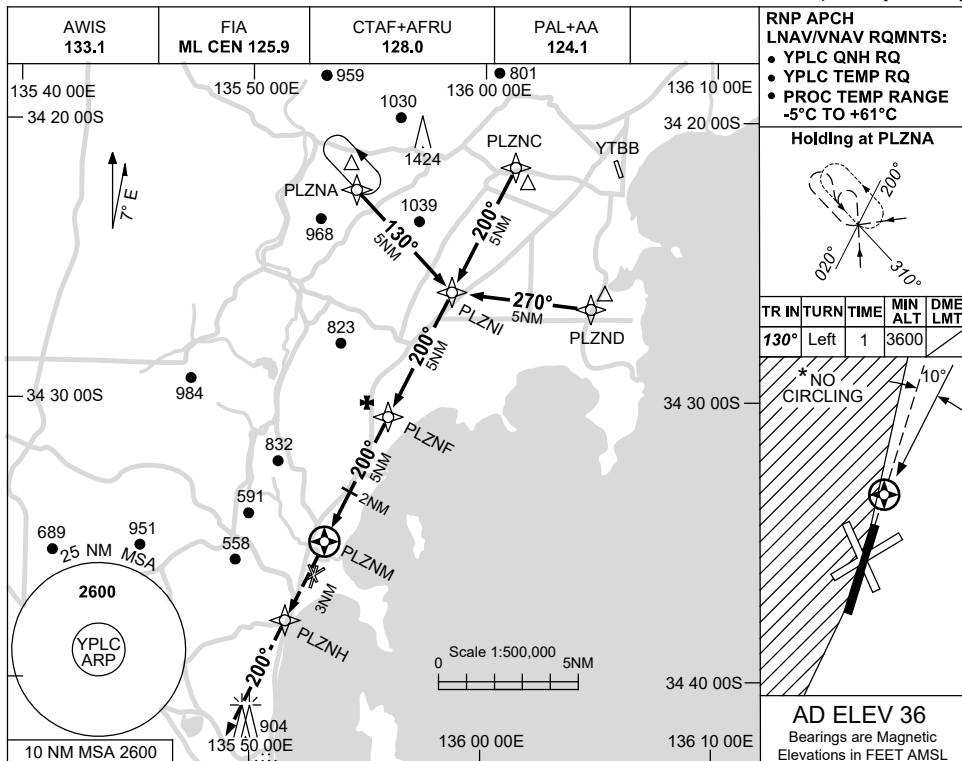
| | | | | | | | | | | | | | | |
|------------------------|---------------|------|-------------|------|--------|------|--|--|--|--|--|--|--|--|
| NM TO PLC NDB | 25 | 15 | 8 | 5 | 4 | 0 | | | | | | | | |
| CIRCLING MINIMA | A,B: 1370-2.4 | | C: 1370-4.0 | | D: N/A | | | | | | | | | |
| NM TO PLC NDB | 6.6 | 6 | 5 | 4 | 3 | 2.8 | | | | | | | | |
| ALT (3° APCH PATH) | 2600 | 2410 | 2090 | 1770 | 1450 | 1370 | | | | | | | | |

USE QNH

RNP RWY 19

PORT LINCOLN, SA (YPLC)

1 DEC 2022



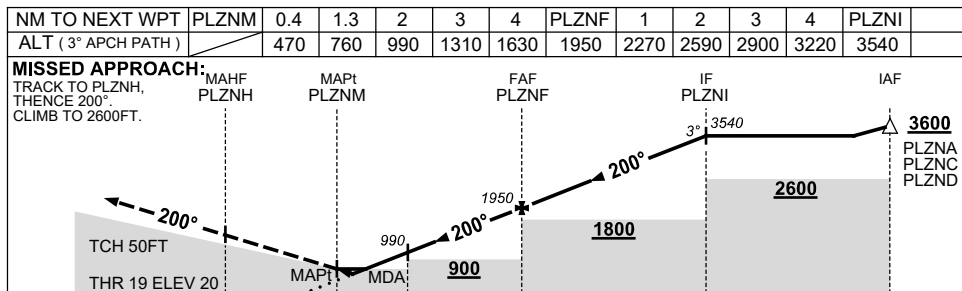
RNP APCH LNAV/VNAV RQMNTS:

- YPLC QNH RQ
- YPLC TEMP RQ
- PROC TEMP RANGE -5°C TO +61°C

Holding at PLZNA

| TR IN | TURN | TIME | MIN ALT | DME LMT |
|-------|------|------|---------|---------|
| 130° | Left | 1 | 3600 | |

AD ELEV 36
Bearings are Magnetic Elevations in FEET AMSL



NOTES

| CATEGORY | A | B | C | D |
|-----------|-----------------|-----------------|---|----------------|
| LNAV/VNAV | | 470 (450-2.5) | | NOT APPLICABLE |
| LNAV | | 760 (740-4.2) | | |
| CIRCLING* | 1040 (1004-2.4) | 1210 (1174-4.0) | | |
| ALTERNATE | (1504-4.4) | (1674-6.0) | | |

- MAX IAS:
HOLDING: 210KT.
INITIAL : 210KT.
- NO CIRCLING WEST OF RWY 01/19.
- HOLDING AND INITIAL OVER-LIES TUMBY BAY RNP PROC.

Changes: CHART TITLE, PBN SPECIFICATION BOX.

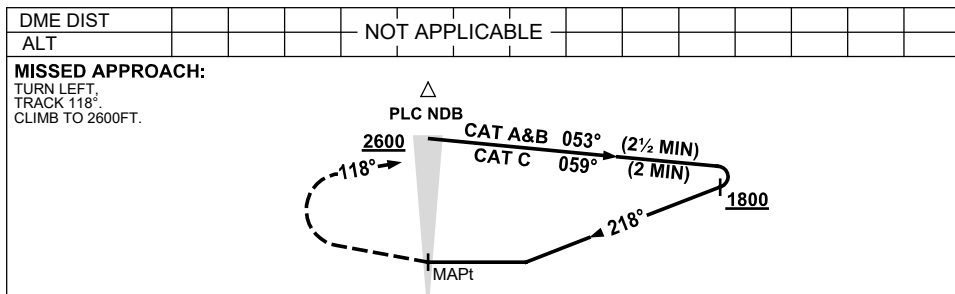
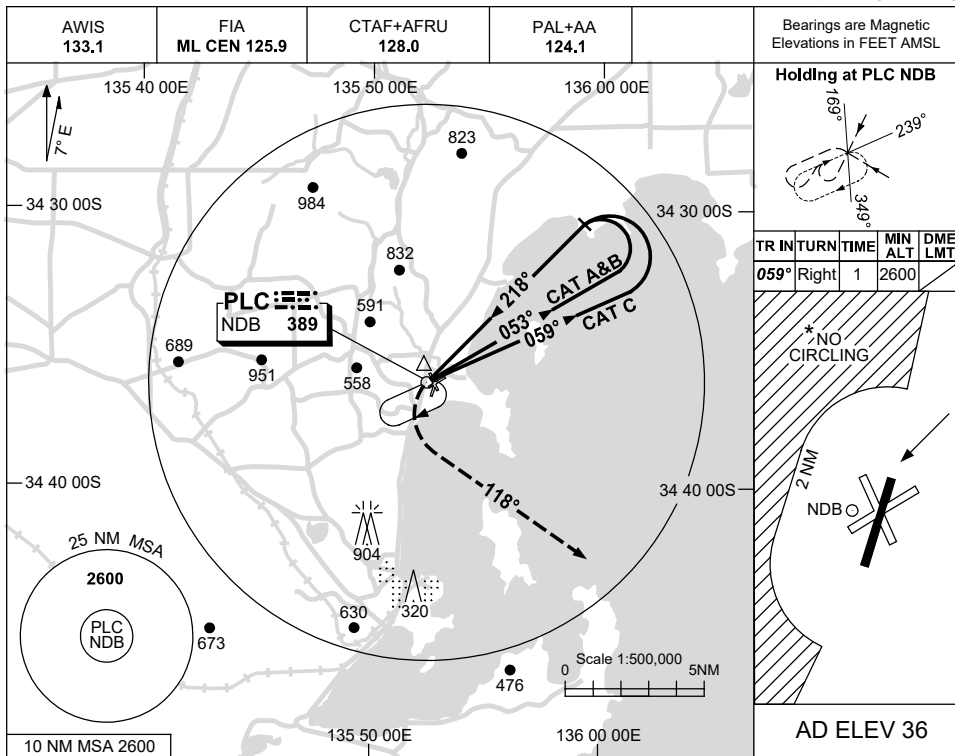
PLCGN01-173

USE QNH

NDB-A

16 JUN 2022

PORT LINCOLN, SA (YPLC)



NOTES

| CATEGORY | A | B | C | D |
|------------|-----------------|---|-----------------|----------------|
| | | | | NOT APPLICABLE |
| CIRCLING * | 1040 (1004-2.4) | | 1210 (1174-4.0) | |
| ALTERNATE | (1504-4.4) | | (1674-6.0) | |

1. MAX IAS:
INITIAL :
CAT C 180KT.
- *2. NO CIRCLING WEST OF RWY 01/19 BEYOND 2NM.

Changes: PAL+AA.

PLCNB01-171