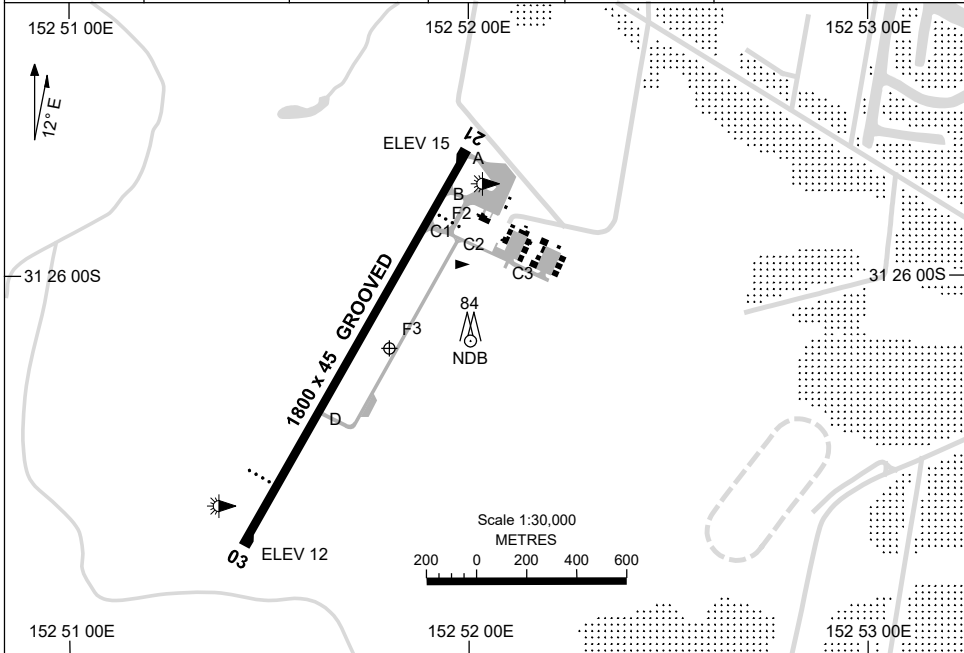


7 SEP 2023

AD ELEV 15  
31 26 09S 152 51 48E

AERODROME CHART  
**PORT MACQUARIE, NSW (YPMQ)**

AWIS 128.45	FIA BN CEN 120.55	CTAF+AFRU 118.1	PAL 122.3		Bearings are Magnetic Elevations in FEET AMSL
----------------	----------------------	--------------------	--------------	--	--



	<b>AERODROME LIGHTING</b>	
<b>RWY</b>	TAXIWAY : BLUE EDGE TWY A, B, C1, F2 RL : PAL 122.3 , SDBY (15 SEC)	
<b>03</b> <small>017</small>	PAPI 3.0° 54FT LIRL	
<small>197</small> <b>21</b>	PAPI 3.0° 54FT LIRL	

**NOTES**

1. FIA FREQ 120.55 AVBL IN CIRCUIT AREA.  
FOR ON GROUND COM CONTACT BN CEN 126.6

Changes: NEW TWY, RELOCATE UNLIT WI, HELIPAD REMOVED, Editorial.

PMQAD01-176

# GNSS ARRIVAL PROCEDURES PORT MACQUARIE, NSW (YPMQ)

8 NOV 2018

AWIS 128.45	FIA BN CEN 120.55	CTAF+AFRU 118.1	PAL 122.3		Bearings are Magnetic Elevations in FEET AMSL
----------------	----------------------	--------------------	--------------	--	--

**REFERENCE WAYPOINT PMQ NDB**

10 NM MSA 3000
AD ELEV 15

**SECTOR A**

**MISSED APPROACH:**

TURN AS APPROPRIATE,  
TRACK 145°.  
CLIMB TO 2000FT.

NM TO NDB	25	16	15	12	7	5	3	0								
<b>CIRCLING MINIMA</b>	A,B: 930-2.4			C: 1030-4.0			D: N/A									
NM TO NDB	16	14	12	10	9	8	7	6	5	4	3	2.6	2.3			
ALT (3° APCH PATH)	5300	4660	4030	3390	3070	2750	2440	2120	1800	1480	1160	1030	930			

**SECTOR B**

**MISSED APPROACH:**

TURN AS APPROPRIATE,  
TRACK 045°.  
CLIMB TO 2000FT.

NM TO NDB	25	19	15	10	8	6	5	2	0							
<b>CIRCLING MINIMA</b>	A,B: 800-2.4			C: 1030-4.0			D: N/A									
NM TO NDB	14.6	13	11	9	8	7	6	5	4	3	2	1.2	1	0.4		
ALT (3° APCH PATH)	5300	4800	4160	3530	3210	2890	2570	2250	1940	1620	1300	1030	980	800		

**SECTOR C**

**MISSED APPROACH:**

TURN AS APPROPRIATE,  
TRACK 140°.  
CLIMB TO 2000FT.

NM TO NDB	25	19	16	15	8	7	5	4	3	2						
<b>CIRCLING MINIMA</b>	A,B: 790-2.4			C: 1030-4.0			D: N/A									
NM TO NDB	15.2	14	12	10	8	7	6	5	4	3	2	1.8	1.1			
ALT (3° APCH PATH)	5300	4910	4270	3640	3000	2680	2370	2050	1730	1410	1090	1030	790			

Changes: Editorial.

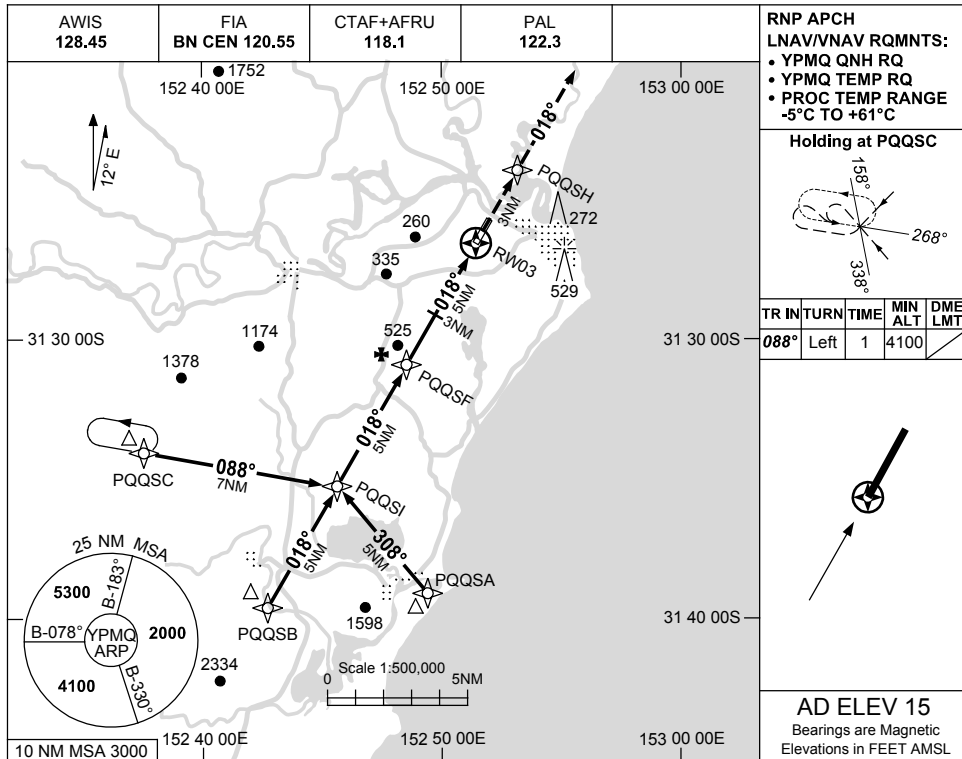
PMQDG01-157

USE QNH

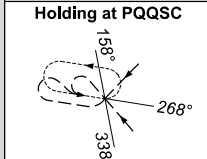
RNP RWY 03

30 NOV 2023

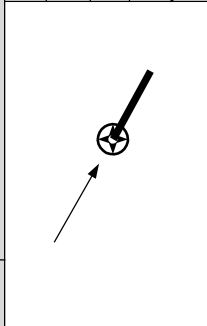
PORT MACQUARIE, NSW (YPMQ)



RNP APCH  
LNAV/VNAV RQMNTS:  
• YPMQ QNH RQ  
• YPMQ TEMP RQ  
• PROC TEMP RANGE  
-5°C TO +61°C

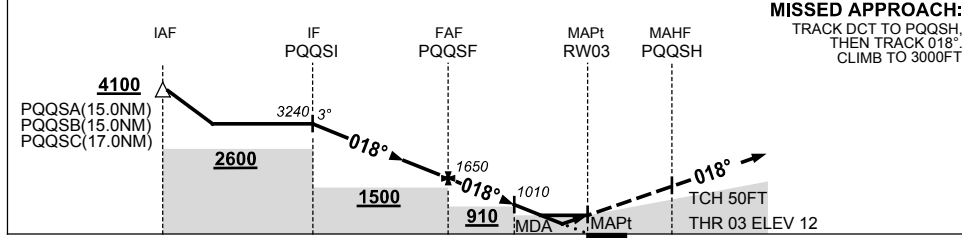


TR	IN	TURN	TIME	MIN ALT	DME LMT
088°	Left	1	4100		



AD ELEV 15  
Bearings are Magnetic  
Elevations in FEET AMSL

NM TO NEXT WPT	PQQSI	4	3	2	1	PQQSF	4	3	2	1.9	1.3	RWY03
ALT (3° APCH PATH)	3240	2920	2600	2290	1970	1650	1330	1010	700	680	480	



**MISSED APPROACH:**  
TRACK DCT TO PQQSH,  
THEN TRACK 018°,  
CLIMB TO 3000FT

NM TO RWY03: 10, 5, 3, 0, 3

**NOTES**

CATEGORY	A	B	C	D
LNAV/VNAV		480 (468-2.6)		NOT APPLICABLE
LNAV		680 (665-3.8)		
CIRCLING	850 (835-2.4)		1030 (1015-4.0)	
ALTERNATE	(1335-4.4)		(1515-6.0)	

1. MAX IAS:  
INITIAL : 210KT.  
**CAUTION:**  
HOLDING PATTERN  
IS OVERLAID BY  
TAREE RNP RWY 22.

Changes: DELETED R574, NEW LOGO, Editorial.

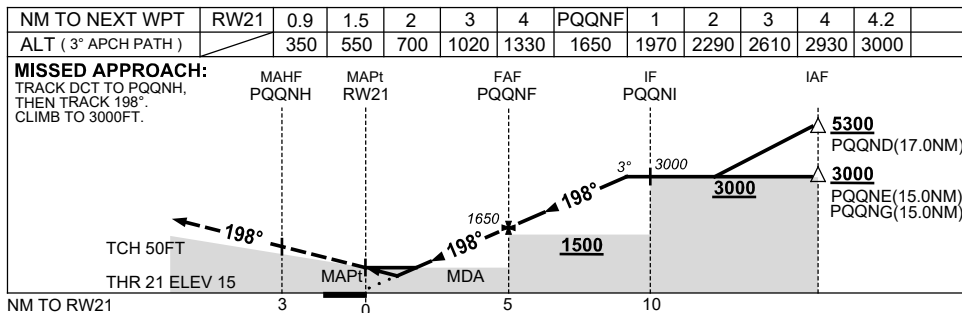
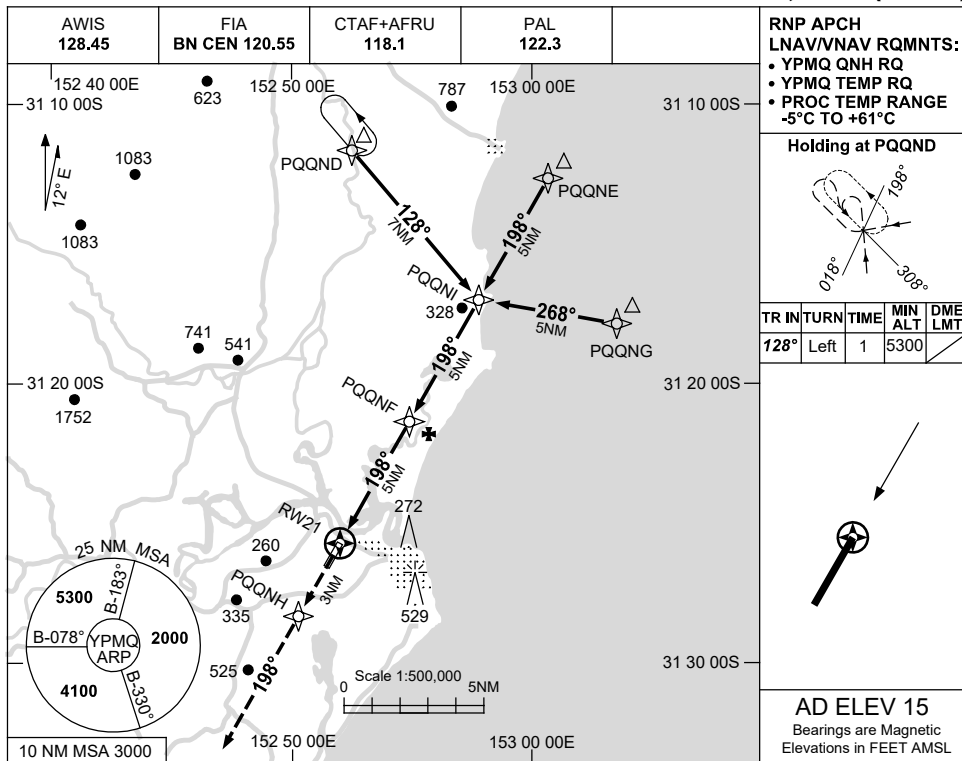
PMQGN01-177

USE QNH

RNP RWY 21

30 NOV 2023

PORT MACQUARIE, NSW (YPMQ)



**NOTES**

CATEGORY	A	B	C	D
LNAV/VNAV	350 (335-1.9)			<b>NOT APPLICABLE</b>
LNAV	550 (535-3.0)			
CIRCLING	850 (835-2.4)		1030 (1015-4.0)	
ALTERNATE	(1335-4.4)		(1515-6.0)	

1. MAX IAS:  
HOLDING: 210KT.  
INITIAL : 210KT.
2. HOLDING PATTERN  
OVERLAYS KEMPSEY  
PROCEDURES.

Changes: DELETED R574, NEW LOGO.

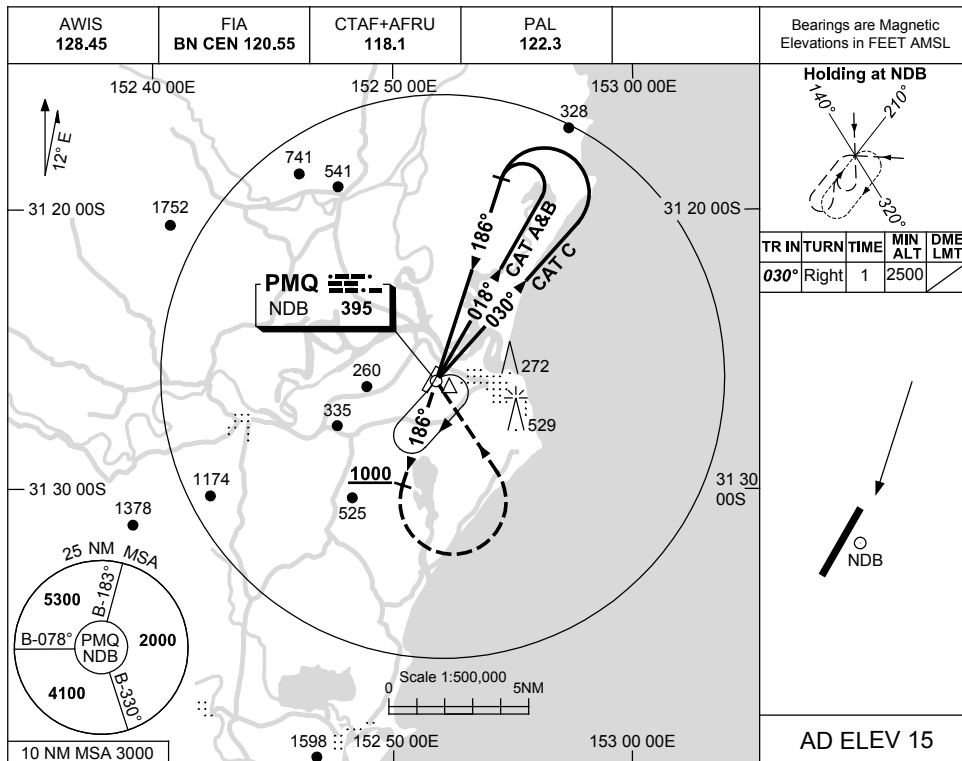
PMQGN02-177

USE QNH

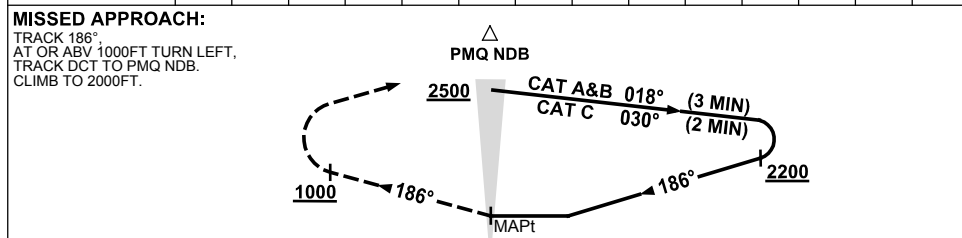
NDB-A

30 NOV 2023

**PORT MACQUARIE, NSW (YPMQ)**



DME DIST	NOT APPLICABLE			
ALT				



**NOTES**

CATEGORY	A	B	C	D
				NOT APPLICABLE
CIRCLING	850 (835-2.4)		1030(1015-4.0)	
ALTERNATE	(1335-4.4)		(1515-6.0)	

1. MAX IAS:  
INITIAL : 210KT.

Changes: DELETED R574, Editorial.

PMQNB01-177