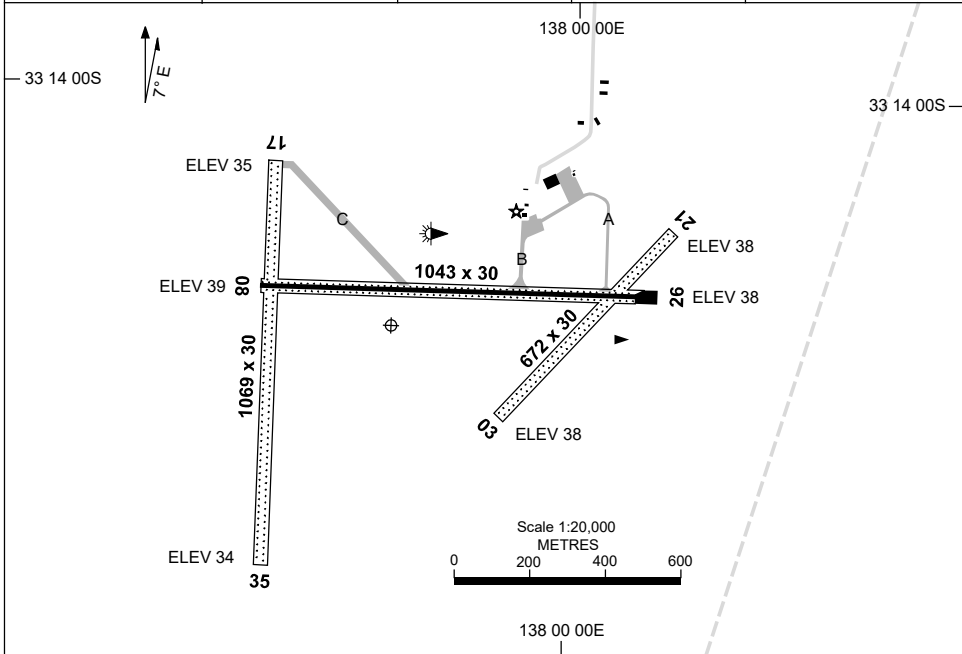


5 SEP 2024

AD ELEV 39
33 14 20S 137 59 42E

AERODROME CHART
PORT PIRIE, SA (YPIR)

FIA ML CEN 123.9	CTAF+AFRU 126.9	AFRU+PAL 126.9	Bearings are Magnetic Elevations in FEET AMSL
---------------------	--------------------	-------------------	--



RWY		AERODROME LIGHTING
		ABN : FLG W 3 SEC TAXIWAY : BLUE EDGE TWY B RL : PAL 126.9 , SDBY (30 MIN PN)
08 263	083 26	LIRL
17 353	173 35	NIL
03 214	034 21	NIL

NOTES

1. TAXIWAY LIGHTING TO MAIN APRON ONLY.

Changes: TWY LIGHTING, TWY, RWY THR ELEV.

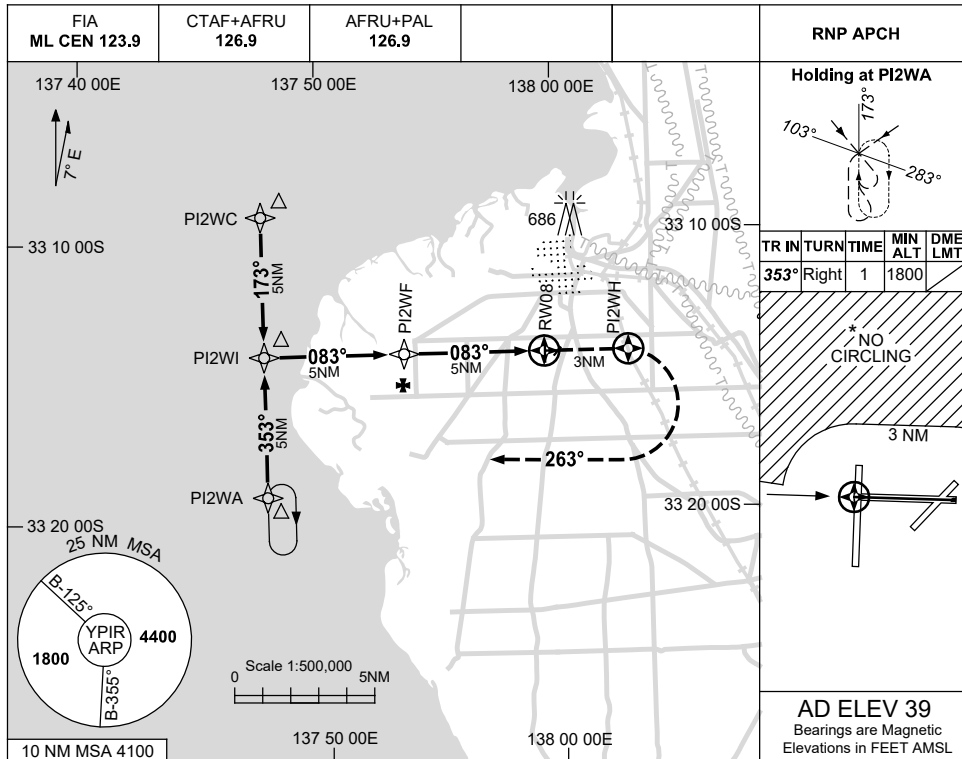
PIRAD01-180

USE QNH

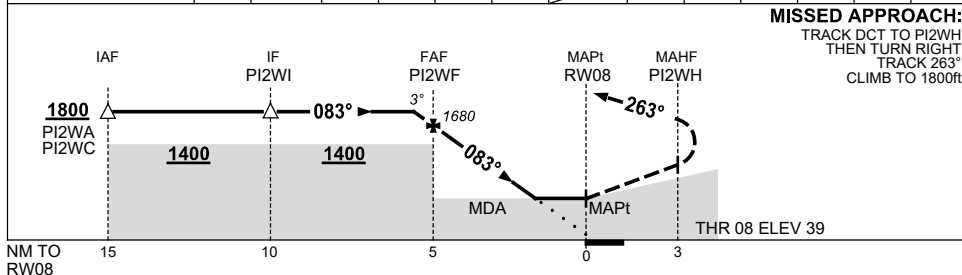
RNP RWY 08

PORT PIRIE, SA (YPIR)

5 SEP 2024



NM TO NEXT WPT	0.4	PI2WF	4	3	2	1.5	RW08				
ALT (3° APCH PATH)	1800	1680	1360	1040	730	550					



MISSED APPROACH:
 TRACK DCT TO PI2WH,
 THEN TURN RIGHT,
 TRACK 263°,
 CLIMB TO 1800ft.

NOTES

CATEGORY	A	B	C	D
LNAV	550 (511-2.9)			NOT APPLICABLE
CIRCLING *	660 (621-2.4)		830 (791-4.0)	
ALTERNATE	(1121-4.4)		(1291-6.0)	

- MAX IAS:
INITIAL : 210KT.
- NO CIRCLING N OF RWY 08 / 26 BEYOND 3NM.

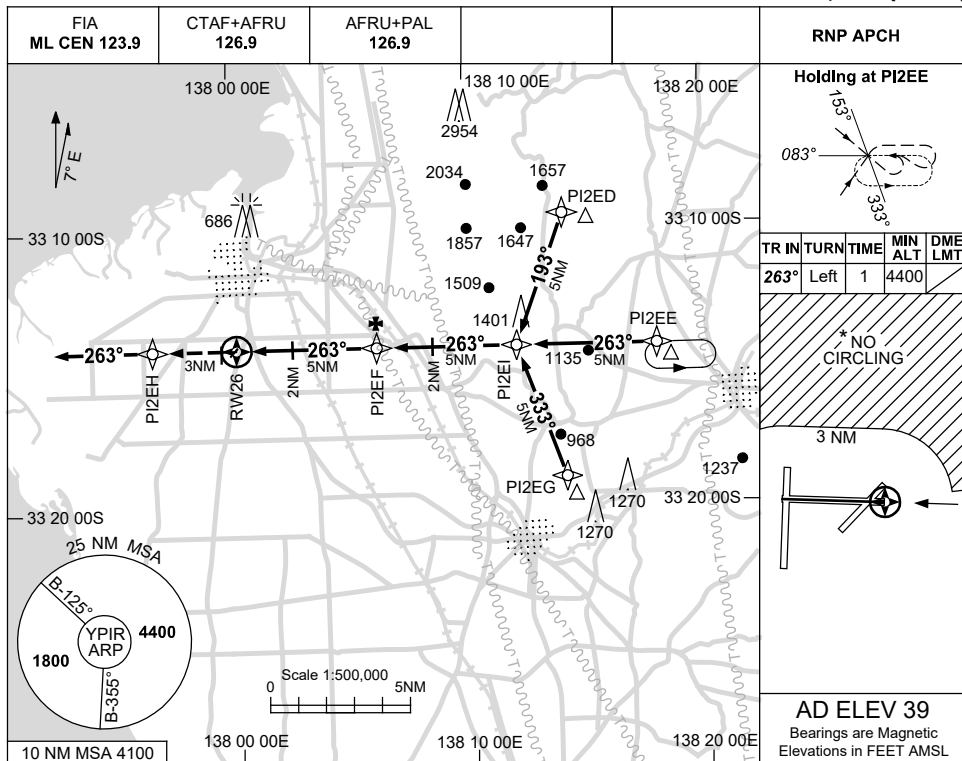
Changes: 10NM MSA, RW08 MAPt, THR ELEV, DIST-ALT TABLE, WPT NAMING CONVENTION, Editorial. PIRGN01-180

USE QNH

RNP RWY 26

PORT PIRIE, SA (YPIR)

5 SEP 2024



Holding at P12EE

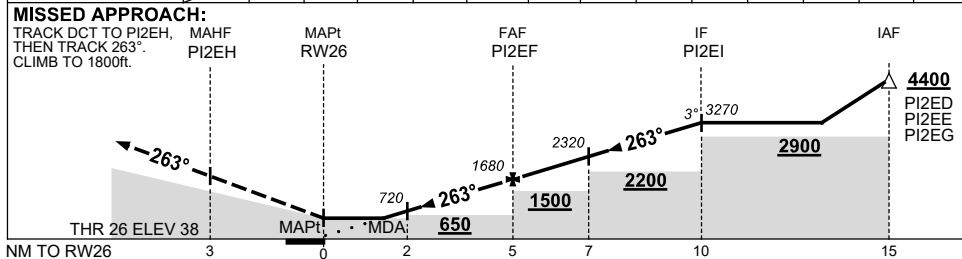
TR	IN	TURN	TIME	MIN ALT	DME LMT
263°		Left	1	4400	

* NO CIRCLING

3 NM

AD ELEV 39
Bearings are Magnetic
Elevations in FEET AMSL

NM TO NEXT WPT	RW26	1.5	2	3	4	P12EF	1	2	3	4	P12EI		
ALT (3° APCH PATH)		550	720	1040	1360	1680	2000	2320	2640	2950	3270		



NOTES

CATEGORY	A	B	C	D
LNAV	550 (511-2.9)			NOT APPLICABLE
CIRCLING *	660 (621-2.4)		830 (791-4.0)	
ALTERNATE	(1121-4.4)		(1291-6.0)	

- MAX IAS: INITIAL : 210KT.
- NO CIRCLING N OF RWY 08 / 26 BEYOND 3NM.

Changes: 10NM MSA, RW26 MAPT, WPT NAMING CONVENTION, Editorial.

PIRGN02-180