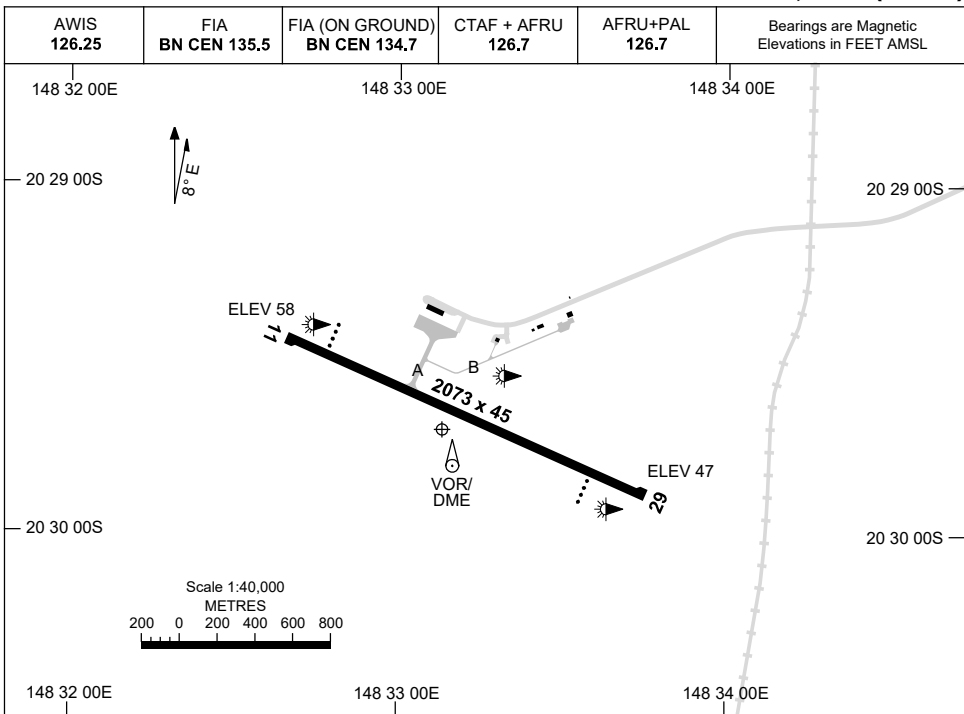


AD ELEV 82 AERODROME CHART
21 MAY 2020 20 29 42S 148 33 08E **PROSERPINE/WHITSUNDAY COAST, QLD (YBPN)**

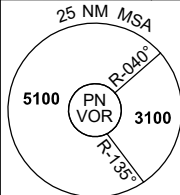


	AERODROME LIGHTING
RWY	TAXIWAY : GREEN CENTRELINE RL : AFRU+PAL 126.7 , SDBY (15 SEC)
11 <small>106</small>	PAPI 3.0° 50FT LIRL RTIL
<small>286</small> 29	PAPI 3.0° 50FT LIRL

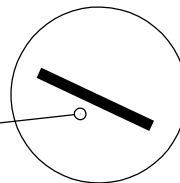
NOTES

Changes: 142FT OBST REMOVED, COORD FMT. BPNAD01-163

AWIS 126.25	FIA BN CEN 135.5	FIA (ON GROUND) BN CEN 134.7	CTAF + AFRU 126.7	AFRU+PAL 126.7	Bearings are Magnetic Elevations in FEET AMSL
----------------	---------------------	---------------------------------	----------------------	-------------------	--



**DME USING PN DME
REFERENCE WAYPOINT PN VOR**



10 NM MSA 4500

AD ELEV 82

SECTOR A

MISSED APPROACH:
TURN RIGHT, TRACK 330°. CLIMB TO 5100FT. PASSING 2800FT TURN LEFT, TRACK DCT TO PN VOR.
MAX IAS IN MISSED APPROACH TURN: 180KT.

NM TO PN VOR	25	15	11	8	6	0								
CIRCLING MINIMA	A,B: 800-2.4		C: 1030-4.0		D: 1420-5.0									
NM TO PN VOR	9.6	9	8	7	6	5	4.3	4	3.1	2.4				
ALT (3° APCH PATH)	3100	2920	2600	2280	1960	1660	1420	1330	1030	800				

SECTOR B

MISSED APPROACH:
TURN RIGHT, TRACK 113°. CLIMB TO 3100FT.

NM TO PN VOR	25	15	12	10	9	5	4	0							
CIRCLING MINIMA	A,B: 930-2.4		C: 1030-4.0		D: 1420-5.0										
NM TO PN VOR	12	11	10	9	8	7	6	5	4	3	2	1.5	1	0.4	0.1
ALT (3.3° APCH PATH)	5100	4750	4400	4050	3700	3350	3000	2650	2300	1950	1600	1420	1250	1030	930

SECTOR C

MISSED APPROACH:
TURN AS APPROPRIATE, TRACK 113°. CLIMB TO 3100FT.

NM TO PN VOR	25	15	12	9	7	5	3	0							
CIRCLING MINIMA	A,B: 870-2.4		C: 1030-4.0		D: 1420-5.0										
NM TO PN VOR	11.4	11	10	9	8	7	6	5	4	3	2	1.5	1	0.5	0.1
ALT (3.5° APCH PATH)	5100	4950	4580	4210	3840	3460	3090	2720	2350	1980	1610	1420	1230	1030	870

Changes: SDF, Editorial.

BPNDG01-172

AWIS 126.25	FIA BN CEN 135.5	FIA (ON GROUND) BN CEN 134.7	CTAF + AFRU 126.7	AFRU+PAL 126.7	Bearings are Magnetic Elevations in FEET AMSL
----------------	---------------------	---------------------------------	----------------------	-------------------	--

**DME USING PN DME
REFERENCE WAYPOINT PN VOR**

10 NM MSA 4500

AD ELEV 82

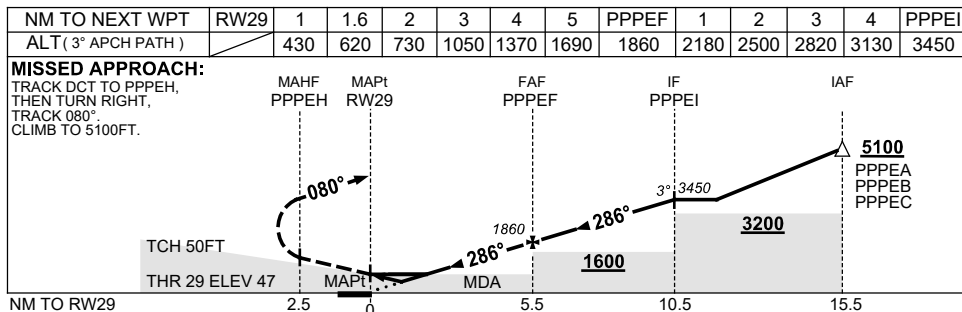
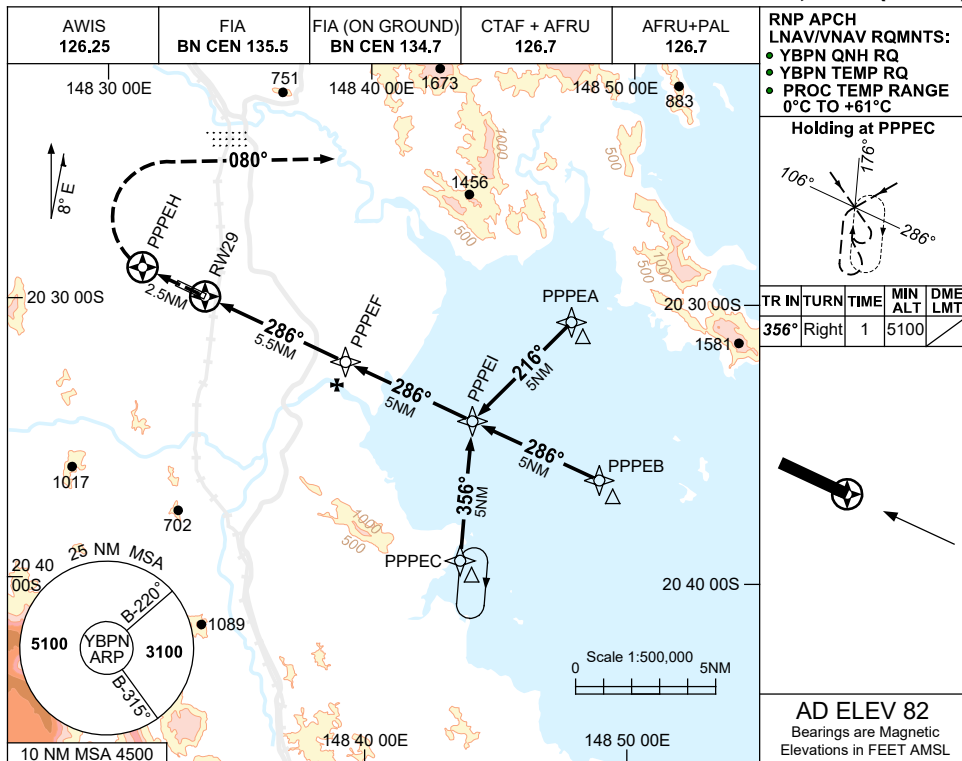
SECTOR D											MISSED APPROACH:								
NM FM VOR	25	15	13	10	8	6	5	4	0										
CIRCLING MINIMA				A,B: 910-2.4			C: 1030-4.0			D: 1420-5.0									
NM FM VOR	14.3	13	11	10	9	8	7	6	5	4	3	2.7	2	1.5	1.1				
ALT (3° APCH PATH)	5100	4690	4050	3740	3420	3100	2780	2460	2150	1830	1510	1420	1190	1030	910				

USE QNH

RNP RWY 29

24 MAR 2022

PROSERPINE/WHITSUNDAY COAST, QLD (YBPN)



NOTES

CATEGORY	A	B	C	D
LNAV/VNAV		430 (383-2.1)		
LNAV		620 (573-3.3)		
CIRCLING	800 (718-2.4)		1030 (948-4.0) 1420 (1338-5.0)	
ALTERNATE	(1218-4.4)		(1448-6.0) (1838-7.0)	

1. MAX IAS: INITIAL : 210K.T.
2. COLOUR: SEE SPEC NOTICES.

Changes: CHART TITLE, PBN SPECIFICATION BOX.

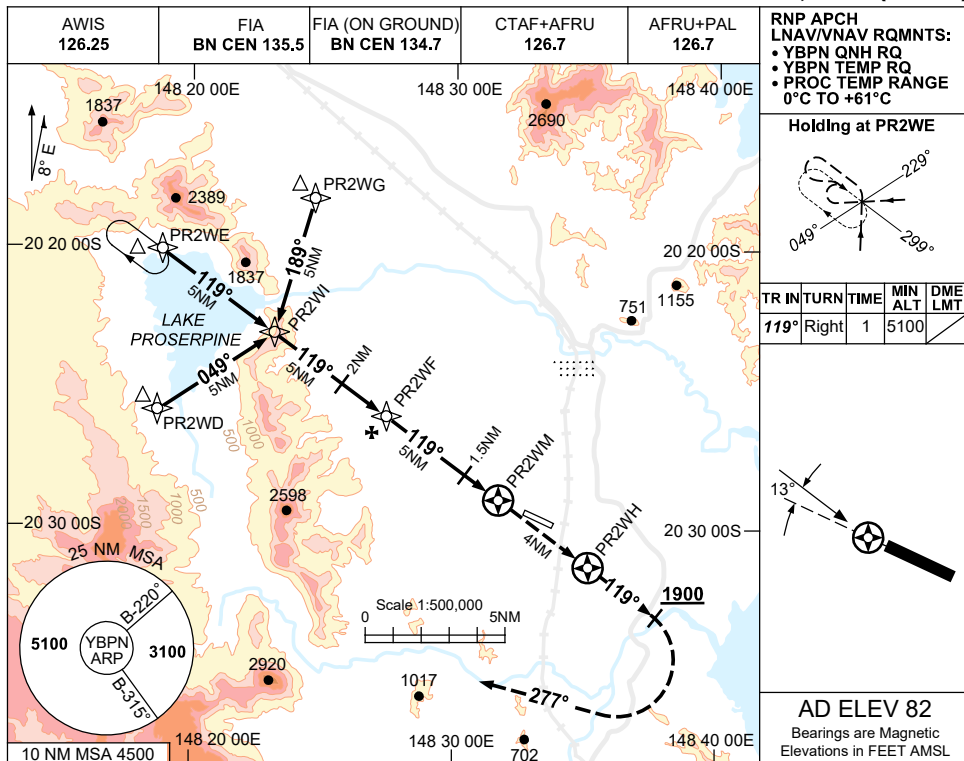
BPNGN01-170

USE QNH

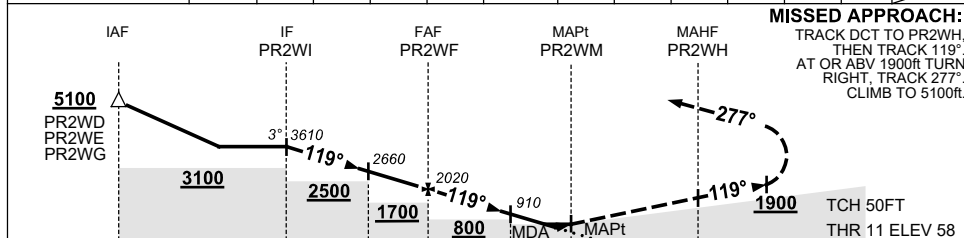
RNP RWY 11

21 MAR 2024

PROSERPINE/WHITSUNDAY COAST, QLD (YBPN)



NM TO NEXT WPT	PR2WI	4	3	2	1	PR2WF	4	3	2	1.5	0.8	0.4	PR2WM
ALT (3° APCH PATH)	3610	3300	2980	2660	2340	2020	1700	1380	1070	910	680	560	



MISSED APPROACH:
 TRACK DCT TO PR2WH,
 THEN TRACK 119°
 AT OR ABV 1900ft TURN
 RIGHT, TRACK 277°
 CLIMB TO 5100ft.

NM TO PR2WM: 15, 10, 7, 5, 1.5, 0, 1.0, 4

TCH 50FT
 THR 11 ELEV 58

NOTES

- MAX IAS:
 INITIAL : 210KT.
 MAP TURN : 200KT.
- HOLDING OVERLAPS WITH YBWN RNP S HOLDING. ACFT SEPARATION NOT ASSURED.
- COLOUR: SEE SPEC NOTICES.

CATEGORY	A	B	C	D
LNAV/VNAV	560 (502-2.8)			
LNAV	680 (622-3.5)			
CIRCLING	800 (718-2.4)	1030 (948-4.0)	1420 (1338-5.0)	
ALTERNATE	(1218-4.4)	(1448-6.0)	(1838-7.0)	

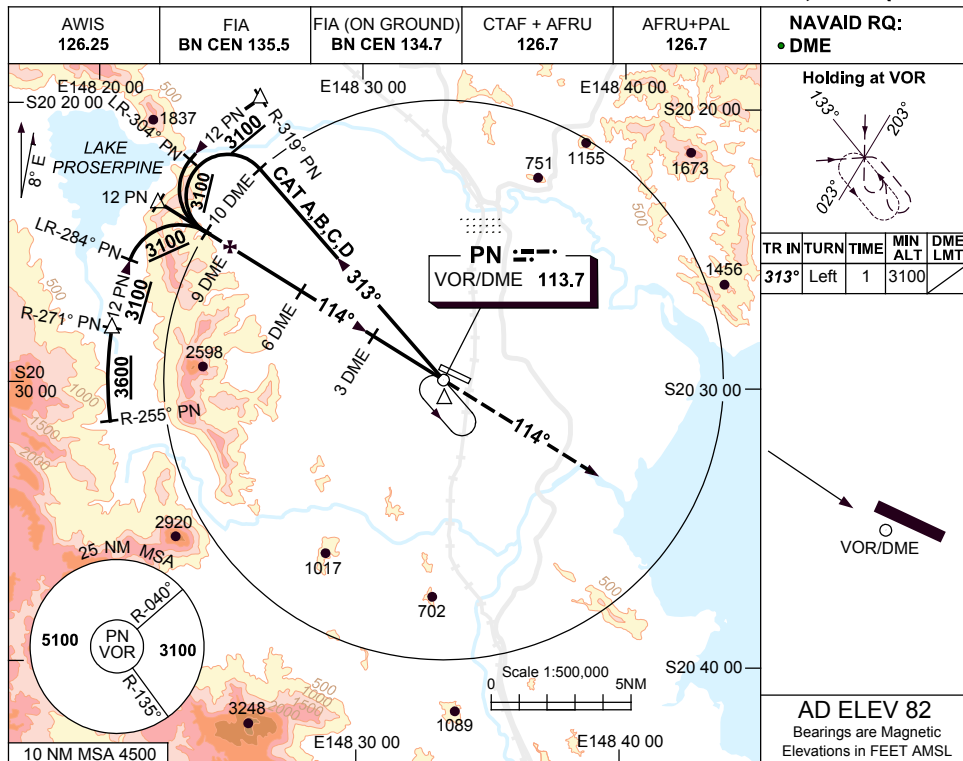
Changes: NOTES.

BPNGN02-178

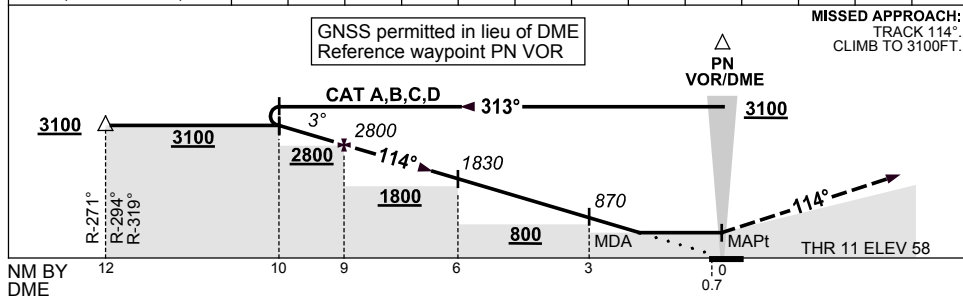
**USE QNH
PROSERPINE/WHITSUNDAY COAST, QLD (YBPN)**

VOR RWY 11

9 NOV 2017



DIST BY DME	10	9	8	7	6	5	4	3	2.4			
ALT (3° APCH PATH)	3100	2800	2470	2150	1830	1510	1190	870	680			



NOTES

CATEGORY	A	B	C	D
S-I VOR/DME	680 (622-3.5)			
CIRCLING	800 (718-2.4)	1030 (948-4.0)	1420 (1338-5.0)	
ALTERNATE	(1218-4.4)	(1448-6.0)	(1838-7.0)	

1. MAX IAS: INITIAL : 210KT.
2. COLOUR: SEE SPEC NOTICES.

Changes: CAT D, CIRCLING & ALTN MNM.

BPNV001-153

