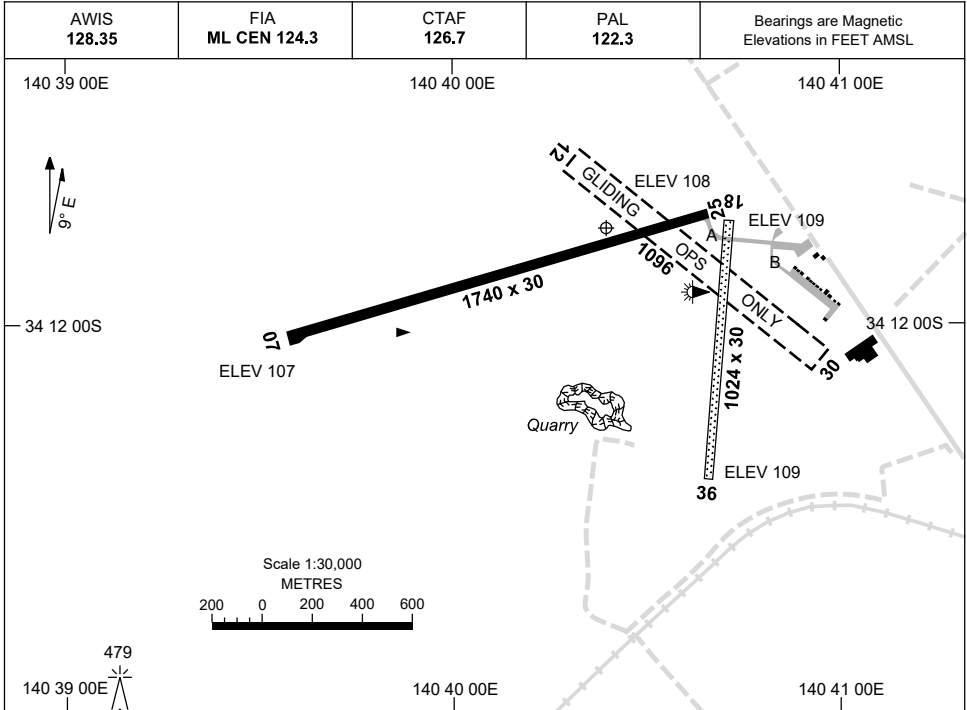


13 JUN 2024

AD ELEV 115  
34 11 47S 140 40 26E

AERODROME CHART  
**RENMARK, SA (YREN)**



<b>AERODROME LIGHTING</b>	
<b>RWY</b>	TAXIWAY : BLUE EDGE TWY A RL : PAL 122.3
<b>07</b> <small>065</small>	LIRL PTBL
<small>245</small> <b>25</b>	LIRL PTBL
<b>18</b> <small>176</small>	NIL
<small>356</small> <b>36</b>	NIL
<b>12</b>	NIL
<b>30</b>	NIL

**NOTES**

1. AWIS RQ ONE-SECOND PULSE TO ACTIVATE.
2. PTBL LIGHTING FOR EMERG USE ONLY.

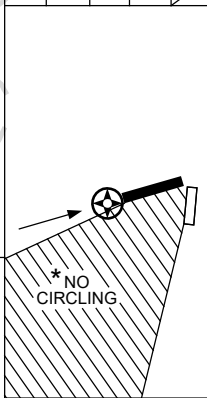
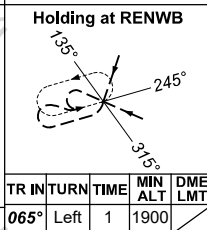
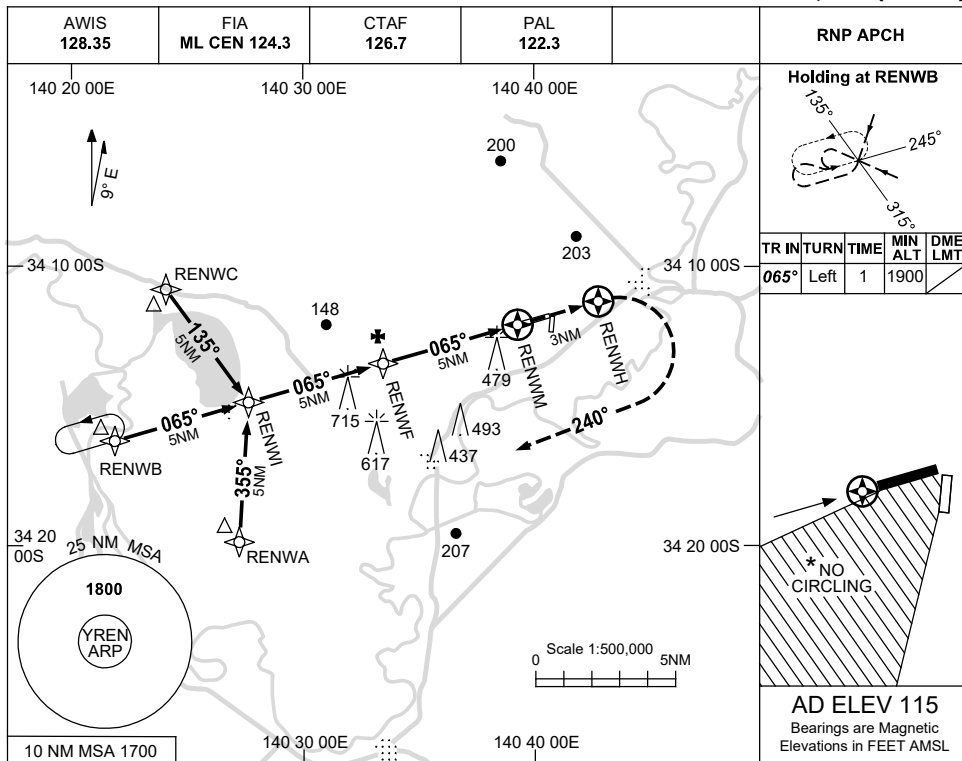
Changes: WDI ADDED, Editorial.

RENAD01-179

USE QNH

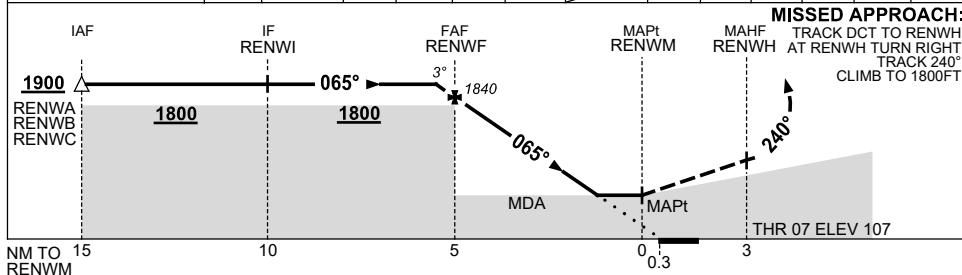
RNP RWY 07  
**RENMARK, SA (YREN)**

15 JUN 2023



**AD ELEV 115**  
 Bearings are Magnetic  
 Elevations in FEET AMSL

NM TO NEXT WPT	0.2	RENWF	4	3	2	1.5	RENWM				
ALT (3° APCH PATH)	1900	1840	1520	1200	880	730					



**MISSED APPROACH:**  
 TRACK DCT TO RENWH,  
 AT RENWH TURN RIGHT,  
 TRACK 240°,  
 CLIMB TO 1800FT.

**NOTES**

CATEGORY	A	B	C	D
LNAV	730 (623-3.5)			NOT APPLICABLE
CIRCLING *	800 (685-2.4)		890 (775-4.0)	
ALTERNATE	(1185-4.4)		(1275-6.0)	

1. MAX IAS: INITIAL : 230KT.
- \* 2. NO CIRCLING IN SECTOR SW OF RWYS 36 AND 07.

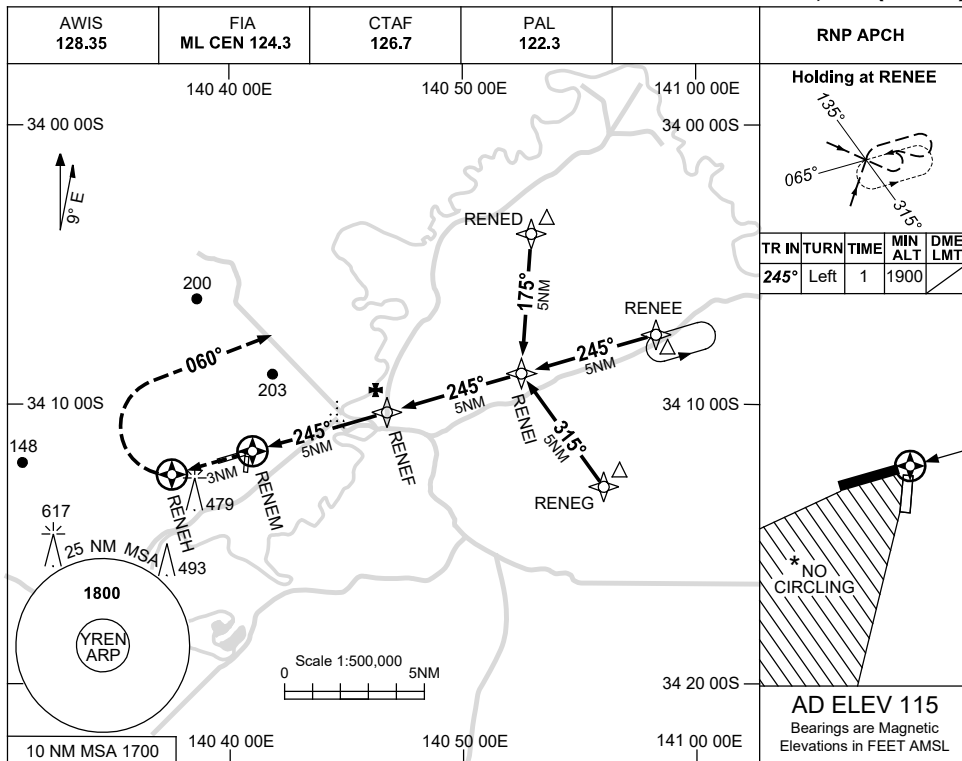
Changes: THR ELEV, CHART TITLE, PBN SPECIFICATION BOX, Editorial.

RENGN01-175

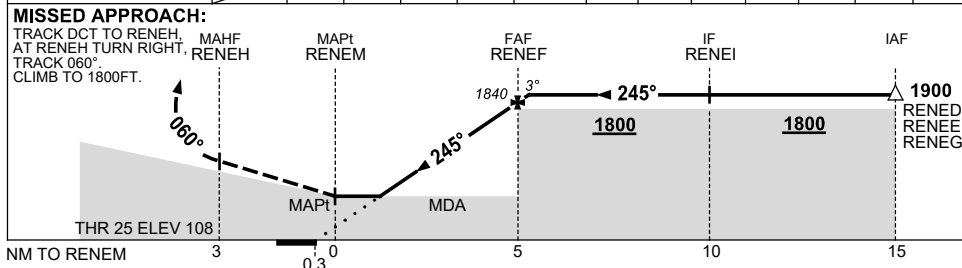
USE QNH

RNP RWY 25  
**RENMARK, SA (YREN)**

15 JUN 2023



NM TO NEXT WPT	RENEH	1.5	2	3	4	RENEI	0.2						
ALT (3° APCH PATH)		720	880	1200	1520	1840	1900						



**NOTES**

CATEGORY	A	B	C	D
LNAV	720 (605-3.4)			NOT APPLICABLE
CIRCLING *	800 (685-2.4)		890 (775-4.0)	
ALTERNATE	(1185-4.4)		(1275-6.0)	

- 1. MAX IAS: INITIAL : 230KT.
- \*2. NO CIRCLING IN SECTOR SW OF RWYS 36 AND 07.

Changes: THR ELEV, CHART TITLE, PBN SPECIFICATION BOX, Editorial.

RENGN02-175