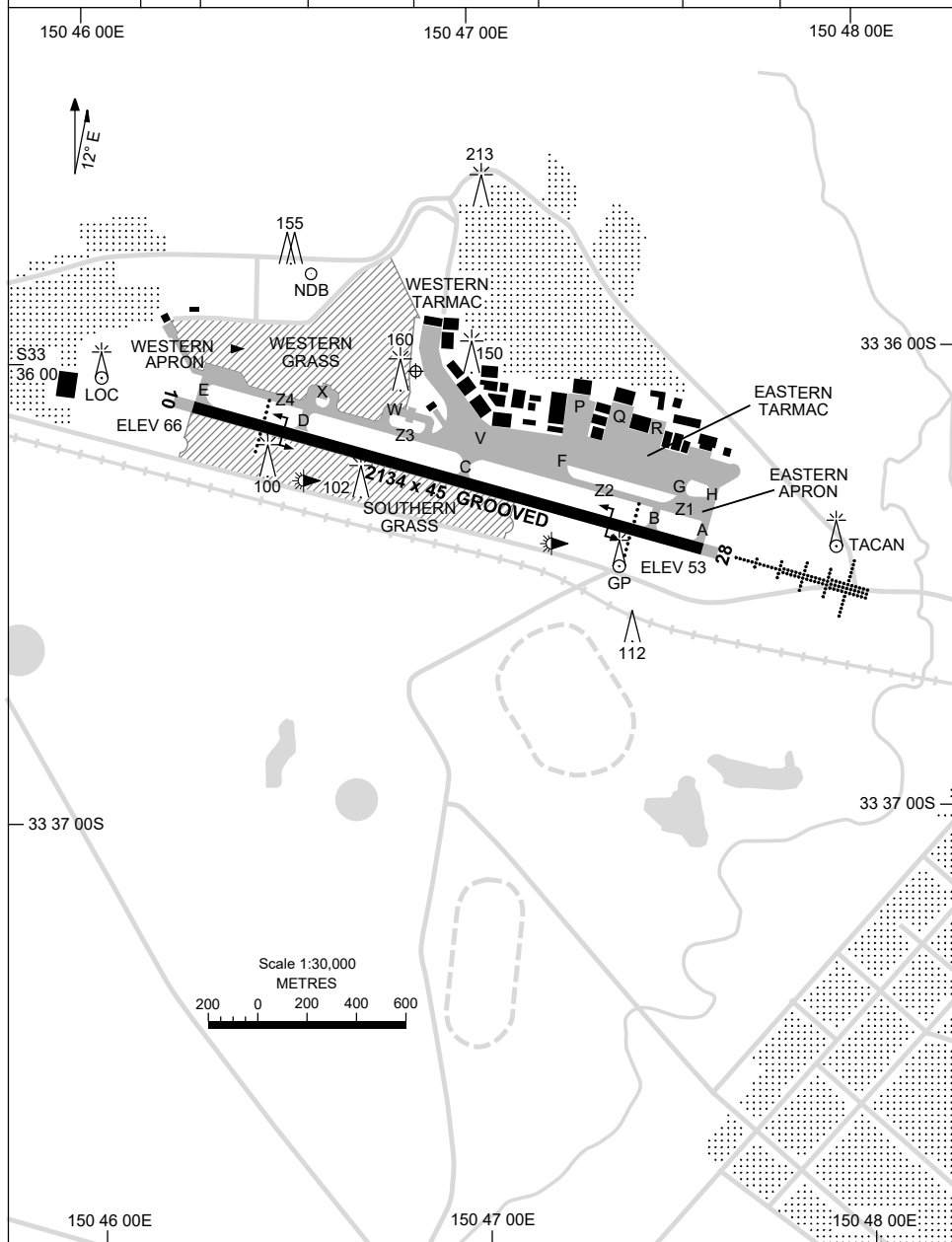


13 JUN 2024

AD ELEV 67  
33 36 02S 150 46 51E

AERODROME CHART - Page 1  
**RICHMOND, NSW (YSRI)**

ATIS/AWIS (AH) 126.3 274.55	SMC 128.25	TWR 135.5 257.3	APP 135.9 363.8	FIA (AH) SY CEN 124.55	CTAF+AFRU (AH) 135.5	AFRU+PAL 135.5	Bearings are Magnetic Elevations in FEET AMSL
--------------------------------	---------------	--------------------	--------------------	---------------------------	-------------------------	-------------------	--



Changes: AFRU+PAL, Editorial.

SRIAD01-179

13 JUN 2024

AD ELEV 67  
33 36 02S 150 46 51E

AERODROME CHART - Page 2  
**RICHMOND, NSW (YSRI)**

ATIS/AWIS (AH) 126.3 274.55	SMC 128.25	TWR 135.5 257.3	APP 135.9 363.8	FIA (AH) SY CEN 124.55	CTAF+AFRU (AH) 135.5	AFRU+PAL 135.5	Bearings are Magnetic Elevations in FEET AMSL
--------------------------------	---------------	--------------------	--------------------	---------------------------	-------------------------	-------------------	--

--	--	--	--	--	--	--	--

<b>RWY</b>	<b>AERODROME LIGHTING</b>						
	TAXIWAYS : GREEN CENTRELINE RL : AFRU+PAL 135.5, SDBY , PTBL (15 MIN PN)						
<b>10</b> <sup>095</sup> 275 <b>28</b>	PAPI 3.0° 47FT HIRL PAPI 3.0° 48FT HIRL HIAL - CAT I SFL						

<b>NOTES</b>							
--------------	--	--	--	--	--	--	--

Changes: ARFU+PAL, Editorial.

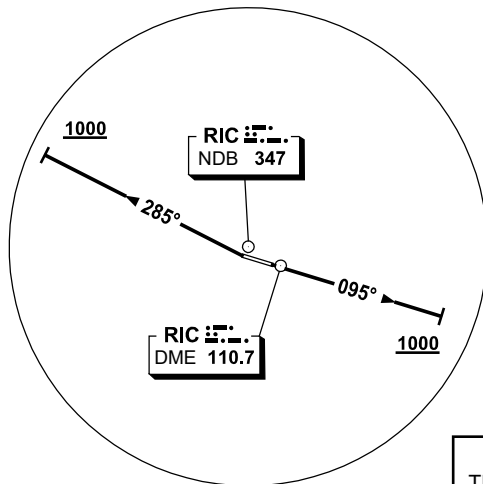
SRIAD02-179

**STANDARD INSTRUMENT DEPARTURES (SID)  
RICHMOND FOUR DEPARTURE (RADAR)  
RICHMOND, NSW (YSRI)**

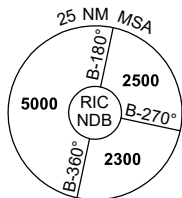
**13 JUN 2024**

ATIS/AWIS (AH) 126.3 274.55	SMC 128.25	TWR 135.5 257.3	APP 135.9 363.8	FIA (AH) SY CEN 124.55	CTAF+AFRU (AH) 135.5	AFRU+PAL 135.5	Bearings are Magnetic Elevations in FEET AMSL
--------------------------------	---------------	--------------------	--------------------	---------------------------	-------------------------	-------------------	--

NOT TO SCALE



**CAUTION:  
TREES IN RWY 10  
DEP AREA**



10 NM MSA 3300

**RICHMOND FOUR DEPARTURE (RADAR)**

**RWY 10**

- Grad 3.3%
- Track 095°
- At 1000ft and not before DER turn to assigned heading or track

**RWY 28**

- GRAD 4.9% to 2600ft, thence 3.3%
- At DER turn right track 285°
- At 1000ft and not before DER turn to assigned heading

**COMMUNICATION FAILURE PROCEDURE**

On recognition of communication failure:

- Squawk 7600
- Maintain last assigned vector for two minutes, and
- CLIMB IF NECESSARY TO MINIMUM SAFE ALTITUDE, to maintain terrain clearance, then
- proceed in accordance with the latest ATC route clearance acknowledged.

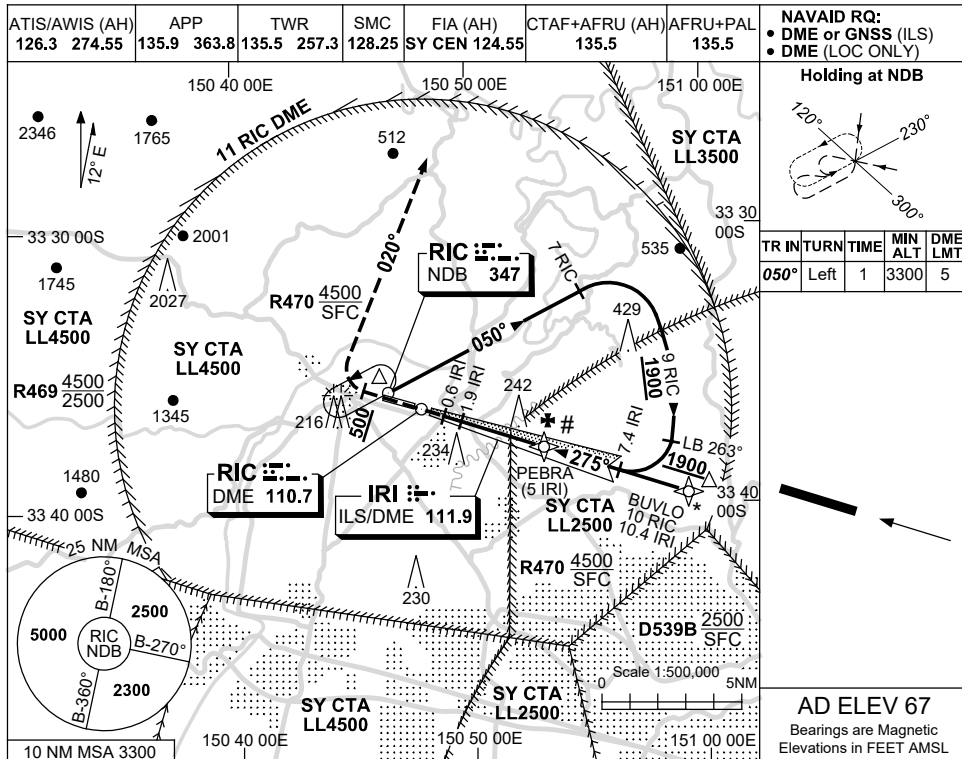
Changes: AFRU+PAL, Editorial.

SRIDP01-179

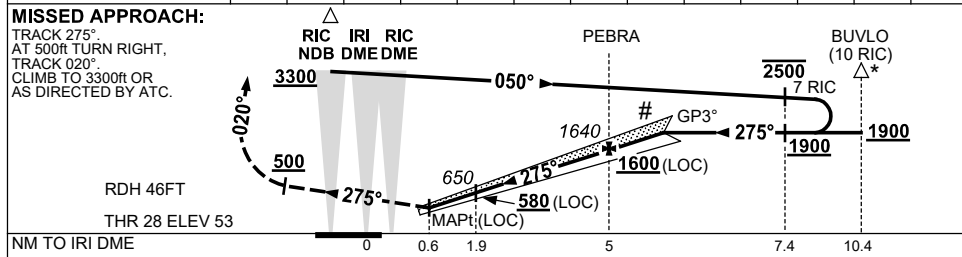
USE QNH

ILS-Z or LOC-Z RWY 28  
**RICHMOND, NSW (YSRI)**

13 JUN 2024



NM TO IRI DME	1.6	1.9	2	3	4	5	5.8					
ALT (3° APCH PATH)	550	650	680	1000	1320	1640	1900					



**NOTES**

- \* 1. ACFT MAY BE RADAR VECTORED TO IAF.
- # 2. IF MISSED APCH CONDUCTED PRIOR TO 0.6 IRI, CLIMB NOT ABV 2500FT UNTIL 0.6 IRI.
- 3. USE OF GP RESTR TO WI 7° OF RWY CL.

CATEGORY	A	B	C	D
S-I ILS		360 (307) 0.8		
S-I LOC		550 (497-1.9)		
CIRCLING	800 (733-2.4)		1090 (1023-4.0)	1160 (1093-5.0)
ALTERNATE	(1233-4.4)		(1523-6.0)	(1593-7.0)

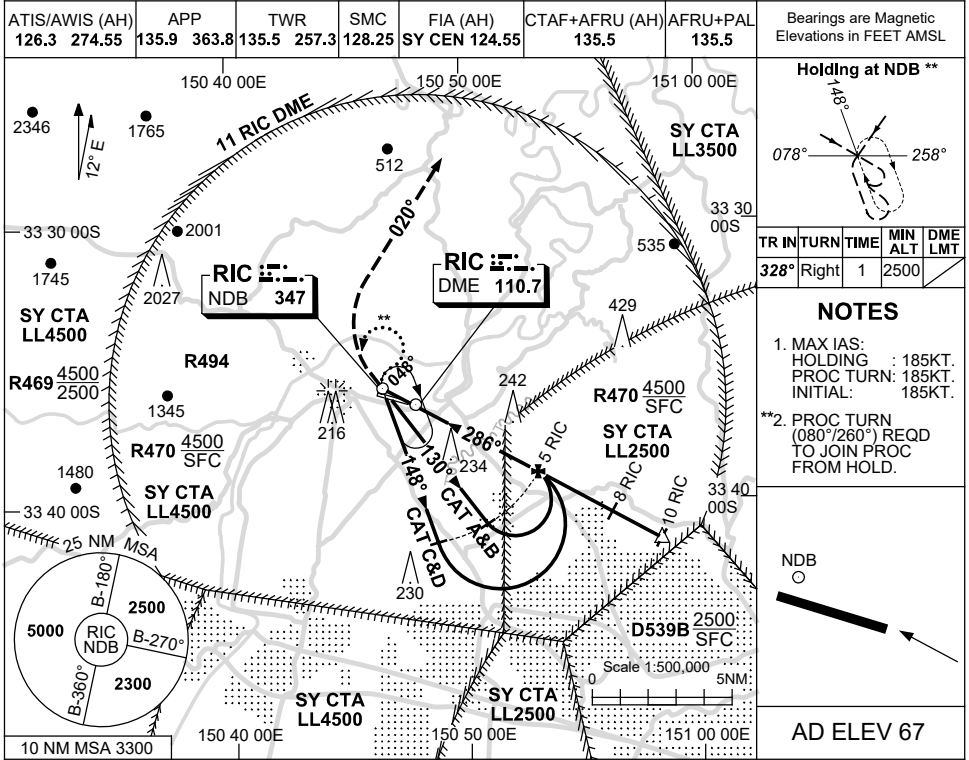
Changes: AFRU+PAL, Editorial.

SR1101-179

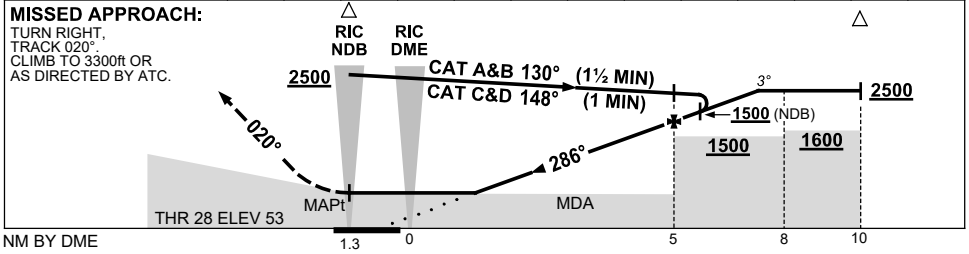
USE QNH

NDB-B or NDB RWY 28  
**RICHMOND, NSW (YSRI)**

13 JUN 2024



DIST BY DME	1.6	2	3	4	4.1	5	6	7	7.3			
ALT (3° APCH PATH)	680	820	1140	1460	1500	1780	2100	2420	2500			



**NOTES**

CATEGORY	A	B	C	D
S-I NDB/DME	<b>750 (697-4.0)</b>			
NDB	CIRCLING ONLY			
CIRCLING	<b>800 (733-2.4)</b>	<b>1090 (1023-4.0)</b>		<b>1160 (1093-5.0)</b>
ALTERNATE	(1233-4.4)		(1523-6.0) (1593-7.0)	

3. BRG FLUCTUATIONS UP TO 7° ON 148° OUTBOUND LEG BTN 4 AND 5NM.  
 4. IF MISSED APCH CONDUCTED PRIOR TO NDB CLIMB NOT ABV 2500ft UNTIL NDB.

Changes: AFRU+PAL, Editorial.

SRINB01-179