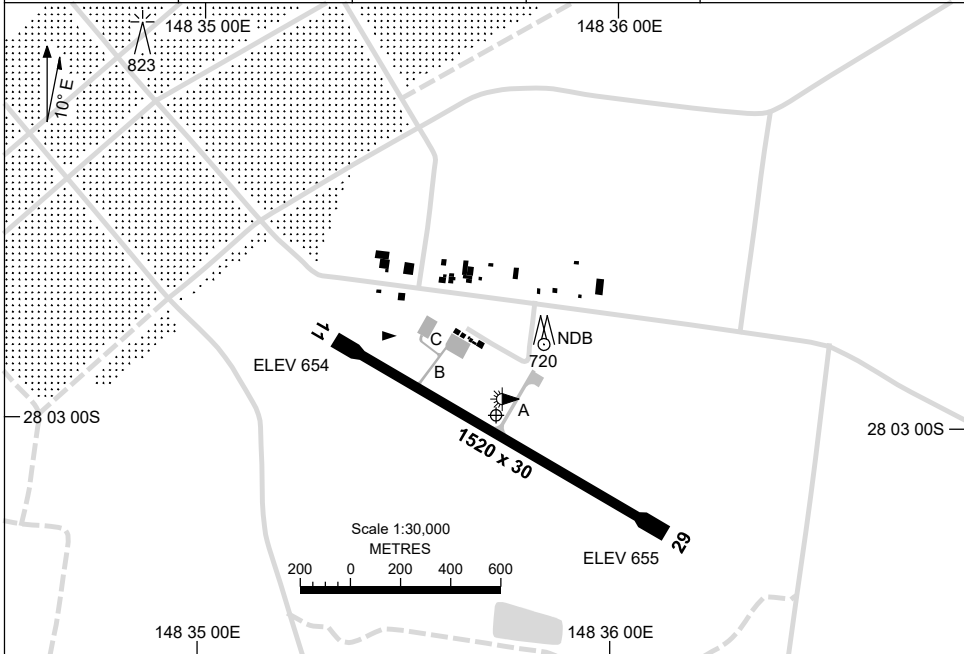


30 NOV 2023

AD ELEV 656
28 02 59S 148 35 43E

AERODROME CHART
SAINT GEORGE, QLD (YSGE)

FIA BN CEN 118.95	CTAF+AFRU 126.7	AFRU+PAL 126.7		Bearings are Magnetic Elevations in FEET AMSL
----------------------	--------------------	-------------------	--	--



	AERODROME LIGHTING	
RWY	TAXIWAY : BLUE EDGE RL : AFRU+PAL 126.7 , SDBY (15 SEC)	
11 ¹¹¹	LIRL	
²⁹¹ 29	LIRL	

NOTES

Changes: TWY, APN, REMOVED PTBL LIGHTING.

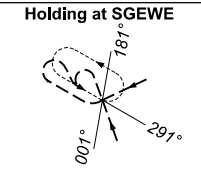
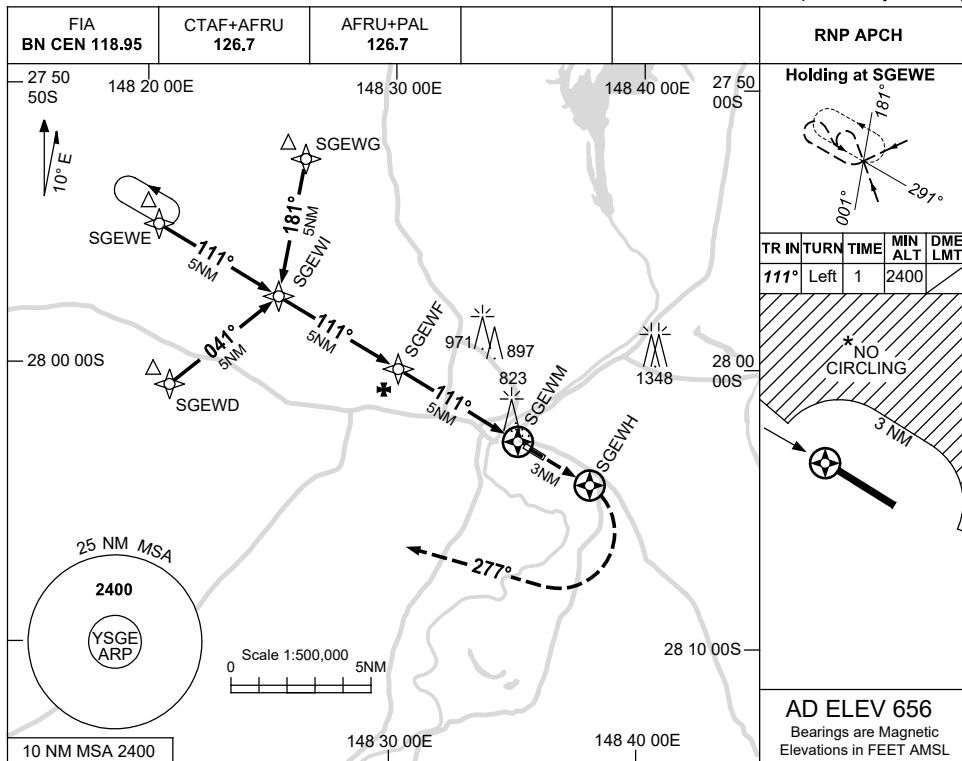
SGEAD01-177

USE QNH

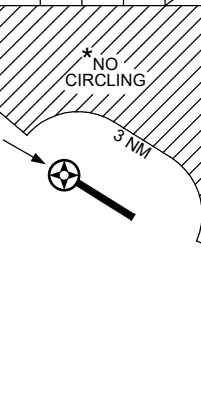
RNP RWY 11

SAINT GEORGE, QLD (YSGE)

16 JUN 2022

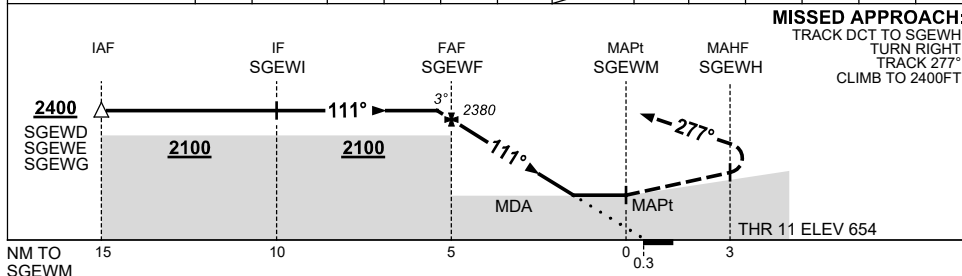


TR	IN	TURN	TIME	MIN	DME
				ALT	LMT
111°	Left	1		2400	



AD ELEV 656
Bearings are Magnetic
Elevations in FEET AMSL

NM TO NEXT WPT	0.1	SGEWF	4	3	2	1.3	SGEWM				
ALT (3° APCH PATH)	2400	2380	2070	1750	1430	1210					



MISSED APPROACH:
TRACK DCT TO SGEWH,
TURN RIGHT,
TRACK 277°,
CLIMB TO 2400FT.

NOTES

CATEGORY	A	B	C	D
LNAV	1210 (554-3.1)			NOT APPLICABLE
CIRCLING*	1250 (594-2.4)		1350 (694-4.0)	
ALTERNATE	(1094-4.4)		(1194-6.0)	

- MAX IAS: INITIAL : 230KT.
- NO CIRCLING BEYOND 3NM NORTH OF RWY 11/29.

Changes: CHART TITLE, PBN SPECIFICATION BOX.

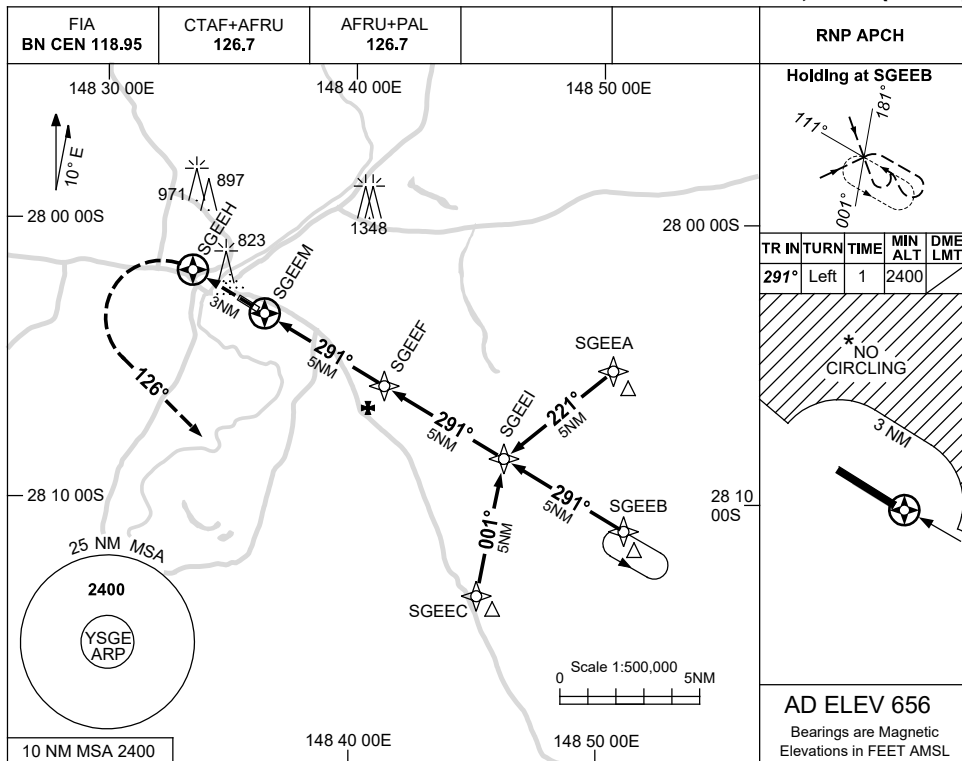
SGEGN01-171

USE QNH

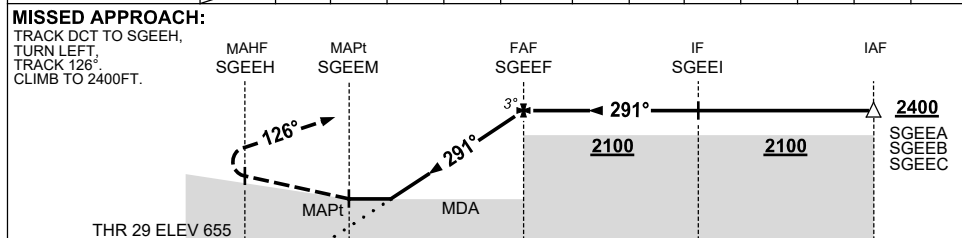
RNP RWY 29

SAINT GEORGE, QLD (YSGE)

16 JUN 2022



NM TO NEXT WPT	SGEEM	1.3	2	3	4	SGEEM			
ALT (3° APCH PATH)		1210	1440	1760	2080	2400			



NM TO SGEEM	3	0.3	5	10	15
-------------	---	-----	---	----	----

NOTES

CATEGORY	A	B	C	D
LNAV	1210 (554-3.1)			NOT APPLICABLE
CIRCLING *	1250 (594-2.4)		1350 (694-4.0)	
ALTERNATE	(1094-4.4)		(1194-6.0)	

- MAX IAS:
INITIAL : 230KT.
- * NO CIRCLING
BEYOND 3NM
NORTH OF
RWY 11/29.

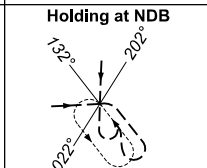
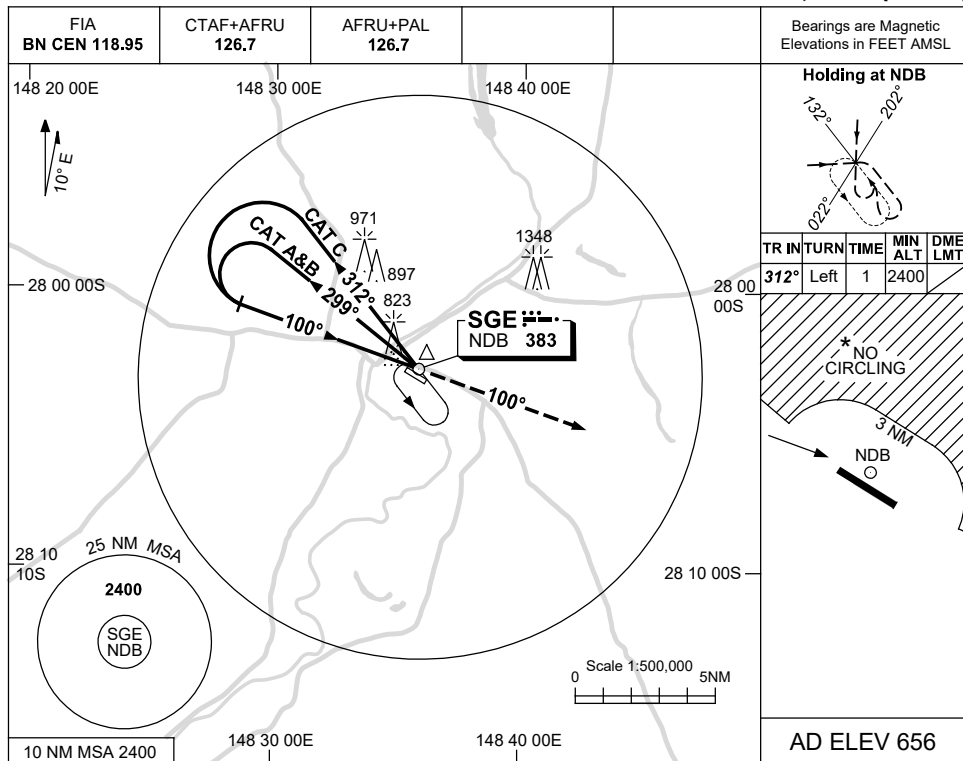
Changes: CHART TITLE, PBN SPECIFICATION BOX.

SGEGN02-171

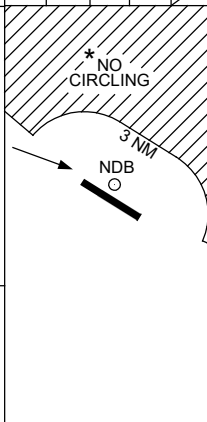
USE QNH

NDB RWY 11
SAINT GEORGE, QLD (YSGE)

7 NOV 2019

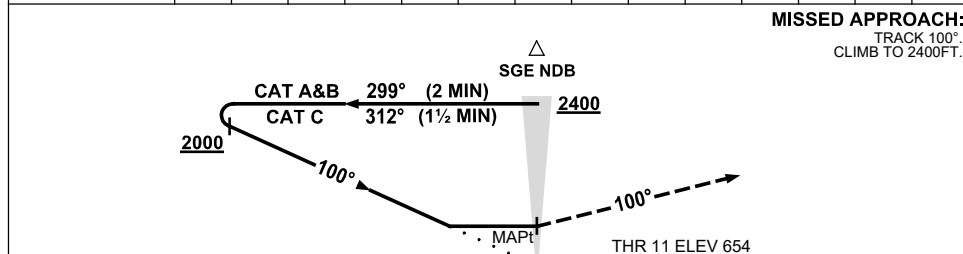


TR	IN	TURN	TIME	MIN ALT	DME LMT
312°	Left	1	2400		



AD ELEV 656

DME DIST	ALT	NOT APPLICABLE



MISSED APPROACH:
 TRACK 100°
 CLIMB TO 2400FT.

CATEGORY	A	B	C	D
S-I NDB	1250 (594-3.4)			NOT APPLICABLE
CIRCLING *	1250 (594-2.4)	1350 (694-4.0)		
ALTERNATE	(1094-4.4)		(1194-6.0)	

- NOTES**
- MAX IAS: INITIAL : 210KT.
 - NO CIRCLING BEYOND 3NM NORTH OF RWY 11/29.

Changes: LOCATION NAME, COORD FORMAT.

SGENB01-161