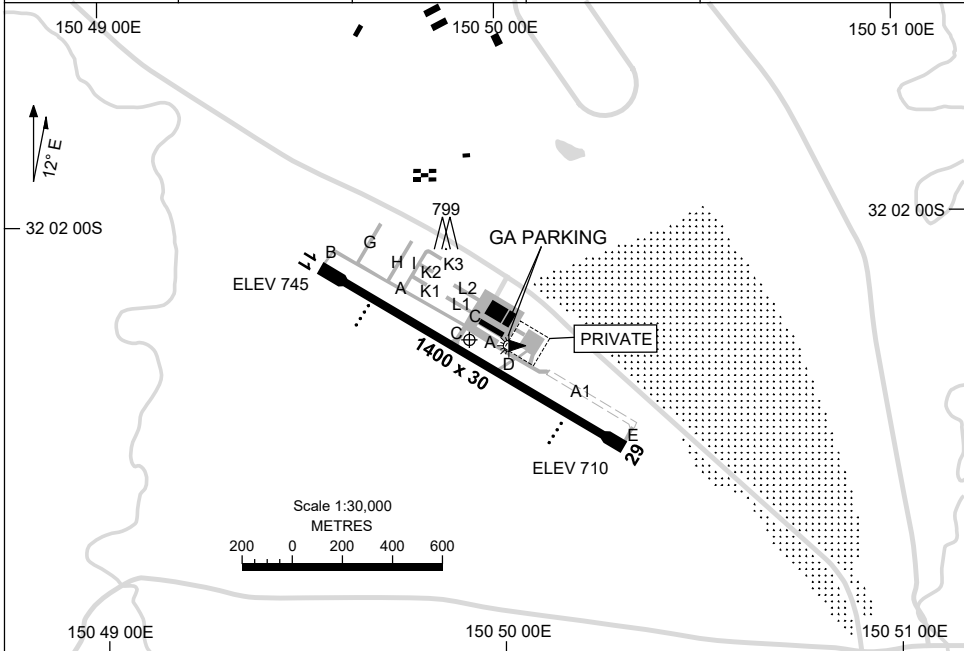


5 SEP 2024

AD ELEV 745  
32 02 14S 150 49 56E

AERODROME CHART  
**SCONE, NSW (YSCO)**

AWIS 134.55	FIA BN CEN 124.8	CTAF 128.0	PAL 128.0	Bearings are Magnetic Elevations in FEET AMSL
----------------	---------------------	---------------	--------------	--



RWY		AERODROME LIGHTING
		TAXIWAY : BLUE EDGE ON TWY C RL : PAL 128.0
11	110	LIRL PAPI RIGHT SIDE 3.0° 45FT
290	29	LIRL PAPI LEFT SIDE 3.0° 46FT

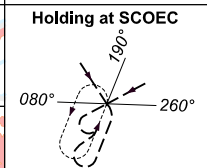
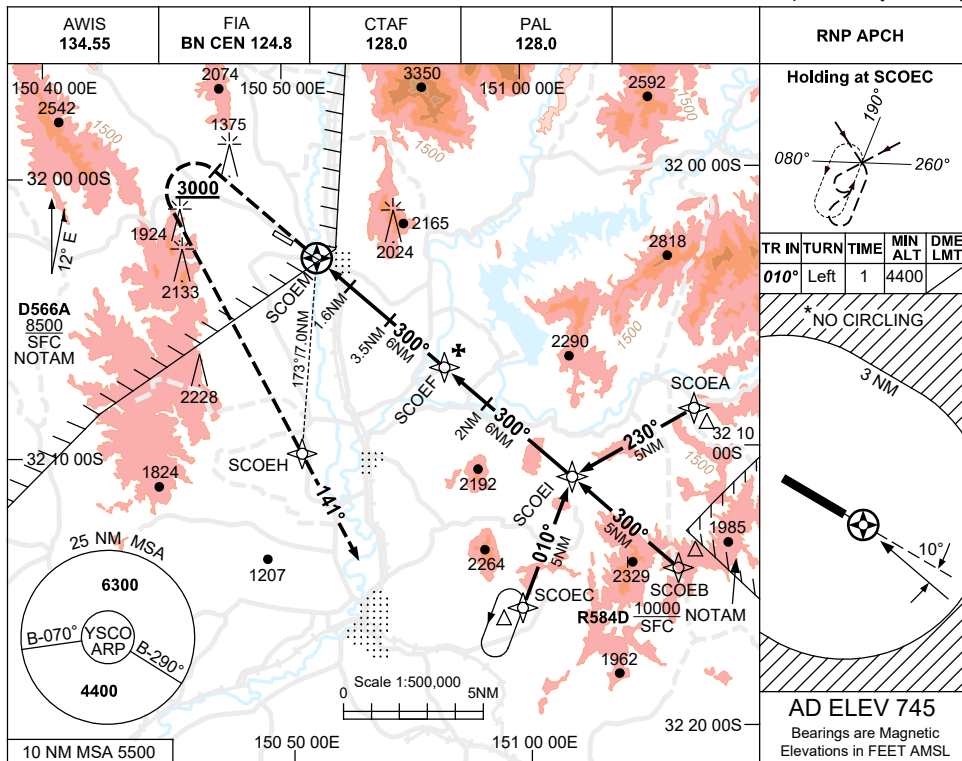
**NOTES**

- CAUTION:** THE PILOT IN COMMAND SHOULD BE AWARE OF THE TERRAIN AND OBSTACLES IN THE CIRCLING AREA PRIOR TO CONDUCTING NIGHT IFR OPERATIONS INTO SCONE.
- AWIS RQ 1 SEC TRANSMIT PULSES TO ACTIVATE.
- FIA FREQ 124.8 AVBL 4000FT.
- PAL RQ THREE ONE SECOND PULSES TO ACTIVATE.

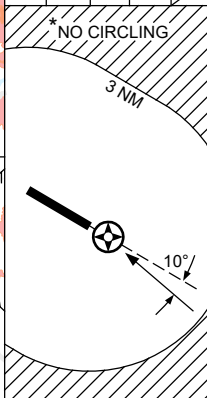
USE QNH

RNP RWY 29  
**SCONE, NSW (YSCO)**

30 NOV 2023

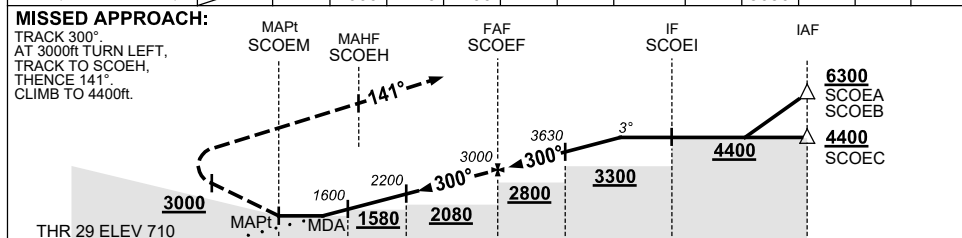


TR	IN	TURN	TIME	MIN ALT	DME LMT
010°	Left	1	4400		



**AD ELEV 745**  
 Bearings are Magnetic  
 Elevations in FEET AMSL

NM TO NEXT WPT	SCOEM	1.5	1.6	2	3.5	4	5	SCOEF	1	2	3	4.4
ALT (3° APCH PATH)		1580	1600	1720	2200	2360	2680	3000	3320	3630	3950	4400



- NOTES**
- MAX IAS: INITIAL : 210KT. MAP TURN: 200KT.
  - NO CIRCLING BEYOND 3NM.
  - CLR MAY BE RQD. WHEN R584D ACT. (WLM APP 135.7)
  - COLOUR: SEE SPEC NOTICES.

CATEGORY	A	B	C	D
LNAV	1580 (870-5.0)			NOT APPLICABLE
CIRCLING *	2040 (1295-2.4)		2530(1785-4.0)	
ALTERNATE	(1795-4.4)		(2285-6.0)	

Changes: R584D REPLACES R583B, ADDED D566A, NOTES, Editorial. SCOGN01-177