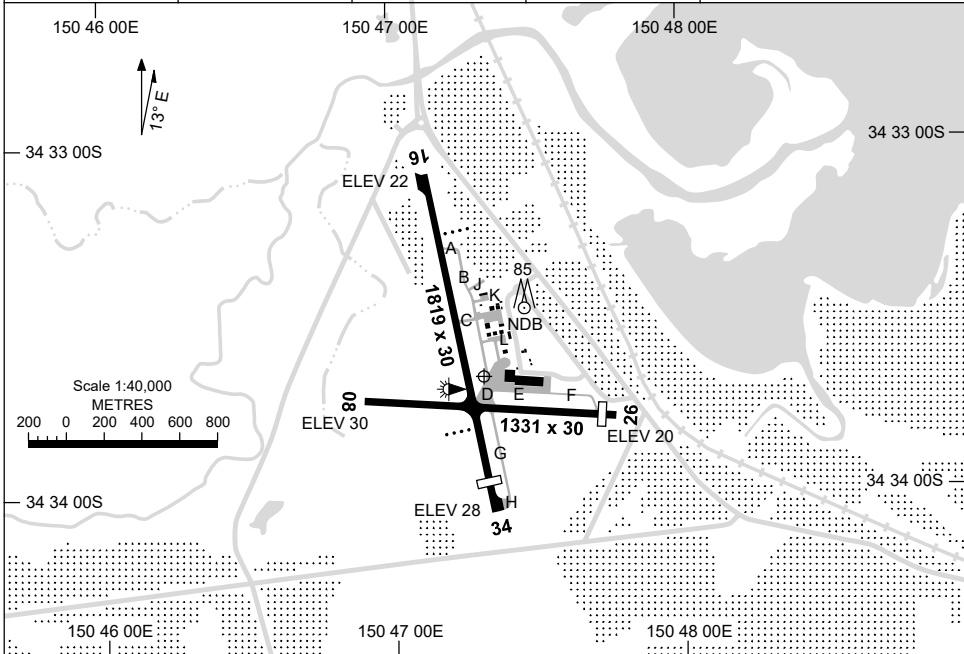


7 SEP 2023 AD ELEV 31  
34 33 40S 150 47 19E

**AERODROME CHART**  
**SHELLHARBOUR AIRPORT, NSW (YSHL)**

AWIS 120.35	FIA SY CEN 124.55	CTAF+AFRU 127.3	AFRU+PAL 127.3	Bearings are Magnetic Elevations in FEET AMSL
----------------	----------------------	--------------------	-------------------	--------------------------------------------------



RWY		AERODROME LIGHTING
		TAXIWAY : BLUE EDGE TWY D, H AND G RL : AFRU+PAL 127.3, SDBY (28 SEC)
<b>16</b> <sup>157</sup>		PAPI 3.7° 69FT LIRL
<sup>337</sup> <b>34</b>		PAPI 3.4° 53FT LIRL
<b>08</b> <sup>082</sup>		LIRL
<sup>261</sup> <b>26</b>		LIRL

**NOTES**

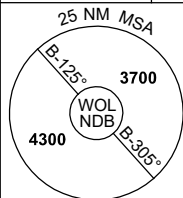
1. AWIS 120.35 ACTIVATED BY 1 SEC TRANSMISSION.
2. SY CEN FIA 124.55 AVBL IN CIRCUIT AREA.
3. NIGHT OPS FOR SCHEDULED AND NON-SCHEDULED ACFT  
ABV 5700KG MTOW MUST BE FLOWN FROM A RWY ALIGNED  
RNP APCH UNLESS APPROVED BY CASA.

Changes: RWY 08/26 LIRL, TWY LIGHTING, Editorial.

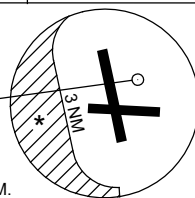
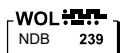
SHLAD01-176

7 NOV 2019

AWIS 120.35	FIA SY CEN 124.55	CTAF+AFRU 127.3	AFRU+PAL 127.3		Bearings are Magnetic Elevations in FEET AMSL
----------------	----------------------	--------------------	-------------------	--	--------------------------------------------------



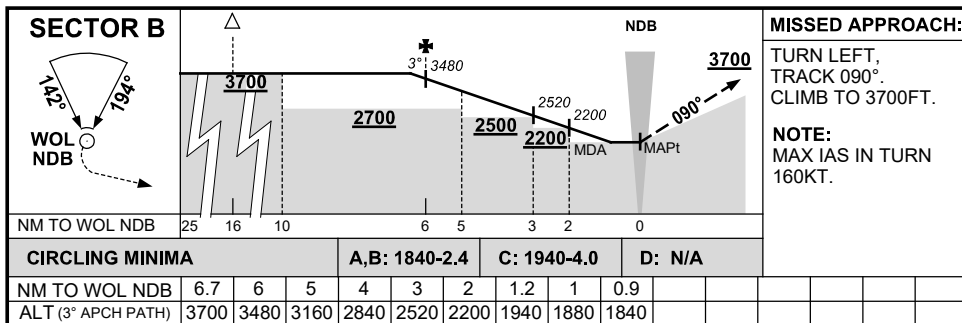
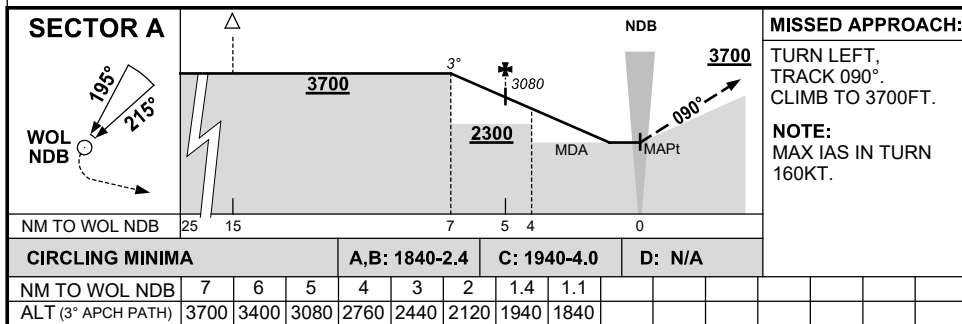
REFERENCE WAYPOINT WOL NDB



\* NO CIRCLING WEST OF Rwy 16/34 BEYOND 3NM.

10 NM MSA 4300

AD ELEV 31

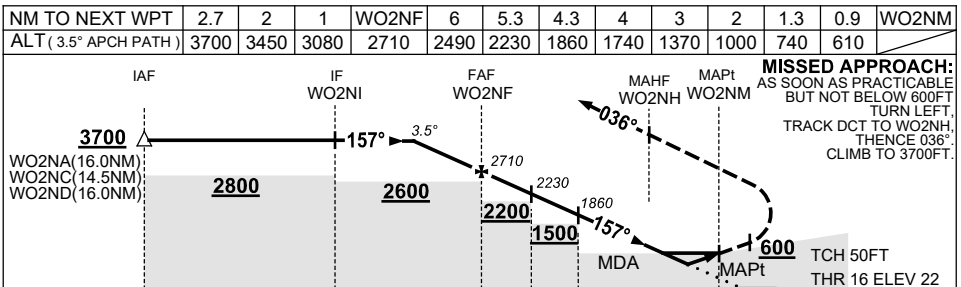
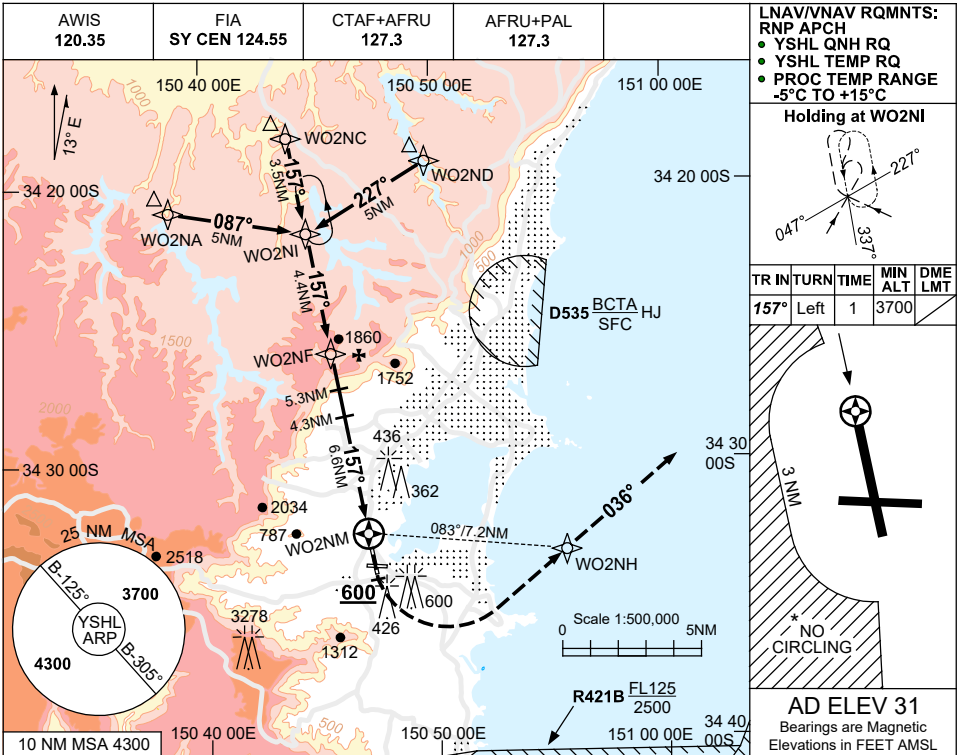


USE QNH

RNP RWY 16

8 SEP 2022

**SHELLHARBOUR AIRPORT, NSW (YSHL)**



CATEGORY	A	B	C	D
LNAV/VNAV	610 (588-2.9)			NOT APPLICABLE
LNAV	740 (718-3.5)			
CIRCLING *	1840 (1809-2.4)		1940 (1909-4.0)	
ALTERNATE	(2309-4.4)		(2409-6.0)	

**NOTES**

- MAX IAS: 230KT.  
INITIAL HOLDING: 210KT.  
MAP TURN: 190KT.
- NO CIRCLING WEST OF RWY 16/34 BEYOND 3NM.
- APCH PATH ANGLE DOES NOT COINCIDE WITH PAPI ON GLIDE SLOPE INDICATION.
- COLOUR: SEE SPEC NOTICES.

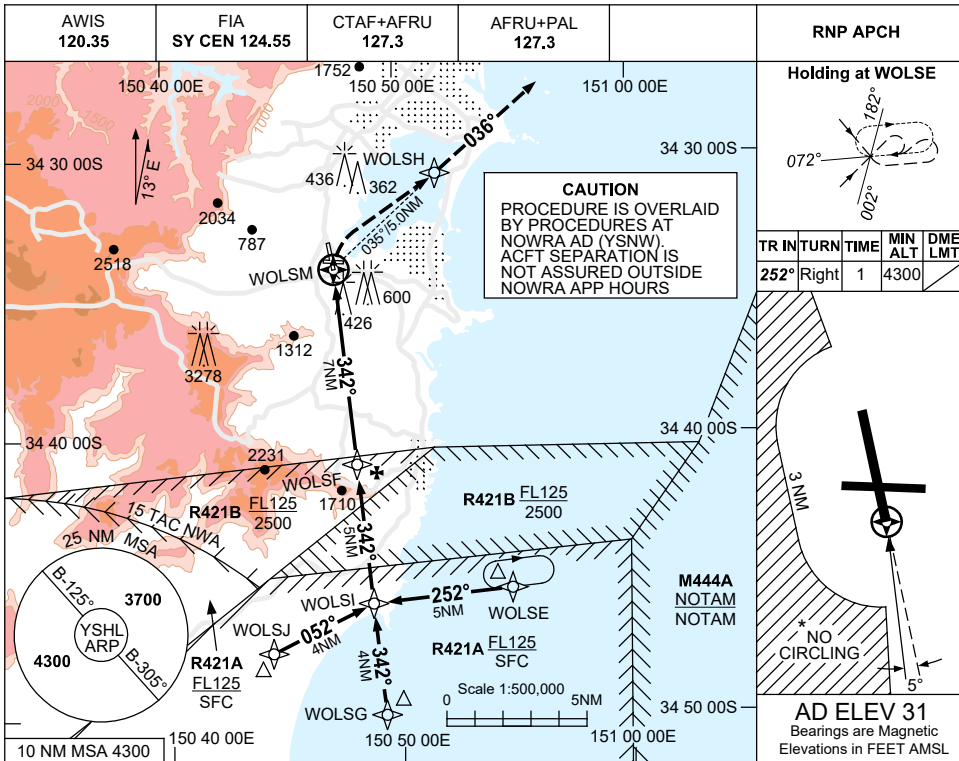
Changes: Editorial.

SHLGN01-172

**USE QNH**  
**SHELLHARBOUR AIRPORT, NSW (YSHL)**

RNP RWY 34

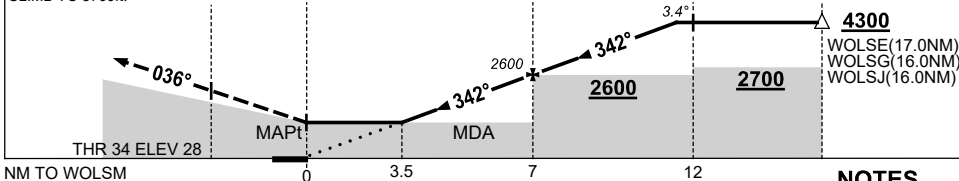
**30 NOV 2023**



NM TO NEXT WPT	WOLSM	3.5	4	5	6	WOLSF	1	2	3	4	4.7	
ALT (3.4° APCH PATH)		1340	1520	1880	2240	2600	2960	3320	3680	4040	4300	

**MISSED APPROACH:**

TURN RIGHT,  
TRACK DCT TO WOLSH, MAHF  
THEN TRACK 036°.  
CLIMB TO 3700ft.



**NOTES**

1. ATC CLR RQ THRU R421. (NOWRA APP 123.5)
2. MAX IAS: INITIAL : 200KT. MAP TURN: 190KT.
- \*3. NO CIRCLING WEST OF RWY 16/34 BEYOND 3NM.
4. COLOUR: SEE SPEC NOTICES.

CATEGORY	A	B	C	D
LNAV	1340 (1309-5.0)			NOT APPLICABLE
CIRCLING *	1840 (1809-2.4)		1940 (1909-4.0)	
ALTERNATE	(2309-4.4)		(2409-6.0)	

Changes: M444A REPLACES R495A, Editorial.

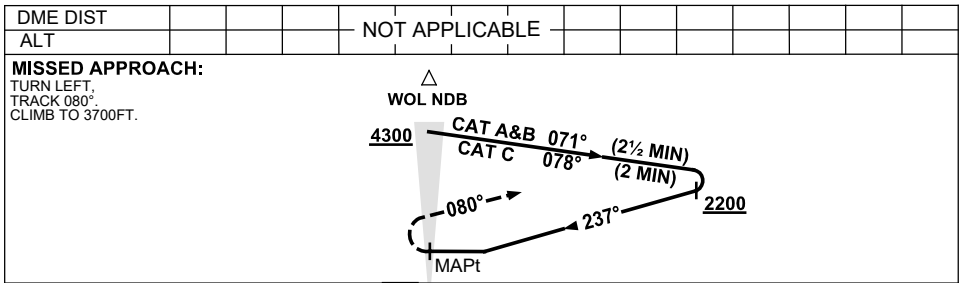
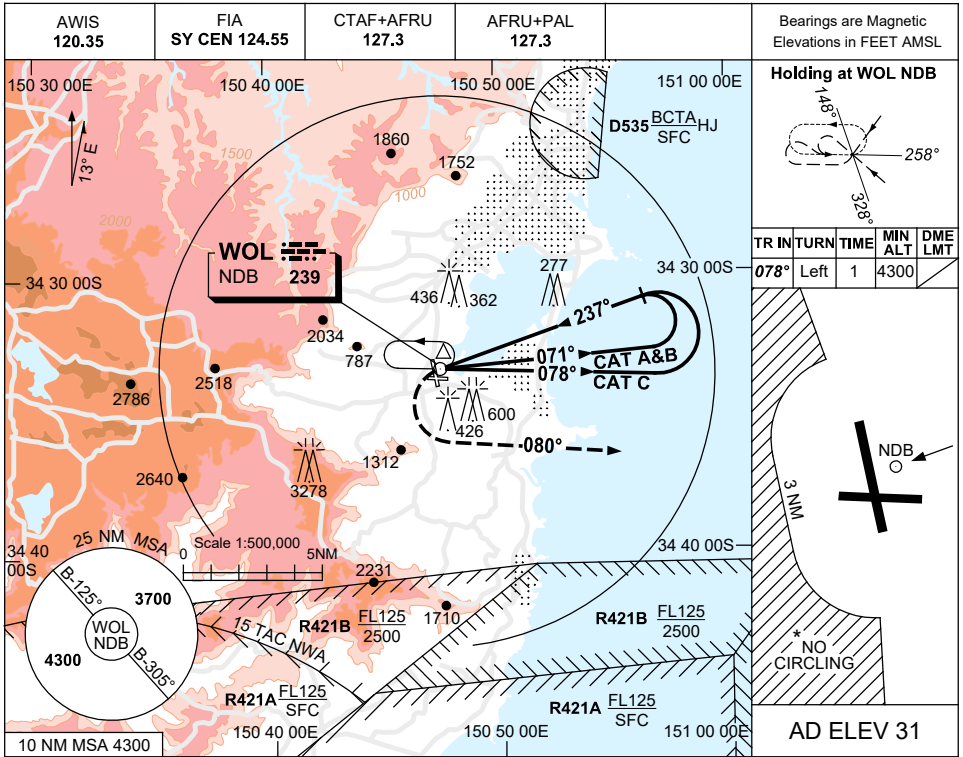
SHLGN02-177

USE QNH

NDB-A

8 SEP 2022

**SHELLHARBOUR AIRPORT, NSW (YSHL)**



**NOTES**

1. MAX IAS :  
HOLDING: 180KT.  
INITIAL :  
CAT A&B : 140KT.  
CAT C : 180KT.  
MAP TURN: 180KT.
- \*2. NO CIRCLING WEST OF RWY 16/34 BEYOND 3NM.
3. COLOUR: SEE SPEC NOTICES.

CATEGORY	A	B	C	D
				NOT APPLICABLE
CIRCLING*	1840 (1809-2.4)		1940 (1909-4.0)	
ALTERNATE	(2309-4.4)		(2409-6.0)	

Changes: Editorial.

SHLN01-172