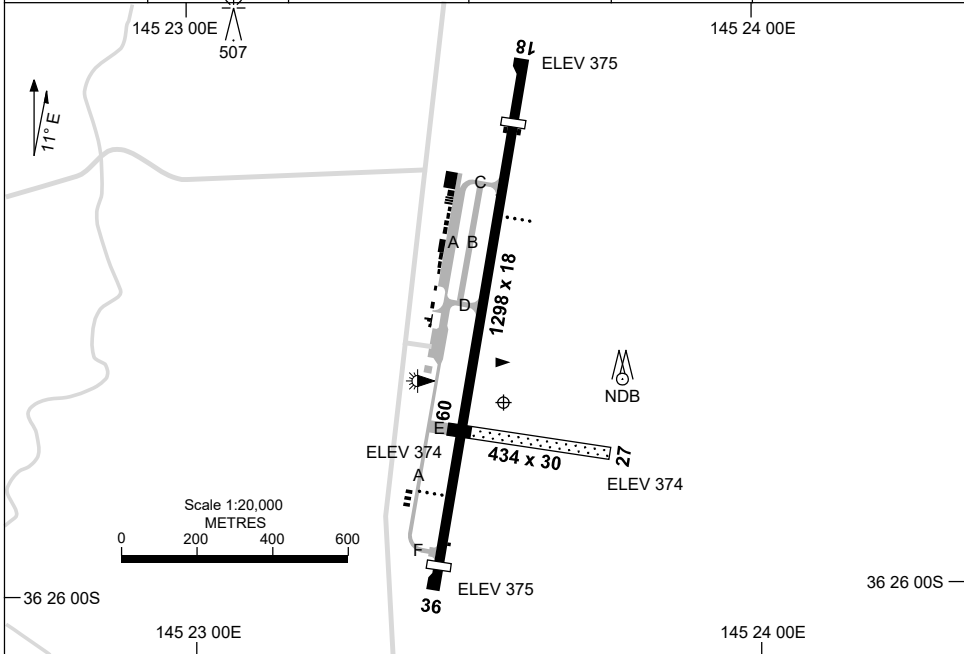


8 SEP 2022

AD ELEV 375
36 25 44S 145 23 33E

AERODROME CHART
SHEPPARTON, VIC (YSHT)

AWIS 212	FIA ML CEN 122.4	CTAF+AFRU/UNICOM 118.8	AFRU+PAL 118.8	PAL 123.9	Bearings are Magnetic Elevations in FEET AMSL
-------------	---------------------	---------------------------	-------------------	--------------	--



AERODROME LIGHTING	
RWY	TAXIWAY : BLUE EDGE RL : PAL 123.9 , AFRU+PAL 118.8 , PTBL (FOR EMERG USE ONLY 45MIN PN)
18 ¹⁷⁹	PAPI 3.0° 38FT LIRL
³⁵⁹ 36	PAPI 3.3° 44FT LIRL
09 ⁰⁸⁸	NIL
²⁶⁸ 27	NIL

NOTES

1. FIA FREQ 122.4 AVBL CIRCUIT AREA.

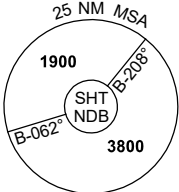
Changes: RWY 18 END, TWY B ADDED, TERMINAL BUILDINGS, Editorial.

SHTAD01-172

GNSS ARRIVAL PROCEDURES SHEPPARTON, VIC (YSHT)

17 JUN 2021

AWIS 212	FIA ML CEN 122.4	CTAF+AFRU/UNICOM 118.8	AFRU+PAL 118.8	PAL 123.9	Bearings are Magnetic Elevations in FEET AMSL
-------------	---------------------	---------------------------	-------------------	--------------	--




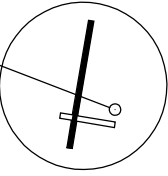
25 NM MSA

1900
SHT NDB
3800

B-206°
B-062°

REFERENCE WAYPOINT SHT NDB

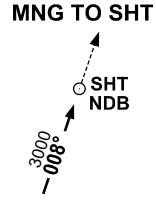


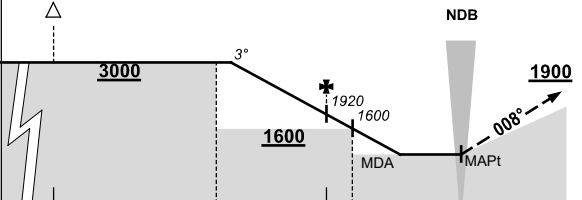


10 NM MSA 2800

AD ELEV 375

MNG TO SHT





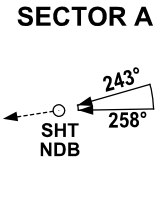
NDB

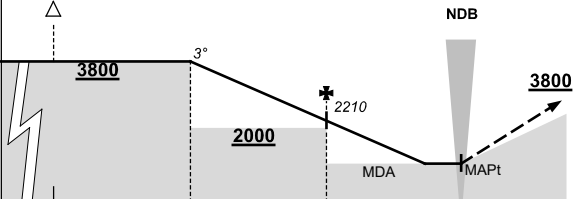
MISSED APPROACH:

TRACK 008°.
CLIMB TO 1900FT.

NM TO SHT NDB	25	15	9	5	4	0								
CIRCLING MINIMA	A,B: 1060-2.4		C: N/A		D: N/A									
NM TO SHT NDB	8.4	8	7	6	5	4	3	2.3						
ALT (3° APCH PATH)	3000	2870	2560	2240	1920	1600	1280	1060						

SECTOR A





NDB

MISSED APPROACH:

CLIMB ON TRACK
TO 3800FT.

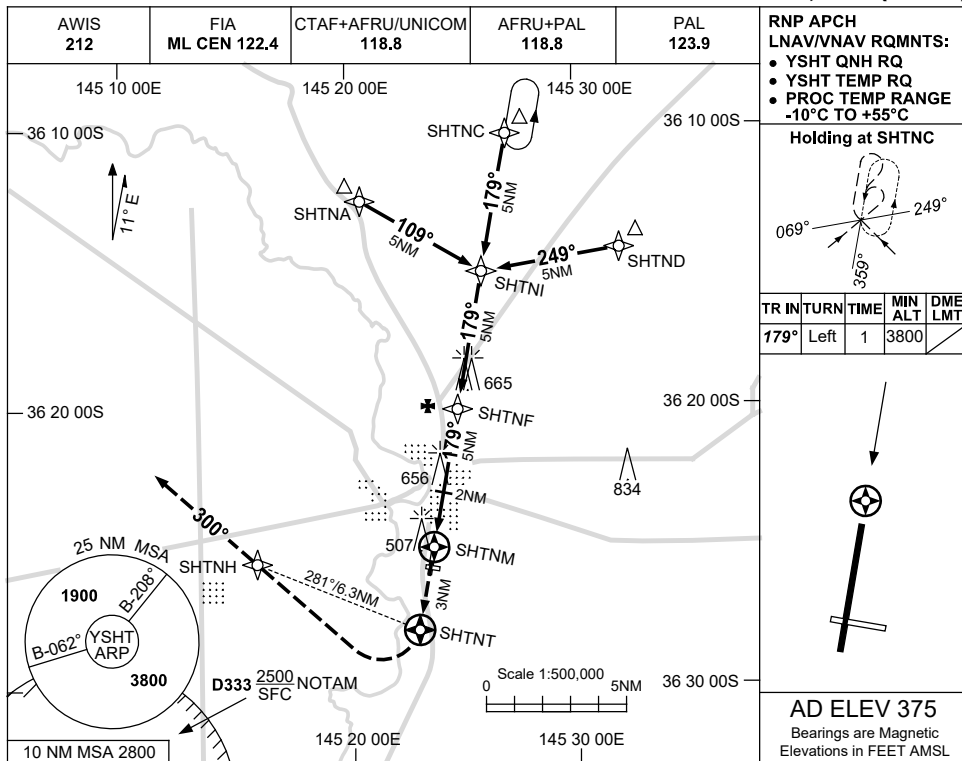
NM TO SHT NDB	25	15	10	5	0									
CIRCLING MINIMA	A,B: 1060-2.4		C: N/A		D: N/A									
NM TO SHT NDB	10	9	8	7	6	5	4	3	2	1.4				
ALT (3° APCH PATH)	3800	3480	3160	2840	2530	2210	1890	1570	1250	1060				

USE QNH

RNP RWY 18

SHEPPARTON, VIC (YSHT)

23 MAR 2023



RNP APCH LNAV/VNAV RQMTS:

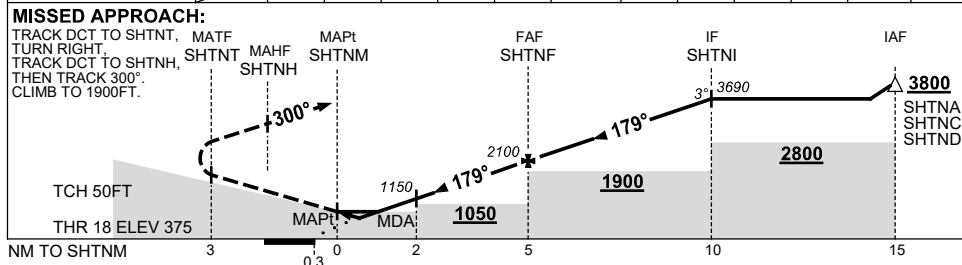
- YSHT QNH RQ
- YSHT TEMP RQ
- PROC TEMP RANGE -10°C TO +55°C

Holding at SHTNC

TR	TURN	TIME	MIN ALT	DME LMT
179°	Left	1	3800	

AD ELEV 375
Bearings are Magnetic
Elevations in FEET AMSL

NM TO NEXT WPT	SHTNM	0.7	1.2	2	3	4	SHTNF	1	2	3	4	SHTNI
ALT (3° APCH PATH)		670	880	1150	1470	1780	2100	2420	2740	3060	3380	3690



NOTES

CATEGORY	A	B	C	D
LNAV/VNAV	670 (295-1.6)		NOT APPLICABLE	
LNAV	880 (505-2.8)			
CIRCLING	1060 (685-2.4)			
ALTERNATE	(1185-4.4)			

Changes: CHART TITLE, PBN SPECIFICATION BOX.

SHTGN01-174

