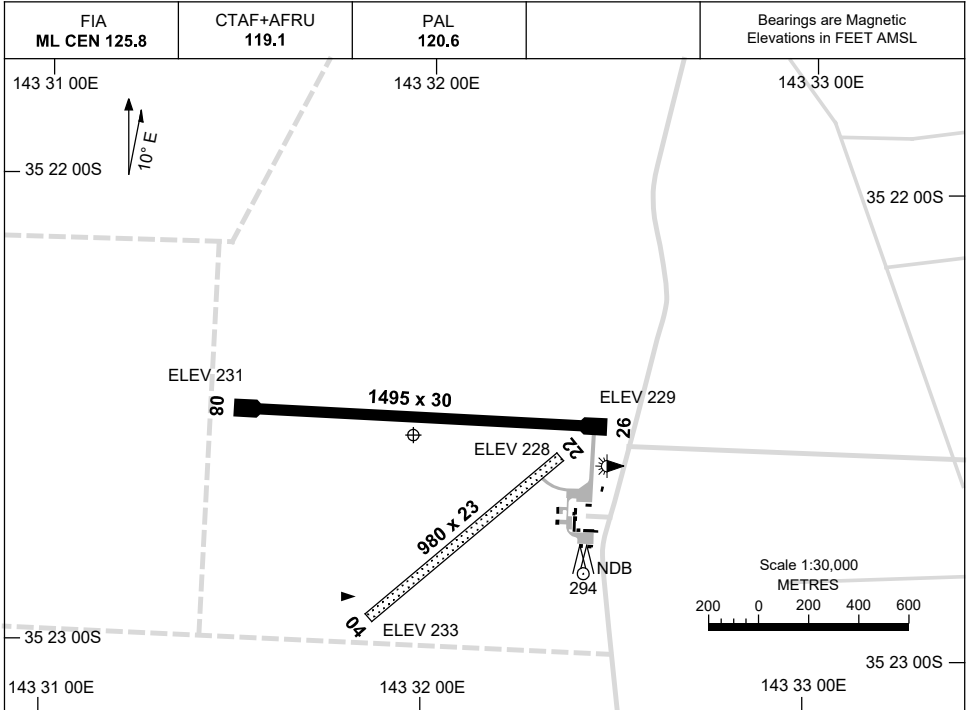


15 JUN 2023

AD ELEV 234
35 22 33S 143 31 58E

AERODROME CHART
SWAN HILL, VIC (YSWH)



AERODROME LIGHTING	
RWY	TAXIWAY : BLUE EDGE RL : PAL 120.6 (RWY 04/22 PTBL EMERG ONLY 1 HR PN. CTC ARO 0400 806 604)
08 <small>081</small>	LIRL
<small>261</small> 26	LIRL
04 <small>039</small>	PTBL
<small>219</small> 22	PTBL

NOTES

- AWIS (PHONE) 03 8470 3221
- ML CEN FIA 125.8 AVBL ABV 2500FT.

Changes: THR ELEV, NOTE 1 MOVED, Editorial.

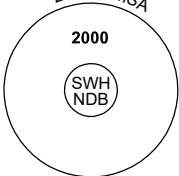
SWHAD01-175

GNSS ARRIVAL PROCEDURES SWAN HILL, VIC (YSWH)

30 NOV 2023

FIA ML CEN 125.8	CTAF+AFRU 119.1	PAL 120.6			Bearings are Magnetic Elevations in FEET AMSL
----------------------------	---------------------------	---------------------	--	--	--

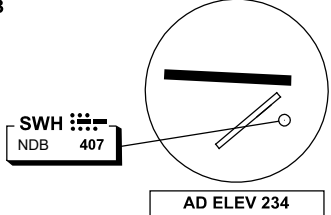
25 NM MSA



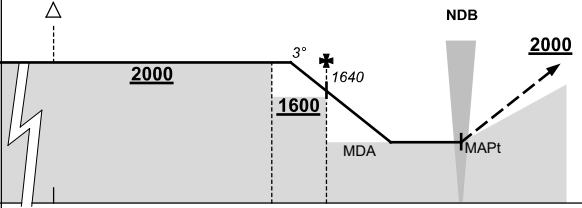
10 NM MSA 2000

REFERENCE WAYPOINT SWH NDB

AWIS (PHONE) 03 8470 3221



AD ELEV 234

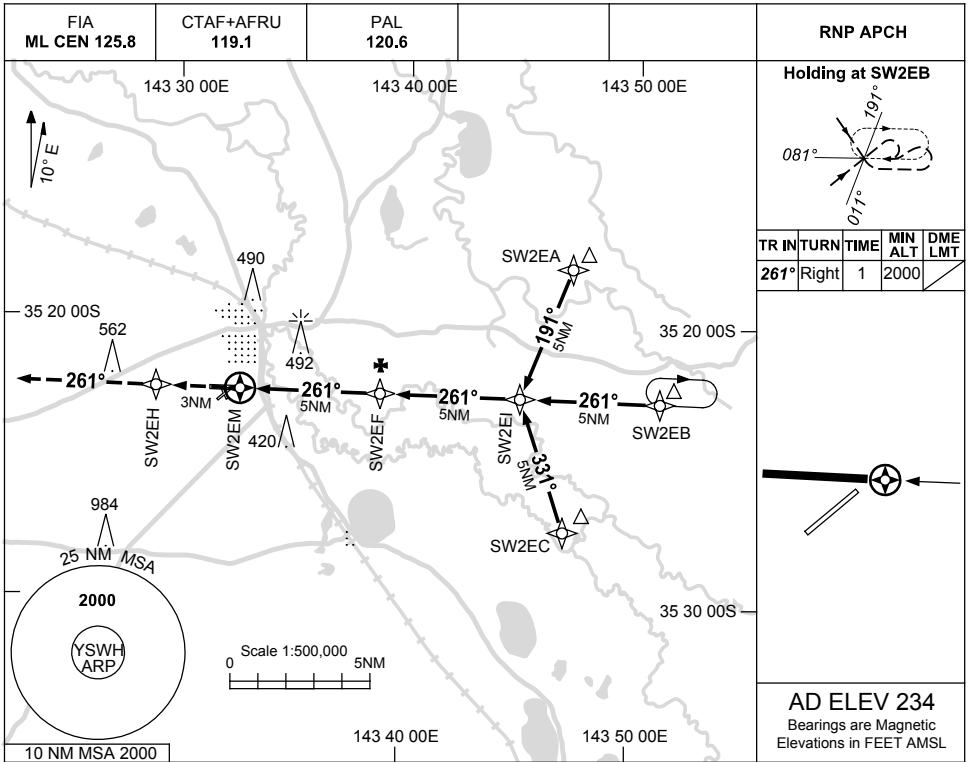
ALL TRACKS TO SWH NDB											<p>MISSED APPROACH:</p> <p>CLIMB ON TRACK TO 2000FT.</p>									
	NM TO SWH NDB	25	15	7	5	0														
CIRCLING MINIMA			A,B: 970-2.4		C: 1060-4.0		D: N/A													
NM TO SWH NDB	6.2	6	5	4	3.2	3	2.9													
ALT (3° APCH PATH)	2000	1960	1640	1320	1060	1000	970													

Changes: MINIMUM SEGMENT ALTITUDE, NEW LOGO. SWHDG01-177

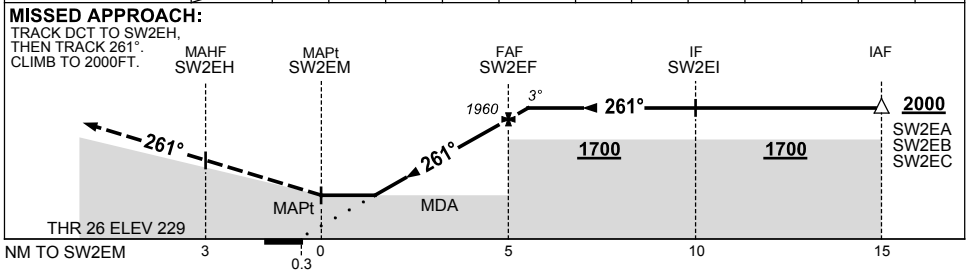
USE QNH

RNP RWY 26
SWAN HILL, VIC (YSWH)

15 JUN 2023



NM TO NEXT WPT	SW2EM	1.5	2	3	4	SW2EF	0.1						
ALT (3° APCH PATH)		840	1000	1320	1640	1960	2000						



NOTES

CATEGORY	A	B	C	D
LNAV	840 (606-3.4)			NOT APPLICABLE
CIRCLING	890 (656-2.4)		1060 (826-4.0)	
ALTERNATE	(1156-4.4)		(1326-6.0)	

1. MAX IAS: INITIAL : 210KT.
2. AWIS (PHONE) 03 8470 3221

Changes: THR ELEV, MDH, WPT NAMES, CHART TITLE, PBN SPECIFICATION BOX, Editorial.

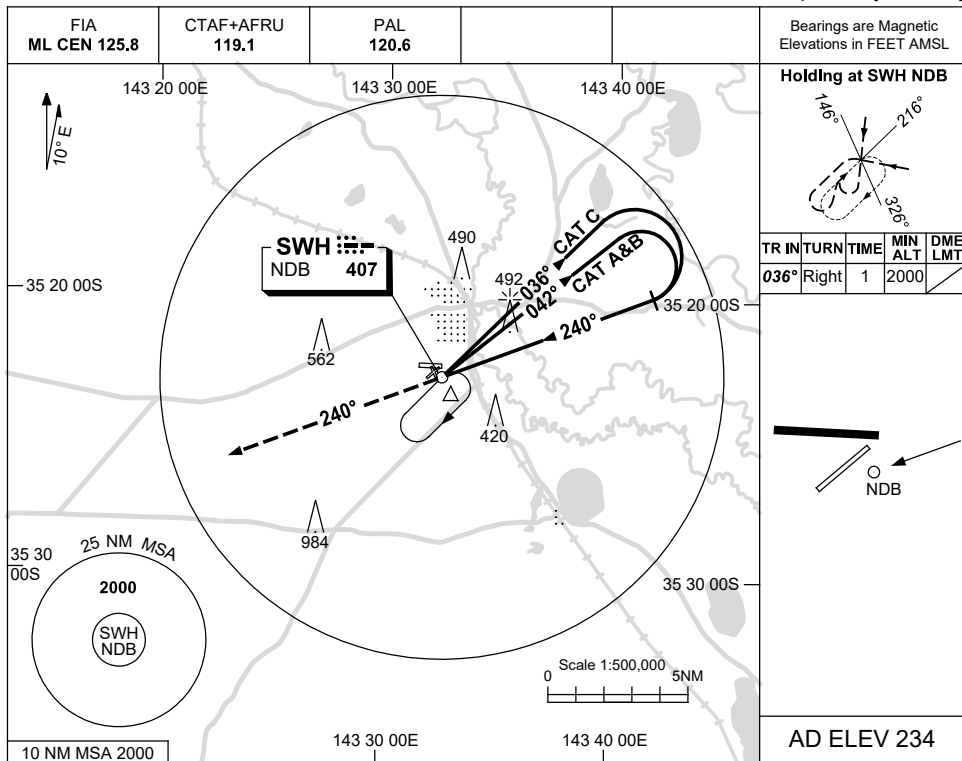
SWHGN01-175

USE QNH

NDB-A

17 JUN 2021

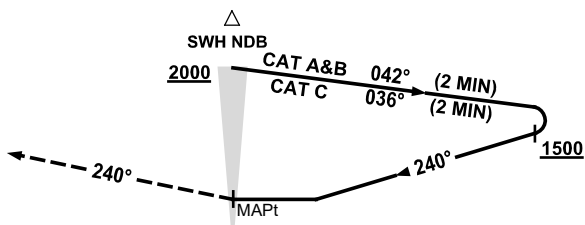
SWAN HILL, VIC (YSWH)



DME DIST	NOT APPLICABLE				
ALT					

MISSED APPROACH:

TRACK 240°.
CLIMB TO 2000FT.



NOTES

1. MAX IAS:
INITIAL : 210KT.
2. AWIS (PHONE)
03 8470 3221

CATEGORY	A	B	C	D
				NOT APPLICABLE
CIRCLING	890 (656-2.4)		1060 (826-4.0)	
ALTERNATE	(1156-4.4)		(1326-6.0)	

Changes: RWY 15/33 DCMSD.

SWHNB01-167