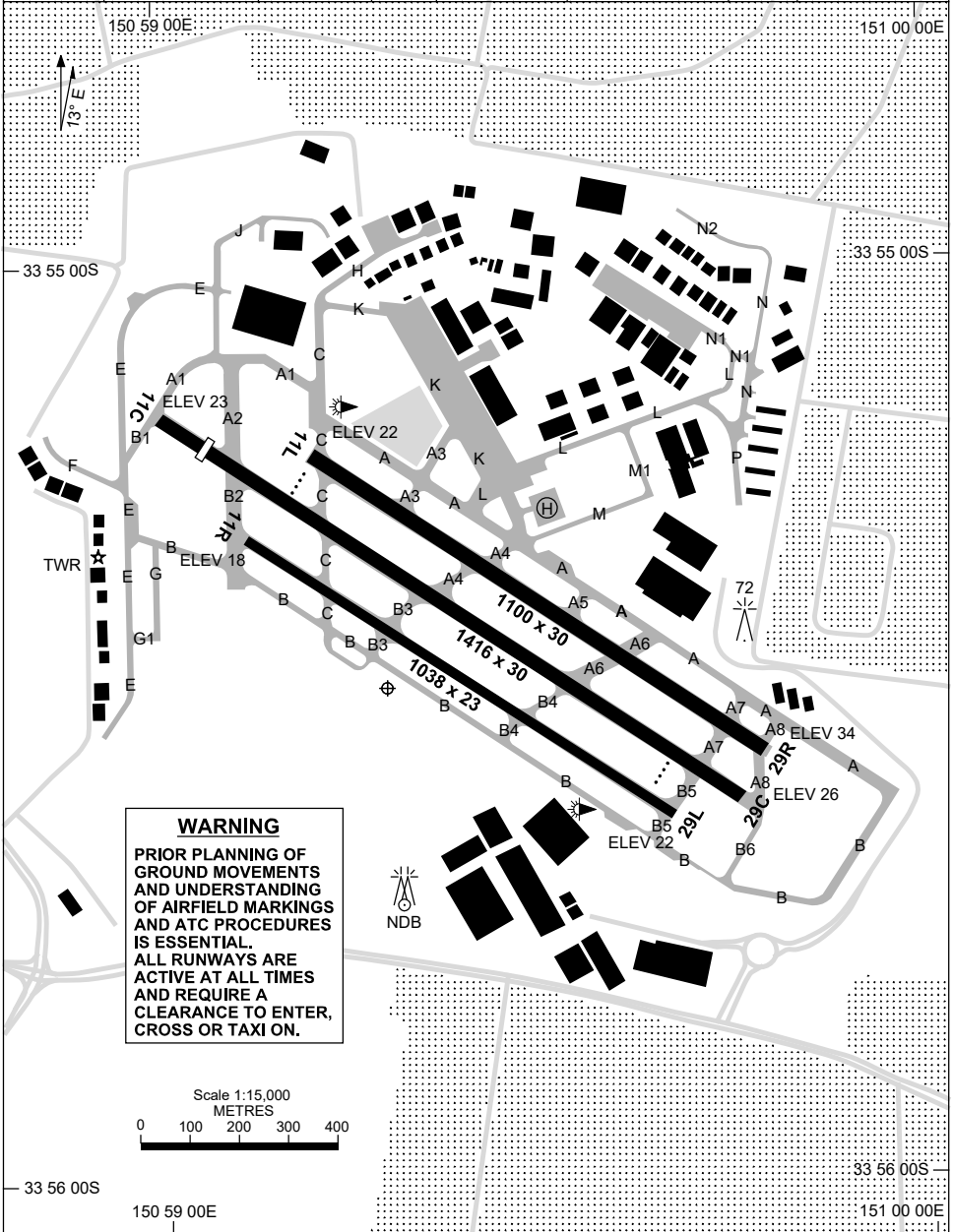


13 JUN 2024

33 55 28S 150 59 18E

SYDNEY/BANKSTOWN, NSW (YSBK)

ATIS 120.9	APP/DEP (SY) 128.3/118.4, 129.7	TWR 123.6 132.8	SMC 119.9	FIA (AH) SY CEN 125.8	CTAF+AFRU (AH) 132.8	PAL+AA 125.95	Bearings are MAG ELEV in FT AMSL
---------------	------------------------------------	--------------------	--------------	--------------------------	-------------------------	------------------	-------------------------------------



Changes: MAG VAR, ATIS, Editorial.

SBKAD01-179

13 JUN 2024

ATIS 120.9	APP/DEP (SY) 128.3/118.4, 129.7	TWR 123.6 132.8	SMC 119.9	FIA (AH) SY CEN 125.8	CTAF+AFRU (AH) 132.8	PAL+AA 125.95	Bearings are MAG ELEV in FT AMSL
RWY	AERODROME LIGHTING						
	ABN : FLG W 4 SEC TAXIWAY : GREEN CENTRELINE RL : PAL+AA, SDBY (3 SEC) , PTBL (EMERG ONLY, 60 MIN PN)						
11C ¹¹¹ 291 29C	PAPI 3.0° 25FT MIRL RTIL PTBL PAPI 3.0° 25FT MIRL RTIL PTBL						
11L ¹¹¹ 291 29R	PTBL PTBL						
11R ¹¹¹ 291 29L	NIL NIL						
<p>NOTES</p> <p>1. FIA FREQ SUBJECT TO SHIELDING. USE IN OPEN AREAS WITH LINE OFF SIGHT TO CONTROL TWR.</p>							

Changes: ATIS, Editorial.

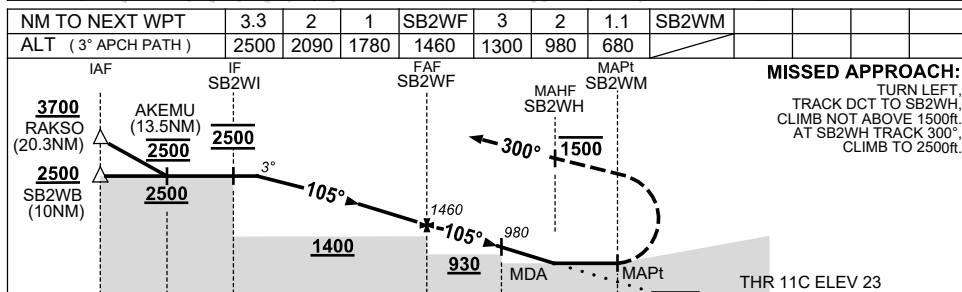
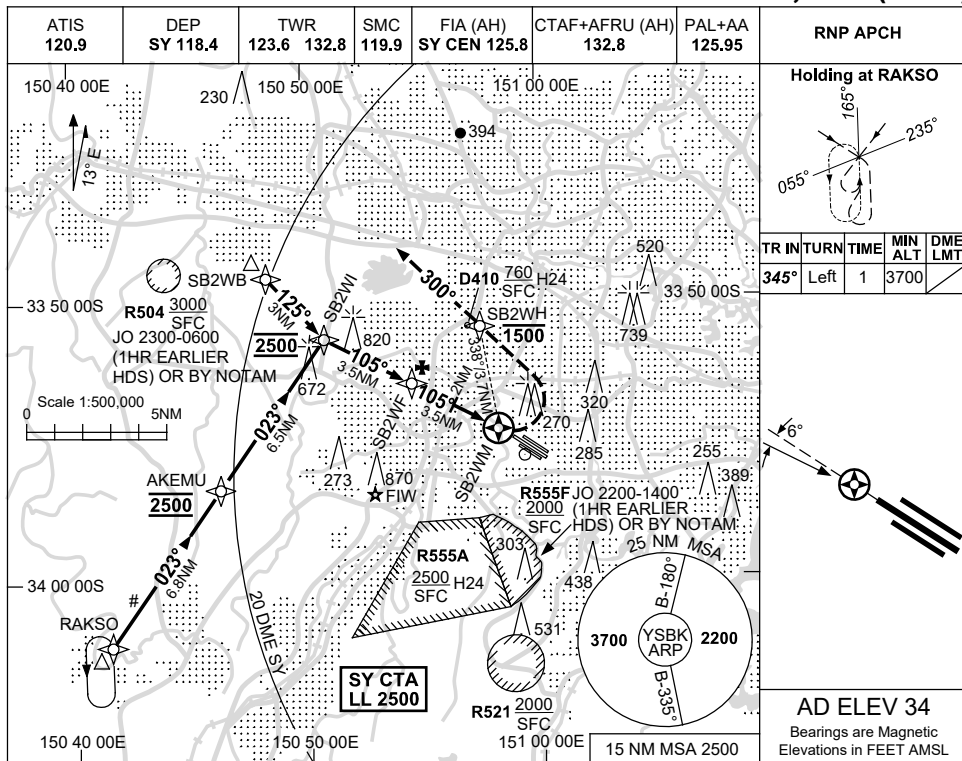
SBKAD02-179

USE QNH

RNP RWY 11C

13 JUN 2024

SYDNEY/BANKSTOWN, NSW (YSBK)



CATEGORY	A	B	C	D
LNAV	680 (657-3.7)			NOT APPLICABLE
CIRCLING	800 (766-2.4)		960 (926-4.0)	
ALTERNATE	(1266-4.4)		(1426-6.0)	

NOTES

1. MAX IAS:
HOLDING : 150KT.
INITIAL : 180KT.
MISSED APCH TURN : 160KT.
2. CIRCLING BEYOND 2.5NM SW OF YSBK WILL REQUIRE A CLEARANCE INTO R555A.
3. INITIAL SEGMENT COINCIDENT WITH WESTMEAD HOSP RNP 052 APPROACH.
4. APCH APPROVAL RQ FM SY ATIS. ALL ACFT TO TRACK VIA RAKSO UNLESS ADVISED BY ATC.

Changes: AKEMU, MINIMA, MAG VAR, ATIS, WPT NAMING CONVENTION, Editorial.

SBKGN01-179

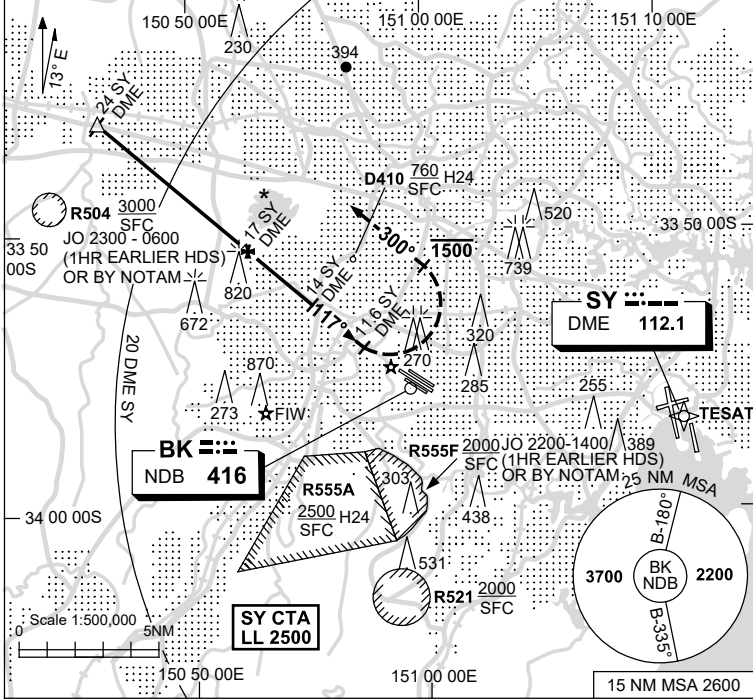
USE QNH

NDB RWY 11C

13 JUN 2024

SYDNEY/BANKSTOWN, NSW (YSBK)

ATIS 120.9	DEP SY 118.4	TWR 123.6 132.8	SMC 119.9	FIA (AH) SY CEN 125.8	CTAF+AFRU (AH) 132.8	PAL+AA 125.95	NAVAID RQ: • SY DME
---------------	-----------------	--------------------	--------------	--------------------------	-------------------------	------------------	------------------------

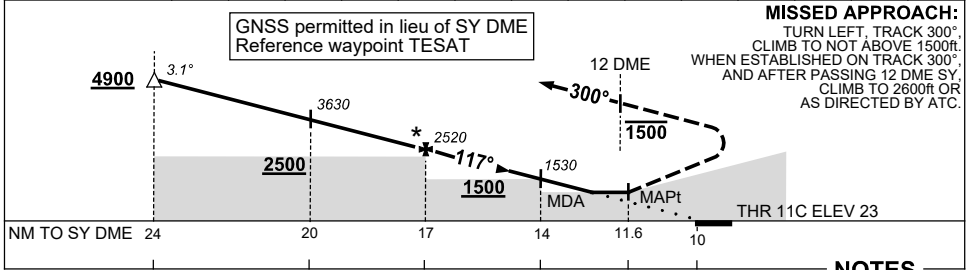


Holding as Advised by ATC

TR	IN	TURN	TIME	MIN ALT	DME LMT
/	/	/	/	/	/

AD ELEV 34
Bearings are Magnetic
Elevations in FEET AMSL

DIST TO SY DME	23.8	23	22	21	20	19	18	17	16	15	14	13	12	11.7
ALT(3.1° APCH PATH)	4900	4650	4310	3970	3630	3280	2930	2520	2240	1880	1530	1170	800	700



NM TO SY DME	24	20	17	14	11.6	10
NM TO THR 11C	14.9	10.8	7.6	4.4	1.8	0

CATEGORY	A	B	C	D
S-I NDB	700 (677-3.7)			NOT APPLICABLE
CIRCLING	800 (766-2.4)		960 (926-4.0)	
ALTERNATE	(1266-4.4)		(1426-6.0)	

- NOTES**
- MAX IAS:
INITIAL : 180KT.
MISSED APCH : 160KT.
TURN : 160KT.
 - CIRCLING BEYOND 2.5NM SW OF YSBK WILL REQUIRE A CLEARANCE INTO R555A.
 - ACFT WILL BE RADAR VECTORED TO IAF.
 - *4. ACFT ARE TO BE AT 2500FT BY 17 SY.

Changes: 15NM MSA, MAG VAR, MINIMA, ATIS, Editorial.

SBKNB03-179