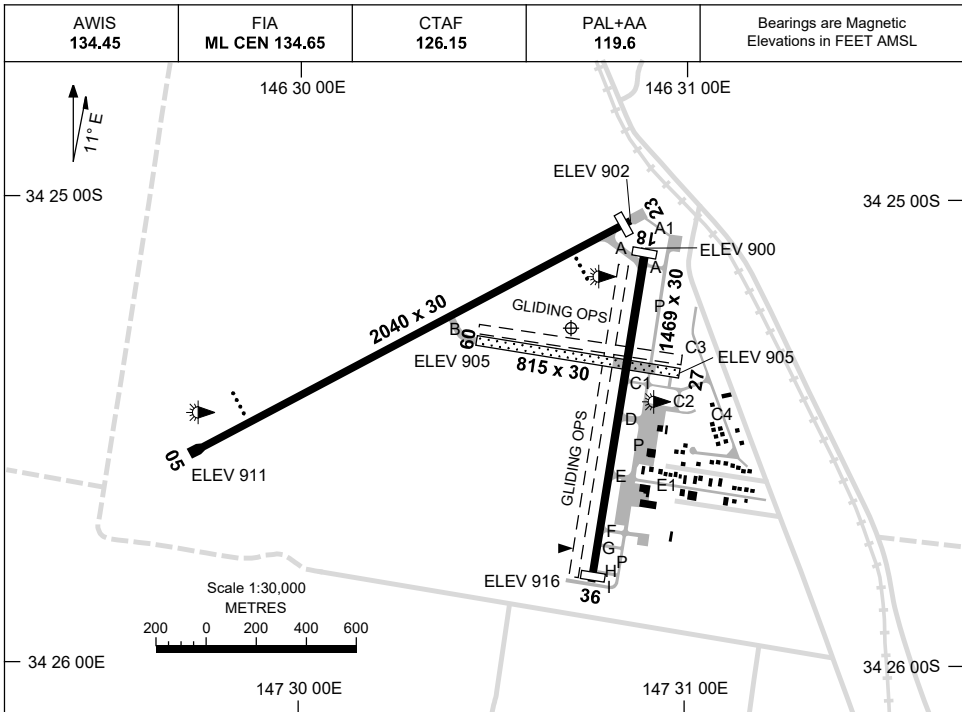


5 SEP 2024

AD ELEV 921  
34 25 17S 147 30 42E

AERODROME CHART  
**TEMORA, NSW (YTEM)**



		<b>AERODROME LIGHTING</b>	
<b>RWY</b>		TAXIWAY : BLUE EDGE	
		RL : PAL+AA 119.6	
<b>05</b>	<i>050</i>	PAPI 3.0° 41.3FT LIRL	
<i>230</i>	<b>23</b>	PAPI 3.0° 41.3FT LIRL	
<b>18</b>	<i>177</i>	NIL	
<i>357</i>	<b>36</b>	NIL	
<b>09</b>	<i>087</i>	NIL	
<i>267</i>	<b>27</b>	NIL	

**NOTES**

- ML CEN FIA 134.65 AVBL IN CIRCUIT AREA.
- AWIS RQ 1 SEC PULSE TO ACT.

Changes: APRON AND TWY, Editorial.

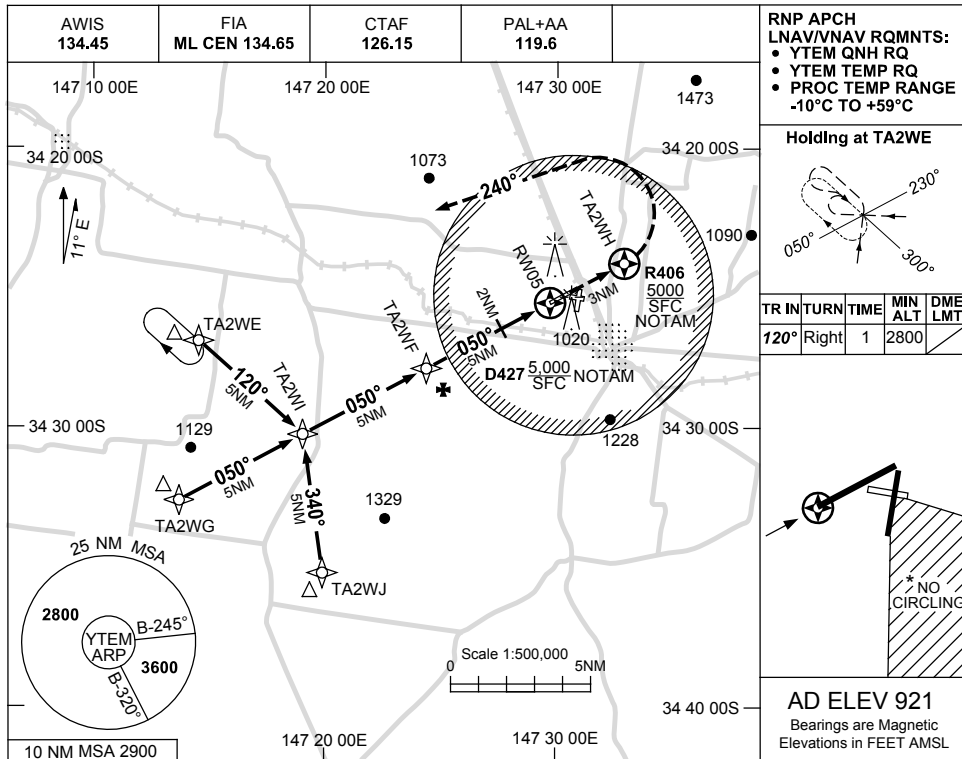
TEMAD01-180

USE QNH

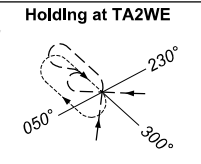
RNP RWY 05

TEMORA, NSW (YTEM)

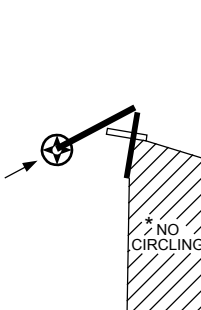
15 JUN 2023



RNP APCH  
LNAV/VNAV RQMTS:  
• YTEM QNH RQ  
• YTEM TEMP RQ  
• PROC TEMP RANGE  
-10°C TO +59°C

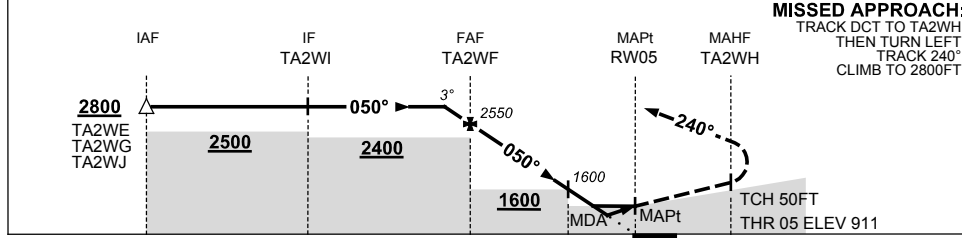


TR	IN	TURN	TIME	MIN ALT	DME LMT
120°	Right	1		2800	



AD ELEV 921  
Bearings are Magnetic  
Elevations in FEET AMSL

NM TO NEXT WPT	0.8	TA2WF	4	3	2	1.6	1.0	RW05
ALT (3° APCH PATH)	2800	2550	2230	1920	1600	1470	1280	



MISSED APPROACH:  
TRACK DCT TO TA2WH,  
THEN TURN LEFT,  
TRACK 240°,  
CLIMB TO 2800FT.

NM TO RW05: 15, 10, 5, 2, 0, 3

NOTES

CATEGORY	A	B	C	D
LNAV/VNAV	1280 (369-2.1)			
LNAV	1470 (559-3.2)			
CIRCLING *	1710 (789-2.4)	1810 (889-4.0)	1810 (889-5.0)	
ALTERNATE	(1289-4.4)	(1389-6.0)	(1389-7.0)	

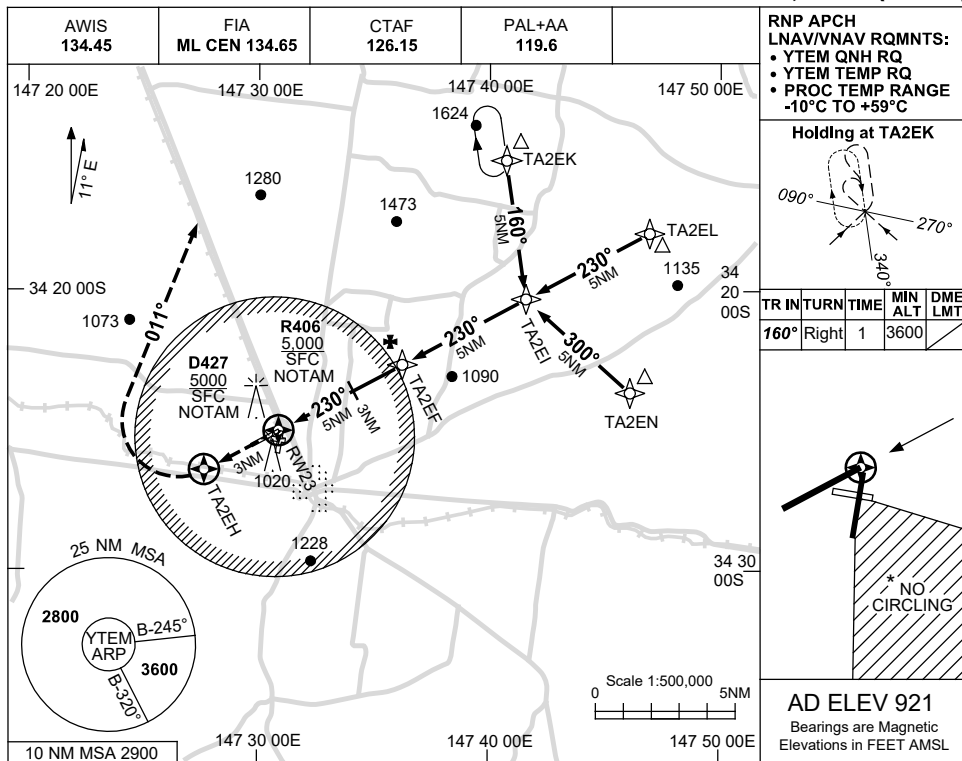
- MAX IAS:  
INITIAL : 210KT.
- NO CIRCLING IN  
SECTOR SOUTH EAST  
OF RWYS 27 & 36.

Changes: SEGMENT MINIMA, CHART TITLE & WPT NAMING CONVENTION, MISSED APCH TRACK. TEMGN02-175

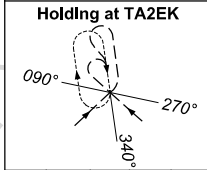
USE QNH

RNP RWY 23  
**TEMORA, NSW (YTEM)**

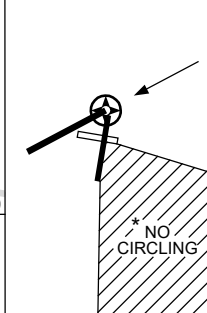
13 JUN 2024



RNP APCH  
 LNAV/VNAV RQMTS:  
 • YTEM QNH RQ  
 • YTEM TEMP RQ  
 • PROC TEMP RANGE  
 -10°C TO +59°C

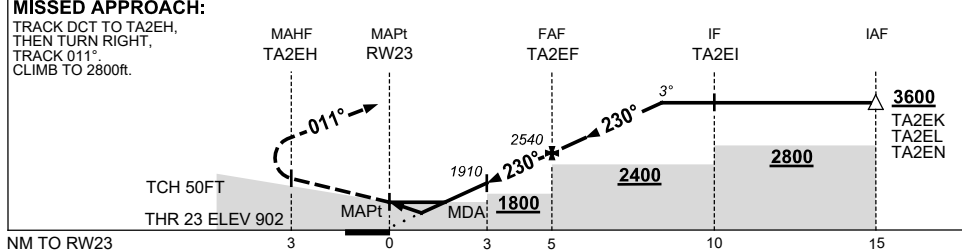


TR IN	TURN	TIME	MIN ALT	DME LMT
160°	Right	1	3600	



**AD ELEV 921**  
 Bearings are Magnetic  
 Elevations in FEET AMSL

NM TO NEXT WPT	RW23	1	1.6	2	3	4	TA2EF	1	2	3	3.3		
ALT (3° APCH PATH)		1280	1470	1590	1910	2230	2540	2860	3180	3500	3600		



**NOTES**

CATEGORY	A	B	C	D
LNAV/VNAV		<b>1280</b> (378-2.1)		
LNAV		<b>1470</b> (568-3.2)		
CIRCLING *	<b>1710</b> (789-2.4)		<b>1810</b> (889-4.0)	<b>1810</b> (889-5.0)
ALTERNATE	(1289-4.4)		(1389-6.0)	(1389-7.0)

- MAX IAS:  
INITIAL : 210KT.
- \*2. NO CIRCLING IN SECTOR SOUTH EAST OF RWYS 27 & 36.

Changes: HOLDING, Editorial.

TEMGN03-179